

ROADS

PARKS

COURTHOUSE and JAIL EXPANSION

ANIMAL SHELTER

MEDICAL EXAMINER

COLLIN COUNTY BOND ELECTION

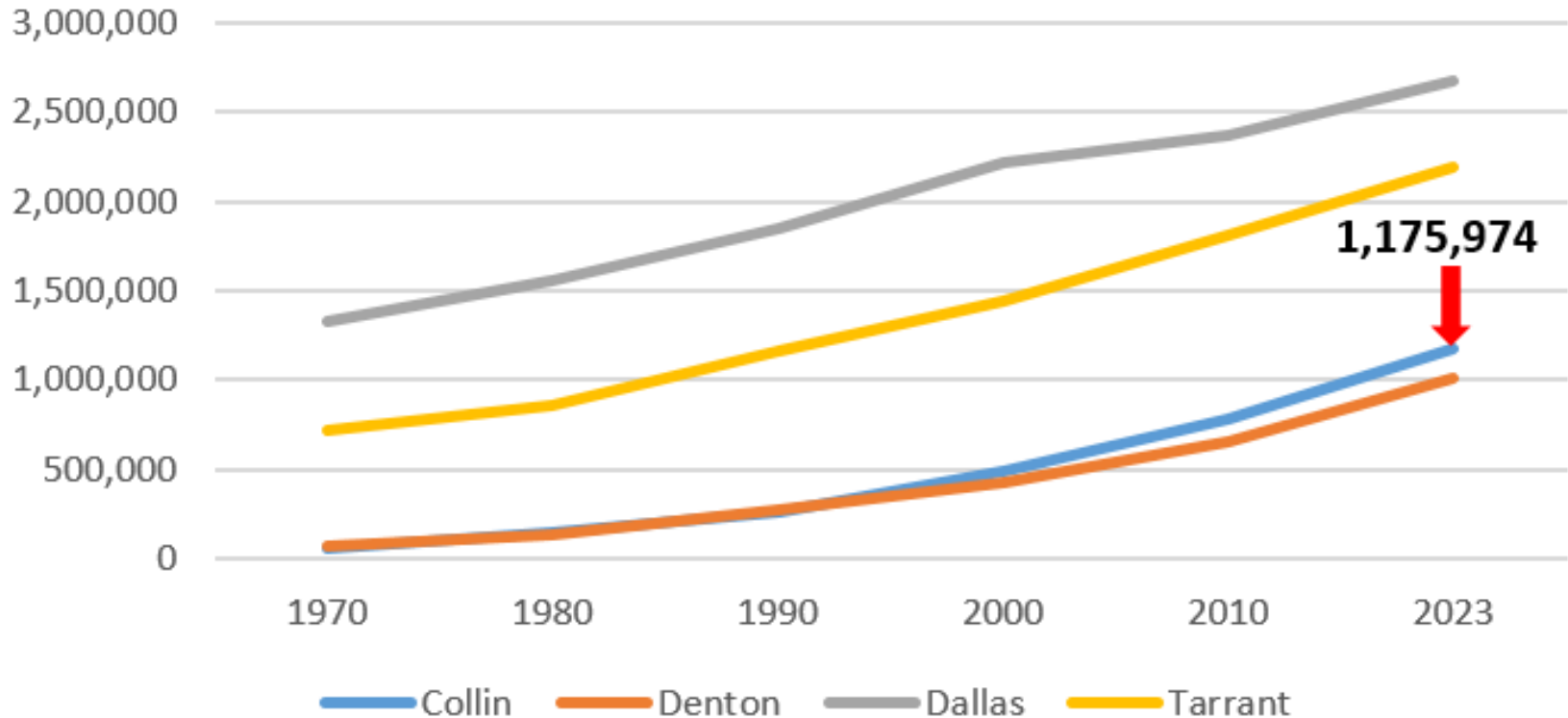
ON NOV 7th

WHY?

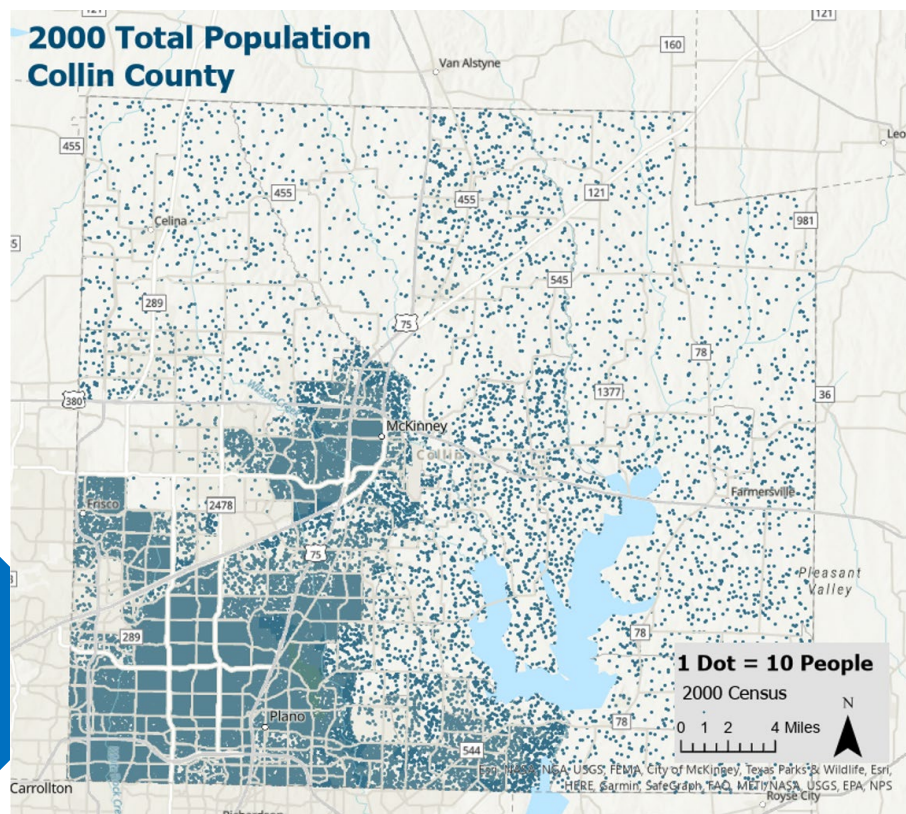
- County is the **third fastest growing in U.S.**
- Population **doubled** since 2000
- Projected to **double again** over next 30 years
- **112 new residents every day** - 40,000 in 2022

HISTORIC GROWTH

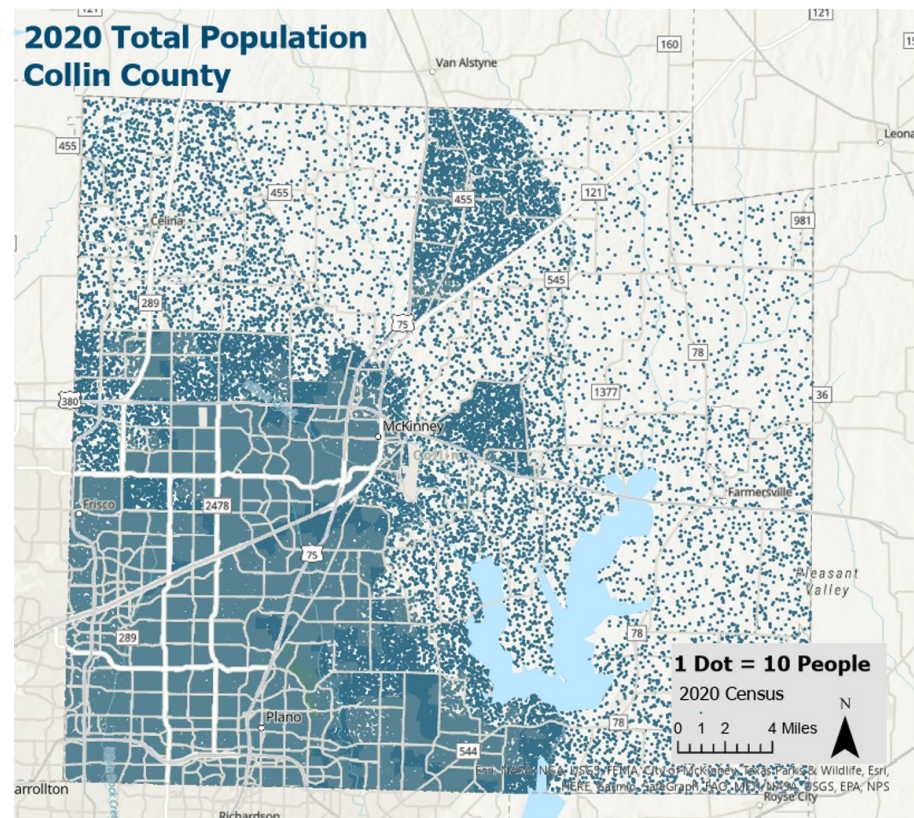
Population Metroplex Counties, 1970 to Present



HISTORIC GROWTH



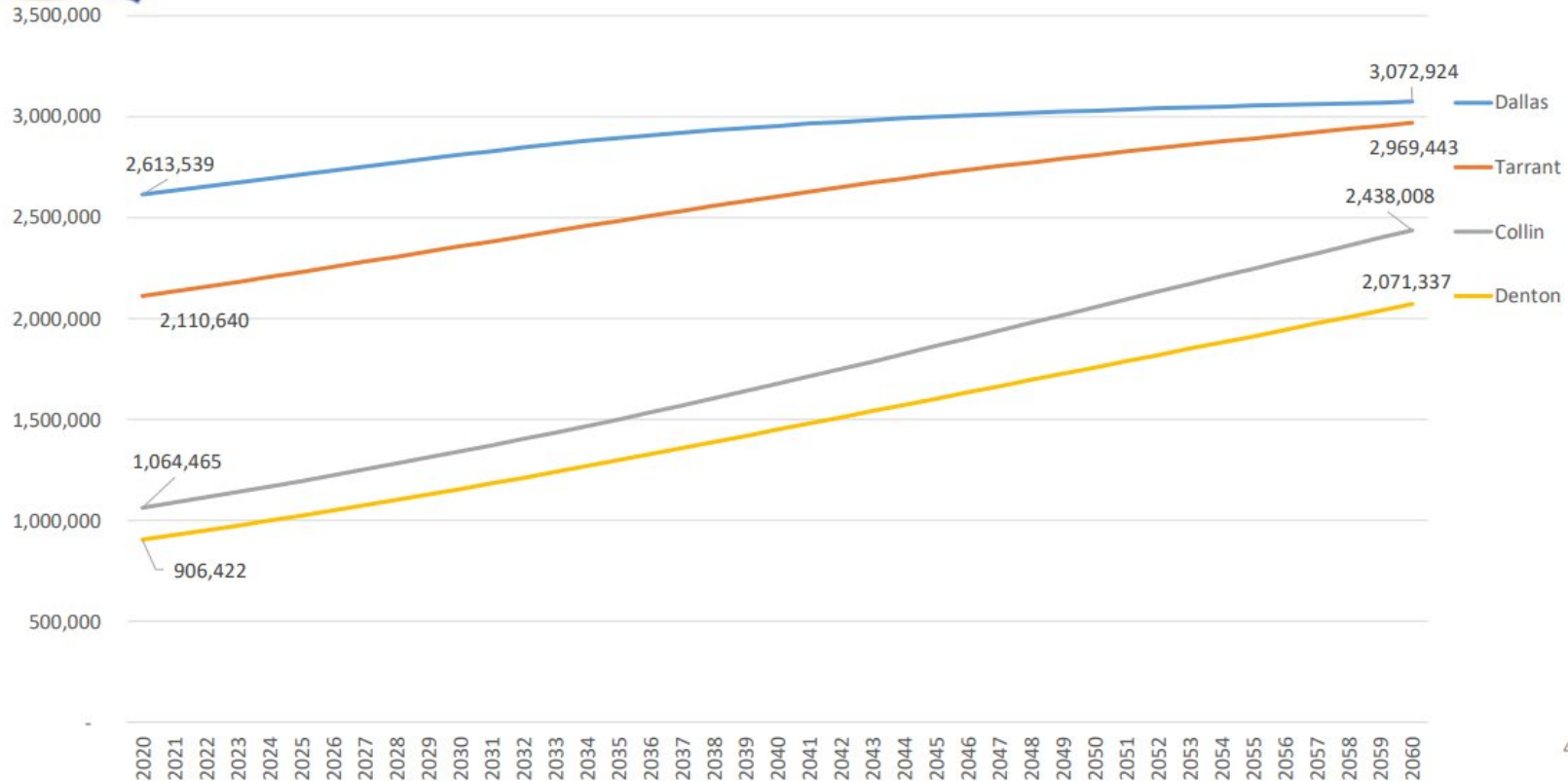
2000



2020

FUTURE GROWTH

Projected Population for Select Counties, Texas, 2020-2060



PROPOSALS

\$683.37 million bond package that includes five propositions



JUSTICE

PROPOSITION A
\$261.86M

**ANIMAL
SHELTER**

PROPOSITION B
\$5.70M

HEALTH

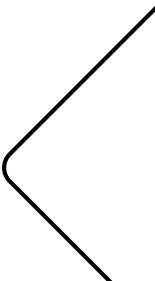
PROPOSITION C
\$13.36M

PARKS

PROPOSITION D
\$22.45M

ROADS

PROPOSITION E
\$380.00M



PROPOSITION A

JUSTICE FACILITIES

- **Russell A. Steindam Courts Building and Parking** now at capacity
- Needs:
 - Courtroom expansion due to caseload growth
 - Additional District Attorney and District Clerk offices
 - Planned parking garage for additional staff, visitors and larger jury pools



JUSTICE FACILITIES CONT.

- **Adult Detention Infirmary** over capacity
- Needs:
 - Renovation of infirmary
 - Expansion of medical and mental health bed capacity



JUSTICE FACILITIES CONT.

- **Juvenile Facilities** nearing capacity
- Needs:
 - Addition of planned **Detention** cluster
 - Addition of space for **Juvenile Probation in the Plano facility**

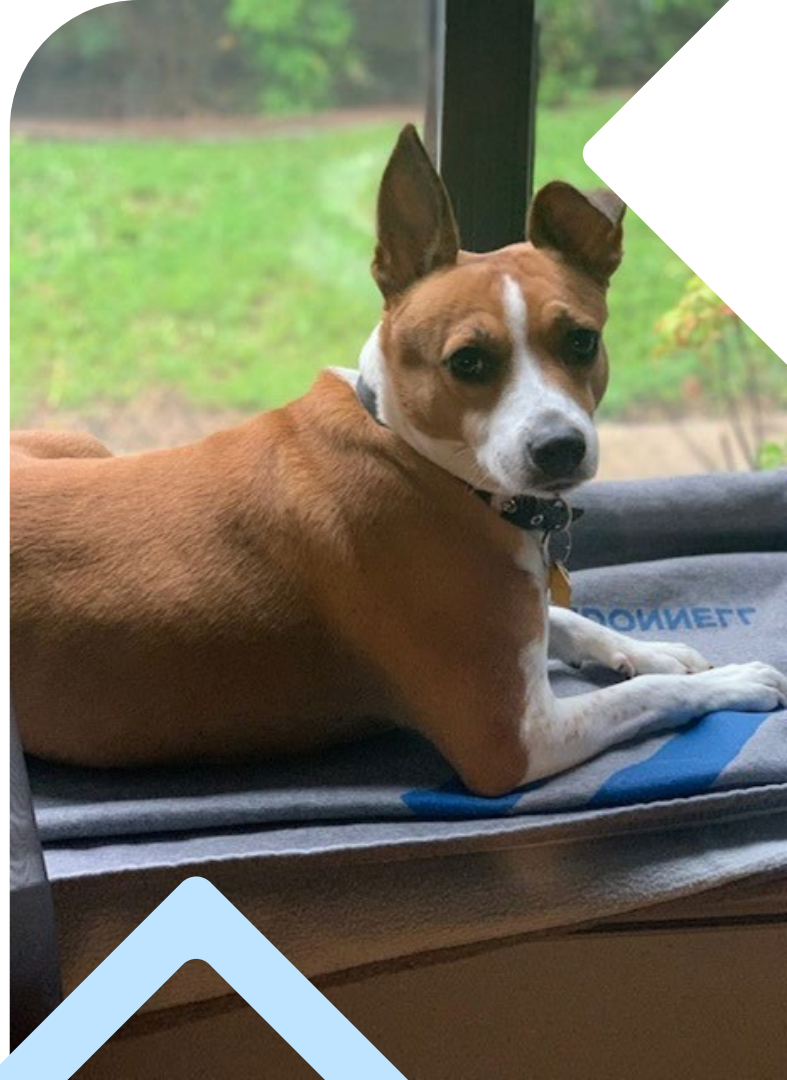
Proposition A
Justice System Facility Additions
\$261,864,179



PROPOSITION B

ANIMAL SHELTER

- **Shelter** consistently over capacity
- Number of adoptions much lower than before COVID
- Original facility built in 2006; no expansion since



ANIMAL SHELTER, CONT.

- Needs:
 - Shelter expansion including:
 - Additional 60 kennels for adoptable dogs
 - Additional 40 kennels for adoptable cats
 - Additional rooms for adoption and fostering



ANIMAL SHELTER, CONT.

- Shared Cost
 - Facilities and operations financially shared by *18 cities and municipal utility districts*
 - Majority of costs reimbursed by other entities

Proposition B
Animal Shelter Improvements
\$5,700,000



PROPOSITION C

PUBLIC HEALTH

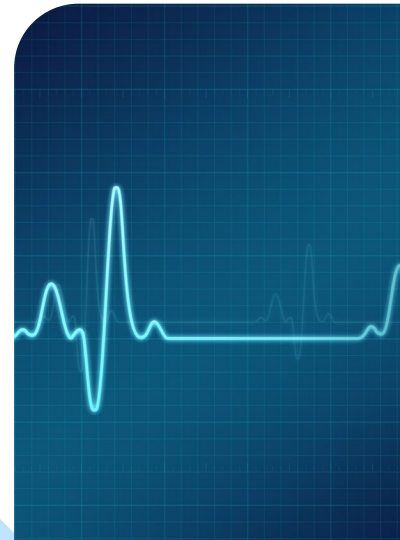
- **Medical Examiner's Facility** built in 1988 (700 Wilmeth Rd.)
- Over capacity
- Outdated for current needs
- No room in current location for expansion for today and future



PUBLIC HEALTH, CONT.

- Need new building to increase autopsy, storage and administrative capacity
- Federal COVID funds not adequate for Medical Examiner's Facility improvements; need bonds to supplement

Proposition C
Medical Examiner's Facility
\$13,360,685



PROPOSITION D

PARKS AND OPEN SPACE

- More **Parks and Open Space** to meet the needs for a growing County population
- Original buildings at **Myers Park and Event Center** need structural upgrades



PARKS AND OPEN SPACE, CONT.

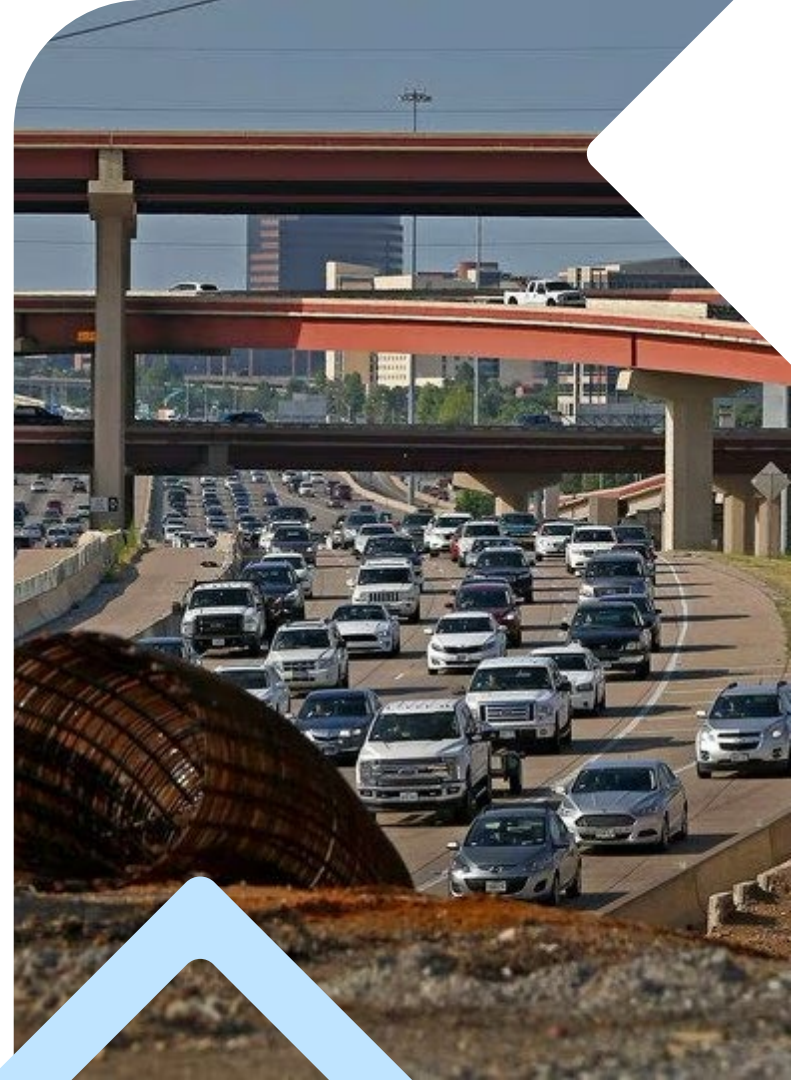
- Needs:
 - Partnering with cities for development of parks and open space
 - Reconstruction and renovation of aging facilities at Myers Park and Event Center

Proposition D
Parks & Open Space
\$22,450,000



PROPOSITION E ROADS

- Inadequate **Countywide Road Capacity** to sustain the local economy through the efficient movement of people and goods
- Deteriorating **Road Conditions** due to dramatic increase in development inside and outside of cities



ROADWAYS, CONT.

- Needs:
 - Capacity and structural improvements to county roads
 - Development of new regional thoroughfares and freeways
 - Partnerships with other transportation agencies for improvements to regional corridors

Proposition E Roads
\$380,000,000



2023 Collin County Bond Program

SUMMARY

■	Prop A	Justice Facilities	\$261,864,179
■	Prop B	Animal Shelter	\$ 5,700,000
■	Prop C	Medical Examiner	\$ 13,360,685
■	Prop D	Parks & Open Space	\$ 22,450,000
■	Prop E	Roads	<u>\$ 380,000,000</u>
Total			\$ 683,374,864

2023 Collin County Bond Program

Tax Impact

- NO TAX RATE INCREASE; actually 5.5% lower than previous year
- 2023 average home value 13.8% higher than 2022
- Max 10% per year increase in home assessed value with homestead exemption
- Collin County taxes frozen for everyone age 65 and over and cannot increase

Collin County Tax Rate	
Tax Year	Rate
2020	\$0.174951
2021	\$0.172531
2022	\$0.168087
2023	\$0.152443
2024	\$0.149343

Election Day

November 7, 2023

Early Voting

October 23 to November 3

Polling Locations and More Information

www.collincountytexas.gov



For Questions

Contact



CC2023BondProgram@gmail.co