

Exterior Elevations - Base Design

Finishes

- **EW-1 EIFS - Vertical Ribs**
Dryvit - Outsulation Plus, 10" OC Ribs,
Color-integrated to match P-4 (SW7069)
- **EW-2 EIFS - Brick**
Dryvit NewBrick - Color-integrated brick to
match SW6445 with dark gray mortar
- **FC-1 Fiber Cement Panel**
Nichiha - Ribbed, Ivory
- **FC-2 Fiber Cement Panel**
Nichiha - Vintagewood, Spruce
- **FC-3 Fiber Cement Panel**
Nichiha - Nichipanel, Smooth, Color-
integrated to match SW6445
- **T-1-12 Tile Base**
CMC - Cementing, Black
- **P-4 Coping & Channel Paint**
Sherwin Williams - Iron Ore (SW7069)



Exterior Elevations - Base Design

Finishes

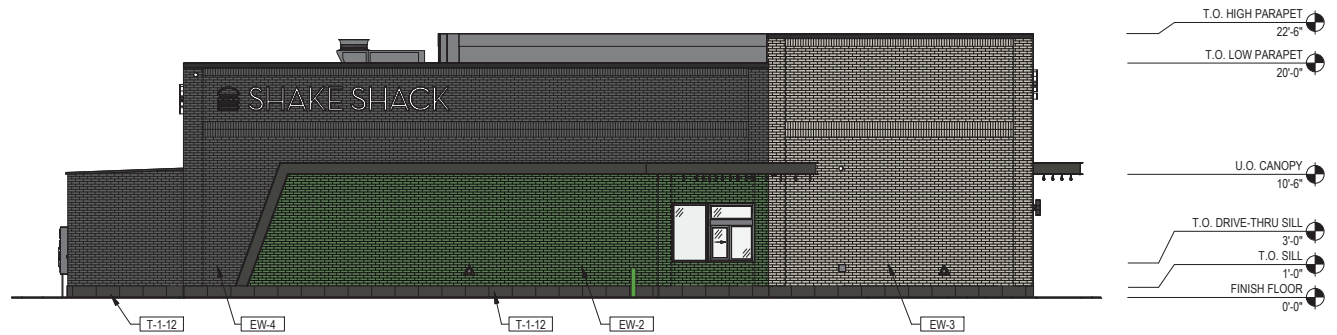
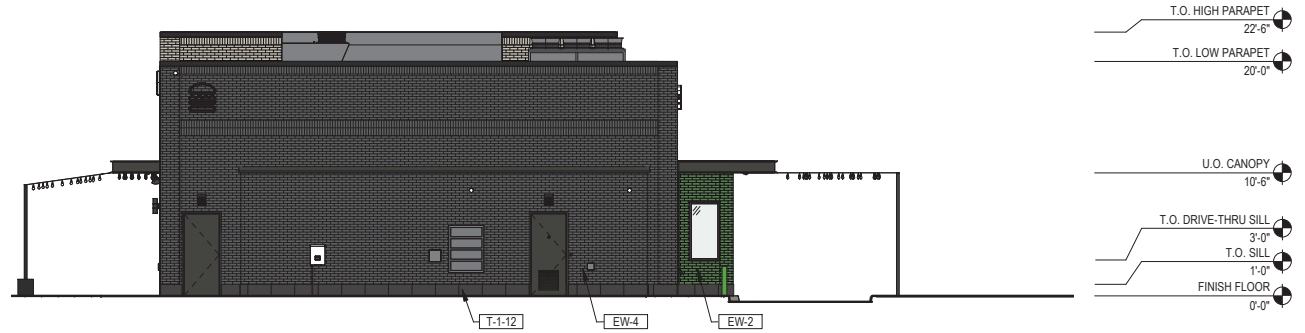
- **EW-1 EIFS - Vertical Ribs**
Dryvit - Outsulation Plus, 10" OC Ribs,
Color-integrated to match P-4 (SW7069)
- **EW-2 EIFS - Brick**
Dryvit NewBrick - Color-integrated brick to
match SW6445 with dark gray mortar
- **FC-1 Fiber Cement Panel**
Nichiha - Ribbed, Ivory
- **FC-2 Fiber Cement Panel**
Nichiha - Vintagewood, Spruce
- **FC-3 Fiber Cement Panel**
Nichiha - Nichipanel, Smooth, Color-
integrated to match SW6445
- **T-1-12 Tile Base**
CMC - Cementing, Black
- **P-4 Coping & Channel Paint**
Sherwin Williams - Iron Ore (SW7069)



Exterior Elevations - Masonry Alternate

Finishes

- **EW-2** EIFS - Brick
Dryvit NewBrick - Color-integrated brick to match SW6445 with dark gray mortar
- **EW-3** EIFS - Brick
Dryvit NewBrick - Super White
- **EW-4** EIFS - Brick
Dryvit NewBrick - Black Beauty
- **T-1-12** Tile Base
CMC - Cementing, Black
- **P-4** Coping & Channel Paint
Sherwin Williams - Iron Ore (SW7069)



Exterior Elevations - Masonry Alternate

Finishes

- **EW-2** EIFS - Brick
Dryvit NewBrick - Color-integrated brick to match SW6445 with dark gray mortar
- **EW-3** EIFS - Brick
Dryvit NewBrick - Super White
- **EW-4** EIFS - Brick
Dryvit NewBrick - Black Beauty
- **T-1-12** Tile Base
CMC - Cementing, Black
- **P-4** Coping & Channel Paint
Sherwin Williams - Iron Ore (SW7069)

