

LEGEND

- PROPERTY BOUNDARY
- PROPOSED SAWCUT LINE
- PROPOSED FIRE LANE
- PROPOSED PARKING COUNT
- PROPOSED ACCESSIBLE PARKING SPACE
- PROPOSED BARRIER FREE RAMP
- PROPOSED SANITARY SEWER MANHOLE
- PROPOSED CURB INLET
- PROPOSED FIRE HYDRANT
- PROPOSED POWER POLE
- EXISTING SANITARY SEWER MANHOLE
- EXISTING FIRE HYDRANT
- EXISTING LIGHT POLE

NOTES

1. REVISIONS OF DRIVE TO BE DONE WITH SPECIAL PROJECT BY WALMART THAT IS NOT INCLUDED WITH DRONE PROJECT

DRONE DELIVERY ZONING EXHIBIT
WOODLAKE VILLAGE
BLOCK C, LOT 1R-6R1
17.691 ACRES
PREPARED: JULY 30, 2024

OWNER/APPLICANT:
WAL-MART REAL ESTATE BUSINESS TRUST
2001 S.E. 10TH STREET
BENTONVILLE, ARKANSAS 72716-0550

ENGINEER:
KIMLEY-HORN AND ASSOC.
10101 REUNION PLACE
SUITE 400
SAN ANTONIO, TX 78216
PH. # 210 660 2943
CONTACT: JUAN MOREIRA

SURVEYOR:
YAZEL FERRERES & ASSOCIATES LLC
PO BOX 210097
BEDFORD, TX 76095
PHONE: 682.223.0200

SITE DATA SUMMARY													
LOT	GROSS LOT SIZE (ACRES)	LOT SIZE (SQ. FT.)	PROPOSED USE	LOT COVERAGE (R. AREA RATIO)	BLDG. AREA (SQ. FT.)	BLDG. HGT.	BLDG. PROX./STORIES	REG. RATIO	PARKING	FRESH. (RES.) PROV.	HANDICAP SP.	CURRENT ZONING	
LOT 1	17.691	770,620	PROPOSED STORE DRONE DELIVERY	46.0% MAX	26,676	0.250	192,896	50' MAX.	36' - 1	1:300 RET.	643	694	14 20

*HANDICAP PARKING IS PROVIDED IN ACCORDANCE WITH ADA STANDARDS.

Kimley » Horn

2023 KIMLEY-HORN AND ASSOCIATES, INC.
10101 REUNION PLACE, SUITE 400, SAN ANTONIO, TX, 78216
WWW.KIMLEY-HORN.COM
TEXAS REGISTERED ENGINEERING FIRM F-229

DATE

REVISIONS

No.

SCALE: AS SHOWN

DESIGNED BY: JUAN B. MOREIRA

DRAWN BY: JUAN B. MOREIRA

CHECKED BY: JUAN B. MOREIRA

SITE PLAN

ZONING EXHIBIT

Walmart » STORE # 5210-1003

2050 N STATE HWY 78

WYLLIE, TX 75098

DATE: 7/20/24

PROJECT NO.: 24030208

SHEET NUMBER: EX



March 14, 2024

Dear Mr. Gafen

For the above referenced site, we have evaluated the temporary fence installation in the parking lot for stability against wind loading. We have applied the code required wind loads and have checked the fence system for stability against sliding and overturning. We are presenting two (2) options with varying size of base plates and installations using anchors into a concrete base required to satisfy the required factor of safety.

We certify that either of the options presented herein will satisfy the wind loading for the fence system if installed in accordance with the design parameters set forth in the attached options.

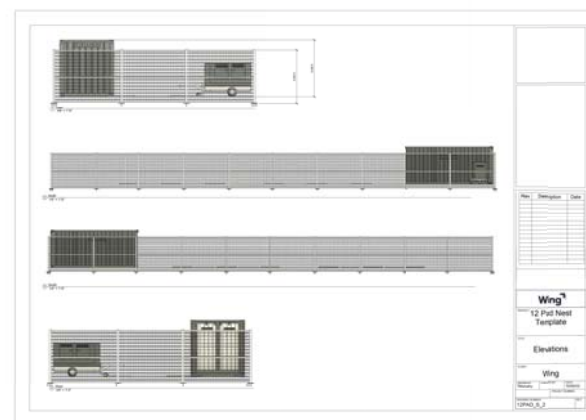
If you have any questions regarding this matter, please feel free to contact my office at 609-489-5511. We appreciate the opportunity to assist you with this evaluation.

Sincerely,
MPP Engineers, LLC



Ashutosh Patel, P.E.
TX PE 109430
TX Firm No. 15740

MPP Engineers, LLC | 34 South Main Street, Suite D | Allentown, NJ 08501
609-489-5511 (Phone) | www.mppengineers.com | 609-489-5916 (Fax)



DRONE DELIVERY DETAIL PLAN

Walmart  STORE # 5210-1003
2050 N STATE HWY 78
WYLIE, TX 75098

DATE 7/20/24
PROJECT NO. 063363236
SHEET NUMBER EX

Allmand Maxi-Power 25

Mobile Generator



Rented Generator from

Texas First Rentals

Engine Brand

Isuzu

Engine Model

4LE2T

Engine Tier

Tier 4 Final

**Output @ Rated Speed (1,800 RPM) -
HP******

33

Standby Power - kVA (kW)

27.5 (22)

Prime Power - kVA (kW)***

25 (20)

Battery (V)

12

Voltage Regulation Percentage

0.50%

Amperage Single Phase 120 V (A)

60 x 2

Amperage Single Phase 240 V (A)

60

Amperage Three Phase 120 V / 208 V (A)

69

Amperage Three Phase 277 V / 480 V (A)

30

Excitation

Brushless with AVR

Insulation

Class H4

Integral Fuel Tank Capacity (gal)

52

Runtime @ Full Load (hrs)

31+

Main Breaker Size (Amps)

100 (80%)

Sound Level @ 23 ft. (No Load) - dBA

63

Engine Oil Change Interval (hrs)

500

Engine Fuel Filter Change Interval (hrs)

500

Dry Weight (lbs)

2,425

Operating Wet Weight (lbs)

2,780

Trailer Weight (lbs)

531.4

Trailer GVWR (lbs)

2,900

Length With Towing Frame (in)

123.3

Width With Towing Frame (in)

54.8



Maxi-PowerTM

Mobile Generator

SOUND ATTENUATED

HEAVY-DUTY, OVER-SIZED ALTERNATOR

HIGH CAPACITY, COLD START BATTERY

AUTOMATIC VOLTAGE REGULATOR (AVR)

120 VOLT GFCI RECEPTACLES ALWAYS
ENERGIZED WHILE RUNNING

ADJUSTABLE COUPLER CHANNEL

FREQUENCY SWITCH TO RUN
50 Hz OR 60 Hz



SINCE 1938

Reliability, Performance and Integrity.

Maxi-Power™

Mobile Generator

Maximize the power of your jobsite with the Maxi-Power™ Mobile Generator. This generator comes equipped with a heavy-duty, oversized alternator equipped for motor starting needs. With a frequency switch for flexibility of jobsite power needs, and 15 inch tires for longer wear and greater towing capabilities, this generator will last and deliver the power you need to get the job done.



KEY FEATURES

- 110% Full Fluid Containment
- Oversized Electrical Lugs
- Large Capacity Fuel Tank¹
- Standard External Fuel Connections
- Standard Programmable Start/Stop for Standby Applications
- Electric Fuel Primer & Air-Bleed (EFPA) Pump
- Hydraulic Surge Brakes Standard
- Lockable Switch / Voltage Selector
- Curbside Fluid Maintenance / Side Fork Pockets (MP25)
- Trailer DOT Compliant 49 CFR
- Trailer Optional
- Warranty Coverage / Product: 2 Years/2,000 Hour Limited Warranty*
- GPS Ready

Model Number	MP25	MP40	MP45	MP65-8B1
Armature Connection	Star with Neutral/Zig/Zag			
Number Of Poles	4 Pole			
Insulation	Class F			
Excitation	Brushless with AVR			
Voltage Regulation Percentage	0.50%			
Power Factor	0.80			
Frequency – Hz (Switchable)	60 (50)			
Standby Power – kVA (kW)	27.5 (22)	39 (31.2)	48.5 (38.8)	67 (53.6)
Prime Power – kVA (kW)	25 (20)	38 (30.4)	45 (36)	63 (50)
Voltage Single Phase (Switchable) (V)	120 / 240 / 277			
Voltage Three Phase (Switchable) (V)	208 / 240 / 416 / 480			
Amperage Single Phase 120 V (A)	60 x 2	91 x 2	108 x 2	152 x 2
Amperage Single Phase 240 V (A)	60	91	108	152
Amperage Three Phase 208 V (A)	65	105	119	167
Amperage Three Phase 240 V (A)	60	91	108	152
Amperage Three Phase 480 V (A)	30	46	54	76
Engine Brand	Isuzu	Kubota	Isuzu	Isuzu
Engine Model	4LE2T	V3300	4LE2X	4JJIX
EPA Emissions Certified	Tier 4 Final	Interim Tier 4	Tier 4 Final	Tier 3 Flex
Number of Cylinders	4	4	4	4
Output @ Rated Speed (1,800 RPM) – HP	33	47	59	98
Governor Type	Isochronous			
Integral Fuel Tank Capacity (gal)	52	106	106	106
Full Fluid Containment	110%			
Lubricating Oil Capacity gal (L)	2.7 (10.4)	3.4 (13.2)	3.1 (11.7)	4.0 (15.0)
Coolant Capacity gal (L)	2.7 (10.4)	2.9 (11.0)	2.5 (9.5)	2.9 (11.0)
Battery (V)	12	12	12	12
Run Time @ Full Load	31+	40+	36+	28+
Length W/O Trailer (in)	67	82	82	82
Width W/O Trailer (in)	32	39	38	39
Height W/O Trailer (in)	55	61	61	61
Dry Weight (lbs)	1,764	2,555	2,425	2,877
Operating Wet Weight (lbs)	2,161	3,325	3,197	3,660
Sound Level @ 23 ft (NO LOAD) – dBA	< 63	< 61	< 64	< 63
Trailer Length (in)	120	140	140	140
Trailer Width (in)	61	66	66	66
Trailer Height (in)	28	25	26	26
Trailer Weight (lbs)	610	950	950	950
Trailer GVWR (lbs)	3,500	5,750	5,750	5,750

¹Unit runs at full load for 24+ hours. Allmand has a policy of continuous product improvement and reserves the right to modify its specifications at any time and without prior notice. See operator's manual or www.allmand.com website for complete warranty details.

OPTIONS



Camlocks

- Interchangeable electrical connectors that can be used in either single or three phase modes
- Single set of 5 Camlocks



Arctic Package

- 50 W 120 V battery heater pad
- 1,000 W 120 V thermosiphon block heater with thermostat to maintain temperature



Battery Charger (MP25 Only)

- 5 A 120 V with 3 stage charge cycle

Lockable Battery Disconnect (MP25 Only)

Electric Brake on MP65



WHY ALLMAND®

When it comes to managing a jobsite, you want equipment that will not fail you when you need it most. You're looking for trust and reliability. Allmand® brings that to your jobsite, with over 75 years of respected experience. Our focus on Service and Support allows users to get the parts, technical service and support they need. Product innovation has helped us develop state-of-the-art towable jobsite equipment, bringing portable light towers, mobile industrial heaters, portable light stands, portable air compressors and mobile generators for the construction, mining, oil & gas, and rental markets.



Holdrege, Nebraska 68949
P: (800) 562-1373 • F: (308) 995-5887
www.allmand.com

SINCE 1938

Storage

Aircraft storage space is subject to change based on partner needs. Storage needed may be reduced if we're able to use partner storage. Storage containers may also be added.

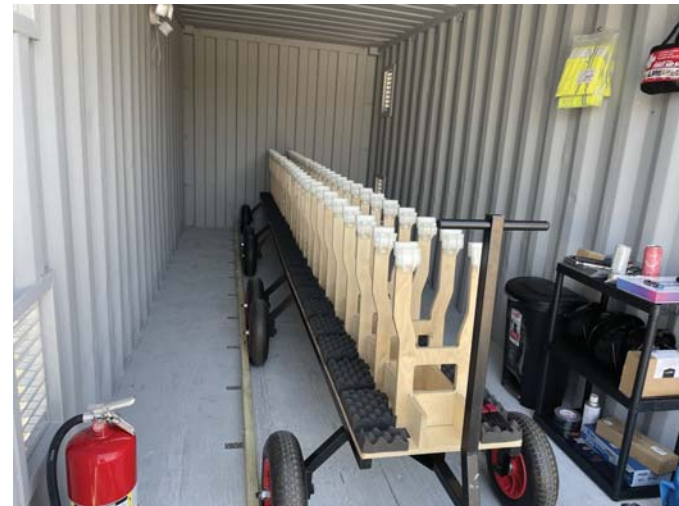
The Nest shall provide aircraft storage for 1.5 times the number of charge pads.

The Ground Support Operator shall place aircraft in storage at the end of daily operations.

Example of standard 20' container

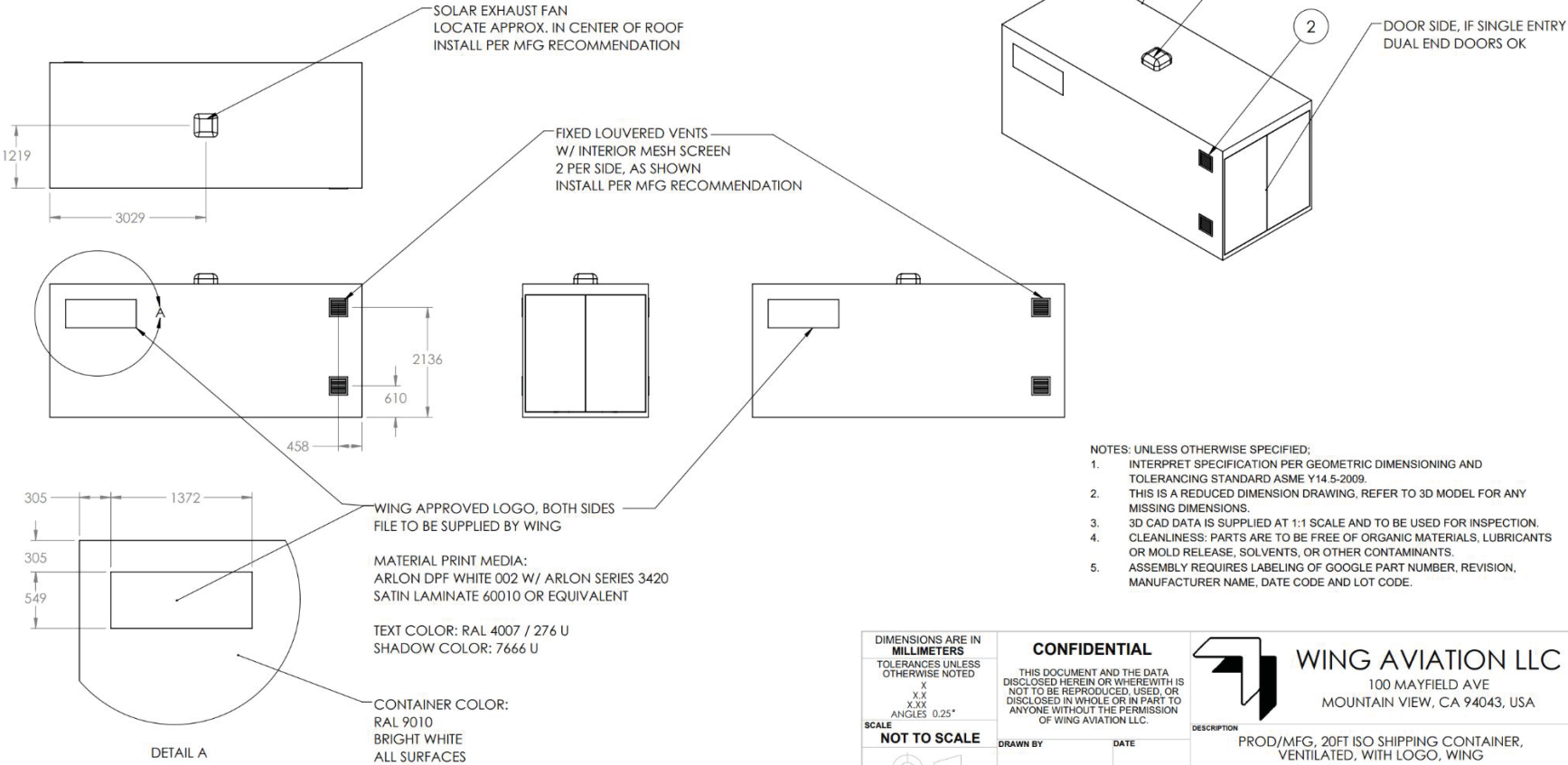
***Current Storage Specifications:**


- Weight: 4868 lbs pounds empty weight
- Dimensions: 20' x 8' x 8' (LxWxH)
- Features: 4 passive side vents and top solar fan
- Anchoring (city dependant): Anchor spec based on ground type and following city requirements

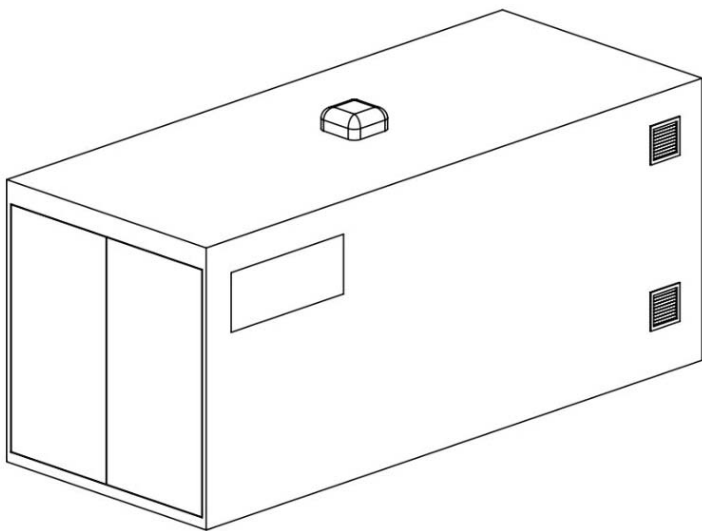


ITEM NO.	DESCRIPTION	QTY.
1	ISO 6346 22G0/22G1 OR EQUIVALENT 20FT CONTAINER	1
2	LOUVERED VENT WITH INTERIOR MESH SCREEN	4
3	SOLAR EXHAUST FAN	1
4	FLOOR TRACK SYSTEM, STANDARD LUMBER	1

REVISIONS				
ZONE	REV	DESCRIPTION	APPROVED	DATE



DIMENSIONS ARE IN MILLIMETERS TOLERANCES UNLESS OTHERWISE NOTED X X.X X.XX ANGLES 0.25° SCALE NOT TO SCALE THIRD ANGLE PROJECTION	CONFIDENTIAL THIS DOCUMENT AND THE DATA DISCLOSED HEREIN OR WHEREWITH IS NOT TO BE REPRODUCED, USED, OR DISCLOSED IN WHOLE OR IN PART TO ANYONE WITHOUT THE PERMISSION OF WING AVIATION LLC.		 WING AVIATION LLC 100 MAYFIELD AVE MOUNTAIN VIEW, CA 94043, USA	
	DRAWN BY APPROVED BY	DATE DATE	DESCRIPTION PROD/MFG, 20FT ISO SHIPPING CONTAINER, VENTILATED, WITH LOGO, WING	SIZE B
			GOOGLE PART NUMBER 410-01397-00	REV 01



20FT GENERAL PURPOSE CONTAINER REFERENCE SPECIFICATIONS	
ISO 6346 22G0/22G1 OR EQUIVALENT	
DOOR CONFIGURATION	END OPENING, ONE OR BOTH SIDES
FLOOR MATERIAL	WOOD
TARE WEIGHT	2350 KG MAX
	DIMENSION (MM)
EXT. LENGTH	6058
EXT. WIDTH	2438
EXT. HEIGHT	2590
INT. LENGTH	5898
INT. WIDTH	2352
INT. HEIGHT	2395
DOOR OPENING WIDTH	2340
DOOR OPENING HEIGHT	2280
LOAD HEIGHT (GROUND TO FLOOR)	170

Support Imagery

1

Imagery

