

Walmart + Wing Operations in Wylie

On-demand drone
delivery service



Confidential and Proprietary

Content Overview

- 1 Walmart Innovation Program
- 2 Site Set Up
- 3 Wing Operations





Walmart and Wing

- Launched in DFW Metroplex with 2 pilot locations in Frisco and Lewisville.
- Now operating in North Richland Hills, Fort Worth, and Arlington.

Autonomous Drone Delivery

Wing & Walmart are taking last-mile delivery to new heights, with a new level of **speed, reliability, sustainability**, and **cost-effectiveness**.

Our partnership is helping to meet the demand for last-mile delivery by:

- **Walmart** leading operations for local stores.
- **Wing** leading logistics of the delivery drones at each store.



Walmart and Wing

Why drone delivery?



Safer

40,000+ people impacted by car accidents on U.S. roads each year.



Cleaner

When you order a box of pasta from Walmart, you use more energy boiling the water than we use flying it to your home.



Faster

Most drone deliveries arrive in under 30 minutes to customers' homes.



Cheaper

Drone delivery offers an economically viable way to deliver small packages locally.



Reduce roadway congestion

Your store pickups should not always require getting on the roads with a 2-ton car.



Create new and innovative jobs

Drones are one of the most promising aviation innovations in a generation.



Provide greater access

Drones help provide access to essential items, . groceries and over-the-counter medications



Maintain tech leadership

This is an opportunity for municipalities to be on the cutting edge of supply chain technology.

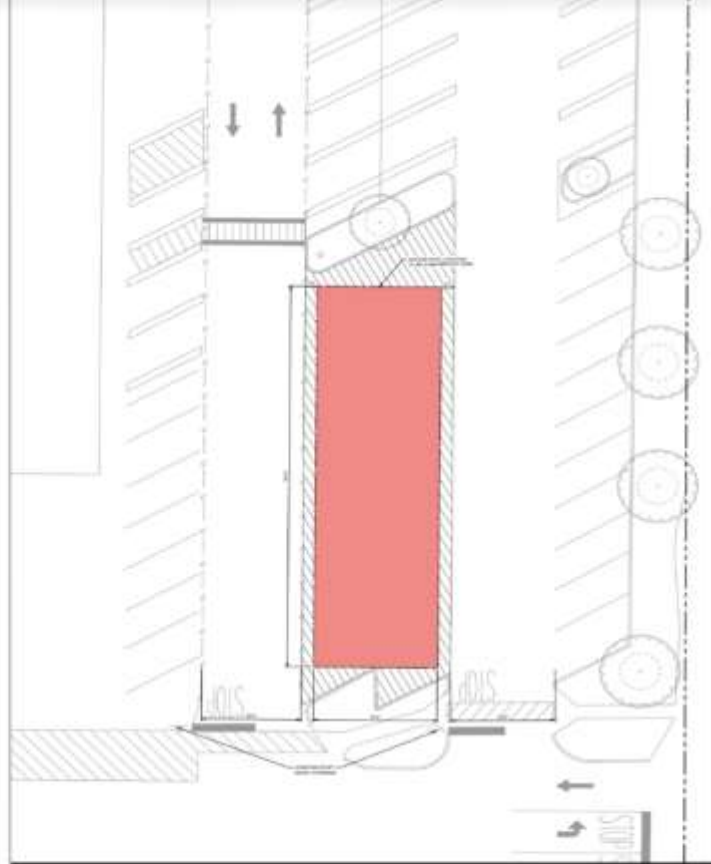




Wylie Site Set-Up



NOTES	
1. SEE EXISTING SITE PLAN FOR EXISTING UTILITIES AND STRUCTURES.	
2. SEE EXISTING SITE PLAN FOR EXISTING UTILITIES AND STRUCTURES.	
3. SEE EXISTING SITE PLAN FOR EXISTING UTILITIES AND STRUCTURES.	
SITE DATA TABLE	
GENERAL INFORMATION	WALMART BUILDING NO. 5210
PROJECT NAME	WALMART BUILDING NO. 5210
PROJECT ADDRESS	100.042 SF
PROJECT CITY	100.042 SF
PROJECT STATE	100.042 SF
PROJECT ZIP	100.042 SF



INSET A
SCALE: 1"=10'

PARKING INFORMATION											
WALMART BUILDING AFO		AMU PARKING REQUIRED	WALMART PARKING REQUIRED	REGULAR PARKING STALLS PROVIDED	OSP PARKING STALLS PROVIDED	WING PARKING STALLS REMOVED	ADA PARKING STALLS PROVIDED	CHRT CORRAL STALLS PROVIDED	TOTAL STALLS PROVIDED	TOTAL AMU PARKING RATIO	TOTAL WALMART PARKING RATIO
BUILDING SF ¹		SPACES	SPACES	SPACES ^{1,2}	SPACES ^{1,3}	SPACES ^{1,2}	SPACES ^{1,4}	SPACES ^{1,4}	SPACES ^{1,5}	SPACES ¹	SPACES ¹
EXISTING	100.042 SF	627 SPACES 1.00/1000 SF	753 SPACES 4.00/1,000 SF	682	10	0	10	40	720	0.24/1000 SF	0.82/1,000 SF
PROPOSED	100.042 SF	627 SPACES 1.00/1000 SF	753 SPACES 4.00/1,000 SF	682	0	10	10	40	750	0.24/1000 SF	0.82/1,000 SF

1. WALMART BUILDING AFO
2. EXISTING PARKING RATIO IS BASED ON ORIGINAL, CURRENTLY IN PLACE AND A REVIEW OF PLANS AND AERIAL PHOTOGRAPHS
3. PARKING SPACES OCCUPIED BY CHART CORRALES AND ARE NOT BEING EXCLUDED FROM THE PARKING COUNT AND PARKING RATIO
4. PARKING AND STOPPING OF VEHICLES, EQUIPMENT, OR STAGING AREAS OUTSIDE OF THE PARKING AREA BEING ALLOWED

DESIGN / CODE SUMMARY

REDUCTION OF PARKING STALLS:
OPTION 1 - 10 STALLS

ENTITLEMENT SUMMARY:
TBC

DISCLAIMERS

PRELIMINARY DESIGN CONCEPT ONLY

PLANNED OR PROPOSED ARE NOT GUARANTEED TO BE APPROVED BY THE CITY

SCOPE: TBC	06/20/2021
PROJECTED ENTITLEMENT SUBMITTAL:	06/20/2021
PROJECTED ENTITLEMENT APPROVAL:	06/20/2021
PROJECTED PERM:	06/20/2021
PROJECTED PERMIT APPROVAL:	06/20/2021
PROPOSED DATE:	06/20/2021
CONSTRUCTION COMPLETE:	06/20/2021



#5210
WYLIE, TX

Kimley»Horn



Space & Power Requirements

The minimum space required is determined by the number of chargepads and required aircraft storage. The following table shows the standard minimum Nest size and power requirements.

*One parking spot is 9ftx18ft or 162 sq ft (2.7 m x 5.5 m; 14.85 sq m)

*Generator specifications:

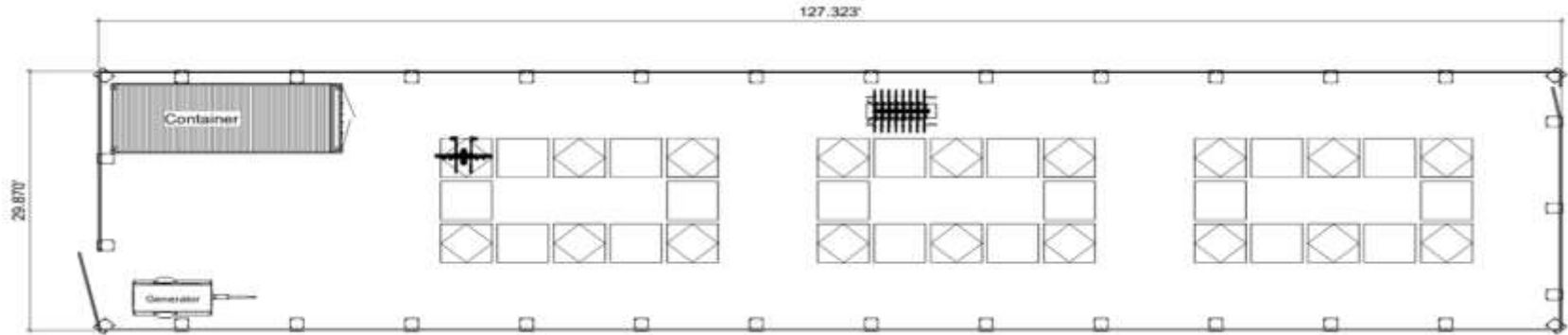
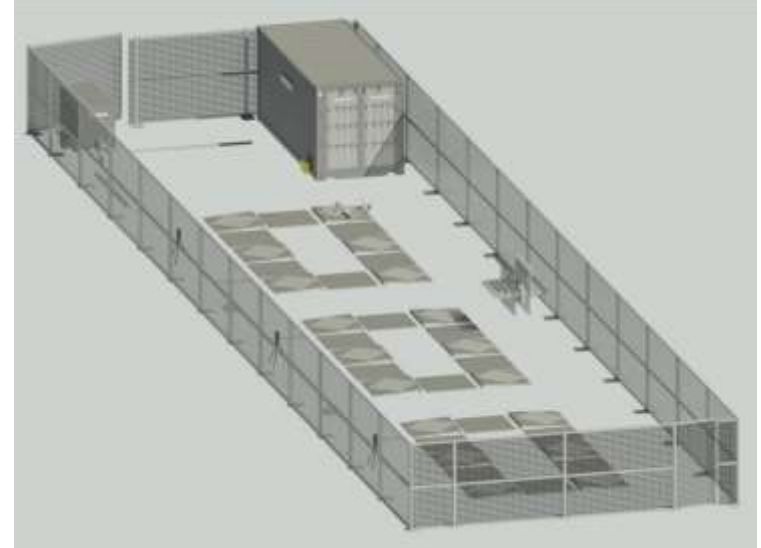
- Dimensions(lwh): 123.3" x 54.8" x 61" (inches)
- Operating wet weight: 2780 lbs (pounds)
- Fuel type: Diesel
- **Running decibel level (loaded) : 63 dbA at 23'**
- Earth-Grounded

Charging pad QTY	Length	Width	Flight line (with storage)	Aircraft storage (L/W/H in ft)	Minimum electrical power needed	Throughput/hr (1.5 deliveries/hr/pad)
*18 pads (min req. space w/out fence)	125.8ft (38.3m)	29.5ft (9m)	3711 sq ft (345.6sq m) ~28 parking spots	8/20/8 (2.4/6/2.4 m)	14 kW	27 deliveries
*18 pads (w/fence)	127.33ft (38.8m)	29.87ft (9.1m)	3803.34 sq ft (353.08sq m) ~28 parking spots	8/20/8 (2.4/6/2.4 m)	14 kW	27 deliveries

Sample 18-Chargepad Nest

As-built rendering of an 18 pad nest

- 3 x groupings of 6 chargepads and fiducials
- 1 x 20' storage container
- 1 x Generator (site/partner dependant)
- Visible aircraft cart



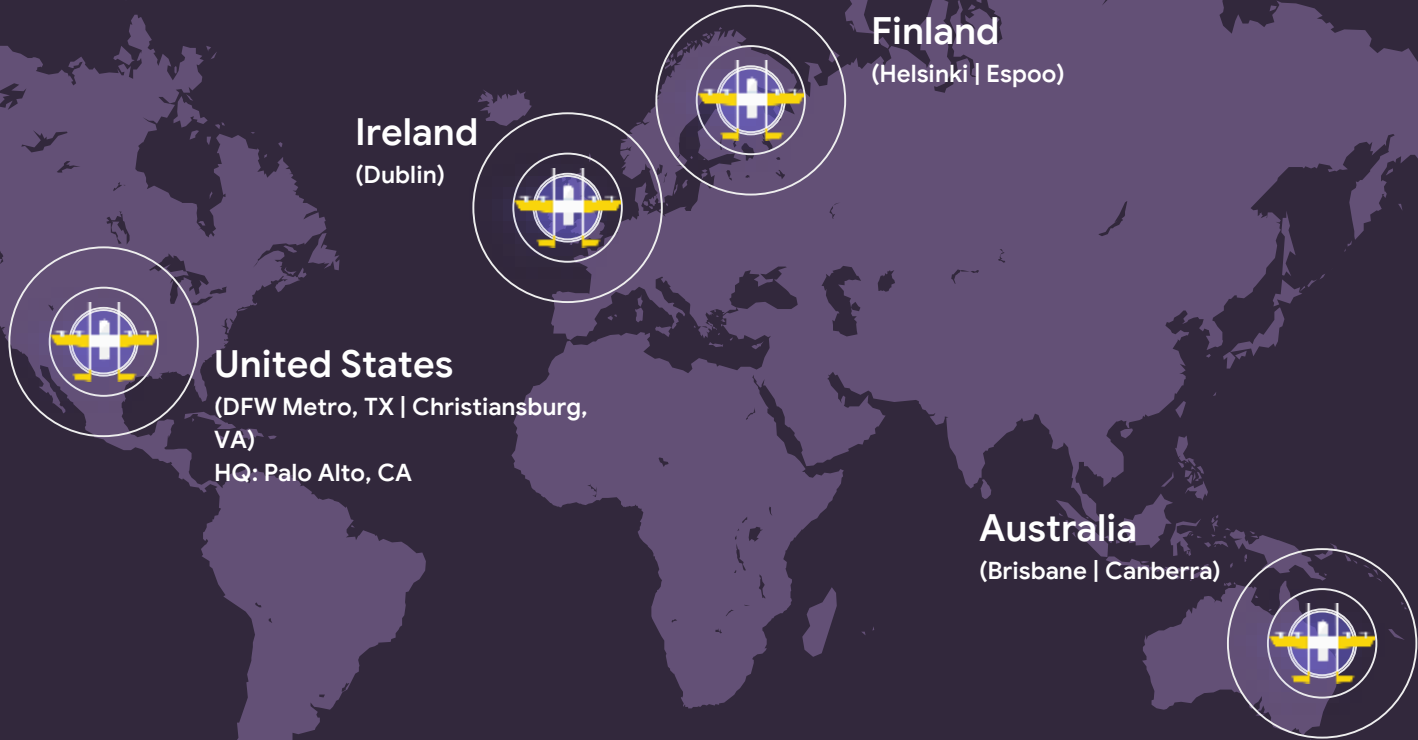
Support Imagery





Wing Drone Delivery

Completed 350,000+ deliveries to customers on on three continents.



Approved by the FAA

Wing holds a **Part 135 Air Carrier Certificate**, which is the same level of certification as many commercial airliners.

The FAA required a rigorous environmental review as part of the approval process to operate in the **Dallas-Fort Worth Metroplex**.

- Potential impacts on the communities where we operate were included in that review.
- Regulators also inspected Wing's aircraft, personnel and operations for safety.



Delivery Drone in Lancaster

Carries
2.6lbs / 1.2kg

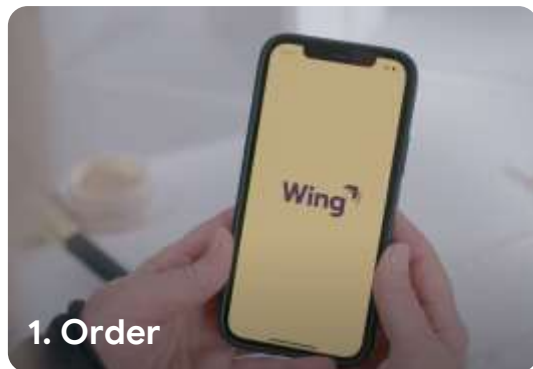
Weighs
11.4lbs / 5.15kg

Delivers
6 miles / 10km

Hours of Operations
7 days a week / 10am-7pm*

*Wing only operates during daylight hours and will adjust delivery hours with daylight savings time.

How it works



Thank you!

To learn more about Wing, visit us at wing.com.

Questions? Contact our team at howdy@wing.com.