

LEGEND

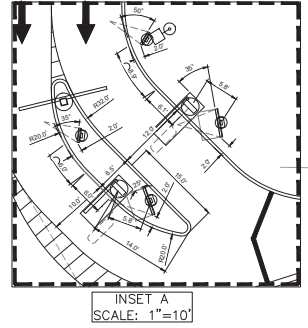
LIGHT STANDARD (15' CLEAR FROM ALL OVERHEAD UTILITY LINES) (24" CLEAR FROM BACK OF CURB)
ROAD SIGN MONUMENT
McDONALD'S DIGITAL MENU BOARD
McDONALD'S ORDER HERE CANOPY
McDONALD'S DIGITAL PRE-BROWSE BOARD
McDONALD'S DOUBLE GATEWAY
McDONALD'S DIRECTIONAL SIGN
DETECTOR LOOP (LOCATION TO BE APPROVED BY McDONALD'S) (RE: C10.0 STANDARD DETAILS)
"DRIVE-THRU" WITH "CIRCLE / ARROW" - COLOR: YELLOW
"THANK YOU" AT END OF PATH - COLOR: GOLD
"CIRCLE / ARROW" - COLOR: GOLD
ARROW PATH DIRECTION - COLOR: WHITE
STRAIGHT DRIVE-THRU "ARROW MARKING" - COLOR: GOLD
MOBILE PARKING "MOBILE MARKING" - COLOR: GOLD

MARK	MARK DESCRIPTION
1	CONCRETE VERTICAL CURB @ DRIVE-THRU (RE: C10.2 STANDARD DETAILS)
2	CONC CURB @ NON DRIVE-THRU AREAS (RE: C10.2 STANDARD DETAILS)
3	TURN DOWN CURB (RE: C10.3 STANDARD DETAILS)
4	REINFORCED CONCRETE SIDEWALK (RE: C10.3 STANDARD DETAILS)
5	H.C. ACCESS RAMP @ 1:12 MAX SLOPE (RE: C10.1 STANDARD DETAILS)
6	HANDICAP ACCESSIBLE SPACES / SYMBOLS / CROSSWALK - COLOR: (PER STATE/CITY REQUIREMENTS)
7	HANDICAP ACCESSIBLE SIGN POLE MOUNTED (RE: C10.1 STANDARD DETAILS)
8	McDONALD'S OOSP SIGN (RE: C10.4 STANDARD DETAILS)
9	McDONALD'S DELIVERY / COURIER SIGN (RE: C10.4 STANDARD DETAILS)
10	McDONALD'S MOBILE CURBSIDE SIGN (RE: C10.4 STANDARD DETAILS)
11	BOLLARD (RE: C10.1 STANDARD DETAILS)
12	5' GUARDRAIL @ INGRESS/EGRESS DOOR (RE: C10.1 STANDARD DETAILS)
13	FLAG POLE (35' MAX. HEIGHT)
14	POLE MOUNT TRANSFORMER (RE: C9.0 UTILITY PLAN)
15	LANDSCAPE FINISH GRADE 1" BELOW TOP OF CURB IN ALL LAWN AREAS AND 2" BELOW TOP OF CURB IN ALL BED AREAS
16	MOUNTABLE CURB RAISED ISLAND (RE: C10.3 STANDARD DETAILS)
17	6" DRIVE-THRU STRIPING - COLOR: GOLD
18	4" DIAGONAL PAINTED ISLANDS AT DRIVE-THRU - COLOR: GOLD
19	6" MERGE POINT - COLOR: GOLD
20	4" PARKING STALL STRIPING - COLOR: WHITE (1YP)
21	4" DIAGONAL PAINTED ISLANDS IN PARKING AREA - COLOR: WHITE
22	4" OOSP, MOBILE & COURIER STRIPING - COLOR: GOLD
23	FIRE LANE STRIPING PER CITY OF WYILE FIRE CODE STANDARDS
24	DRAINAGE STRUCTURE (REF. C8.2 STORM SEWER PLAN)
25	DO NOT ENTER SIGN

SITE INFORMATION	
LAND AREA:	45,180 SF (1,037 AC)
CURRENT ZONING:	CC - CORRIDOR COMMERCIAL
EXISTING USE:	UNDEVELOPED
PROPOSED USE:	RESTAURANT W/DRIVE THRU
BUILDING AREA (APPROXIMATE):	3,541 SF
BUILDING LOT COVERAGE:	3,541 SF/45,180 SF = 7.84%
PARKING REQUIRED:	1 SPACE PER 150 SF
PARKING PROVIDED:	3,541 SF/150 SF = 24 SPACES
HANDICAP PARKING REQUIRED:	2
HANDICAP PARKING PROVIDED:	2
EXISTING IMPERVIOUS AREA:	0 SF
PROPOSED IMPERVIOUS AREA:	32,267 SF
PROPOSED LANDSCAPE PERCENTAGE:	28.58%

NOTICE TO CONTRACTOR

CONTRACTOR TO VERIFY ELEVATIONS AT ALL CONNECTIONS POINTS WITH THE ADJACENT PROPERTY PRIOR TO ANY SITE MOBILIZATION OR SITE CLEARING ACTIVITIES. CONTRACTOR TO NOTIFY ENGINEER OF RECORD FOR ANY CONFLICTS.



NOTICE TO CONTRACTOR

INFORMATION SHOWN FOR EXISTING UTILITIES, ROADWAY, PARKWAY, ETC ARE BASED UPON RECORD DRAWINGS PROVIDED BY THE DEVELOPER CLAYMOORE ENGINEERING DATED DECEMBER 2024 AND WERE NOT PART OF THE TOPOGRAPHIC SURVEY PERFORMED FOR McDONALD'S. CONTRACTOR SHALL IMMEDIATELY NOTIFY ENGINEER IF DEVIATIONS OR DIFFERENCES ARE FOUND IN THE FIELD PRIOR TO BEGINNING ANY CONSTRUCTION WORK

STANDARD ACCESSIBILITY REQUIREMENTS	
PARKING:	
ACCESSIBLE PARKING SPACES SHALL BE AS NOTED TO A MIN. 96" WIDE OR A MIN. 132" WIDE FOR VAN DESIGNATED SPACES WITH A MAXIMUM SLOPE OF 2% (IN ALL DIRECTIONS). ALL BUILDINGS SHALL HAVE AT LEAST ONE VAN ACCESSIBLE SPACE.	
EACH ACCESSIBLE PARKING SPACE SHALL HAVE A VERTICALLY MOUNTED (OR SUSPENDED) SIGN SHOWING THE SYMBOL OF ACCESSIBILITY. AT LEAST ONE SPACE MUST INCORPORATE "VAN ACCESSIBLE" BELOW THE SYMBOL OF ACCESSIBILITY. SIGN SHALL BE LOCATED NOTED TO 80" (MIN) ABOVE THE ADJACENT PAVED SURFACE TO BOTTOM OF TEXT.	
ALL ACCESSIBLE AREAS SERVING ACCESSIBLE PARKING SPACES SHALL BE AS NOTED TO A 6" WIDE MINIMUM.	
RAMPS:	
RAMPS EXCEEDING 6" IN RISE (EXCLUDING CURB RAMPS) SHALL HAVE APPROPRIATE EDGE PROTECTION WITH HANDRAILS ON EACH SIDE AT BETWEEN 34" AND 38" AND EXTEND 12" BEYOND THE TOP AND BOTTOM OF RAMP. HANDRAILS SHALL NOT OBSTRUCT THE CLEAR AREA REQUIRED FOR TOP AND BOTTOM LANDINGS SERVING THE RAMPS.	
IF REQUIRED BY LOCAL OR STATE JURISDICTION, RAMPS SHALL CONTAIN A TRUNCATED DOME SURFACE ARRANGED SO THAT WATER WILL NOT ACCUMULATE. COLOR OF RAMP FINISH MATERIAL (INCLUDING CONCRETE) SHALL HAVE A LIGHT AND REFLECTIVE VALUE AND MUST CONTRAST SIGNIFICANTLY TO DISTINGUISH IT FROM ADJACENT SURFACES - (FOR PAINT STRIPE).	
LANDINGS FOR RAMPS SHALL BE AS WIDE AS THE RAMP AND 60" LONG MINIMUM (36" MINIMUM FOR CURB RAMPS).	
RAMPS SHALL NOT EXCEED A 1:12 RUNNING SLOPE OR 30" VERTICAL RISE.	
RAMPS AND LANDINGS SHALL NOT EXCEED 1:48 (2% CROSS SLOPE).	
SIDEWALKS AND ACCESSIBLE ROUTES:	
SIDEWALKS MUST BE AT LEAST 36" WIDE WITH A CROSS SLOPE THAT SHALL NOT EXCEED 1:48 (2%).	
LONGITUDINAL SLOPE OF ANY SIDEWALK (ACCESSIBLE ROUTE) SHALL NOT EXCEED 1:20 (5%).	

Revisions

Date	Description	No.
McDonald's USA, LLC		
These drawings and specifications are the confidential and proprietary property of McDonald's USA, LLC and shall not be copied or reproduced without written authorization. The contract documents were prepared for use on this specific site in conjunction with the base site and are not suitable for use on a different site or at a later time. Use of these drawings for reference or example on another project requires the services of properly licensed architects and engineers. Reproduction of the contract documents for reuse on another project is not authorized.		
THIS DOCUMENT IS RELEASED FOR THE PURPOSE OF REVIEW. AGENCY APPROVAL AND COMMENT UNDER THE AUTHORITY OF G. ROBERT ADAMS, P.E. REGISTRATION NO. 00181, ON 04/17/25. THIS DOCUMENT IS NOT TO BE USED FOR CONSTRUCTION PURPOSES.		

LANGAN
Langan Engineering and Environmental Services, LLC
2989 Olympus Blvd, Suite 165
Dallas, TX 75219
T: 817.328.3200 www.langan.com

Project: **McDONALD'S NEW RESTAURANT**
LC #042-3468 / NSN #1329
STATE HIGHWAY 78 & N. KREYMER LANE
WYILE

COLLIN COUNTY TEXAS
Drawing Title

SITE PLAN

Project No. 520067901	Drawing No. C4.0
Date MARCH 2025	Drawn By JPA
Checked By MEG	Sheet 6 of 24

811
Know what's below.
Call before you dig.



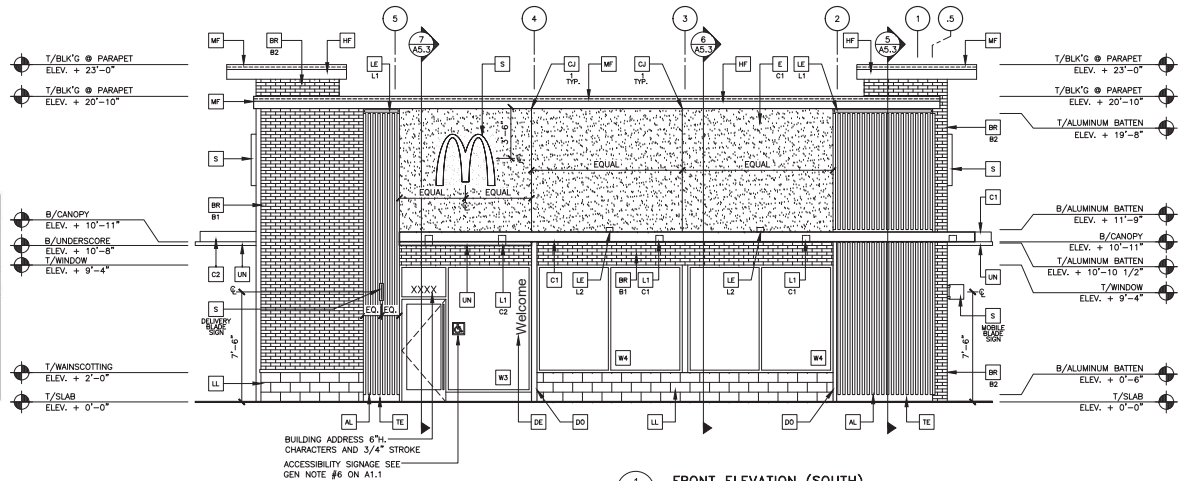


BUILDING MATERIAL CALCULATIONS BUILDING										
Materials	Front Elevation		Non-DT Elevation		Drive-Thru Elevation		Rear Elevation		Totals	
Brick	SF	%	SF	%	SF	%	SF	%	SF	%
Limestone	113	15.74%	886	62.84%	967	59.14%	573	63.87%	2,537	54.37%
Stucco	70	9.75%	168	11.84%	239	14.62%	99	11.07%	576	12.34%
Metal Trim/Battens	350	48.75%	273	19.24%	72	4.40%	32	3.58%	727	15.58%
Totals (Excluding Glazing)	543	75.24%	1,365	97.92%	1,278	78.16%	634	70.60%	3,820	81.29%
Glazing/Openings	237	32.76%	323	23.06%	194	10.61%	64	7.17%	818	17.71%
Total Facade	780	100%	1,688	100%	1,472	100%	698	100%	4,656	100%

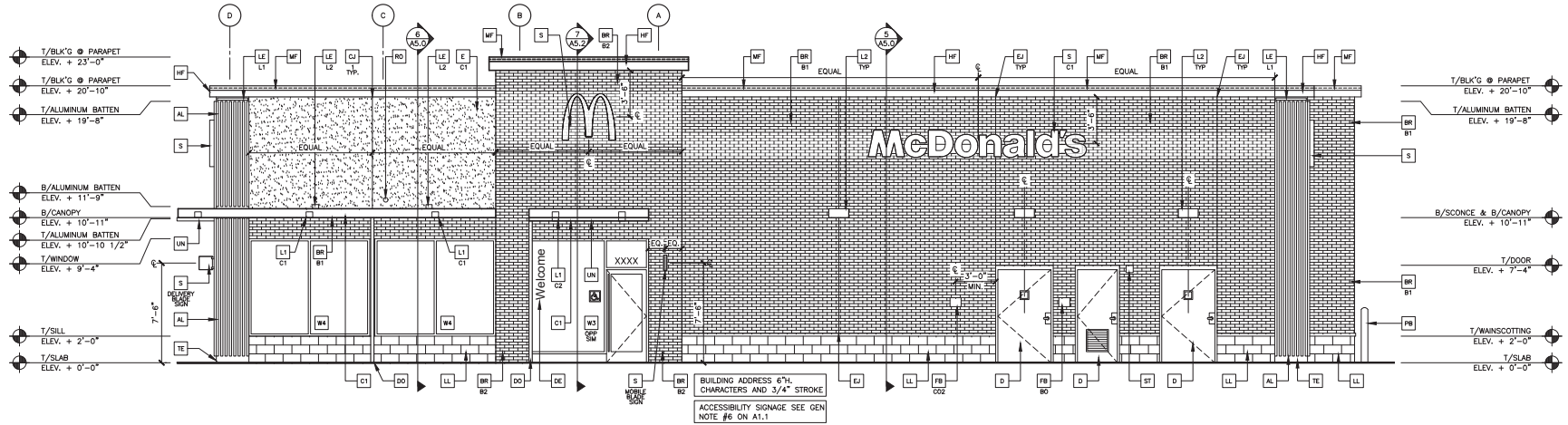
BR - BRICK "ONYX" LL - LIMESTONE "LINEN" BR - BRICK "SLATE GRAY"



CN - ALUM CANOPY WHITE
UN - UNDERSORE YELLOW
AL - ALUMINUM BATTENS
AP - APOLIC METAL PANELS



1 FRONT ELEVATION (SOUTH)
1/4" = 1'-0"



2 NON-DT ELEVATION (EAST)
1/4" = 1'-0"

KEY NOTES:

- AL ALUMINUM BATTEN SYSTEM
SIZE: 2"x2" PROFILE COLOR: WOOD GRAIN "EARL WALNUT"
BACKRAL UNFINISHED, ENDOCAP PAINTED TO MATCH
SUBSTRATE: 1/2" EXTERIOR HIGH DENSITY OVERLAY (HDO) PLYWOOD, BR.
GROUP 1, HDO BOTH FACES, APA TRADEMARKED.
COARSE GRIT SAND SURFACES PRIOR TO PRIMING, PRIME AND PAINT BOTH
SIDES AND ALL EDGES PRIOR TO INSTALLATION.
SUBSTRATE COLOR: "IRON GREY" SW 7069 BY SHERWIN WILLIAMS
- AP ALPOLIC METAL PANEL (COLOR: DON GRAY)
- BR MODULAR FACE BRICK COLOR:
BT = "SLATE GRAY" SMOOTH BY HERBON BRICK COMPANY
B2 = "ONYX" SMOOTH BY HERBON BRICK COMPANY
(GROUT TO MATCH BRICK COLOR AS POSSIBLE)
- C1 ALUMINUM CANOPY SYSTEM W/FASCIA
COLOR: WHITE
- C2 ALUMINUM CANOPY SYSTEM
COLOR: RAL 7022
- C3 CONTROL JOINT
1-TYPE: 1 = STUCCO
- D HOLLOW METAL DOOR
PAINT: "GAUQUET GREY" SW7019 BY SHERWIN WILLIAMS
- DE DECAL BY GRAPHICS SUPPLIER
SURFACE APPLIED, YIELD INSTALLED, PRE CUT, PRE SPACED.
SUPPLIERS:
VONKLE (866) 330-7337, vonklee@vonnkle.com
GEX INTERNATIONAL (847) 543-4600, mcdonaldsdecor@gyl.com
- DO 3" DOWNPOUT BY CANOPY SYSTEM MANUFACTURER
COLOR: RAL 7022
- E 7/8" 3-COAT STUCCO SYSTEM, REF WALL ASSEMBLY NOTES
COLOR: "IRON GREY" SW 7069 BY SHERWIN WILLIAMS
- EJ EXPANSION JOINT, SEE DETAIL 7/A.1
- FB CO2 = BULK CO2 FILL BOX (ECPM SCHEDULE ITEM 49.00)
BO = BULK OIL FILL BOX (ECPM SCHEDULE ITEM 700.18)
- GR GUARD RAIL -SEE SITE PLAN FOR EXACT LOCATION AND LENGTH
USE SPANLESS STEEL OR GALVANIZED STEEL
- HF JAMES HANCO FASCIA BOARD & VENTED SOFFIT
PAINT TO MATCH RAL 7022
- LI RECESSED DOWN LIGHT FIXTURE - SEE ELECTRICAL
C1= WHITE OR C2= GOLD
- L2 RAIL, SCONCE LIGHT FIXTURE - SEE ELECTRICAL
COLOR: BRONZE
- LE ACCENT LIGHTING - SEE ELECTRICAL
L1= LED LIGHTS
L2 = UP ONLY FLOOD FIXTURE
- LL NATURAL LIMESTONE BY SALADO LIMESTONE
(ARCHITECTURAL, CUT) FINISH: ROND SIZE: 8"x16"x4"
COLOR: LINEN FINISH: BRUSHED
- LF LIMESTONE TO HAVE 1/4" RATED MORTAR JOINTS
(MORTAR COLORS TO BE LIGHT GRAY/WHITE)
SUBMIT TO ARCHITECT FOR APPROVAL
- MF METAL FASCIA - PRE-FAB ANCHOR-TITE FASCIA
COLOR: RAL 7022
- PT (RANCH) COW COLLECTOR MODEL #PPT STD
CALL 1-888-743-7435 TO ORDER
- PR PIPE BOLLARD - PAINTED YELLOW
- RO ROOF DRAIN OVERFLOW PIPE PAINT TO MATCH SURROUNDING MATERIAL
- S1 McDONALD'S SIGNAGE BY OTHERS - UNDER SEPARATE PERMIT.
C1= COLOR
C2= WEATHERED ZINC RACEWAY
C3= RAL 7022 RACEWAY
- ST CO2 STROKE/ALARM, SEE MECHANICAL DRAWINGS
FOR SPECIFICATION.
- TE TRU EXTERIOR 1"x6" TRIM, PAINTED ON SITE
COLOR: "IRON GREY" SW 7069 BY SHERWIN WILLIAMS
- UN METAL UNDERSORE
COLOR: GOLD
- WF EXTERIOR WINDOW ASSEMBLY - TEMPERED GLASS
COLOR: DARK BRONZE SEE SHEET A.2.0
(SPANDREL)-OPAQUE TEMP. SPANDREL GLASS
- W2 DRIVE-THRU WINDOW BY READY ACCESS
MODEL: 600 SERIES, 36" SERVICE HEIGHT WITH TRANSOM, MANUAL
OPER. ELECTRONIC RELEASE
COLOR: DEEP BRONZE
L-SLIDE DIRECTION: RL = RIGHT TO LEFT
LL = LEFT TO RIGHT

McDonald's USA, LLC

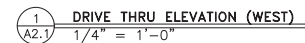
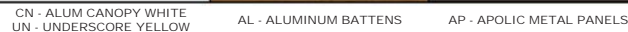
2024 STANDARD BUILDING - BB20
4554-WOOD/WOOD

DATE ISSUED: JAN 2024
DATE REVISION: JAN 2024
DATE REVISION: JAN 2024
DATE REVISION: JAN 2024

REVISIONS:

NO.	DATE	DESCRIPTION
1	01/16/2024	STUCCO BATTEN/METAL BRICK EXTERIOR FINISHES
2	01/16/2024	SEC OF DATE HPT 78 & BREWER LANE, WILE TEXAS

PROJECT NO. 24-0116
SHEET NO. A2.0
ELEVATIONS

BR - BRICK "ONYX" LL - LIMESTONE "LINEN" BR - BRICK "SLATE GRAY"

SHEET NO.	TITLE	2024 STANDARD BUILDING – BB20	DRAWN BY	JAW
		4584–WOOD/WOOD	STD ISSUE DATE	2024
JAINA 24–0116 A2.1 ELEVATIONS	DESCRIPTION	WOOD BEARING WALLS W/4" BRICK/STONE VOMER WOOD ROOF TRUSS FRAMING STUCCO/METAL/STONE/BRICK EXTERIOR FINISHES	REVIEWED BY	JAW
	SITE 10	SITE ADDRESS	DATE ISSUED	08/16/2024