



PUBLIC WORKS

Department Presentation

May 25, 2021





CITY OF
WYLIE

PUBLIC WORKS

OFFICE HOURS 7:00AM - 3:30PM
(972) 442-7588

4 DIVISIONS:

Utility Administration / Engineering

Streets Division

Fleet Services

Water Utilities

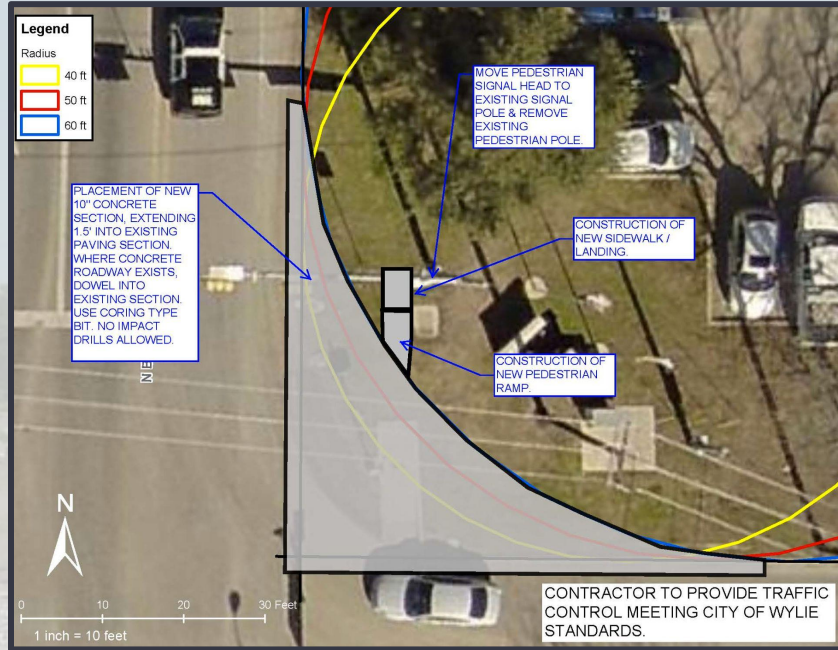
Wastewater Utilities

UTILITY ADMINISTRATION



Admin / Engineering / Construction Inspection

UTILITY ADMINISTRATION – ENGINEERING



Responsibilities:

- Review plans.
- Inspect development and CIP projects.
- Review flood studies
- Coordinate with TxDOT, NTMWD, NCTCOG, Dallas & Collin Counties.
- Right-of-Way permitting.

UTILITY ADMINISTRATION

Capital Projects Completed:

- Nortex IMG Storage Tank
- Public Safety Building
- Wylie WWTP Decommissioning (Clear Site)



UTILITY ADMINISTRATION

Capital Projects In-Progress:

- Stone Road (FM 544) Phase 3
- McMillen Road
- Eubanks Lane
- Ballard Elevated Storage Tank
- Park Blvd (Collin County)
- Muddy Creek WW Treatment Plant (NTMWD)
- FM 2514 (TxDOT)
- Pump Station Backup Generators
- Parker Road Waterline Relocation
- Rowlett Dam #4 Slope Improvements
- FM 544 & Hwy 78 Intersection Improvements
- Country Club & FM 544 Intersection Improvements (TxDOT)

UTILITY ADMINISTRATION



Development Projects:

- Birmingham Bluffs Phase 2
- Brookside Estates
- Collin College
- CVS
- Dominion of Pleasant Valley Ph 3
- Emerald Vista
- Goddard School
- Lake Park Villas
- Malik Paza
- NTMWD Operations Building
- Redwood by the Lake
- Savannah Wylie
- Seventy8 and Westgate
- Stone Circle Townhomes
- Stone Ranch Phase 2
- Valvoline
- Whataburger
- WISD Paving Improvements
- Woodbridge Center Lot 5
- Wylie Auto and Tire
- Wylie Self-Storage



STREETS



Streets / Stormwater / Traffic

STREETS - PAVING

20

**No. of Streets
Department
Employees**



Includes
Superintendent,
Crew Leaders &
Support Staff.

250

**Miles of
Streets in the
City of Wylie**



Equals the
distance from
Wylie to Little
Rock.

43

**Miles of Alley
Pavement in
the City of
Wylie**



1,100 sy of alley
concrete
replaced total.

62

**No. of
Sidewalk
Repairs
Performed in
FY2021**



Currently over 9
month wait for
new requests.

173

**No. of
Potholes
Patched in
FY2021**



Increases each
year due to
aging concrete.

STORMWATER / TRAFFIC / FLEET

124

Estimated Miles of Stormwater Pipe the City Maintains



Estimated 3,900 inlets and 530 manholes throughout the City.

66

Miles of Creeks and Drainageways within the City



Includes floodplain areas throughout the City.

10

No. of Signals the City Currently Maintains



City also maintains 107 school zone flashers.

16

No. of Signals that TxDOT will release to Wylie in 2021 (Est.)



TxDOT waiting on establishment of the new census.

128

No. of Vehicles the Fleet Department Maintains



Incl. Police, PWs, Parks, Code and Inspections.

STREETS – PAVING DIVISION



Responsibilities:

- Street / Alley pavement repair and replacement
- Potholes and crack sealing
- Sidewalk repair and replacement
- Sod restoration, tree trimming, and debris removal
- Road closures, event preparation and emergency response

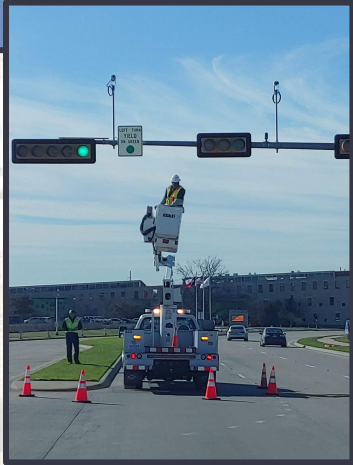
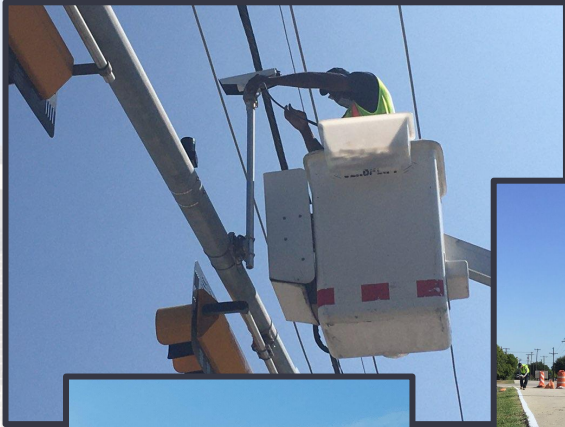
STREETS - STORMWATER DIVISION

Responsibilities:

- Respond to customer issues with drainage
- Channel cleanup, graffiti removal
- Drainage repair
- Road closures due to flooding
- SWPPP Inspections, TPDES report, illicit discharge response
- Mosquito treatment



STREETS – TRAFFIC DIVISION



Responsibilities:

- Sign/signal inspections
- Striping (Birmingham, McMillen, intersections)
- Signal repair
- Signage replacement
- Buttons and crosswalk signage
- School zone signage

FLEET

Responsibilities:

- Service fleet, including PD vehicles
- Service equipment
- Repair and replace items on all units
- Process new vehicle delivery, and prepare for use by staff
- Process retired vehicles and get them ready for auction



UTILITIES



Water / Water Quality / Wastewater

WATER

19

**No. of Water
Department
Employees**



Includes Water
Quality, Crew
Leaders &
Support Staff.

196

**Approximate
Miles of Water
Main in the
City of Wylie**



Wylie system
has approx.
1,908 fire
hydrants.

13k

**Approx. No. of
Meters in the
City of Wylie**



Includes
residential and
commercial
meters.

3

**No. of
Elevated
Storage Tanks
in the City of
Wylie**



14 pumps
supply water
from 3 pump
stations.

2,870

**No. of Water
Samples
Taken by City
Staff FY2021**



Chlorine residual,
bacteriological,
nitrification,
lead/copper &
trihalomethane.

WASTEWATER

12

**No. of
Wastewater
Department
Employees**



Crew Leader,
Equipment
Operators, and
Maintenance
Workers.

229

**Miles of
Gravity and
Pressure
Sewer Main in
the City**



Equals the
distance from
Wylie to Tulsa,
OK.

3,871

**No. of Sewer
Manholes in
the City of
Wylie**



Most concrete,
but some older
manholes are
still made of
brick.

10

**No. of Sewer
Lift Stations in
the City of
Wylie**



Each station has
multiple pumps
providing both
capacity and
redundancy.

75

**No. of Grease
Trap
Inspections
performed
FY2021**



Inspections help
maintain
integrity by
preventing
grease build-up.

WATER



2nd Street Waterline Project



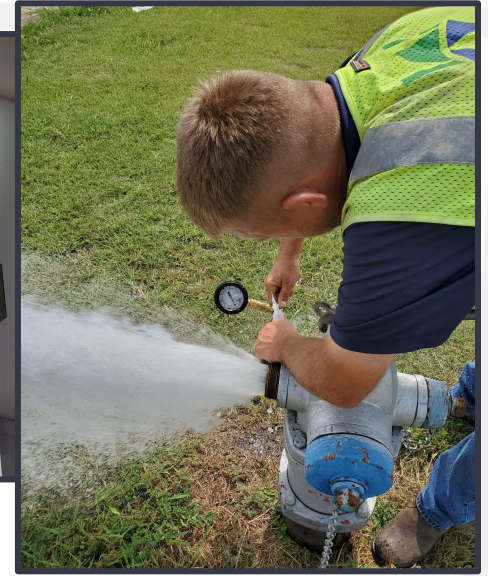
Responsibilities:

- Water main and service repair
- Valve/hydrant maintenance and repair
- Curb stop replacement
- Restoration, incl. sidewalk replacement and sod
- Service turn-on/turn-off
- Assist with monthly meter reads,

WATER QUALITY

Responsibilities:

- BAC-T, NAP, UCMR samples
- Water audit/loss reporting
- Disinfectant Level Quarterly Operating Report (DLQOR)
- Line flushing, flow tests
- Backflow program
- Testing and repairing hydrants, hydrant meter program



- Coordinate tank/tower cleaning and pump/motor inspections
- Manage SCADA system
- Utility line locates
- Customer Service Inspections (CSI)

WASTEWATER



Responsibilities:

- Citywide inflow/infiltration sewer repairs, repair services
- Sewer blockage clears, camera inspections, main line cleaning, grease trap inspections
- Restoration incl. sidewalk/sod
- Station maintenance and repair
- Assisted with monthly meter reads



Thank You!