

# HOODED LEFT TURN LANES AND DECELERATION LANES IMPROVEMENTS

BROWN STREET AND STATE HIGHWAY 78  
WYLIE ECONOMIC DEVELOPMENT CORPORATION

## PAVING IMPROVEMENTS STATE HIGHWAY 78 CITY OF WYLIE, TEXAS

**NOTES:**

ALL CONSTRUCTION WITHIN THE STATE RIGHT OF WAY WILL REQUIRE COMPLIANCE TO TXDOT STANDART SPECIFICATIONS, STANDARD PLANS, AND TEXAS MANUAL ON UNIFORM TRAFFIC CONTROL DEVICES.

SPECIFICATIONS ADOPTED BY THE TEXAS DEPARTMENT OF TRANSPORTATION, JUNE 1, 2014, AND SPECIFICATION ITEMS AS FOLLOW SHALL GOVERN ON THIS PROJECT FOR ALL WORK WITHIN THE STATE RIGHT OF WAY.

THE STANDARD SHEETS, SPECIFICALLY IDENTIFIED IN THIS INDEX OF SHEETS, HAVE BEEN SELECTED BY ME OR UNDER MY RESPONSIBLE SUPERVISION AS BEING APPLICABLE TO THIS PROJECT.

BY SEALING AND SIGNING THESE PERMIT PLANS AS A PROFESSIONAL CIVIL ENGINEER LICENSED TO PRACTICE IN THE STATE OF TEXAS, I CERTIFY THAT THE PROPOSED DRIVEWAY OR PUBLIC STREET CONNECTION(S) TO THE STATE ROADWAY MEETS OR EXCEEDS THE MINIMUM STOPPING SIGHT DISTANCE REQUIRED FOR A POSTED SPEED OF 50 MPH, BASED ON THE MOST RECENT TXDOT DESIGN MANUAL REQUIREMENTS.

REVEGETATION OF THE ROW MUST BE ESTABLISHED TO 70% BEFORE FINAL INSPECTION

TXDOT STANDARDS, DETAILS, SPECIFICATIONS AND PRACTICES SHALL GOVERN ALL WORK PERFORMED IN TXDOT R.O.W.

LANE CLOSURES ALLOWED MON.-FRI., 9:00 AM TO 3:30 PM ONLY

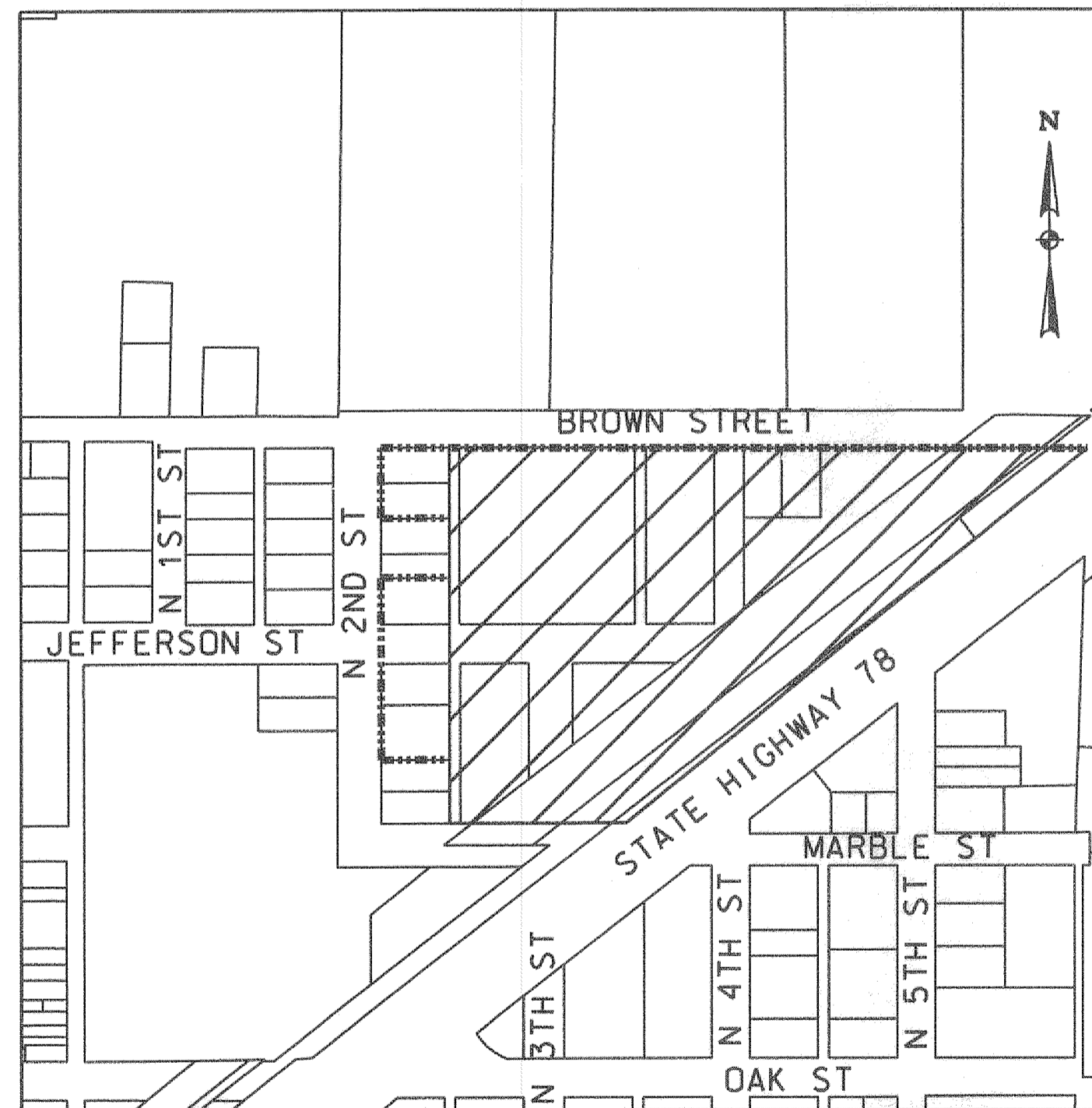
DRIVE AND UTILITY CONSTRUCTION IMPROVEMENTS TO BE CONSTRUCTED PER APPROVED PERMIT # 2022

ALL WORK IN THE STATE ROW MUST BE TO TXDOT STANDARDS

CITY DETAILS ARE NOT APPLICABLE IN TXDOT ROW

OWNER:  
WYLIE ECONOMIC DEVELOPMENT CORPORATION  
250 S. HIGHWAY 78  
WYLIE, TEXAS 75098  
JASON GREINER  
(972) 442-7901

ENGINEER:  
HELMBERGER ASSOCIATES, INC.  
1525 BOZMAN ROAD  
WYLIE, TEXAS 75098  
RANDALL T. HELMBERGER, PE  
(972) 442-7459 TBPE REGISTRATION NO. - F000756



Vicinity Map  
(not to scale)

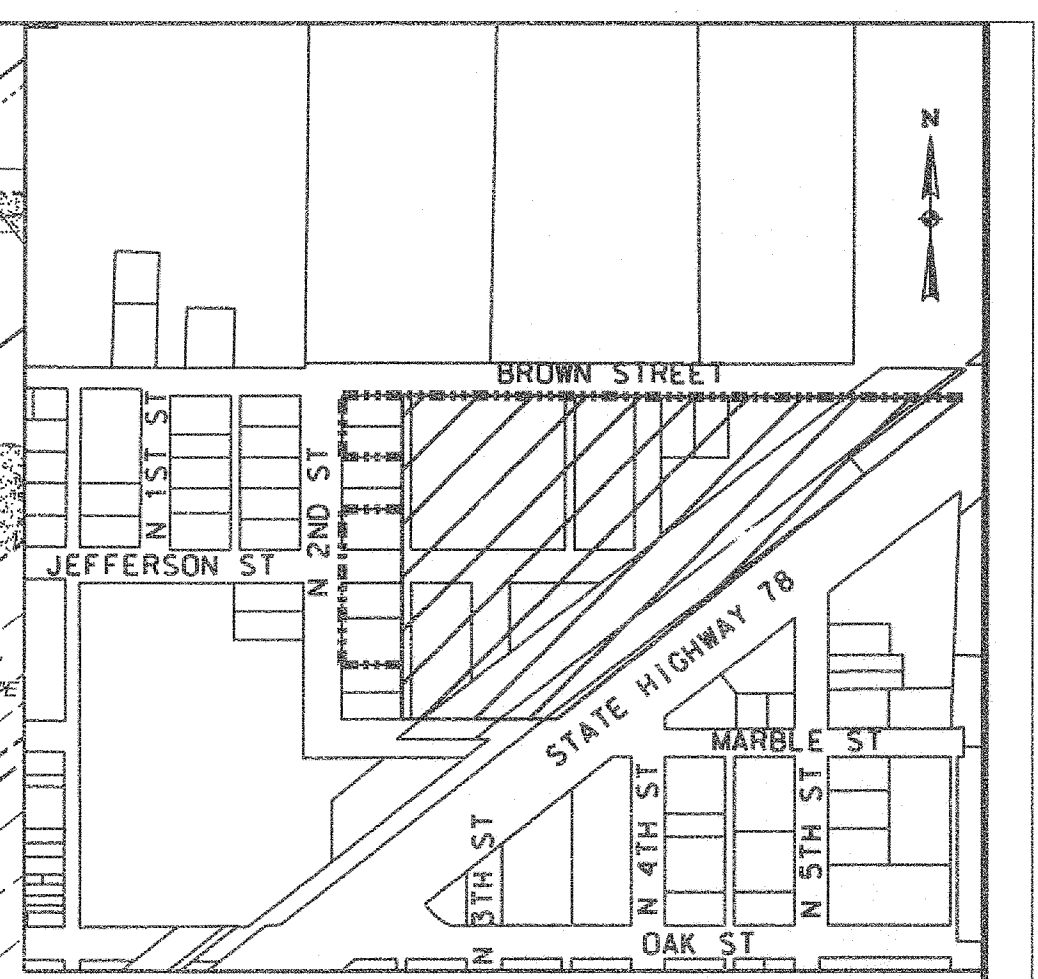
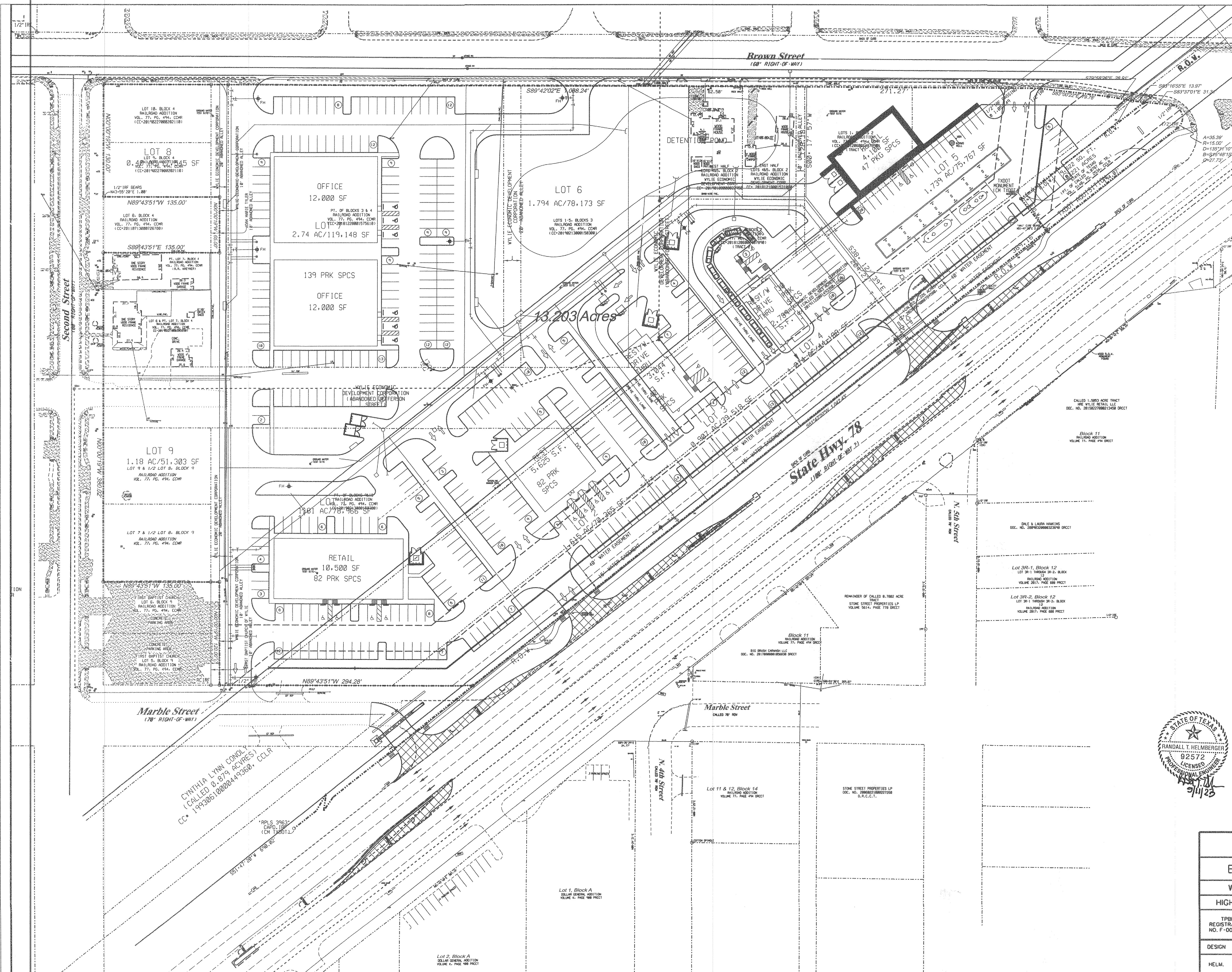
ALL PAVEMENT MARKINGS, ARROWS,  
STRIPES, ETC... TO FOLLOW TXDOT  
PAVEMENT MARKING DETAILS



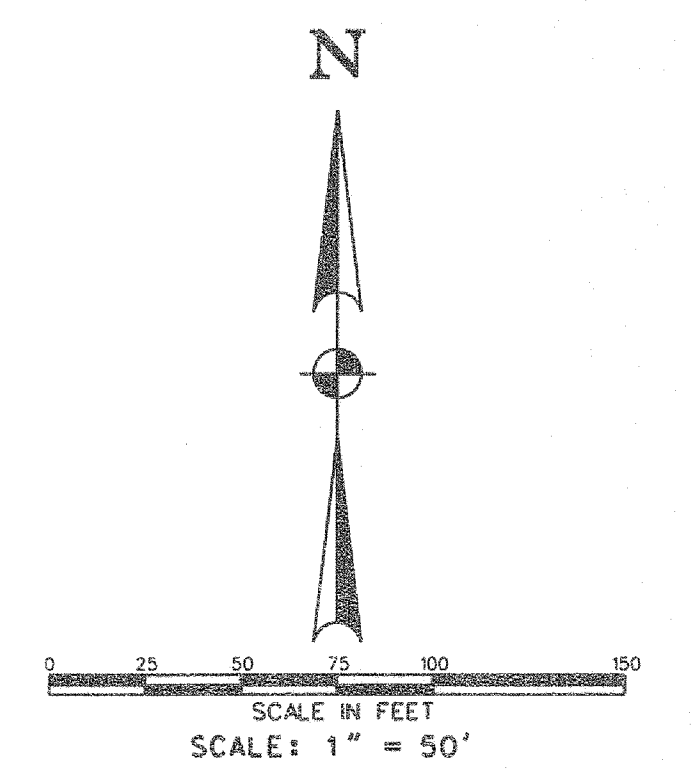
### SHEET INDEX

COVER	
CONCEPT PLAN	C1
DECELERATION LANE *1	C2
DECELERATION LANE *1 GRADING	C2A
DECELERATION LANES *2 &*3	C3
DECELERATION LANES *2 &*3 GRADING	C3A
HOODED TURN LANES	C4
HOODED TURN LANES	C5
EROSION CONTROL PLAN	C6
PAVEMENT MARKING SHEET	PM1
TXDOT DRAINAGE AREA MAP (AS-BUILT)	68
TXDOT RUNOFF COMPUTATIONS (AS-BUILT)	73
TXDOT INLET COMPUTATIONS (AS-BUILT)	75
TXDOT STORM SEWER COMPUTATIONS (AS-BUILT)	76
TRAFFIC CONTROL PLAN	TCP(1-1)-18*
TRAFFIC CONTROL PLAN	TCP(1-5)-18*
PEDESTRIAN FACILITIES CURB RAMPS	PED-18 10F4*
PEDESTRIAN FACILITIES CURB RAMPS	PED-18 20F4*
PEDESTRIAN FACILITIES CURB RAMPS	PED-18 30F4*
PEDESTRIAN FACILITIES CURB RAMPS	PED-18 40F4*
TYPICAL STANDARD PAVEMENT MARKINGS	PM(1) - 22*
POSITION GUIDANCE USING RAISED MARKERS	PM(2) - 22*
TWO WAY TURN LANE PAVEMENT MARKINGS	PM(3) - 22*
TYPICAL SIGN REQUIREMENTS	TSR(4)-13*
TYPICAL SIGN REQUIREMENTS	TSR(5)-13*
CONCRETE CURB AND CURB AND GUTTER	CCCG-22*
CONTINUOUSLY REINFORCED CONCRETE PAVEMENT 1	CRCP(1)-23*
CONTINUOUSLY REINFORCED CONCRETE PAVEMENT 2	CRCP(1)-23*
CONCRETE PAVING DETAILS - JOINT SEALS	JS-14*
CONCRETE PAVEMENT DETAILS 1	CPCD-14*
CONCRETE PAVEMENT DETAILS 2	CPCD-14*
BARRICADE AND CONSTRUCTION GENERAL NOTES	BC(1)-21*

BROWN STREET AND STATE HIGHWAY 78  
TURN AND DECELERATION LANES



Vicinity Map  
(not to scale)



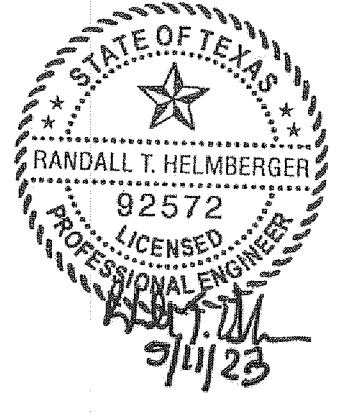
BENCHMARK:  
CITY OF WYLIE CONTROL MONUMENT #1  
LOCATED AT NORTH SIDE OF SH 78 NEAR  
THE EAST ENTRANCE DRIVE FOR CITY OF  
WYLIE POLICE COMPLEX - 2000 SH 78 N  
MAPSCO PAGE 664S  
ELEVATION = 530.294

CITY OF WYLIE CONTROL MONUMENT #2  
LOCATED AT THE OLD CITY PARK  
104 SOUTH OF THE BUILDING AT  
104 SOUTH BALLARD  
MAPSCO PAGE 663Y  
ELEVATION = 550.238

- LINE LEGEND:**
- PROPERTY LINE
  - DRAINAGE FLOW
  - PROPOSED WATER LINE
  - ROAD CENTER LINE
  - PROPOSED STORM SEWER
  - PROPOSED STREET
  - 610- EXISTING CONTOUR LINE
  - 610- PROPOSED CONTOUR LINE
  - BUILDING SETBACK LINE
  - DRAINAGE EASEMENT
  - DRAINAGE DIVIDE LINE
  - ROW / LOT LINE

**OWNER/DEVELOPER:**  
WYLIE ECONOMIC DEVELOPMENT CORPORATION  
250 S. HIGHWAY 78  
WYLIE, TEXAS 75098  
JASON GREINER  
(972) 442-7901

**ENGINEER:**  
HELMBERGER ASSOCIATES, INC.  
1525 BOZMAN ROAD  
WYLIE, TEXAS 75098  
RANDALL T. HELMBERGER, PE  
(972) 442-7459



CONCEPT PLAN						
BROWN AND 78 RETAIL ADDITION						
WYLIE ECONOMIC DEVELOPMENT CORPORATION						
HIGHWAY 78 AND BROWN STREET, WYLIE, TEXAS						
TPBE REGISTRATION NO. F-000756	<b>H</b> HELMBERGER ASSOCIATES, INC.		CIVIL AND ENVIRONMENTAL ENGINEERS			
DESIGN		DRAWN	DATE	SCALE	NOTES	FILE
HELM.		CADD	SEPTEMBER 2020	1"=50'	SPLAN	2020-13
						NO.
						C1