

## GENERAL NOTES

1. ALL NEW PAINT WORK MUST INCLUDE A 2 YEAR FULL WARRANTY AND A YEAR PRO-RATED LABOR AND MATERIALS WARRANTY.
2. ALL PAINT COLOR SELECTIONS TO BE VERIFIED WITH OWNER'S CONSTRUCTION MANAGER BEFORE ORDERING.
3. TOP OF PARAPET TO BE CLAD WITH UNGLAZED COPING. FINAL SELECTION TO BE VERIFIED WITH OWNER'S CONSTRUCTION MANAGER.
4. ALL PREFABRICATED CANOPY SYSTEMS TO BE FIELD VERIFIED BEFORE FABRICATION.
5. ALL WALL MOUNTED EQUIPMENT SUCH AS ELECTRICAL METERS, IRRIGATION METERS, PHONE/CABLE BOXES, EXTERNAL VENTS AND LOUVERS, ETC., SHALL BE PAINTED TO MATCH THE WALL ON WHICH IT IS MOUNTED OR OTHERWISE CONSISTENT WITH THE COLOR(S) OF THE BUILDING.

## CONSTRUCTION NOTES

1. PIPE BOLLARD - SEE SITE PLAN.
2. HARD COAT STUCCO WITH MEDIUM SAND FINISH - SEE WALL SECTIONS.
3. HARD COAT STUCCO CONTROL JOINT.
4. OUTLINE OF MECHANICAL EQUIPMENT BEYOND.
5. APPROXIMATE LINE OF ROOF SURFACE BEYOND.
6. SLOPED ROOF SURFACE.
7. CLEAR ANODIZED ALUMINUM BREAK METAL BETWEEN STOREFRONT WINDOWS.
8. CONTINUOUS METAL ROOF EDGE OR DRIP FLASHING - SEE WALL SECTIONS.
9. CONTINUOUS METAL EDGE FLASHING.
10. CONTINUOUS METAL DRIPS FLASHING - SEE DETAIL 2/A501.
11. PRE-FABRICATED HANGER ROD CANOPY SYSTEM SUPPLIED BY SIGN VENDOR, INSTALLED BY GENERAL CONTRACTOR - SEE WALL SECTIONS.
12. KNOX BOX MOUNTED AT 4'-6" A.F.F.
13. ELECTRICAL METER SERVICE - SEE ELECTRICAL DRAWINGS.
14. GAS METER/SERVICE - SEE PLUMBING DRAWINGS.
15. PREMANUFACTURED AND PRIMED COOLER/FREEZER STORAGE - BY MANUFACTURER. PAINT TO MATCH STUCCO.
16. SIGNAGE FEATURE BY OWNER'S VENDOR. GENERAL CONTRACTOR TO COORDINATE INSTALLATION WITH STRUCTURE AND ELECTRICAL. COLOR: RED.
17. CONCRETE SIDEWALK/CURB - SEE SITE PLAN.
18. APPROXIMATE GRADE/PAVEMENT.
19. STOREFRONT DOOR/WINDOW SYSTEM - SEE FLOOR PLAN FOR MORE INFORMATION.
20. DRIVE-THRU WINDOW SYSTEM - SEE FLOOR PLAN FOR MORE INFORMATION.
21. HOLLOW METAL DOOR AND FRAME - SEE DOOR SCHEDULE.
22. GREASE COLLECTION UNIT - SEE EQUIPMENT PLAN.
23. PEDESTRIAN GUARD RAIL - SEE CIVIL DRAWINGS.
24. INSULATED METAL DOOR AND HOLLOW METAL FRAME PAINT TO MATCH STUCCO - SEE DOOR SCHEDULE.
25. SIGNAGE FEATURE BY OWNER'S VENDOR. GENERAL CONTRACTOR TO COORDINATE INSTALLATION WITH STRUCTURE AND ELECTRICAL. COLOR: WHITE.
26. BLOCKING FOR PRE-FABRICATED HANGER ROD CANOPY SYSTEM BY GENERAL CONTRACTOR. COORDINATE WITH SIGN VENDOR & SEE WALL SECTIONS.

## EXTERIOR FINISH SCHEDULE

- 1. PREFINISHED ALUMINUM EDGE FLASHING - COLOR - RED - SW6866 HEARTHROB
- 2. METAL FASCIA/ BRAKE METAL WRAP - MILL FINISH - CLEAR COAT
- 3. PREFINISHED ALUMINUM EDGE OR DRIP FLASHING - COLOR - BLACK - SW6593 BLACK OF NIGHT
- 4. HARD COAT STUCCO - PAREX - STYLE: MEDIUM SAND FINISH - COLOR - GRAY - SW 6002 ESSENTIAL GRAY
- 5. HARD COAT STUCCO - PAREX - STYLE: MEDIUM SAND FINISH - COLOR - BLACK - SW6993 BLACK OF NIGHT
- 6. HARD COAT STUCCO - PAREX - STYLE: MEDIUM SAND FINISH - COLOR - RED - PMS 20-0689 TYP. CNEY APPLE RED
- 7. HARD COAT STUCCO - PAREX - STYLE: MEDIUM SAND FINISH - COLOR - WHITE - SW7005 PURE WHITE
- 8. ALUMINUM STOREFRONT MILL FINISHED - COLOR: CLEAR COAT

\* REFER TO THE MOST CURRENT HWY 55 BRAND BOOK FOR ALL INTERIOR AND EXTERIOR COLORS - VERIFY ALL FINISHES WITH OWNER PRIOR TO PURCHASING

LMIT Project No. 21337

THIS DRAWING IS THE PROPERTY OF INRBD ARCHITECTS & ENGINEERS. IT IS TO BE USED ONLY FOR THE PROJECT AND SITE SPECIFICALLY IDENTIFIED HEREON. IT IS NOT TO BE REPRODUCED, COPIED, OR TRANSMITTED IN ANY FORM OR BY ANY MEANS, ELECTRONIC OR MECHANICAL, WITHOUT THE WRITTEN PERMISSION OF INRBD ARCHITECTS & ENGINEERS.

**INRBD**  
ARCHITECTS & ENGINEERS  
10000 Katy Freeway, Suite 200  
Houston, Texas 77054  
P: 281.444.7222  
F: 281.444.7223  
A Division of LMIT Associates

PRELIMINARY NOT FOR  
CONSTRUCTION

PROJECT: **HIGHWAY 55**  
3D PROTOTYPE  
2014 NORTH HWY 55  
WYLE, TEXAS 75086  
DRAWING: EXTERIOR ELEVATIONS

## Revisions

THRU ADDENDUM "A"  
REVISION DATE

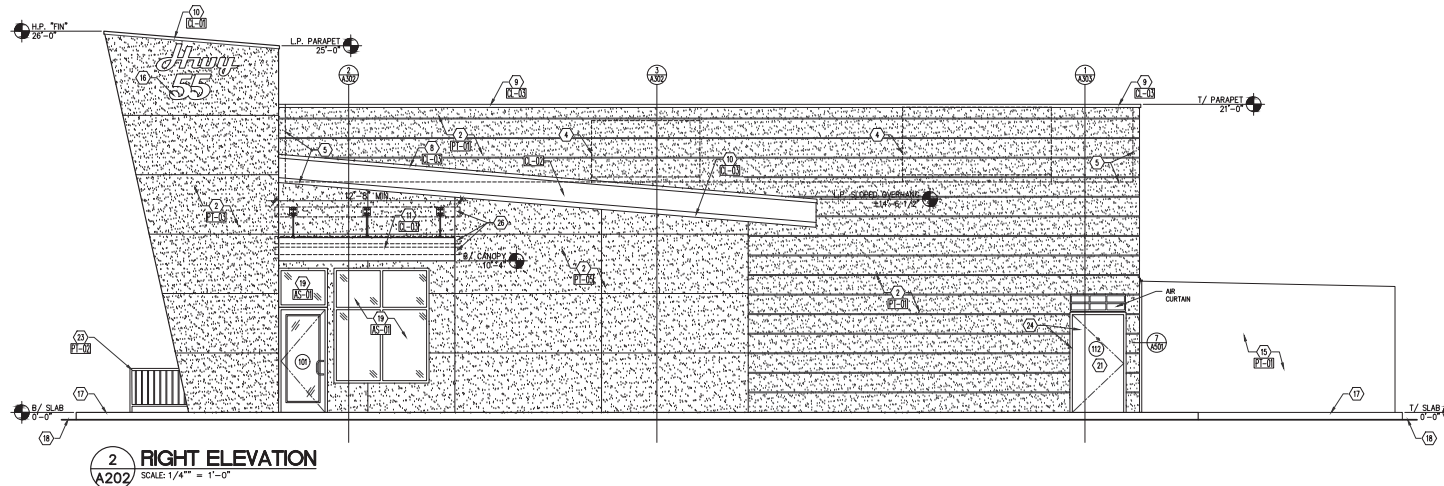
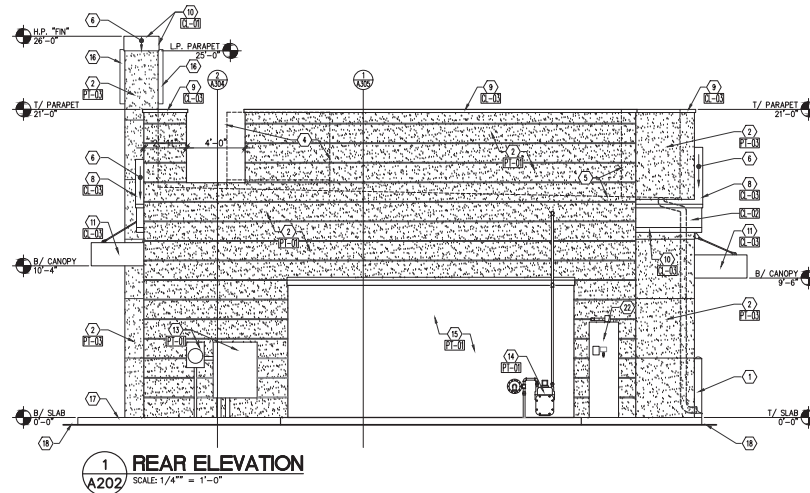
PROJECT DATE  
03/15/2022

Drawn By  
CH

Checked By  
GRL

Sheet No.

**A201**



## GENERAL NOTES

1. ALL NEW PAINT WORK MUST INCLUDE A 2 YEAR FULL WARRANTY AND A YEAR PRO-RATED LABOR AND MATERIALS WARRANTY.
2. ALL PAINT COLOR SELECTIONS TO BE VERIFIED WITH OWNER'S CONSTRUCTION MANAGER BEFORE ORDERING.
3. TOP OF PARAPET TO BE CLAD WITH UNCLAD COPING. FINAL SELECTION TO BE VERIFIED WITH OWNER'S CONSTRUCTION MANAGER.
4. ALL PREFABRICATED CANOPY SYSTEMS TO BE FIELD VERIFIED BEFORE FABRICATION.
5. ALL WALL MOUNTED EQUIPMENT SUCH AS ELECTRICAL METERS, IRRIGATION METERS, PHONE/CABLE BOXES, EXTERNAL VENTS AND LOUVERS, ETC., SHALL BE PAINTED TO MATCH THE WALL ON WHICH IT IS MOUNTED OR OTHERWISE CONSISTENT WITH THE COLOR(S) OF THE BUILDING.

## CONSTRUCTION NOTES

1. PIPE BOLLARD - SEE SITE PLAN.
2. HARD COAT STUCCO WITH MEDIUM SAND FINISH - SEE WALL SECTIONS.
3. HARD COAT STUCCO CONTROL JOINT.
4. OUTLINE OF MECHANICAL EQUIPMENT BEYOND.
5. APPROXIMATE LINE OF ROOF SURFACE BEYOND.
6. SLOPED ROOF SURFACE.
7. CLEAR ANODIZED ALUMINUM BREAK METAL BETWEEN STOREFRONT WINDOWS.
8. CONTINUOUS METAL ROOF EDGE OR DRIP FLASHING - SEE WALL SECTIONS.
9. CONTINUOUS METAL EDGE FLASHING.
10. CONTINUOUS METAL DRIPS FLASHING - SEE DETAIL 2/A501.
11. PRE-FABRICATED HANGER ROD CANOPY SYSTEM SUPPLIED BY SIGN VENDOR, INSTALLED BY GENERAL CONTRACTOR - SEE WALL SECTIONS.
12. KNOX BOX MOUNTED AT 4'-6" A.F.F.
13. ELECTRICAL METER SERVICE - SEE ELECTRICAL DRAWINGS.
14. GAS METER/SERVICE - SEE PLUMBING DRAWINGS.
15. PREMANUFACTURED AND PRIMED COOLER/FREEZER/STORAGE - BY MANUFACTURER. PAINT TO MATCH STUCCO.
16. SIGNAGE FEATURE BY OWNER'S VENDOR. GENERAL CONTRACTOR TO COORDINATE INSTALLATION WITH STRUCTURE AND ELECTRICAL. COLOR: RED.
17. CONCRETE SIDEWALK/CURB - SEE SITE PLAN.
18. APPROXIMATE GRADE/PAVEMENT.
19. STOREFRONT DOOR/WINDOW SYSTEM - SEE FLOOR PLAN FOR MORE INFORMATION.
20. DRIVE-THRU WINDOW SYSTEM - SEE FLOOR PLAN FOR MORE INFORMATION.
21. HOLLOW METAL DOOR AND FRAME - SEE DOOR SCHEDULE.
22. GREASE COLLECTION UNIT - SEE EQUIPMENT PLAN.
23. PEDESTRIAN GUARD RAIL - SEE CIVIL DRAWINGS.
24. INSULATED METAL DOOR AND HOLLOW METAL FRAME PAINT TO MATCH STUCCO - SEE DOOR SCHEDULE.
25. SIGNAGE FEATURE BY OWNER'S VENDOR. GENERAL CONTRACTOR TO COORDINATE INSTALLATION WITH STRUCTURE AND ELECTRICAL. COLOR: WHITE.
26. BLOCKING FOR PRE-FABRICATED HANGER ROD CANOPY SYSTEM BY GENERAL CONTRACTOR - COORDINATE WITH SIGN VENDOR & SEE WALL SECTIONS.

## EXTERIOR FINISH SCHEDULE

1. PREFINISHED ALUMINUM EDGE FLASHING - COLOR - RED - SW6866 HEARTHROB
2. METAL FASCOA/ BRAVE METAL WRAP - MILL FINISH - CLEAR COAT
3. PREFINISHED ALUMINUM EDGE OR DRIP FLASHING - COLOR - BLACK - SW6993 BLACK OF NIGHT
4. HARD COAT STUCCO - PAREX - STYLE: MEDIUM SAND FINISH - COLOR - GRAY - SW 6002 ESSENTIAL GRAY
5. HARD COAT STUCCO - PAREX - STYLE: MEDIUM SAND FINISH - COLOR - BLACK - SW6993 BLACK OF NIGHT
6. HARD COAT STUCCO - PAREX - STYLE: MEDIUM SAND FINISH - COLOR - RED - PMS 20-069 TYP ONEY APPLE RED
7. HARD COAT STUCCO - PAREX - STYLE: MEDIUM SAND FINISH - COLOR - WHITE - SW7005 PURE WHITE
8. ALUMINUM STOREFRONT METAL FINISHED - COLOR: CLEAR COAT

- \* REFER TO THE MOST CURRENT HWY 55 BRAND BOOK FOR ALL INTERIOR AND EXTERIOR COLORS - VERIFY ALL FINISHES WITH OWNER PRIOR TO PURCHASING

LMIT Project No. 21337

THIS DRAWING IS THE PROPERTY OF INRBD ARCHITECTS & ENGINEERS. IT IS TO BE USED ONLY FOR THE PROJECT AND SITE SPECIFICALLY IDENTIFIED HEREON. IT IS NOT TO BE REPRODUCED, COPIED, OR TRANSMITTED IN ANY FORM OR BY ANY MEANS, WITHOUT THE WRITTEN PERMISSION OF INRBD ARCHITECTS & ENGINEERS.

**INRBD**  
ARCHITECTS & ENGINEERS  
1001 W. 14th St., Suite 100  
Fort Worth, TX 76102  
(817) 334-7222  
A Division of LMIT Associates

PRELIMINARY NOT FOR  
CONSTRUCTION

PROJECT: **HIGHWAY 55**  
30 PROTOTYPE  
2014 NORTH HWY78  
WYLE, TEXAS 75086  
DRAWING: EXTERIOR ELEVATIONS

## Revisions

THRU ADDENDUM "A"  
REVISION DATE

PROJECT DATE  
03/15/2022

Drawn By  
CH

Checked By  
GRL

Sheet No.



**A202**



PERSPECTIVE VIEW 1



PERSPECTIVE VIEW 2

		OPTION B			EXTERIOR FACADE ::
		10.8.21	PERSPECTIVE VIEWS		EXTERIOR CONCEPT ::



FRONT ELEVATION





RIGHT ELEVATION



LEFT ELEVATION



BACK ELEVATION

		OPTION B		EXTERIOR FACADE ::
		10.8.21	FLAT ELEVATIONS	EXTERIOR CONCEPT ::