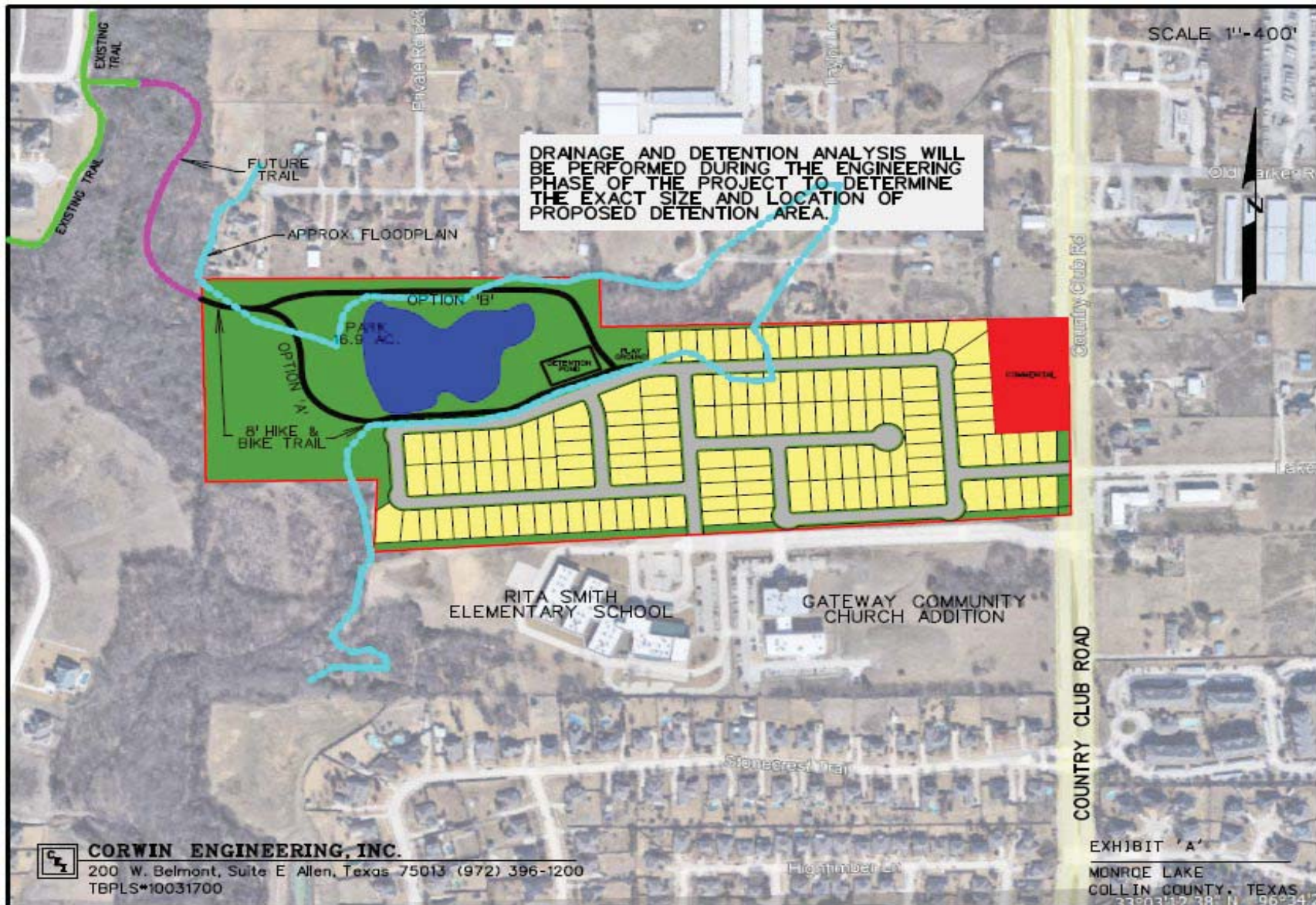


**PUBLIC PARK IMPROVEMENTS
EXHIBIT "E"
MONROE FARMS**



MONROE PARK & TRAIL COST PROJECTION									
Date: 12-8-21									
DESCRIPTION		Quantity	UNIT	PRICE	TOTAL COST				
6" Concrete Hike and Bike Trail 8' Wide		14,000	SQ. FT.	\$ 6.50	\$	91,000			
6" Concrete Hike and Bike Trail 8' Wide Connection		1,400	SQ. FT.	\$ 6.50	\$	9,100			
6" Concrete Pads for Benches and Tables along Trail		500	SQ. FT.	\$ 6.50	\$	3,250			
Handicap Ramps		1	EA.	\$ 2,000.00	\$	2,000			
Low Water Crossings		1	EA.	\$ 15,000.00	\$	15,000			
Lake Draining and Dam Breach		1	EA.	\$ 40,000.00	\$	40,000			
Play Ground		1	EA.	\$ 85,000.00	\$	85,000			
Playground Structure and Swing Set (Mulch Base)		1	EA.	\$ 30,000.00	\$	30,000			
Hardscape (Sidewalks, Pads, and Play Ground Border)		1	EA.	\$ 12,500.00	\$	12,500			
Park & Trail Improvements		2	EA.	\$ 2,000.00	\$	4,000			
Picnic Table		4	EA.	\$ 1,250.00	\$	5,000			
Park Trail Bench		4	EA.	\$ 1,250.00	\$	5,000			
Trash Receptacle		2	EA.	\$ 1,500.00	\$	3,000			
Park Trail Milage Markers		2	EA.	\$ 1,000.00	\$	2,000			
6" Posts		2	EA.	\$ 500.00	\$	1,000			
ID Placards		2	EA.	\$ 1,500.00	\$	3,000			
General Site Prep and Grading		1	LS.	\$ 20,000.00	\$	20,000			
Seeded Areas		4.0	AC.	\$ 3,500.00	\$	14,000			
Bermuda Hydromulch for 8' Trail Buffer and Playground Area									
Irrigation		1	LS.	\$ 60,000.00	\$	60,000			
Irrigation Design and Install for Seeding		1	LS.	\$ 1,500.00	\$	1,500			
Irrigation Stamped Plan for Permit									
TOTAL					\$	401,850			

PARK FEE CALCULATION

Date: 12-8-2021

	No. of Lots	Park Fee	Total
Park Fee Based on Proposed Lot Count	146	\$ 2,000.00	\$ 292,000
Cost of Park Improvements (Trail and Playground)		\$	401,850
Total Park Improvements in Excess of Required Park Fees		\$	(109,850)
Park Fee Cash Contribution to City		\$	-
Park Land Dedication	2.8	Acres	
Park Land Dedication in Flood Plain	14.1	Acres	
Total Park Land Dedication	16.9	Acres	
Total Park Land Dedication	16.9	Acres	
City Required Park Dedication	7.1	Acres	
Total Park Land Dedication in Excess of Requirement	9.8	Acres	

Note:

Developer to install park and trail improvements

City to be responsible for water and maintenance upon completion of the improvements.