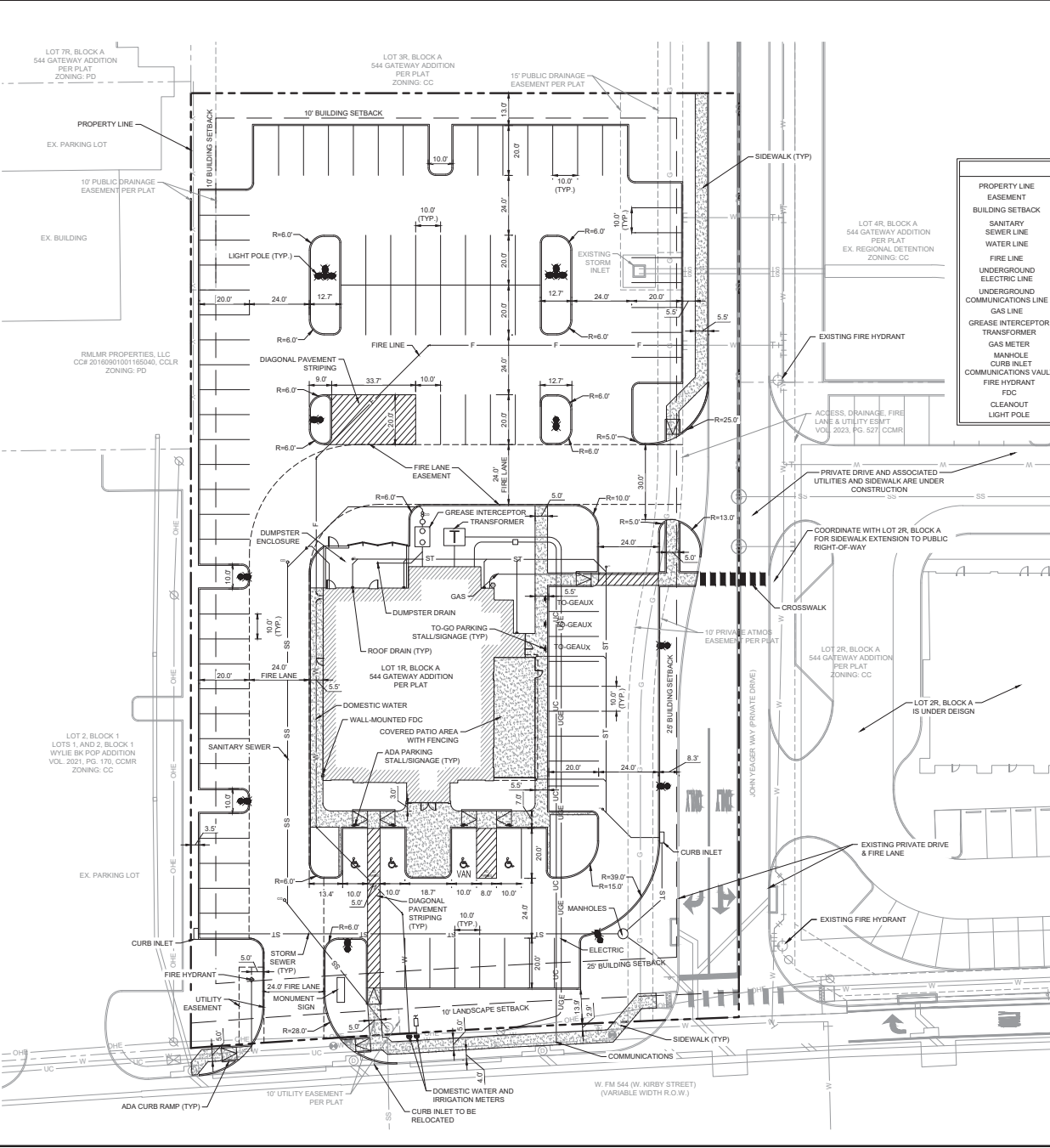
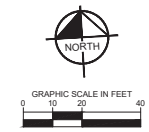
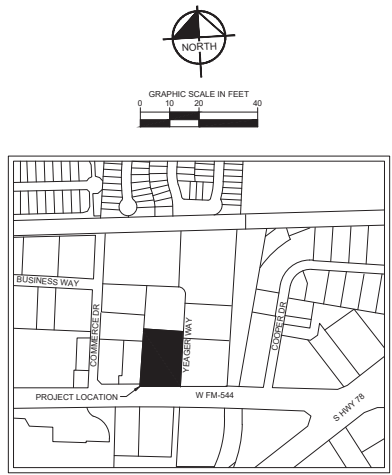


This document is prepared for the project and site shown. It is not to be used for any other project or site without the written authorization and signature of the engineer of record. The engineer of record is responsible for the accuracy of the information shown. The engineer of record is not responsible for the accuracy of the information shown. The engineer of record is not responsible for the accuracy of the information shown.



LEGEND	
PROPERTY LINE	---
EASEMENT	- - - - -
BUILDING SETBACK	----
SANITARY SEWER LINE	SS
WATER LINE	W
FIRE LINE	F
UNDERGROUND ELECTRIC LINE	UGE
UNDERGROUND COMMUNICATIONS LINE	UC
GAS LINE	G
GREASE INTERCEPTOR TRANSFORMER	☐
GAS METER	⊙
MANHOLE	⊙
CURB INLET	⊙
COMMUNICATIONS VAULT	⊙
FIRE HYDRANT	⊙
FDC	⊙
CLEANOUT	⊙
LIGHT POLE	⊙



SITE DATA

DESCRIPTION:	LOT 1R, BLOCK A, 544 GATEWAY ADDITION
EXISTING ZONING:	CC
PROPOSED USE:	RESTAURANT
LOT AREA:	482,722 SF - 1.90 AC
BUILDING AREA:	5,540 SF
BUILDING LOT COVERAGE:	6.70%
BUILDING HEIGHT:	1-STORY; 25 FEET
REQUIRED PARKING:	RESTAURANT: 1:100 (5,540/100) = 56 SPACES
PROVIDED PARKING:	93 SPACES (4 ACCESSIBLE SPACES)
LANDSCAPING LOT COVERAGE:	20.50%

OWNER

WYLIE EDC
 304 FORTUNE ROAD
 YOUNGSVILLE, LA 70592
 PHONE: 469-748-6199
 CONTACT: JASON GREINER
 EMAIL: JASON@WYLIEEDC.COM

TENANT

DEFT VENTURES, LLC
 304 FORTUNE ROAD
 YOUNGSVILLE, LA 70592
 PHONE: 337-278-1755
 CONTACT: COOPER THOMSON
 EMAIL: CTWALKKONS@GMAIL.COM

ARCHITECT

ACS CINCINNATI
 7870 E. KEMPER ROAD, SUITE 320
 CINCINNATI, OH 45249
 PHONE: 513-991-6200 X4507
 CONTACT: WILL HOFMANN
 EMAIL: WHOFMANN@ACS-ARCHITECTS.COM

CIVIL ENGINEER

Kimley-Horn
 4727 GALLARDIA PARKWAY, SUITE 250
 OKLAHOMA CITY, OK 73142
 PHONE: 405-241-5426
 CONTACT: STEVEN COOKSEY
 EMAIL: STEVEN.COOKSEY@KIMLEY-HORN.COM

SURVEYOR

ROOME LAND SURVEYING
 2000 AVENUE G, SUITE 810
 PLANO, TEXAS 75074
 PHONE: 972-423-4372
 CONTACT: F. E. BEMENDERFER JR.

NOTES:
 1. THIS SITE PLAN IS TO BE USED FOR PLANNING PURPOSES ONLY AND IS NOT A CONSTRUCTION DOCUMENT.
 2. SITE PLAN IS PROVIDED TO SHOW GENERAL LOCATION OF IMPROVEMENTS. REFERENCE THE PAVING, GRADING, STORM SEWER, AND UTILITY PLANS FOR DETAILED INFORMATION ON SITE CONSTRUCTION ITEMS.
 3. SURVEY INFORMATION REFLECTED PROVIDED BY WYLIE EDC, PRODUCED BY ROOME LAND SURVEYING.

BENCHMARKS:
 CITY OF WYLIE MONUMENT #1
 LOCATED ON THE NORTH SIDE OF STATE HIGHWAY NO. 78 NEAR THE EAST ENTRANCE DRIVE FOR THE CITY OF WYLIE MUNICIPAL COMPLEX AT 2000 STATE HIGHWAY NO. 78 NORTH NORTHING - 7059922.944, EASTING - 2576974.068, ELEVATION 530.55
 CITY OF WYLIE MONUMENT #2
 LOCATED NORTH OF STATE HIGHWAY NO. 78 AND WEST OF SOUTH BALLARD STREET NEAR THE SOUTHEAST CORNER OF THE BUILDING AT 104 SOUTH BALLARD STREET NORTHING - 7057346.784, EASTING - 2569521.039, ELEVATION 550.61

NO.	REVISIONS	DATE

Kimley-Horn
 © 2025 KIMLEY-HORN AND ASSOCIATES, INC.
 4727 GALLARDIA PARKWAY, SUITE 250, OKLAHOMA CITY, OK 73142
 PHONE: 405-241-5426 FAX: 405-241-5428
 WWW.KIMLEY-HORN.COM

PRELIMINARY
 Kimley-Horn
 PRELIMINARY DESIGN

WALK-ONS SPORTS BISTREAUX
 LOT 1R, BLOCK A,
 544 GATEWAY ADDITION
 906 W FM 544
 WYLIE, TX 75098

SITE PLAN
 SHEET NUMBER
C-006



Front Elevation

Scale: 1/4" = 1'-0"

BRK-1 THIN BRICK
HEBRON BRICK
COLOR: BOURBON SREET

FC-1 FIBER CEMENT SIDING
NICHIIHA
COLOR: VINTAGEWOOD BARK

EIFS-1 EXTERIOR FINISH SYSTEM
STO
COLOR: 16018 FINE SAND

PT-6 PAINT
COLOR: TO MATCH
DARK BRONZE

MTL-1 METAL FINISH
COLOR: RAL 5003

MTL-2 METAL FINISH
COLOR: DARK BRONZE

MTL-3 METAL FINISH
COLOR: ALMOND



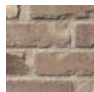
Walk On's Sports Bistreaux
Wylie, TX






Left Elevation

Scale: 1/4" = 1'-0"

 BRK-1 THIN BRICK
HEBRON BRICK
COLOR: BOURBON SSTREET

 FC-1 FIBER CEMENT SIDING
NICHIIHA
COLOR: VINTAGEWOOD BARK

 EIFS-1 EXTERIOR FINISH SYSTEM
STO
COLOR: 16018 FINE SAND

 PT-6 PAINT
COLOR: TO MATCH
DARK BRONZE

 MTL-1 METAL FINISH
COLOR: RAL 5003

 MTL-2 METAL FINISH
COLOR: DARK BRONZE

 MTL-3 METAL FINISH
COLOR: ALMOND



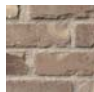
Walk On's Sports Bistreaux
Wylie, TX






Rear Elevation

Scale: 1/4" = 1'-0"

 BRK-1 THIN BRICK
HEBRON BRICK
COLOR: BOURBON SSTREET

 FC-1 FIBER CEMENT SIDING
NICHIIHA
COLOR: VINTAGEWOOD BARK

 EIFS-1 EXTERIOR FINISH SYSTEM
STO
COLOR: 16018 FINE SAND

 PT-6 PAINT
COLOR: TO MATCH
DARK BRONZE

 MTL-1 METAL FINISH
COLOR: RAL 5003

 MTL-2 METAL FINISH
COLOR: DARK BRONZE

 MTL-3 METAL FINISH
COLOR: ALMOND



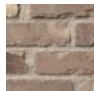
Walk On's Sports Bistreaux
Wylie, TX






Right Elevation

Scale: 1/4" = 1'-0"

 BRK-1 THIN BRICK
HEBRON BRICK
COLOR: BOURBON S STREET

 FC-1 FIBER CEMENT SIDING
NICHIIHA
COLOR: VINTAGEWOOD BARK

 EIFS-1 EXTERIOR FINISH SYSTEM
STO
COLOR: 16018 FINE SAND

 PT-6 PAINT
COLOR: TO MATCH
DARK BRONZE

 MTL-1 METAL FINISH
COLOR: RAL 5003

 MTL-2 METAL FINISH
COLOR: DARK BRONZE

 MTL-3 METAL FINISH
COLOR: ALMOND



Walk On's Sports Bistreaux
Wylie, TX

