

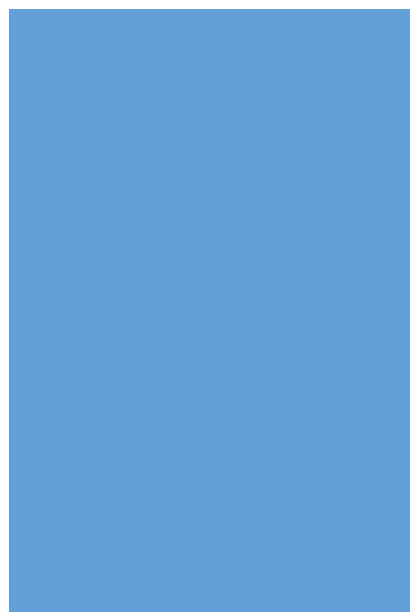


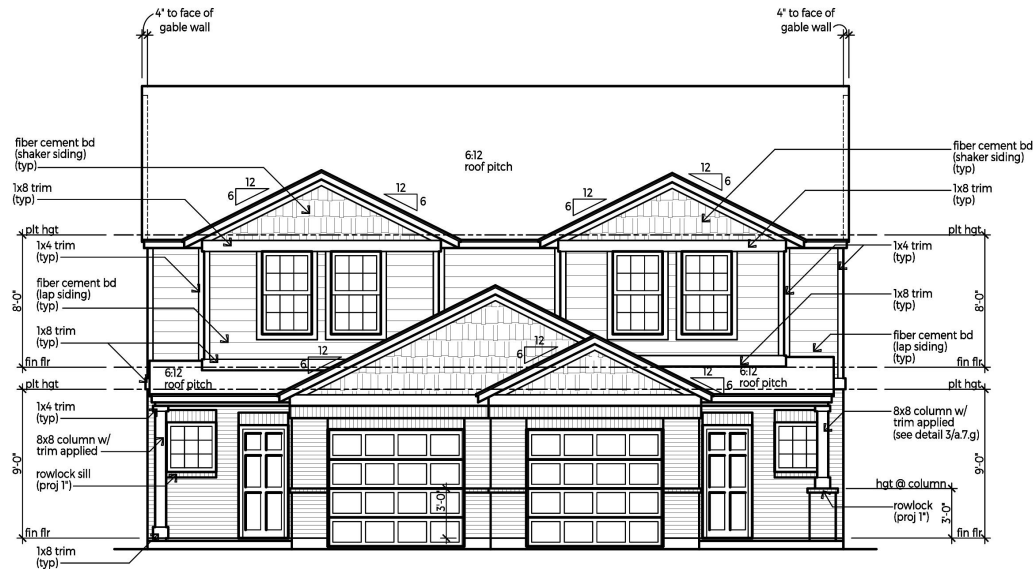
Wylie Lake Park Villas

- Objective – propose building material façade requirements

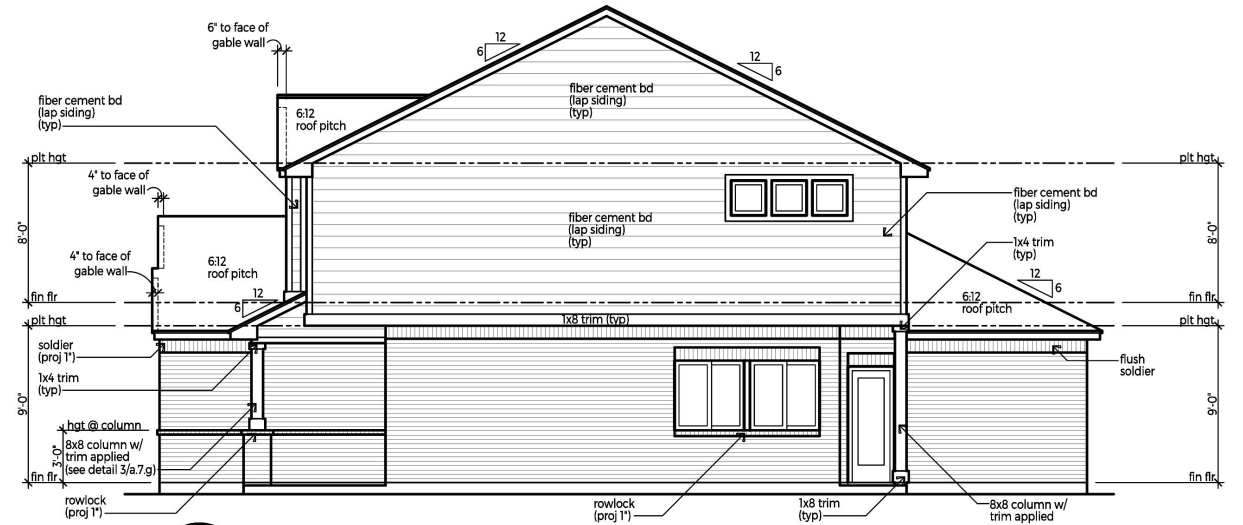
Wylie Lake Park Villas

- All exterior building faces, excluding doors and windows, shall consist of 80% masonry to include brick, stone, stucco or masonry board
- 100% brick or stone on first floor

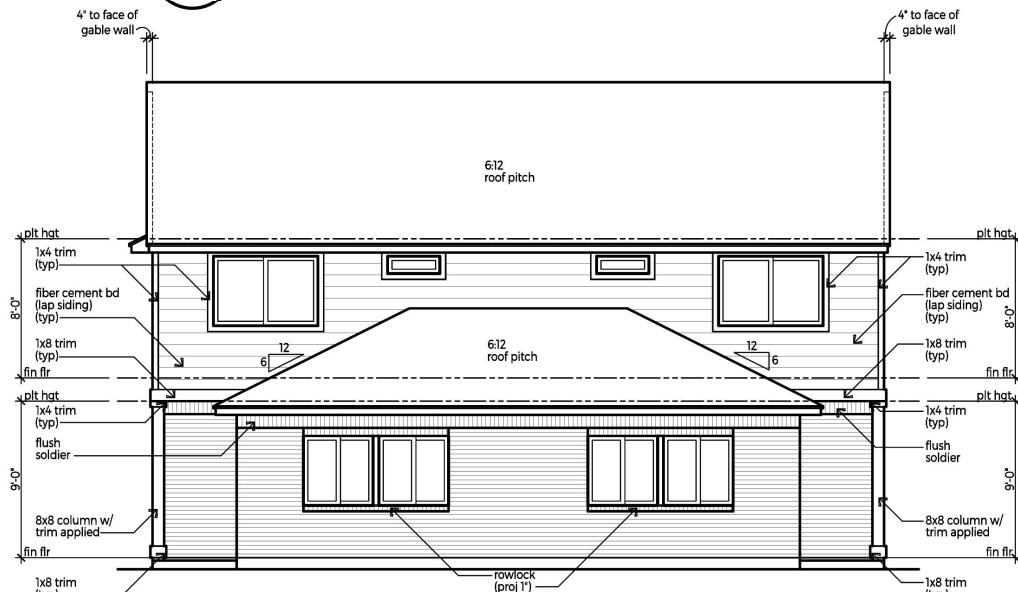




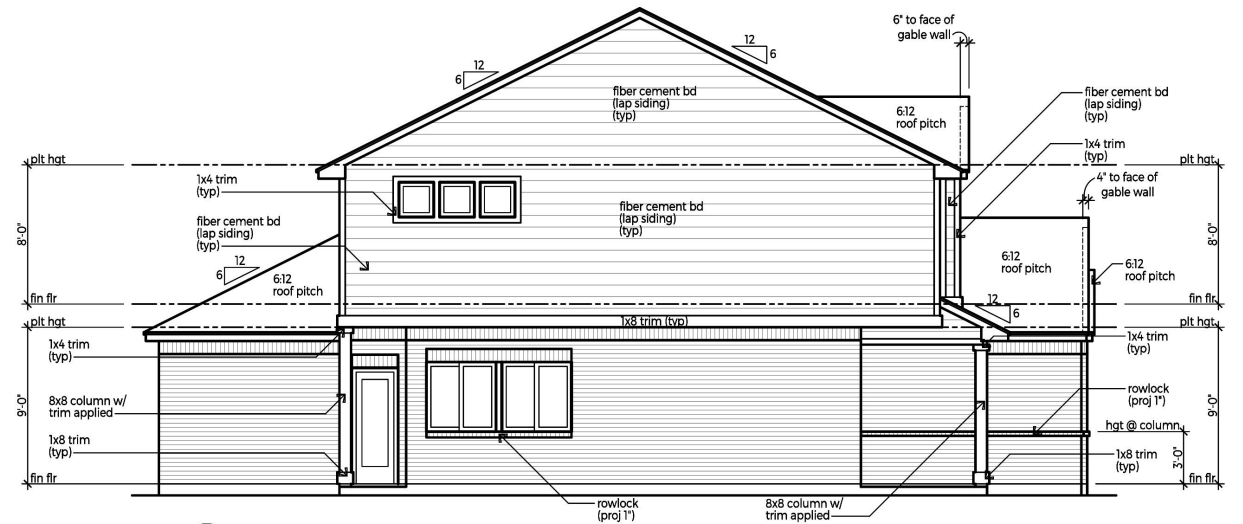
1 front elevation
a.7.g scale 1/8" = 1'-0"



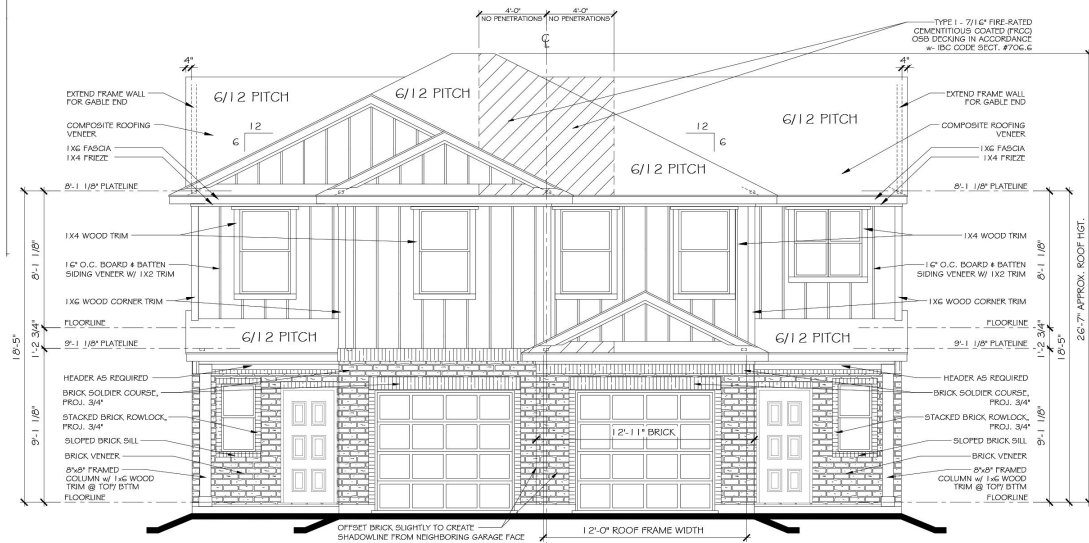
1 right elevation
a.7.h scale 1/8" = 1'-0"



2 rear elevation
a.7.g scale 1/8" = 1'-0"

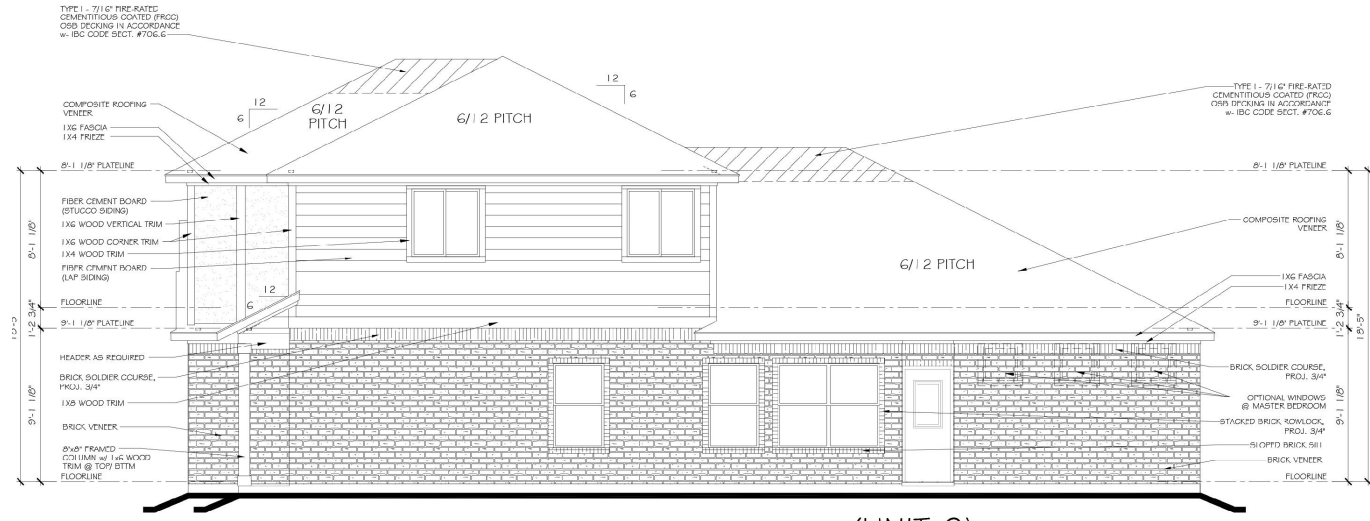


2 left elevation
a.7.h scale 1/8" = 1'-0"



(UNIT 1)
FRONT ELEVATION "B"

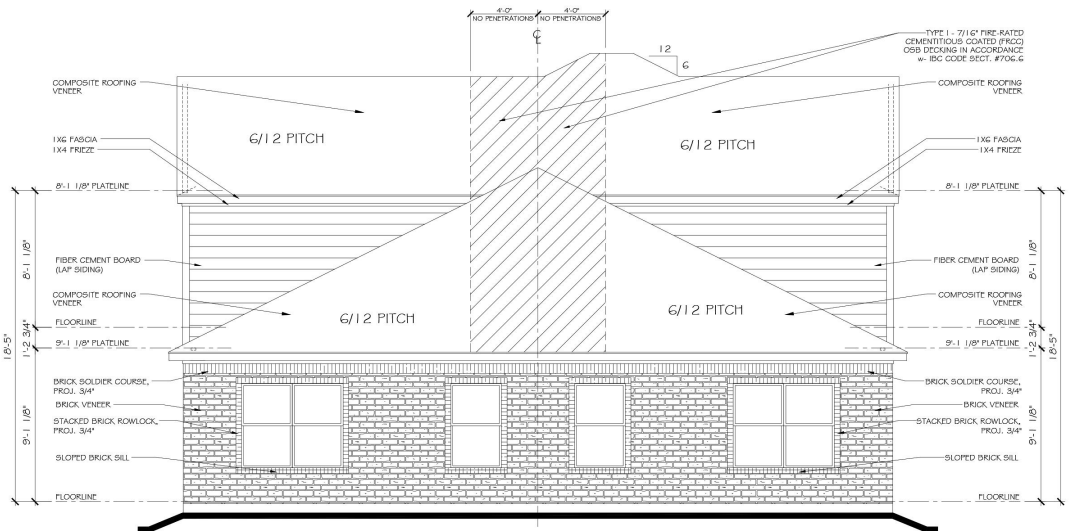
SCALE: 1/4" = 1'-0" (22"x34" SHEET)
1/8" = 1'-0" (11"x17" SHEET)



RIGHT ELEVATION

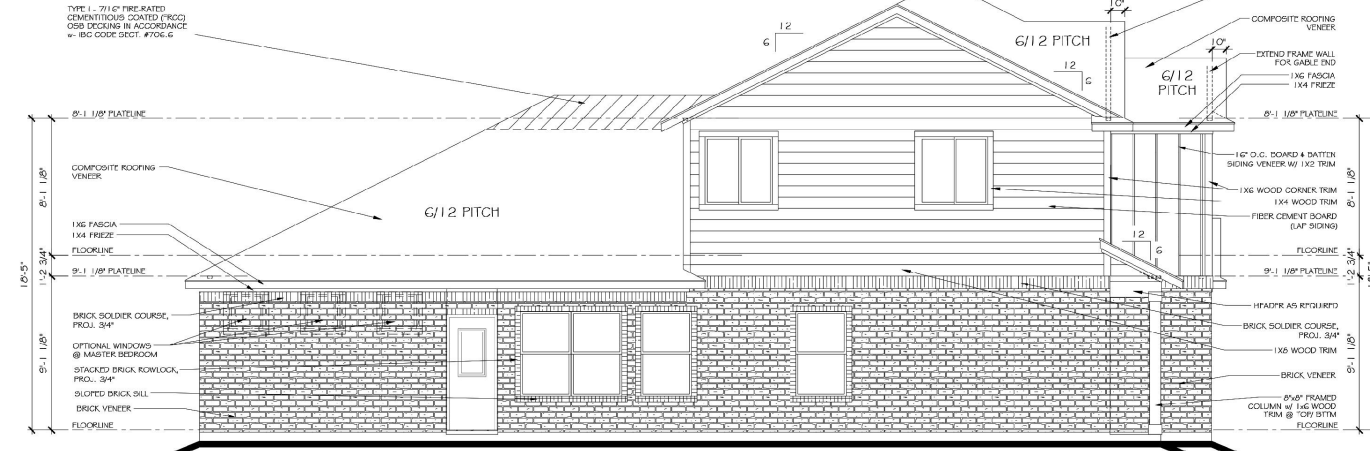
SCALE: 1/4" = 1'-0" (22"x34" SHEET)
1/8" = 1'-0" (11"x17" SHEET)

(UNIT 2)



(UNIT 2) (UNIT 1)
REAR ELEVATION "B"

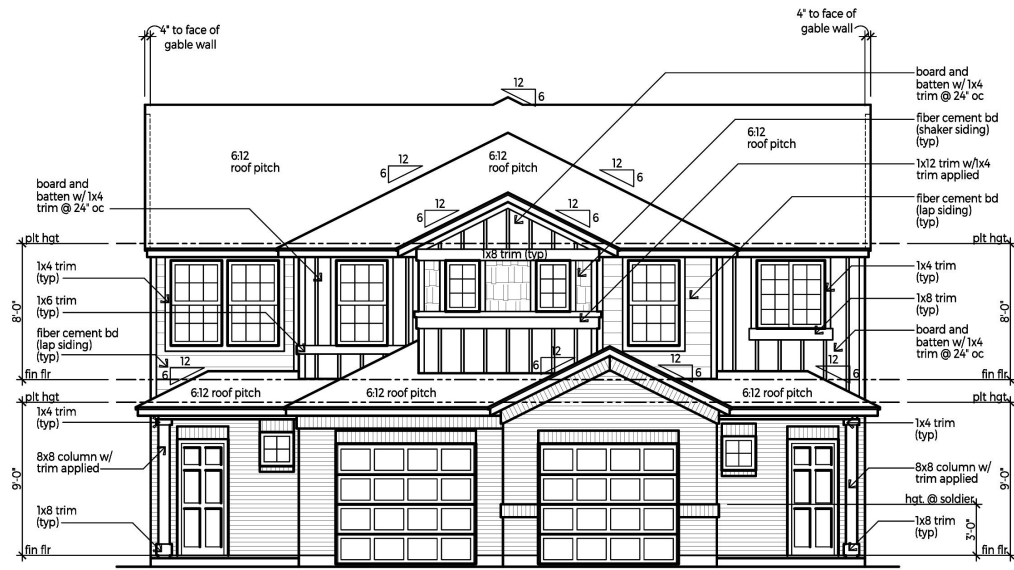
SCALE: 1/4" = 1'-0" (22"x34" SHEET)
1/8" = 1'-0" (11"x17" SHEET)



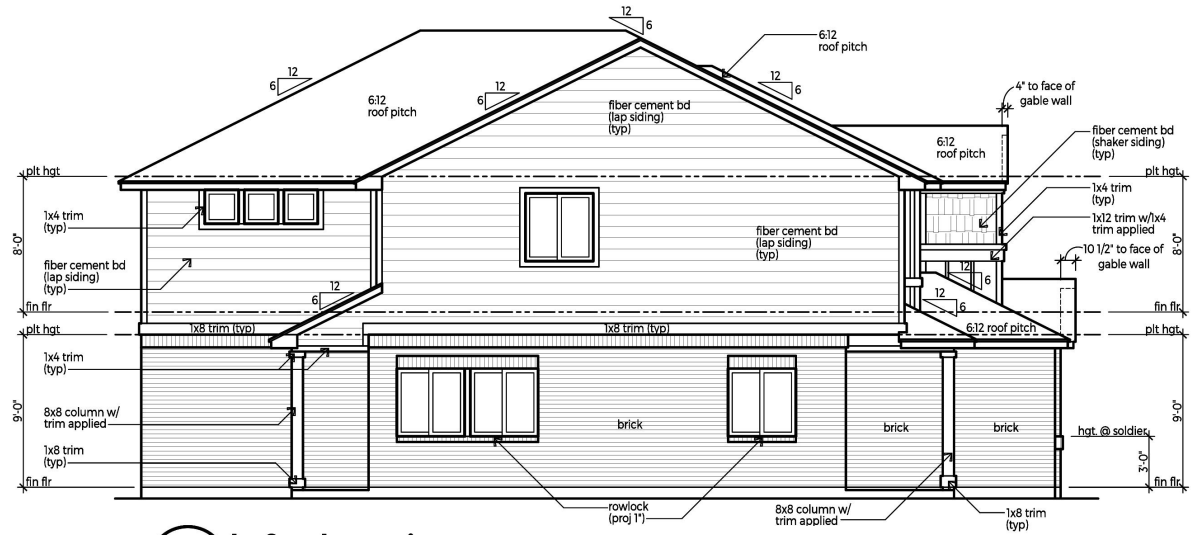
LEFT ELEVATION "B"

SCALE: 1/4" = 1'-0" (22"x34" SHEET)
1/8" = 1'-0" (11"x17" SHEET)

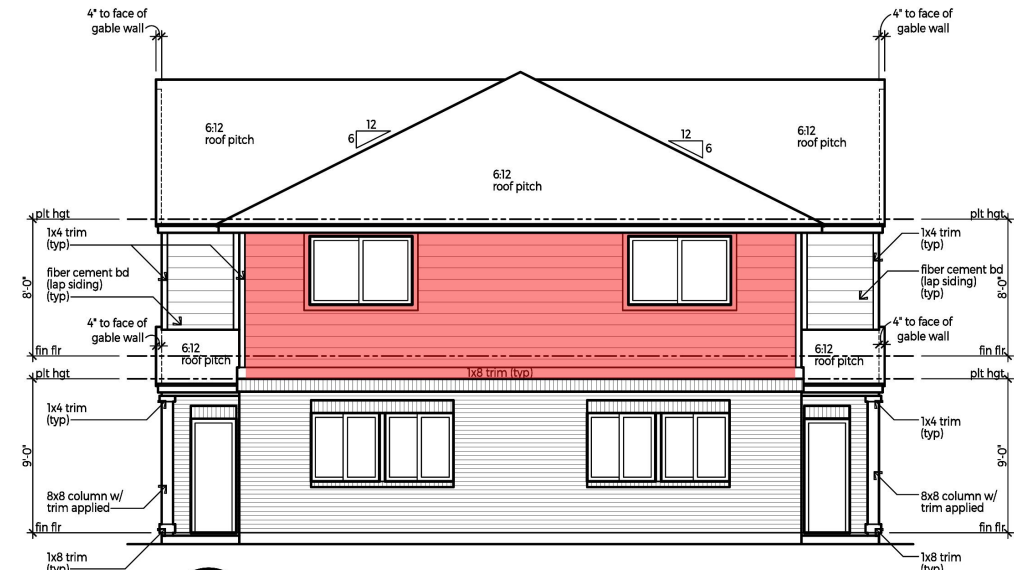
(UNIT 1)



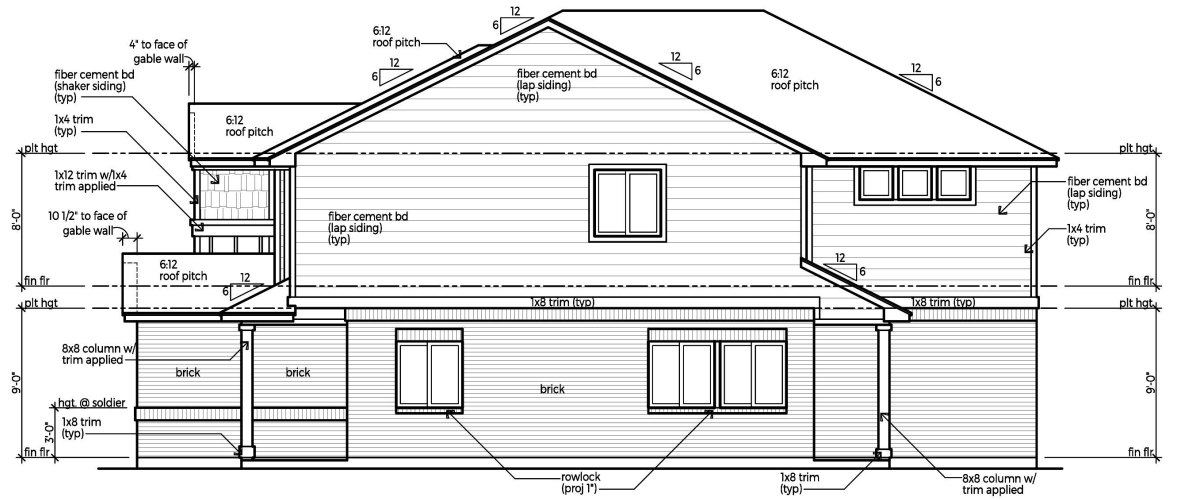
1 front elevation
a.7.g scale 1/8" = 1'-0"



2 left elevation
a.7.h scale 1/8" = 1'-0"



2 rear elevation c w/opt masonry
a.7.g scale 1/8" = 1'-0"



1 right elevation
a.7.h scale 1/8" = 1'-0"



Thank You

