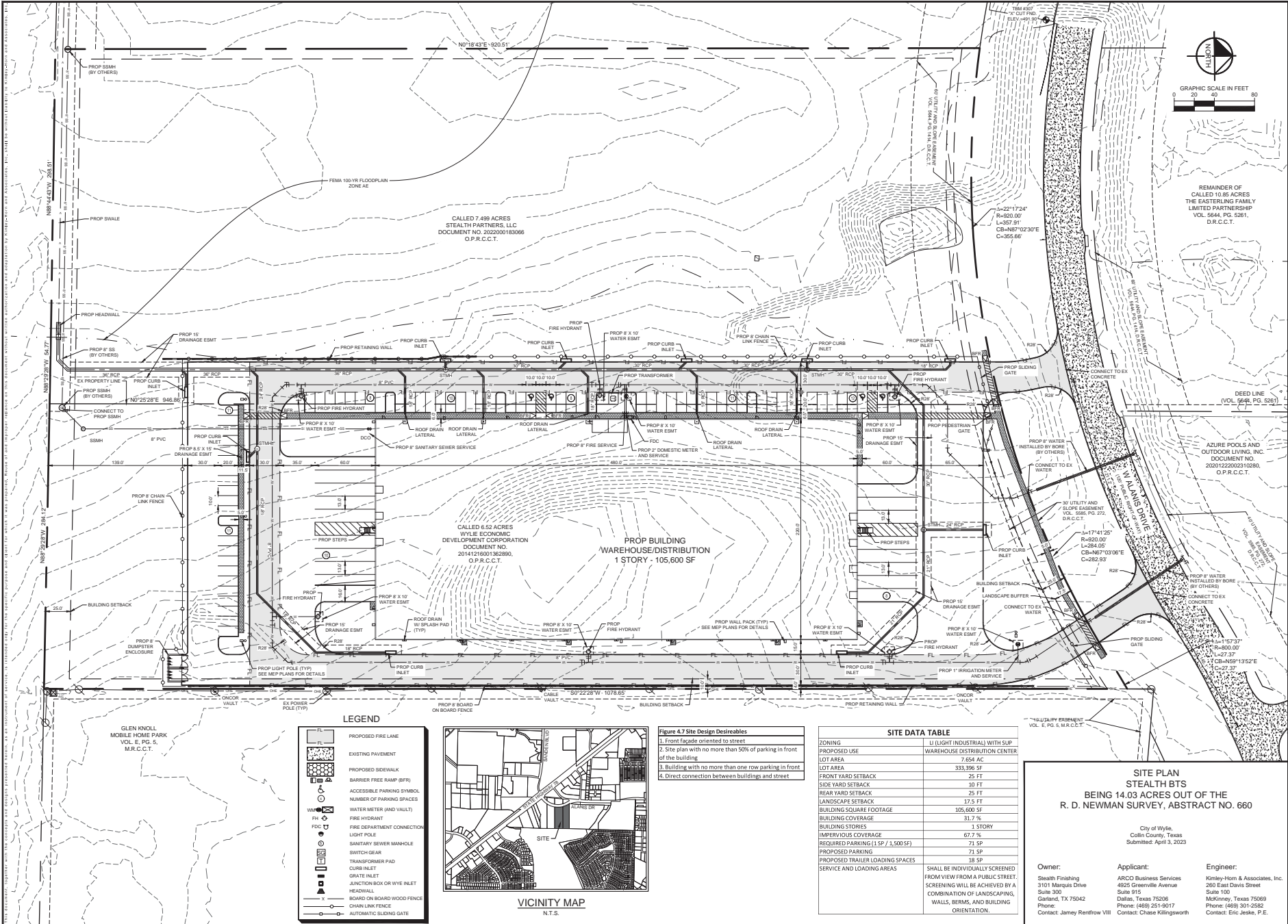


NOTES:
1. ALL DIMENSIONS ARE IN FEET AND DECIMALS THEREOF.
2. ALL DISTANCES ARE MEASURED FROM THE CORNER OF THE SECTION.
3. ALL DISTANCES ARE MEASURED FROM THE CORNER OF THE SECTION.
4. ALL DISTANCES ARE MEASURED FROM THE CORNER OF THE SECTION.
5. ALL DISTANCES ARE MEASURED FROM THE CORNER OF THE SECTION.
6. ALL DISTANCES ARE MEASURED FROM THE CORNER OF THE SECTION.
7. ALL DISTANCES ARE MEASURED FROM THE CORNER OF THE SECTION.
8. ALL DISTANCES ARE MEASURED FROM THE CORNER OF THE SECTION.
9. ALL DISTANCES ARE MEASURED FROM THE CORNER OF THE SECTION.
10. ALL DISTANCES ARE MEASURED FROM THE CORNER OF THE SECTION.
11. ALL DISTANCES ARE MEASURED FROM THE CORNER OF THE SECTION.
12. ALL DISTANCES ARE MEASURED FROM THE CORNER OF THE SECTION.
13. ALL DISTANCES ARE MEASURED FROM THE CORNER OF THE SECTION.
14. ALL DISTANCES ARE MEASURED FROM THE CORNER OF THE SECTION.
15. ALL DISTANCES ARE MEASURED FROM THE CORNER OF THE SECTION.
16. ALL DISTANCES ARE MEASURED FROM THE CORNER OF THE SECTION.
17. ALL DISTANCES ARE MEASURED FROM THE CORNER OF THE SECTION.
18. ALL DISTANCES ARE MEASURED FROM THE CORNER OF THE SECTION.
19. ALL DISTANCES ARE MEASURED FROM THE CORNER OF THE SECTION.
20. ALL DISTANCES ARE MEASURED FROM THE CORNER OF THE SECTION.
21. ALL DISTANCES ARE MEASURED FROM THE CORNER OF THE SECTION.
22. ALL DISTANCES ARE MEASURED FROM THE CORNER OF THE SECTION.
23. ALL DISTANCES ARE MEASURED FROM THE CORNER OF THE SECTION.
24. ALL DISTANCES ARE MEASURED FROM THE CORNER OF THE SECTION.
25. ALL DISTANCES ARE MEASURED FROM THE CORNER OF THE SECTION.
26. ALL DISTANCES ARE MEASURED FROM THE CORNER OF THE SECTION.
27. ALL DISTANCES ARE MEASURED FROM THE CORNER OF THE SECTION.
28. ALL DISTANCES ARE MEASURED FROM THE CORNER OF THE SECTION.
29. ALL DISTANCES ARE MEASURED FROM THE CORNER OF THE SECTION.
30. ALL DISTANCES ARE MEASURED FROM THE CORNER OF THE SECTION.
31. ALL DISTANCES ARE MEASURED FROM THE CORNER OF THE SECTION.
32. ALL DISTANCES ARE MEASURED FROM THE CORNER OF THE SECTION.
33. ALL DISTANCES ARE MEASURED FROM THE CORNER OF THE SECTION.
34. ALL DISTANCES ARE MEASURED FROM THE CORNER OF THE SECTION.
35. ALL DISTANCES ARE MEASURED FROM THE CORNER OF THE SECTION.
36. ALL DISTANCES ARE MEASURED FROM THE CORNER OF THE SECTION.
37. ALL DISTANCES ARE MEASURED FROM THE CORNER OF THE SECTION.
38. ALL DISTANCES ARE MEASURED FROM THE CORNER OF THE SECTION.
39. ALL DISTANCES ARE MEASURED FROM THE CORNER OF THE SECTION.
40. ALL DISTANCES ARE MEASURED FROM THE CORNER OF THE SECTION.
41. ALL DISTANCES ARE MEASURED FROM THE CORNER OF THE SECTION.
42. ALL DISTANCES ARE MEASURED FROM THE CORNER OF THE SECTION.
43. ALL DISTANCES ARE MEASURED FROM THE CORNER OF THE SECTION.
44. ALL DISTANCES ARE MEASURED FROM THE CORNER OF THE SECTION.
45. ALL DISTANCES ARE MEASURED FROM THE CORNER OF THE SECTION.
46. ALL DISTANCES ARE MEASURED FROM THE CORNER OF THE SECTION.
47. ALL DISTANCES ARE MEASURED FROM THE CORNER OF THE SECTION.
48. ALL DISTANCES ARE MEASURED FROM THE CORNER OF THE SECTION.
49. ALL DISTANCES ARE MEASURED FROM THE CORNER OF THE SECTION.
50. ALL DISTANCES ARE MEASURED FROM THE CORNER OF THE SECTION.
51. ALL DISTANCES ARE MEASURED FROM THE CORNER OF THE SECTION.
52. ALL DISTANCES ARE MEASURED FROM THE CORNER OF THE SECTION.
53. ALL DISTANCES ARE MEASURED FROM THE CORNER OF THE SECTION.
54. ALL DISTANCES ARE MEASURED FROM THE CORNER OF THE SECTION.
55. ALL DISTANCES ARE MEASURED FROM THE CORNER OF THE SECTION.
56. ALL DISTANCES ARE MEASURED FROM THE CORNER OF THE SECTION.
57. ALL DISTANCES ARE MEASURED FROM THE CORNER OF THE SECTION.
58. ALL DISTANCES ARE MEASURED FROM THE CORNER OF THE SECTION.
59. ALL DISTANCES ARE MEASURED FROM THE CORNER OF THE SECTION.
60. ALL DISTANCES ARE MEASURED FROM THE CORNER OF THE SECTION.
61. ALL DISTANCES ARE MEASURED FROM THE CORNER OF THE SECTION.
62. ALL DISTANCES ARE MEASURED FROM THE CORNER OF THE SECTION.
63. ALL DISTANCES ARE MEASURED FROM THE CORNER OF THE SECTION.
64. ALL DISTANCES ARE MEASURED FROM THE CORNER OF THE SECTION.
65. ALL DISTANCES ARE MEASURED FROM THE CORNER OF THE SECTION.
66. ALL DISTANCES ARE MEASURED FROM THE CORNER OF THE SECTION.
67. ALL DISTANCES ARE MEASURED FROM THE CORNER OF THE SECTION.
68. ALL DISTANCES ARE MEASURED FROM THE CORNER OF THE SECTION.
69. ALL DISTANCES ARE MEASURED FROM THE CORNER OF THE SECTION.
70. ALL DISTANCES ARE MEASURED FROM THE CORNER OF THE SECTION.
71. ALL DISTANCES ARE MEASURED FROM THE CORNER OF THE SECTION.
72. ALL DISTANCES ARE MEASURED FROM THE CORNER OF THE SECTION.
73. ALL DISTANCES ARE MEASURED FROM THE CORNER OF THE SECTION.
74. ALL DISTANCES ARE MEASURED FROM THE CORNER OF THE SECTION.
75. ALL DISTANCES ARE MEASURED FROM THE CORNER OF THE SECTION.
76. ALL DISTANCES ARE MEASURED FROM THE CORNER OF THE SECTION.
77. ALL DISTANCES ARE MEASURED FROM THE CORNER OF THE SECTION.
78. ALL DISTANCES ARE MEASURED FROM THE CORNER OF THE SECTION.
79. ALL DISTANCES ARE MEASURED FROM THE CORNER OF THE SECTION.
80. ALL DISTANCES ARE MEASURED FROM THE CORNER OF THE SECTION.
81. ALL DISTANCES ARE MEASURED FROM THE CORNER OF THE SECTION.
82. ALL DISTANCES ARE MEASURED FROM THE CORNER OF THE SECTION.
83. ALL DISTANCES ARE MEASURED FROM THE CORNER OF THE SECTION.
84. ALL DISTANCES ARE MEASURED FROM THE CORNER OF THE SECTION.
85. ALL DISTANCES ARE MEASURED FROM THE CORNER OF THE SECTION.
86. ALL DISTANCES ARE MEASURED FROM THE CORNER OF THE SECTION.
87. ALL DISTANCES ARE MEASURED FROM THE CORNER OF THE SECTION.
88. ALL DISTANCES ARE MEASURED FROM THE CORNER OF THE SECTION.
89. ALL DISTANCES ARE MEASURED FROM THE CORNER OF THE SECTION.
90. ALL DISTANCES ARE MEASURED FROM THE CORNER OF THE SECTION.
91. ALL DISTANCES ARE MEASURED FROM THE CORNER OF THE SECTION.
92. ALL DISTANCES ARE MEASURED FROM THE CORNER OF THE SECTION.
93. ALL DISTANCES ARE MEASURED FROM THE CORNER OF THE SECTION.
94. ALL DISTANCES ARE MEASURED FROM THE CORNER OF THE SECTION.
95. ALL DISTANCES ARE MEASURED FROM THE CORNER OF THE SECTION.
96. ALL DISTANCES ARE MEASURED FROM THE CORNER OF THE SECTION.
97. ALL DISTANCES ARE MEASURED FROM THE CORNER OF THE SECTION.
98. ALL DISTANCES ARE MEASURED FROM THE CORNER OF THE SECTION.
99. ALL DISTANCES ARE MEASURED FROM THE CORNER OF THE SECTION.
100. ALL DISTANCES ARE MEASURED FROM THE CORNER OF THE SECTION.



BY

DATE

REVISIONS

No.

Kimley»Horn

© 2023 KIMLEY-HORN AND ASSOCIATES, INC.
260 EAST DAVIS STREET, SUITE 100, MCKINNEY, TX 75069
PHONE: (469) 901-9900
WWW.KIMLEY-HORN.COM

PRELIMINARY

Not for construction or other purposes.

Kimley»Horn

N/A PROJECT

N/A DATE

APRIL 2023

SCALE: AS SHOWN

DESIGNED BY

DRAWN BY

CHECKED BY

ET/

STEALTH BTS

WYLLIE, TEXAS

PREPARED FOR

ARCO BUSINESS SERVICES

SITE PLAN

STEALTH BTS

BEING 14.03 ACRES OUT OF THE

R. D. NEWMAN SURVEY, ABSTRACT NO. 660

City of Wylie,
Collin County, Texas
Submitted: April 3, 2023

Owner:

Stealth Finishing
3101 Marquis Drive
Suite 300
Garland, TX 75042
Phone: (469) 251-9017
Contact: Jamey Rierdorf VIII

Applicant:

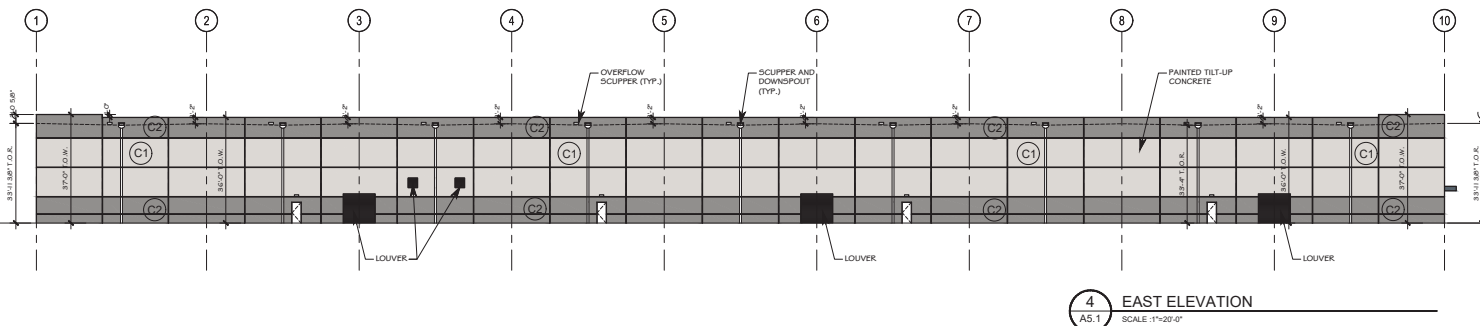
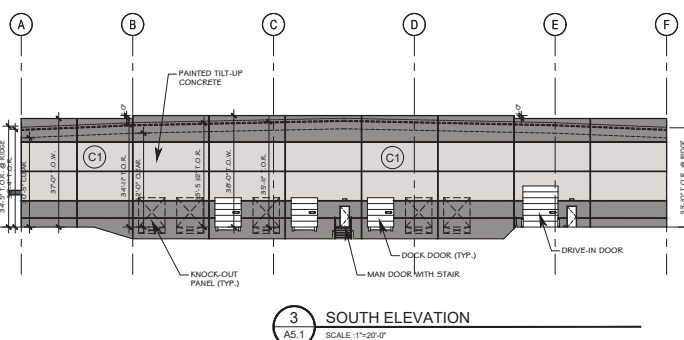
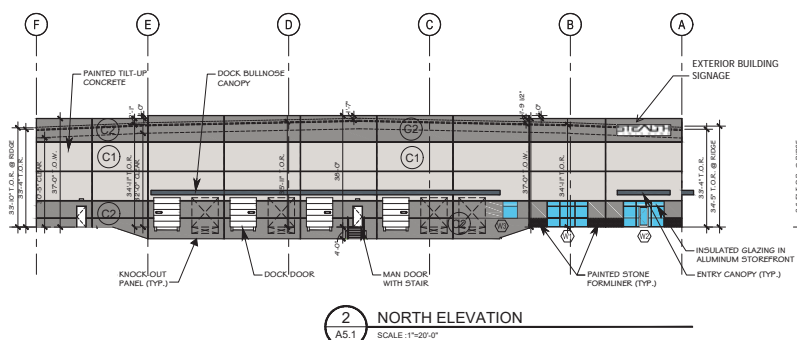
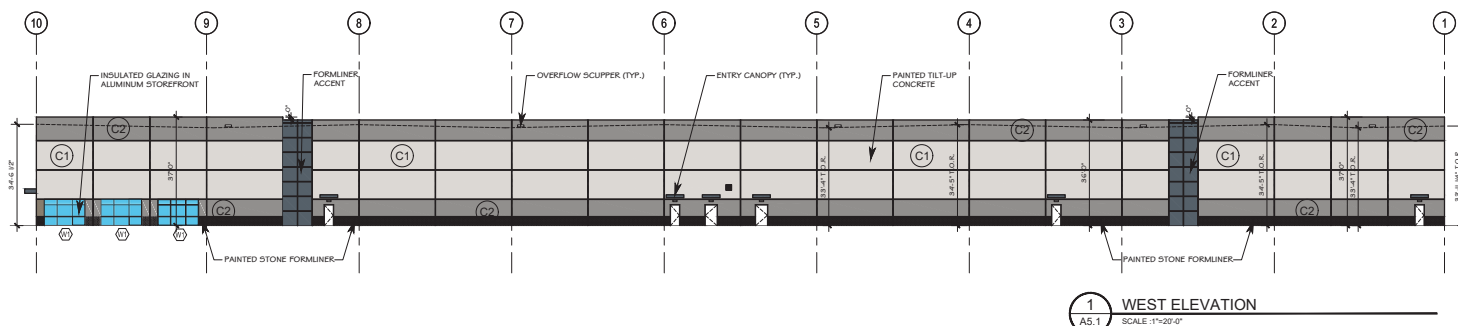
ARCO Business Services
4925 Greenville Avenue
Suite 915
Dallas, Texas 75206
Phone: (469) 251-9017
Contact: Chase Killingworth

Engineer:







Kimley-Horn & Associates, Inc.
260 East Davis Street
Suite 100
McKinney, Texas 75069
Phone: (469) 301-2582
Contact: Eric Jeske, P.E.

SHEET NUMBER

SP



- ### 4-9 ARCHITECTURAL DESIGN
1. USE OF TWO COMPLEMENTARY PRIMARY FACADE MATERIALS TO HELP ACHIEVE FACADE ARTICULATION (CANOPIES AND TILT)
 2. APPLICATION OF BASE STANDARDS TO FACADES NOT FACING A PUBLIC STREET BUT VISIBLE FROM PUBLIC STREET (WEST SIDE)
 3. USE OF ARCHITECTURAL DETAILING TO PROVIDE VARIETY IN THE VISUAL APPEARANCE OF THE BUILDING (COLORS, FORMLINER, CANOPIES, GLASS)
- BUILDING HEIGHT AT TALLEST POINT - 36'-0" FROM F.F.E.
- ONE STORY BUILDING

FINISH SCHEDULE	
TEST PANELS	
 C1	PAINT COLOR 1 SHERWIN WILLIAMS 'ORIGAMI WHITE' SW7636 NOTE: PRIMARY COLOR, ULTRACRETE, MEDIUM TEXTURE FINISH
 C2	PAINT COLOR 2 SHERWIN WILLIAMS 'ESSENTIAL GRAY' SW6002 NOTE: ACCENT COLOR, ULTRACRETE, MEDIUM TEXTURE FINISH
 C3	PAINT COLOR 3 SHERWIN WILLIAMS 'DOWNING SLATE' SW2619 NOTE: ACCENT COLOR, ULTRACRETE, MEDIUM TEXTURE FINISH
<u>DOORS AND FRAMES</u>	
	SHERWIN WILLIAMS 'ESSENTIAL GRAY' SW6002 FINISH: GLOSS
<u>EXTERIOR CANOPIES</u>	
	MATCH SHERWIN WILLIAMS 'DOWNING SLATE' SW2619
<u>STOREFRONT FINISHES:</u> (TYP. FOR ALL)	
	FRAME FINISH: CLEAR ANODIZED
	GLAZING: 1" INSULATED GLASS, GRAY TINTED (GRAVITY 2 OR APPROVED EQUAL) IN PREFINISHED, THERMALLY BROKEN ALUMINUM FRAMES, 2" x 4, 5"
	CAULKING: MATCH STOREFRONT FRAME (GRAY)
	BRAZE METAL IN STOREFRONT FRAMING (CLEAR ANODIZED)
<u>EXTERIOR METAL:</u> BRAZE METAL	
	CLEAR ANODIZED
<u>LOUVERS / EXHAUST FANS IN EXTERIOR WALLS:</u>	
	MILL FINISH (ALTERNATE: WHITE)

PLANTING NOTES:

- LANDSCAPE CONTRACTOR SHALL BE RESPONSIBLE FOR VERIFYING THE LOCATION OF ALL UNDERGROUND UTILITIES, PIPES, STRUCTURES, AND LINE RUNS IN THE FIELD PRIOR TO THE INSTALLATION OF ANY PLANT MATERIAL.
- IT IS THE RESPONSIBILITY OF THE CONTRACTOR TO ADVISE THE LANDSCAPE ARCHITECT OF ANY CONDITION FOUND ON THE SITE WHICH PROHIBITS INSTALLATION AS SHOWN ON THESE DRAWINGS.
- ALL PLANT MATERIAL SHALL BE MAINTAINED IN A HEALTHY AND GROWING CONDITION AND MUST BE REPLACED WITH PLANT MATERIAL OF SAME VARIETY AND SIZE IF DAMAGED, DESTROYED, OR REMOVED. LANDSCAPE CONTRACTOR SHALL BE RESPONSIBLE FOR FINE GRADING AND REMOVAL OF DEBRIS PRIOR TO PLANTING IN ALL AREAS.
- FINAL FINISH GRADING SHALL BE REVIEWED BY THE LANDSCAPE ARCHITECT. LANDSCAPE CONTRACTOR SHALL BE RESPONSIBLE FOR ANY ADDITIONAL TOPSOIL REQUIRED TO CREATE A SMOOTH CONDITION PRIOR TO PLANTING.
- ALL PLANT QUANTITIES LISTED ARE FOR INFORMATION ONLY. IT IS THE CONTRACTOR'S RESPONSIBILITY TO PROVIDE FULL COVERAGE IN ALL PLANTING AREAS AS SPECIFIED IN THE PLANT SCHEDULE AND VERIFY ALL QUANTITIES.
- LANDSCAPE CONTRACTOR TO PROVIDE STEEL EDGING (REFER TO MATERIALS PAGE) BETWEEN ALL PLANTING BEDS AND LAWN AREAS.
- ALL PLANT MATERIAL SHALL CONFORM TO THE SPECIFICATIONS AND SIZES GIVEN IN THE PLANT LIST AND SHALL BE NURSERY GROWN IN ACCORDANCE WITH THE AMERICAN STANDARD FOR NURSERY STOCK, LATEST EDITION AMERICAN ASSOCIATION OF NURSERYMEN STANDARDS. ANY PLANT SUBSTITUTION SHALL BE APPROVED BY LANDSCAPE ARCHITECT PRIOR TO PURCHASE.
- LANDSCAPE CONTRACTOR IS RESPONSIBLE FOR ANY COORDINATION WITH OTHER CONTRACTORS ON SITE AS REQUIRED TO ACCOMPLISH ALL PLANTING OPERATIONS.
- ALL NEW PLANTING AREAS TO BE AMENDED PER SPECIFICATIONS.
- ANY PLANT MATERIAL THAT DOES NOT SURVIVE SHALL BE REPLACED WITH AN EQUIVALENT SIZE AND SPECIES WITHIN THIRTY (30) DAYS.
- PLANT MATERIAL SHALL BE PRUNED AS NECESSARY TO CONTROL SIZE BUT NOT TO DISRUPT THE NATURAL GROWTH PATTERN OR CHARACTERISTIC FORM OF THE PLANT EXCEPT AS NECESSARY TO ACHIEVE HEIGHT CLEARANCE FOR VISIBILITY AND PEDESTRIAN PASSAGE OR TO ACHIEVE A CONTINUOUS OPACQUE HEDGE IF REQUIRED.
- LANDSCAPED AREAS SHALL BE KEPT FREE OF TRASH, WEEDS, DEBRIS, AND DEAD PLANT MATERIAL.
- ALL LIME STABILIZED SOIL & ORGANIC SELECT FILL FOR BUILDING SHOULD BE REMOVED FROM PLANTING AREAS TO A DEPTH OF 2" & REPLACED WITH ORGANIC IMPORTED TOPSOIL FILL.
- TREES OVERHANGING PEDESTRIAN WALKWAYS AND PARKING SHALL HAVE A 7' MINIMUM CLEAR TRUNK HEIGHT TO MEET ACCESSIBILITY STANDARDS. TREES OVERHANGING PUBLIC STREETS, DRIVE ALLEYS, AND FIRE LANES SHALL HAVE A 14' MINIMUM CLEAR TRUNK HEIGHT.
- CONTRACTOR TO PROVIDE 18 MONTH WARRANTY AFTER ALL CONSTRUCTION IS COMPLETE.

TREE PROTECTION NOTES:

- CONTACT DEVELOPMENT SERVICES FOR A TREE REMOVAL PERMIT AT 972-262-5300 PRIOR TO REMOVAL OR TRANSPLANTING OF ANY TREES.
- ALL TREES WHICH ARE TO REMAIN ON SITE SHALL BE PROTECTED WITH A (4') TALL BRIGHTLY COLORED PLASTIC FENCE, OR SILT FENCE, PLACED AT THE DIRT LINE OF THE TREES.
- PRIOR TO THE PRE-CONSTRUCTION MEETING OR OBTAINING A GRADING PERMIT, ALL TREE MARKINGS AND PROTECTIVE FENCING SHALL BE INSTALLED BY THE OWNER AND SHALL BE INSPECTED BY THE DEVELOPMENT SERVICES LANDSCAPE ARCHITECT.
- NO EQUIPMENT SHALL BE CLEARED, OR HARMFUL LIQUIDS DEPOSITED WITHIN THE LIMITS OF THE ROOT ZONE OF TREES WHICH REMAIN ON SITE.
- NO BOMS, WIRES, OR OTHER ATTACHMENTS SHALL BE ATTACHED TO ANY TREE TO REMAIN ON SITE.
- VEHICULAR AND CONSTRUCTION EQUIPMENT SHALL NOT PARK OR DRIVE WITHIN THE LIMITS OF THE DIRT LINE.
- GRADE CHANGES IN EXCESS OF 3 INCHES (CUT OR FILL) SHALL NOT BE ALLOWED WITHIN A ROOT ZONE, UNLESS ADEQUATE TREE PRESERVATION METHODS ARE APPROVED BY THE CITY.
- NO FENCING SHALL BE ALLOWED WITHIN THE DIRT LINE OF A TREE, UNLESS APPROVED BY THE CITY.
- ALL REMOVED TREES SHALL BE CHIPPED AND USED FOR MULCH ON SITE OR Hauled OFF-SITE.
- ALL TREE MAINTENANCE TECHNIQUES SHALL BE IN CONFORMANCE WITH AMERICAN NATIONAL STANDARDS FOR TREE CARE OPERATIONS, AND ASIA INDUSTRY CERTIFIED STANDARDS. IMPROPER OR MALICIOUS PRUNING TECHNIQUES ARE STRICTLY PROHIBITED.

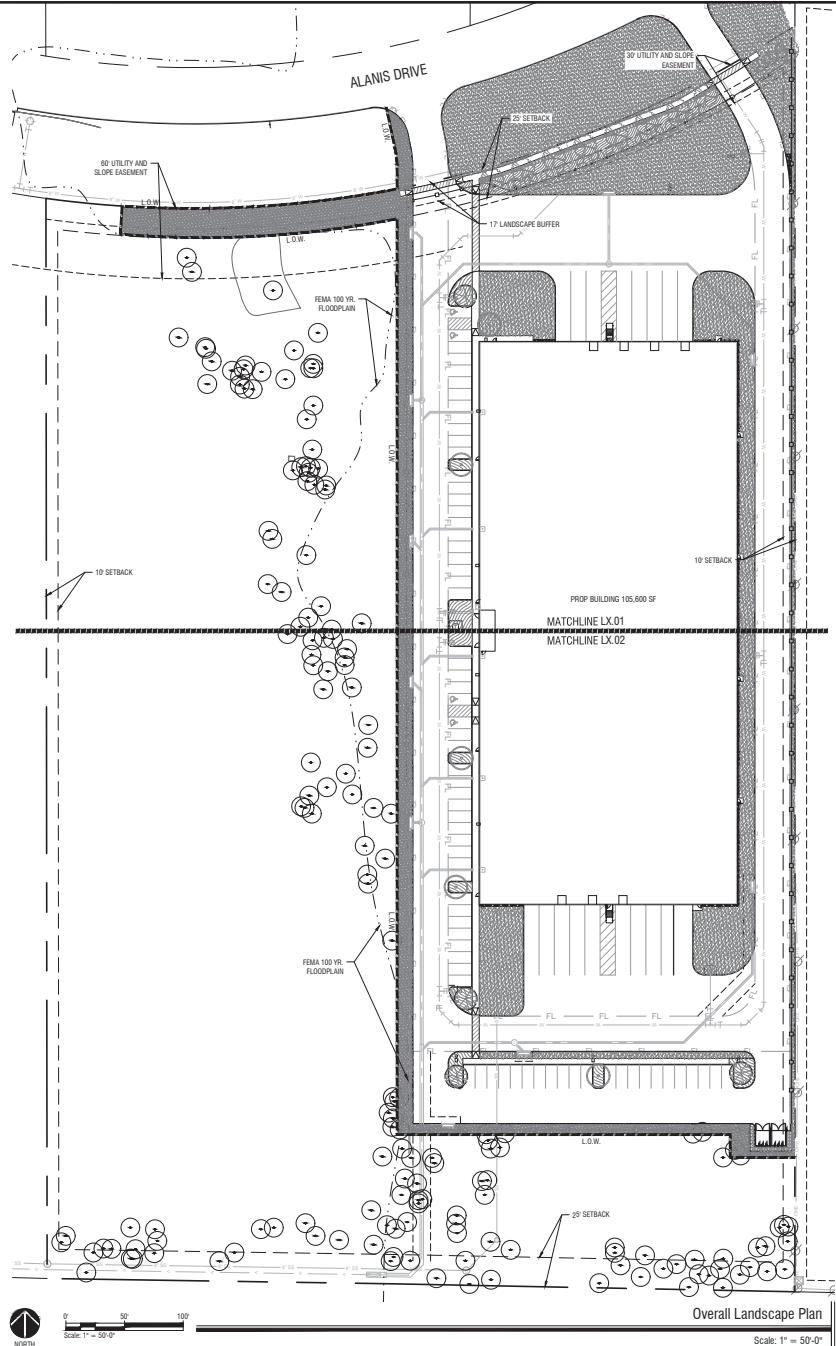
PLANT SCHEDULE

TREES	COMMON / BOTANICAL NAME	CONT.	SIZE	SPACING	REMARKS	
	Bald Cypress / <i>Taxodium distichum</i>	3" cal. min.	14'-16" ht		B&B, NURSERY GROWN, MATCHED, FULL, WELL-BRANCHED, STRONG CENTRAL LEADER, 7' CLEAR AT SIDEWALKS	
	Live Oak / <i>Quercus virginiana</i>	3" cal. min.	14'-16" ht		B&B, NURSERY GROWN, MATCHED, FULL, WELL-BRANCHED, STRONG CENTRAL LEADER, 7' CLEAR AT SIDEWALKS	
	Texas Red Oak / <i>Quercus buckleyi</i>	3" cal. min.	14'-16" ht		B&B, NURSERY GROWN, MATCHED, FULL, WELL-BRANCHED, STRONG CENTRAL LEADER, 7' CLEAR AT SIDEWALKS	
FLOWERING TREES	COMMON / BOTANICAL NAME	CONT.	SIZE	SPACING	REMARKS	
	Desert Willow / <i>Chilopsis linearis</i>	45 gal	8'-10" ht		CONTAINER, NURSERY GROWN, MATCHED, FULL, WELL-BRANCHED, MULT-TRUNK (3 MIN.)	
	Texas Redbud / <i>Cercis canadensis texensis</i>	45 gal	8'-10" ht		CONTAINER, NURSERY GROWN, MATCHED, FULL, WELL-BRANCHED	
SHRUBS	COMMON / BOTANICAL NAME	CONT.	SIZE	SPACING	REMARKS	
	Dwarf Southern Wax Myrtle / <i>Myrica pauciflora</i>	5 gal	36" h x 24" w	36" OC	CONTAINER, NURSERY GROWN, MATCHED AND WELL ROOTED	
	Green Cloud Texas Ranger / <i>Leucophyllum frutescens</i> 'Green Cloud'	TM	5 gal	36" h x 24" w	36" OC	CONTAINER, NURSERY GROWN, MATCHED AND WELL ROOTED
	Regal Mid Pink Muley Grass / <i>Muhlenbergia capillaris</i> 'Regal Mist'	5 gal	36" h x 18" w	36" OC	CONTAINER, NURSERY GROWN, MATCHED AND WELL ROOTED	
	Rose Creek Abelia / <i>Abelia</i> x 'Rose Creek'	5 gal	36" h x 24" w	36" OC	CONTAINER, NURSERY GROWN, MATCHED AND WELL ROOTED	
GROUND COVERS	COMMON / BOTANICAL NAME	CONT.	SIZE	SPACING	REMARKS	
	Bermuda Grass / <i>Cynodon dactylon</i>	sod			REFER TO SPECIFICATIONS	
	Purple Watercress / <i>Esoynymus fortunei</i> 'Coloratus'	4" pot	8" h x 8" w	12" o.c.	CONTAINER, NURSERY GROWN, MATCHED AND WELL ROOTED	

CODE LANDSCAPE CALCULATIONS TABLE:

Wylie Industrial - Wylie Code Calculations Chart			
Site Data		AC	SF
Total Site Area		14.03	611,132
Surface Parking Spaces			72
Landscape Required in Yard			
Required (SF)	Provided (SF)		
20% of site to be landscaped	122,230	297,291	
Landscaping in front yard	Yes	Yes	
Landscaping required in side and rear yards adjacent to residential	No	No	
Landscape of Parking Lots			
Required	Provided		
1 Tree / 12 Parking Spaces	9	9	
50 SF Landscape / Parking Space	3,600	3,929	
No parking spaces further than 50' from landscaped area on site	Yes	Yes	
Landscaped areas every 12 spaces	Yes	Yes	
Street Frontage Landscape			
Required	Provided		
Alanis Drive			
At least 50% of required front yard developed as 10' landscaped buffer	Yes	Yes	
1 Tree (2" cal.) 30'-40' LF	9	9	
4 Meandering concrete walkway on perimeter when adjacent to thoroughfare	Yes	Yes	
Visual Screening			
Required	Provided		
From Yard (Loading and Service Areas)			
1 Flowering Tree 20' LF	15	15	
5' wide screening strip, plants 3' in height when planted	Yes	Yes	
Side Yard			
Board on Board Fence	Yes	Yes	

Figure 4.5 Desirable Landscape Design Requirements	Required	Provided
(Desirable) Landscaping 10% more in excess of 50 sq ft spaces	3,900 SF	5915 SF
(Desirable) Increase in minimum width of Landscape Buffer by 20%	10' Wide	17.9' Wide
(Desirable) Landscaped pedestrian connection to main entrance	No	Yes
(Desirable) Landscaping exceeds the minimum by 10%	103346 SF	297291 SF



PRELIMINARY

Kimley»Horn

© 2023 KIMLEY-HORN AND ASSOCIATES, INC.
280 EAST DAVIS STREET, SUITE 100, MCKENNEY, TX 76860
PH: 817.293.8800
WWW.KHACONLINE.COM 73-2426

KHA PROJECT
DATE
SCALE
DESIGNED BY
DRAWN BY
CHECKED BY
CLS

APRIL 2023
AS SHOWN
N/A
N/A
N/A
N/A

STEALTH BTS
WYLIE, TEXAS
PREPARED FOR
ARCO BUSINESS SERVICES

OVERALL LANDSCAPE PLAN

SHEET NUMBER
L0.01

BY

DATE

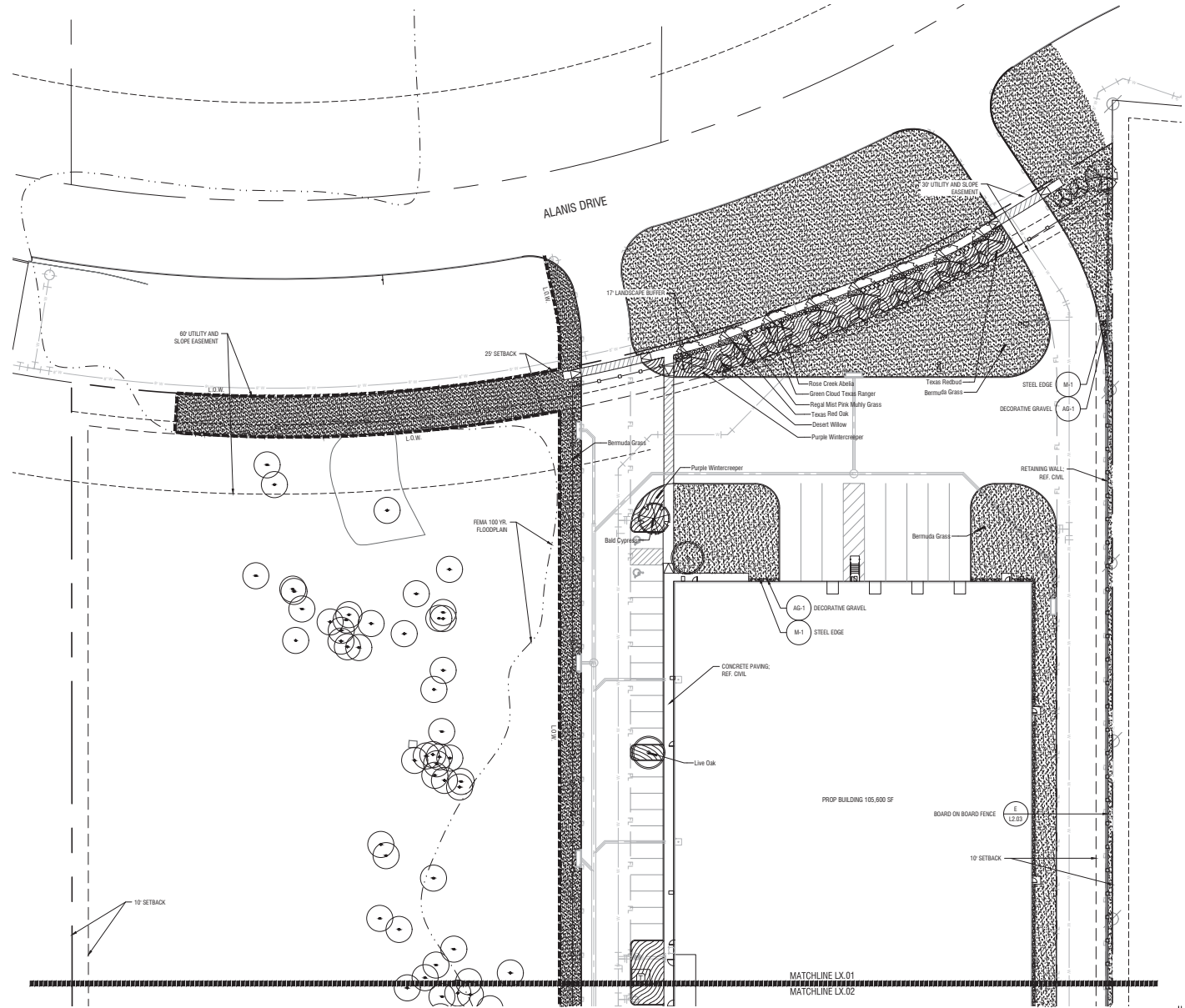
REVIEWS

NO.

A

- LANDSCAPE CONTRACTOR SHALL BE RESPONSIBLE FOR VERIFYING THE LOCATION OF ALL UNDERGROUND UTILITIES PRIOR TO ANY CONSTRUCTION. THE CONTRACTOR SHALL BE RESPONSIBLE FOR OBTAINING ALL NECESSARY PERMITS AND PAYMENT FOR ANY REQUIRED UTILITIES.
- THE RESPONSIBILITY OF THE CONTRACTOR TO REMOVE THE LANDSCAPE SHALL BE BASED ON THE CONDITIONS FOUND ON THE SITE WHICH CORRELATES REALITY AS SHOWN ON THESE DRAWINGS.
- ALL PLANT MATERIAL SHALL BE MAINTAINED IN A HEALTHY AND GROWING CONDITION AND MUST BE REPLACED WITHIN 14 DAYS OF THE DATE OF REMOVAL. THE CONTRACTOR SHALL BE RESPONSIBLE FOR THE GRASSING AND REMOVAL OF DEBRIS PRIOR TO THE START OF ANY CONSTRUCTION.
- FRESH GRASS GRADING SHALL BE REVIEWED BY THE LANDSCAPE ARCHITECT. LANDSCAPE CONTRACTOR SHALL BE RESPONSIBLE FOR THE GRASSING AND REMOVAL OF DEBRIS PRIOR TO THE START OF ANY CONSTRUCTION.
- ALL PLANT MATERIAL LISTED ARE FOR INFORMATION ONLY. IF THE CONTRACTORS SCHEDULE AND/OR BUDGET REQUIRES A DIFFERENT PLANT MATERIAL, THE CONTRACTOR SHALL BE RESPONSIBLE TO PROVIDE FULL COVERAGE IN ALL PLANTING AREAS AS SPECIFIED IN THE PLANT SCHEDULE AND VERIFY ALL PLANT MATERIAL WITH THE LANDSCAPE ARCHITECT PRIOR TO PLANTING.
- ALL PLANT MATERIAL SHALL CONFORM TO STATE, EDGING (REFER TO MATERIALS PAGE BETWEEN ALL PLANTING AREAS) AND ALL PLANTING SHALL BE DONE TO THE SPECIFICATIONS AND SIZES GIVEN IN THE PLANT LIST AND TO THE SPECIFICATIONS AND SIZES GIVEN IN THE PLANT SCHEDULE. THE CONTRACTOR SHALL BE RESPONSIBLE FOR THE GRASSING AND REMOVAL OF DEBRIS PRIOR TO THE START OF ANY CONSTRUCTION.
- LATEST EDITION AMERICAN ASSOCIATION OF NURSESMEN STANDARDS, WITH ANY PLANT SUBSTITUTIONS APPROVED BY THE LANDSCAPE ARCHITECT SHALL BE USED FOR ALL PLANTING.
- LANDSCAPE CONTRACTOR IS RESPONSIBLE FOR ANY COORDINATION WITH OTHER CONTRACTORS ON SITE AND TO THE CITY OF SAN ANTONIO.
- ALL NEW PLANTING AREAS TO BE DONE PER SPECIFICATIONS.
- ANY PLANT MATERIAL THAT DOES NOT SURVIVE SHALL BE REPLACED WITH AN EQUIVALENT SIZE AND SPECIES TO THE ORIGINAL SPECIES AND SIZE.
- PLANT MATERIAL SHALL BE PRUNED AS NECESSARY TO CONTROL SIZE, SO AS NOT TO DISRUPT THE ADJACENT PLANTING AREAS AND TO MAINTAIN THE PLANTING AREAS IN A HEALTHY AND GROWING CONDITION.
- ACHIEVE HEDGE CLEARANCE FOR VISIBILITY AND PEDESTRIAN PASSAGE OR TO REMOVE A CONTINUOUS BARRIER TO PEDESTRIAN PASSAGE.
- LANDSCAPED AREAS SHALL BE KEPT FREE OF TRASH, WEEDS, ORGANIC AND DEAD PLANT MATERIAL.
- ALL PLANTING AREAS SHALL BE MAINTAINED IN A HEALTHY AND GROWING CONDITION. ALL PLANTING AREAS TO A DEPTH OF 2" REPLACED WITH ORGANIC AND PROPOSED TOPSOIL, FILL, MULCH, AND FERTILIZER TO MAINTAIN PLANTING AREAS IN A HEALTHY AND GROWING CONDITION. TRUNK HEIGHT TO MAINTAIN ACCESSIBILITY STANDARDS. TREES OVERHANGING PUBLIC STREETS, DRIVEWAYS, AND ADJACENT PLANTING AREAS SHALL BE TRIMMED TO MAINTAIN ACCESSIBILITY STANDARDS.
- CONTRACTOR TO PROVIDE 18 MONTH WARRANTY AFTER ALL CONSTRUCTION IS COMPLETE.

AG-1	DECORATIVE GRAVEL (BUILDING) TYPE: GRAVEL SIZE: 3/8" x 2" MMA COATED (REF. DETAILS) INSTALL: REF. DETAILS AND SPECIFICATIONS SUPPLIER: JENWELL CONTACT: 1.844.576.1346 APPROVAL: SAMPLE, MUCKUP	TEARS BLACK 3/8" x 4" STEEL PLATE POWDERCOATED (COLOR BLACK) LENGTH: PER PLANS INSTALL: REF. DETAILS. ALL JOINTS TO BE FLUSH AND LEVEL APPROVAL: CUT SHEET, SAMPLE
M-1	STEEL EDGE (AT GRAVEL) TYPE: 3/8" x 4" STEEL PLATE COLOR: POWDERCOATED (COLOR BLACK) SIZE: LENGTH: PER PLANS INSTALL: REF. DETAILS. ALL JOINTS TO BE FLUSH AND LEVEL APPROVAL: CUT SHEET, SAMPLE	
M-2	STEEL EDGE (AT PLANTING) TYPE: 1/4" x 4" STEEL PLATE COLOR: POWDERCOATED (COLOR BLACK) SIZE: LENGTH: PER PLANS INSTALL: REF. DETAILS. ALL JOINTS TO BE FLUSH AND LEVEL APPROVAL: CUT SHEET, SAMPLE	



Planting Plan

Scale: 1" = 30'-0"

A

[illegible]

Kimley»Horn
© 2023 KIMLEY-HORN AND ASSOCIATES, INC.
260 EAST DAVIS STREET, SUITE 100, MCKINNEY, TX 75069

© 2023 KINLEY+HORN AND ASSOCIATES, INC.
17 DAVIS STREET, SUITE 100, MCKINNEY, TX 75069

PRELIMINARY
FOR REVIEW ONLY
Not for construction or permit purposes

Kindergarten

P.L.A. Courtney L. Smith
A. No. 2020 Date 04/14/2023

DATE	SCALE	AS SHOWN	N/P	N/P	CLS
APRIL 2023			SIGNED BY	DRAWN BY	CHECKED BY
064464511					

STEALTHBTS
WYLLIE, TEXAS
PREPARED FOR
ARCO BUSINESS SERVICES

PLANTING PLAN

SHEET NUMBER
L2.01

1. LANDSCAPE CONTRACTOR SHALL BE RESPONSIBLE FOR VERIFYING THE LOCATION OF ALL ABOVEGROUND UTILITIES, PIPES, STRUCTURES, AND LINES IN THE FIELD PRIOR TO THE INSTALLATION OF ANY PLANT MATERIAL.

2. IT IS THE RESPONSIBILITY OF THE CONTRACTOR TO ADVISE THE LANDSCAPE ARCHITECT OF ANY CHANGES TO THE SITE PLAN OR PLANTING PLAN.

3. ALL PLANT MATERIAL SHALL BE MAINTAINED IN A HEALTHY AND GROWING CONDITION AND MUST BE REPLANTED IMMEDIATELY IN THE EVENT OF LOSS OR DAMAGE.

4. LANDSCAPE CONTRACTOR SHALL BE RESPONSIBLE FOR FINE GRADING AND REMOVAL OF DEBRIS FROM THE PROJECT SITE.

5. FINAL GRADING SHALL BE REVIEWED BY THE LANDSCAPE ARCHITECT. LANDSCAPE CONTRACTOR SHALL BE RESPONSIBLE FOR OBTAINING ALL NECESSARY PERMITS AND APPROVALS PRIOR TO PROVIDING.

6. ALL PLANTING MATERIAL LISTED FOR INFORMATION ONLY. IT IS THE CONTRACTOR'S RESPONSIBILITY TO PROVIDE FULL COVERAGE IN ALL PLANTING AREAS AS SPECIFIED IN THE PLANT SCHEDULE AND VERIFY ALL PLANTING MATERIAL IS AVAILABLE AT THE TIME OF INSTALLATION.

7. LANDSCAPE CONTRACTOR TO PROVIDE STEEL EDGING (PER MATERIALS PAGE) BETWEEN ALL PLANTING AREAS AND DRIVEWAYS.

8. ALL PLANT MATERIAL, SUCH AS THE SPECIFICATIONS AND SIZES GIVEN IN THE PLANT LIST SHALL BE APPROVED BY THE LANDSCAPE ARCHITECT PRIOR TO PURCHASE.

9. THE LATEST EDITION AMERICAN ASSOCIATION OF NURSERIES STANDARDS SHALL BE IN FULL SUBSTITUTION SHALL BE APPROVED BY LANDSCAPE ARCHITECT PRIOR TO PURCHASE.

10. ALL NEW PLANTING MATERIAL SHALL BE DELIVERED TO THE PROJECT SITE WITH OTHER CONTRACTORS ON SITE AS REQUIRED TO ACCOMPLISH ALL PLANTING OPERATIONS.

11. ALL NEW PLANTING MATERIAL TO BE REPLACED WITH EQUIVALENT MATERIAL.

12. ANY PLANT MATERIAL THAT DOES NOT SURVIVE SHALL BE REPLACED WITH AN EQUIVALENT SIZE AND SPECIFICATION.

13. LANDSCAPE CONTRACTOR SHALL BE PRIMED AND READY TO CONTRACT, SOIL NOT TO DISMURP THE CONTRACTOR'S OBLIGATION TO MAINTAIN THE PROJECT SITE AND TO BE RESPONSIBLE TO ACHIEVE NEIGHBOR CLEANLINESS FOR VISIBILITY AND PEDESTRIAN PATTERNING OR TO ACHIEVE A CONTINUOUS CURB LINE.

14. LANDSCAPED AREAS SHALL BE KEPT FREE OF TRUNK, WEEDS, OBES, AND DEAD PLANT MATERIAL.

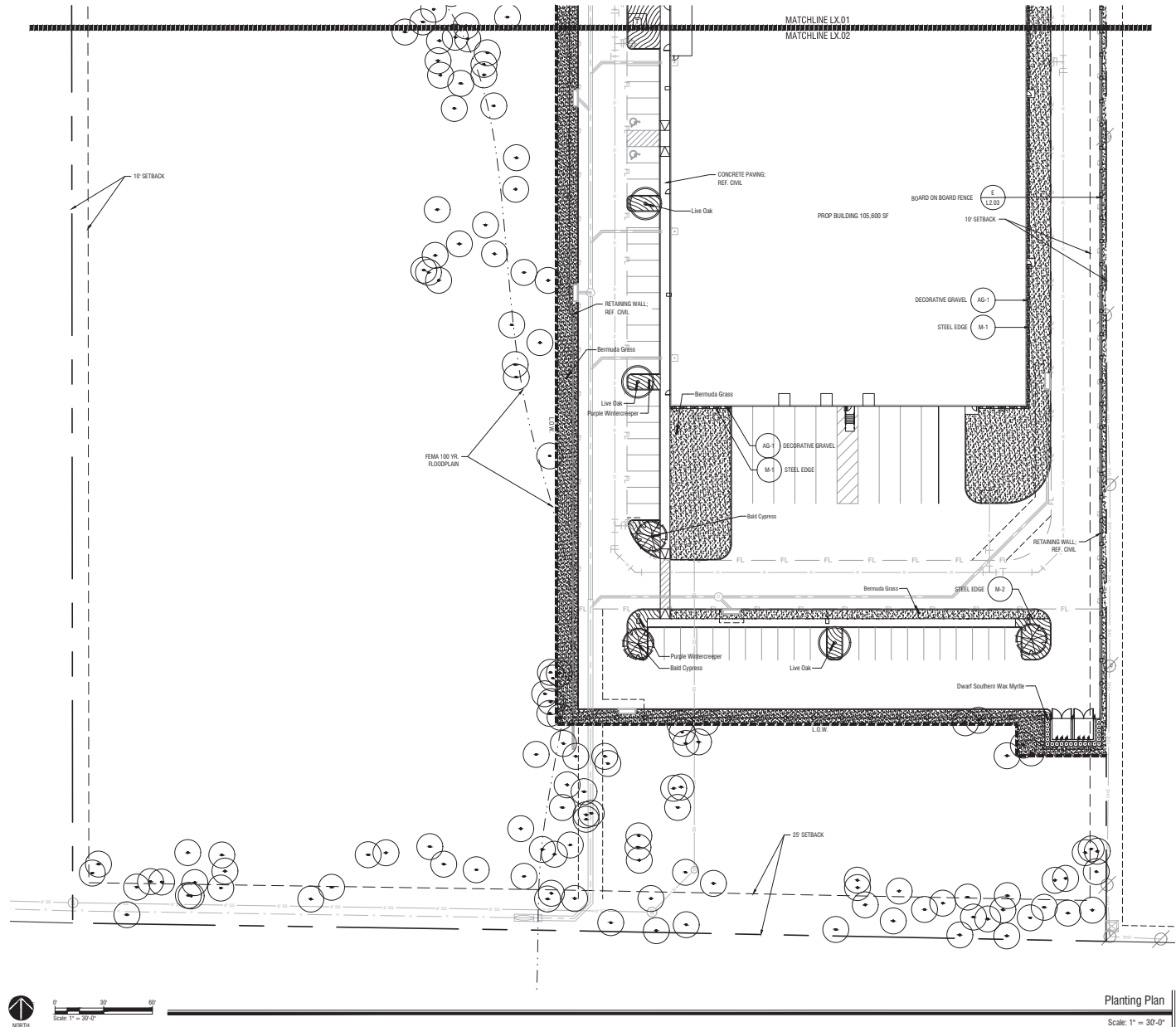
15. ALL PLANTING MATERIAL SHALL BE REPLACED WITH EQUIVALENT MATERIAL.

16. PLANTING AREAS TO A DEPTH OF 2" SHALL BE REPLACED WITH ORGANIC TOPSOIL, FILL.

17. ALL PLANTING MATERIAL SHALL BE REPLACED WITH EQUIVALENT MATERIAL.

18. NEIGHBOR TO BE MAINTAINED ACCESSIBILITY STANDARDS. THESE OVERLAPPING PUBLIC STREETS, DRIVE ALLEYS, AND SIDEWALKS SHALL BE MAINTAINED ACCESSIBLE.

19. CONTRACTOR TO PROVIDE 18 MONTH WARRANTY AFTER ALL CONSTRUCTION IS COMPLETE.



Planting Plan

Scale: 1" = 30'-0"

A

STEALTHBTS
WYLIE, TEXAS
PREPARED FOR
ARCO BUSINESS SERVICES

PLANTING PLAN

Kimley»Horn
© 2023 KIMLEY-HORN AND ASSOCIATES, INC.
260 EAST DAVIS STREET SUITE 100 MCKINNEY, TX 75069

PHONE: 469-301-2580 FAX: 972-239-3820
WWW.KINLEY-HORN.COM TX F-028

064464511	DATE	AS SHOWN	N.F.	N.F.	C.I.S.
	APRIL 2023		DESIGNED BY	DRAWN BY	CHECKED BY

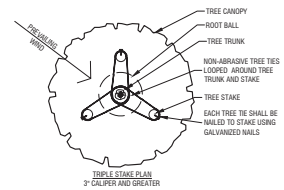
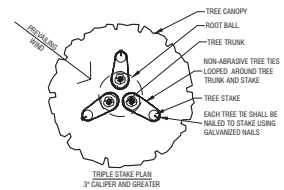
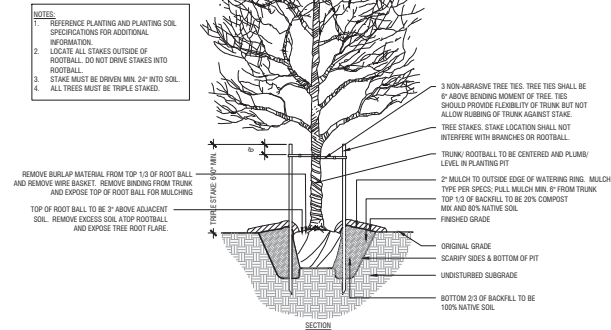
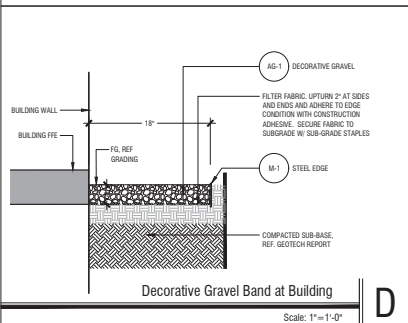
STEALTHBTS
WYLIE, TEXAS
PREPARED FOR
ARCO BUSINESS SERVICES

PLANTING PLAN

SHEET NUMBER
L2.02

	0	1	2	3	4	5	6	7	8	9	10	11	12	13	14	15	16	17	18	19	20	21	22	23	24	25	26	27	28	29	30	31	32	33	34	35	36	37	38	39	40	41	42	43	44	45	46	47	48	49	50	51	52	53	54	55	56	57	58	59	60	61	62	63	64	65	66	67	68	69	70	71	72	73	74	75	76	77	78	79	80	81	82	83	84	85	86	87	88	89	90	91	92	93	94	95	96	97	98	99	100	101	102	103	104	105	106	107	108	109	110	111	112	113	114	115	116	117	118	119	120	121	122	123	124	125	126	127	128	129	130	131	132	133	134	135	136	137	138	139	140	141	142	143	144	145	146	147	148	149	150	151	152	153	154	155	156	157	158	159	160	161	162	163	164	165	166	167	168	169	170	171	172	173	174	175	176	177	178	179	180	181	182	183	184	185	186	187	188	189	190	191	192	193	194	195	196	197	198	199	200	201	202	203	204	205	206	207	208	209	210	211	212	213	214	215	216	217	218	219	220	221	222	223	224	225	226	227	228	229	230	231	232	233	234	235	236	237	238	239	240	241	242	243	244	245	246	247	248	249	250	251	252	253	254	255	256	257	258	259	260	261	262	263	264	265	266	267	268	269	270	271	272	273	274	275	276	277	278	279	280	281	282	283	284	285	286	287	288	289	290	291	292	293	294	295	296	297	298	299	300	301	302	303	304	305	306	307	308	309	310	311	312	313	314	315	316	317	318	319	320	321	322	323	324	325	326	327	328	329	330	331	332	333	334	335	336	337	338	339	340	341	342	343	344	345	346	347	348	349	350	351	352	353	354	355	356	357	358	359	360	361	362	363	364	365	366	367	368	369	370	371	372	373	374	375	376	377	378	379	380	381	382	383	384	385	386	387	388	389	390	391	392	393	394	395	396	397	398	399	400	401	402	403	404	405	406	407	408	409	410	411	412	413	414	415	416	417	418	419	420	421	422	423	424	425	426	427	428	429	430	431	432	433	434	435	436	437	438	439	440	441	442	443	444	445	446	447	448	449	450	451	452	453	454	455	456	457	458	459	460	461	462	463	464	465	466	467	468	469	470	471	472	473	474	475	476	477	478	479	480	481	482	483	484	485	486	487	488	489	490	491	492	493	494	495	496	497	498	499	500	501	502	503	504	505	506	507	508	509	510	511	512	513	514	515	516	517	518	519	520	521	522	523
--	---	---	---	---	---	---	---	---	---	---	----	----	----	----	----	----	----	----	----	----	----	----	----	----	----	----	----	----	----	----	----	----	----	----	----	----	----	----	----	----	----	----	----	----	----	----	----	----	----	----	----	----	----	----	----	----	----	----	----	----	----	----	----	----	----	----	----	----	----	----	----	----	----	----	----	----	----	----	----	----	----	----	----	----	----	----	----	----	----	----	----	----	----	----	----	----	----	----	----	----	-----	-----	-----	-----	-----	-----	-----	-----	-----	-----	-----	-----	-----	-----	-----	-----	-----	-----	-----	-----	-----	-----	-----	-----	-----	-----	-----	-----	-----	-----	-----	-----	-----	-----	-----	-----	-----	-----	-----	-----	-----	-----	-----	-----	-----	-----	-----	-----	-----	-----	-----	-----	-----	-----	-----	-----	-----	-----	-----	-----	-----	-----	-----	-----	-----	-----	-----	-----	-----	-----	-----	-----	-----	-----	-----	-----	-----	-----	-----	-----	-----	-----	-----	-----	-----	-----	-----	-----	-----	-----	-----	-----	-----	-----	-----	-----	-----	-----	-----	-----	-----	-----	-----	-----	-----	-----	-----	-----	-----	-----	-----	-----	-----	-----	-----	-----	-----	-----	-----	-----	-----	-----	-----	-----	-----	-----	-----	-----	-----	-----	-----	-----	-----	-----	-----	-----	-----	-----	-----	-----	-----	-----	-----	-----	-----	-----	-----	-----	-----	-----	-----	-----	-----	-----	-----	-----	-----	-----	-----	-----	-----	-----	-----	-----	-----	-----	-----	-----	-----	-----	-----	-----	-----	-----	-----	-----	-----	-----	-----	-----	-----	-----	-----	-----	-----	-----	-----	-----	-----	-----	-----	-----	-----	-----	-----	-----	-----	-----	-----	-----	-----	-----	-----	-----	-----	-----	-----	-----	-----	-----	-----	-----	-----	-----	-----	-----	-----	-----	-----	-----	-----	-----	-----	-----	-----	-----	-----	-----	-----	-----	-----	-----	-----	-----	-----	-----	-----	-----	-----	-----	-----	-----	-----	-----	-----	-----	-----	-----	-----	-----	-----	-----	-----	-----	-----	-----	-----	-----	-----	-----	-----	-----	-----	-----	-----	-----	-----	-----	-----	-----	-----	-----	-----	-----	-----	-----	-----	-----	-----	-----	-----	-----	-----	-----	-----	-----	-----	-----	-----	-----	-----	-----	-----	-----	-----	-----	-----	-----	-----	-----	-----	-----	-----	-----	-----	-----	-----	-----	-----	-----	-----	-----	-----	-----	-----	-----	-----	-----	-----	-----	-----	-----	-----	-----	-----	-----	-----	-----	-----	-----	-----	-----	-----	-----	-----	-----	-----	-----	-----	-----	-----	-----	-----	-----	-----	-----	-----	-----	-----	-----	-----	-----	-----	-----	-----	-----	-----	-----	-----	-----	-----	-----	-----	-----	-----	-----	-----	-----	-----	-----	-----	-----	-----	-----	-----	-----	-----	-----	-----	-----	-----	-----	-----	-----	-----	-----	-----	-----	-----	-----	-----	-----	-----	-----	-----	-----	-----	-----	-----	-----	-----	-----	-----	-----	-----	-----	-----	-----	-----	-----	-----	-----	-----	-----	-----	-----	-----	-----	-----	-----	-----	-----	-----	-----

	0	1	2	3	4	5	6	7	8	9	10	11	12	13	14	15	16	17	18	19	20	21	22	23	24	25	26	27	28	29	30	31	32	33	34	35	36	37	38	39	40	41	42	43	44	45	46	47	48	49	50	51	52	53	54	55	56	57	58	59	60	61	62	63	64	65	66	67	68	69	70	71	72	73	74	75	76	77	78	79	80	81	82	83	84	85	86	87	88	89	90	91	92	93	94	95	96	97	98	99	100	101	102	103	104	105	106	107	108	109	110	111	112	113	114	115	116	117	118	119	120	121	122	123	124	125	126	127	128	129	130	131	132	133	134	135	136	137	138	139	140	141	142	143	144	145	146	147	148	149	150	151	152	153	154	155	156	157	158	159	160	161	162	163	164	165	166	167	168	169	170	171	172	173	174	175	176	177	178	179	180	181	182	183	184	185	186	187	188	189	190	191	192	193	194	195	196	197	198	199	200	201	202	203	204	205	206	207	208	209	210	211	212	213	214	215	216	217	218	219	220	221	222	223	224	225	226	227	228	229	230	231	232	233	234	235	236	237	238	239	240	241	242	243	244	245	246	247	248	249	250	251	252	253	254	255	256	257	258	259	260	261	262	263	264	265	266	267	268	269	270	271	272	273	274	275	276	277	278	279	280	281	282	283	284	285	286	287	288	289	290	291	292	293	294	295	296	297	298	299	300	301	302	303	304	305	306	307	308	309	310	311	312	313	314	315	316	317	318	319	320	321	322	323	324	325	326	327	328	329	330	331	332	333	334	335	336	337	338	339	340	341	342	343	344	345	346	347	348	349	350	351	352	353	354	355	356	357	358	359	360	361	362	363	364	365	366	367	368	369	370	371	372	373	374	375	376	377	378	379	380	381	382	383	384	385	386	387	388	389	390	391	392	393	394	395	396	397	398	399	400	401	402	403	404	405	406	407	408	409	410	411	412	413	414	415	416	417	418	419	420	421	422	423	424	425	426	427	428	429	430	431	432	433	434	435	436	437	438	439	440	441	442	443	444	445	446	447	448	449	450	451	452	453	454	455	456	457	458	459	460	461	462	463	464	465	466	467	468	469	470	471	472	473	474	475	476	477	478	479	480	481	482	483	484	485	486	487	488	489	490	491	492	493	494	495	496	497	498	499	500	501	502	503	504	505	506	507	508	509	510	511	512	513	514	515	516	517	518	519	520	521	522	523
--	---	---	---	---	---	---	---	---	---	---	----	----	----	----	----	----	----	----	----	----	----	----	----	----	----	----	----	----	----	----	----	----	----	----	----	----	----	----	----	----	----	----	----	----	----	----	----	----	----	----	----	----	----	----	----	----	----	----	----	----	----	----	----	----	----	----	----	----	----	----	----	----	----	----	----	----	----	----	----	----	----	----	----	----	----	----	----	----	----	----	----	----	----	----	----	----	----	----	----	----	-----	-----	-----	-----	-----	-----	-----	-----	-----	-----	-----	-----	-----	-----	-----	-----	-----	-----	-----	-----	-----	-----	-----	-----	-----	-----	-----	-----	-----	-----	-----	-----	-----	-----	-----	-----	-----	-----	-----	-----	-----	-----	-----	-----	-----	-----	-----	-----	-----	-----	-----	-----	-----	-----	-----	-----	-----	-----	-----	-----	-----	-----	-----	-----	-----	-----	-----	-----	-----	-----	-----	-----	-----	-----	-----	-----	-----	-----	-----	-----	-----	-----	-----	-----	-----	-----	-----	-----	-----	-----	-----	-----	-----	-----	-----	-----	-----	-----	-----	-----	-----	-----	-----	-----	-----	-----	-----	-----	-----	-----	-----	-----	-----	-----	-----	-----	-----	-----	-----	-----	-----	-----	-----	-----	-----	-----	-----	-----	-----	-----	-----	-----	-----	-----	-----	-----	-----	-----	-----	-----	-----	-----	-----	-----	-----	-----	-----	-----	-----	-----	-----	-----	-----	-----	-----	-----	-----	-----	-----	-----	-----	-----	-----	-----	-----	-----	-----	-----	-----	-----	-----	-----	-----	-----	-----	-----	-----	-----	-----	-----	-----	-----	-----	-----	-----	-----	-----	-----	-----	-----	-----	-----	-----	-----	-----	-----	-----	-----	-----	-----	-----	-----	-----	-----	-----	-----	-----	-----	-----	-----	-----	-----	-----	-----	-----	-----	-----	-----	-----	-----	-----	-----	-----	-----	-----	-----	-----	-----	-----	-----	-----	-----	-----	-----	-----	-----	-----	-----	-----	-----	-----	-----	-----	-----	-----	-----	-----	-----	-----	-----	-----	-----	-----	-----	-----	-----	-----	-----	-----	-----	-----	-----	-----	-----	-----	-----	-----	-----	-----	-----	-----	-----	-----	-----	-----	-----	-----	-----	-----	-----	-----	-----	-----	-----	-----	-----	-----	-----	-----	-----	-----	-----	-----	-----	-----	-----	-----	-----	-----	-----	-----	-----	-----	-----	-----	-----	-----	-----	-----	-----	-----	-----	-----	-----	-----	-----	-----	-----	-----	-----	-----	-----	-----	-----	-----	-----	-----	-----	-----	-----	-----	-----	-----	-----	-----	-----	-----	-----	-----	-----	-----	-----	-----	-----	-----	-----	-----	-----	-----	-----	-----	-----	-----	-----	-----	-----	-----	-----	-----	-----	-----	-----	-----	-----	-----	-----	-----	-----	-----	-----	-----	-----	-----	-----	-----	-----	-----	-----	-----	-----	-----	-----	-----	-----	-----	-----	-----	-----	-----	-----	-----	-----	-----	-----	-----	-----	-----	-----	-----	-----	-----	-----	-----	-----	-----	-----	-----	-----	-----	-----	-----	-----	-----	-----	-----	-----	-----	-----	-----	-----	-----	-----	-----	-----

[illegible]

Kimley»»Horn
© 2023 KIMLEY-HORN AND ASSOCIATES, INC.
260 EAST DAVIS STREET, SUITE 100, MCKINNEY, TX 75069
PHONE: 469-301-6260 FAX: 972-239-3820
WWW.KIMLEY-HORN.COM TX #428

KHA PROJECT	DATE	SCALE	AS SHOWN
064464511	APRIL 2023	DESIGNED BY	NJP
		DRAWN BY	NJP
		CHECKED BY	CLS

STEALTHBTS
WYLIE, TEXAS
PREPARED FOR
ARCO BUSINESS SERVICES

PLANTING DETAILS

SHEET NUMBER
L2.03

No.	REVISIONS	DATE	BY
-----	-----------	------	----

CLS

CHECKED BY

--	--