

CITY OF
WYLIE

Dog Park & Splashpads

Site Evaluation

April 26, 2022





Project Schedule



Site Evaluation & Programming March – April

- ✓ *Kick-Off Meeting & Site Reviews*
- ✓ *Programming & Site Evaluation*
- ✓ *City Council Update*

Topographic Survey May

Schematic Design..... June - July

- ☐ *Layout Plans for All 3 Site w/ Cost Opinions*
- ☐ *Review w/ City Staff*

Design Development..... July - August

- ☐ *50% CDs & Cost Opinion*

Final Construction Documents..... Sept. – Nov.

Bidding & Construction Phase TBD

Potential Openings*

Splashpads: Summer 2023

Dog Park: Fall 2023

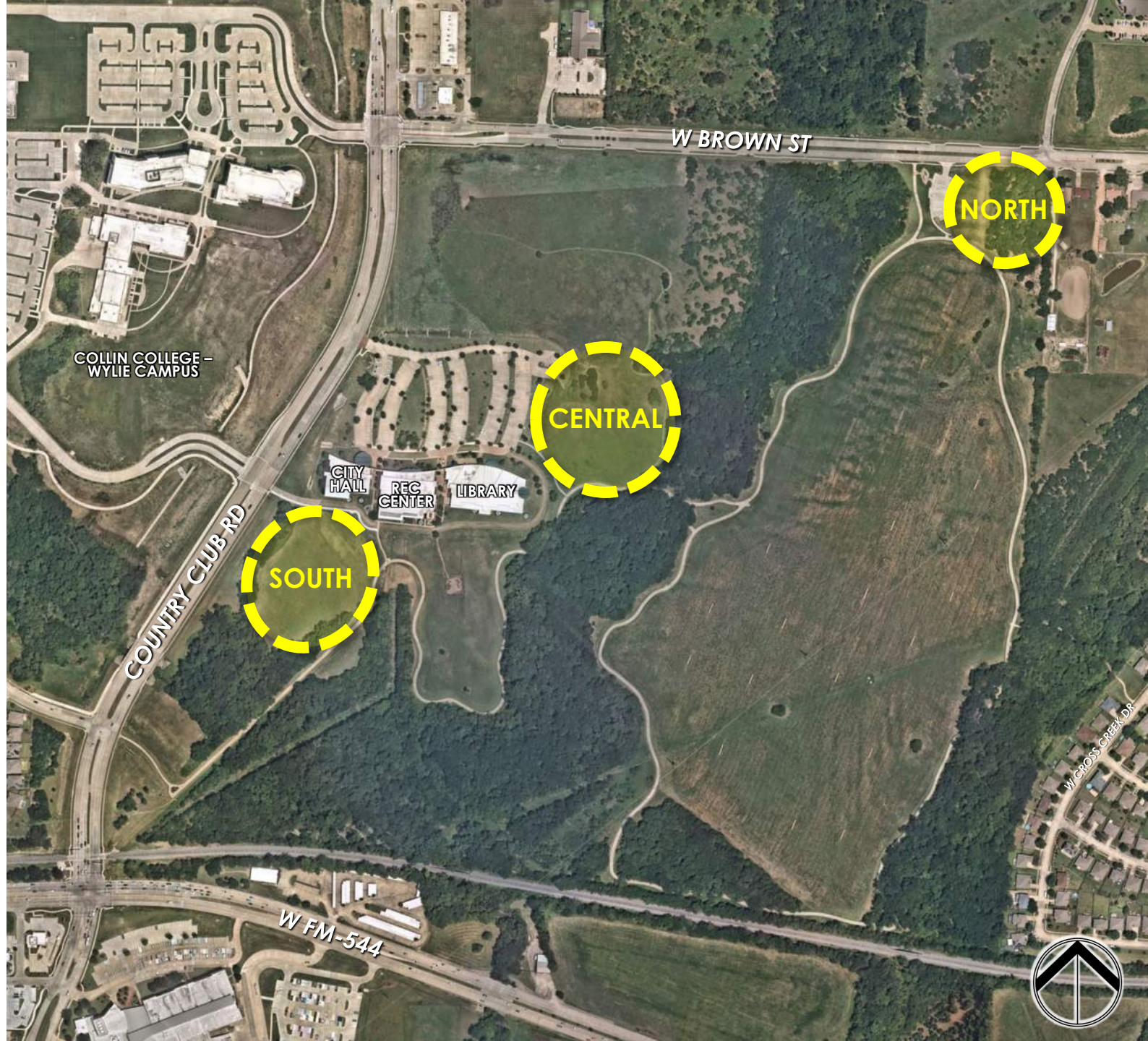




Dog Park

Municipal Complex

	SOUTH	CENTRAL	NORTH
Adequate Parking Nearby	1	3	2
Available Restrooms	1	1	0
Accessibility / Connectivity	1	3	3
Sun vs Shade	3	3	2
Topography / Drainage	2	3	2
Security / Visibility	2	3	3
Expansion / Phasing Opportunity	0	2	3
Proximity to Existing Utilities	1	2	3
Adequate Acreage for Paddocks	3	3	1
Compatibility with Adjacent Uses	1	3	0
	15	26	19



Recommended Location



Trail Network Connectivity ①



Open Meadow ②

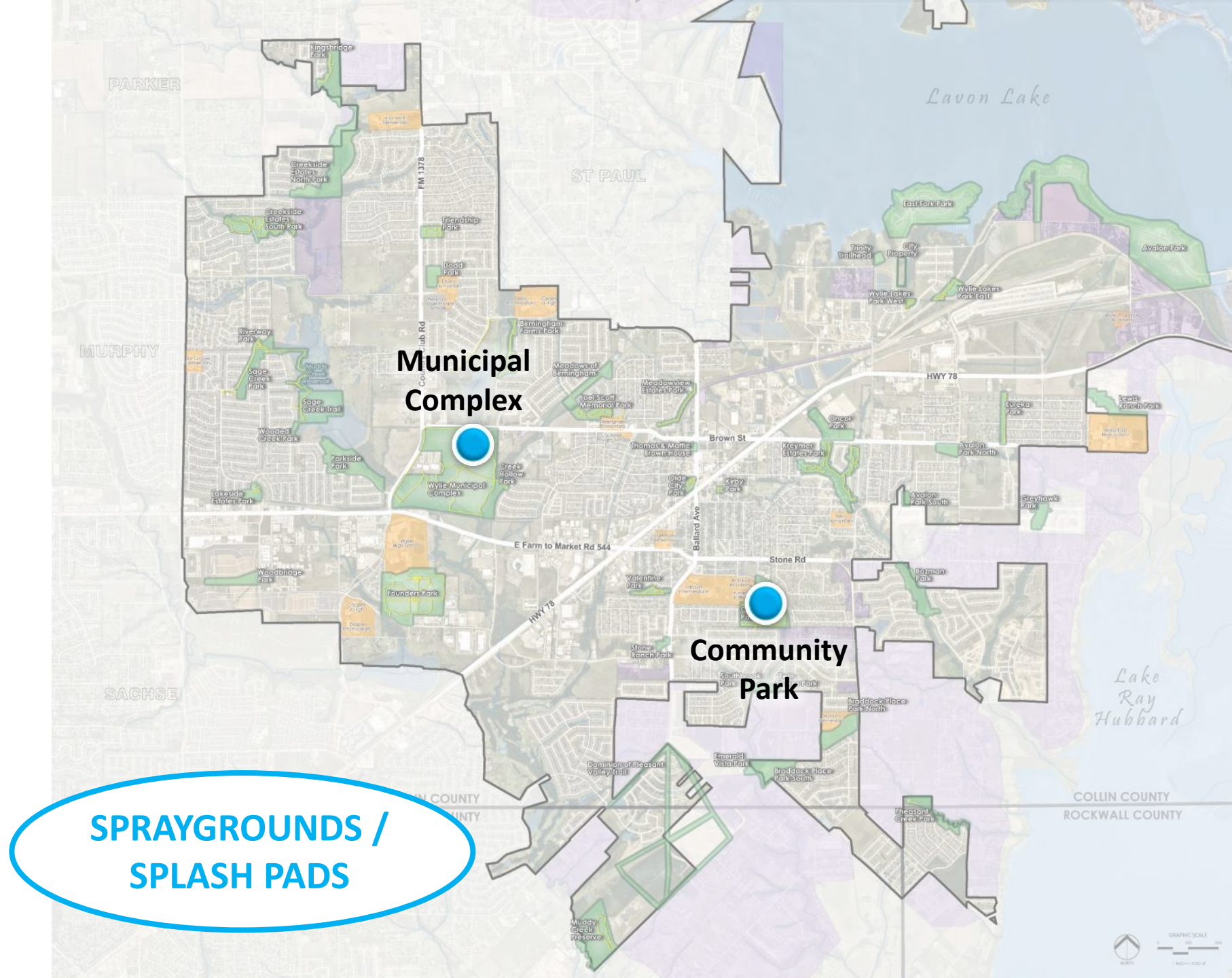


View from Adjacent Parking ③



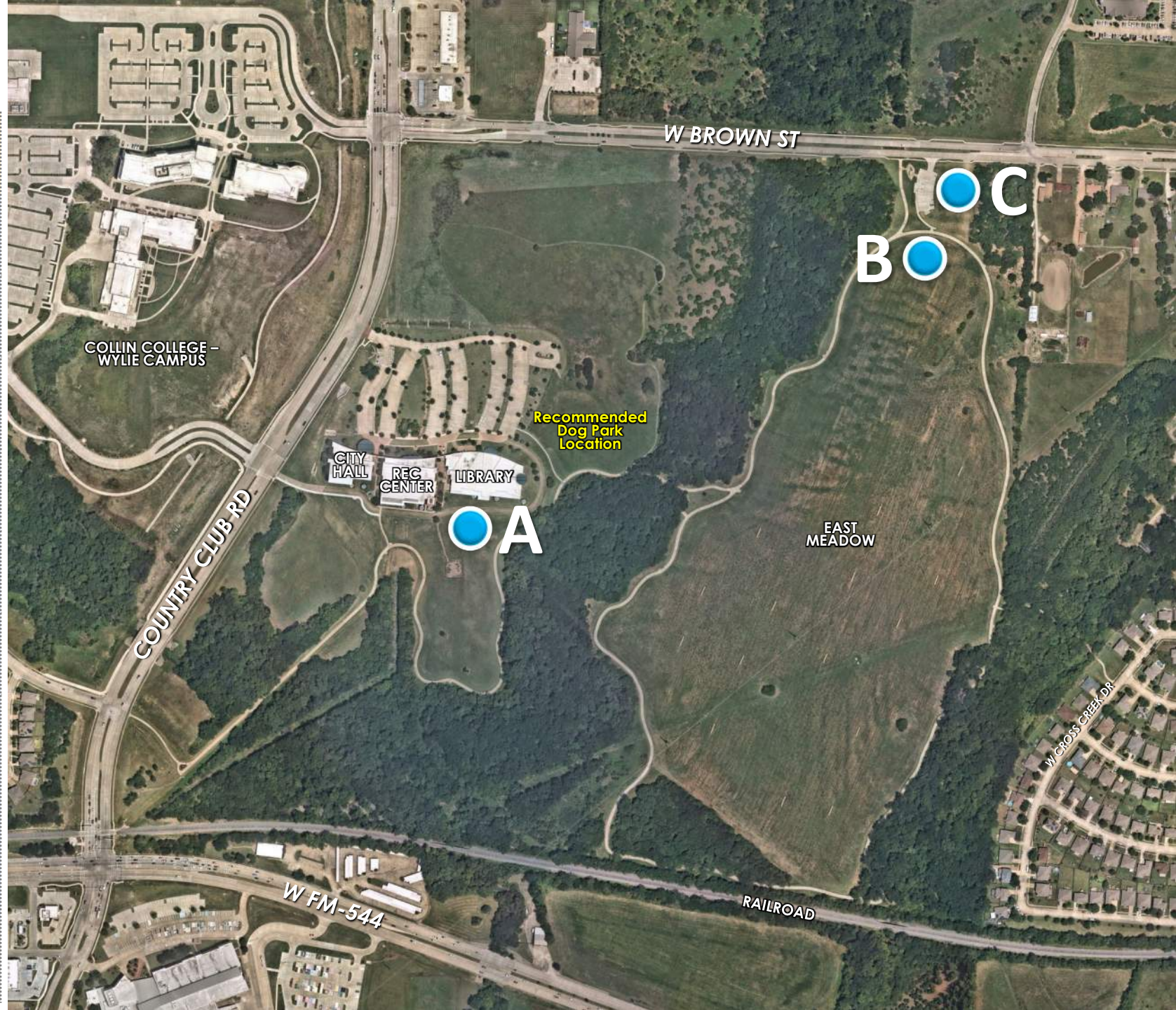
A photograph of a person splashing in water, with a dark blue overlay. The person's head and shoulders are visible, and they are surrounded by white water spray. The background is a deep blue, and the overall image has a grainy, artistic quality.

Splashpads



Municipal Complex

	A	B	C
Parking	1	2	1
Topography / Drainage	1	3	2
Proximity to Existing Utilities	1	2	3
Accessibility / Connectivity	1	3	2
Maintenance Access	1	3	3
Security / Visibility	1	2	3
Expansion / Phasing Opportunity	3	3	1
Compatibility with Adjacent Uses	0	3	2
	9	21	17



Recommended Location – Site B



East Meadow ①



East Meadow ②



Adjacent Parking ③



Community Park

	A	B	C
Parking	2	1	2
Topography / Drainage	3	1	2
Proximity to Existing Utilities	2	2	3
Accessibility / Connectivity	1	2	3
Maintenance Access	3	1	3
Security / Visibility	3	3	3
Expansion / Phasing Opportunity	1	1	2
Proximity to Adjacent Uses	1	3	3
	16	14	21



Recommended Location – Site C



View from Potential Drop-Off ①



Basketball Court ②



View of Playground ③





Next Steps



Site Evaluation & Programming **March – April**

- ✓ *Kick-Off Meeting & Site Reviews*
- ✓ *Programming & Site Evaluation*
- ✓ *City Council Update*

Topographic Survey **May**

Schematic Design..... **June - July**

- ☐ *Layout Plans for All 3 Site w/ Cost Opinions*
- ☐ *Review w/ City Staff*

Design Development..... **July - August**

- ☐ *50% CDs & Cost Opinion*

Final Construction Documents..... **Sept. – Nov.**

Bidding & Construction Phase **TBD**

Potential Openings*

Splashpads: Summer 2023

Dog Park: Fall 2023

