

GENERAL NOTES

1. ALL NEW PAINT WORK MUST INCLUDE A 2 YEAR FULL WARRANTY AND A YEAR PRO-RATED LABOR AND MATERIALS WARRANTY.
2. ALL PAINT COLOR SELECTIONS TO BE VERIFIED WITH OWNER'S CONSTRUCTION MANAGER BEFORE ORDERING.
3. TOP OF PARAPET TO BE CLAD WITH UNGLAZED COPING. FINAL SELECTION TO BE VERIFIED WITH OWNER'S CONSTRUCTION MANAGER.
4. ALL PREFABRICATED CANOPY SYSTEMS TO BE FIELD VERIFIED BEFORE FABRICATION.
5. ALL WALL MOUNTED EQUIPMENT SUCH AS ELECTRICAL METERS, IRRIGATION METERS, PHONE/CABLE BOXES, EXTERNAL VENTS AND LOUVERS, ETC., SHALL BE PAINTED TO MATCH THE WALL ON WHICH IT IS MOUNTED OR OTHERWISE CONSISTENT WITH THE COLOR(S) OF THE BUILDING.

CONSTRUCTION NOTES

1. PIPE BOLLARD - SEE SITE PLAN.
2. HARD COAT STUCCO WITH MEDIUM SAND FINISH - SEE WALL SECTIONS.
3. HARD COAT STUCCO CONTROL JOINT.
4. OUTLINE OF MECHANICAL EQUIPMENT BEYOND.
5. APPROXIMATE LINE OF ROOF SURFACE BEYOND.
6. SLOPED ROOF SURFACE.
7. CLEAR ANODIZED ALUMINUM BREAK METAL BETWEEN STOREFRONT WINDOWS.
8. CONTINUOUS METAL ROOF EDGE OR DRIP FLASHING - SEE WALL SECTIONS.
9. CONTINUOUS METAL EDGE FLASHING.
10. CONTINUOUS METAL DRIPS FLASHING - SEE DETAIL 2/A501.
11. PRE-FABRICATED HANGER ROD CANOPY SYSTEM SUPPLIED BY SIGN VENDOR, INSTALLED BY GENERAL CONTRACTOR - SEE WALL SECTIONS.
12. KNOX BOX MOUNTED AT 4'-6\"/>

EXTERIOR FINISH SCHEDULE

1. PREFINISHED ALUMINUM EDGE FLASHING - COLOR - RED - SW686 HEARTHROB
2. METAL FASCIA/ BRAKE METAL WRAP - MILL FINISH - CLEAR COAT
3. PREFINISHED ALUMINUM EDGE OR DRIP FLASHING - COLOR - BLACK - SW693 BLACK OF NIGHT
4. HARD COAT STUCCO - PAREX - STYLE: MEDIUM SAND FINISH - COLOR - GRAY - SW 6002 ESSENTIAL GRAY
5. HARD COAT STUCCO - PAREX - STYLE: MEDIUM SAND FINISH - COLOR - BLACK - SW693 BLACK OF NIGHT
6. HARD COAT STUCCO - PAREX - STYLE: MEDIUM SAND FINISH - COLOR - RED - PMS 20-069 TYP ONEY APPLE RED
7. HARD COAT STUCCO - PAREX - STYLE: MEDIUM SAND FINISH - COLOR - WHITE - SW7005 PURE WHITE
8. ALUMINUM STOREFRONT MILL FINISHED - COLOR: CLEAR COAT

* REFER TO THE MOST CURRENT HWY 55 BRAND BOOK FOR ALL INTERIOR AND EXTERIOR COLORS - VERIFY ALL FINISHES WITH OWNER PRIOR TO PURCHASING

LMIT Project No. 21337

THIS DRAWING IS THE PROPERTY OF INRBD ARCHITECTS & ENGINEERS. IT IS TO BE USED ONLY FOR THE PROJECT AND SITE SPECIFICALLY IDENTIFIED HEREON. IT IS NOT TO BE REPRODUCED, COPIED, OR TRANSMITTED IN ANY FORM OR BY ANY MEANS, ELECTRONIC OR MECHANICAL, WITHOUT THE WRITTEN PERMISSION OF INRBD ARCHITECTS & ENGINEERS.

INRBD
ARCHITECTS & ENGINEERS
10000 W. ME Blvd., Suite 200
Dallas, Texas 75241
PH: 214.444.7222
FAX: 214.444.7223
A Division of LMIT Associates

PRELIMINARY NOT FOR
CONSTRUCTION

PROJECT: **HIGHWAY 55**
30 PROTOTYPE
2014 NORTH HWY 55
WYLE, TEXAS 75086
DRAWING: EXTERIOR ELEVATIONS

Revisions

THRU ADDENDUM "A"
REVISION DATE

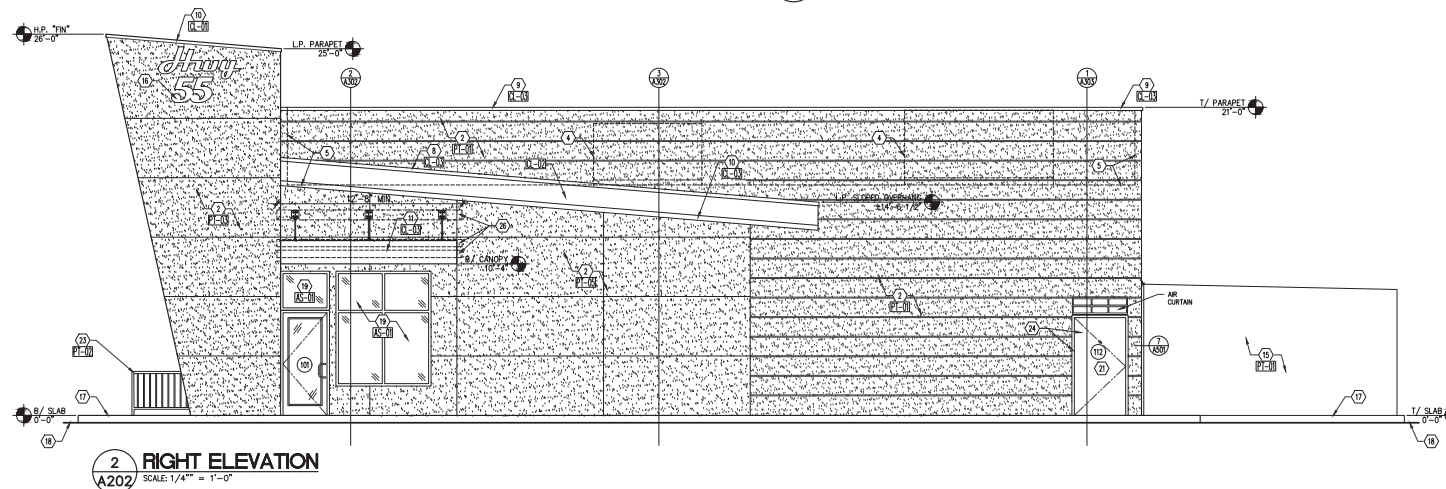
PROJECT DATE
03/15/2022

Drawn By
CH

Checked By
GRL

Sheet No.

A201



[illegible]



PERSPECTIVE VIEW 1



PERSPECTIVE VIEW 2

		OPTION B			EXTERIOR FACADE ::
		10.8.21	PERSPECTIVE VIEWS		EXTERIOR CONCEPT ::



FRONT ELEVATION





RIGHT ELEVATION



LEFT ELEVATION



BACK ELEVATION

	<p>NRD-21208</p> 	<p>OPTION B</p>		<p>EXTERIOR FACADE ::</p>	
		<p>10.8.21</p>	<p>FLAT ELEVATIONS</p>	<p>EXTERIOR CONCEPT ::</p>	