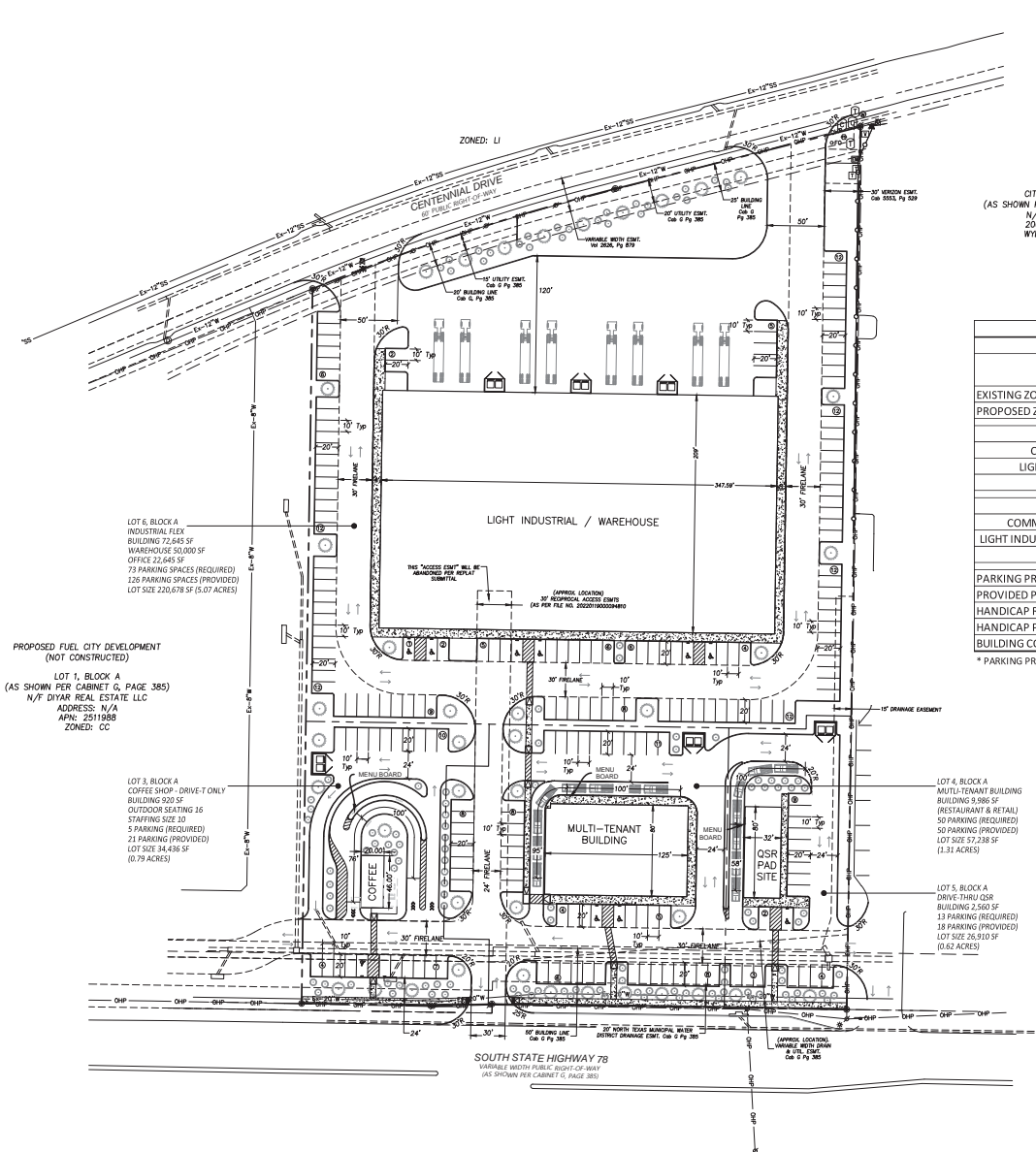
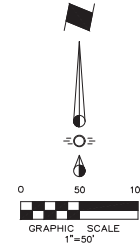


# Exhibit B



CITY HALL OF WYLIE  
(AS SHOWN PER CABINET G, PAGE 385)  
N/F WYLIE CITY OF  
2000 N. STATE HWY  
WYLIE, TEXAS 75098  
APN: 2817062  
ZONED: CC



SITE DATA TABLE				
LOT SIZE	LOT 3	LOT 4	LOT 5	LOT 6
	0.791 ACRES 34,436.35 SF	1.314 ACRES 57,238.38 SF	0.618 ACRES 26,910.12 SF	5.066 ACRES 220,677.81 SF
EXISTING ZONING	CC	CC	CC	CC
PROPOSED ZONING	PD	PD	PD	PD
USE / BUILDING AREA				
COMMERCIAL	920 SF - 100%	9,986 SF - 100%	2,560 SF - 100%	SF - 0%
LIGHT INDUSTRIAL	SF - 0%	SF - 0%	SF - 0%	72,645 SF - 100%
TOTAL	920 SF	9,986 SF	2,560 SF	72,645 SF
REQUIRED PARKING				
COMMERCIAL (1 PER 200 S.F.)	5 SPACES	50 SPACES	13 SPACES	0 SPACES
LIGHT INDUSTRIAL (1 PER 1000 S.F.)	0 SPACES	0 SPACES	0 SPACES	73 SPACES
TOTAL	5 SPACES	50 SPACES	13 SPACES	73 SPACES
PARKING PROVIDED	21 SPACES	50 SPACES	18 SPACES	126 SPACES
PROVIDED PARKING RATIO	1/44	1/200	1/143	1/577
HANDICAP REQUIRED	1 SPACES	2 SPACES	1 SPACES	5 SPACES
HANDICAP PROVIDED	1 SPACES	2 SPACES	1 SPACES	6 SPACES
BUILDING COVERAGE	2.67%	17.45%	9.51%	32.92%

\* PARKING PROVIDED TOTAL INCLUDES HC PARKING

**ENGINEER:**  
Cross Engineering Consultants, Inc.  
1720 W. Virginia Street  
McKinney, Texas 75069  
Phone (972) 562-4409  
Fax (972) 562-4471  
Contact: Jon David Cross, P.E.  
JDC@CrossEngineering.biz

**ARCHITECT:**  
JAW Architects, Inc.  
1620 Yukon Drive  
Burleson, Texas 76028  
Phone (817) 705-3387  
Contact: Jeremy Williams  
jeremy@jaw-arc.com

**SURVEYOR:**  
BLEW & ASSOCIATES, P.A.  
3825 N. SHILOH DRIVE  
FAYETTEVILLE, AR 72703  
Phone (479) 443-4506  
Fax (479) 582-1883  
Contact: BRADLEY G. WELLS  
survey@blewinc.com

**APPLICANT/DEVELOPER:**  
SLATE LAND & DEVELOPMENT CO., LLC  
5729 LEBANON RD. #1400  
FRISCO, TEXAS 75034  
Phone (214) 718-2626  
Contact: KRIS@SLATECOMMERCIAL.COM

**OWNER:**  
DIYAR REAL ESTATE, LLC.  
1717 MAIN ST. #1400  
DALLAS, TEXAS 75201  
Phone (972) 799-2832  
Contact: AHMED HUSSEIN  
AHMED0516@HOTMAIL.COM

Issue Dates	Revision & Date
1	1
2	2
3	3
4	4
5	5
6	6

<b>CROSS ENGINEERING CONSULTANTS</b>	
1731 W. Virginia Street McKinney, Texas 75069 972.562.4409	McKinney, Texas 75069 Texas P.E. Firm No. 5-9103 NO. 520518
Drawn By: C.E.C.L.	Checked By: C.E.C.L.
Scale: 1"=50'	

THIS DOCUMENT IS  
RELEASED FOR THE  
PURPOSE OF INTERIM  
REVIEW UNDER THE  
AUTHORITY OF JON  
DAVID CROSS, P.E.  
ON 3/14/22  
IT IS NOT TO BE USED  
FOR CONSTRUCTION  
PURPOSES.

ZONING EXHIBIT	
WYLIE BUSINESS PARK & SHOPS BY SLATE	
SLATE LAND & DEVELOPMENT CO., LLC	
WYLIE, TEXAS	

Sheet No.  
**ZE**  
Project No.  
22007