



Kimley»Horn

Wylie Downtown – Phase 1

Council Meeting

June 25, 2024

Agenda

- Project History
- Phase 1 - Project Overview
- Progress to Date
- Review Lane Configuration Options
- Next Steps

Project History

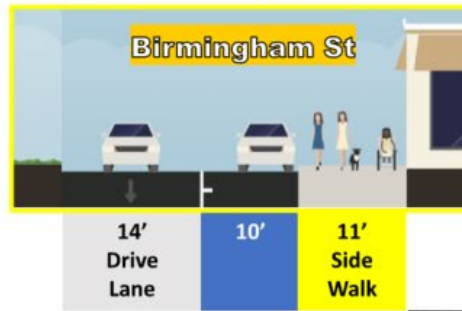
- Fall of 2022 – Council approved a traffic study for Downtown Wylie
- The study focused on converting Ballard Ave & Birmingham St from two-way to one-way
- The study included recommendations for:
 - Traffic Signals
 - Parking
 - Signage
 - Wayfinding
 - Lane geometry
- Next steps included selecting a consultant and moving forward with the design of Phase 1

Traffic Study Recommendations

Option 4a-4: Birmingham-Ballard One-Way

North Transition via Brown & South Transition via College with Parallel Parking

One-Way SB Traffic (w/ Parallel Parking)



Two-Way Traffic (w/ Parallel Parking)







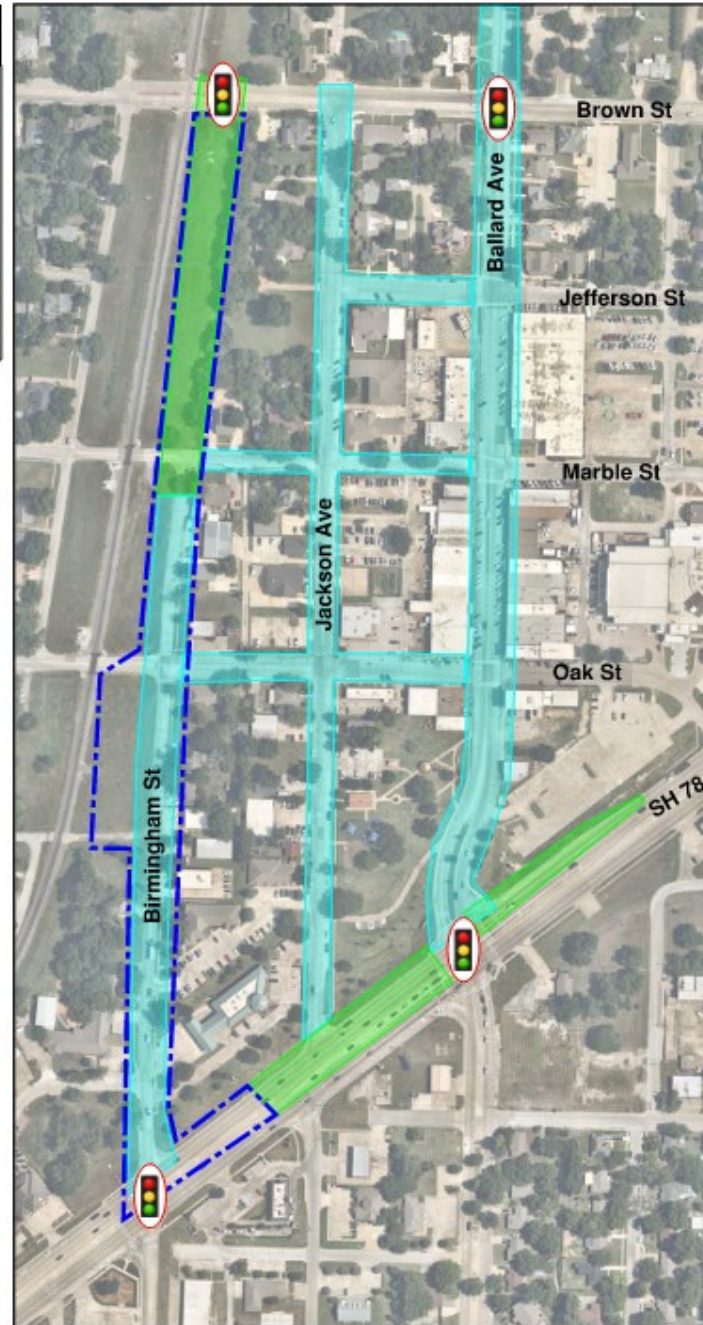
One-Way Northbound Traffic (w/ Parallel Parking)



Phase 1

Legend

-  Paving/Sidewalk
-  Signing & Striping/Wayfinding
-  Drainage Design
-  Traffic Signal Modifications



Stakeholder Meetings

- The initial part of the project includes a Downtown Implementation Strategy
- The Downtown Implementation Strategy includes recommendations for overall design character, streetscape improvements, mobility and safety improvements.

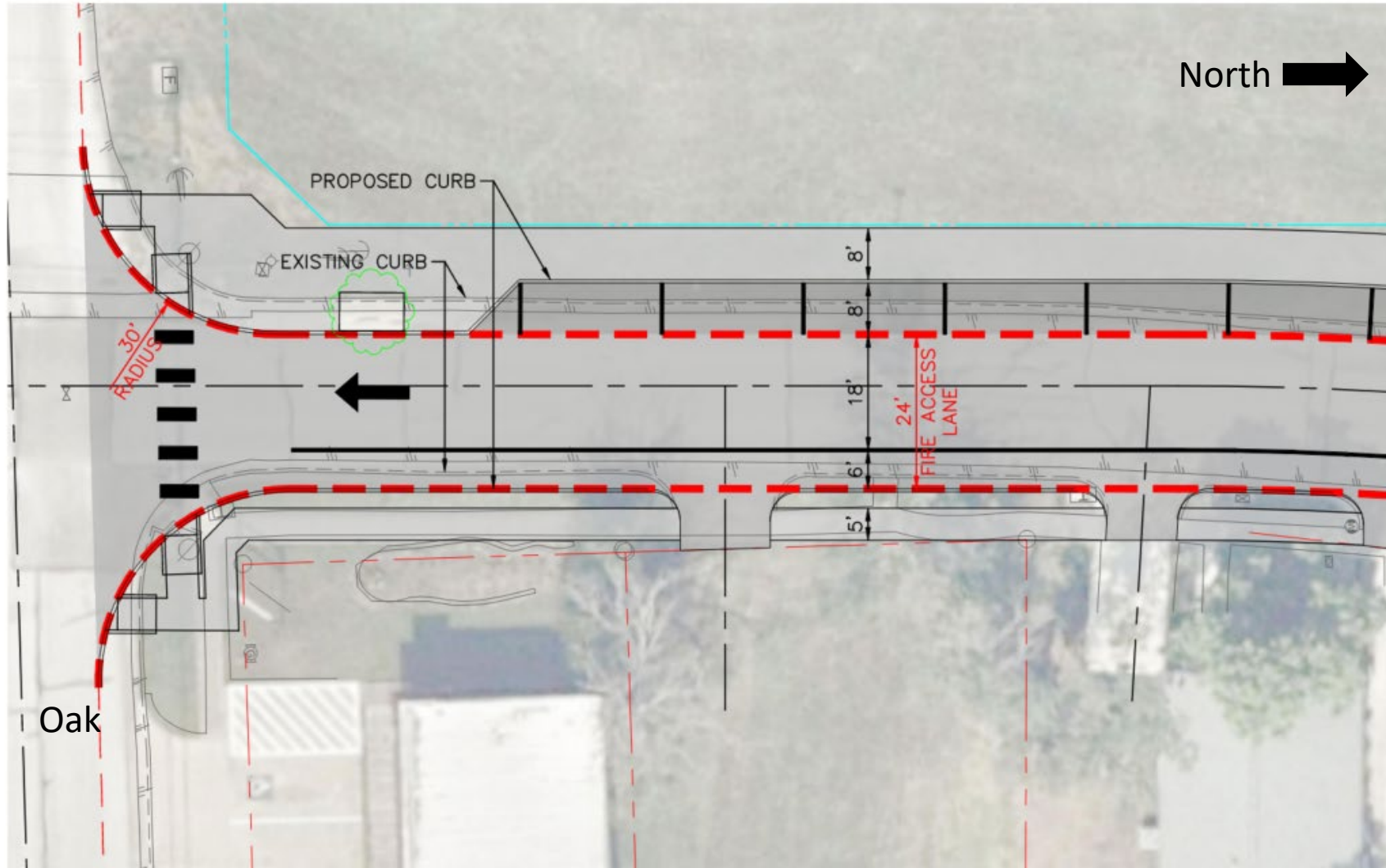


Fire Department Coordination

- Project team met with fire department on May 15th to present lane geometry with a single travel lane (15-16 feet) in each direction on Ballard & Birmingham
- Unique one-way, one travel lane is new to Wylie
- Fire department requires 24 – 26 feet of pavement per International Fire Code
- As a result of this meeting, the project team developed alternatives for consideration that satisfy fire requirements

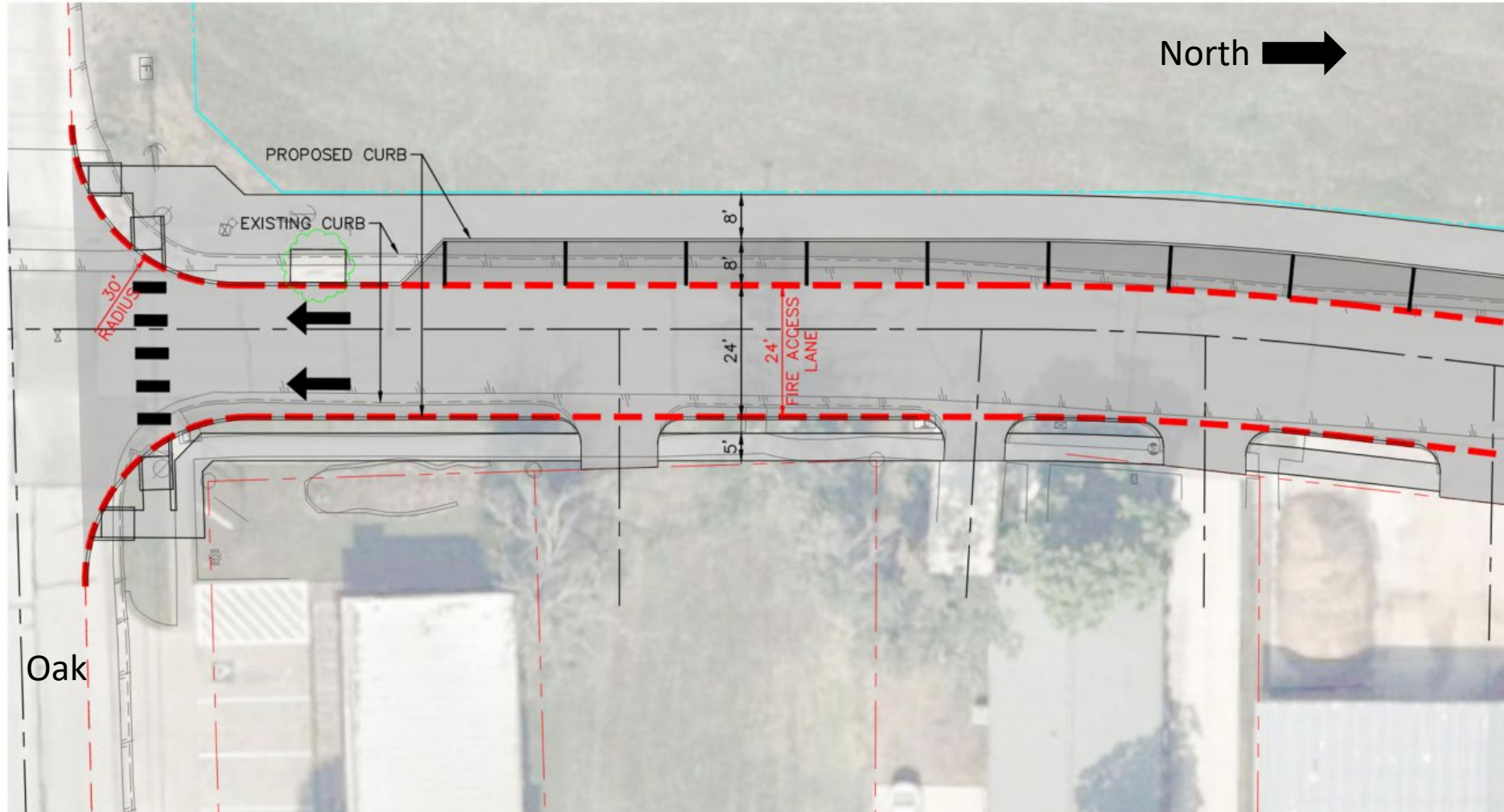
Birmingham Street Option #1

OPTION #1: One Travel Lane w/ Bike Lane



Birmingham Street Option #2

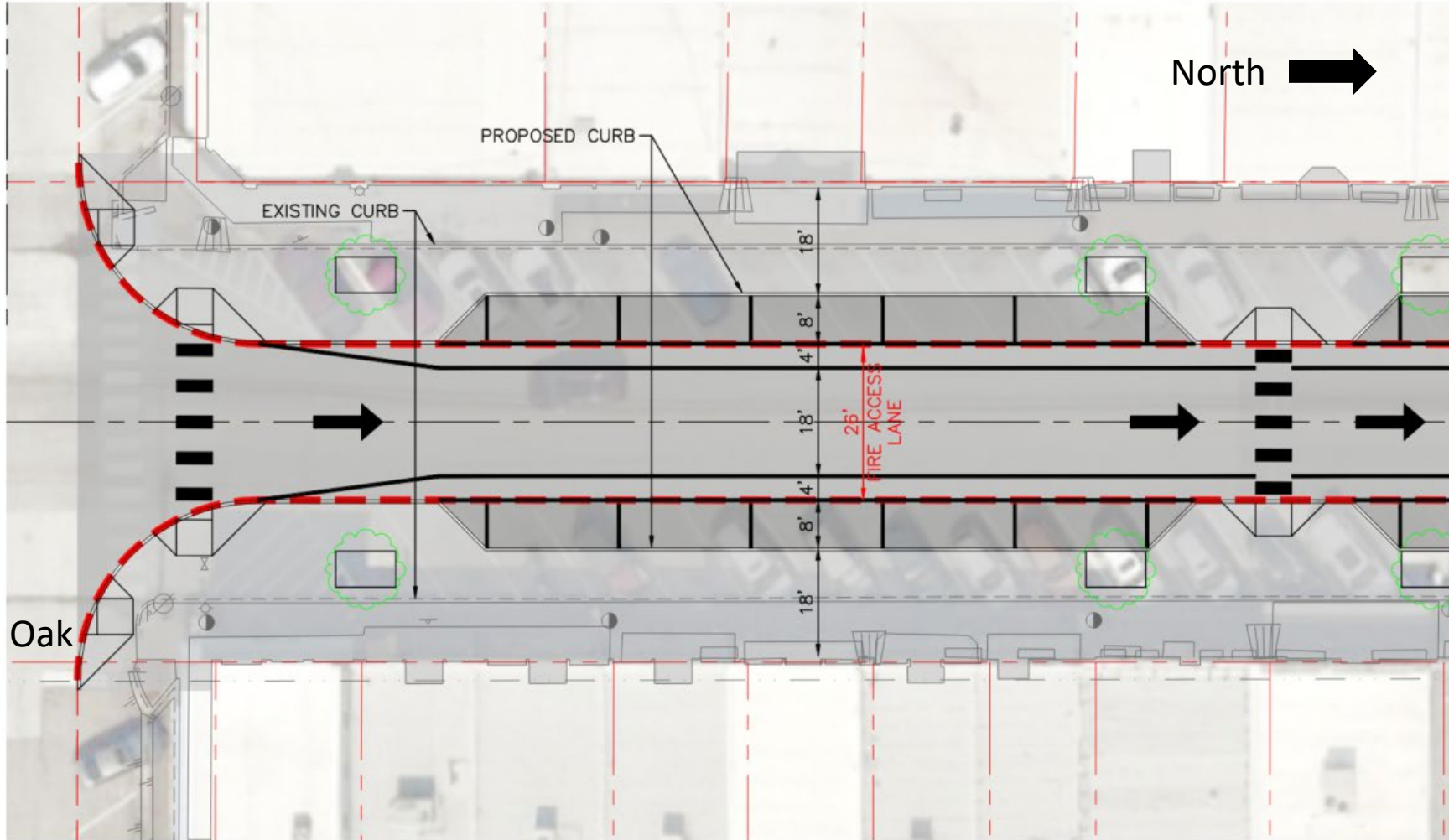
OPTION #2: Two Travel Lanes



Ballard Avenue Option #1

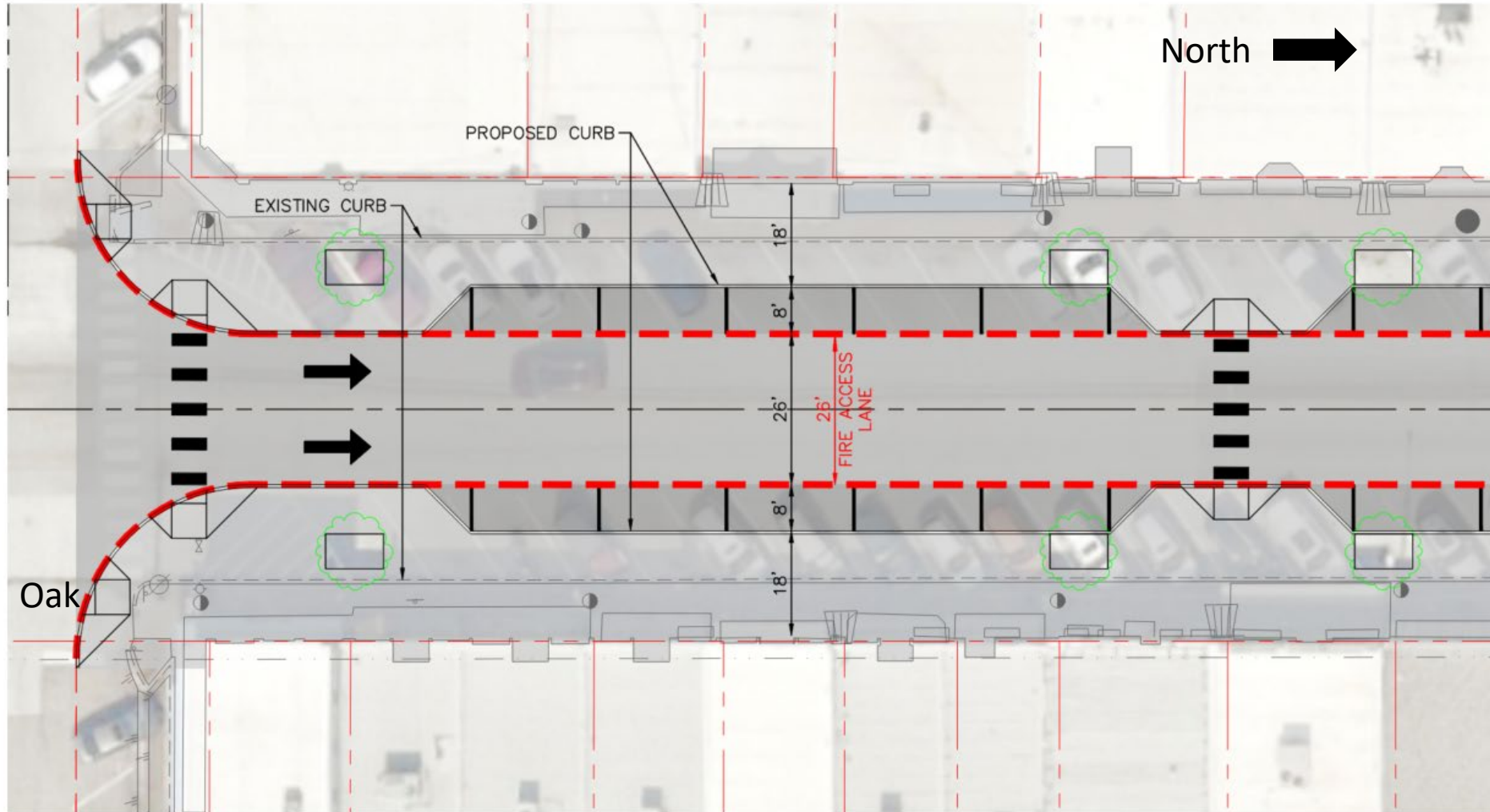
OPTION #1:

One Travel Lane w/ Buffer

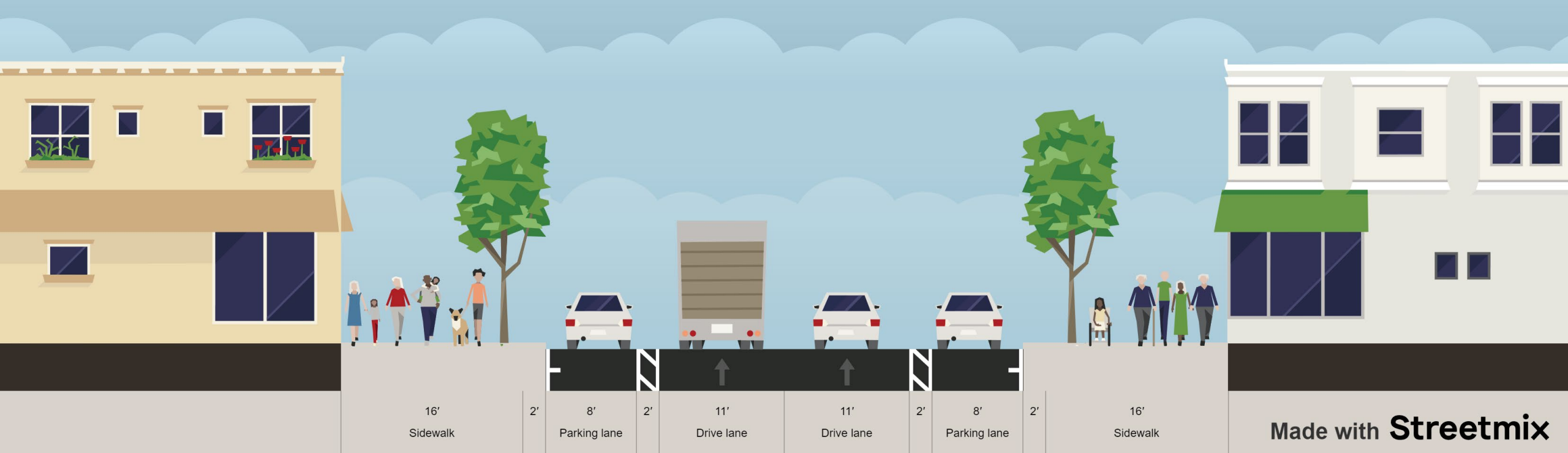


Ballard Avenue Option #2

OPTION #2: Two Travel Lanes



Ballard Avenue Street Section



Discussion