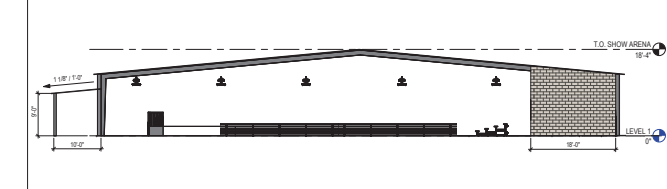
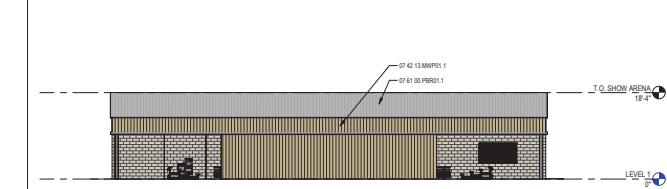


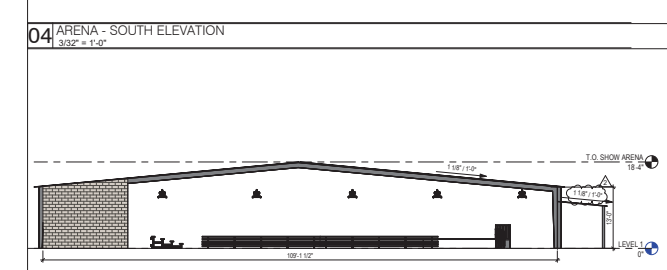
06 LEVEL 1 - AREA E - ENLARGED RESTROOM PLAN
1/4" = 1'-0"



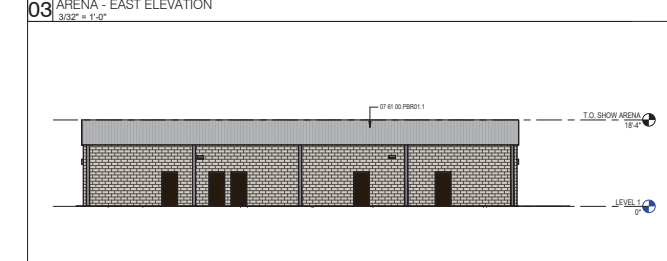
05 ARENA - WEST ELEVATION
3/32" = 1'-0"



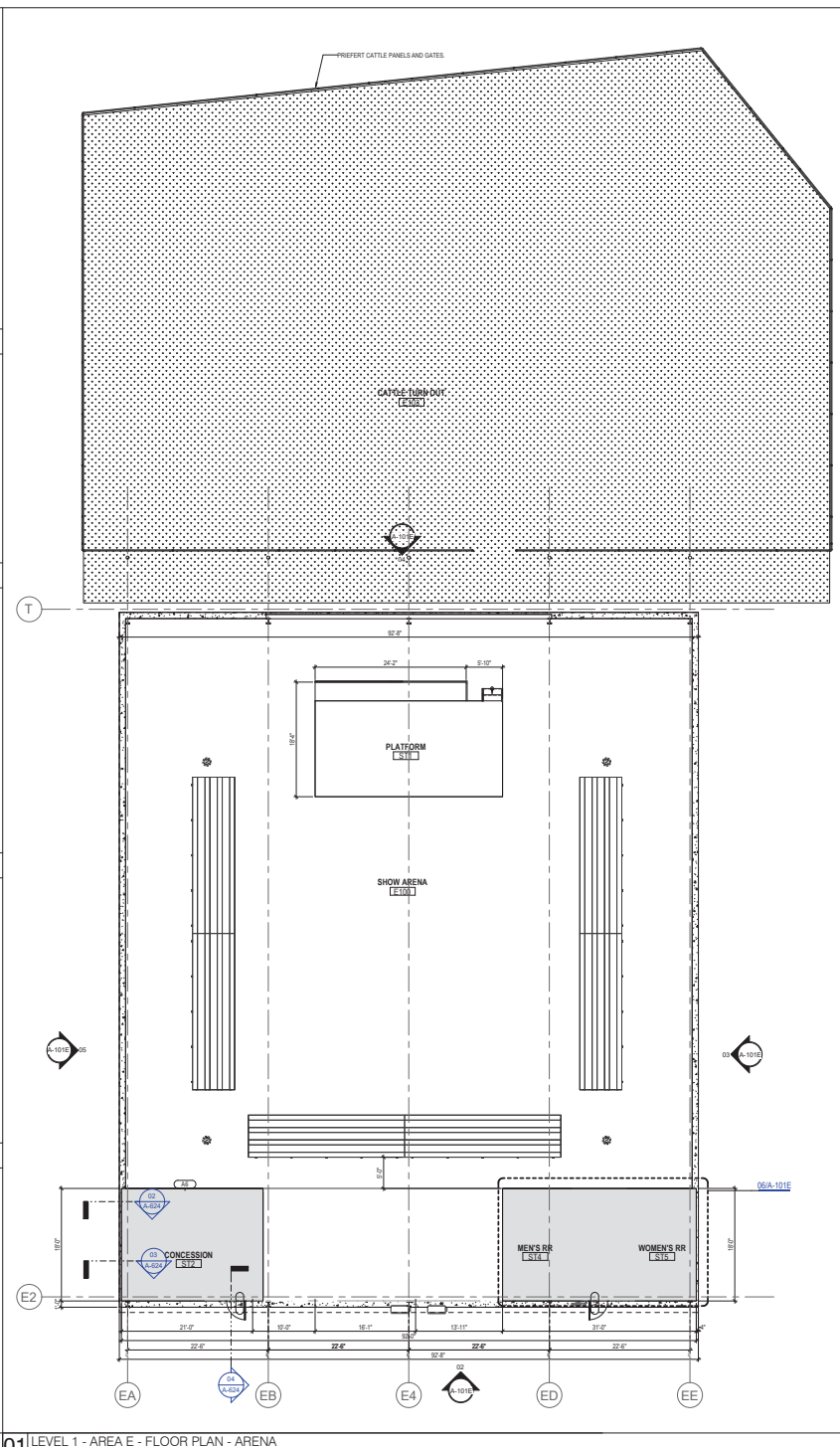
04 ARENA - SOUTH ELEVATION
3/32" = 1'-0"



03 ARENA - EAST ELEVATION
3/32" = 1'-0"



02 ARENA - NORTH ELEVATION
3/32" = 1'-0"



01 LEVEL 1 - AREA E - FLOOR PLAN - ARENA
1/8" = 1'-0"

GENERAL ARCH PLAN NOTES

- DO NOT SCALE DRAWINGS. WRITTEN DIMENSIONS TAKE PRECEDENCE. CONTACT ARCH-IF CLARIFICATION IS NECESSARY IN ORDER TO DETERMINE THE INTENT OF THE CONTRACT DOCUMENTS.
- DIMENSIONS NOTED AS "N.T." OR "N.T." ARE NOT TO SCALE.
- ALL DIMENSIONS ARE TO STRUCTURAL COLUMN LINES OR THE SURFACE OF PARTITION ASSEMBLY UNLESS NOTED OTHERWISE.
- VERIFY ALL DIMENSIONS AND EXISTING CONDITIONS BEFORE COMMENCING WORK. NOTIFY ARCHITECT OF ANY DISCREPANCIES PRIOR TO PROCEEDING WITH AFFECTED WORK.
- NOTES OR DIMENSIONS NOTED AS "TYPICAL" OR "TYP." OR "TYP." SHALL APPLY TO CONDITIONS THAT ARE THE SAME OR SIMILAR.
- DIMENSIONS NOTED AS "FIELD VERIFY" OR "V.F." OR "V.P." SHALL BE MEASURED AND CONFIRMED AT THE PROJECT SITE BY THE CONTRACTOR AND REVIEWED WITH THE ARCHITECT BEFORE INCORPORATING INTO THE WORK.
- DIMENSIONS NOTED AS "CLEAR" OR "CLEAR INSIDE" OR "C.I.P." REQUIRE SPECIFIC COORDINATION AMONG DISCIPLINES AND/OR MANUFACTURERS.
- REFER TO PARTITION TYPES ON A-B-D SERIES SHEETS.
- ALL INTERIOR PARTITIONS THIS SHEET EXCEPT FOR FURF-OUT PARTITIONS, SHALL BE PARTITION TYPE: UNO.
- ALL INTERIOR FURF-OUT PARTITIONS THIS SHEET SHALL BE PARTITION TYPE: F3 UNO.
- ADJUST INTERIOR PARTITION WALLS WHERE WALL PARTITIONS OF DIFFERING THICKNESS ABUT AND OR ADJOIN IN THE SAME PLANE.
- ADJUST INTERIOR PARTITION WALLS AT JOINTS WHERE DIFFERING THICKNESS WALL PARTITIONS ABUT AND OR ADJOIN MASONRY WALL PARTITIONS IN THE SAME PLANE.
- ALL INTERIOR WALLS AND CEILING SHALL HAVE BALANCE JOINTS.
- ALL DOORS SHALL BE SET 4 INCHES OFF THE ADJACENT PERPENDICULAR WALL ON THE HINGE SIDE OF THE DOOR UNLESS NOTED OTHERWISE. COMPASS SHALL HAVE BALANCE JOINTS BUT NOT LIMITED TO COMPACTS CONCERNING ACCESSIBILITY STANDARDS.
- ALL FLOOR THRESHOLDS AT ALL EXTERIOR DOORS SHALL BE SET IN FULL BED OF SEALANT.
- COORDINATE ALL ROOF DRAIN LEADER LOCATIONS WITH FLOOR PLAN PRIOR TO FLOOR SLAB CONSTRUCTION.
- ALL FLOOR BLOBS TO FLOOR DRAINS SHALL NOT EXCEED 1/8".
- PROVIDE AND INSTALL JOIST BRACING UNDERLAMENT WHERE SEVEN FLOOR SLAB EXISTS PRIOR TO INSTALLATION OF FLOOR FINISHES.
- COORDINATE HOVSEKEEPING LOCATIONS AND DIMENSIONS WITH EQUIPMENT TO BE INSTALLED.
- ALL REQUIRED ACCESSIBLE CLEARANCES FOR ALL ITEMS, INCLUDING BUT NOT LIMITED TO ALL COUNTERTOPS, ALL PLUMBING FITTINGS, ALL DRINKING FOUNTAINS, ALL ELECTRIC WATER COOLERS, ALL LAVATORIES, ALL URINALS, ALL TOILETS SHALL BE STRICTLY ENFORCED.
- APPLY RETURNINGS CORNER TO ALL CONCEALED STRUCTURAL STEEL MEMBERS AT ALL EXTERIOR CORNER LOCATIONS.
- REFER TO OTHER SPECIFICATIONS DOCUMENTS FOR ADDITIONAL SCOPE OF WORK.

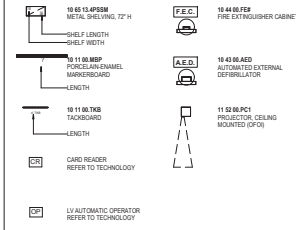
EXTERIOR MATERIALS LEGEND



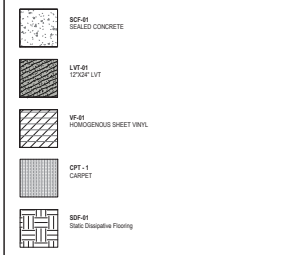
KEYNOTE LEGEND

NUMBER	DESCRIPTION
07 42 13 MPP01.1	INSULATED METAL WALL PANEL, MPP-01.1, EXPOSED FASTENER, SHINGLE TAN
07 61 00 PBR01.1	INSULATED METAL ROOF PANEL, PBR-01, GALVALUMINE

FLOOR PLAN LEGEND



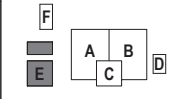
FLOOR FINISH LEGEND



NOTE: PATTERNS ARE FOR REPRESENTATION ONLY, NOT FOR INSTALLATION.



WYLIE ISD CTE & AG CENTER
1501 Wrennway Ln., Wynn, TX 75089



CLIENT		
Wylie Independent School District		
DATE	PROJECT NUMBER	
2/20/2024	230558	
DRAWING HISTORY		
No.	Description	Date
1	Issued for	2/20/24
2	Revised	2/20/24

CHECKED BY: MD
DRAWN BY: KR,ST

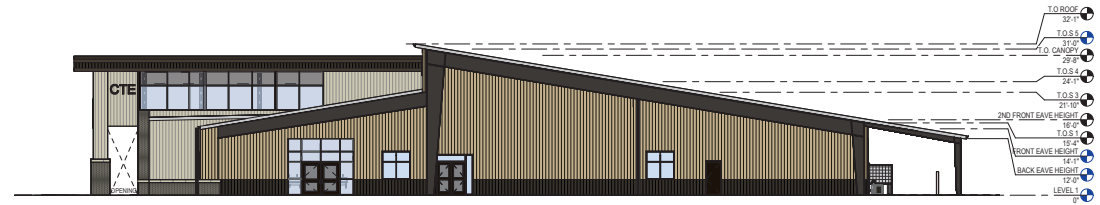
LEVEL 1 - AREA E
FLOOR PLAN
A-101E



04 PLAN SOUTH ELEVATION P&Z
3/32" = 1'-0"



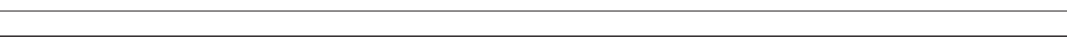
03 PLAN NORTH ELEVATION P&Z
3/32" = 1'-0"



02 PLAN EAST ELEVATION P&Z
3/32" = 1'-0"



01 PLAN WEST ELEVATION P&Z
3/32" = 1'-0"



- ### GENERAL ELEVATION NOTES
1. ALL BUILDING EXPANSION JOINT TO BE 1" UNLESS OTHERWISE NOTED.
 2. CONTROL JOINT IN MASONRY VENEER TO BE 3/8" TYPICAL UNLESS OTHERWISE NOTED. EXTEND FULL HEIGHT OF WALL.
 3. 1/2" EXPANSION JOINT FILLER ON BOTH ENDS OF ALL STEEL LANTER ANGLES.
 4. EXPOSED EXTERIOR STRUCTURAL STEEL LUBE MEMBERS SHALL BE PAINTED 9-A.
 5. STEEL MASONRY LANTER SHALL BE GALVANIZED.
 6. EXPOSED CONCRETE WALLS, COLUMNS, AND BEAMS SHALL BE RUBBED GROUT FINISH.
 7. MASONRY WEIR AT 18" O.C. MAXIMUM.
 8. EXTERIOR ALUMINUM STOREFRONT SYSTEM SHALL HAVE ALUMINUM SUB-SILLS WITH END DAMS.
 9. EXTERIOR ALUMINUM STOREFRONT SYSTEM SHALL HAVE CONTINUOUS ALUMINUM BACKLERS WITH CONTINUOUS PERIMETER ALUMINUM ANGLE.
 10. FLEXIBLE MEMBRANE FLASHING AT WINDOWS, SILLS AND LANTERS SHALL HAVE PRE-FORMED END DAMS.
 11. MASONRY VENEER CONTROL JOINTS SHALL BE 3/8" AT INSIDE CORNERS. AT DISTANCES NOT TO EXCEED 8' FROM OUTSIDE CORNERS, AND AT 32'-0" O.C. MAXIMUM. UNLESS NOTED OTHERWISE, REFERENCE EXTERIOR ELEVATION PANEL.
 12. EXTERIOR CONDUIT, HEADS, AND DOWNSPUTS SHALL BE PRE-FINISHED SHEET METAL, COLOR SELECTED BY ARCHITECT.
 13. DOWNSPUTS SHALL BE 1/2" GALVA PRE-FINISHED DOWNPOUT BOOTS 10'-0" ABOVE FINISH GRADE. CO-OR SELECTED BY ARCHITECT.
 14. DOWNSPUTS AND/OR ROOF DRAINS SHALL BE CONNECTED TO STORM DRAIN SYSTEM UNLESS OTHERWISE NOTED. REFERENCE CIVIL FOR STORM DRAIN CONNECTION DETAILS AND LOCATION.
 15. CONTRACTOR SHALL PROVIDE MOCK-UP FOR EACH EXTERIOR CONDITION AND CONSTRUCTION ASSEMBLY TYPE. INCLUDE A 250 WOOD MOCK-UP. MOCK-UP SHALL INCLUDE METAL FLASHING, VERTICAL AND HORIZONTAL FLEXIBLE MEMBRANE FLASHING, AND WINDOW METALLATIONS AS DETAILED IN CONSTRUCTION DOCUMENTS. MOCK-UP SHALL BE A MINIMUM OF 6'-0" TALL X 6'-0" LONG WITH AN EXTERIOR CORNER, INTERIOR CORNER, AND VERTICAL CONTROL JOINTS. COORDINATE LOCATION OF MOCK-UP PANEL WITH ARCHITECT PRIOR TO CONSTRUCTION.
 16. REFER TO STRUCTURAL SHEETS S301 AND S411 FOR ADDITIONAL COORDINATION INFORMATION FOR CONCRETE REINFORCEMENT AND CONTROL JOINT PLACEMENT.
 17. REFER TO 1105-401 FOR ADDITIONAL COORDINATION INFORMATION FOR LOOSE MASONRY LANTERS WITH METAL STUD OR CIVIL BACKUP.
 18. REFER TO SHEET S411 UNDER THE MASONRY NOTES HEADING FOR ADDITIONAL COORDINATION INFORMATION FOR MASONRY CONTROL JOINT PLACEMENT.

EXTERIOR MATERIALS LEGEND

	MWP-01 METAL WALL PANEL		WL CAST IN PLACE CONCRETE WALL
	MWP-02 METAL WALL PANEL		CBW-01 CONCRETE MASONRY UNIT
	MWP-03 METAL WALL PANEL		BK-01 RUNNING BOND BRICK
	SSR-01 STANDING SEAM ROOF PANEL		BK-02 RUNNING BOND BRICK
	PFR-01 PREFABRICATED METAL CANOPY		CS-01 CAST STONE (CORDOVA STONE)

WYLIE ISD CTE & AG CENTER
1501 Highway 61, Wylie, TX 75086

PLANNING AND ZONING

CLIENT: Wylie Independent School District
DATE: 2/20/2024
PROJECT NUMBER: 202058

DRAWING HISTORY

No.	Description	Date

CHECKED BY: Checker
DRAWN BY: Author

OVERALL EXTERIOR ELEVATIONS P&Z

A-513

