

## Casteel Sign

11106 Morrison Lane  
Dallas, TX 75229  
T 214.352.7446 F 214.352.7448  
www.casteelsign.com

Olde City Park  
5 Ballard Avenue at 5H & 78  
Wylie, Texas

Project No.:

Olde City Park Marquee in  
Masonry Monument

### Specifications

- Electrical load:  
120VAC;  
Line 1 15.38 Amps,  
Line 2 11.09 Amps
- Fontstyle:  
Humnst777 BT Bold

90 sf

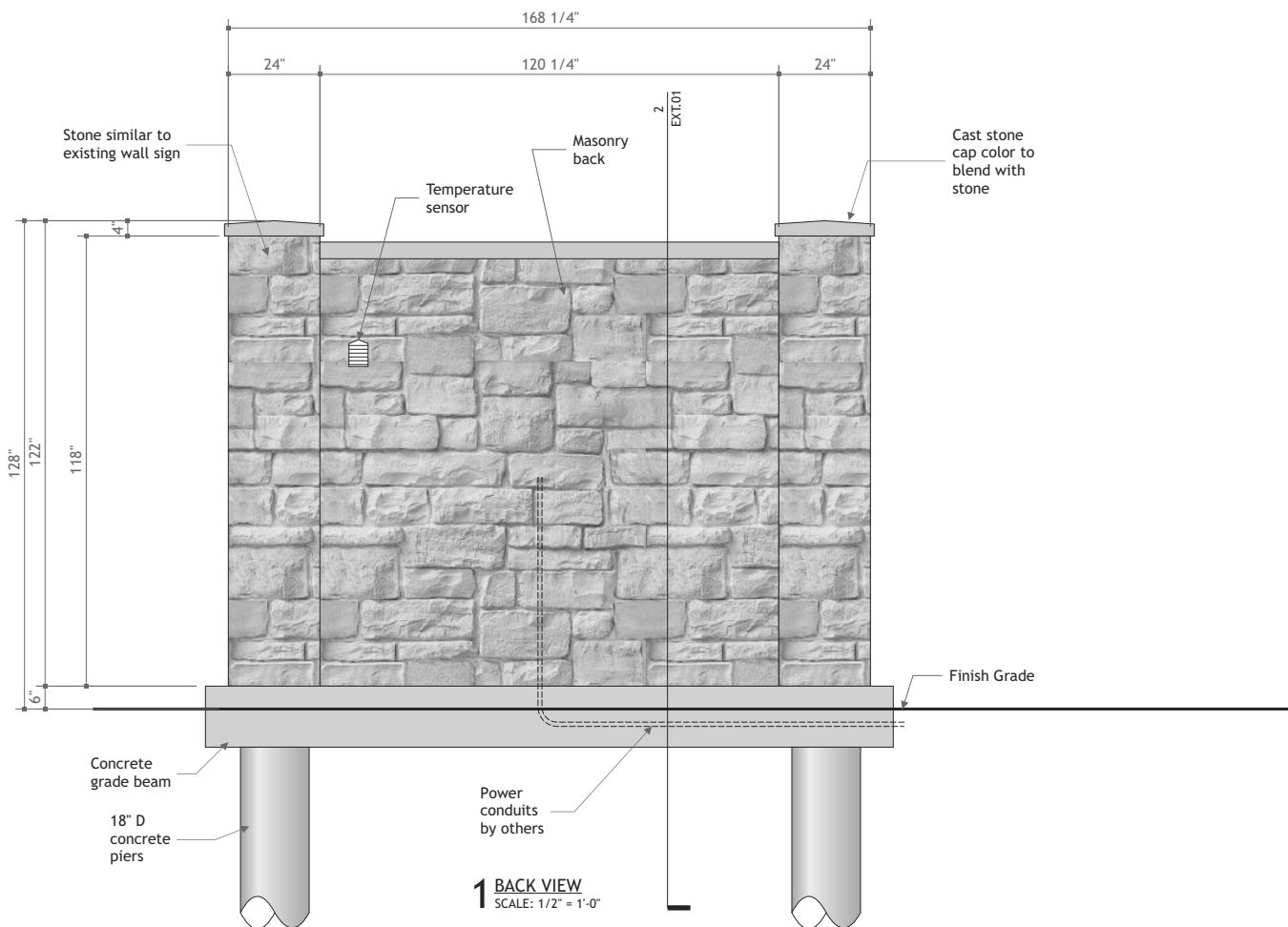
Sign Type A.1

Date 05.26.2021

Scale See Drawing

ALL IDEAL, PLANS, AND ELECTRONIC  
ART INDICATED ON THIS DRAWING ARE  
COPYRIGHTED AND OWNED BY  
CASTEEL & ASSOCIATES, INC. AND  
SHALL NOT BE REPRODUCED, USED  
BY OR DISCLOSED TO ANY PERSONS,  
FIRM OR CORPORATION FOR ANY  
PURPOSE WHATSOEVER WITHOUT  
PERMISSION OF  
CASTEEL & ASSOCIATES, INC.

EXT.01



## Casteel Sign

11106 Morrison Lane  
Dallas, TX 75229  
T 214.352.7446 F 214.352.7448  
www.casteelsign.com

Olde City Park  
5 Ballard Avenue at 5H & 78  
Wylie, Texas

Project No.:

Waxahachie Existing HS  
Marquee in Masonry  
Monument

### Specifications

Sign Type A.1

Date 05.26.2021

Scale See Drawing

ALL IDEAL, PLANS, AND ELECTRONIC  
ART INDICATED ON THIS DRAWING ARE  
COPYRIGHTED AND OWNED BY  
CASTEEL & ASSOCIATES, INC. AND  
SHALL NOT BE REPRODUCED, USED  
BY OR DISCLOSED TO ANY PERSONS,  
FIRM OR CORPORATION FOR ANY  
PURPOSE WHATSOEVER WITHOUT  
PERMISSION OF  
CASTEEL & ASSOCIATES, INC.

EXT.04









THESE PLANTING NOTES ARE THE PROPERTY OF KIMLEY-HORN AND ASSOCIATES, INC. AND ARE NOT TO BE REPRODUCED OR TRANSMITTED IN ANY FORM OR BY ANY MEANS, ELECTRONIC OR MECHANICAL, INCLUDING PHOTOCOPYING, RECORDING, OR BY ANY INFORMATION STORAGE AND RETRIEVAL SYSTEM, WITHOUT THE WRITTEN PERMISSION OF KIMLEY-HORN AND ASSOCIATES, INC. ANY UNAUTHORIZED REPRODUCTION OR TRANSMISSION OF THESE PLANTING NOTES IS PROHIBITED AND WILL BE SUBJECT TO LEGAL ACTION.

#### PLANTING NOTES:

- LANDSCAPE CONTRACTOR SHALL BE RESPONSIBLE FOR VERIFYING THE LOCATION OF ALL UNDERGROUND UTILITIES, PIPES, STRUCTURES, AND LINE RUNS IN THE FIELD PRIOR TO THE INSTALLATION OF ANY PLANT MATERIAL.
- IT IS THE RESPONSIBILITY OF THE CONTRACTOR TO ADVISE THE LANDSCAPE ARCHITECT OF ANY CONDITION FOUND ON THE SITE WHICH PREVENTS INSTALLATION AS SHOWN ON THESE DRAWINGS.
- ALL PLANT MATERIAL SHALL BE SHOWN WITH A HEIGHT AND GROWING CONDITION AND MUST BE REPLACED WITH PLANT MATERIAL OF SAME VARIETY AND SIZE IF DAMAGED, DESTROYED, OR REMOVED.
- LANDSCAPE CONTRACTOR SHALL BE RESPONSIBLE FOR FINE GRADING AND REMOVAL OF EXCESS FROM TOP TO MATCH IN ALL AREAS.
- FINAL FINE GRADING SHALL BE REVIEWED BY THE LANDSCAPE ARCHITECT. LANDSCAPE CONTRACTOR SHALL BE RESPONSIBLE FOR ANY ADDITIONAL TOPSOIL REQUIRED TO CREATE A SMOOTH CONDITION PRIOR TO PLANTING.
- ALL PLANT QUANTITIES LISTED ARE FOR INFORMATION ONLY. IT IS THE CONTRACTOR'S RESPONSIBILITY TO PROVIDE FULL COVERAGE IN ALL PLANTING AREAS AS SPECIFIED IN THE PLANT SCHEDULE AND CHECK PLANT QUANTITIES.
- LANDSCAPE CONTRACTOR TO PROVIDE STEEL EDGING AS SHOWN IN ALL PLANTING BEDS AND LAWN AREAS.
- ALL PLANT MATERIAL SHALL CONFORM TO THE SPECIFICATIONS AND SIZES SHOWN IN THE PLANT LIST AND SHALL BE NURSERY GROWN IN ACCORDANCE WITH THE AMERICAN STANDARD FOR NURSERY STOCK, LATEST EDITION AMERICAN ASSOCIATION OF NURSERYMEN STANDARDS. ANY PLANT SUBSTITUTION SHALL BE APPROVED BY LANDSCAPE ARCHITECT PRIOR TO PURCHASE.
- LANDSCAPE CONTRACTOR IS RESPONSIBLE FOR ANY COORDINATION WITH OTHER CONTRACTORS ON SITE AS REQUIRED TO ACCOMPLISH ALL PLANTING OPERATIONS.
- ALL NEW PLANTING AREAS TO BE ABANDONED PER SPECIFICATIONS.
- ANY PLANT MATERIAL THAT DOES NOT SURVIVE SHALL BE REPLACED WITH AN EQUIVALENT SIZE AND SPECIES WITHIN THIRTY (30) DAYS.
- PLANT MATERIAL SHALL BE PROTECTED AS NECESSARY TO CONTROL SIZE BUT NOT TO DISRUPT THE NATURAL GROWTH PATTERN OR CHARACTERISTIC FORM OF THE PLANT EXCEPT AS NECESSARY TO ACHIEVE HEIGHT CLEARANCE FOR VISIBILITY AND PEDESTRIAN PASSAGE OR TO ACHIEVE A CONTROLLED SPREAD PROPOSED IF REQUIRED.
- LANDSCAPED AREAS SHALL BE KEPT FREE OF TRASH, WEEDS, DEBRIS, AND DEAD PLANT MATERIAL.
- ALL LIVE EXPOSED SOILS AND BARE AREAS SHALL BE FILL FOR BARE AREAS. SOILS TO BE REMOVED FROM PLANTING AREAS TO A DEPTH OF 2" AND REPLACED WITH ORGANIC IMPORTED TOPSOIL FILL.
- ALL DISTURBED AREAS OUTSIDE OF PLANTING ZONE TO BE REPLACED WITH BARE SOIL PER SPECIFICATIONS.
- CONTRACTOR TO PROVIDE 18 MONTH MAINTENANCE AFTER ALL CONTRACTORS IS COMPLETE.

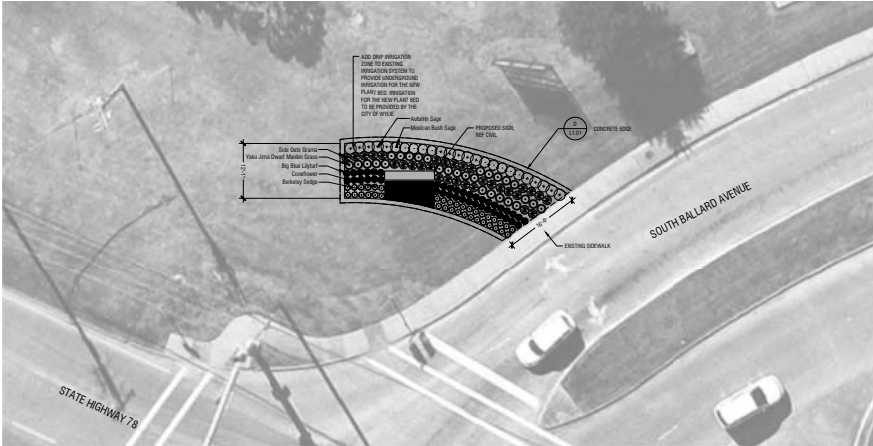
#### PLANT SCHEDULE

SHRUBS	COMMON / BOTANICAL NAME	CONT.	SIZE	SPACING	REMARKS
	Autumn Sage / Salvia greggii	3 gal	12" h X 18" w	24" OC	CONTAINER, NURSERY GROWN, MATCHED AND WELL ROOTED
	Big Blue Lilyturf / Liriope muscari 'Big Blue'	1 gal	18" h X 12" w	18" OC	CONTAINER, NURSERY GROWN, MATCHED AND WELL ROOTED
	Coneflower / Echinacea purpurea	1 gal	18" h X 12" w	18" OC	CONTAINER, NURSERY GROWN, MATCHED AND WELL ROOTED
	Mexican Bush Sage / Salvia leucantha	3 gal	18" h X 18" w	24" OC	CONTAINER, NURSERY GROWN, MATCHED AND WELL ROOTED
	Side Oats Grama / Bouteloua curtipendula	3 gal	18" h X 18" w	24" OC	CONTAINER, NURSERY GROWN, MATCHED AND WELL ROOTED
	Yaku Jima Dwarf Maiden Grass / Miscanthus sinensis 'Yaku Jima'	3 gal	18" h X 18" w	24" OC	CONTAINER, NURSERY GROWN, MATCHED AND WELL ROOTED

GROUND COVERS	COMMON / BOTANICAL NAME	CONT.	SIZE	SPACING	REMARKS
	Berkley Sedge / Carex divisa	1 gal	6" h X 12" w	12" o.c.	CONTAINER, NURSERY GROWN, MATCHED AND WELL ROOTED

#### IRRIGATION NOTES:

- AN AUTOMATIC IRRIGATION SYSTEM SHALL BE PROVIDED FOR ALL PLANTING AREAS, WITH SPACING FOR STREETS AND WALKS AS PROVIDED.
- IRRIGATION SYSTEM SHALL BE MAINTAINED AND REPLACED AS NECESSARY.
- ALL PLANTING AREAS TO BE FULLY IRRIGATED.
- IRRIGATION SYSTEM TO HAVE A FULLY AUTOMATED CONTROL SYSTEM.
- ANY EXISTING PLANTING DAMAGED DURING CONSTRUCTION TO BE REPLACED AT NO COST TO THE OWNER.



Landscape Plan  
Scale: 1" = 10'-0"

A

SHEET NUMBER L1.00	
LANDSCAPE PLAN	
OLDE CITY PARK ELECTRONIC MONUMENT SIGN WYLE, TEXAS PREPARED FOR CITY OF WYLE	
DATE SEPTEMBER 2020	BY JAN
DESIGNED BY JAN	CHECKED BY JAN
KIMLEY-HORN AND ASSOCIATES, INC. © 2019 KIMLEY-HORN AND ASSOCIATES, INC. WYLE, TEXAS 75098 WWW.KIMLEY-HORN.COM TX-008	
REVISIONS	
NO.	DATE