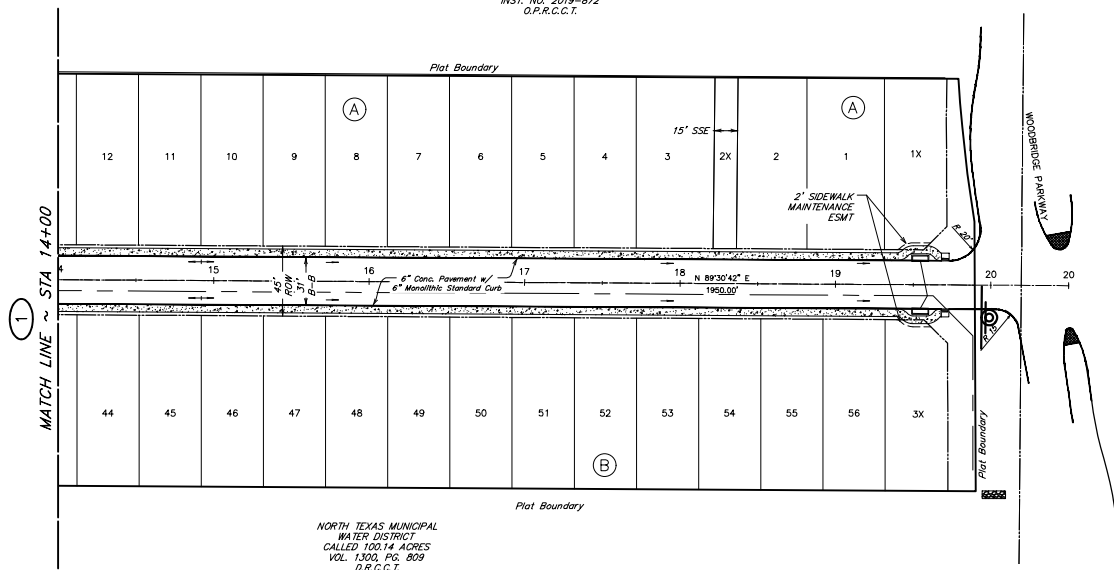


WOODBIDGE VILLAS  
TRACT A-3, PHASE 1  
INST. NO. 2019-872  
O.P.R.C.C.T.



NORTH TEXAS MUNICIPAL  
WATER DISTRICT  
CALLED 100.14 ACRES  
VOL. 1300, PG. 809  
D.R.C.C.T.

BENCH MARK  
CM #3

MONUMENT LOCATED ON THE SOUTHWESTERLY SIDE OF WYLE  
HIGH SCHOOL FOOTBALL STADIUM AND NEAR THE  
NORTHWEST CORNER OF FOUNDERS PARK SPORTS FIELDS.  
APPROXIMATELY 31.8'± SOUTH OF B.C., 41.4'± NORTH OF  
B.C., AND 8.5'± WEST OF B.C., AND 111'± NORTH OF CHAIN  
LINK FENCE AROUND FOUNDERS PARK SPORTS FIELDS.  
ELEVATION = 520.307

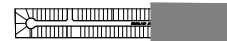
#### LEGEND:

- PROPOSED BACK OF CURB
- PROPOSED PAVEMENT CENTERLINE
- PROPOSED RIGHT OF WAY
- PROPOSED VALLEY GUTTER
- PROPOSED SIDEWALK
- CURB RETURN
- POINT OF INTERSECTING CURB RETURNS
- SANITARY SEWER EASEMENT
- DRAINAGE EASEMENT
- STAMPED CONCRETE CROSS-WALK
- CURB RAMP

#### NOTES:

- All Curbs are to be Monolithic 6" Mountable Curbs, Unless Noted Otherwise.
- All Dimensions are to Back of Curb Unless Otherwise Noted.
- See Sheet 31 for Signage Details.
- Pavement sections and subgrade shall reference and be constructed per the geotechnical recommendations.
- Compacted fill to 95% standard proctor density in maximum 8-inch lifts.
- All curb returns have 20' Radius unless otherwise noted.

SCALE: 1" = 40'



#### !!CAUTION!!

Contractor to Verify  
Exact Location &  
Depth of Exist.  
Facilities Prior to any  
Construction Activities

#### CAUTION!!!

DIAL 811  
48 HOURS PRIOR TO CONSTRUCTION

MANORS AT WOODBRIDGE, LTD.  
CITY OF WYLE  
COLLIN COUNTY, TEXAS

MANORS AT WOODBRIDGE  
WOODLAND DRIVE  
(2 OF 2)



SCALE: 1"=40' H., 1"=4' V. DGN. BY: SAS  
DATE: SEPTEMBER 2021 DWN. BY: JBP  
JOB NO. 05125-0006-00 DWG. NO.  
SUBMITTED: SURV. BY:  
F.B. NO.

SHEET NO.  
2