

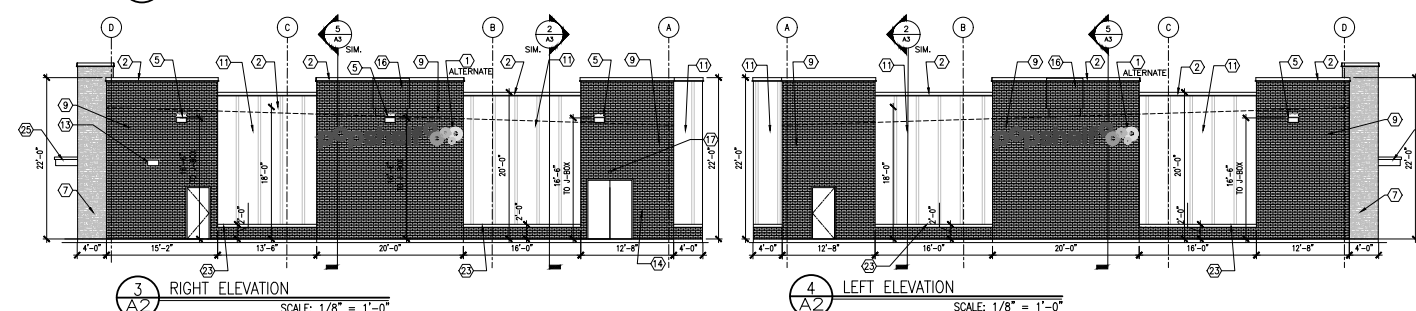
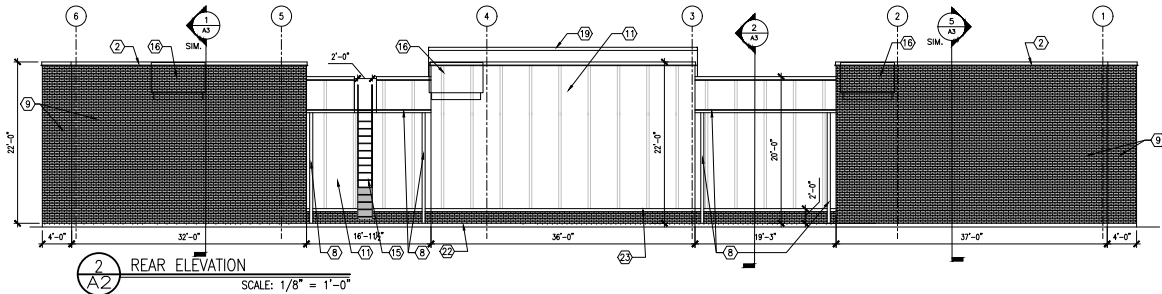
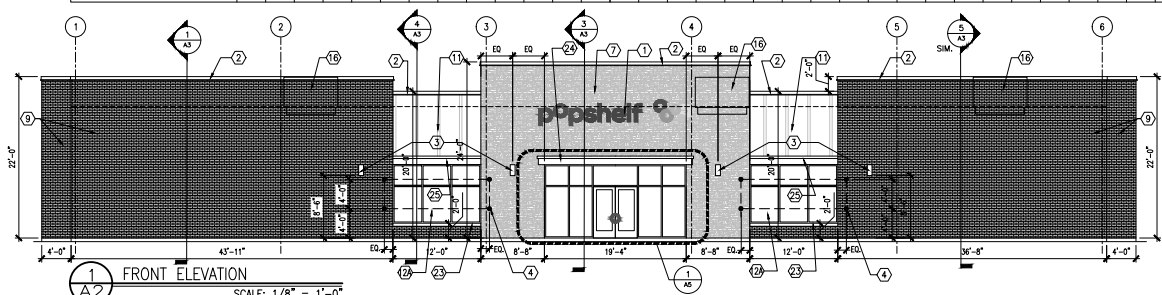
**FINISHES**

EXTERIOR FINISHES ARE TO MATCH ON BE  
EQUAL TO UP METAL BUILDING SYSTEMS  
FINISH SELECTION UNLESS AUTHORITY  
HAVING JURISDICTION DOES NOT ALLOW

GUTTERS  
DOWN SPOUTS  
BRICK AT BUILD FACADE TO BE PRE-FINISHED  
OR PAINTED (2 COATS)

CANOPY AND EYEBROWS  
FIBER CEMENT PANELS  
COPING AND TRIM  
STOREFRONT SYSTEM  
STANDING SEAM METAL ROOF PANELS  
INTERIOR RECEIVING FLOOR LINER PANELS

UP BUILDINGS	STAR BUILDING SYSTEMS	NUCOR BUILDING SYSTEMS	INO REE STEEL BUILDINGS	CHEF BUILDINGS
ATTN: RANDY SPEARS 205-907-8176	ATTN: JEFF HORN 866-664-8899	ATTN: BOB BARRY 315-622-4440	ATTN: KEVIN BUGLER 800-633-3378	ATTN: MIKE PUGACH 800-845-1767
CANOPY ONLY	CANOPY ONLY	CANOPY ONLY	CANOPY ONLY	CANOPY ONLY
DOWN SPOUTS	DOWN SPOUTS	DOWN SPOUTS	DOWN SPOUTS	DOWN SPOUTS
BRICK AT BUILD FACADE	BRICK AT BUILD FACADE	BRICK AT BUILD FACADE	BRICK AT BUILD FACADE	BRICK AT BUILD FACADE
CANOPY AND EYEBROWS	CANOPY AND EYEBROWS	CANOPY AND EYEBROWS	CANOPY AND EYEBROWS	CANOPY AND EYEBROWS
FIBER CEMENT PANELS	FIBER CEMENT PANELS	FIBER CEMENT PANELS	FIBER CEMENT PANELS	FIBER CEMENT PANELS
COPING AND TRIM	COPING AND TRIM	COPING AND TRIM	COPING AND TRIM	COPING AND TRIM
STOREFRONT SYSTEM	STOREFRONT SYSTEM	STOREFRONT SYSTEM	STOREFRONT SYSTEM	STOREFRONT SYSTEM
STANDING SEAM METAL ROOF PANELS	STANDING SEAM METAL ROOF PANELS	STANDING SEAM METAL ROOF PANELS	STANDING SEAM METAL ROOF PANELS	STANDING SEAM METAL ROOF PANELS
INTERIOR RECEIVING FLOOR LINER PANELS	INTERIOR RECEIVING FLOOR LINER PANELS	INTERIOR RECEIVING FLOOR LINER PANELS	INTERIOR RECEIVING FLOOR LINER PANELS	INTERIOR RECEIVING FLOOR LINER PANELS



PAIN ALL EXTERIOR ELECTRICAL  
CONDUITS TO MATCH BUILDING

ELEVATION CALCULATIONS	BRICK	STONE	FIBER CEMENT SIDING	GLAZING
FRONT ELEVATION	64%	21%	8%	9%
REAR ELEVATION	55%	0%	45%	0%
RIGHT SIDE ELEV.	68%	0%	32%	0%
LEFT SIDE ELEV.	65%	0%	35%	0%

**ELEVATION KEYED NOTES**

- SIGN FURNISHED AND INSTALLED BY DOLLAR GENERAL CORP. WITH CIRCUIT AS NOTED ON ELECTRICAL PLAN. SIGN TO BE CENTERED ON FRONT OF BUILDING. CONTRACTOR IS TO PROVIDE ADEQUATE BLOCKING AS REQUIRED BY SIGN MANUFACTURER TO SUPPORT SIGN WEIGHT OF UP TO 1,400 LBS. EXTERIOR CANOPY SIGN SHALL BE SUPPORTED BY THE FACE OF CANOPY. CONTRACTOR IS TO PROVIDE ADEQUATE STRUCTURE TO SUPPORT SIGN. COORDINATE THE PROPER SIGNAGE TO BE USED WITH DOLLAR GENERAL.
- METAL COPING-SEE FINISH SCHEDULE FOR COLOR
- SCOFF LIGHT. REFER TO ELEC. DRAWINGS FOR ADDITIONAL INFO.
- 1/2" DIAMETER x 6" LONG STEEL EYE BOLTS (CLOSED) WITH 1" DIAMETER OPENINGS. DRILL AND EPOXY INTO BLOCK WALL. 4 BOLTS TO BE LOCATED AS SHOWN EACH SIDE OF ENTRY. TOTAL OF 8 BOLTS.
- WALL PACK. REFER TO ELEC. DRAWINGS FOR ADDITIONAL INFO.
- NOT USED
- STONE VENEER.
- GUTTER AND DOWNSPOUT - SEE FINISH SCHEDULE FOR COLOR.
- BRICK VENEER SEE FINISH SCHEDULE FOR COLOR
- STANDING SEAM METAL ROOF.
- FIBER CEMENT PANELS-SEE FINISH SCHEDULE FOR COLOR
- STOREFRONT REFERENCE ELEVATION F/AS.O
- STOREFRONT SIDE WINDOWS REFERENCE ELEVATION G/AS.O
- VENT FOR BATHROOM EXHAUST. REFER TO MECHANICAL DRAWING M1 FOR ADDITIONAL INFORMATION.
- DOOR BUZZER. REFER TO ELECTRICAL DRAWING E1 FOR ADDITIONAL INFORMATION.
- ROOF ACCESS LADDER.
- HVAC UNITS MOUNTED ON ROOF. REFER TO MECHANICAL SHEET M1 FOR MORE INFORMATION.
- OUTSIDE AIR TEMP. SENSOR MOUNTED OVER RECEIVING DOOR AT 9'-0" A.F.F.
- MINIMUM EAVE HEIGHT IS 15'-6" A.F.F.
- PARAPET BEYOND.
- IN NORTHERN CLIMATES, PROVIDE SNOW GUARDS ON ROOF PER LOCAL CODE.
- EXTEND PARAPET WALL UP AS NEEDED TO SCREEN ROOF MOUNTED EQUIPMENT IF REQUIRED BY LOCAL ORDINANCE.
- FINISH GRADE TO BE A MINIMUM OF 6" BELOW FINISHED FLOOR LEVEL AT ALL NONPAVED AREAS.
- SILL OVER BRICK-PAINT TO MATCH BRICK.
- ALUMINUM CANOPY BY METAL BUILDING MANUFACTURER
- ALUMINUM EYEBROW OVER SIDE WINDOWS