

GENERAL DRAINAGE NOTES

1. All materials and construction shall be in accordance with the City of Wylie Standard Specifications and Construction Standards, and Standard Specifications for Public Works Construction prepared by North Central Texas Council of Governments (Latest Revision).
2. Existing utilities are shown schematically and are for the contractors guidance only. The location and/or elevation of existing utilities as shown on these plans are based on records of the various utility companies, and, where possible, measurements taken in the field. The contractor must call the appropriate utility company at least 48 hours prior to any excavation to request exact field location of utilities.
3. The contractor shall be responsible for protecting all existing improvements in the construction of this project. The contractor is responsible for repairs of damage to any existing improvements during construction. Repairs shall be equal to or better than condition prior to construction.
4. All storm sewer pipe 18" and larger shall be Class III RCP unless otherwise noted. All storm sewer pipe 18" and smaller shall be PVC drainage pipe or approved equal, unless otherwise noted (RCP only under fire lanes).
5. Contractor shall be responsible for maintaining trench safety requirements in accordance with the latest standards of O.S.H.A. or any other agency having jurisdiction for excavation and trenching procedures. Contractor shall provide and implement a trench safety plan complying with O.S.H.A.
6. All RCP pipe joints shall have Ram-Neck joint sealer. In the absence of a City Standard for joint sealer.
7. All roof drain laterals shall be 0.50% min. slope.

EXISTING DRAINAGE FLOW CALCULATIONS						
I.D. NO.	AREA (AC.)	C	Tc (MIN)	100-YEAR (IN/HR)	Q (CFS)	COMMENTS
SITE	7.788	0.40	15.0	7.52	23.43	PRE-PROJECT
Q = CIA LAND USE: PASTURE						

PROPOSED DRAINAGE FLOW CALCULATIONS						
I.D. NO.	AREA (AC.)	C	Tc (MIN)	100-YEAR (IN/HR)	Q (CFS)	COMMENTS
A1	4.738	0.90	10.0	8.74	37.27	DROP INLET A1
A2	0.526	0.90	10.0	8.74	4.14	DROP INLET A1
B	0.216	0.90	10.0	8.74	1.70	CURB INLET B
C1	0.651	0.90	10.0	8.74	5.12	CURB INLET C1
C1	0.117	0.90	10.0	8.74	0.92	GRATE INLET C2
C3	0.043	0.90	10.0	8.74	0.34	GRATE INLET C2
C	0.183	0.90	10.0	8.74	1.44	GRATE INLET D
E	0.212	0.90	10.0	8.74	1.67	CURB INLET E
F1	0.117	0.90	10.0	8.74	0.89	CURB INLET C1
F1	0.690	0.90	10.0	8.74	5.43	DROP INLET F2
G	0.247	0.90	10.0	8.74	1.94	EX. CURB INLET G
H	0.050	0.90	10.0	8.74	0.40	SH 78 EX. CURB INLET
SITE	7.788	0.90	10.0	8.74	61.26	POST-PROJECT
Q = CIA LAND USE: COMMERCIAL & INDUSTRIAL						

PER DOWNSTREAM STORM DRAIN ANALYSIS BY JDIR ENGINEERS & CONSULTANTS, INC. DATED 03/02/2022.
EXISTING STORM SYSTEM DESIGNED TO HANDLE FULLY DEVELOPED SITE DRAINAGE.

SEE DRAINAGE AREA G OF THE DOWNSTREAM STORM DRAIN ANALYSIS SHEET C5C.



Note:
Existing Utilities Shown Per As-Built Documents. Contractor to Field Verify Location and Depth of All Utilities Prior to Construction and Notify Engineer of any Discrepancies.

STOP!
CALL BEFORE YOU DIG



(@ least 72 hours prior to digging)

CITY BENCHMARK USED FOR CONTROL
CM 1 = Standard City of Wylie monument located on the north side of State Highway No. 78 near the east entrance drive for the City of Wylie Municipal Complex at 2000 State Highway No. 78 North. Being 79.7' west of the edge of the east concrete entrance drive, 23.2' south of a 10' wide concrete drive and 76.1 feet north of the edge of asphalt of State Highway No. 78 North. Elev. = 530.294

SITE BENCHMARKS

BM-1 = "X" in northwest corner of concrete curb inlet on the north side of Centennial Drive and 55'± north of northwest corner of the subject property.
Elev. = 532.90
BM-2 = 1" Aluminum Disk on the northwest corner of concrete curb inlet on the north side of State Highway No. 78 and 98'± west of the southeast corner of the subject property.
Elev. = 532.67

Issue Dates:	Revision & Date:
1	1
2	2
3	3
4	4
5	5
6	6

CROSS ENGINEERING CONSULTANTS
1720 W. Virginia Street
972.562.4489
McKinney, Texas 75069
Texas P.E. Firm No. F-5915

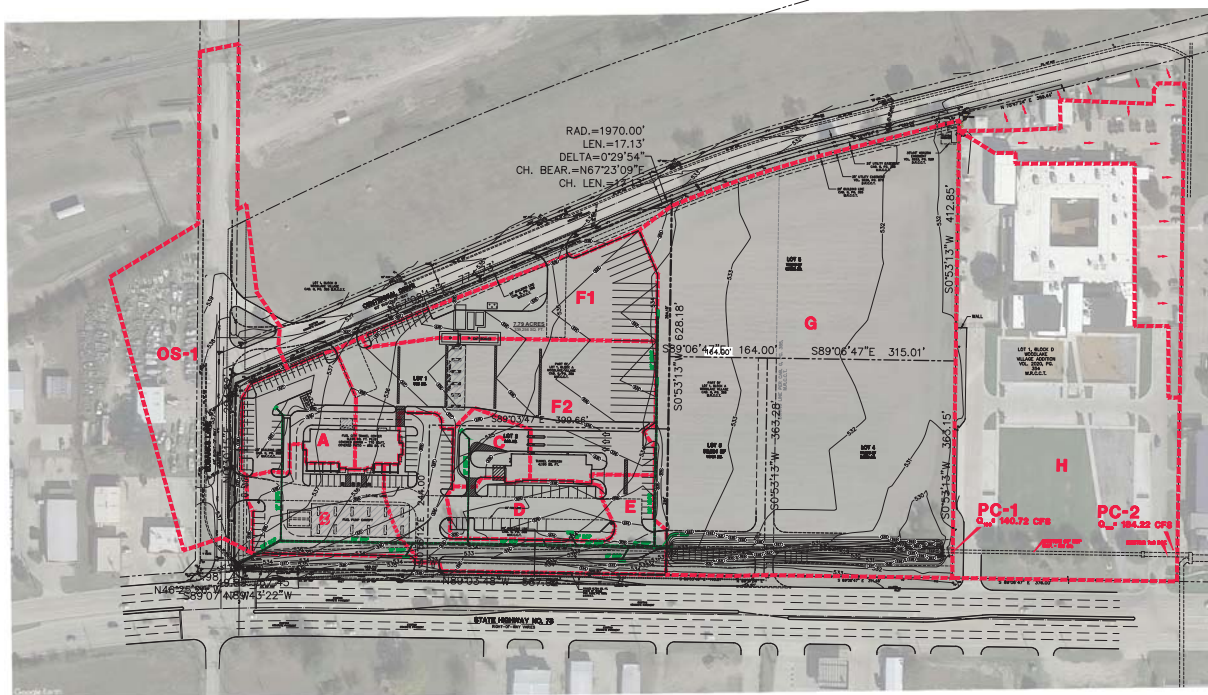
THIS DOCUMENT IS RELEASED FOR THE PURPOSE OF INTERIM REVIEW UNDER THE AUTHORITY OF JON DAVID CROSS, P.E.
NO. 82618
ON 8/29/22
IT IS NOT TO BE USED FOR CONSTRUCTION PURPOSES.

Drawn By: C.E.G.L.	Checked By: C.E.G.L.	Scale: 1"=50'
--------------------	----------------------	---------------

<p>PRELIM DRAINAGE PLAN</p> <p>WYLIE SHOPS BY SLATE</p> <p>SLATE LAND & DEVELOPMENT CO., LLC</p> <p>WYLIE, TEXAS</p>		<p>Sheet No.</p> <p>DP</p> <p>Project No.</p> <p>22007</p>
--	--	---

WYLIE SHOPS BY SLATE

FOR REFERENCE ONLY



PROPOSED DRAINAGE DATA						
AREA	ACRES	C	T ₁₀	1/100 ADF	Q ₁₀₀	OUTFALL COMMENTS
OS-1	2.06	0.90	10	8.74	22.50	FROM RAFTY PLANS FOR EUBANKS
A	0.91	0.90	10	8.74	5.58	TO INLET A
B	0.82	0.90	10	8.74	6.45	TO INLET B
C	0.32	0.90	10	8.74	2.52	TO INLET C
D	0.59	0.90	10	8.74	4.64	TO INLET D
E	1.21	0.90	10	8.74	8.52	TO INLET E
F1	1.14	0.90	10	8.74	8.97	TO INLET F1
F2	2.14	0.90	10	8.74	16.83	TO INLET F2
G	8.10	0.90	10	8.74	63.50	TO LOTS 3, 4, & 5
H	5.53	0.90	10	8.74	43.50	TO LOTS 6, 7, 8, 9, 10, 11, 12, 13, 14, 15, 16, 17, 18, 19, 20, 21, 22, 23, 24, 25, 26, 27, 28, 29, 30, 31, 32, 33, 34, 35, 36, 37, 38, 39, 40, 41, 42, 43, 44, 45, 46, 47, 48, 49, 50, 51, 52, 53, 54, 55, 56, 57, 58, 59, 60, 61, 62, 63, 64, 65, 66, 67, 68, 69, 70, 71, 72, 73, 74, 75, 76, 77, 78, 79, 80, 81, 82, 83, 84, 85, 86, 87, 88, 89, 90, 91, 92, 93, 94, 95, 96, 97, 98, 99, 100, 101, 102, 103, 104, 105, 106, 107, 108, 109, 110, 111, 112, 113, 114, 115, 116, 117, 118, 119, 120, 121, 122, 123, 124, 125, 126, 127, 128, 129, 130, 131, 132, 133, 134, 135, 136, 137, 138, 139, 140, 141, 142, 143, 144, 145, 146, 147, 148, 149, 150, 151, 152, 153, 154, 155, 156, 157, 158, 159, 160, 161, 162, 163, 164, 165, 166, 167, 168, 169, 170, 171, 172, 173, 174, 175, 176, 177, 178, 179, 180, 181, 182, 183, 184, 185, 186, 187, 188, 189, 190, 191, 192, 193, 194, 195, 196, 197, 198, 199, 200, 201, 202, 203, 204, 205, 206, 207, 208, 209, 210, 211, 212, 213, 214, 215, 216, 217, 218, 219, 220, 221, 222, 223, 224, 225, 226, 227, 228, 229, 230, 231, 232, 233, 234, 235, 236, 237, 238, 239, 240, 241, 242, 243, 244, 245, 246, 247, 248, 249, 250, 251, 252, 253, 254, 255, 256, 257, 258, 259, 260, 261, 262, 263, 264, 265, 266, 267, 268, 269, 270, 271, 272, 273, 274, 275, 276, 277, 278, 279, 280, 281, 282, 283, 284, 285, 286, 287, 288, 289, 290, 291, 292, 293, 294, 295, 296, 297, 298, 299, 300, 301, 302, 303, 304, 305, 306, 307, 308, 309, 310, 311, 312, 313, 314, 315, 316, 317, 318, 319, 320, 321, 322, 323, 324, 325, 326, 327, 328, 329, 330, 331, 332, 333, 334, 335, 336, 337, 338, 339, 340, 341, 342, 343, 344, 345, 346, 347, 348, 349, 350, 351, 352, 353, 354, 355, 356, 357, 358, 359, 360, 361, 362, 363, 364, 365, 366, 367, 368, 369, 370, 371, 372, 373, 374, 375, 376, 377, 378, 379, 380, 381, 382, 383, 384, 385, 386, 387, 388, 389, 390, 391, 392, 393, 394, 395, 396, 397, 398, 399, 400, 401, 402, 403, 404, 405, 406, 407, 408, 409, 410, 411, 412, 413, 414, 415, 416, 417, 418, 419, 420, 421, 422, 423, 424, 425, 426, 427, 428, 429, 430, 431, 432, 433, 434, 435, 436, 437, 438, 439, 440, 441, 442, 443, 444, 445, 446, 447, 448, 449, 450, 451, 452, 453, 454, 455, 456, 457, 458, 459, 460, 461, 462, 463, 464, 465, 466, 467, 468, 469, 470, 471, 472, 473, 474, 475, 476, 477, 478, 479, 480, 481, 482, 483, 484, 485, 486, 487, 488, 489, 490, 491, 492, 493, 494, 495, 496, 497, 498, 499, 500, 501, 502, 503, 504, 505, 506, 507, 508, 509, 510, 511, 512, 513, 514, 515, 516, 517, 518, 519, 520, 521, 522, 523, 524, 525, 526, 527, 528, 529, 530, 531, 532, 533, 534, 535, 536, 537, 538, 539, 540, 541, 542, 543, 544, 545, 546, 547, 548, 549, 550, 551, 552, 553, 554, 555, 556, 557, 558, 559, 560, 561, 562, 563, 564, 565, 566, 567, 568, 569, 570, 571, 572, 573, 574, 575, 576, 577, 578, 579, 580, 581, 582, 583, 584, 585, 586, 587, 588, 589, 590, 591, 592, 593, 594, 595, 596, 597, 598, 599, 600, 601, 602, 603, 604, 605, 606, 607, 608, 609, 610, 611, 612, 613, 614, 615, 616, 617, 618, 619, 620, 621, 622, 623, 624, 625, 626, 627, 628, 629, 630, 631, 632, 633, 634, 635, 636, 637, 638, 639, 640, 641, 642, 643, 644, 645, 646, 647, 648, 649, 650, 651, 652, 653, 654, 655, 656, 657, 658, 659, 660, 661, 662, 663, 664, 665, 666, 667, 668, 669, 670, 671, 672, 673, 674, 6

ALL SYSTEMS DOWNSTREAM FROM PC-2 WERE DESIGNED FOR A $Q_{100} = 184.22$ CFS. WALMART USED 188 CFS. THEREFORE, STORM WATER DETENTION NOT REQUIRED.

LEGEND

-  EXISTING CONTOUR LINE
 PROPOSED CONTOUR LINE
 DRAINAGE DIVIDE LINE
 PROPOSED STORM DRAIN SYSTEM

REVISIONS:	
9-3-21	CITY COMMENTS
3-2-22	CITY COMMENTS



SHEET TITLE:
DOWNSTREAM STORM DRAIN ANALYSIS
FUEL CITY TRAVEL CENTER
STATE HIGHWAY NO. 78 AT EUBANKS LANE
WILEY, TEXAS

JDJR PREPARED BY:
ENGINEERS & CONSULTANTS, INC.
TUBE REGISTRATION NUMBER F-6627

ENGINEERS • SURVEYORS • LAND PLANNERS
2606 Texas Drive Suite 100 Irving, Texas 76062
Tel 972-252-6167 Fax 972-252-6989

DATE: 6/21/21	DRAWN BY: JDJR	SHEET NO. C5C of 1
SCALE: 1" = 80'	CHECKED BY: JDJR	