



DATA SOURCES

BOUNDARY:	ON THE GROUND SURVEY (DGNIS)
MADE OF SURVEY:	WEB BASED/PUBLIC INFORMATION
ENCUMBRANCE:	FILE REPORTS/SCHEDULE B
ENCUMBRANCE:	WEB BASED/PUBLIC INFORMATION
TOPOGRAPHY:	ON THE GROUND SURVEY
TOPOGRAPHY:	VARGAS AERIAL TOPOGRAPHY
TOPOGRAPHY:	OTHER SOURCE (USGS, NAD83)
100 YEAR FLOOD PLAIN:	FLOOD STUDY
100 YEAR FLOOD PLAIN:	FEMA MAPS
100 YEAR FLOOD PLAIN:	WEB BASED/PUBLIC INFORMATION
PERMANENT WATER:	ON THE GROUND ANALYSIS
PERMANENT WATER:	WEB BASED/PUBLIC INFORMATION

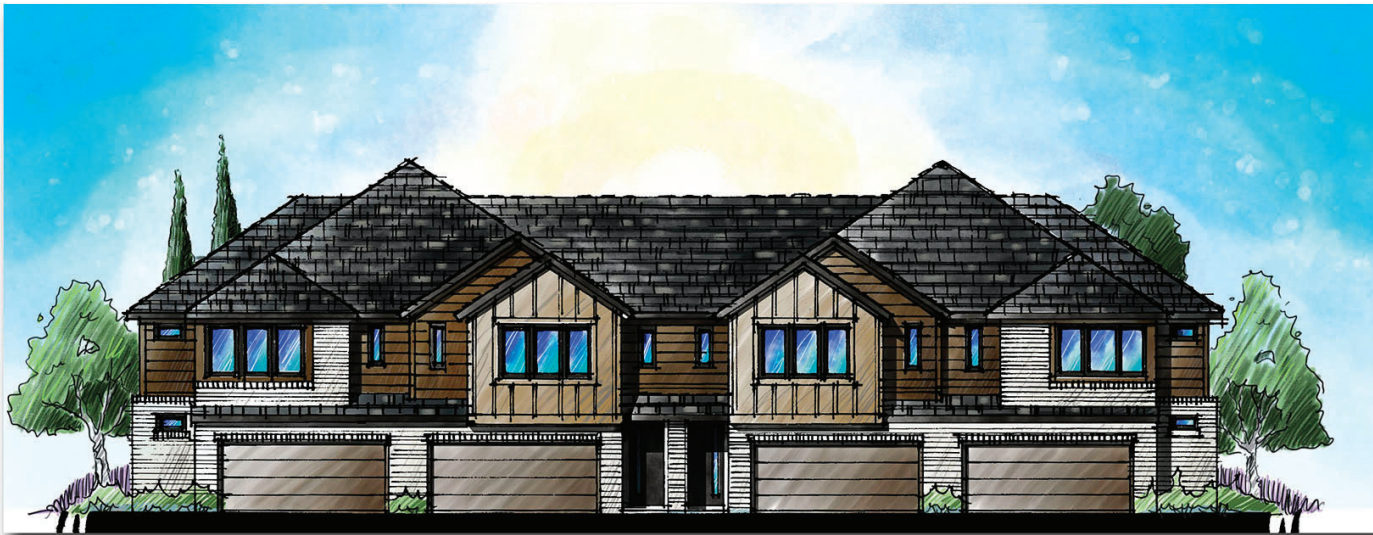
NEIGHBORHOOD DATA

LOT SIZE (TYPICAL) LOTS			
TYPE 1	25' x 95'	34	36%
TYPE 2	22' x 75'	61	64%
TOTAL		95	100%

0 30 60 120 N MAY 4, 2021
1"=60' FA1002

VILLAS ON PARK

CONCEPT PLAN **JBI**
WYLIE, TEXAS PARTNERS



TYPE 1 HOMES



TYPE 2 HOMES



NOTE: The images shown are representative of the homes which will be built in the Villas on Park and the actual designs are subject to change.

APR 1, 2021
FA1002

VILLAS ON PARK

CONCEPTUAL HOME ARCHITECTURE
WYLIE, TEXAS **JB**
PARTNERS

