

GENERAL ARCH SITE PLAN NOTES

- REFER TO CIVIL DOCUMENTS.
- COORDINATE ALL SPOT ELEVATIONS AND DIMENSIONS WITH CIVIL, LANDSCAPE, AND/OR STRUCTURAL DOCUMENTS.
- PROVIDE POSITIVE DRAINAGE AWAY FROM ALL BUILDINGS OF 1% MINIMUM 2% MAXIMUM AT ALL EXTERIOR PAVED/POSSIBLE AREAS, INCLUDING BUT NOT LIMITED TO SIDEWALKS, PATIOS, STAIRS, PAVING, ETC.
- PROVIDE AND INSTALL POSITIVE DRAINAGE AWAY FROM ALL BUILDINGS OF 5% FOR A HORIZONTAL DISTANCE OF 10 FEET AT ALL EXTERIOR NON-PAVED AREAS UNLESS OTHERWISE NOTED.
- REFER TO CIVIL DOCUMENTS FOR CONCRETE SIDEWALK EXPANSION JOINTS AND CONCRETE SIDEWALK CONTROL JOINTS.
- VERIFY AND CORRECT ALL JOINT LAYOUTS AT ALL CONCRETE SIDEWALKS WITH ARCHITECT PRIOR TO POURING OF CONCRETE.
- PROVIDE AND INSTALL CONCRETE SIDEWALK EXPANSION JOINTS AT AREAS NOT SPECIFICALLY INDICATED AT 30 FEET ON CENTER MAX. UNLESS OTHERWISE NOTED.
- PROVIDE AND INSTALL CONCRETE SIDEWALK CONTROL JOINTS AT AREAS NOT SPECIFICALLY INDICATED AT DISTANCES EQUIVALENT TO SIDEWALK WIDTH, BUT NOT TO EXCEED 10 FEET ON CENTER MAX.
- VERIFY ALL SITE SIGNAGE LOCATIONS WITH ARCHITECT PRIOR TO INSTALLATION OF SITE SIGNAGE.

PARKING COUNT		
PARKING TYPE	PARKING REQUIRED	PARKING ACTUAL
Handicap	6	16
Handicap Van	2	5
Standard	346	469
Total	354	491

PARKING REQUIREMENTS
15 PARKING SPACES - EACH INTERMEDIATE SCHOOL, CLASSROOM (40 CLASSROOMS)
7 PARKING SPACE - EACH JUNIOR HIGH SCHOOL, CLASSROOM (40)

TOTAL REQUIRED: 354

ACCESSIBLE PARKING SPACES, PER TAB. 208.2
401 - 500 REQUIRES A MINIMUM NUMBER OF 8 ACCESSIBLE SPACES, 2 OF THE 8 TO BE VAN

SITE DATA SUMMARY CHART

ZONING	EXISTING	PROPOSED
AD-20	AD-20	AD-20

LAND USE DESIGNATION: SCHOOLS

ACREAGE OF PROJECT: GROSS 48.315 AC, NET 47.463 AC, TRACT A & B

% OF BUILDING COVERAGE: 10.8% (223,127.65 SQ. FT. = 5.12 AC) / 47.463 = 10.8%

BUILDING DATA SUMMARY

TOTAL BUILDING AREA (FOOTPRINT)	IS	JHS
IS	86,608.98 SQ. FT.	124,521.57 SQ. FT.

MAX. BUILDING HEIGHT: 30'-0" (3-STORY - ALLOWABLE MAX HEIGHT 40')

SQUARE FOOTAGE BY USE: USE SQ. FT., SCHOOLS 223,127.65 SQ. FT.

TOTAL FLOOR AREA: 223,127.65 SQ. FT.

NUMBER OF PROPOSED LOTS: CURRENTLY 2 (TRACT A & B)

% IMPERVIOUS COVERAGE: 40.5%

% LANDSCAPED AREA: 51.5%

S.F. IMPERVIOUS COVERAGE: 1,002,321.47 SQ. FT. (23.0 ACRES)

BOUNDARY & TOPOGRAPHIC SURVEY
47.463 ACRES
WYLE INDEPENDENT SCHOOL DISTRICT
TRACT A & B
CITY OF WYLE
PARKIN COUNTY, TEXAS

TRACT A: CALLED 4.891 ACRES
WYLE INDEPENDENT SCHOOL DISTRICT
VOLUME 8676, PAGE 4152
S.D.C.T. 7

TRACT B: CALLED 44.711 ACRES
WYLE INDEPENDENT SCHOOL DISTRICT
VOLUME 8676, PAGE 4152
S.D.C.T. 7

ARCH SITE PLAN LEGEND

CONCRETE	PROPOSED TREE RE. LANDSCAPE
COMMUNITY TORNADO SHELTER <td>LIGHT POLE</td>	LIGHT POLE
NEW BUILDING <td>PROPERTY LINE</td>	PROPERTY LINE
HYDRO MULCH <td>CHAIN LINK FENCE</td>	CHAIN LINK FENCE
GRASS <td>ORNAMENTAL FENCE</td>	ORNAMENTAL FENCE
SYNTHETIC TURF <td>FIRE LANE</td>	FIRE LANE
MUSCO STADIUM LIGHTS <td>FLAG POLE</td>	FLAG POLE
VISIBILITY TRIANGLES <td>FIRE HYDRANT</td>	FIRE HYDRANT



1. REFERENCE TO CIVL DOCUMENTS.
2. COORDINATE ALL SPOT ELEVATIONS AND DIMENSIONS WITH CIVL, LANDSCAPE, AND/OR STRUCTURA DOCUMENTS.
3. PROVIDE POSITIVE DRAINAGE AWAY FROM ALL BUILDINGS OF 1/8" MINIMUM, 2" MAXIMUM AT ALL EXTERIOR PAVED PESTERIAL AREAS, INCLUDING BUT NOT LIMITED TO SIDEWALKS, PLAZAS, STAIRS, PAVING, LUNDS, ETC.
4. PROVIDE MINIMUM POSITIVE DRAINAGE AWAY FROM ALL BUILDINGS OF 5% FOR A HORIZONTAL DISTANCE OF 10 FEET AT ALL EXTERIOR NON-PAVED AREAS IN U.O.
5. REFERENCE DIMENSIONS FOR CONCRETE SIDEWALK EXPANSION JOINTS AND CONCRETE SIDEWALK JOINTS.
6. PROVIDE AND CONTROL JOINT LAYOUTS AT ALL CONCRETE SIDEWALKS WITH ARCHITECT PROJECT FOR FOUR INCHES CONCRETE.
7. PROVIDE AND INSTALL CONCRETE SIDEWALK EXPANSION JOINTS AT AREAS NOT SPECIFICALLY NOTICED IN THE PROJECT CENTER MAX. U.O.
8. PROVIDE AND INSTALL CONCRETE SIDEWALK JOINTS AT AREAS NOT SPECIFICALLY NOTICED AT DISTANCES EQUIVALENT TO SIDEWALK WIDTH, BUT NOT TO EXCEED 10 FEET ON CENTER.
9. VERIFY ALL SITE SIGNAGE LOCATIONS WITH ARCHITECT PROJECT FOR INSTALLATION OF SITE SIGNAGE.

PARKING COUNT		
PARKING TYPE	PARKING REQUIRED	PARKING ACTUAL
Handicap	6	16
Handicap Van	2	5
Standard	346	460
Total	354	481

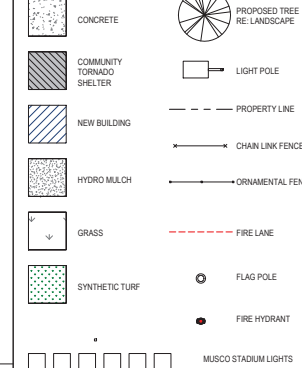
PARKING REQUIREMENTS
1.5 PARKING SPACE - EACH INTERMEDIATE SCHOOL CLASSROOM (40 CLASSROOMS)
7 PARKING SPACE - EACH JUNIOR HIGH SCHOOL CLASSROOM (42)

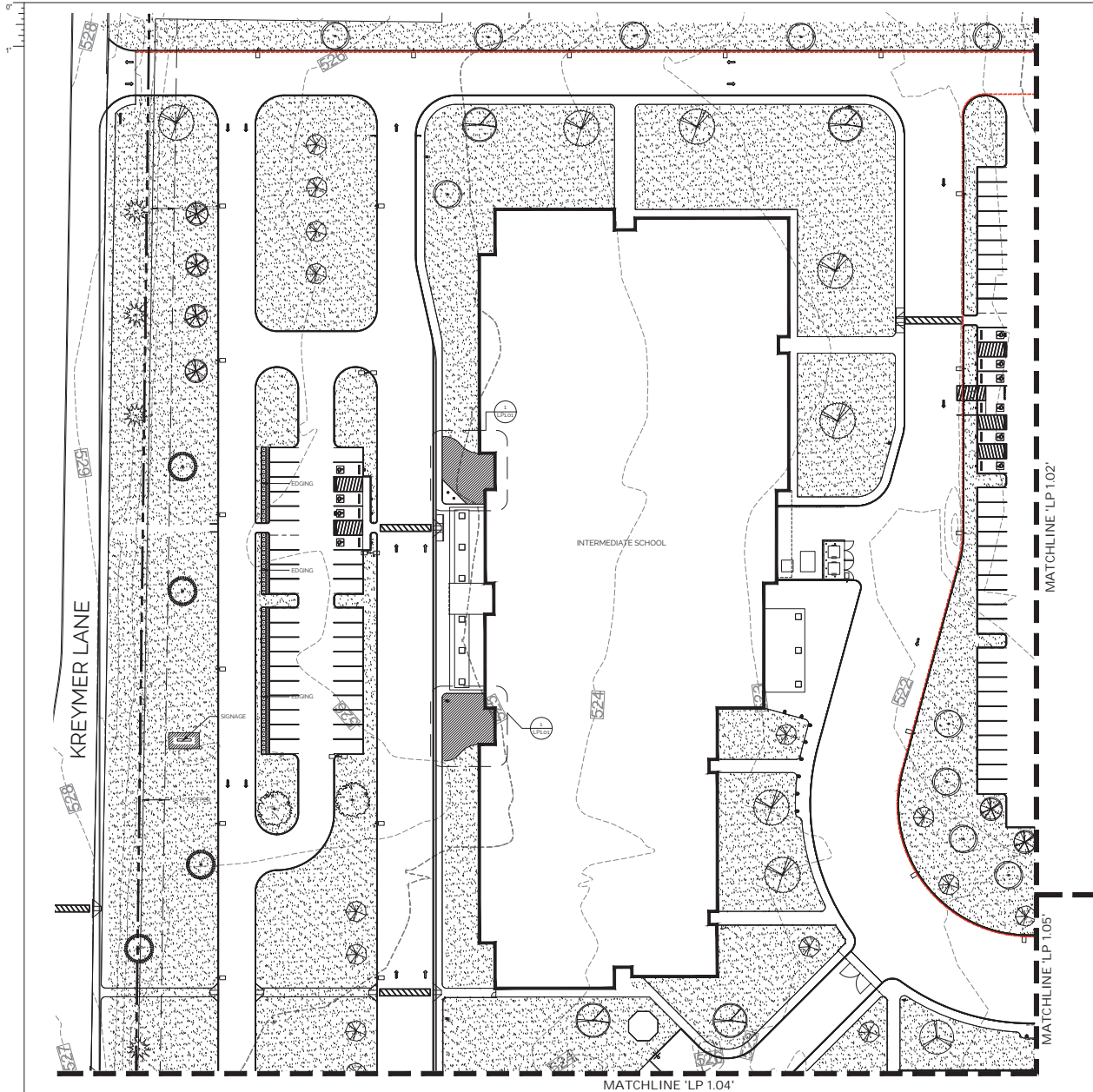
401 - 500 REQUIRES A MINIMUM NUMBER OF 8 ACCESSIBLE SPACES 2 OF THE 8 TO BE VAN

NUMBER	DESCRIPTION
--------	-------------

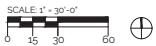
PART NO.	SIZE		QTY.	HARDWARE	REMARKS
	INCH	MM			
1	1/2	12.7	1	WASHER	
2	1/2	12.7	1	NUT	
3	1/2	12.7	1	WASHER	
4	1/2	12.7	1	NUT	
5	1/2	12.7	1	WASHER	
6	1/2	12.7	1	NUT	
7	1/2	12.7	1	WASHER	
8	1/2	12.7	1	NUT	
9	1/2	12.7	1	WASHER	
10	1/2	12.7	1	NUT	
11	1/2	12.7	1	WASHER	
12	1/2	12.7	1	NUT	
13	1/2	12.7	1	WASHER	
14	1/2	12.7	1	NUT	
15	1/2	12.7	1	WASHER	
16	1/2	12.7	1	NUT	
17	1/2	12.7	1	WASHER	
18	1/2	12.7	1	NUT	
19	1/2	12.7	1	WASHER	
20	1/2	12.7	1	NUT	
21	1/2	12.7	1	WASHER	
22	1/2	12.7	1	NUT	
23	1/2	12.7	1	WASHER	
24	1/2	12.7	1	NUT	
25	1/2	12.7	1	WASHER	
26	1/2	12.7	1	NUT	
27	1/2	12.7	1	WASHER	
28	1/2	12.7	1	NUT	
29	1/2	12.7	1	WASHER	
30	1/2	12.7	1	NUT	
31	1/2	12.7	1	WASHER	
32	1/2	12.7	1	NUT	
33	1/2	12.7	1	WASHER	
34	1/2	12.7	1	NUT	
35	1/2	12.7	1	WASHER	
36	1/2	12.7	1	NUT	
37	1/2	12.7	1	WASHER	
38	1/2	12.7	1	NUT	
39	1/2	12.7	1	WASHER	
40	1/2	12.7	1	NUT	
41	1/2	12.7	1	WASHER	
42	1/2	12.7	1	NUT	
43	1/2	12.7	1	WASHER	
44	1/2	12.7	1	NUT	
45	1/2	12.7	1	WASHER	
46	1/2	12.7	1	NUT	
47	1/2	12.7	1	WASHER	
48	1/2	12.7	1	NUT	
49	1/2	12.7	1	WASHER	
50	1/2	12.7	1	NUT	
51	1/2	12.7	1	WASHER	
52	1/2	12.7	1	NUT	
53	1/2	12.7	1	WASHER	
54	1/2	12.7	1	NUT	
55	1/2	12.7	1	WASHER	
56	1/2	12.7	1	NUT	
57	1/2	12.7	1	WASHER	
58	1/2	12.7	1	NUT	
59	1/2	12.7	1	WASHER	
60	1/2	12.7	1	NUT	
61	1/2	12.7	1	WASHER	
62	1/2	12.7	1	NUT	
63	1/2	12.7	1	WASHER	
64	1/2	12.7	1	NUT	
65	1/2	12.7	1	WASHER	
66	1/2	12.7	1	NUT	
67	1/2	12.7	1	WASHER	
68	1/2	12.7	1	NUT	
69	1/2	12.7	1	WASHER	
70	1/2	12.7	1	NUT	
71	1/2	12.7	1	WASHER	
72	1/2	12.7	1	NUT	
73	1/2	12.7	1	WASHER	
74	1/2	12.7	1	NUT	
75</					

MARK	M	H	W	WT	SET	REMARKS
F101	20.0	0.0	0.0	Met	Chulalongkorn	PILOT LOG
F102	20.0	0.0	0.0	Met	Chulalongkorn	MANUAL OPERATION, PAN HARDWARE
MC 101	12.0	1.0	1.0	Met	Chulalongkorn	MANUAL OPERATION, PAN HARDWARE
MC 102	12.0	1.0	1.0	Met	Chulalongkorn	MANUAL OPERATION
JH1101	12.0	0.0	0.0	Met	Chulalongkorn	MANUAL OPERATION
JH1102	12.0	0.0	0.0	Met	Chulalongkorn	MANUAL OPERATION
PI01	3.0	0.0	0.0	Met	Chulalongkorn	MANUAL OPERATION, PAN HARDWARE
PI02	3.0	0.0	0.0	Met	Chulalongkorn	MANUAL OPERATION, PAN HARDWARE
PI03	3.0	0.0	0.0	Met	Chulalongkorn	MANUAL OPERATION, PAN HARDWARE
PI04	3.0	0.0	0.0	Met	Chulalongkorn	MANUAL OPERATION, PAN HARDWARE
1201	3.0	0.0	0.0	Met	Chulalongkorn	MANUAL OPERATION, PAN HARDWARE
1202	3.0	0.0	0.0	Met	Chulalongkorn	MANUAL OPERATION, PAN HARDWARE
1203	3.0	0.0	0.0	Met	Chulalongkorn	MANUAL OPERATION, PAN HARDWARE
1204	3.0	0.0	0.0	Met	Chulalongkorn	MANUAL OPERATION, PAN HARDWARE





LANDSCAPE PLAN



PLANT SYMBOL LEGEND

TREES

- CEDEAR ELM
- LIVE OAK
- RED OAK
- ELDIABICA PINE
- AUTUMN BLAZE MAPLE
- DRIVE ELM
- CHASTE TREE
- BURGUNDY HEARTS REDBUD

SCREEN SHRUBS

- DWARF YAUPOIN HOLLY

SMALL PERENNIALS / G.C. / VINES

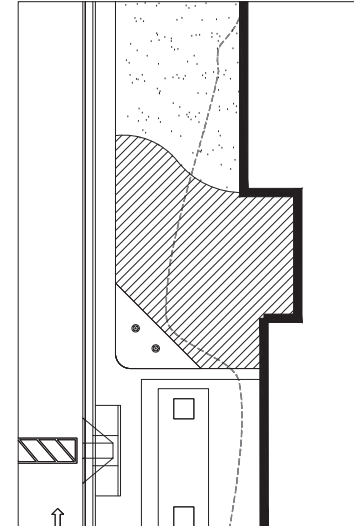
- PROPOSED BED

TURF

- BERMUDA SOD

OTHER

- DECOMPOSED GRANITE
- STEEL EDGE



1 PLANTER AREA ENLARGEMENT
2'-0" x 2'-0"



ARCHITECT	PBK ARCHITECTS, INC.
DALLAS	
14001 Dallas Parkway, Suite 400	
Dallas, TX 75240	
972-253-1270	
972-253-1271 F	
13.7 miles SW 1606	

WYLIE NEW INTERMEDIATE AND JUNIOR HIGH SCHOOL SITE PLAN



KEY PLAN



Interim review documents. Not for
regulatory approval, permitting or
construction.
Jeremy D. Blad
Texas RLA No. 2734

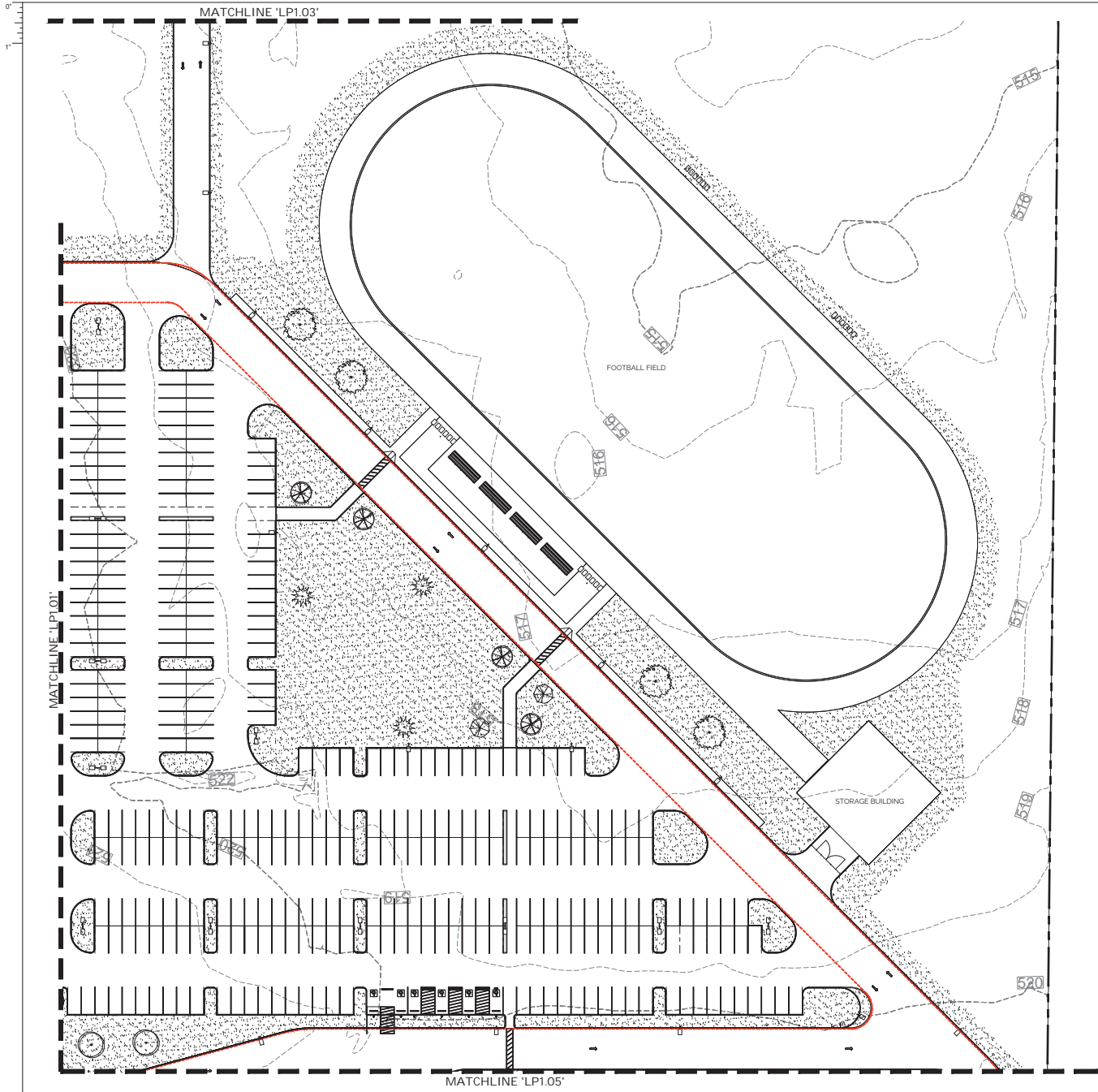
CLIENT		
Wylie Independent School District		
DATE		PROJECT NUMBER
2024/09/16		240112
DRAWING HISTORY		
No.	Description	Date

CHECKED BY: JB

DRAWN BY: RS

LANDSCAPE PLAN

LP 1.01



- PLANT SYMBOL LEGEND**
- TREES**
- CEADAR ELM
 - LIVE OAK
 - RED OAK
 - ELDIARICA PINE
 - AUTUMN BLAZE HARLE
 - DRAME ELM
 - CHASTE TREE
 - BURGUNDY HEARTS REDBUD
- SCREEN SHRUBS**
- DWARF YAUPOIN HOLLY
- SMALL PERENNIALS / G.C. / VINES**
- PROPOSED BED
- TURF**
- BERMUDA SOD
- OTHER**
- DECOMPOSED GRANITE
 - STEEL EDGE

ARCHITECT PBK Architects, Inc.
DALLAS
14001 Dallas Parkway, Suite 400
Dallas, TX 75240
972-233-1237
972-233-1373 F
13.7 miles SW 1608

WYLIE NEW INTERMEDIATE AND JUNIOR HIGH SCHOOL SITE PLAN

PLANNING AND ZONING

KEY PLAN

NORTH PLAN TREE

Interim review documents. Not for regulatory approval, permitting or construction.
Jeremy D. Blad
Texas RLA No. 2734

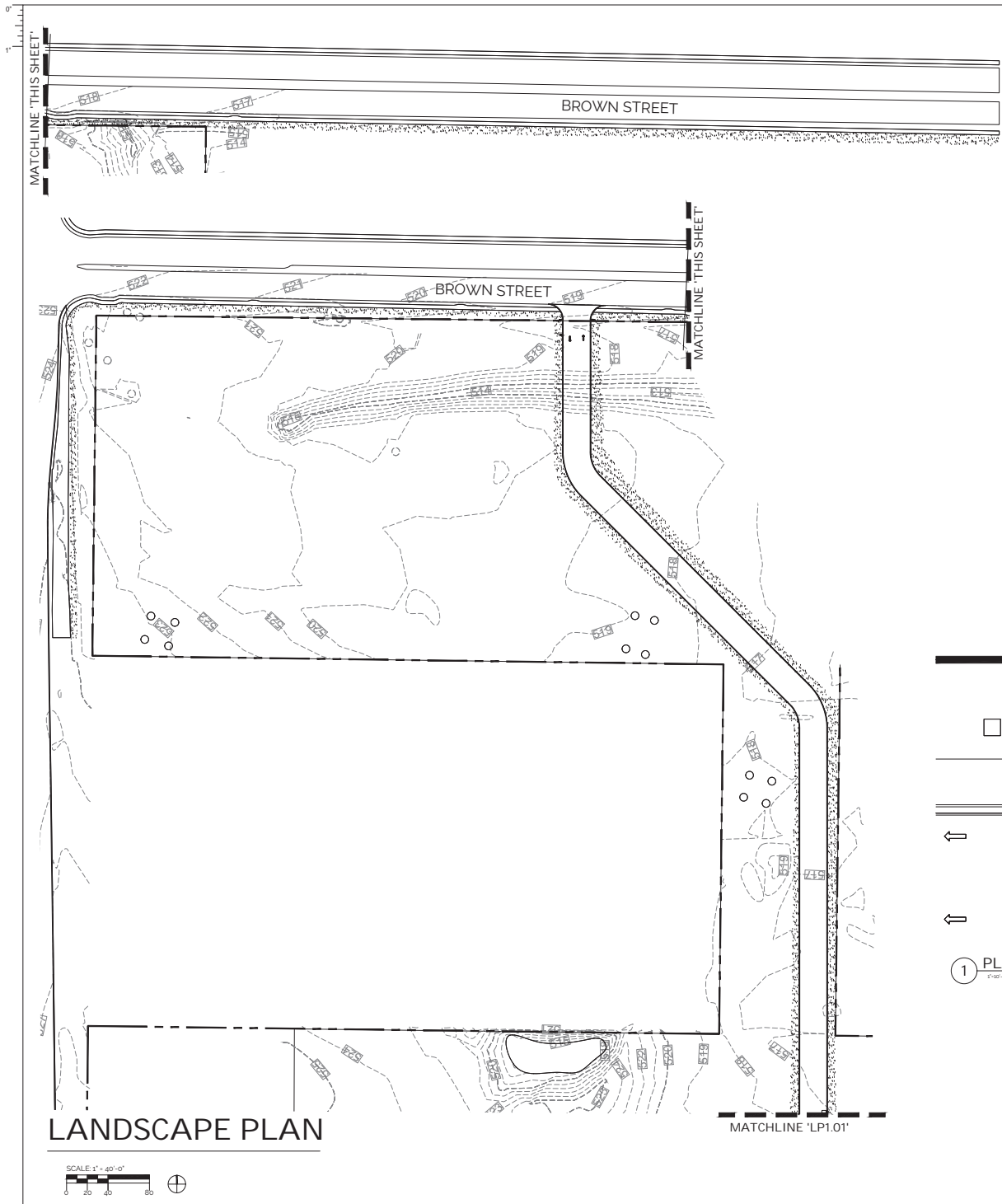
CLIENT Wylie Independent School District
DATE 2024/09/16
PROJECT NUMBER 240112

DRAWING HISTORY		
No.	Description	Date

CHECKED BY: JB
DRAWN BY: RS

LANDSCAPE PLAN

LP 1.02



- PLANT SYMBOL LEGEND**
- TREES**

 - CEDAR ELM
 - LIVE OAK
 - RED OAK
 - ELDIRICA PINE
 - AUTUMN BLAZE MAPLE
 - DRAKE ELM
 - CHASTE TREE
 - BURKANDY HEARTS REDBLOOM

SCREEN SHRUBS

 - DWARF YAUPOON HOLLY

SMALL PERENNIALS / G.C. / VINES

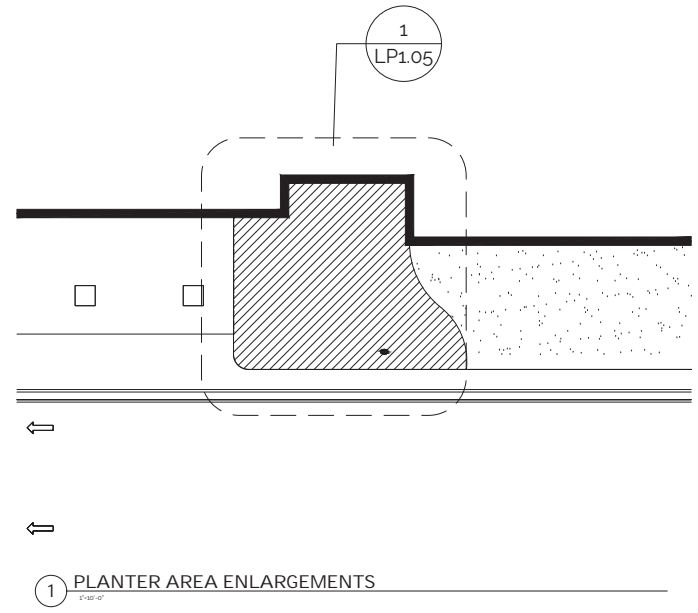
 - PROPOSED BED

TURF

 - BERMUDA SOD

OTHER

 - DECOMPOSED GRANITE
 - STEEL EDGE



PBK ARCHITECTS, INC.
 DALLAS
 14001 Dallas Parkway, Suite 400
 Dallas, TX 75240
 972-253-1275
 972-253-1273 F
 12.7 Mile, 68E 160E

WYLIE NEW INTERMEDIATE AND JUNIOR HIGH SCHOOL SITE PLAN

PLANNING AND ZONING

KEY PLAN

NORTH PLAN TREE

Interim review documents. Not for regulatory approval, permitting or construction.
 Jeremy D. Blod
 Texas RLA No. 2734

CLIENT
 Wylie Independent School District

DATE
 2024/09/16

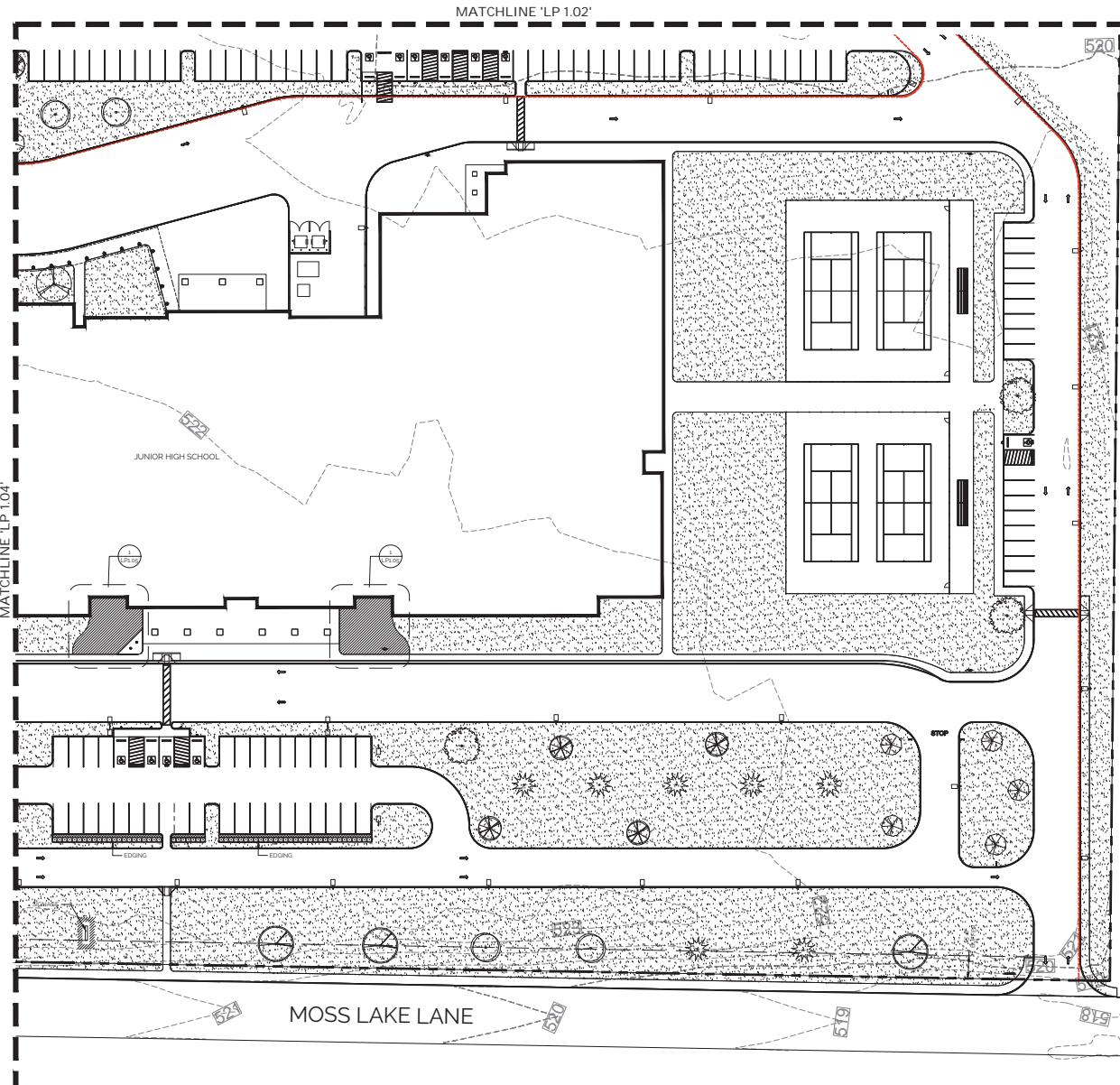
PROJECT NUMBER
 240112

DRAWING HISTORY		
No.	Description	Date

CHECKED BY: JB
DRAWN BY: RS

LANDSCAPE PLAN

LP 1.03



PLANT SYMBOL LEGEND

TREES

- CEDEAR ELM
- LIVE OAK
- RED OAK
- ELDIARICA PINE
- AUTUMN BLAZE MAPLE
- DRIVE ELM
- CHASTE TREE
- BURGUNDY HEARTS REDBUD

SCREEN SHRUBS

- DWARF YAUPOON HOLLY

SMALL PERENNIALS / G.C. / VINES

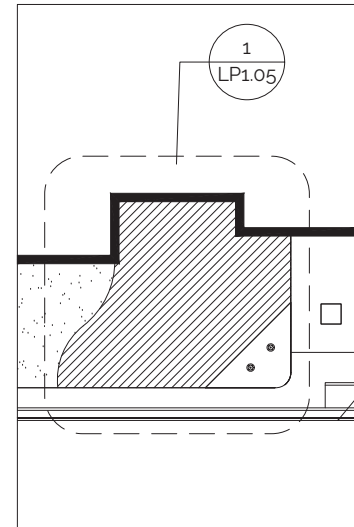
- PROPOSED BED

TURF

- BERMUDA SOD

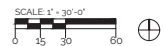
OTHER

- DECOMPOSED GRANITE
- STEEL EDGE



1 PLANTER AREA ENLARGEMENT
1" = 10'-0"

LANDSCAPE PLAN



ARCHITECT
DALLAS
14001 Dallas Parkway, Suite 400
Dallas, TX 75240
972-233-1234
972-233-1373 F
13.7 Mile, RR 1608

WYLIE NEW INTERMEDIATE AND JUNIOR HIGH
SCHOOL SITE PLAN

PLANNING AND ZONING



KEY PLAN
NORTH
PLAN
TREE

Interim review documents. Not for
regulatory approval, permitting or
construction.
Jeremy D. Blad
Texas RLA No. 2734

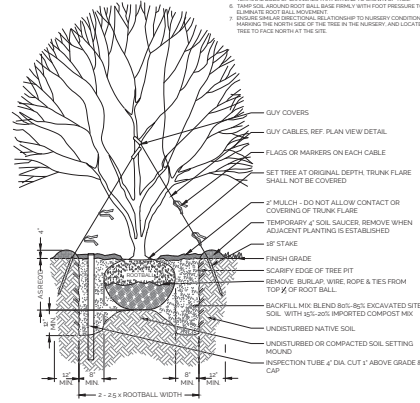
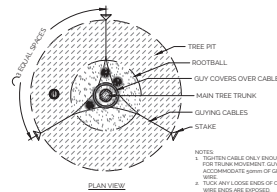
CLIENT		
Wylie Independent School District		
DATE		PROJECT NUMBER
2024/09/16		240112
DRAWING HISTORY		
No.	Description	Date

CHECKED BY: JB

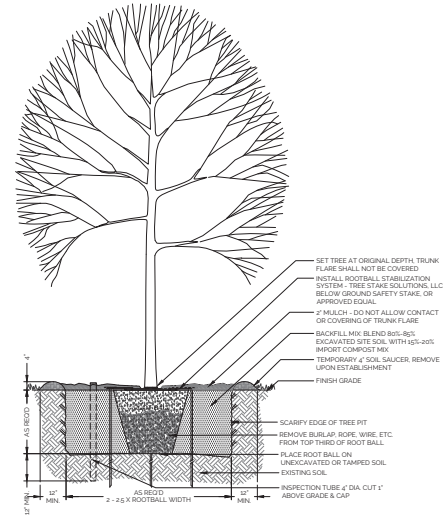
DRAWN BY: RS

LANDSCAPE PLAN

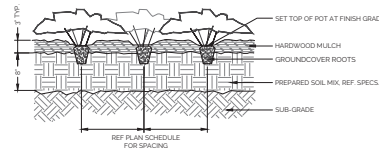
LP 1.05



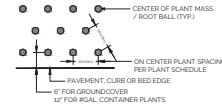
1 MULTI-STEM TREE PLANTING
1/2" = 1'-0"



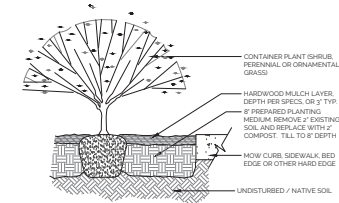
2 SHADE TREE PLANTING
1/2" = 1'-0"



3 GROUND COVER PLANTING
1/2" = 1'-0"



4 PLANT SPACING
1/4" = 1'-0"

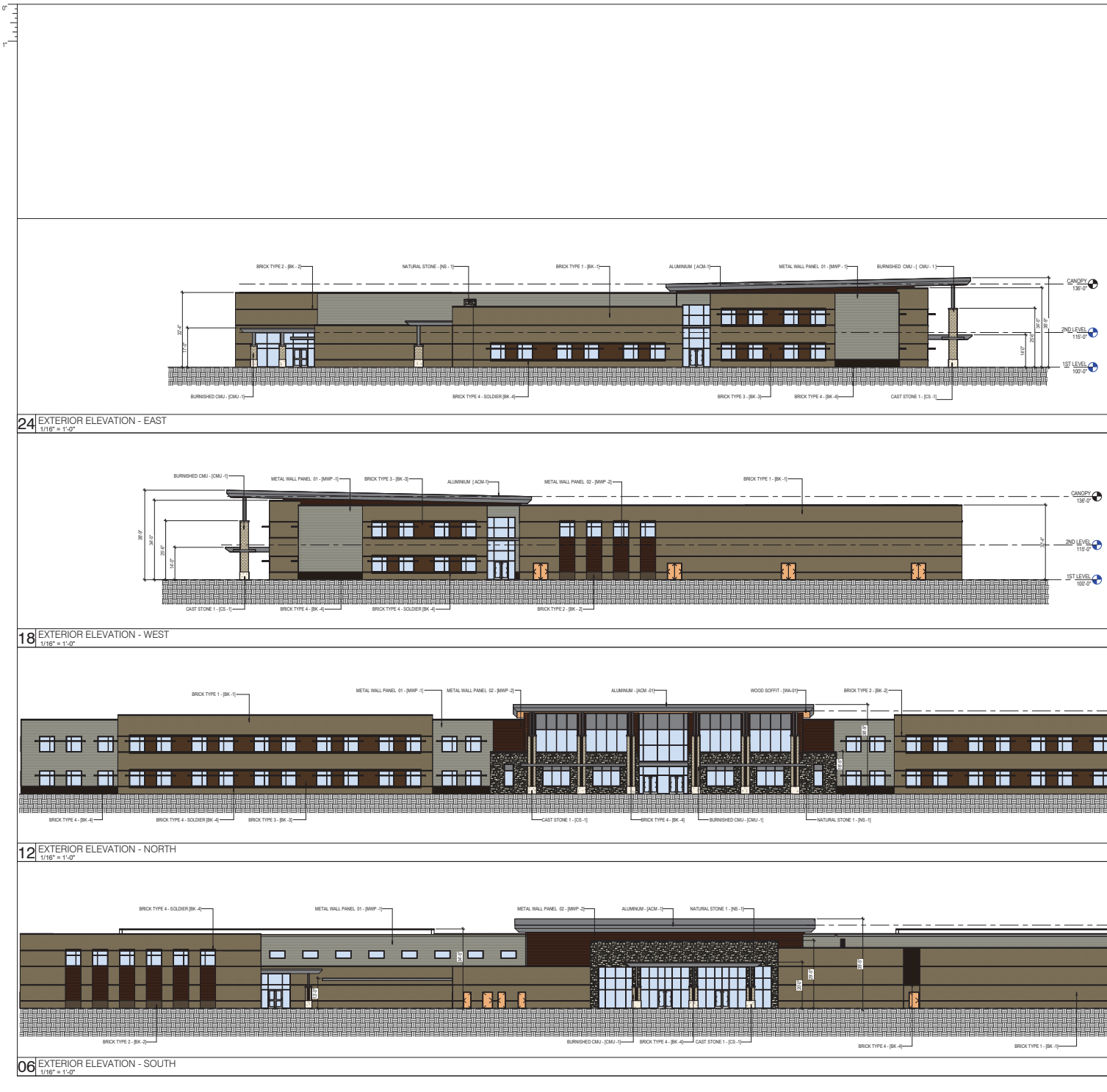


5 CONTAINER PLANTING
1/4" = 1'-0"





A-501A



- ### GENERAL ELEVATION NOTES
1. ALL BUILDING EXPANSION JOINT TO BE 1\"/>

KEYNOTE LEGEND

NUMBER	DESCRIPTION
--------	-------------

EXTERIOR MATERIALS LEGEND

BK1 (R) BRICK TYPE 1, RUNNING BOND	WWP - 01 FLUSH WALL PANEL
BK2 (R) BRICK TYPE 2, RUNNING BOND	WWP - 02 METAL WALL PANEL
BK3 (R) BRICK TYPE 3, RUNNING BOND	ACM - 1 ALUMINUM
BK4 (R) BRICK TYPE 4, RUNNING BOND	WS - 1 WOOD SOFFIT
BK4 (S) BRICK TYPE 4, SOLDIER COURSE	
CS - 01 CAST STONE	
NS - 01 NATURAL STONE	
CMU - 01 BURNISHED CMU	

ARCHITECT: PBK Architects, Inc.
1401 Dallas Parkway, Suite 400
Dallas, TX 75244
972-253-1234
972-253-1235 F
972-253-1236

WYLE NEW JHS
25% CONSTRUCTION DOCUMENTS

WYLE

D	E	F	G
C	B	A	

KEY PLAN
NORTH
PLAN
TITLE

INTERIM NOTIFICATION
Daniel Stuart Berger
Architectural Registration No. 25370
These documents are incomplete
and are for information review only,
and may not be used for
regulatory approval, permit, or
construction.

CLIENT
Wyle Independent School District
DATE: 2024/08/28
PROJECT NUMBER: 240112
DRAWING HISTORY
No. Description Date
CHECKED BY: Checker
DRAWN BY: Author
JHS EXTERIOR ELEVATIONS - P & Z
A-501B