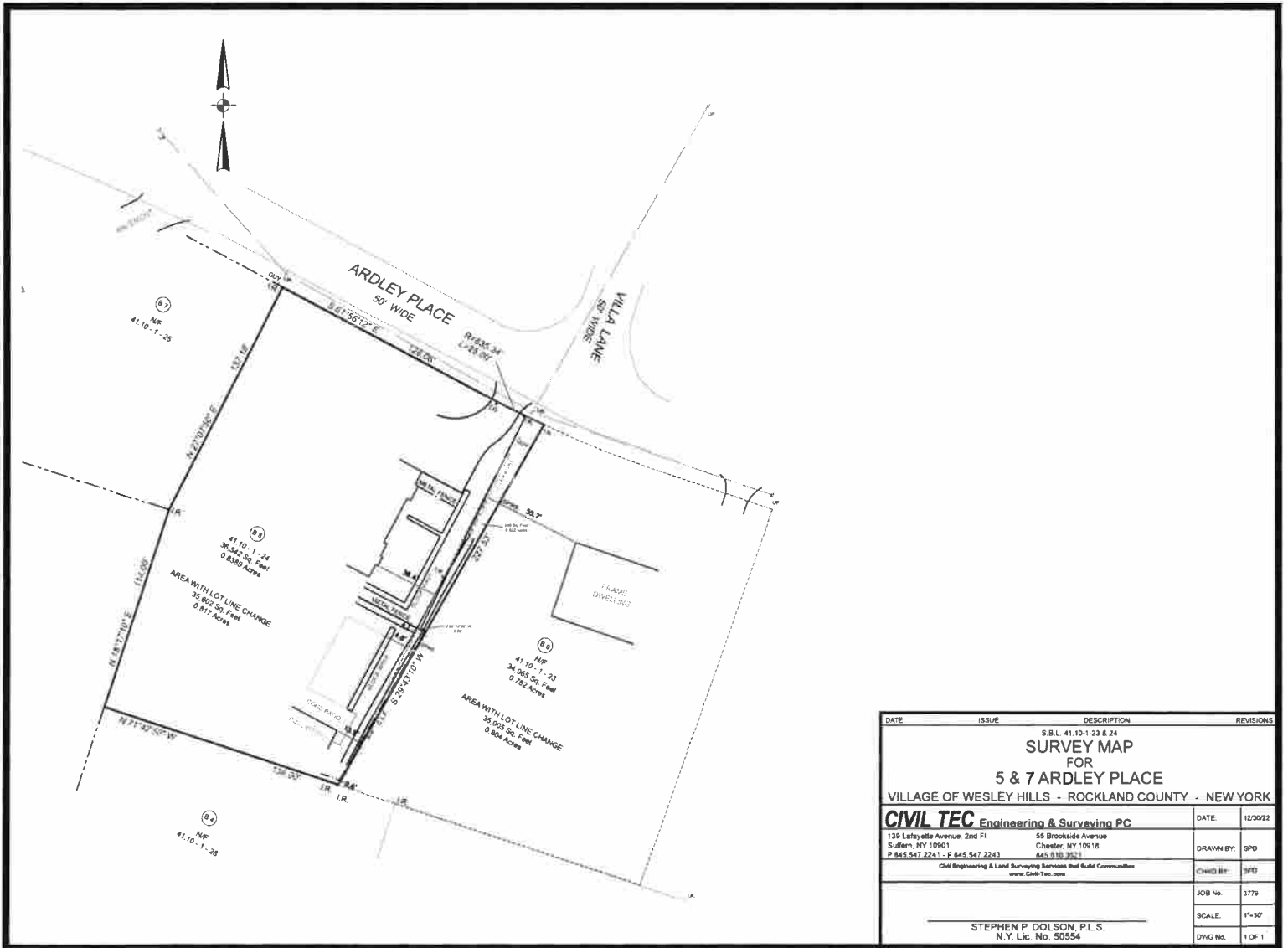


BUILDING DEPT.

DEC 6 2023

VILLAGE OF WESLEY HILLS



DATE	ISSUE	DESCRIPTION	REVISIONS
S.B.L. 41.10-1-23 & 24 SURVEY MAP FOR 5 & 7 ARDLEY PLACE VILLAGE OF WESLEY HILLS - ROCKLAND COUNTY - NEW YORK			
CIVIL TEC Engineering & Surveying PC 139 Lafayette Avenue, 2nd Fl. Sullien, NY 10961 P. 845.547.2241 - F. 845.547.2243			DATE: 12/20/22 DRAWN BY: SPD
55 Brookside Avenue Chester, NY 10916 845.810.3571 <small>Civil Engineering & Land Surveying Services that Build Communities www.Civil-Tec.com</small>			CHG BY: SPD JOB No. 3779
STEPHEN P. DOLSON, P.L.S. N.Y. Lic. No. 50554			SCALE: 1"=30' DWG No. 1 OF 1