



# Wimberley Valley Trails

---

SMALL GROUP DISCUSSIONS

1/29/2021

Downtown Core/ Businesses

---

# Project Team



James Sassin, Project Manager

Mark Miller



Summer Lawton



Commissioner Lon Shell

Jerry Borcharding

Lindsay McClune

Winton Porterfield



THE GOODMAN  
CORPORATION

Robert McHaney



Walter Heard

Marc Zak



Claudia Arniella

Natalia Riusech

---

# Agenda

1

Project Overview

2

Timeline and Public Involvement

3

Proposed Concepts

4

Discussion

5

Next Steps



# Project Background

Wimberley Valley Trails aims to develop a multi-year vision to **improve connectivity, safety, and mobility** in the cities of Wimberley and Woodcreek.

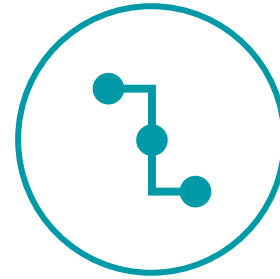
This vision includes a system of **hike and bike trails**, a variety of **transportation and mobility options**, and other strategies to help connect people with nature and link points of interest in the community.



Involve the community in the planning efforts.



Develop a design based on the history, culture, and natural environment of the region.



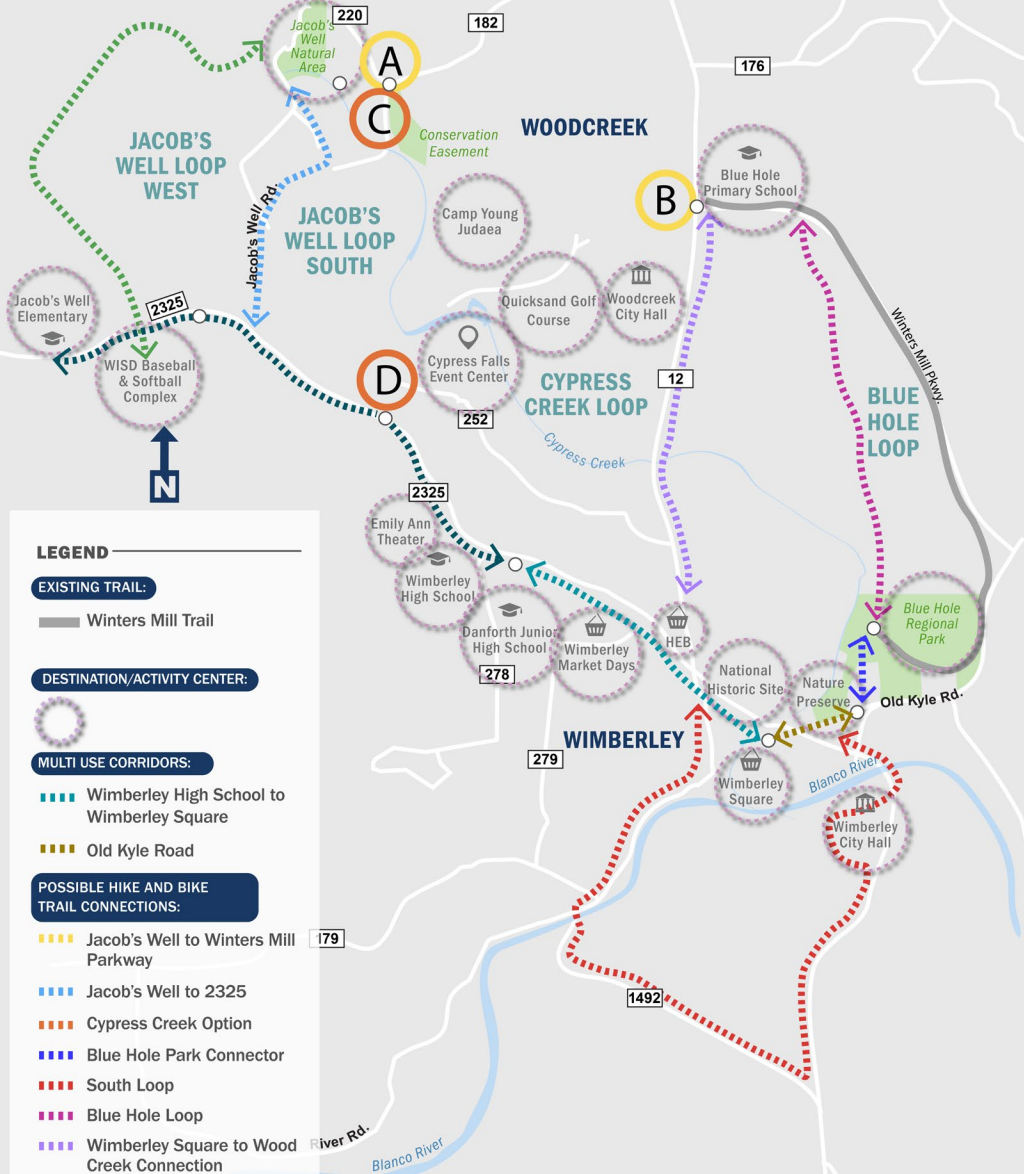
Improved connections to points of interests such as parks, schools, and local businesses.



Improve safety, mobility, and connectivity.



DRAFT



Wimberley Valley Trails Master Plan - Preliminary Routing  
 Graphic Plan 10/29/20 DRAFT NOT FOR DISTRIBUTION

# Project Focus



Develop a **Master Plan** for walking, hiking, driving, and other transportation options connect points of interest including Blue Hole Park, Wimberley Square, and Jacobs Well.



Identify improvements and design sidewalks and trails along Old Kyle Road and Ranch Road 2325 to Wimberley Square.



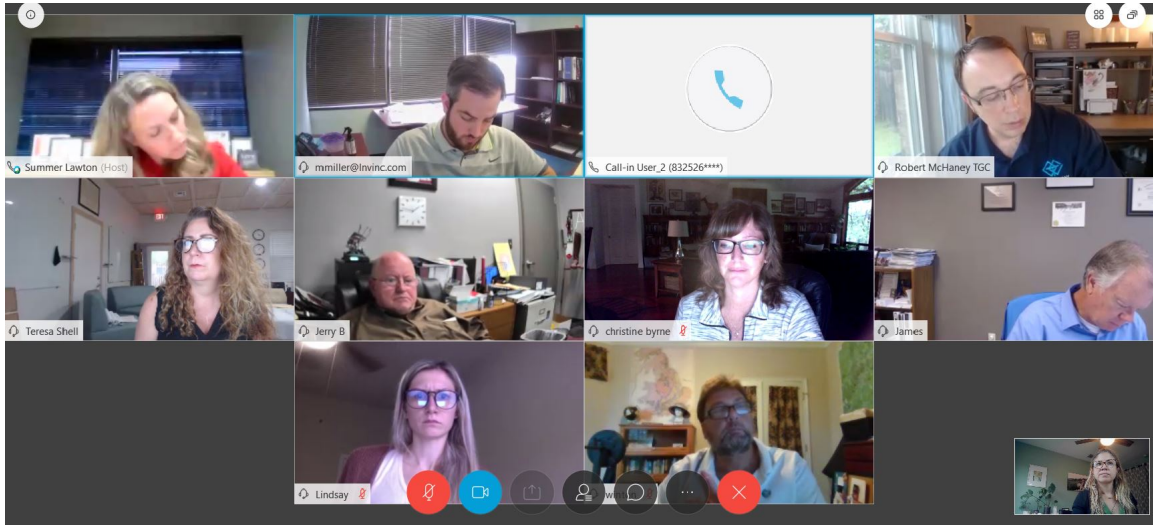
# Project Timeline

The project began July 2020 and will continue through Spring 2021.



# Public Involvement Activities

- Small group discussions – ongoing
- Meetings with elected officials – ongoing
- Property owner discussions – ongoing
- Upcoming public meeting – Feb. 25, 2021
- Surveys and open comments – Feb. 24 – March 24, 2021



## KEY STAKEHOLDERS



Elected officials and staff of Hays County, Wimberley, and Woodcreek



Property owners and businesses



Wimberley ISD, Wimberley Chamber of Commerce



Homeowners' associations and community groups



Environmental groups; Cycling/active transportation community



# Qualifying for Local, State and Federal Funding

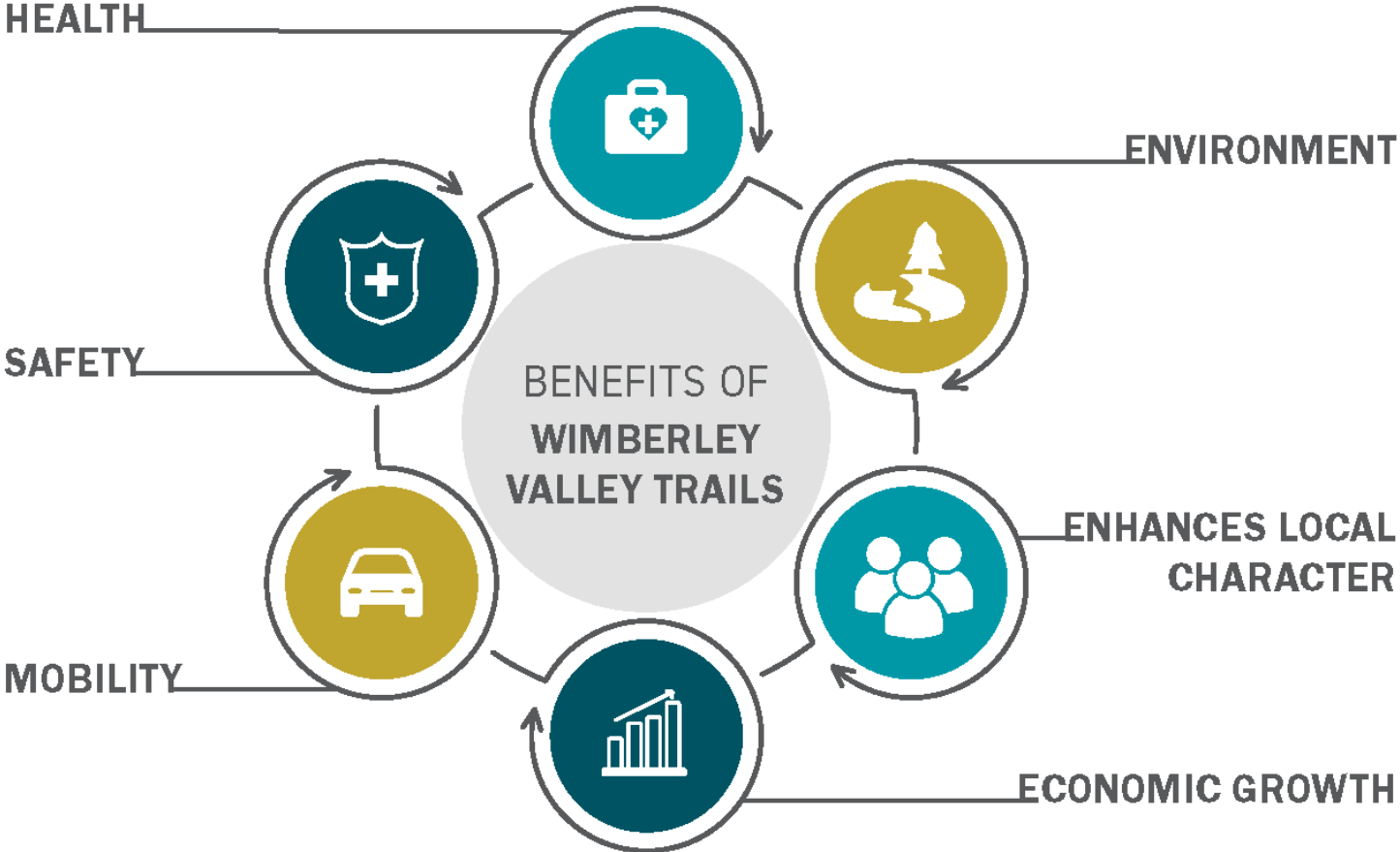
Hays County and the City of Wimberley are actively pursuing funding opportunities including funding from:

- US Department of Transportation
- Texas Department of Transportation (TxDOT)
- Capital Area Metropolitan Areas (CAMPO)
- Texas Parks and Wildlife





# Why Trails Matter





# Enhance Local Character and Local Investment







# Health Physical Activity and Access to Nature

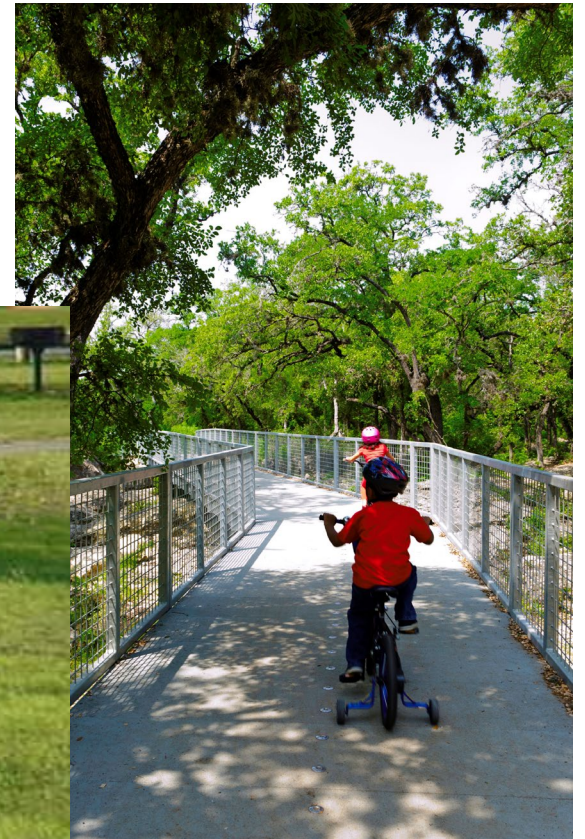






# Safety

## Socialization and Quality of Life







# Mobility Multi-modal Transportation System

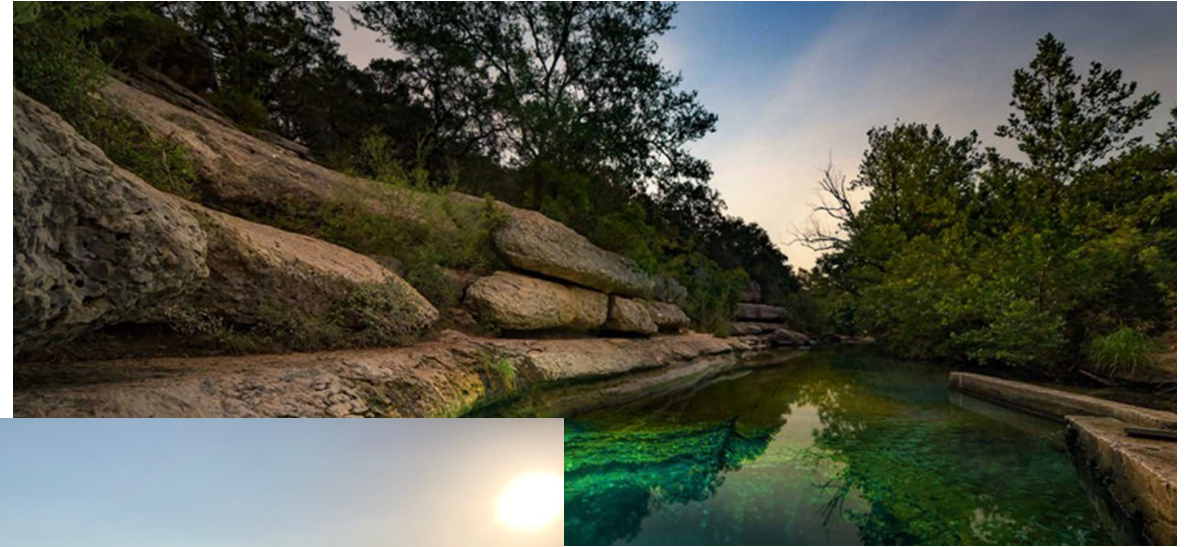






# Environment

## Enhanced ROW and Protected Trails







# Economic Growth Benefits to Visitors and Businesses





---

# Proposed Connections Discussion

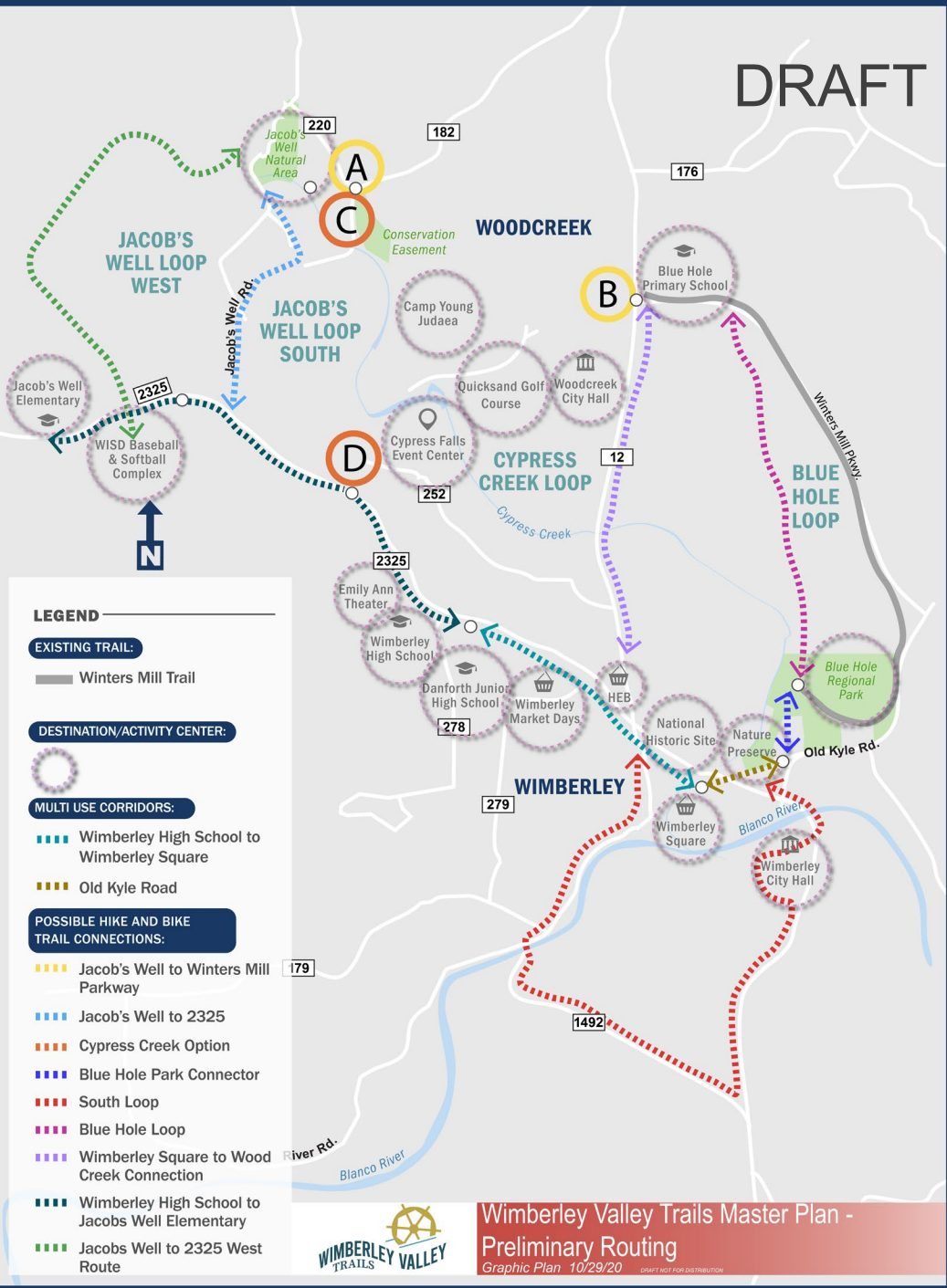


DRAFT

# Master Trail Network

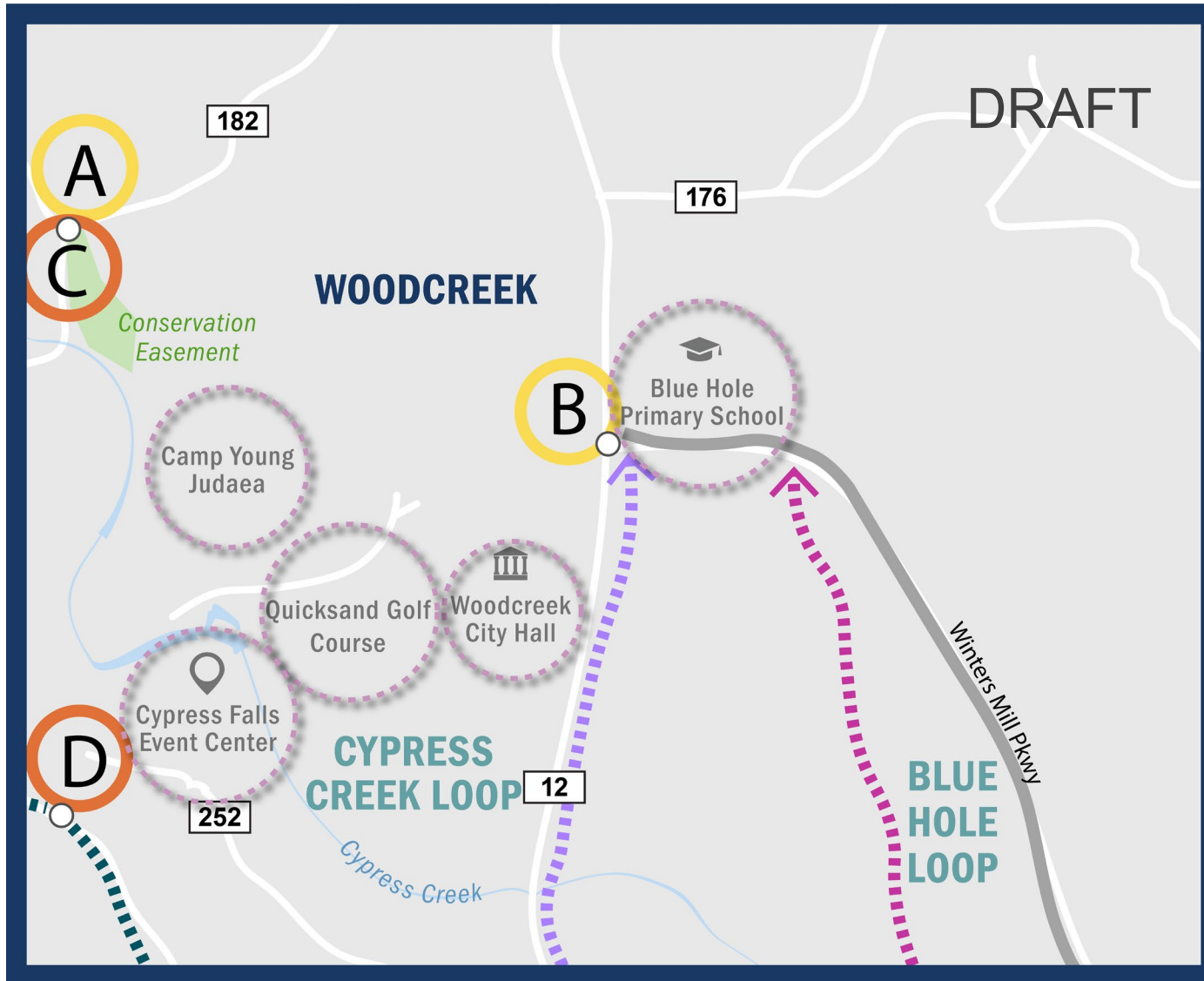
This draft map shows connections between existing trails and key destinations with the intent to provide safe, reliable transportation and mobility options.

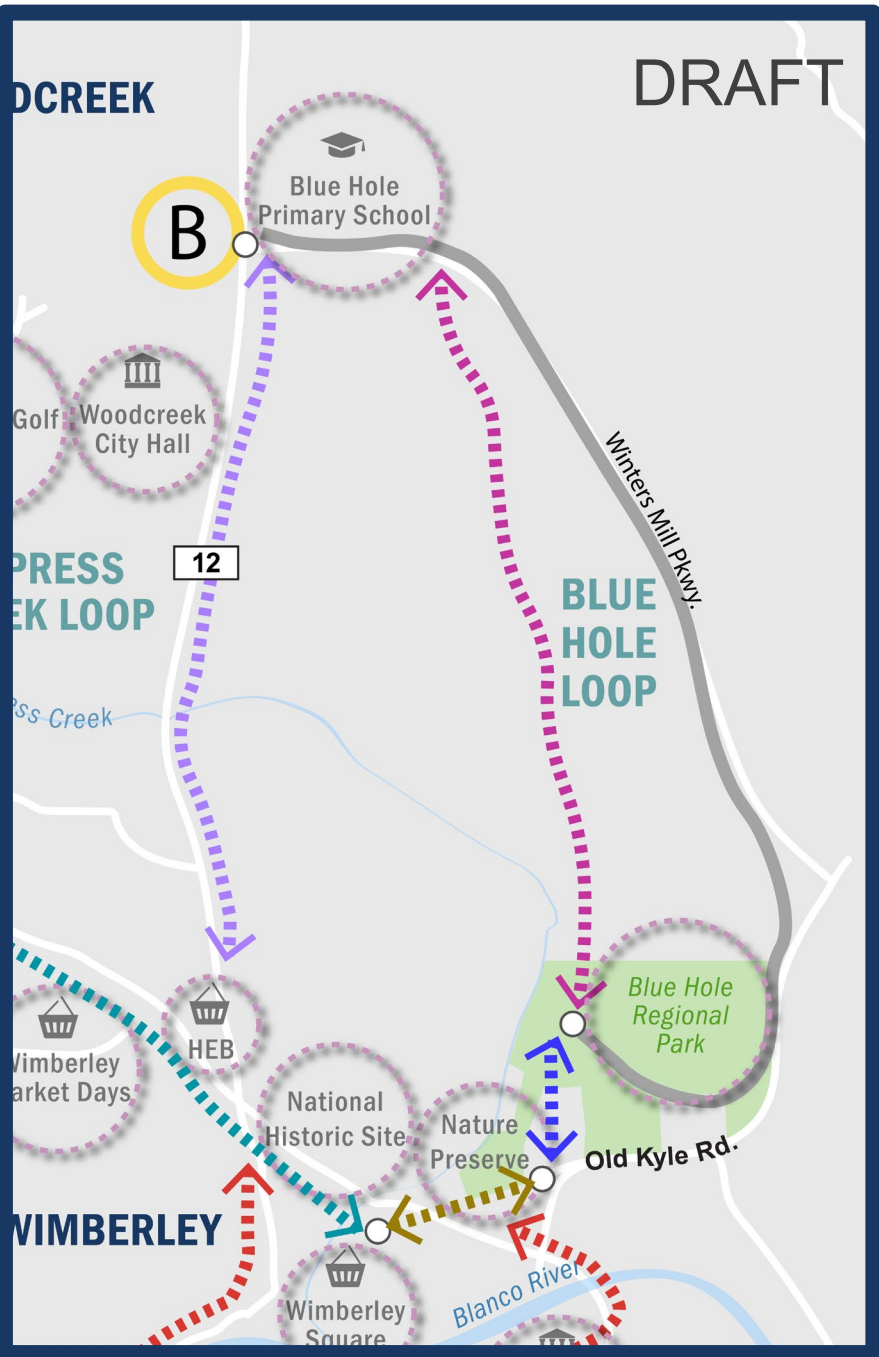
They are designed to complement and enrich neighborhood character, highlight historic and cultural resources, and respect privacy and security of adjacent properties.



*Making Wimberley Wonderful Presentation - Bert Ray*

# Woodcreek and Cypress Creek area



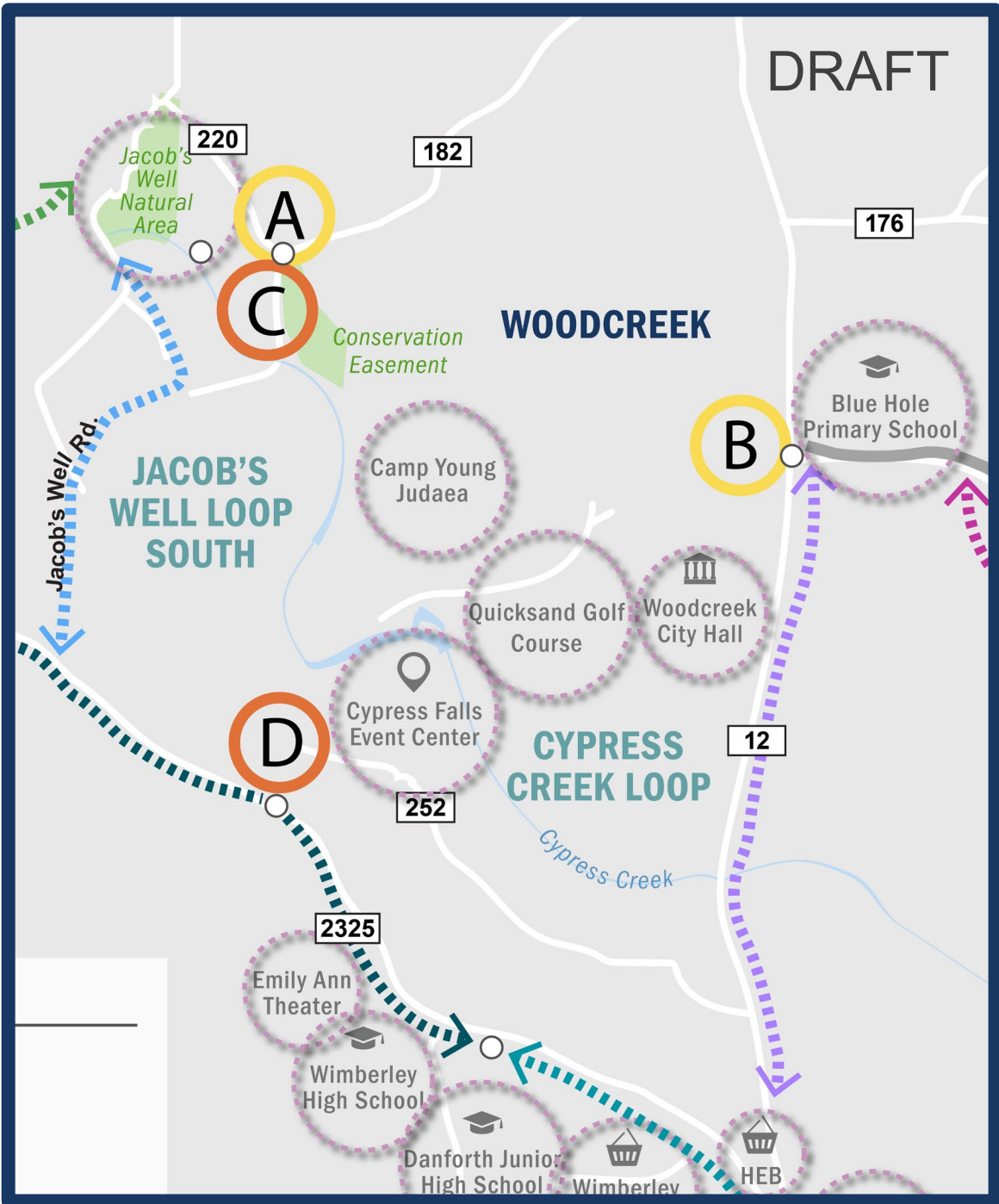


# Blue Hole Park

## Existing Wood Creek Connector

- Pursuing **Safe Routes to School** funding to improve walking safety and access between schools, major roads, and destinations.
- Possible return trail in dry creek bed to create a 4-mile loop.

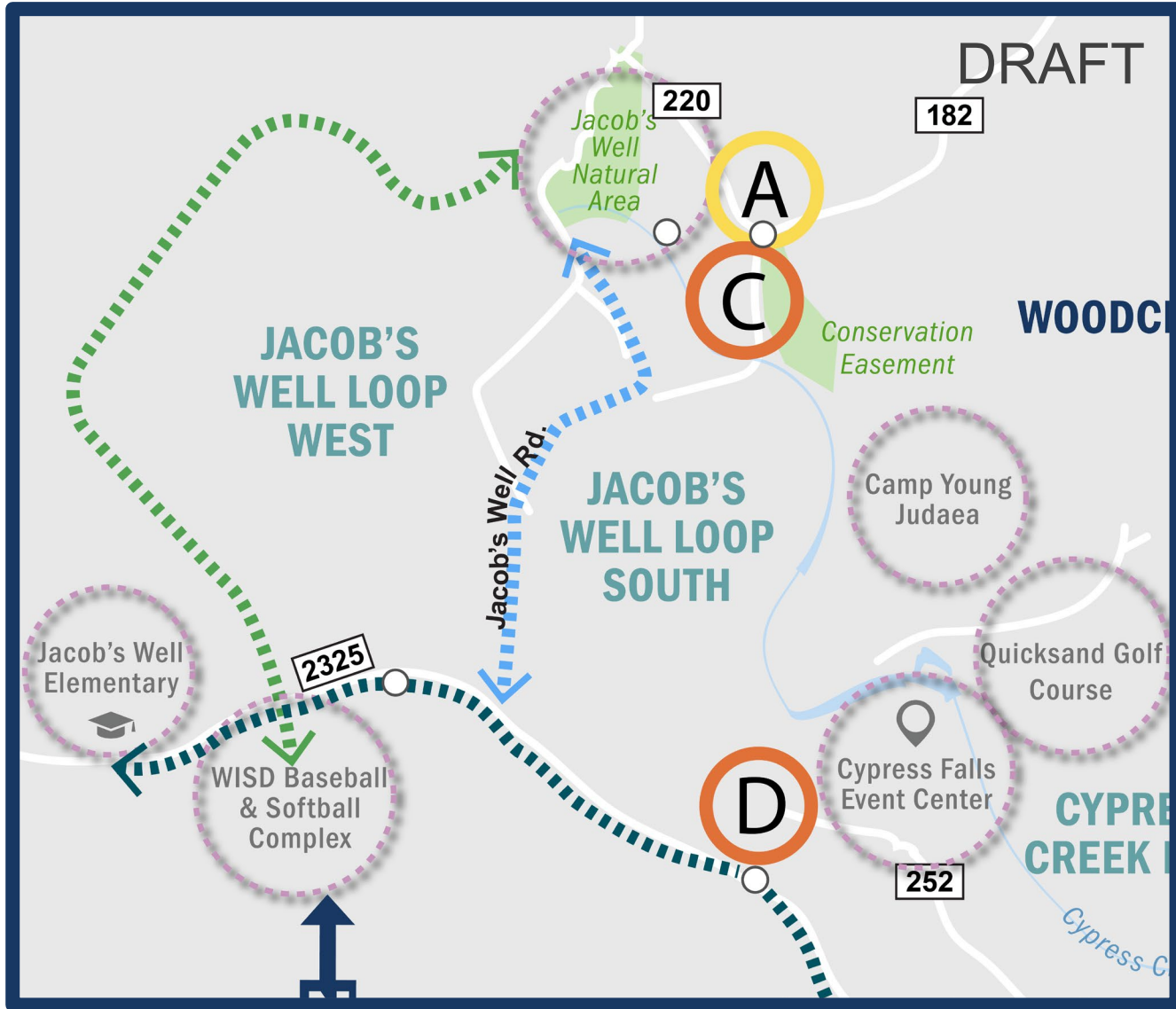




# Blue Hole Primary School Jacob's Well Connector

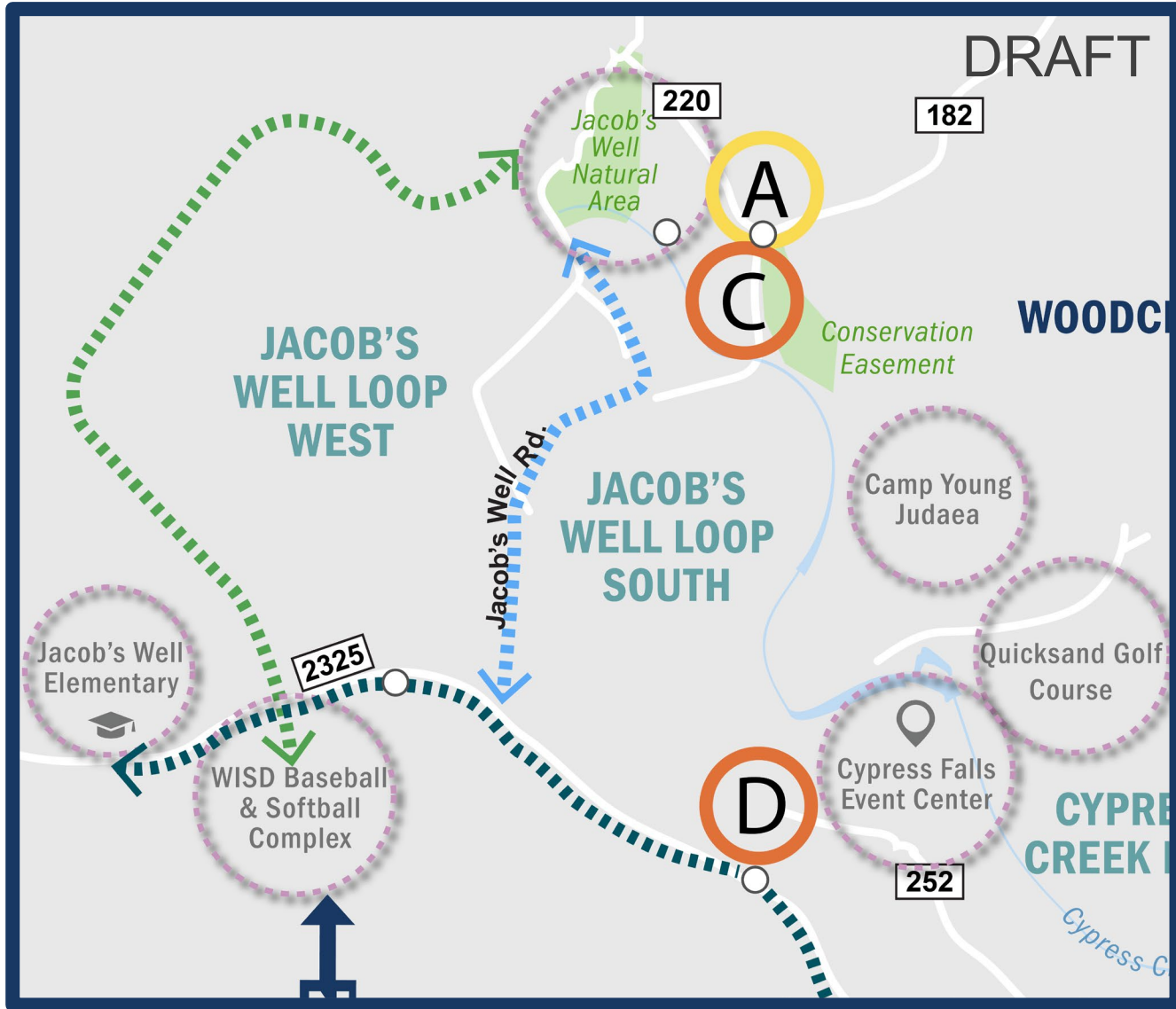
- Multiple connections, Woodcreek City Hall, Golf Course, Camp Young Judea, Cypress Falls Event Center, and Jacob's Well.
- Possible easements through golf course.
- Possible on-street trail
- This is a key connection for the trail system.





# Jacob's Well and West End Connections

- Links Jacobs Well and Highway 2325
- Use existing open space along the edges of the closed golf course.
- Existing cart paths could be widened to provide a width and surface to accommodate walking, running, and biking.
- Connection with the adjacent residential areas for children to walk or bike to Blue Hole Primary school

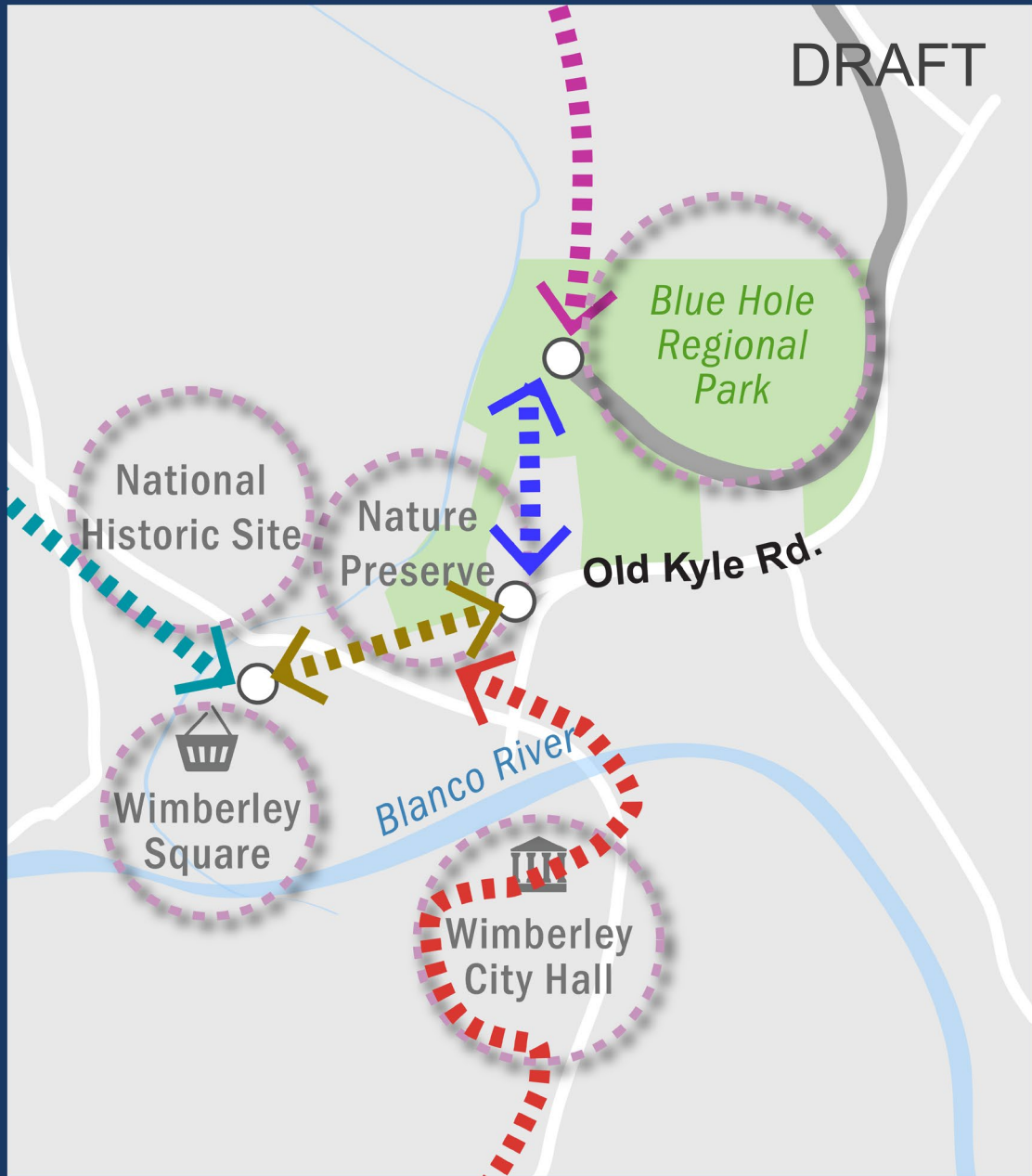


## Wimberley High School to Jacobs Well Elementary

- Would use existing Highway 2325 ROW and provide connections with the Cypress Creek Option Trail, Jacobs Well to 2325 Trail, Jacobs Well to 2325 Trail West Route, and the IDS Baseball / Softball Complex and Jacobs Well Elementary School.
- Prime connector that allows the interconnecting trail system to function and have a width and surface to accommodate walking, running, and biking.
- Due the speed of traffic and the potential heavy use of this trail, safe pedestrian crossings will be considered. There may also be a need for signalized pedestrian crossings where this trail connects to other trail routes.



DRAFT



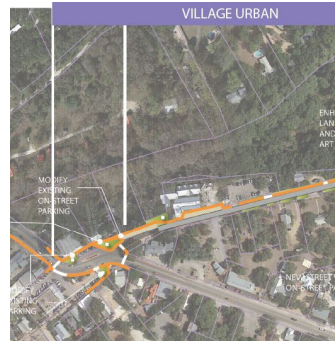
# Ranch Road 2325 Old Kyle Road Connector

Pursuing **Safe Routes to School** funding to improve walking safety and access between schools, major roads, and destinations.

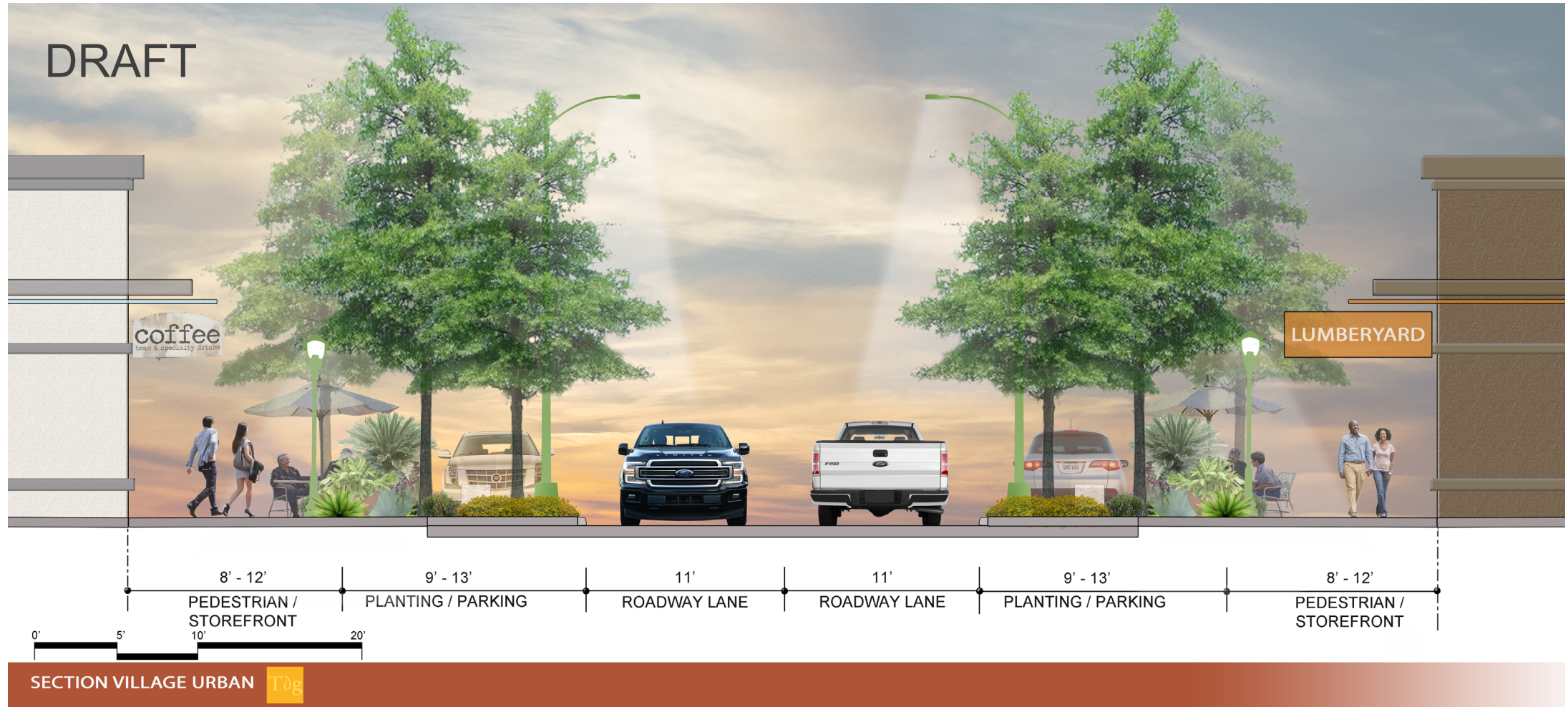


# Old Kyle Road Concept





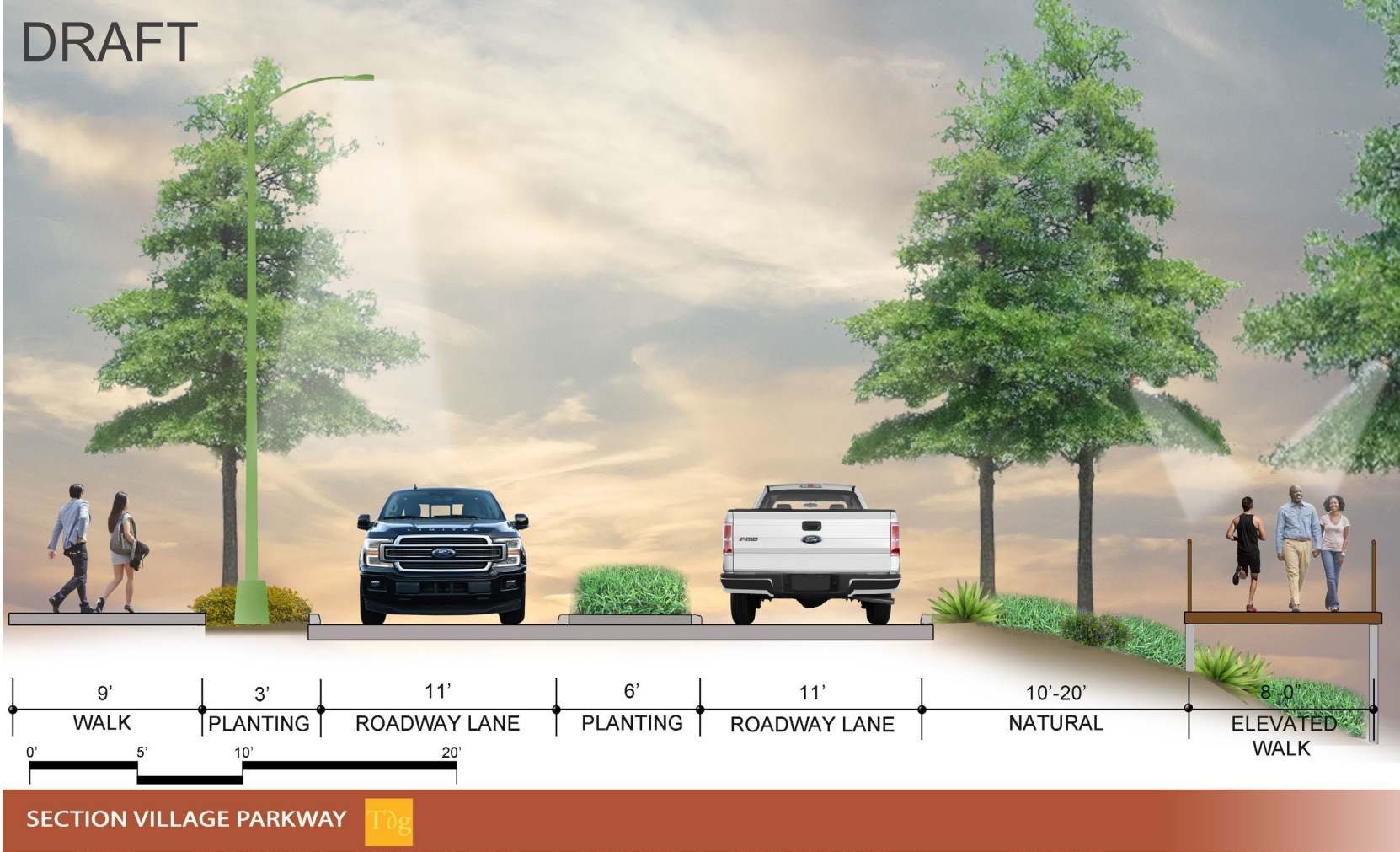
# Old Kyle Road Concept Village Urban



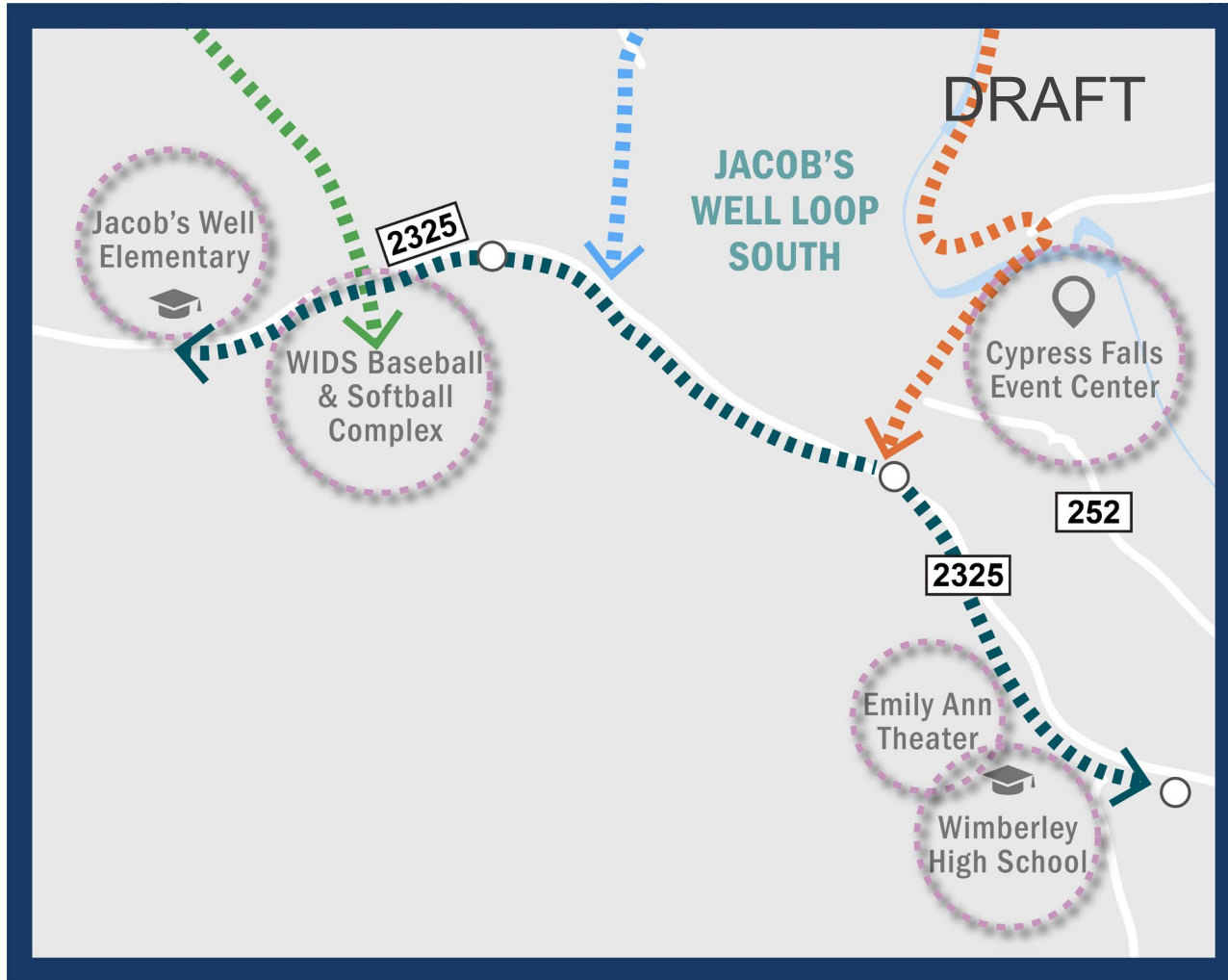




# Old Kyle Road Concept Village Parkway







## Jacob's Well to Ranch Road 2325

Connect Cypress Creek Option Trail, Jacobs Well to 2325 Trail, and the baseball/softball complex with Jacob's Well Elementary.

Routes typically show use of right of way along streets and highways, since much of the creek and river floodways are privately owned.

Pursuing **Transportation alternatives** funding to improve walking safety and access between schools, major roads, and destinations.

# Upcoming activities:

## Virtual Public Meeting

Feb. 25<sup>th</sup>, 2021 5:30 - 6:30 p.m.

### Join on Zoom

Meeting ID  
992 7400 0177

### Join by Phone

(346) 248-7799



Scan with your  
phone camera to  
join the Virtual  
Public Meeting

If you are unable to attend, please visit [WimberleyValleyTrails.com](https://WimberleyValleyTrails.com) to learn more and take a survey. The survey is available from **Feb. 25 - March 22, 2021.**

*Please take the survey and help us spread the word!*

