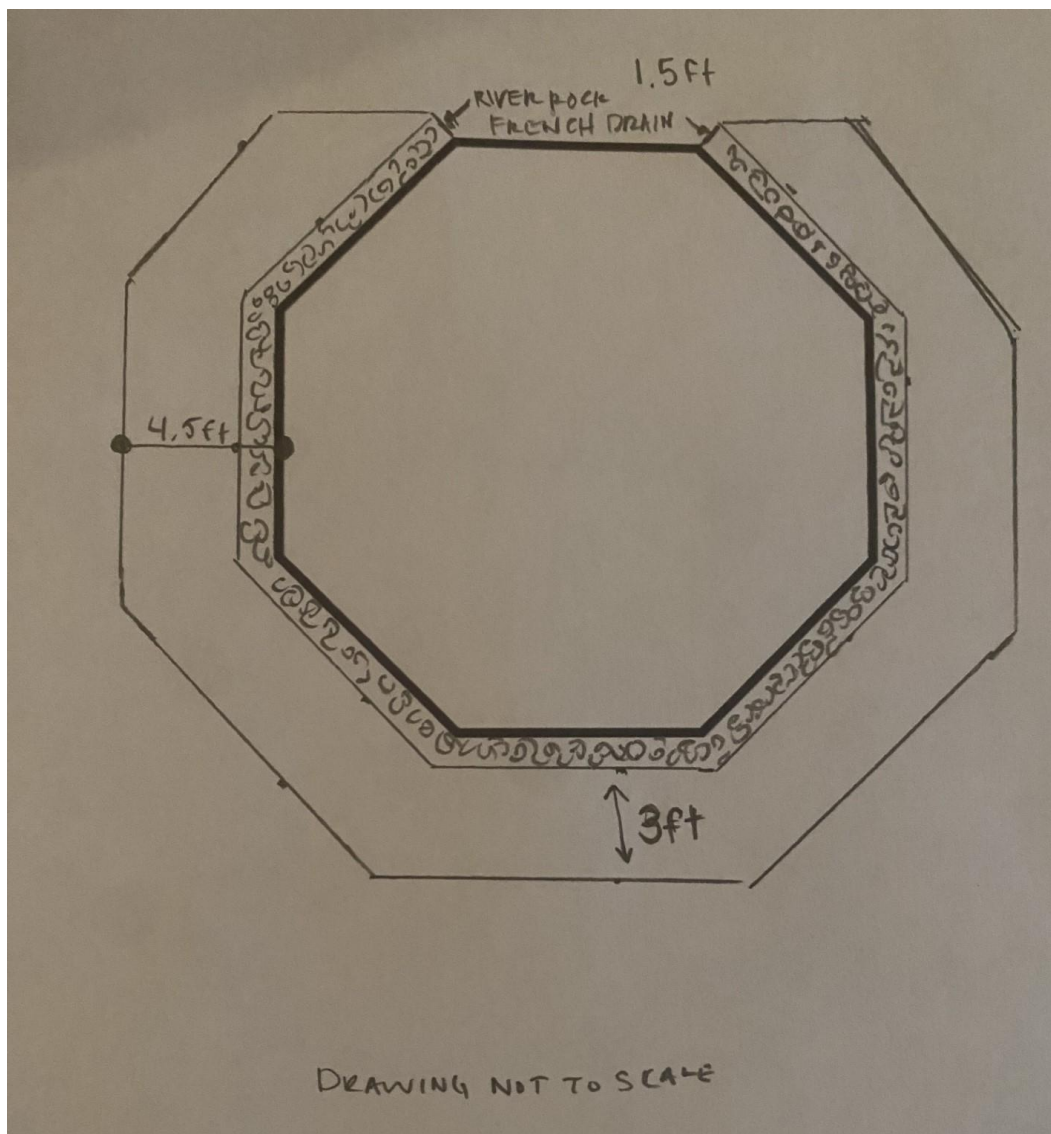


The Triangle Beautification Project

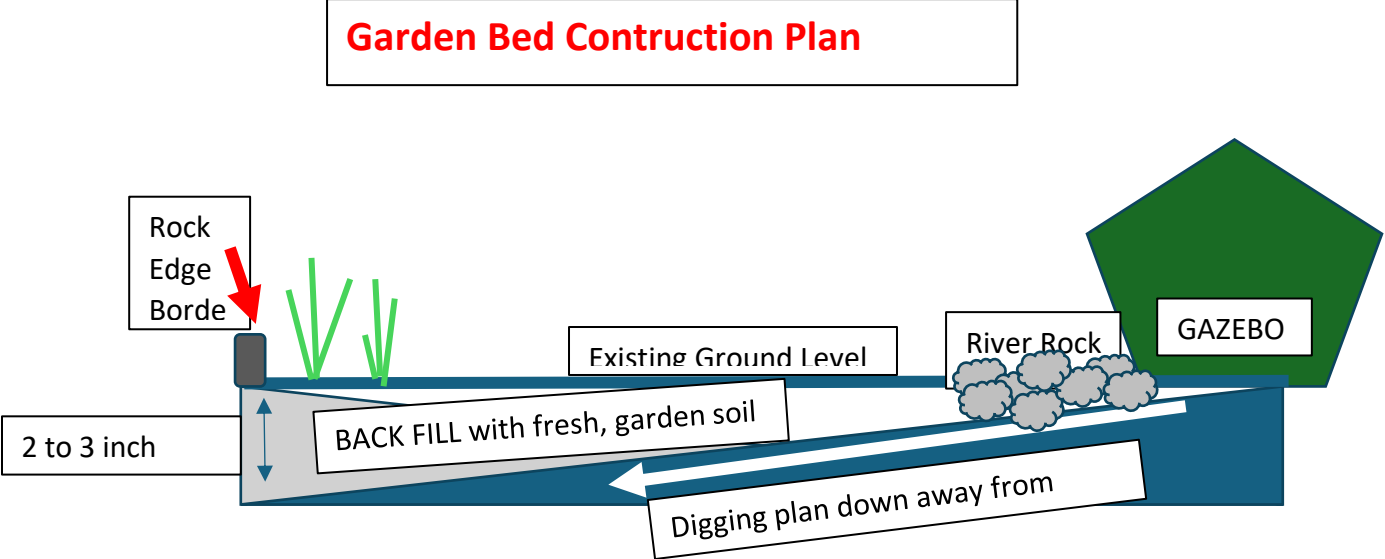
Final Proposal

The original proposal was to dedicate \$2000 to this project. The Council approved this project and initial design with the understanding that a final proposal would be submitted for review and input prior to starting work.

Here is the basic design:



The final concept plan will involve an organic edged, natural rock border that roughly follows the pattern of the Gazebo. The plan includes a touch of site work to grade down away from the gazebo foundation for drainage with a small "French drain" style border around the base of the foundation. Plants would go in the outer bed rim in the fall (rainwater collection installation dependent) or in the spring of 2025.



A Desert Willow has been planted and will be incorporated into the bed.

Mulch can be acquired for free, there will be an estimated cost for a pallet of garden dirt and river rocks. A pallet of dirt is roughly \$800 and the river rocks would be around \$700.

Dirt removed will be utilized to create a sub-base for the ADA compliant entrance ramp.

MSI
Multi-Colored 0.5 cu. ft. per Bag (1 in. to 2.5 in.) Bagged
Landscape Pebbles (1 Bag/0.5 cu. ft.)

★★★★★ (222) Questions & Answers (47)



Ship to Store

Jul 1 - Jul 5
7,814 available
FREE

Delivery

Tuesday, Jul 2
7,814 available
FREE

How much will you need?

Please note: calculations are estimates only

Calculate by:

- Width x Length x Depth
- Square Footage x Depth

Space 1

Width: ft. Length: ft. Depth: in.
3 in. recommended

+ Add Space

Calculate

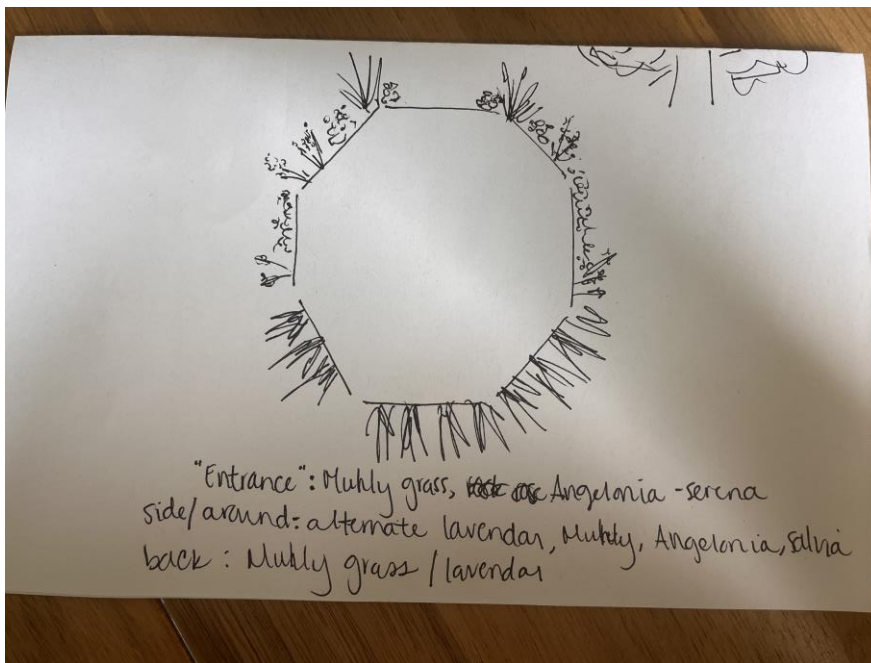
33 bags

will cover 16.50 cu. ft.

\$692.01

Est. Total

Plant recommendations by local Master Gardeners, estimated cost \$400.

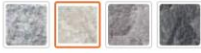


There will be a rainwater collection system proposed separately later.

Estimated rock cost and possible styles:

35

Top Rated



\$799⁰⁰ /pallet

★★★★★ (142)

Model# 21005

36

Nantucket Pavers

Cobblestone 10 in. x 7 in. x 4 in. Buff
Granite Edging (50-Pieces/41 Linear
ft./Pallet)

26



\$799⁰⁰ /pallet

★★★★★ (55)

Model# 20906

Nantucket Pavers

Cobblestone 9 in. x 5 in. x 5 in. Rose
Granite Edging (75-Pieces/56 Linear
ft./Pallet)



Li

★★★

Model#

Nantu

Cobb

Grani

ft./Pal

TOTAL EXPECTED COST CLOSER TO \$3000, but we are seeking donations.