

**OPINION OF PROBABLE CONSTRUCTION COSTS  
KIMLEY-HORN AND ASSOCIATES**

<i>PROJECT NAME:</i>	The Oaks		
<i>CITY:</i>	WOODCREEK, TEXAS		
<i>JOB NUMBER:</i>	069291100		
<i>CREATED:</i>	10/5/2022		
<i>PRINTED:</i>			
<i>CREATED BY:</i>	JML		
<i>CHECKED BY:</i>	BMW		

**A. STREETS/EARTHWORK**

<i>DESCRIPTION</i>	<i>UNIT</i>	<i>QUANTITIES</i>	<i>UNIT PRICE</i>	<i>SCHEDULED VALUE</i>
CLEARING	AC	1.05	\$ 2,450.00	\$ 2,572.50
EXCAVATION (CUT)	CY	1604	\$ 11.00	\$ 17,638.50
EMBANKMENT (FILL)	CY	6073	\$ 6.00	\$ 36,439.20
SUBGRADE PREP (SITE)	SY	2400	\$ 2.50	\$ 6,000.00
8" LIME (SITE)	SY	2400	\$ 8.50	\$ 20,400.00
13" FLEXIBLE BASE (SITE)	SY	2400	\$ 15.00	\$ 36,000.00
1 1/2" HMAC TYPE D (SITE)	SY	2400	\$ 35.00	\$ 84,000.00
SIGNAGE AND STRIPING (SITE)	LS	1	\$ 9,100.00	\$ 9,100.00
CURB AND GUTTER (SITE)	LF	1846	\$ 21.00	\$ 38,766.00
6" SIDEWALK	LF	899	\$ 38.00	\$ 34,166.56
TRAFFIC CONTROLS	LS	1	\$ 18,000.00	\$ 18,000.00
<b>SUBTOTAL STREETS/EARTHWORK</b>				<b>\$ 303,082.76</b>

**B. DRAINAGE**

<i>DESCRIPTION</i>	<i>UNIT</i>	<i>QUANTITIES</i>	<i>UNIT PRICE</i>	<i>SCHEDULED VALUE</i>
18" RCP	LF	399	\$ 140.00	\$ 55,923.00
24" RCP	LF	800	\$ 120.00	\$ 95,956.80
36" RCP	LF	370	\$ 220.00	\$ 81,325.20
2' X 2' SURFACE GRATE INLETS	EA	1	\$ 6,000.00	\$ 6,000.00
2.5' X 2.5' SURFACE GRATE INLETS	EA	1	\$ 6,250.00	\$ 6,250.00
3' X 3' SURFACE GRATE INLETS	EA	2	\$ 6,500.00	\$ 13,000.00
4' X 4' SURFACE GRATE INLETS	EA	2	\$ 6,800.00	\$ 13,600.00
4' MANHOLE	EA	1	\$ 5,500.00	\$ 5,500.00
5' MANHOLE	EA	2	\$ 7,500.00	\$ 15,000.00
10' CURB INLETS	EA	5	\$ 9,400.00	\$ 47,000.00
DETENTION POND	EA	1	\$ 80,000.00	\$ 80,000.00
CONTECH JELLYFISH WQ STRUCTURE	EA	1	\$ 92,000.00	\$ 92,000.00
<b>SUBTOTAL DRAINAGE</b>				<b>\$ 339,555.00</b>

**OPINION OF PROBABLE CONSTRUCTION COSTS  
KIMLEY-HORN AND ASSOCIATES**

PROJECT NAME:	The Oaks		
CITY:	WOODCREEK, TEXAS		
JOB NUMBER:	069291100		
CREATED:	10/5/2022		

**C. WATER**

DESCRIPTION	UNIT	QUANTITIES	UNIT PRICE	SCHEDULED VALUE
6" PVC	LF	799	\$ 85.00	\$ 67,908.20
6" GATE VALVES	EA	4	\$ 4,700.00	\$ 18,800.00
BLOW OFF VALVE	EA	1	\$ 7,300.00	\$ 7,300.00
FIRE HYDRANT ASSEMBLIES	EA	3	\$ 9,000.00	\$ 27,000.00
SINGLE SERVICE CONNECTION	EA	5	\$ 2,300.00	\$ 11,500.00
DOUBLE SERVICE CONNECTION	EA	6	\$ 2,500.00	\$ 15,000.00
6" CONNECTION TO MAIN	EA	1	\$ 6,600.00	\$ 6,600.00
<b>SUBTOTAL WATER</b>				<b>\$ 154,108.20</b>

**D. WASTEWATER**

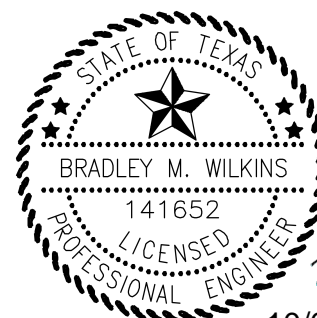
DESCRIPTION	UNIT	QUANTITIES	UNIT PRICE	SCHEDULED VALUE
3" HDPE	LF	1013	\$ 35.00	\$ 35,449.75
EONE GH30X60 SIMPLEX GRINDER STATION	EA	1	\$ 96,000.00	\$ 96,000.00
CONNECT TO EXISTING MANHOLE	EA	1	\$ 7,100.00	\$ 7,100.00
<b>SUBTOTAL WASTEWATER</b>				<b>\$ 138,549.75</b>

**E. EROSION CONTROLS**

DESCRIPTION	UNIT	QUANTITIES	UNIT PRICE	SCHEDULED VALUE
SILT FENCE	LF	3952	\$ 5.00	\$ 19,760.95
STABILIZED CONSTRUCTION ENTRANCE	EA	1	\$ 300.00	\$ 300.00
CURB INLET PROTECTION	EA	5	\$ 150.00	\$ 750.00
AREA INLET PROTECTION	EA	6	\$ 150.00	\$ 900.00
ROCK BERM	LF	21	\$ 50.00	\$ 1,064.50
CONCRETE WASHOUT	EA	1	\$ 1,000.00	\$ 1,000.00
TREE PROTECTION	LF	3009	\$ 5.00	\$ 15,047.05
<b>SUBTOTAL EROSION CONTROL</b>				<b>\$ 38,822.50</b>

DESCRIPTION	SCHEDULED
SUBTOTAL STREETS/EARTHWORK	\$303,082.76
SUBTOTAL DRAINAGE	\$339,555.00
SUBTOTAL WATER	\$154,108.20
SUBTOTAL WASTEWATER	\$138,549.75
SUBTOTAL EROSION CONTROL	\$38,822.50
<b>SUBTOTAL</b>	<b>\$974,118.21</b>
<b>ENGINEER'S CONTINGENCY (20%)</b>	<b>\$194,823.64</b>
<b>TOTAL</b>	<b>\$1,168,941.85</b>

1. Kimley-Horn and Associates, Inc. has no control over the cost of labor, materials, equipment, or services furnished by others, or over methods of determining price, or over competitive bidding, or market conditions. Any and all professional opinions as to costs reflected herein, including but not limited to professional opinions as to the costs of construction materials, are made on the basis of professional experience and available data. Kimley-Horn and Associates, Inc. cannot and does not guarantee or warrant that proposals, bids, or actual costs will not vary from the professional opinions of costs shown herein.



*Bradley Wilkins*

10/07/2022