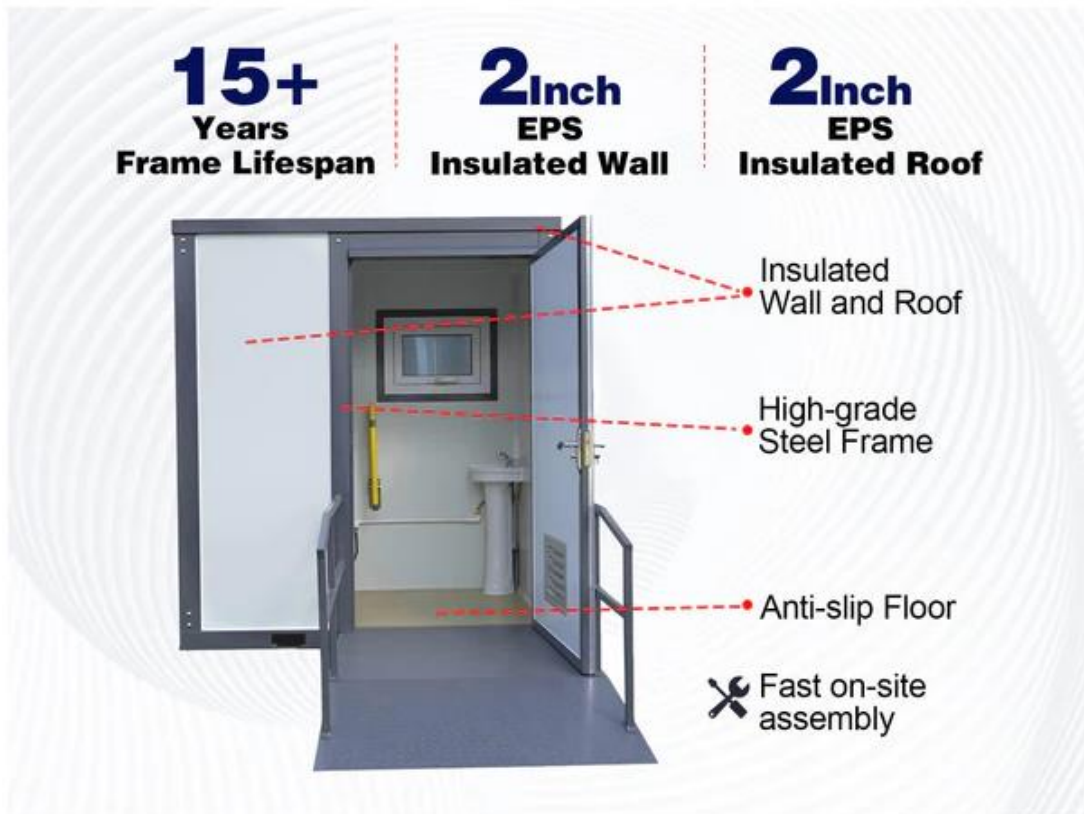


Description

We proudly provide Bastone Handicap-Accessible Portable Restroom for business owners and individuals who need it. We have tool-free removable arms beside the toilet to improve flexibility for users. This unit has a wider space to accommodate a full-size adult wheelchair and movement within the stall.



Specification

Description	Specifications
Model	Handicap-Accessible Portable Restroom
Dimension (LxWxH)	81"x50.4"x90"
Interior Dimension (LxWxH)	75.6"x44.6"x84.6"
Door Size	W 39.4" x H 77"
Net Area	23.4 ft ²
Frame	Steel
Surface Coating	High-Temperature Resistant Paint
Roof Material	2-inch EPS fire-resistant & insulated roof panels
Wall Material	2-inch EPS fire-resistant & insulated wall panels
Floor Material	Anti-skid and wear-resistant floor leather+Hard PVC board
R-value	0.2~0.5(m ² ·K/W)
Doors	<ul style="list-style-type: none"> • EPS Composite Panel • Outward Opening Door
Circuit Breaker Spec	13~16 Amps
Power Supply	110V~220V
Wire info	3 core 2.5 sqmm
Wiring Instructions	White Wire: Live Wire Black Wire: Neutral Wire
Flush volume	1.6 gpf

Inlet Pipe Inner diameter	4/5 inch
Outlet Pipe Material	PVC Pipe
Outlet Pipe Inner diameter	<ul style="list-style-type: none"> • Gray Water Pipe: 1 1/2 inch • Black Water Pipe: 3 inch
Lowest Pipe Working Temperature	14°F (if iced, please use 122°F water to melt)
Fire-proof Level	B2
Wind Load	56 MPH
Snow Load	125 lb/sqft
Forklift Pockets	<p>Dimension: W7"x H3"</p> <p>Distance between forklift pocket: 28"</p>
Footing options	<ul style="list-style-type: none"> • Concrete slab or pads • Compacted ground • Concrete or Steel stumps • Note: The finished height of the surface must be level. Consulting a qualified person is recommended.
Lifespan	15+ Years
Warranty	1 Year
Note	<ul style="list-style-type: none"> • The customer must arrange for a licensed Electrician to supply & Install all wiring. • All pipe connection needs thread seal tape, instead of glue, to seal.

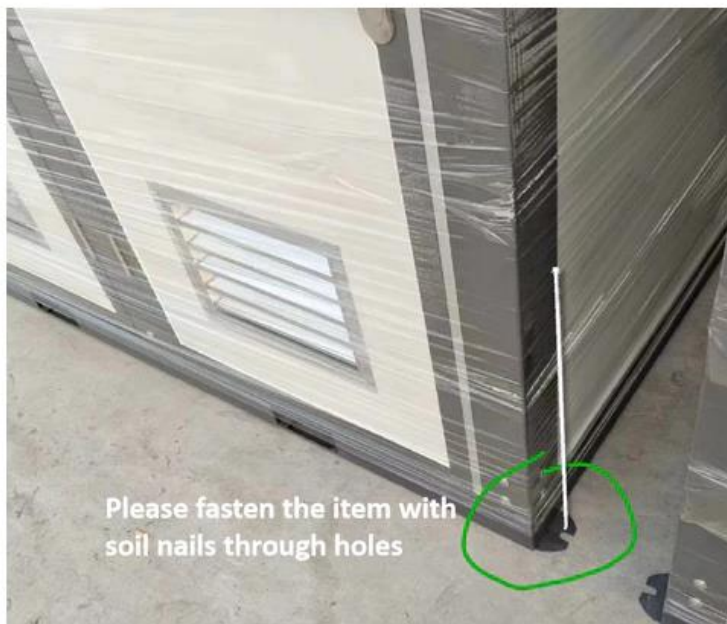
Set up

There are 4 lifting lugs for transportation on the top and a forklift slot on the bottom. The equipment needs to be unloaded using a crane or forklift.

Note: Our Portable Restrooms need to be supplied with city water or well pump water, and all portable toilet "sewage" needs to be connected to the city sewer system or a simple septic system.

If this Bastone Handicap-Accessible Portable Restroom for the Disabled is used on a construction site, we recommend you connect toilets to the sanitary sewer system and connect water to the pipe system. If not, you may need tanks outside the structure for waste.

- If it's a concrete floor, please use twist-n-lock anchors on 4 corners of the portable restroom, and use wire rope to connect the anchor and the top corner of the portable restroom.
- If it's a soil floor, please use 20 inches - 28 inches ground nails on 4 corners and use wire rope to connect the anchor and top corner of the portable restroom.



Feature

- tool-free removable arms, wheelchair accessible
- The ramp comes inside the unit.
- Toilet w/Ceramic Bowl & Tank, Ceramic Vanity Sink w/Faucet
- 1/2" female inlet ports for cold water
- 3" black water/waste exhaust flexible hose (easily slide your 3" PVC pipe onto flex fitting for waste)
- 1" PVC water outlet exhaust port
- Locking Door w/ set of keys, Hinged Window
- Lifting Eyes, Forklift Pockets

Package Size

- L*W*H (inch): 85*53*95
- Weight (lb): 1800
- Forklift or equivalent is required for unloading

Parts Service

- [Lock](#)
- [Faucet](#)
- [Grey Water Outlet](#)
- [Toilet Seal](#)
- [Fan](#)
- [Light Switch](#)
- [Door Vent](#)







Handicap-Accessible Portable Restroom

- ✓ Fireproof insulated walls and roofs
- ✓ Insulated door with lock
- ✓ Complete internal facilities
- ✓ Fast on-site assembly
- ✓ Handicap-Accessible Compliance



Ceramic Sink



Ceramic Toilet



Convenient Ramp



Insulated Window



Extractor Shutter Fan



Security Door Lock

Portable & Convenient



Lifting Lugs

Used for site location.
One for each of the four corners.

Forklift Pockets

Used for transport.
Dimension: W7"xH3"
Distance: 28"

How to connect the pipe?



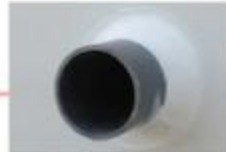
Inlet Pipe

Connect to a clean water supply



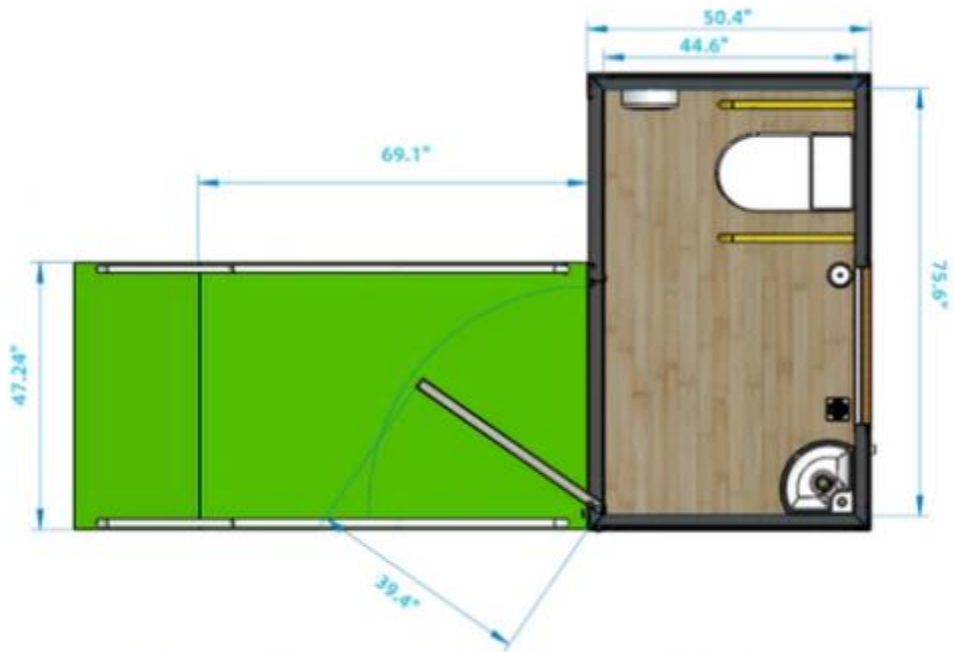
Black Water Pipe

Connect to sewage or septic tank.



Gray Water Pipe

Connect to sewage or septic tank.



Handicap-Accessible Portable Restroom