



Home

Welcome to the NEW Hays Trinity Groundwater Conservation District (HTGCD) website. We are in the process of editing out bugs.

Our mission is to conserve, preserve, recharge and prevent waste of groundwater within western Hays County. In support of the District's mission, we provide educational materials and information about our water resources.

Click on the menu above for information on the major water resource topics such as [Conservation](#) and [Drought Management](#).

If you are planning to drill a well on a property within the District ([Click for map](#)), please go to the [Forms](#) page for the necessary forms that need to be completed prior to drilling.

Please read our June [Aquifer Health Assessment](#). The monthly assessment utilizes the District's monitoring network to present current water level conditions in the Trinity Aquifer. Also included is a timestep of aquifer conditions from the past year.



Aquifer and Surface Water Conditions Hays Trinity Groundwater Conservation District

July 2022

Current Drought Stages: District-Wide: 40 percent curtailment
Jacob's Well GMZ: 30 percent curtailment

Aquifer Conditions

Aquifer health is assessed by comparing a well's current water level to its range of water levels between 2008 and 2019.

Wells in the north-central area of the District have recorded major water level declines, and are trending towards historical lows.

The western and south-central regions show Middle Trinity water levels trending down towards unprecedented lows.

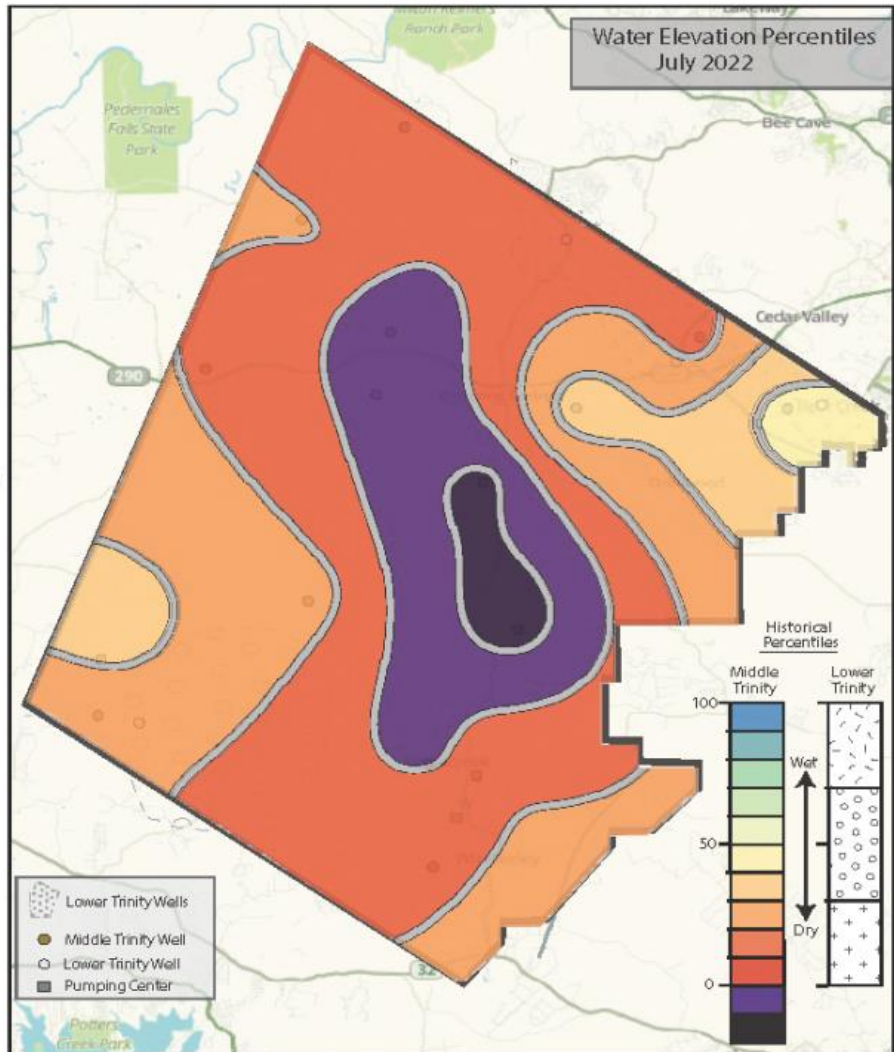
Water levels in Bear Creek area wells have declined towards their 30th percentile.

July water levels have declined by about 6 feet in Lower Trinity Aquifer wells north of Dripping Springs, likely due to increased pumping prompted by the ongoing drought. Lower Trinity Aquifer levels in this region are down more than 20 feet year-on-year.

This section of the Lower Trinity Aquifer is not being replenished by precipitation recharge.

Monthly Stat

100-percent of the District is below the 50th percentile.



Data from July 14-16 2022. Historical percentiles represent the percent of the maximum historical value for that well. Historical values are from 2008 - 2019. A percent of zero would represent the lowest historical water level, while 100-percent represents the highest historical water level. Shades of purple represent negative values, signifying water levels below the 2008-2019 minimum.

Population served by Hays Trinity GCD

2001: 24,187; 2010: 36,519; 2020: 53,121