

**CREEKSIDE
PROPERTY
EQUIPMENT
PROPOSAL 1
6/14/2021**

CREEKSIDE PROPERTY FAQs

- **Why is the equipment so expensive?**

Nice things have a proportional price tag. We have approached this selection with a minimum quality standard that we feel is consonant with the overall aesthetic of our City, long-term durability, low maintenance cost over the lifespan of the equipment, and the safety of our children. There are multiple equipment options that will fit on this property that cost four and five times this proposed amount.

- **Why is the installation cost so high?**

It is very reasonable, actually, at essentially one third of the material cost for the equipment. Typical commercial construction costs are often close to a 1 to 1 ratio between labor and materials. Installation cost does not appear to be a substantial profit center in this proposal.

- **Do we have to choose this playground equipment?**

Absolutely not. This design proposal is exactly that: just a proposal. It is a design concept to start the conversation and set a rough-order-of-magnitude price tag. A great metaphor is “You can’t steer a parked car”.

- **I don’t like the equipment color scheme. It seems loud, and visually unappealing. Can we change the colors?**

Absolutely. The manufacturer has a full color palette, and any color or combination of colors can be chosen for any component of the system. The system is completely custom built to order.

- **Why are we proposing the use of “mulch” as the safety surface surrounding the equipment?**

This is not mulch. It is engineered wood fiber, or EWF. EWF is a composite material made up of large, medium and fine wood particles designed to be impact-forgiving for safety, cohesive for ease of maintenance, and inexpensive to install and replace. EWF costs around \$4.00 per square foot for initial installation, and about \$1.00 per square foot to repair or renew every other year. By comparison, poured in place rubber safety surface will be about \$85,000 in additional cost. This surface has a high initial installation cost, but the only maintenance required is an epoxy re-coat every 4 years that is very inexpensive. And can essentially be done by anyone with a paint roller.

- **I have heard swings are difficult and expensive to maintain. Do we need swings?**

Yes. Playgrounds have swings, and children expect to see them. They are a key component, and a major attraction. The cost and difficulty issues supposedly associated

with swings disappear if the equipment is selected and installed correctly. This equipment has been selected correctly.

- **There doesn't seem to be enough room for parking spaces.**

Where will everyone park?

This proposal is for a neighborhood "Pocket Park". The entire City of Woodcreek is one square mile, and this park is in the center. Foot and bicycle traffic to the park should be encouraged, while additional vehicle traffic and parking should not. This proposal does not recommend substantial parking area apart from the space for three vehicles apparently available. One might propose a single parking space, with a handicapped van-accessible space next to it. Bike racks will be included.

- **Will there be a water fountain available?**

AquaTexas has stated their willingness to furnish the City with a fountain. This would be a good place for it. There are utilities immediately adjacent that could be tapped. A line tap, a ¾" water supply line and a backflow preventer in a valve box would be not an appreciable expense. We can buy local for this service.

- **Will we have to cut down trees to do this?**

Yes, but not to any great extent. The old broken oak in the center of the property is no longer structurally sound and has been examined by a Certified Arborist. It is nice to look at, but it is ready to fall over in the next storm. There are also a pair of stunted cedars that need to be removed. All other trees should be pruned up by an arborist and left in place.

- **What will the neighbors think?**

There has never been a civic project of any kind without opposition. When the aqueducts were built in Rome, there was most likely a series of petitions circulated against it. Park hours should be daylight hours only, with no facility lighting. No Parking signs in the area should be a component of the project. Parking should be extremely limited, if not non-existent. The demand for a playground facility has been illustrated previously through surveys and an informal census.

- **What is the timeline for construction of this playground?**

Upon payment, the manufacturer needs eight weeks to build it at the factory. One week for shipping it to the site, and then one week to install it all, barring weather delays.

- **Are there any additional costs?**

Yes. We will want to look into fences, sidewalks, parking spaces, signs, and landscaping. A value should be assigned to this work, and further design work should be done to incorporate these elements. We will also need to furnish an 8' tall chain-link rental fence to surround the construction site from start to finish. The cost for this is not exorbitant. Funding should be sought based on a ROM number for all of these items.

- **How will we pay for this?**

75% of this cost should be paid for with Hays County funds. The remaining 25% in matching funds should be covered by additional grants, private donations, fundraisers, City funds, and other means. Ideally, the City would pay little or nothing, and we can support local businesses in the buy-out effort. The required yearly maintenance costs can be calculated simply and become a recurring budget allotment by Ordinance for Council to approve.



Intellectual property of GameTime, a PlayCore Company. The site shown in rendering is an interpretation and may not reflect exact site conditions.

City of Woodcreek

PS20006 Nature Walk
View 2



A PLAYCORE Company

www.gametime.com



www.totalrecreation.net



Intellectual property of GameTime, a PlayCore Company. The site shown in rendering is an interpretation and may not reflect exact site conditions.

City of Woodcreek

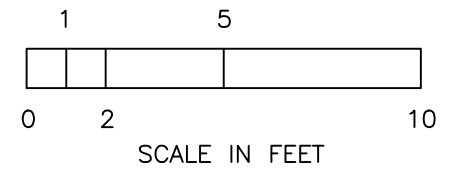
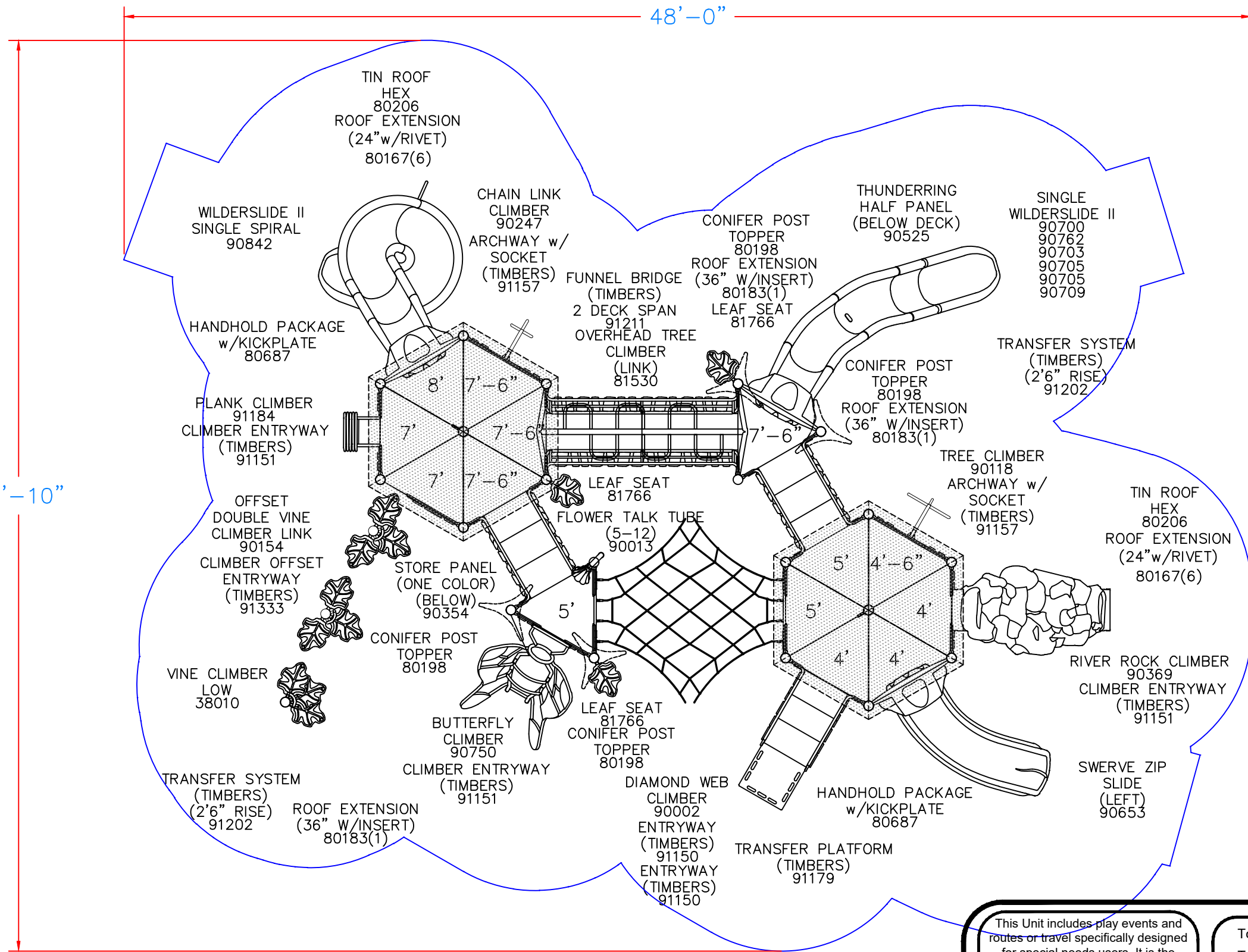
PS20006 Nature Walk
View 1



www.gametime.com

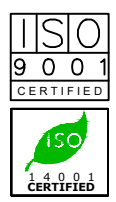


www.totalrecreation.net



This Unit includes play events and routes or travel specifically designed for special needs users. It is the opinion of the manufacturer that these play events and routes of travel conform to the accessibility requirements of the ADA (Americans with Disabilities Act)

Total Elevated Play Components	12		
Total Elevated Play Components Accessible By Ramp	-	Required	-
Total Elevated Components Accessible By Transfer	12	Required	6
Total Accessible Ground Level Components Shown	7	Required	4
Total Different Types Of Ground Level Components	5	Required	3



City of Woodcreek
PS20006 Nature Walk

Representative
Total Recreation Products, Inc.

This play equipment is recommended for children ages
5-12

Minimum Area Required:
48'-0" x 38'-10"

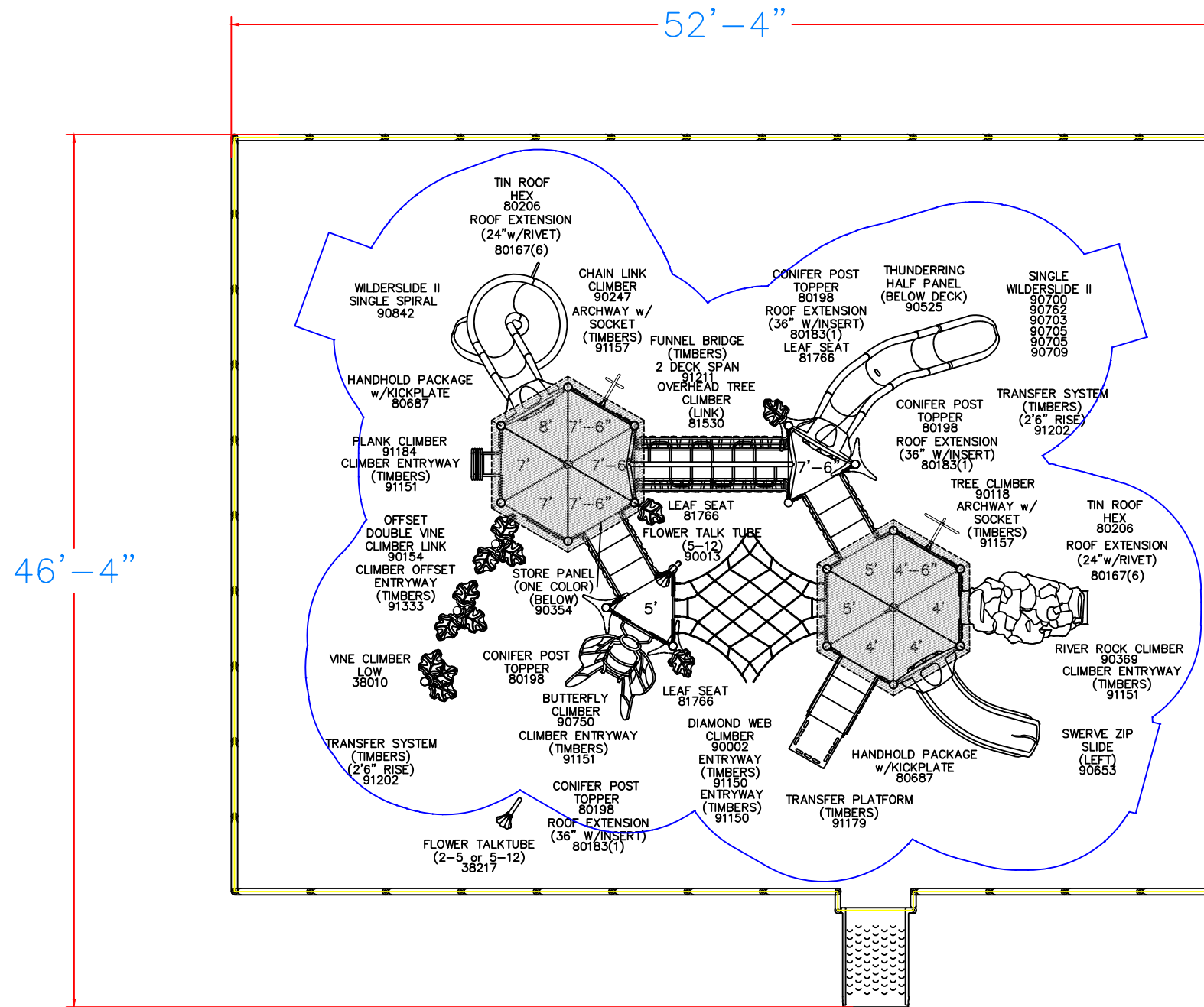
Scale:
This drawing can be scaled only when in an 11" x 17" format

IMPORTANT: Soft resilient surfacing should be placed in the use zones of all equipment, as specified for each type of equipment, and at depths to meet the critical fall heights as specified by the U.S. consumer Product Safety Commission, ASTM standard F 1487 and Canadian Standard CAN/CSA-Z-614

Drawn By:
MW

Date:
06/08/2021

Drawing Name:
TM-06021-21-2A1





Intellectual property of GameTime, a PlayCore Company. The site shown in rendering is an interpretation and may not reflect exact site conditions.

City of Woodcreek

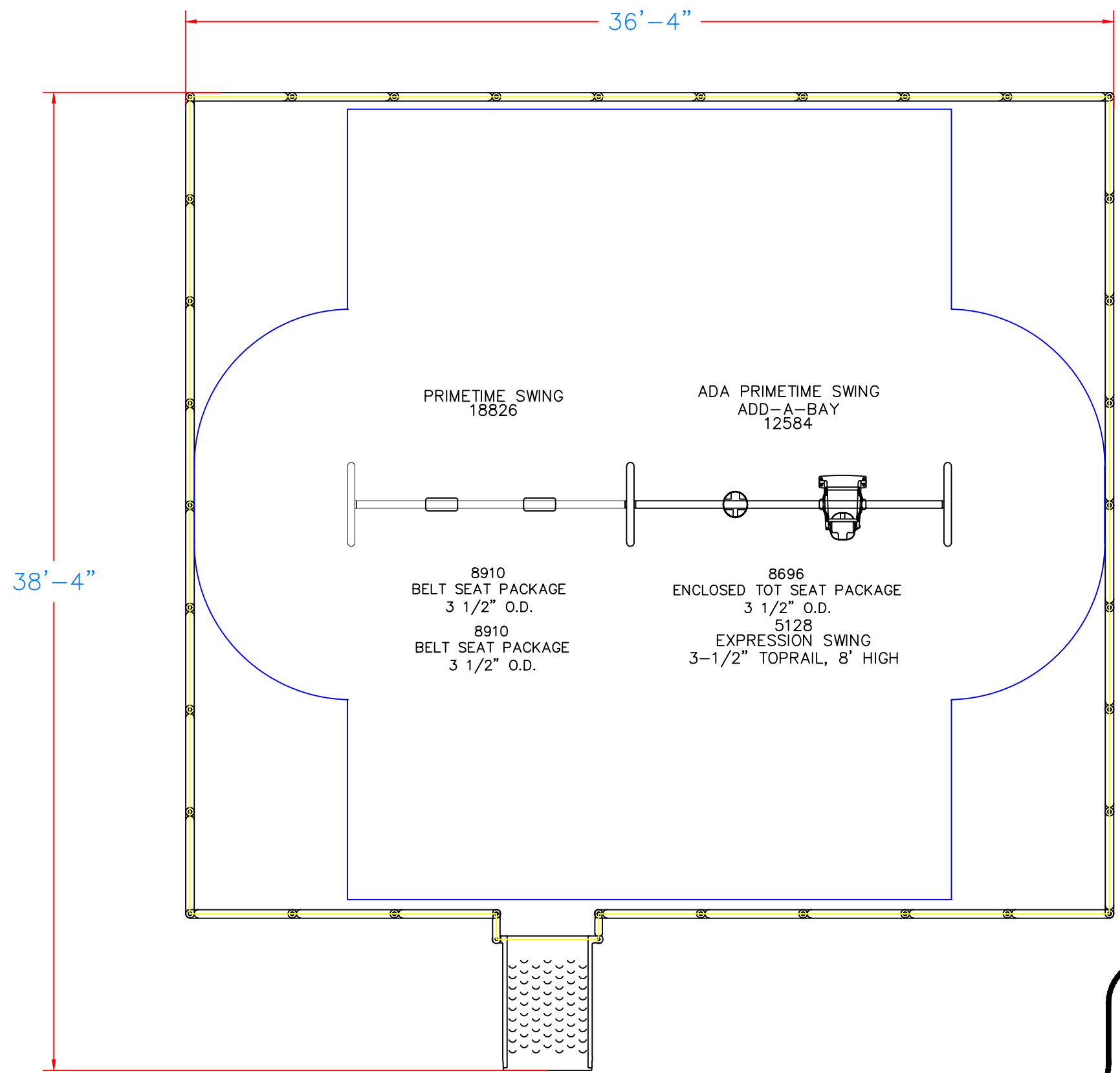
2 Bay Primetime Swings



www.gametime.com

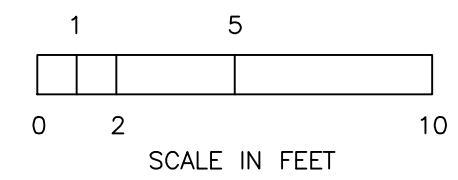


www.totalrecreation.net



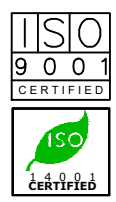
CURBING	
TYPE	PLSTC
LN FT	136
HT	12"

SURFACING	
TYPE	EWF
SQ FT	1157
DEPTH	12"



This Unit includes play events and routes or travel specifically designed for special needs users. It is the opinion of the manufacturer that these play events and routes of travel conform to the accessibility requirements of the ADA (Americans with Disabilities Act)

Total Elevated Play Components	0	Required	0
Total Elevated Play Components Accessible By Ramp	0	Required	0
Total Elevated Components Accessible By Transfer	0	Required	0
Total Accessible Ground Level Components Shown	0	Required	0
Total Different Types Of Ground Level Components	0	Required	0



City of Woodcreek

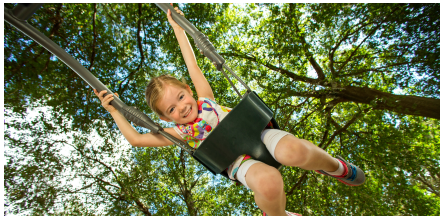
Representative
Total Recreation Products, Inc.

This play equipment is recommended for children ages
2-5, 5-12

Minimum Area Required:
36'-4" x 38'-4"
Scale:
This drawing can be scaled only when in an 11" x 17" format

IMPORTANT: Soft resilient surfacing should be placed in the use zones of all equipment, as specified for each type of equipment, and at depths to meet the critical fall heights as specified by the U.S. consumer Product Safety Commission, ASTM standard F 1487 and Canadian Standard CAN/CSA-Z-614

Drawn By:
MW
Date:
06/08/2021
Drawing Name:
TM-06021-21-1A2



Expression Swing is a GameTime exclusive and the industry's first playground swing that promotes intergenerational play as adults and children swing together. The patented face-to-face design features a bucket seat for children under five and a comfortable adult swing seat that allows a parent and child (or grandparent and grandchild) to interact with each other and experience...

Features and Benefits:

- See Eye to Eye - Patent-pending face-to-face design positions adult and child at eye level with one another so they can interact
- Swing in Comfort - Exclusive platform swing seat is ergonomically designed for adults and compliant with current swing safety standards

Model: 5128

Limited Lifetime Warranty on uprights, hardware and connections. Visit [gametime.com/warranty](https://www.gametime.com/warranty) for full warranty information





Our park accessories and amenities are constructed of the same durable materials as our playground equipment and are supported by a worldwide network of qualified recreation consultants. Together we can make your park a welcome oasis for your community.

Features and Benefits:

Includes in-ground amenities:

- 6' Tuffclad Bench (x2)
- 32 Gallon Tuffclad Receptacle

Model: FS21008

Limited Lifetime Warranty on uprights, hardware and connections. Visit [gametime.com/warranty](https://www.gametime.com/warranty) for full warranty information



Designing award-winning playgrounds since 1929.



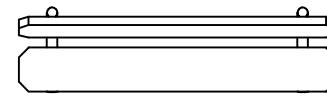
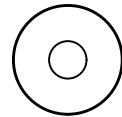
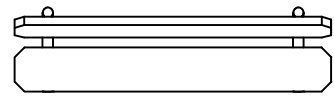
Certified Installer Network - GameTime trained for GameTime playgrounds.



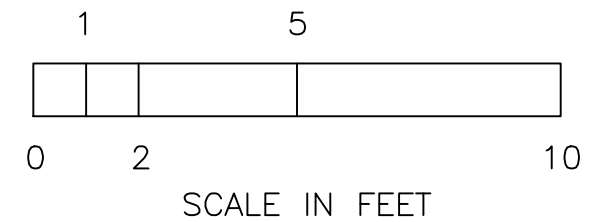
Complies with ASTM standards before it leaves the factory.

TUFFCLAD
6' BENCH w/BACK
IN-GROUND (PS)
28009

TUFFCLAD
6' BENCH w/BACK
IN-GROUND (PS)
28009



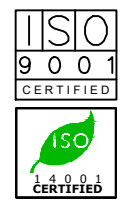
TUFFCLAD RECEPTACLE
FLAT LID, IN-GROUND (PS)
28026



This Unit includes play events and routes or travel specifically designed for special needs users. It is the opinion of the manufacturer that these play events and routes of travel conform to the accessibility requirements of the ADA (Americans with Disabilities Act)

Total Elevated Play Components	-	Required	-
Total Elevated Play Components Accessible By Ramp	-	Required	-
Total Elevated Components Accessible By Transfer	-	Required	-
Total Accessible Ground Level Components Shown	-	Required	-
Total Different Types Of Ground Level Components	-	Required	-

GameTime
A PLAYCORE Company
150 PlayCore Drive SE
Fort Payne, AL 35967
www.gametime.com



City of Woodcreek
FS21008 Comfort Package B
Representative
Total Recreation Products, Inc.

This play equipment is recommended for children ages
-

Minimum Area Required:
-
Scale: -
This drawing can be scaled only when in an 8 1/2" x 11" format

IMPORTANT: Soft resilient surfacing should be placed in the use zones of all equipment, as specified for each type of equipment, and at depths to meet the critical fall heights as specified by the U.S. consumer Product Safety Commission, ASTM standard F 1487 and Canadian Standard CAN/CSA-Z-614

Drawn By:
MW
Date:
06/09/2021
Drawing Name:
TM-06021-21-2A3



c/o Total Recreation Products, Inc.
 17802 Grant Road Cypress, Texas 77429
 Phone: 281-351-2402
 Toll Free: 800-392-9909
 Fax: 281-351-2493

06/09/2021
 Quote #101606-01-01

TM-06021-21 City of Woodcreek

City of Woodcreek
 Attn: Cody Abney
 27 Shade Grove Lane
 Wimberley, TX 78676
 Phone: 512-677-7860
 cody.abney@ryancompanies.com

Ship to Zip 78744

Quantity	Part #	Description	Unit Price	Amount
1	RDU	GameTime - TM-06021-21-2A1 PS20006 Nature Walk 5-12 Unit	\$97,141.00	\$97,141.00
1	38217	GameTime - Flower Talk Tube Ground Level 2-5	\$633.00	\$633.00
1	RDU	GameTime - 2-Bay Primetime Swing with (2) Belt Seats, (1) Enclosed Tot Seat & (1) Expression Swing	\$4,282.00	\$4,282.00
1	RDU	GT-Site - FS21008 Comfort Package B	\$2,220.00	\$2,220.00
1	RDU	GameTime - Surfacing Accessories: (78) Playcurbs, (2) ADA Access Ramps, (2) Rolls of Geo-Textile Fabric & (7) Wear Mats	\$8,603.00	\$8,603.00
1	178749	GameTime - Owner's Kit	\$60.00	\$60.00
1	W86854	GT-Impax - 161 CY (3,242 SF) Engineered Wood Fiber Surfacing, 12" Compacted Depth- <i>Price includes discount of \$607.23 and freight to site</i>	\$5,436.26	\$5,436.26
1	INSTALL	GameTime - Installation- <i>Installation of Above Equipment and Surfacing Only; No other site work, demolition or concrete work included. Acquisition of any and all permits is the sole responsibility of the customer. Standard installation does not include any extra or additional machinery, drillers, etc., for rock excavation. If rock conditions are encountered, additional charges will apply.</i>	\$33,582.90	\$33,582.90
Contract: OMNIA			Sub Total	\$151,958.16
			Discount	(\$25,350.65)
			Material Surcharge	\$8,776.29
			Freight	\$3,250.00
			Total	\$138,633.80

Comments

Freight Calculated to Installer Address

Omnia Partners (Formerly US Communities) #201701134

DUE TO FLUCTUATING FUEL COSTS, FREIGHT SHOWN IS ESTIMATED FREIGHT. ACTUAL FREIGHT WILL BE DETERMINED AT THE TIME OF YOUR ORDER. PLEASE FEEL FREE TO CONTACT US TO VERIFY CURRENT FREIGHT CHARGES PRIOR TO PLACING YOUR ORDER.

Important Terms & Conditions - Please Review

To place an order, you must provide one of the following: a Purchase Order assigned to GameTime; or this Price Quotation, signed by an authorized purchaser, with a check made payable to GameTime. GameTime will also accept payment by Visa, MasterCard, or American Express. A current approved credit application is required for Net 30 terms.



c/o Total Recreation Products, Inc.
17802 Grant Road Cypress, Texas 77429
Phone: 281-351-2402
Toll Free: 800-392-9909
Fax: 281-351-2493

06/09/2021
Quote #101606-01-01

TM-06021-21 City of Woodcreek

This quotation explicitly excludes any and all items not expressly specified or identified above. No other product, equipment, or service is included, regardless of any Contract Document, Contract Section, Plans, Specifications, Drawing, or Addendum. Delivery for most GameTime equipment is approximately 6-8 weeks after all order documents have been received and payment terms have been approved. A current, approved credit application is required for N30 terms. To place an order, you must provide a purchase order or a signed Total Recreation Products, Inc. (hereafter described as TRP) quote, assigned to GameTime. Neither general contractor nor subcontractor contracts can be accepted. Purchase documents that contain indemnity or hold harmless conditions cannot be accepted. Retainage is not permitted. The following must be received before your order can be processed: complete billing and shipping addresses, a contact name and phone #, and all color choices. Manufacturer's colors may vary from year to year. You are responsible for ensuring that any required submittal approvals are completed before placing your order for processing. TRP reserves the right to limit submittals to one copy. Shop drawings, blueprints, sepias, are not available. Closeout documents may be limited to GameTime or TRP standard issue. If Sales Tax Exempt, a copy of your tax exemption form or resale certificate must accompany your order, or any applicable sales tax, will be added to your invoice. Most GameTime products are shipped from the Ft. Payne, AL plant. GameTime cannot hold orders or store equipment. Equipment is invoiced when shipped. If a cash sale, your payment must be received in full before the order will be processed. Contractors must also provide copies of current, fully executed bid/performance/payment bonds, as applicable. Pricing shown does not include any charges for permits, bonding, prevailing wage, or additional insured certifications.

Unless otherwise noted, any quantity of surfacing or playcurbs quoted has been calculated specifically for the equipment and layout shown. No additional surfacing or curbing is included, and no allowance has been made, for an unleveled, convoluted or larger site, or for a different layout. Neither GameTime nor TRP is responsible for any surface, curbing, border, or drain that is provided by others. Also please confirm that your area is adequate for the equipment that you are purchasing.

Installation charges, if quoted, are for a "standard" installation unless specifically noted to be otherwise. Installation charges are due upon completion. Standard installations are based upon a soil work site, that is freely accessible by truck, (no fencing, tree/landscaping or utility obstacles, etc.), and level, (+/- 1-2% maximum slope). An accessible water source must be available to the installer. Any site work that is not expressly described is excluded. Standard installation does not include any extra or additional machinery, drillers, etc., for rock excavation. If rock conditions are encountered, additional charges will apply.

Standard installations generally require from 2-10 business days to complete, depending upon the amount and type of equipment, site conditions, weather, and the installer's schedule. Work may or may not be performed in consecutive days. Playcurbs are staked in, not set in concrete. Engineered wood fiber and shredded rubber surfacings are spread, not compacted, rolled, or watered. Landscape timbers are not warranted. The Customer is responsible for locating and clearly marking all underground utilities in the installation area before any installation work can begin. The installer is not responsible for damages, repairs, or discontinuance of business due to damaged utilities.

If applicable, sprinkler system locates, re-working and repairs are excluded from installation charges. Installation of all products, (equipment, borders, fall surfacing and amenities) are as quoted and approved by acceptance of quotes and drawings. As a precautionary measure, work in progress areas will be taped off at the end of the workday. Pier spoils from installation shall be spread at site, site will be left rough grade. The installer is not responsible for any damages or re-work resulting from after hours events or activities during the work in progress period. Temporary fencing is only provided by specific request, and additional charges will apply. Collectively and/or individually, not the manufacturer, TRP, their representatives, nor the installation company shall be held liable for any damages resulting from misuse, vandalism, or neglect. Any deviations from approved and accepted placement of all items, along with additional work, over and above quoted items, will be chargeable to the customer. Once work is completed the customer will be notified if present at the job site, and all responsibility of any new work will be transferred to the customer. The customer is responsible for maintaining the integrity of completed installation work until all components have seated and/or cured (concrete footings, etc.). Your project site must be completely prepared and ready to receive your equipment before any installation work begins. Acquisition of any and all permits is the sole responsibility of the customer. Additional charges may be billed for any extra hours or trips needed as a result of the work site not being ready. Neither the installation contractor, GameTime nor TRP will be responsible for delays caused by shortages, incorrect parts, weather conditions, other contractors, or lack of site readiness.

If you are receiving your equipment, you are responsible for unloading and accepting delivery from the freight company and reporting any damaged freight or shortages on the freight bill at the time. You will also be responsible for a complete inventory of your received equipment and reporting any discrepancies to us immediately. Neither the freight company nor the manufacturer will resolve shipment discrepancies that are not reported immediately. Make sure that all items have been received before any type of installation work is scheduled. The freight carrier will be instructed to call your designated contact 24 hours before delivery to arrange a delivery appointment.

Once accepted, orders can only be changed or canceled with the consent of GameTime and TRP, and on terms that will indemnify them against loss. Changed or canceled orders are subject to a \$100.00 service charge. Additionally, canceled orders are subject to a 25% restocking fee, plus freight charges (to and from). Built-to-order equipment orders are non-cancelable. Changes to orders that have been shipped and invoiced are subject to the above \$100.00 service charge plus additional restocking/return charges of 25%. Non-returnable items shall be charged at full invoice value. Any return transportation charges shall be for the Buyer's account. Replacement parts are also subject to the cancellation/returns policy. Please carefully review any research information that has been sent to you and confirm that you are ordering the correct replacement parts for your equipment. This quotation is valid 30 days. After 30 days, please request an updated quote. Prices may be subject to material and fuel surcharges at the time of shipment and are subject to change without notice. Current prices will apply at the time of shipment. Acceptance of this quote indicates your agreement to GameTime's credit terms, which are net 30 days, FOB shipping with approved credit. Any deviations from this proposal may invalidate the quoted pricing and/or terms.



c/o Total Recreation Products, Inc.
17802 Grant Road Cypress, Texas 77429
Phone: 281-351-2402
Toll Free: 800-392-9909
Fax: 281-351-2493

06/09/2021
Quote #101606-01-01

TM-06021-21 City of Woodcreek

THIS QUOTATION IS SUBJECT TO POLICES IN THE CURRENT GAMETIME PARK AND PLAYGROUND CATALOG AND THE FOLLOWING TERMS AND CONDITIONS. OUR QUOTATION IS BASED ON SHIPMENT OF ALL ITEMS AT ONE TIME TO A SINGLE DESTINATION, UNLESS NOTED, AND CHANGES ARE SUBJECT TO PRICE ADJUSTMENT. PURCHASES IN EXCESS OF \$1,000.00 TO BE SUPPORTED BY YOUR WRITTEN PURCHASE ORDER MADE OUT TO GAMETIME, C/O TOTAL RECREATION.

Please complete and return with your required form of payment:

Acceptance of quotation:

Accepted By (printed): _____

P.O. No: _____

Signature: _____

Date: _____

Title: _____

Phone: _____

Facsimile: _____

Purchase Amount: **\$138,633.80**

Order Information:

Bill To: _____

Ship To: _____

Company: _____

Company: _____

Attn: _____

Attn: _____

Address: _____

Address: _____

City, State, Zip: _____

City, State, Zip: _____

Contact: _____

Contact: _____

Email Address: _____

Email Address: _____

Tel: _____

Tel: _____

Fax: _____

Fax: _____

For non-taxable purchases: Please also provide a copy of your Sales Tax Exemption Certificate or Resale Certificate.

CREEKSIDE PROPERTY ADDENDUM

1. Base equipment cost w/installation:	\$138,633.80
2. Two bike racks, for 12 bikes:	\$1800.00
3. Additional Comfort Package B:	\$2200.00
4. West/South side demising fence:	\$12,000.00
5. 4' x 150' DG pathway:	\$3600.00
6. Parking space:	\$1900.00
7. Landscaping:	\$1500.00
8. Construction fence rental:	\$1500.00
9. Contingency:	\$1000.00

Total ROM Cost:

\$164,133.80