



**PUBLIC
RESTROOM
COMPANY**

Building Better Places To Go.SM



PRODUCT CATALOG

www.publicrestroomcompany.com | 888.888.2060

PRC PRODUCT LINES

RESTROOMS

PAGES

Playground Series	6 - 9
Sports Park Series	10 - 12
Stadium Series	13, 16
Family Series	14 - 16

CONCESSIONS

All Models	17, 19
------------------	--------

SHOWERS

All Models	18 - 19
------------------	---------

SPECIALTY

All Specialty	20 - 21
---------------------	---------

STORAGE

All Models	22 - 23
------------------	---------

COMPANY OVERVIEW

Public Restroom Company (PRC) is a design, build, and installation firm of prefabricated public restrooms and other park buildings for over forty years. Our modular construction approach allows us to customize any restroom or building by adding on for storage, offices, showers, concessions, or whatever you have in mind. We are driven to design and build architecturally pleasing, safer, cleaner, odor-free, vandal-resistant, and longer-lasting public restrooms for parks, marinas, beaches, water parks, campgrounds, and transit stations.

PRC is a family-owned and managed company by a brother and sister team, Chad Kaufman and Katie Kaufman-Sherin. After many years working under their late father and company founder, Chuck Kaufman, they took control of the business in 2019 and continue the PRC legacy today. Chuck was a public restroom industry front-runner who was always looking to develop innovative ways to build better restrooms and he did exactly that. Over the years, Chuck and the PRC Team introduced new design ideas to help reduce vandalism, continually improved the quality of components installed in each building until they were the best in the market, and developed a proprietary concrete additive that makes our buildings' concrete floors and walls water resistant, non-staining, and odor-free. These are only a few of his progressive changes to the standard public restroom building that make our buildings truly stand out from the rest.

Over the years, PRC has built one of the largest existing design libraries with plans for: public restrooms, showers, storage, concession stands, scorekeeper booths, laundry rooms, maintenance rooms, and so much more. We strive to design the best looking buildings, but also build buildings that last. We proudly stand behind our quality and finished product with an industry-leading warranty of 20 years structural and 5 years for parts.

Our mission is ***Building Better Places To Go***SM and we are committed to do that every day.



Katie Kaufman-Sherin & Chad Kaufman

To see more of what we can do,
visit our project gallery at:
publicrestroomcompany.com

THE PRC PROCESS



▶ **STEP ONE | SIZE**

What is the **general size** of the park or outdoor space you are planning a restroom for?

- Is this a smaller, neighborhood park?
- Or will it be a larger, multi-sports complex?

It may be difficult to approximate number of users per hour, so first understand the size and primary activities at the location and then determine the number of fixtures needed. Our restroom models are separated into various series to accommodate both size and purpose. Our Team can help guide you through this step to determine the best model.

▶ **STEP TWO | EXTRA FEATURES**

Now that you've decided on how many basic restroom fixtures are needed to accommodate peak usage. The next step is to identify any unique features to the location, typical weather patterns, and if any modular add-ons are needed. Here are some things to consider:

- Incorporating drinking fountains or a water bottle filler is an appreciated extra convenience whether at a playground or trailhead location.
- Does the location get really hot or experience harsh weather? Might be a good idea to add a covered entrance for shade and protection from any outside elements.
- Dog Park? Include a pet fountain, dog washing station, or both!
- For Sports Parks, it's always a good idea to add more storage space for park maintenance equipment or include a concession stand.

▶ **STEP THREE | DESIGN & FINISHES**

Last step is the fun part, deciding on the overall look for your building and selecting all exterior/interior finishes and colors. Sometimes this can also be the most difficult part, so to help with that we offer one of the largest design libraries of custom restrooms and buildings. This can help guide you on what would look best to match the existing site architecture and be in harmony with the location's natural landscape.

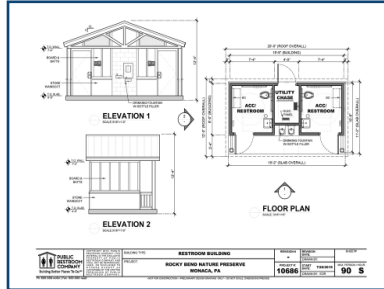


PRC BUILDING WARRANTY

20 YEAR STRUCTURAL | 5 YEAR PARTS & FIXTURES



1 | Design & Renderings for Client Approval



2 | Engineered Drawings & State Approved Plans



3 | Engineered Rebar Mat ready for Concrete Pour



4 | Finished Slab of Specialized Moisture Resistant Concrete



5 | CMU Walls Constructed on Concrete Slab



6 | Turnkey Electrical, Plumbing, and Fixtures



7 | Roof is Installed on CMU Walls



8 | Shrink Wrapped prior to Transportation to Site



9 | Sub-Grade Pad Preparation



10 | Drop-In-Place Installation with a Crane



11 | Finished Building & Ready to Go! (literally)

RESTROOMS | PLAYGROUND SERIES

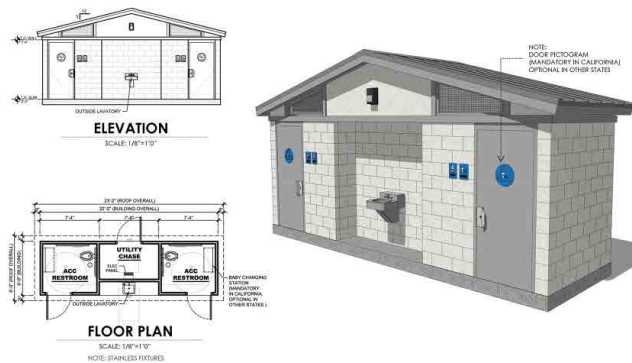


PS-011 Model

- One Single Occupant Restroom
- (1) Toilet | (1) Interior Sink
- ADA Compliant
- Vandal Resistant Components & Fixtures
- 45 Users per Hour

PS-111 Model

- One Single Occupant Restroom
- (1) Urinal | (1) Toilet | (1) Interior Sink
- ADA Compliant
- Vandal Resistant Components & Fixtures
- 45 Users per Hour

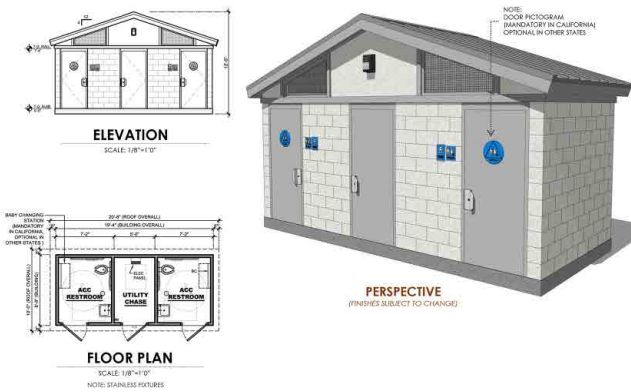


PS-021-ES Model

- Two Single Occupant Restrooms
- (2) Toilets | (1) Exterior Sink
- ADA Compliant
- Vandal Resistant Components & Fixtures
- 90 Users per Hour

***Note:** Drinking fountains and water bottle fillers are common add-ons to this model with the alcove already in place.

| PS-022 | //
 Best selling model in the
 Playground Series

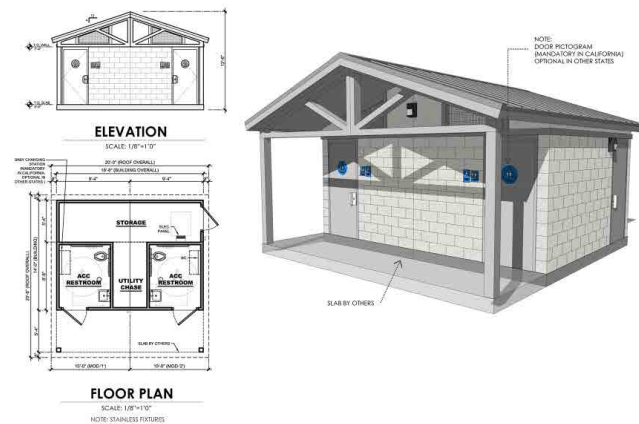


PS-022 Model

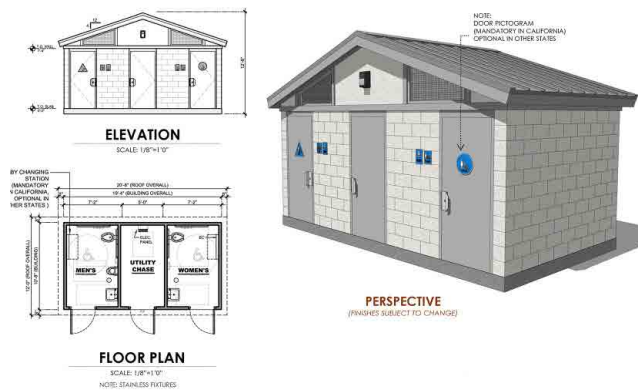
- Two Single Occupant Restrooms
- (2) Toilets | (2) Interior Sinks
- ADA Compliant
- Vandal Resistant Components & Fixtures
- 90 Users per Hour

PS-022-ST-CE-2M Model

- Two Single Occupant Restrooms
- (2) Toilets | (2) Interior Sinks
- Covered Entry + Storage Room
- ADA Compliant
- Vandal Resistant Components & Fixtures
- Building is composed of 2 Mods
- 90 Users per Hour



RESTROOMS | PLAYGROUND SERIES

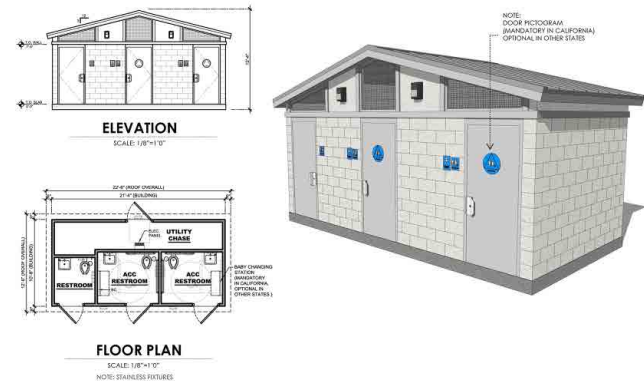


PS-122 Model

- Two Single Occupant Restrooms
- (1) Urinal | (2) Toilets | (2) Interior Sinks
- ADA Compliant
- Vandal Resistant Components & Fixtures
- 90 Users per Hour

PS-033 Model

- Three Single Occupant Restrooms
- (3) Toilets | (3) Interior Sinks
- ADA Compliant
- Vandal Resistant Components & Fixtures
- 135 Users per Hour



COMMON ADDITIONS AND CHANGES

Fixture & Feature Add-Ons:

- Drinking Fountains, Water Bottle Fillers, Green Screens, Pet Fountain, Trellis, Covered Entrance, Privacy Site Screens, Exterior Sinks, Custom Tiled Alcoves

Modular Add-Ons:

- Storage, Concession, Office Space, and Showers

Other Changes:

- Relocate the utility room access door to the back of the building, this can be done for most plans where it is located on the front side of the building.

PLAYGROUND SERIES GALLERY



Model: PS-011



Model: PS-011



Model: PS-021-ES



Model: PS-022



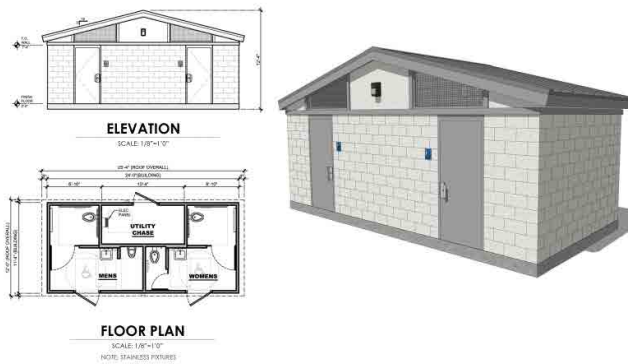
Model: PS-033



Model: PS-033

RESTROOMS | SPORTS PARK SERIES

SP-132 Model



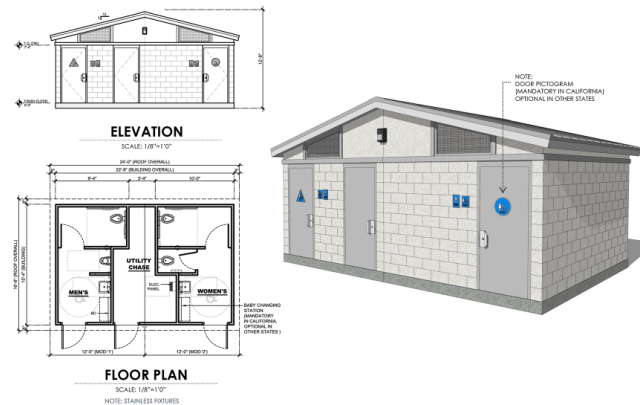
- Two Multiple Occupant Restrooms
- (1) Urinal | (3) Toilets | (2) Interior Sinks
- ADA Compliant
- Vandal Resistant Components & Fixtures
- 180 Users per Hour

***Note:** If the building is located in California, you must use the SP-132-2M floor plan (below) for code compliance.

SP-132-2M Model

- Two Multiple Occupant Restrooms
- (1) Urinal | (3) Toilets | (2) Interior Sinks
- ADA Compliant
- Vandal Resistant Components & Fixtures
- Building is composed of 2 Mods
- 180 Users per Hour

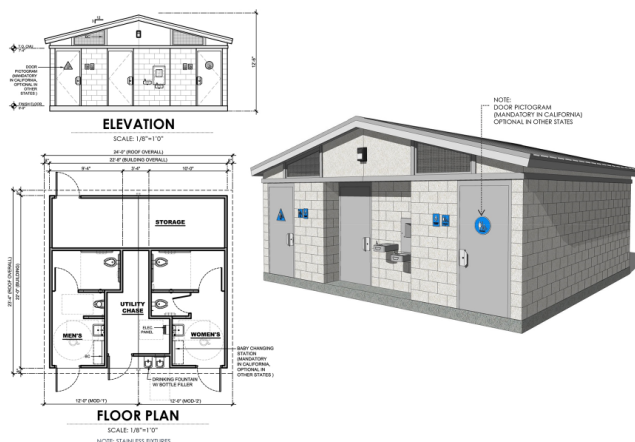
***Note:** This is the code compliant floor plan for the State of California.



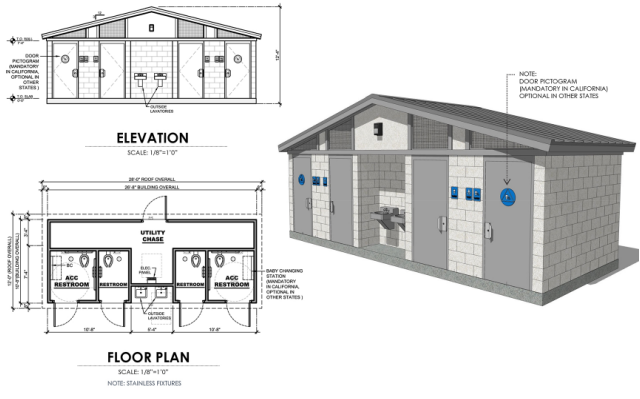
SP-132-ST-2M Model

- Two Multiple Occupant Restrooms + Storage Room
- (1) Urinal | (3) Toilets | (2) Interior Sinks
- ADA Compliant
- Vandal Resistant Components & Fixtures
- Building is composed of 2 Mods
- 180 Users per Hour

***Note:** Drinking fountains and water bottle fillers are common add-ons to this model with the alcove already in place.



| SP-132-2M | //
 Best selling model in the Sports Park Series

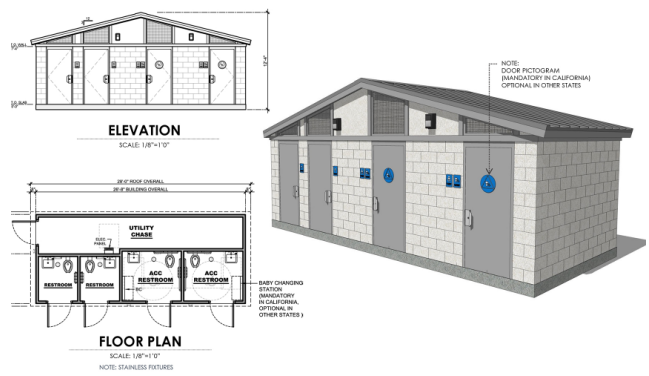


SP-042-ES Model

- Four Single Occupant Restrooms
- (4) Toilets | (2) Exterior Sinks
- ADA Compliant
- Vandal Resistant Components & Fixtures
- 180 Users per Hour

SP-044 Model

- Four Single Occupant Restrooms
- (4) Toilets | (4) Interior Sinks
- ADA Compliant
- Vandal Resistant Components & Fixtures
- 180 Users per Hour



SPORTS PARK SERIES GALLERY



Model: SP-132



Model: SP-132



Model: SP-132-ST-2M



Model: SP-132-2M

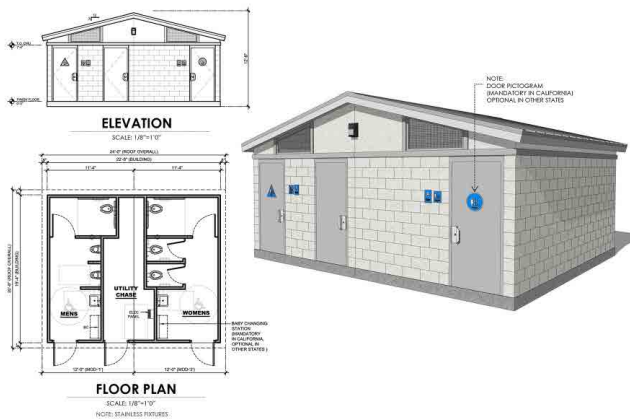


Model: SP-044-2M



Model: SP-044

RESTROOMS | STADIUM SERIES

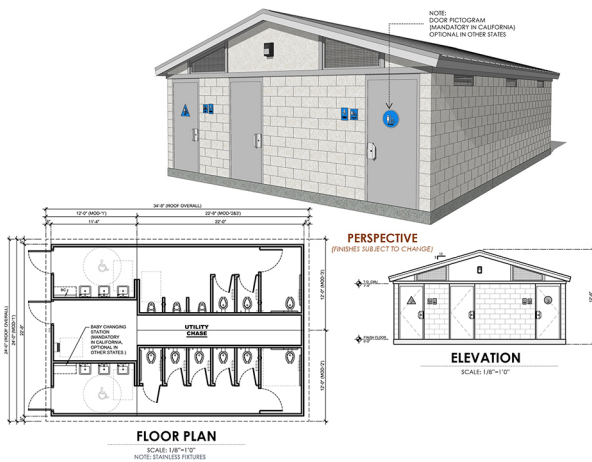
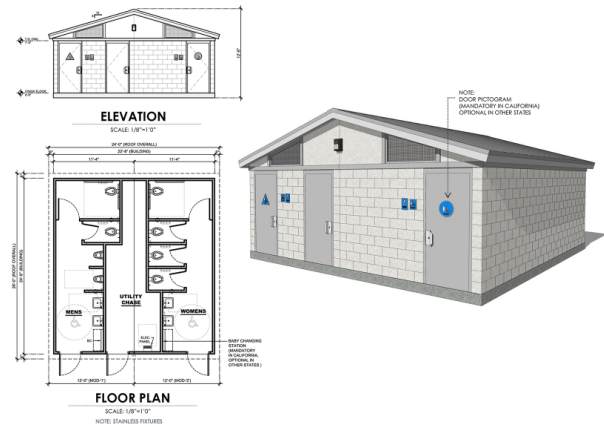


SS-242 Model

- Two Multiple Occupant Restrooms
- (2) Urinals | (4) Toilets | (2) Interior Sinks
- ADA Compliant
- Vandal Resistant Components & Fixtures
- 270 Users per Hour

SS-264 Model

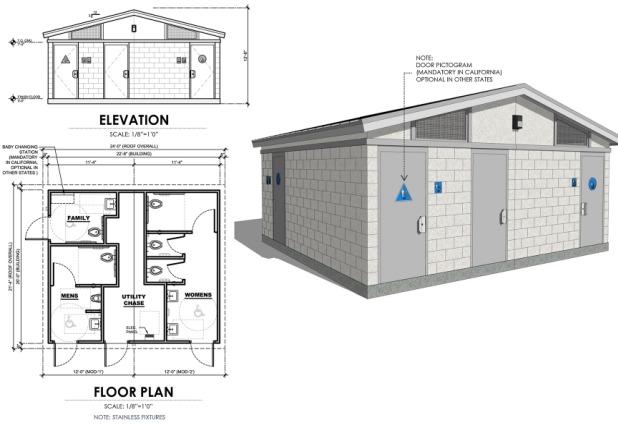
- Two Multiple Occupant Restrooms
- (2) Urinals | (6) Toilets | (4) Interior Sinks
- ADA Compliant
- Vandal Resistant Components & Fixtures
- 360 Users per Hour



SS-396 Model

- Two Multiple Occupant Restrooms
- (3) Urinals | (9) Toilets | (6) Interior Sinks
- ADA Compliant
- Vandal Resistant Components & Fixtures
- 540 Users per Hour

RESTROOMS | FAMILY SERIES

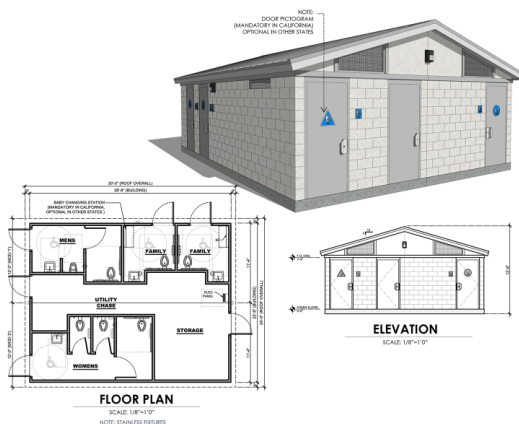
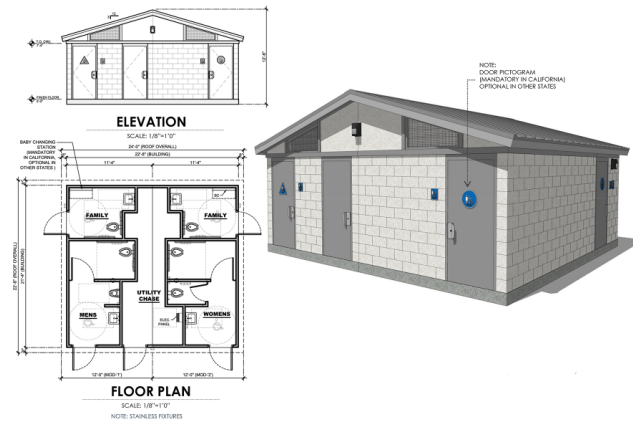


SS-154-FAM Model

- Two Multiple Occupant Restrooms + (1) Family Restroom
- (1) Urinal | (5) Toilets | (4) Interior Sinks
- ADA Compliant
- Vandal Resistant Components & Fixtures
- 255 Users per Hour


SS-154-2FAM Model

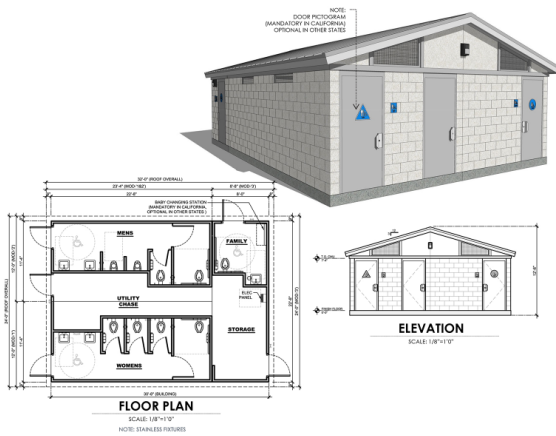
- Two Multiple Occupant Restrooms + (2) Family Restrooms
- (1) Urinal | (5) Toilets | (4) Interior Sinks
- ADA Compliant
- Vandal Resistant Components & Fixtures
- 270 Users per Hour



SS-164-2FAM-ST Model

- Two Multiple Occupant Restrooms + (2) Family Restrooms + Storage Room
- (1) Urinal | (6) Toilets | (4) Interior Sinks
- ADA Compliant
- Vandal Resistant Components & Fixtures
- 300 Users per Hour

| SS-154-2FAM | 
 Best selling model in the
 Family Series



SS-275-FAM-ST Model

- Two Multiple Occupant Restrooms + (1) Family Restroom + Storage Room
- (2) Urinals | (7) Toilets | (5) Interior Sinks
- ADA Compliant
- Vandal Resistant Components & Fixtures
- 405 Users per Hour

STADIUM & FAMILY SERIES GALLERY



Model: SS-154-FAM



Model: SS-154-2FAM



Model: SS-242



Model: SS-242

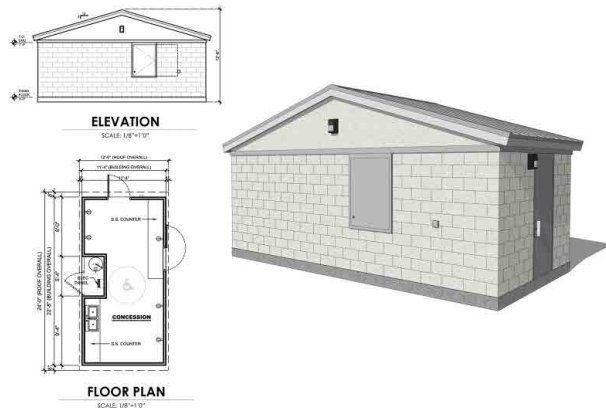


Model: SS-164-2FAM-ST



Model: SS-394

CONCESSIONS

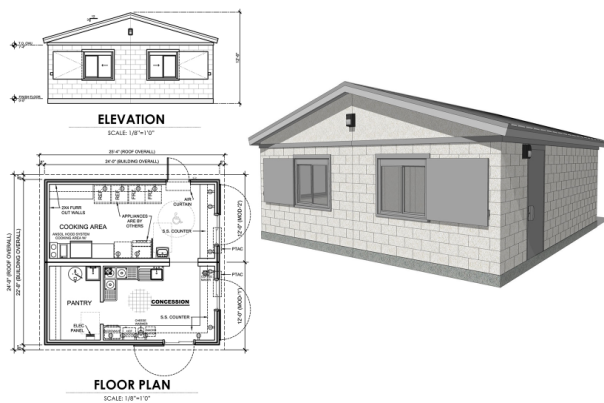
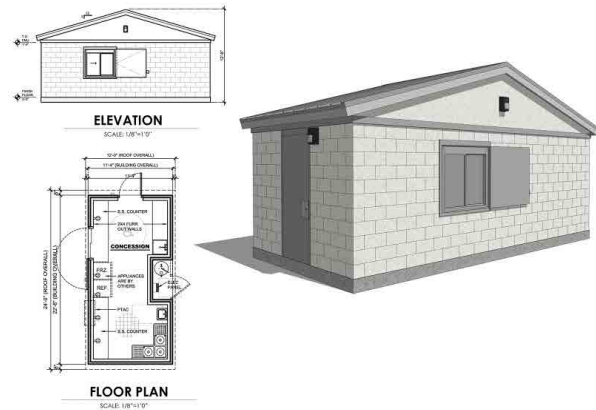


CN1 Model

- Level 1 Concession
- Able to serve: canned beverages, bottled water, and individually packaged foods (ex. chips & candy)
- Base level concession stand
- ADA & Health Code Compliant
- This model is best when serving only pre-packaged food and beverage items that do not require preparation.

CN2 Model

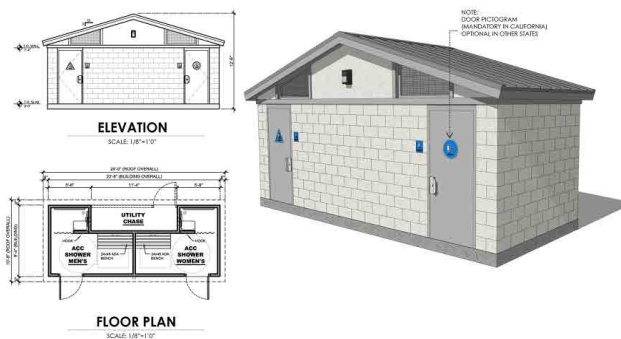
- Level 2 Concession
- Able to serve: ice, coffee, fountain drinks, nachos, hot dogs, and popcorn
- ADA & Health Code Compliant
- This model is best for serving food and beverages that only require minimal preparation and limited contact. Able to serve ice and offer warmed drinks and food, not a full-service kitchen.



CN3 Model

- Level 3 Concession
- Able to serve: ice, coffee, fountain drinks, nachos, hot dogs, and popcorn + **grilled and fried foods**
- ADA & Health Code Compliant
- This model is best for having the ability to serve most all foods, dependent on local health codes. Full-service kitchen for food preparation, anything that may require rinsing, washing, or thawing.

SHOWERS

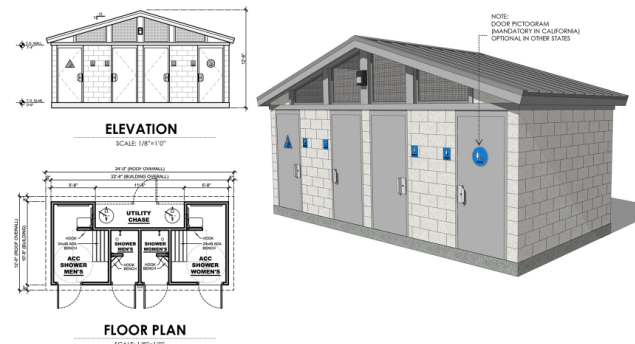


SH2 Model

- Two Single Occupant Shower Rooms
- ADA Compliant
- Vandal Resistant Components & Fixtures

SH4 Model

- Four Single Occupant Shower Rooms
- ADA Compliant
- Vandal Resistant Components & Fixtures



SHOWER OPTIONS

PRC's shower buildings can be built as standalone buildings or added on to any of our restroom models or other floor plans. Shower fixtures are typically installed in the interior, but can be relocated to the building's exterior or can be placed in both locations.

Locker rooms and individual changing rooms are other popular additions when including showers.

Exterior Showers



Interior Shower Stalls



ADA Shower Stall

SHOWER & CONCESSION GALLERY



Model: PS-022-SH2-ST



Model: SS-264-ST + CN2



Model: SS-242-SH4



Model: CN3



Model: SP-133-SH4-ST | Exterior Showers



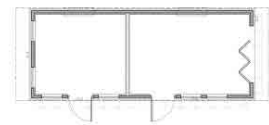
Model: SS-385-SH2-ST + CN2

SPECIALTY BUILDINGS



We go beyond just restrooms and can build almost any prefabricated building you envision.

While these buildings and floor plans are custom, as with every project, we will provide you with 3D renderings to start with so we can get the exact layout and finished look you are trying to achieve.



FLOOR PLAN
SCALE: NOT TO SCALE



Below is a list of various buildings we have built for customers to date:

- Pro Shop for Golf Course & Tennis Center
- Ticket Booths & Kiosks
- Transit Stations
- Meeting Rooms & Offices
- Lifeguard Station
- Scorekeeper Booths
- Multi-Use Building
- Laundry Rooms
- Trash Enclosures

SPECIALTY BUILDING GALLERY



Ticket Booth



Kiosk & Information Center



Lifeguard Station | Shower & Restrooms



Laundry Room + Restrooms

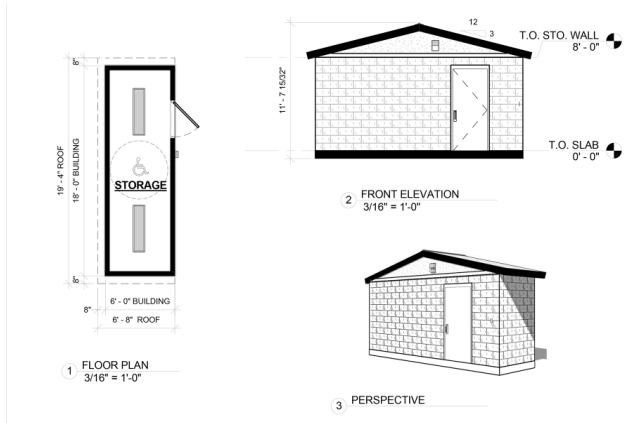


Meeting Room



Scorekeeper Booth

STORAGE BUILDINGS

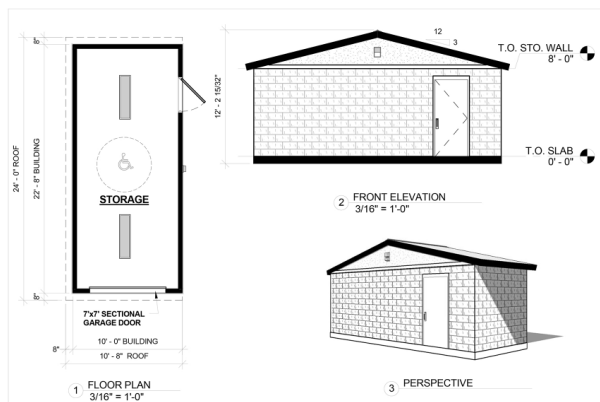
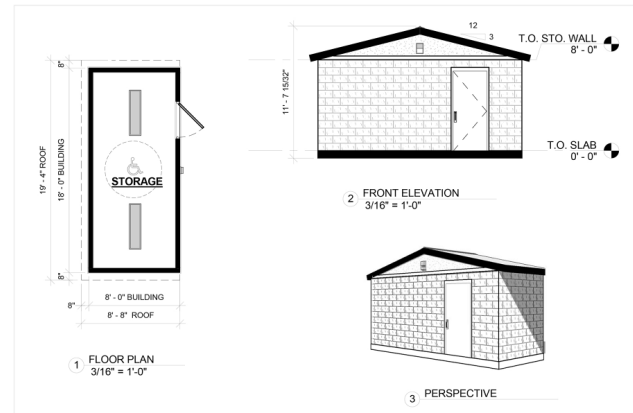


ST-6 Model

- Adds over 135 square feet of storage space for maintenance
- Designed to extend an 18' ft. wide building by an additional 6' ft.

ST-8 Model

- Adds over 180 square feet of storage space for maintenance
- Designed to extend an 18' ft. wide building by an additional 8' ft.
- Able to add a garage door to allow easy access for larger equipment and tools (ex. lawn mower)



ST-10 Model

- Adds over 225 square feet of storage space for maintenance
- Designed to extend an 22' 8" wide building by an additional 10' ft.
- Able to add a garage door to allow easy access for larger equipment and tools, or a small vehicle (ex. lawn mower, ATV)



Storage with Single Garage Door



Storage with Double Garage Doors



ST-6 Model attached to Restroom



ST-10 Model attached to Restroom

If you are looking to install the highest quality building with the best overall aesthetics, your search ends here. With our flexible architecture and continual improvement process, we promise to deliver you the best looking and longest lasting restroom that is easy to maintain. This is why we offer a twenty (20) year structural warranty and a five (5) year warranty on parts and fixtures, the leading warranty offered within the industry.

Our team will walk you through the entire process and in the end, the building can be installed and up and running in only a few days. A complete turnkey building, just like we promise.

We look forward to helping you with your next project.



www.publicrestroomcompany.com | 888.888.2060

V2.2022