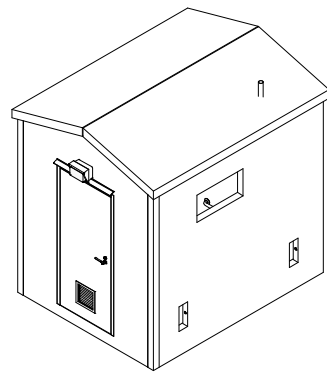


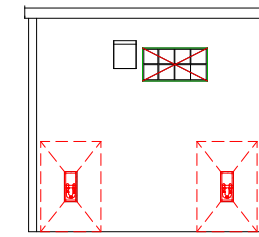
① 3D PANEL A & PANEL B TOP VIEW - ELECTRICAL



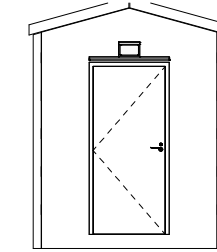
② 3D PANEL C & PANEL D TOP VIEW - ELECTRICAL

DRAWING INDEX - MEP

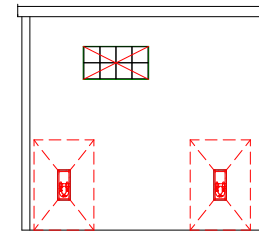
Count	SHEET #	SHEET DESCRIPTION	REV. #	REV. DATE	REV. DESCRIPTION
1	E0.0	3D VIEWS & DRAWING INDEX			
1	E0.1	LAYOUT DRAWING			
1	E0.2	PROJECT NOTES			
1	E0.3	ABBREVIATIONS AND SYMBOLS			
1	E0.4	PICK LISTS AND CUT SCHEDULES			
1	E0.5	EQUIPMENT LIST			
1	E0.6	WALL & ENCLOSURE PENETRATION DETAILS			
1	E2.0	FLOOR PLAN (ELECTRICAL)			
1	E3.0	PLAN VIEW (COORDINATION)			
1	E3.1	RCP (POWER & LIGHTING)			
1	E4.1	ENDWALL PANEL A (EXTERIOR)			
1	E4.2	SIDEWALL PANEL B (EXTERIOR)			
1	E4.3	ENDWALL PANEL C (EXTERIOR)			
1	E4.4	SIDEWALL PANEL D (EXTERIOR)			
1	E5.1	ENDWALL PANEL A (INTERIOR)			
1	E5.2	SIDEWALL PANEL B (INTERIOR)			
1	E5.3	ENDWALL PANEL C (INTERIOR)			
1	E5.4	SIDEWALL PANEL D (INTERIOR)			
1	E6.5	PARTITION G (B SIDE)			
1	E6.6	PARTITION G (D SIDE)			
1	E7.0	ACP-1 PANEL SCHEDULE			
1	E7.2	WIRING DIAGRAM(S)			
Grand total: 22					



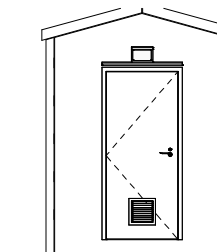
③ PANEL A ELEVATION - MEP
1/4" = 1'-0"



④ PANEL B ELEVATION - MEP
1/4" = 1'-0"



⑤ PANEL C ELEVATION - MEP
1/4" = 1'-0"



⑥ PANEL D ELEVATION - MEP
1/4" = 1'-0"

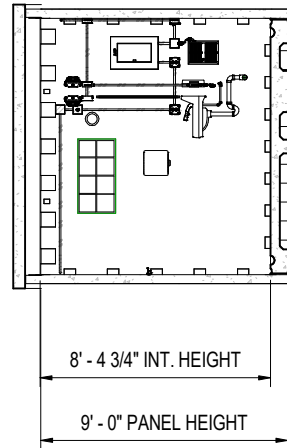
PRELIMINARY SUBJECT TO OWNER REVIEW

REV. NO.	DESCRIPTION	DATE	DWN BY
		1090 Industrial Blvd. Bessemer, AL 35022 Ph# 205-980-4565 F# 877-675-5551 Email: info@modularconnections.com	JOB NO. MCP1537 - MC5341
TITLE 3D VIEWS & DRAWING INDEX		DATE 11/7/23	DRAWN BY OS
DRAWING NO. D22246		SCALE PER DRAWING	SHEET E0.0

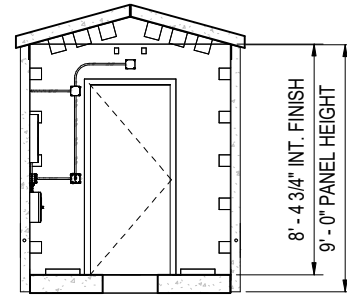
1/24/2024 8:11:12 AM C:\Revit\MCS41_CENTL_S_v06.02_osullivan\MTE5W.rvt

NOTICE: These drawings and specifications are the property of Modular Connections, LLC. All information contained herein which is not known generally in the field of Modular Connections, LLC shall be confidential except to any extent to which it is established to have been known previously from sources other than Modular Connections, LLC. These drawings and specifications may not be reproduced, copied or used as the basis for the manufacture or sale of apparatus without written permission.

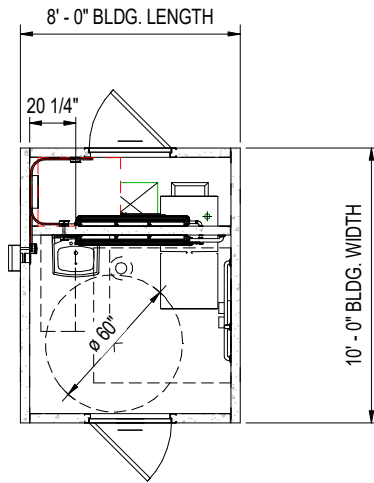
1/24/2024 8:11:14 AM
 C:\Revit\MCS341_CENTL_S_v06.02_usullivan\M7E5W.rvt



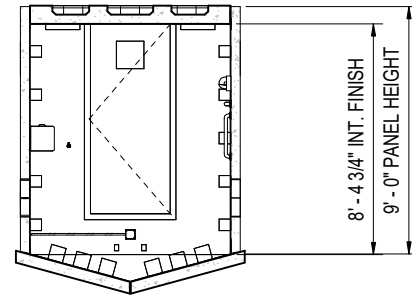
② PANEL A - MEP
 1 : 42



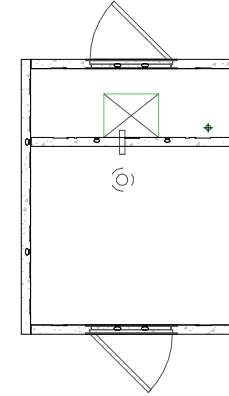
③ PANEL B - MEP
 1 : 42



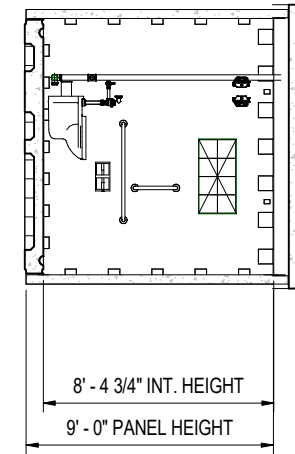
① FLOOR PLAN - MEP
 1 : 42



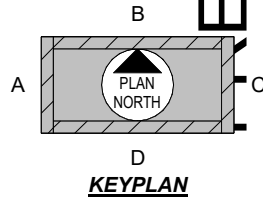
⑤ PANEL D - MEP
 1 : 42



⑥ REFLECTED CEILING - MEP
 1 : 42



④ PANEL C - MEP
 1 : 42



REV NO.	DESCRIPTION	DATE	DWN BY
	1090 Industrial Blvd. Bessemer, AL 35022 Ph# 205-980-4565 F# 877-675-5851 Email: info@modularconnections.com	11/7/23	
MODULAR CONNECTIONS <small>MODULAR CONNECTIONS, LLC All Rights Reserved</small>		DRAWING NO. D22246	JOB NO. MCP1537 - MC5341
TITLE LAYOUT DRAWING		SCALE PER DRAWING	DRAWN BY OS CHECKED BY WHS
			SHEET E0.1

PRELIMINARY SUBJECT TO OWNER REVIEW

PROJECT DATA - SOUTH CAROLINA

DESIGN CODES:

2021 INTERNATIONAL BUILDING CODE WITH SC AMMENDMENTS
 2021 INTERNATIONAL RESIDENTIAL CODE WITH SC AMMENDMENTS
 2021 INTERNATIONAL MECHANICAL CODE WITH SC AMMENDMENTS
 2021 INTERNATIONAL PLUMBING CODE WITH SC AMMENDMENTS
 2021 INTERNATIONAL FUEL GAS CODE WITH SC AMMENDMENTS
 2021 INTERNATIONAL FIRE CODE WITH SC AMMENDMENTS
 2020 NATIONAL ELECTRICAL CODE (NFPA 70) WITH SC AMMENDMENTS
 2020 INTERNATIONAL ENERGY CONSERVATION CODE PER SECTION 501.2, USE ASHRAE/IESNA 90.1 2007 SECTION 2.3C - EXEMPT

NOTES:


1. MAIN DISCONNECT GROUND WIRE MUST BE ATTACHED TO GROUNDING SYSTEM BEFORE APPLYING POWER.
2. ALL WIRE AMPACITIES BASED ON TABLE 310-16 NEC, 310-15(b)(2)(a). ALL WIRE IS RATED AT 75°C W/ 75°C CRATED LUGS. CONDUIT FILL BASED ON ANNEX C NEC (TABLE C1).
3. ALL SERVICE ENTRANCE EQUIPMENT SHALL BE LISTED FOR ITS USE.
4. LOCAL BUILDING OFFICIALS: ALL THE ITEMS THAT ARE NOT COVERED IN THE APPROVAL PROCESS ARE TO BE SITE INSTALLED. ALL SITE INSTALLED ITEMS ARE SUBJECT TO LOCAL REVIEW, APPROVAL, AND INSPECTION PROCESS.
5. MOUNT GROUND CLAMP TO SIDE OF CABLE TRAY WITH WIRE LAYING ON RUNGS AND TYRAP TO EVERY OTHER RUNG.
6. RUN 18 AWG THHN STRANDED COPPER FOR ALARM WIRES. COIL AND TAG DOOR CONTACTS AND SMOKE DETECTORS. COIL UP 40FT OF ALARM WIRES IN LIQUID TIGHT NON-METALLIC FLEXIBLE CONDUIT ON CABLE TRAY FOR CUSTOMER CONNECTION. ALARMS TO BE WIRED N/O.
7. USE UNISTRUT ON BOTTOM OF CABLE TRAY.
8. ANY CHEMICALS TO BE STORED IN THIS BUILDING SHALL NOT EXCEED AMOUNT LISTED IN TABLES 307.1 AND 307.1(2) OF THE REFERENCED IBC.
9. IF BATTERIES WITH AN ELECTROLYTE CAPACITY OF MORE THAN 50 GALLONS ARE TO BE INSTALLED WITHIN THIS BUILDING, ONE OF THE FOLLOWING ALTERNATIVES MUST ALSO BE INSTALLED: 1.) AN EXHAUST FAN WITH A HYDROGEN LIMIT SWITCH SO AS TO LIMIT THE HYDROGEN TO 1% OF THE TOTAL VOLUME OF THE ROOM; OR 2.) CONTINUOUS VENTILATION SHALL BE PROVIDED AT A RATE NOT LESS THAN 1 CUBIC FOOT PER MINUTE PER SQUARE FOOT OF FLOOR AREA OF ROOM.
10. ALL NEUTRALS AFTER MAIN DISCONNECT SHALL BE ISOLATED FROM GROUND.

DESIGN LOADS:

FLOOR LIVE LOAD	100 PSF
FLOOR DEAD LOAD	39 PSF
ROOF LIVE LOAD	50 PSF
ROOF DEAD LOAD	49.7 PSF
RISK CATEGORY	II
GROUND SNOW LOAD	5 PSF
SNOW LOAD IMPORTANCE FACTOR	1
SNOW EXPOSURE FACTOR	1.2
THERMAL FACTOR	1.2
FLAT ROOF SNOW LOAD	5.04 PSF
WIND VELOCITY (3-SEC GUST, Vult)	150 MPH
WIND VELOCITY (3-SEC GUST, Vasd)	116 MPH
WIND EXPOSURE CATEGORY	C
INTERNAL PRESSURE COEFFICIENT	±0.18
WIND LOAD HORIZONTAL (MWFRS)	35.79 PSF
WIND LOAD (UPLIFT) (MWFRS)	53.48 PSF
WIND LOAD HORIZONTAL (C & C, ZONE 4)	53.27 PSF
WIND LOAD HORIZONTAL (C & C, ZONE 5)	65.76 PSF
WIND LOAD (UPLIFT) (C & C, ZONE 1)	78.25 PSF
WIND LOAD (UPLIFT) (C & C, ZONE 2)	103.22 PSF
WIND LOAD (UPLIFT) (C & C, ZONE 3)	140.68 PSF
WIND LOAD HORIZONTAL (C & C, ZONE 4, Vasd)	31.96 PSF
WIND LOAD HORIZONTAL (C & C, ZONE 5, Vasd)	39.46 PSF
SEISMIC IMPORTANCE FACTOR	1
SPECTRAL RESPONSE ACCELERATION S _{DS}	0.839
SPECTRAL RESPONSE ACCELERATION S _{D1}	0.512
SEISMIC DESIGN CATEGORY	D
SITE CLASS	D
BASIC SEISMIC-FORCE RESISTING SYSTEM	A.5 - BEARING WALL SYSTEMS - INTERMEDIATE PRECAST SHEAR WALLS
DESIGN BASE SHEAR	0.37W
ANALYSIS PROCEDURE	EQUIVALENT LATERAL-FORCE PROCEDURE
OCCUPANCY USE GROUP	S2
CONSTRUCTION TYPE	VB
MINIMUM SETBACK	SEE NOTES FOR A COMMON OR ASSUMED PROPERTY LINE TO COMPLY WITH IBC-2015

① DESIGN LOADS
12" = 1'-0"

PRELIMINARY SUBJECT TO OWNER REVIEW

REV NO.	DESCRIPTION	DATE	DWN BY
	 1090 Industrial Blvd. Bessemer, AL 35022 Ph# 205-980-4565 F# 877-675-5551 Email: info@modularconnections.com	11/7/23	
TITLE	- 10' x 8' x 8'-0" IH	DRAWING NO. D22246	JOB NO. MCP1537 - MC5341
	PROJECT NOTES	SCALE PER DRAWING	DRAWN BY OS CHECKED BY WHS SHEET E0.2

ELECTRICAL ABBREVIATIONS & SYMBOLS LEGEND

ABBREVIATIONS	ABBREVIATIONS (CONT.)	BASIC MATERIALS	FIRE ALARM / DETECTION / SUPPRESSION	LIGHTING																																																																																																																																				
A/C AIR CONDITIONING AC ALTERNATING CURRENT ACP AC PANELBOARD ABV ABOVE ADA AMERICANS WITH DISABILITIES ACT AFF ABOVE FINISHED FLOOR AFG ABOVE FINISHED GRADE AHU AIR HANDLING UNIT AIC AMPERE INTERRUPTING CAPACITY AL ALUMINUM AMP AMPERE ANSI AMERICAN NATIONAL STANDARDS INSTITUTE ASA AMERICAN STANDARDS ASSOCIATION AT AMPERE TRIP ATS AUTOMATIC TRANSFER SWITCH AUX AUXILIARY AWG AMERICAN WIRE GAUGE BC BARE COPPER BKR BREAKER CAB CABINET CKT CIRCUIT CB CIRCUIT BREAKER CATV CABLE TELEVISION CCTV CLOSED CIRCUIT TELEVISION CLG CEILING COAX COAXIAL CABLE COND CONDUCTOR CONN CONNECTION CPU CENTRAL PROCESSING UNIT CT CURRENT TRANSFORMER CU COPPER CW COLD WATER DC DIRECT CURRENT DCP DC PANELBOARD DEG DEGREE DF DEMAND FACTOR DISC DISCONNECT DN DOWN DPST DOUBLE THROW SINGLE THROW EMT ELECTRICAL METALLIC CONDUIT EOL END OF LINE EOR ENGINEER OF RECORD EWC ELECTRIC WATER COOLER EXT EXTERIOR FA FIRE ALARM FAAP FIRE ALARM ANNUNCIATOR PANEL FATC FIRE ALARM TERMINATION CABINET FCU FAN CONTROL UNIT FLA FULL LOAD AMPERES FPU FAN POWER UNIT FT FEET GF GROUND FAULT GFA GROUND FAULT ALARM GFCI GROUND FAULT CIRCUIT INTERRUPTER GND GROUND HP HORSEPOWER HOA HAND-OFF-AUTO HORZ HORIZONTAL IBC INTERNATIONAL BUILDING CODE IECC INTERNATIONAL ENERGY CONSERVATION CODE IMC INTERMEDIATE METALLIC CONDUIT IN INCHES IT INSTANTANEOUS TRIP J-BOX JUNCTION BOX KCMIL ONE THOUSAND CIRCULAR MILS KV KILOVOLT KVA KILOVOLT-AMPERES KW KILOWATT KWH KILOWATT HOURS LBS POUNDS LED LIGHT-EMITTING DIODE LP LIGHTNING PROTECTION LT LIGHT LTG LIGHTING LV LOW VOLTAGE	MAX MAXIMUM MCA MINIMUM CIRCUIT AMPERES MCB MAIN CIRCUIT BREAKER MDP MAIN SERVICE DISTRIBUTION PANEL MIN MINIMUM MLO MAIN LUG ONLY MOCP MAXIMUM OVERCURRENT PROTECTION MSB MAIN SERVICE SWITCHBOARD MTD MOUNTED MTG MOUNTING MTR MOTOR MTS MANUAL TRANSFER SWITCH NC NORMALLY CLOSED NEC NATIONAL ELECTRIC CODE NEMA NATIONAL ELECTRICAL MANUFACTURERS ASSOCIATION NEU NEUTRAL NFPA NATIONAL FIRE PROTECTION ASSOCIATION NIC NOT IN CONTRACT NF NON-FUELED NL NON-LINEAR NO NORMALLY OPEN / NUMBER OL OVERLOAD OSHA OCCUPATIONAL SAFETY & HEALTH ADMINISTRATION P POLE PB PULLBOX PF POWER FACTOR PNL PANEL PRI PRIMARY PVC POLYVINYL CHLORIDE PWR POWER REC RECEPTACLE REF REFRIGERATOR RGS RIGID GALVANIZED STEEL CONDUIT RMS ROOT-MEAN-SQUARE RPM REVOLUTIONS PER MINUTE RTU ROOF TOP UNIT SCA SHORT CIRCUIT AMPERES SD SMOKE DETECTOR SEC SECONDARY S/N SOLID NEUTRAL SPD SURGE PROTECTION DEVICE SPEC SPECIFICATIONS SPKR SPEAKER SPST SINGLE POLE SINGLE THROW SS STAINLESS STEEL SST SOLID STATE TRIP STT SHORT TIME TRIP SUB SUBFEED BRANCH PANEL SW SWITCH SWBD SWITCHBOARD SWGR SWITCHGEAR TEL TELEPHONE TYP TYPICAL UG UNDERGROUND UON UNLESS OTHERWISE NOTED UL UNDERWRITERS LABORATORIES UTIL UTILITY V VOLT VA VOLT-AMPERE VAR VOLT-AMPERE REACTIVE VAV VARIABLE AIR VOLUME VFD VARIABLE FREQUENCY DRIVE W WIRE WP WEATHERPROOF XFMR TRANSFORMER XFR TRANSFER	<table border="1" style="width: 100%; border-collapse: collapse;"> <thead> <tr> <th>SYMBOL</th> <th>DESCRIPTION</th> </tr> </thead> <tbody> <tr><td></td><td>SINGLE POLE SWITCH</td></tr> <tr><td></td><td>3-WAY SWITCH</td></tr> <tr><td></td><td>4-WAY SWITCH</td></tr> <tr><td></td><td>DIMMER SWITCH</td></tr> <tr><td></td><td>DOUBLE POLE SINGLE THROW SWITCH</td></tr> <tr><td></td><td>DOUBLE POLE DOUBLE THROW SWITCH</td></tr> <tr><td></td><td>KEYED SWITCH</td></tr> <tr><td></td><td>OCCUPANCY SENSOR SWITCH</td></tr> <tr><td></td><td>TIMED SWITCH</td></tr> <tr><td></td><td>SIMPLEX RECEPTACLE</td></tr> <tr><td></td><td>DUPLEX RECEPTACLE</td></tr> <tr><td></td><td>TWO DUPLEX RECEPTACLES (QUAD) WITH COMMON COVERPLATE</td></tr> <tr><td></td><td>DUPLEX RECEPTACLE WITH TWO USB PORTS</td></tr> <tr><td></td><td>TWO DUPLEX RECEPTACLES (QUAD) WITH TWO USB PORTS & COMMON COVERPLATE</td></tr> <tr><td></td><td>GFCI RECEPTACLE</td></tr> <tr><td></td><td>IN-USE WEATHERPROOF GFCI RECEPTACLE</td></tr> <tr><td></td><td>TWO GFCI DUPLEX RECEPTACLES (QUAD) WITH COMMON COVERPLATE</td></tr> <tr><td></td><td>SPECIAL PURPOSE RECEPTACLE, NEMA CONFIGURATION AS NOTED</td></tr> <tr><td></td><td>DUPLEX RECEPTACLE, CEILING MOUNTED</td></tr> <tr><td></td><td>TWO DUPLEX RECEPTACLES (QUAD) WITH COMMON COVERPLATE, CEILING MOUNTED</td></tr> <tr><td></td><td>SPECIAL PURPOSE RECEPTACLE, CEILING MOUNTED, NEMA CONFIGURATION AS NOTED</td></tr> <tr><td></td><td>MOTORIZED LOUVER</td></tr> <tr><td></td><td>GROUND</td></tr> <tr><td></td><td>GROUND BUS BAR, COPPER</td></tr> <tr><td></td><td>SURGE PROTECTION DEVICE</td></tr> <tr><td></td><td>HYDROGEN DETECTOR</td></tr> <tr><td></td><td>ELECTRIC WALL HEATER, SURFACE MOUNTED</td></tr> <tr><td></td><td>VENT FAN, WALL MOUNTED</td></tr> </tbody> </table>	SYMBOL	DESCRIPTION		SINGLE POLE SWITCH		3-WAY SWITCH		4-WAY SWITCH		DIMMER SWITCH		DOUBLE POLE SINGLE THROW SWITCH		DOUBLE POLE DOUBLE THROW SWITCH		KEYED SWITCH		OCCUPANCY SENSOR SWITCH		TIMED SWITCH		SIMPLEX RECEPTACLE		DUPLEX RECEPTACLE		TWO DUPLEX RECEPTACLES (QUAD) WITH COMMON COVERPLATE		DUPLEX RECEPTACLE WITH TWO USB PORTS		TWO DUPLEX RECEPTACLES (QUAD) WITH TWO USB PORTS & COMMON COVERPLATE		GFCI RECEPTACLE		IN-USE WEATHERPROOF GFCI RECEPTACLE		TWO GFCI DUPLEX RECEPTACLES (QUAD) WITH COMMON COVERPLATE		SPECIAL PURPOSE RECEPTACLE, NEMA CONFIGURATION AS NOTED		DUPLEX RECEPTACLE, CEILING MOUNTED		TWO DUPLEX RECEPTACLES (QUAD) WITH COMMON COVERPLATE, CEILING MOUNTED		SPECIAL PURPOSE RECEPTACLE, CEILING MOUNTED, NEMA CONFIGURATION AS NOTED		MOTORIZED LOUVER		GROUND		GROUND BUS BAR, COPPER		SURGE PROTECTION DEVICE		HYDROGEN DETECTOR		ELECTRIC WALL HEATER, SURFACE MOUNTED		VENT FAN, WALL MOUNTED	<table border="1" style="width: 100%; border-collapse: collapse;"> <thead> <tr> <th>SYMBOL</th> <th>DESCRIPTION</th> </tr> </thead> <tbody> <tr><td></td><td>SMOKE DETECTOR</td></tr> <tr><td></td><td>HEAT DETECTOR</td></tr> <tr><td></td><td>PHOTO-ELECTRIC DETECTOR</td></tr> <tr><td></td><td>RESISTOR</td></tr> <tr><td></td><td>END OF LINE RESISTOR</td></tr> <tr><td></td><td>ABORT SWITCH</td></tr> <tr><td></td><td>MANUAL RELEASE SWITCH</td></tr> <tr><td></td><td>DISCONNECT SWITCH</td></tr> <tr><td></td><td>ALARM BELL</td></tr> <tr><td></td><td>LOW PRESSURE SWITCH</td></tr> <tr><td></td><td>DISCHARGE PRESSURE SWITCH</td></tr> <tr><td></td><td>MANUAL PULL STATION</td></tr> <tr><td></td><td>GAS AGENT DISPERSION NOZZLE</td></tr> <tr><td></td><td>STROBE, WALL MOUNTED</td></tr> <tr><td></td><td>STROBE, CEILING MOUNTED OR VERTICALLY MOUNTED ON EXTERIOR MAST AND/OR JUNCTION BOX</td></tr> <tr><td></td><td>EXTINGUISHING AGENT CYLINDER TANK</td></tr> <tr><td></td><td>FIRE ALARM CONTROL PANEL</td></tr> <tr><td></td><td>COMBINATION AUDIBLE & VISUAL ALARM (STROBE / SPEAKER), WALL MOUNTED</td></tr> <tr><td></td><td>ALARM HORN ONLY</td></tr> </tbody> </table>	SYMBOL	DESCRIPTION		SMOKE DETECTOR		HEAT DETECTOR		PHOTO-ELECTRIC DETECTOR		RESISTOR		END OF LINE RESISTOR		ABORT SWITCH		MANUAL RELEASE SWITCH		DISCONNECT SWITCH		ALARM BELL		LOW PRESSURE SWITCH		DISCHARGE PRESSURE SWITCH		MANUAL PULL STATION		GAS AGENT DISPERSION NOZZLE		STROBE, WALL MOUNTED		STROBE, CEILING MOUNTED OR VERTICALLY MOUNTED ON EXTERIOR MAST AND/OR JUNCTION BOX		EXTINGUISHING AGENT CYLINDER TANK		FIRE ALARM CONTROL PANEL		COMBINATION AUDIBLE & VISUAL ALARM (STROBE / SPEAKER), WALL MOUNTED		ALARM HORN ONLY	<table border="1" style="width: 100%; border-collapse: collapse;"> <thead> <tr> <th>SYMBOL</th> <th>DESCRIPTION</th> </tr> </thead> <tbody> <tr><td></td><td>LED OR FLUORESCENT FIXTURE, CEILING OR PENDANT MOUNTED</td></tr> <tr><td></td><td>LED OR FLUORESCENT TROFFER LIGHT 2' X 4'</td></tr> <tr><td></td><td>LED OR FLUORESCENT TROFFER LIGHT 2' X 2'</td></tr> <tr><td></td><td>EMERGENCY TWIN-HEAD LIGHT WITH INTEGRAL BATTERY PACK, WALL MOUNTED</td></tr> <tr><td></td><td>EXIT LIGHT, WALL MOUNTED (BLACK ARROW POINTS IN THE DIRECTION OF EGRESS)</td></tr> <tr><td></td><td>VAPOR-TIGHT WALL SCONCE (JELLY JAR) FIXTURE WITH LED A-19 BULB</td></tr> <tr><td></td><td>EXTERIOR WALL LIGHT (WALLPACK, SCONCE, FLOOD)</td></tr> </tbody> </table> <table border="1" style="width: 100%; border-collapse: collapse;"> <thead> <tr> <th colspan="2" style="text-align: center;">ACCESS CONTROL / SECURITY</th> </tr> </thead> <tbody> <tr><td></td><td>ACCESS CONTROL SYSTEM PANEL</td></tr> <tr><td></td><td>PREPARATION FOR FUTURE CARD READER</td></tr> <tr><td></td><td>KEY PAD</td></tr> <tr><td></td><td>COMBINATION KEY PAD & CARD READER</td></tr> <tr><td></td><td>DOOR POSITION SWITCH (DOOR CONTACT OR LIMIT SWITCH)</td></tr> <tr><td></td><td>ELECTRIC STRIKE</td></tr> <tr><td></td><td>MAGNETIC LOCK</td></tr> <tr><td></td><td>REMOTE DOOR RELEASE BUTTON</td></tr> </tbody> </table>	SYMBOL	DESCRIPTION		LED OR FLUORESCENT FIXTURE, CEILING OR PENDANT MOUNTED		LED OR FLUORESCENT TROFFER LIGHT 2' X 4'		LED OR FLUORESCENT TROFFER LIGHT 2' X 2'		EMERGENCY TWIN-HEAD LIGHT WITH INTEGRAL BATTERY PACK, WALL MOUNTED		EXIT LIGHT, WALL MOUNTED (BLACK ARROW POINTS IN THE DIRECTION OF EGRESS)		VAPOR-TIGHT WALL SCONCE (JELLY JAR) FIXTURE WITH LED A-19 BULB		EXTERIOR WALL LIGHT (WALLPACK, SCONCE, FLOOD)	ACCESS CONTROL / SECURITY			ACCESS CONTROL SYSTEM PANEL		PREPARATION FOR FUTURE CARD READER		KEY PAD		COMBINATION KEY PAD & CARD READER		DOOR POSITION SWITCH (DOOR CONTACT OR LIMIT SWITCH)		ELECTRIC STRIKE		MAGNETIC LOCK		REMOTE DOOR RELEASE BUTTON
SYMBOL	DESCRIPTION																																																																																																																																							
	SINGLE POLE SWITCH																																																																																																																																							
	3-WAY SWITCH																																																																																																																																							
	4-WAY SWITCH																																																																																																																																							
	DIMMER SWITCH																																																																																																																																							
	DOUBLE POLE SINGLE THROW SWITCH																																																																																																																																							
	DOUBLE POLE DOUBLE THROW SWITCH																																																																																																																																							
	KEYED SWITCH																																																																																																																																							
	OCCUPANCY SENSOR SWITCH																																																																																																																																							
	TIMED SWITCH																																																																																																																																							
	SIMPLEX RECEPTACLE																																																																																																																																							
	DUPLEX RECEPTACLE																																																																																																																																							
	TWO DUPLEX RECEPTACLES (QUAD) WITH COMMON COVERPLATE																																																																																																																																							
	DUPLEX RECEPTACLE WITH TWO USB PORTS																																																																																																																																							
	TWO DUPLEX RECEPTACLES (QUAD) WITH TWO USB PORTS & COMMON COVERPLATE																																																																																																																																							
	GFCI RECEPTACLE																																																																																																																																							
	IN-USE WEATHERPROOF GFCI RECEPTACLE																																																																																																																																							
	TWO GFCI DUPLEX RECEPTACLES (QUAD) WITH COMMON COVERPLATE																																																																																																																																							
	SPECIAL PURPOSE RECEPTACLE, NEMA CONFIGURATION AS NOTED																																																																																																																																							
	DUPLEX RECEPTACLE, CEILING MOUNTED																																																																																																																																							
	TWO DUPLEX RECEPTACLES (QUAD) WITH COMMON COVERPLATE, CEILING MOUNTED																																																																																																																																							
	SPECIAL PURPOSE RECEPTACLE, CEILING MOUNTED, NEMA CONFIGURATION AS NOTED																																																																																																																																							
	MOTORIZED LOUVER																																																																																																																																							
	GROUND																																																																																																																																							
	GROUND BUS BAR, COPPER																																																																																																																																							
	SURGE PROTECTION DEVICE																																																																																																																																							
	HYDROGEN DETECTOR																																																																																																																																							
	ELECTRIC WALL HEATER, SURFACE MOUNTED																																																																																																																																							
	VENT FAN, WALL MOUNTED																																																																																																																																							
SYMBOL	DESCRIPTION																																																																																																																																							
	SMOKE DETECTOR																																																																																																																																							
	HEAT DETECTOR																																																																																																																																							
	PHOTO-ELECTRIC DETECTOR																																																																																																																																							
	RESISTOR																																																																																																																																							
	END OF LINE RESISTOR																																																																																																																																							
	ABORT SWITCH																																																																																																																																							
	MANUAL RELEASE SWITCH																																																																																																																																							
	DISCONNECT SWITCH																																																																																																																																							
	ALARM BELL																																																																																																																																							
	LOW PRESSURE SWITCH																																																																																																																																							
	DISCHARGE PRESSURE SWITCH																																																																																																																																							
	MANUAL PULL STATION																																																																																																																																							
	GAS AGENT DISPERSION NOZZLE																																																																																																																																							
	STROBE, WALL MOUNTED																																																																																																																																							
	STROBE, CEILING MOUNTED OR VERTICALLY MOUNTED ON EXTERIOR MAST AND/OR JUNCTION BOX																																																																																																																																							
	EXTINGUISHING AGENT CYLINDER TANK																																																																																																																																							
	FIRE ALARM CONTROL PANEL																																																																																																																																							
	COMBINATION AUDIBLE & VISUAL ALARM (STROBE / SPEAKER), WALL MOUNTED																																																																																																																																							
	ALARM HORN ONLY																																																																																																																																							
SYMBOL	DESCRIPTION																																																																																																																																							
	LED OR FLUORESCENT FIXTURE, CEILING OR PENDANT MOUNTED																																																																																																																																							
	LED OR FLUORESCENT TROFFER LIGHT 2' X 4'																																																																																																																																							
	LED OR FLUORESCENT TROFFER LIGHT 2' X 2'																																																																																																																																							
	EMERGENCY TWIN-HEAD LIGHT WITH INTEGRAL BATTERY PACK, WALL MOUNTED																																																																																																																																							
	EXIT LIGHT, WALL MOUNTED (BLACK ARROW POINTS IN THE DIRECTION OF EGRESS)																																																																																																																																							
	VAPOR-TIGHT WALL SCONCE (JELLY JAR) FIXTURE WITH LED A-19 BULB																																																																																																																																							
	EXTERIOR WALL LIGHT (WALLPACK, SCONCE, FLOOD)																																																																																																																																							
ACCESS CONTROL / SECURITY																																																																																																																																								
	ACCESS CONTROL SYSTEM PANEL																																																																																																																																							
	PREPARATION FOR FUTURE CARD READER																																																																																																																																							
	KEY PAD																																																																																																																																							
	COMBINATION KEY PAD & CARD READER																																																																																																																																							
	DOOR POSITION SWITCH (DOOR CONTACT OR LIMIT SWITCH)																																																																																																																																							
	ELECTRIC STRIKE																																																																																																																																							
	MAGNETIC LOCK																																																																																																																																							
	REMOTE DOOR RELEASE BUTTON																																																																																																																																							

NOTE: SOME SYMBOLS AND/OR ABBREVIATIONS SHOWN ON THIS LEGEND MAY NOT PERTAIN TO THIS PROJECT

REV. NO.	DESCRIPTION	DATE	DWN BY
1090 Industrial Blvd. Bessemer, AL 35022 Ph# 205-980-4565 F# 877-675-5551 Email: info@modularconnections.com		DATE	JOB NO.
TITLE		11/7/23	MCP1537 - MC5341
DRAWING NO.		DRAWN BY	SHEET
D22246		OS	E0.3
SCALE		CHECKED BY	
PER DRAWING		WHS	

PRELIMINARY — SUBJECT TO OWNER REVIEW

1/24/2024 8:11:17 AM C:\Revit\MC5341_CNTRL_S_v06.02_usulivanM7ESW.rvt

FINISH & COLOR SCHEDULE

NAME	EXT. WALLS	EXT. TRIM	EXT. DOORS	INT. WALL & CEILING	INT. DOOR(S)	FLOOR	ROOF
RESTROOM	STANDARD BASF COATING OVER BROOM FINISH	TBD	TBD	LATEX PAINT OVER SMOOTH FINISHED CONCRETE	MINDFUL GRAY	REXTHANE PAINTED GRAY WITH ANTI-SKID	RUBBER MEMBRANE ROOF SEAL

PIPE PICK LIST

QTY. OF 10' PIECES	SIZE	TYPE
0.7	1"ø	CU TYPE L
0.1	1/2"ø	CU TYPE L
0.7	1 1/4"ø	PVC DWV
1.2	2"ø	PVC DWV
0.0	3"ø	PVC DWV
0.1	4"ø	PVC DWV

CONDUIT

QTY. OF 10' LENGTHS	PART#	SIZE	DESCRIPTION	TOTAL LENGTH
2.4	ES1236	1/2"ø	CONDUIT, 1/2"ø EMT X 10' LENGTH	23' - 11"
0.0	ES1159	3/4"ø	CONDUIT, 3/4"ø EMT X 10' LENGTH	0' - 5"

PACK IN SHELTER

QTY.	PART#	MODEL	DESCRIPTION
16	820053	378084	ANCHOR, 1/2"-13 X 4-1/2" WEDGE ANCHOR STUD HDG HILT
12	82000014	82000014	BEARING PAD, 1/4" X 4" X 4"
6	82000016	82000016	BEARING PAD, 1/16" X 4" X 4"
12	82000018	82000018	BEARING PAD, 1/8" X 4" X 4"
12	ES4312	ES4312	BEARING PAD, 1/4" X 4" X 4" NEOPRENE
8	ES24558	ES24558	LATERAL SLIDE PLATE, HDG

ADDITIONAL PACK IN SHELTER

QTY.	PART#	MODEL#	DESCRIPTION
1pt.			DOOR PAINT - SEE FINISH & COLOR SCHEDULE
1qt.			EXTERIOR TRIM PAINT - SEE FINISH & COLOR SCHEDULE
2qt.			FLOOR PAINT
6	580032A	580032A	CAULK, URETHANE NP-1 ALUM GRAY
4	820047	#5	BUTYL ROPE SEAL, 3/4" X 10'
96	220480	TNT25114H	SCREW, 1/4" X 1-1/4" HEX SLOT TAPCON
96			WASHER, 1/4" BONDED

REV NO.	DESCRIPTION	DATE	DWN BY
 MODULAR CONNECTIONS, LLC All Rights Reserved		1090 Industrial Blvd. Bessemer, AL 35022 Ph# 205-980-4565 F# 877-675-5551 Email: info@modularconnections.com	JOB NO. MCP1537 - MC5341
TITLE PICK LISTS AND CUT SCHEDULES		DATE 11/7/23	DRAWN BY OS
SCALE PER DRAWING		DRAWING NO. D22246	SHEET E0.4

PRELIMINARY SUBJECT TO OWNER REVIEW

1/24/2024 8:11:18 AM C:\Revit\MCS41_CNTL_S_v06.02_osullivan\MTE5W.rvt

NOTICE: These drawings and specifications are the property of Modular Connections, LLC. All information contained herein which is not known generally in the field of Modular Connections, LLC shall be confidential except to any extent to which it is established to have been known previously from sources other than Modular Connections, LLC. These drawings and specifications may not be reproduced, copied or used as the basis for the manufacture or sale of apparatus without written permission.

EQUIPMENT LIST SCH. - ALL

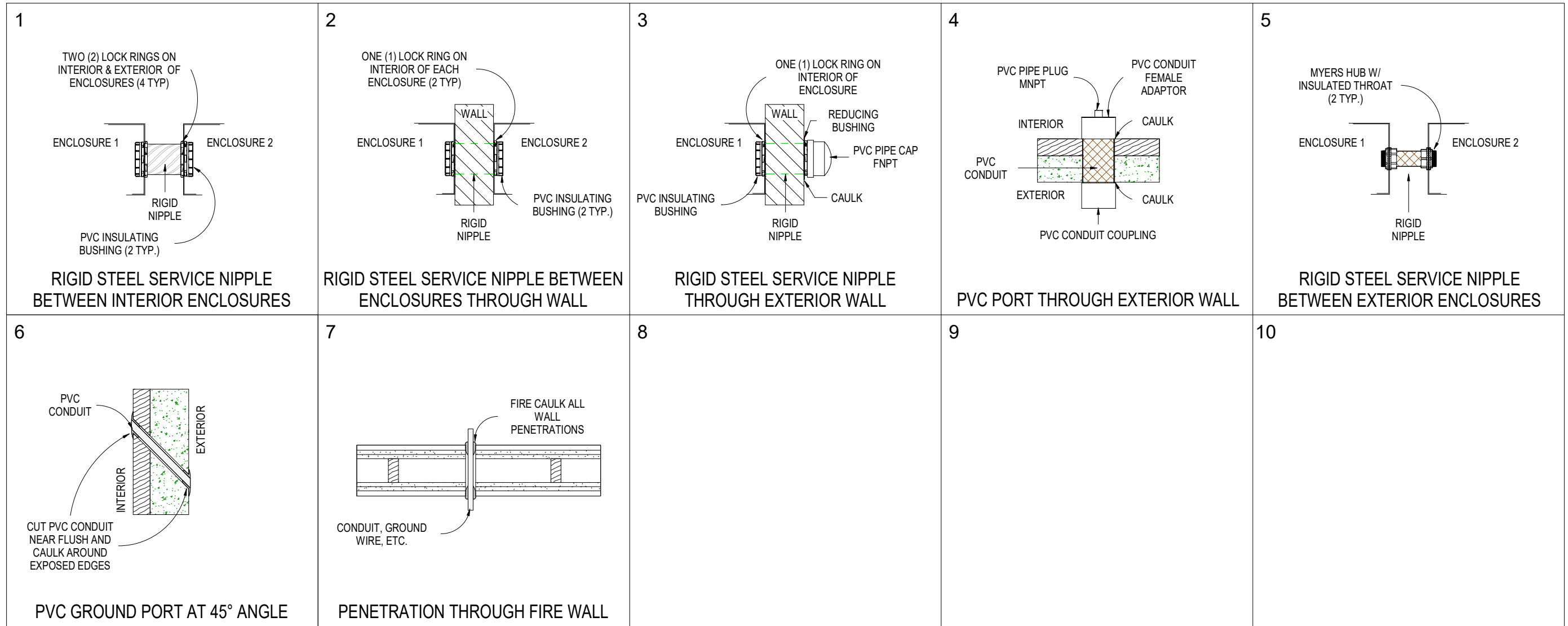
ITEM #	QTY.	PART#	MODEL#	DESCRIPTION
R	4	820066	820066	10-TON LIFTING PLATE HDG
1	1	ES17400	1250XL-A	WATER HAMMER ARRESTOR, 1/2" MNPT
2	2	ES20987	SEAL4-50N/D10	LIGHT, 4' LED 50W WASHDOWN SURFACE MNT 4000K LED 120/277 WHITE
3	1	ES18939	UW-100-24-W	OCCUPANCY SENSOR, 18-24VDC 24VAC SPDT WHITE
4	1	ES3828UH		DOOR, 3070 18GA GALV UH MORTISE PREP CLSER RNFRCD URETHANE CORE PRIME PAINTED CECO VERSADOOR
5	10	ES11166DM	904	DOOR MUTE, RUBBER SILENCER BUMPER PRESS IN FIT
6	1	ES19668	DC610A	DRIP CAP, 40" X 1-1/2" X 2-1/2" W/ .250" MNTNG HOLE FOR 36" W DOOR
7	2	ES3827		DOOR FRAME, 3070 LHR 16GA GALV 4" DEPTH SNGL RBBT MSNRY 4-1/2" SW HINGE (3) 4-7/8" ANSI STRIKE CLSR RNFRCD CECO LCTNS NO ANCHORS WELDED PRIME PAINTED
8	2	ES14426	7100-BC-DSHO-689	DOOR CLOSER, PDQ HEAVY DUTY PARALLEL STOP / THMB TRN HOLD OPEN
9	1	ES3828UHMB		DOOR, 3070 18GA GALV UH MORTISE RNFRCMNT BLANK FACES W/ EDGE CUT OUT CLSER RNFRCD URETHANE CORE PRIME PNTD CECO VERSADOOR
10	1	ES25458	RVF4	FAN, EXHAUST EXTERIOR 124 CFM 4" DUCT EXT MNTD 115V W/ HOOD
11	1	ES18365	MR 260 PJSJ 630/US32D	LOCKSET, MORTISE PDQ MR 260 PJSJ 630/US32D LEFT HAND & SFIC 6 PIN CYLINDER LESS CORE 260 FACULTY RESTROOM W/ DEADBOLT & INDICATOR ***USE LMO PREP DOOR*** OCCUPIED VACANT
12	2	ES20346	26D	LOCKSET, CORE SFIC 7 PIN H KEYWAY BITTED TO A1 OPERATOR & CONTROL ON FILE (7PIN)
13	1	ES11019	MR 136 PFEF 626	LOCKSET, MORTISE PDQ LHR SF7L 7 PIN CYLINDER LESS CORE 136 CORRIDOR ANSI F13
14	1	ES19508		DOOR LOUVER, 12" X 12" NON-VISION INVERTED "Y" 18 GA FRAME 20 GA BLADES GRAY PWDR COAT AIR LOUVERS # 800A1 1212G
15	1	ES21026	H30522T2DWB	HEATER, 2.25 KW 240V WALL MNT SURFACE/RECESSED
16	1	ES21083	3UF66	HEATER, MOUNTING FRAME BROWN 4" DEPTH MARKEL # 305EX32 FOR H30522T2DWB HEATER
17	1	ES3618	QOC24US	LOAD CENTER, COVER QOC24US SQ-D
18	2	ES191	5362I	RECEPTACLE, 20A 120V DPLX IVORY (STD)
19	1	ES17170	6RGG5	GRAB BAR, 18" X 1-1/2" DIA SATIN (SMOOTH) SS CNCLD SNAP ON FLNG JNS STHNS # G13-118 FERG GB18SF2 GRNGR # 6RGG5
20	1	ES22463	54ZU84	SOAP DISPENSER, 40 OZ (1.2L)
21	1	ES16897	M5300-1836	MIRROR, 18" X 36"
22	1	ES6686	TP-2	TOILET PAPER DISPENSER, 2 ROLL STAINLESS HARDENED ROYCE ROLLS TP-2
23	1	ES6686C	TP-CLIP	TOILET PAPER DISPENSER, RETAINING CLIP ROYCE ROLLS
24	1	ES17788	12-314	LAVATORY, CHINA WALL MTD 19"W X 10.5"H X 17"D 4" CENTERS WHITE
25	1	ES16456	#Z6000-WS1-YB-YC	VALVE, FLUSH TOILET 1.6 GPF ADA ZURN W/ SWEAT SOLDER KIT
26	1	ES13834	Z86300-XL	FAUCET, ZURN PUSH BUTTON
27	1	ES9005	4JG66	COAT HOOK, SILVER FINISH WALL MNT
28	1	ES22146	QO124M100P	LOAD CENTER, 100A 120/240 1PH 24P MB QO124M100P SQ-D
29	1	ES15684	8122-001420	GRAB BAR, 42" X 1-1/2" DIA SAFETY GRIP CONCEALED FLNG SS BRADLEY 8122-001420 GRNGR # 33MP46
30	2	ES25230	WGH2-LSCS	LIGHT, 30-70W LED WALLPACK 12/277 4-5000K SWTCHBLE W/PHTCLL DRK BRNZE MEDIUM HBBLL # WGH2-LSCS
31	1	ES19668	DC610A	DRIP CAP, 40" X 1-1/2" X 2-1/2" W/ .250" MNTNG HOLE FOR 36" W DOOR
32	1	ES22189	K-84325-0	TOILET, CHINA WHITE WALL MNT KOHLER K-84325-0 1-1/2" TOP SPUD KINGSTON ULTRA
33	1	ES190	1221I	SWITCH, 20A 120-277V SPST TGGL IVORY
34	1	ES12359	GR100	FAN, GRILLE 4" ROUND PLASTIC ADJUSTBL
35	4	ES11710		NIPPLE, 1/2" X 6" RIGID GALV CONDUIT TBE
36	16	ES971	L-100	LOCKNUT, 1/2" CONDUIT STEEL STMPD ZP
37	8	ES196	BU-501	BUSHING, 1/2" PLASTIC INSULATING ABB #
40	1	ES17175	46W155	TOILET, SEAT ENLNGTD BOWL OPN FRNT PLASTIC WHITE CHECK HNGE SELF-SUSTAINING NO LID BEMIS # 1955SCT GRNGR # 46W155
41	1	ES17169	8122-001360	GRAB BAR, 36" X 1-1/2" DIA SATIN (SMOOTH) SS CNCLD SNAP ON FLNG JNS STHNS # G13-136 FERG GB36SF2 GRNGR # 6RGG7
42	1	ES11629	SP2412	WATER HEATER, TANKLESS 2.4 KW 120VAC EEMAX # SP2412
43	1	ES1179	PK15GTA	GROUND BAR KIT, PK15GTA LOAD CENTER SQ-D
44	1	ES21233	B-102-012	FLOOR DRAIN, 2" INTERGAL TRAP CAST IRON W/ 4-1/2" CHR M PLATED BRSS STRNR
45	1	ES21309	205F04LF	BOILER DRAIN, 3/4" MPT BRASS LEAD FREE ANGLE SPOUT
46	1	ES25770	58204	PAPER TOWEL, DISPENSER CENTERPULL
47	16	ES20336		WINDOW, GLASS BLOCK 16"H X 32"W FEDERAL CUBIT USING 8" X 8" WECK ESSEX #340 GLASS BLOCK DRW 091517SC.1 R1

PRELIMINARY SUBJECT TO OWNER REVIEW

REV NO.	DESCRIPTION	DATE	DWN BY
 MODULAR CONNECTIONS, LLC All Rights Reserved		1090 Industrial Blvd. Bessemer, AL 35022 Ph# 205-980-4565 F# 877-675-5551 Email: info@modularconnections.com	DATE 11/7/23
TITLE EQUIPMENT LIST		DRAWING NO. D22246	JOB NO. MCP1537 - MC5341
SCALE PER DRAWING		DRAWN BY OS	SHEET E0.5
		CHECKED BY WHS	

1/24/2024 8:11:19 AM C:\Revit\MC5341_CENTL_S_v06.02_usul\vanM7E5W.rvt

NOTICE: These drawings and specifications are the property of Modular Connections, LLC. All information contained herein which is not known generally in the field of Modular Connections, LLC shall be confidential except to any extent to which it is established to have been known previously from sources other than Modular Connections, LLC. These drawings and specifications may not be reproduced, copied or used as the basis for the manufacture or sale of apparatus without written permission.

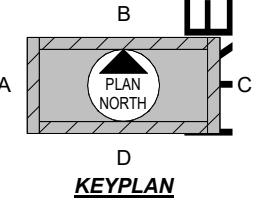
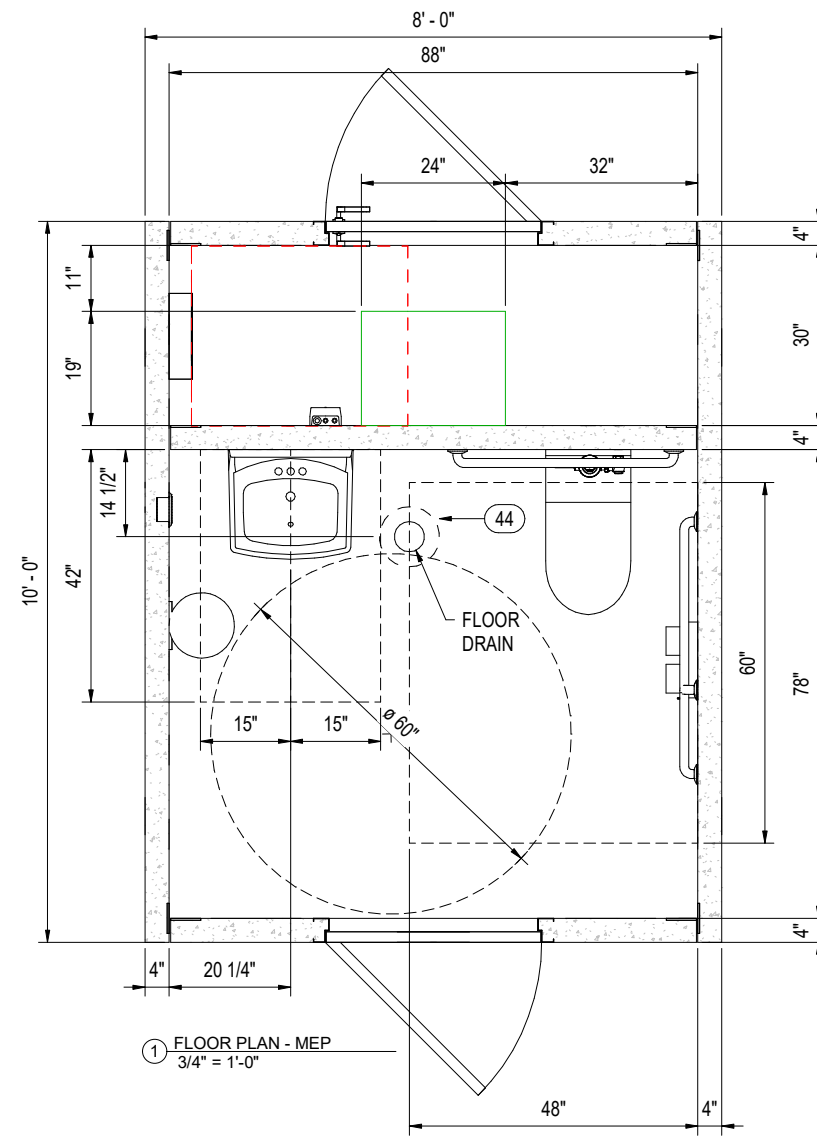


1/24/2024 8:11:20 AM C:\Revit\MCS341_CENTL_S_v06.02_usulfanM7E5W.rvt

REV NO.	DESCRIPTION	DATE	DWN BY
1090 Industrial Blvd. Bessemer, AL 35022 Ph# 205-980-4565 F# 877-675-5551 Email: info@modularconnections.com		11/7/23	MCP1537 - MC5341
TITLE		DRAWING NO.	DRAWN BY
- 10' x 8' x 8'-0" IH		D22246	OS
WALL & ENCLOSURE PENETRATION DETAILS		SCALE	CHECKED BY
PER DRAWING		PER DRAWING	WHS
			SHEET
			E0.6

NOTICE: These drawings and specifications are the property of Modular Connections, LLC. All information contained herein which is not known generally in the field of Modular Connections, LLC shall be confidential except to any extent to which it is established to have been known previously from sources other than Modular Connections, LLC. These drawings and specifications may not be reproduced, copied or used as the basis for the manufacture or sale of apparatus without written permission.

1/24/2024 8:11:21 AM
 C:\Revit\MCS341_CRTL_S_v06.02_osullivan\MTE5W.rvt

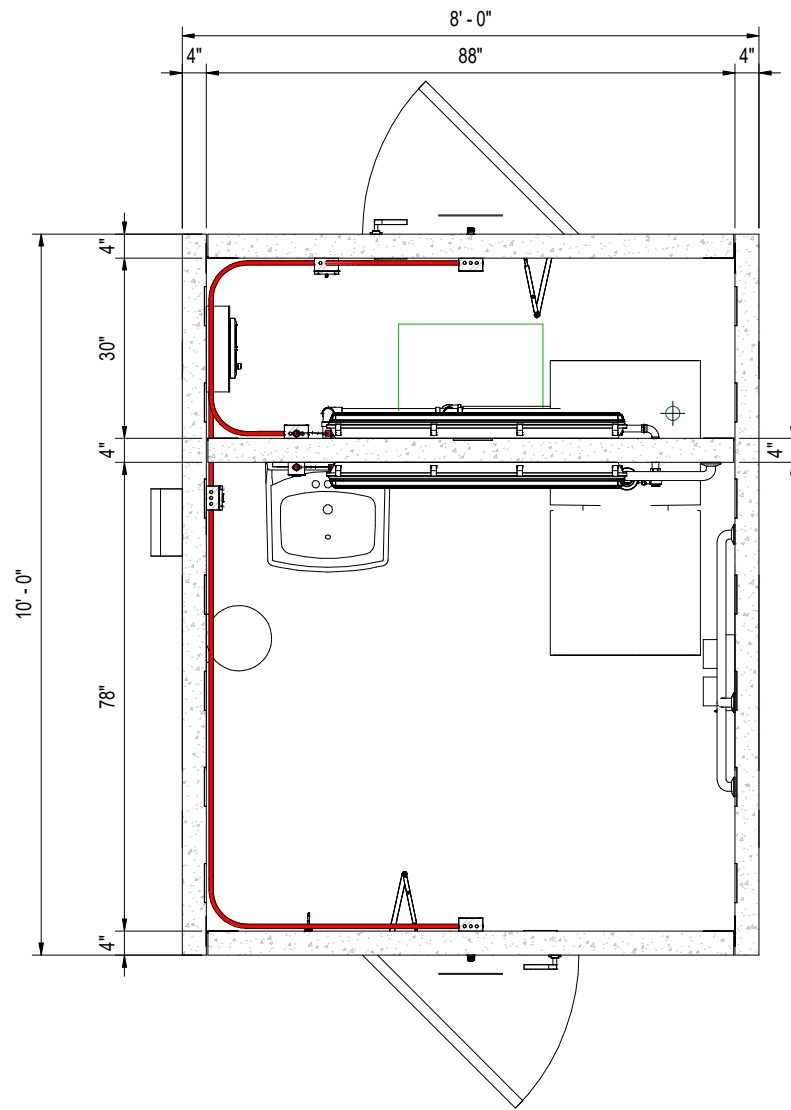


SUBJECT TO OWNER REVIEW

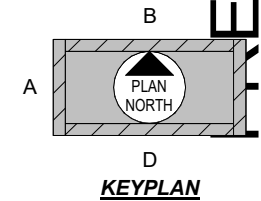
PRELIMINARY

REV NO.	DESCRIPTION	DATE	DWN BY
	MODULAR CONNECTIONS 1090 Industrial Blvd. Bessemer, AL 35022 Ph# 205-980-4565 F# 877-675-5551 Email: info@modularconnections.com	11/7/23	
FLOOR PLAN (ELECTRICAL) 10' x 8' x 8'-0" IH		DRAWING NO. D22246 SCALE PER DRAWING	JOB NO. MCP1537 - MC5341 DRAWN BY OS CHECKED BY WHS SHEET E2.0

1/24/2024 8:11:22 AM
 C:\Revit\MCS341_CNTRL_S_v06.02_usullivan\MTESW.rvt



① PLAN VIEW - COORDINATION
 3/4" = 1'-0"



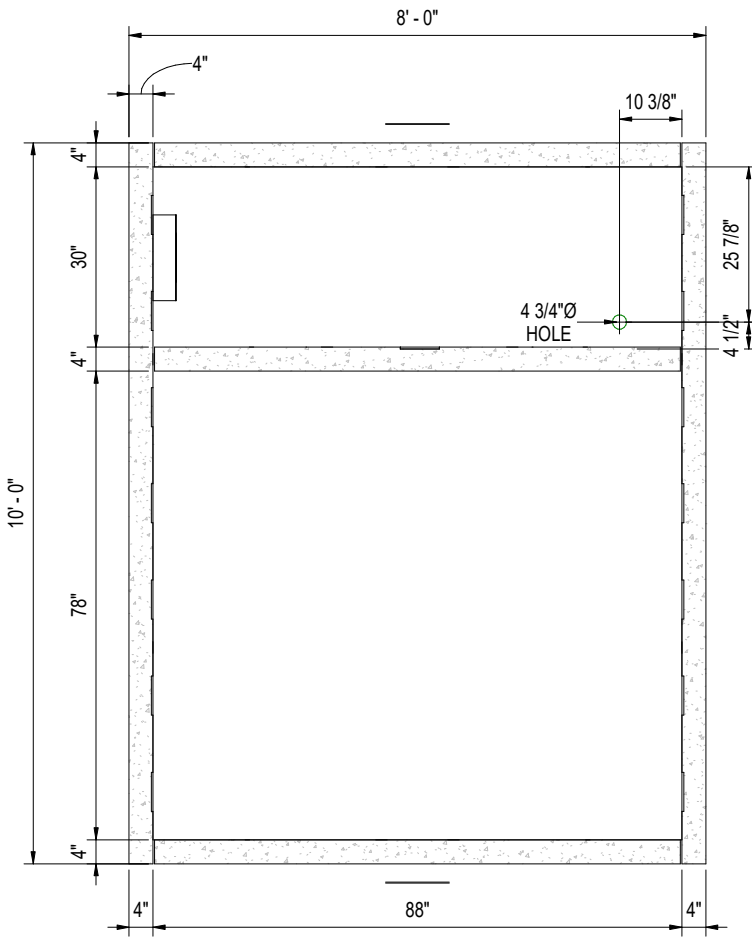
SUBJECT TO OWNER REVIEW

PRELIMINARY

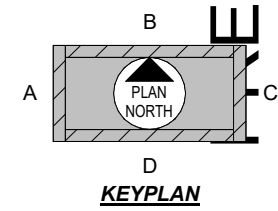
REV NO.	DESCRIPTION	DATE	DWN BY
	MODULAR CONNECTIONS MODULAR CONNECTIONS, LLC 1090 Industrial Blvd. Bessemer, AL 35022 Ph# 205-980-4565 F# 877-675-5551 Email: info@modularconnections.com	11/7/23	
TITLE: 10' x 8' x 8'-0" IH PLAN VIEW (COORDINATION)		DRAWING NO. D22246 SCALE PER DRAWING	JOB NO. MCP1537 - MC5341 DRAWN BY OS CHECKED BY WHS SHEET E3.0

SUBJECT TO OWNER REVIEW

PRELIMINARY

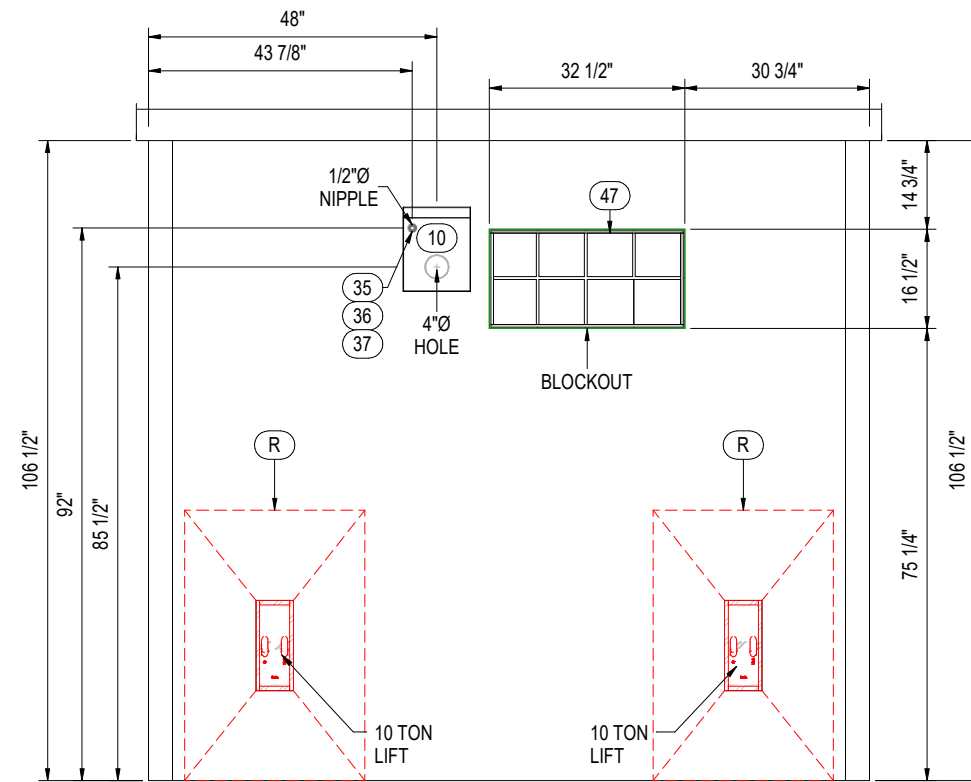


① REFLECTED CEILING (POWER & LIGHTING)
3/4" = 1'-0"



REV NO.	DESCRIPTION	DATE	DATE	DWN BY
	MODULAR CONNECTIONS, LLC 1090 Industrial Blvd. Bessemer, AL 35022 Ph# 205-980-4565 F# 877-675-5551 Email: info@modularconnections.com	11/7/23		
TITLE		DRAWING NO.	DRAWN BY	JOB NO.
RCP (POWER & LIGHTING)		D22246	OS	MCP1537 - MC5341
		SCALE	CHECKED BY	SHEET
		PER DRAWING	WHS	E3.1

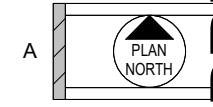
1/24/2024 8:11:23 AM
C:\Revit\MCS341_CENTL_S_v06.02_osullivan\MTE5W.rvt



① PANEL A ELEVATION - MEP - EXTERIOR
3/4" = 1'-0"

EQUIPMENT LIST (BY SHEET)

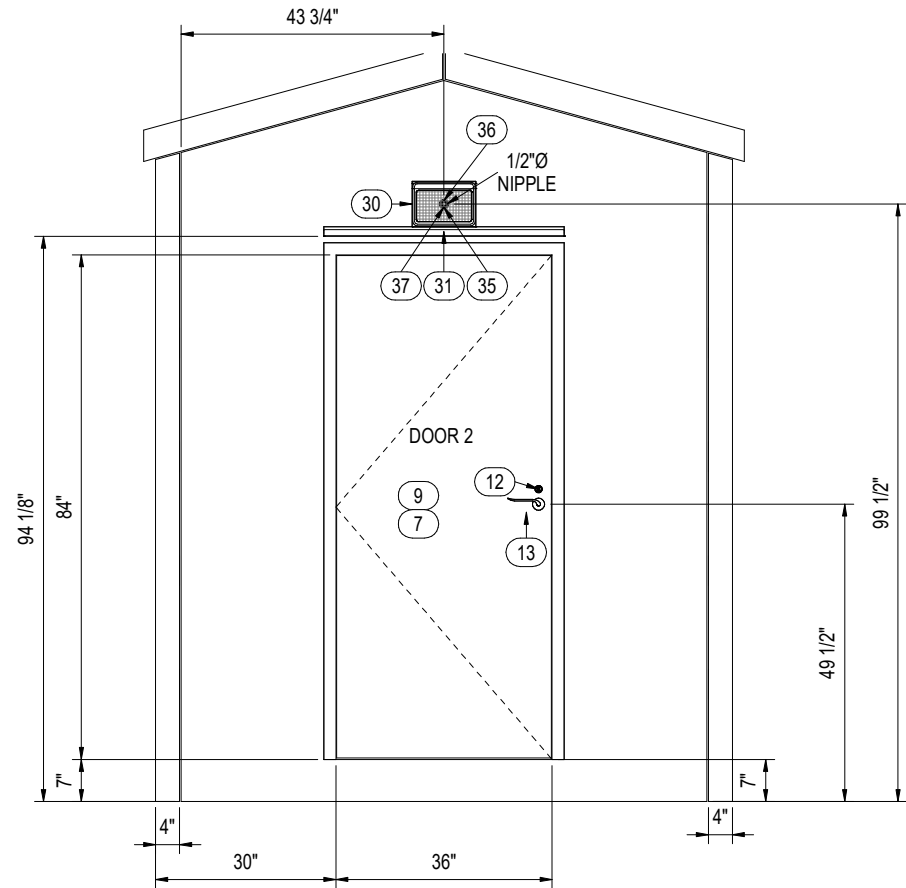
ITEM #	QTY.	PART #	MODEL #	DESCRIPTION
R	2	820066	820066	10-TON LIFTING PLATE HDG
10	1	ES25458	RVF4	FAN, EXHAUST EXTERIOR 124 CFM 4" DUCT EXT MNTD 115V W/ HOOD
35	1	ES11710		NIPPLE, 1/2" X 6" RIGID GALV CONDUIT TBE
36	2	ES971	L-100	LOCKNUT, 1/2" CONDUIT STEEL STMPD ZP
37	1	ES196	BU-501	BUSHING, 1/2" PLASTIC INSULATING ABB #
47	8	ES20336		WINDOW, GLASS BLOCK 16"H X 32"W FEDERAL CUBIT USING 8" X 8" WECK ESSEX #340 GLASS BLOCK DRW 091517SC.1 R1



KEYPLAN

REV NO.	DESCRIPTION	DATE	DWN BY
MODULAR CONNECTIONS <small>MODULAR CONNECTIONS, LLC 1090 Industrial Blvd. Bessemer, AL 35022 Ph# 205-980-4565 F# 877-675-5551 Email: info@modularconnections.com</small>		DATE 11/7/23	JOB NO. MCP1537 - MC5341
TITLE ENDWALL PANEL A (EXTERIOR)		DRAWING NO. D22246 SCALE PER DRAWING	DRAWN BY OS CHECKED BY WHS SHEET E4.1

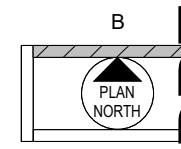
1/24/2024 8:11:23 AM C:\Revit\MCP5341_CENTL_S_v06.02_osullivan\MTE5W.rvt



① PANEL B ELEVATION - MEP - EXTERIOR
3/4" = 1'-0"

EQUIPMENT LIST (BY SHEET)

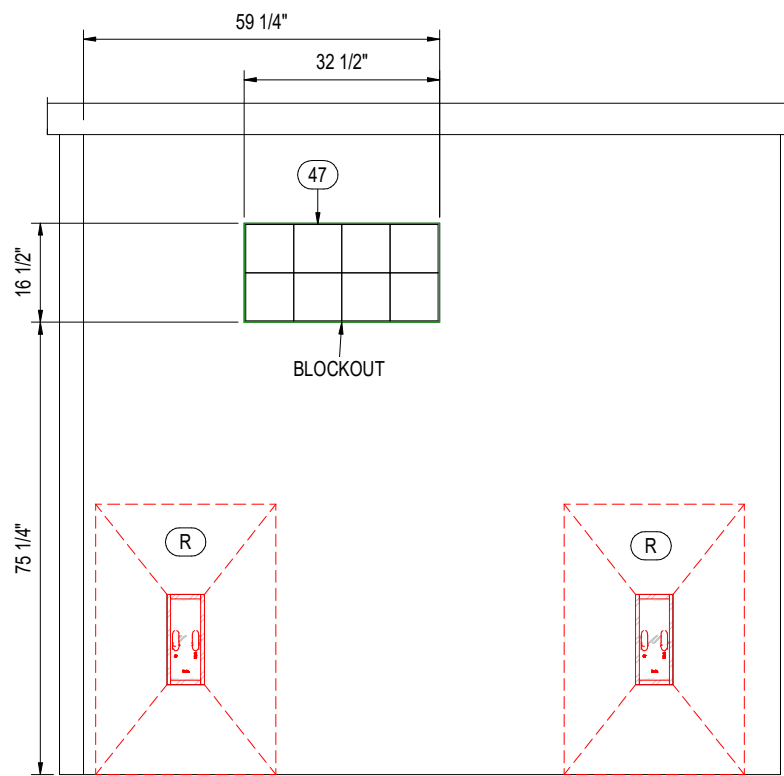
ITEM #	QTY.	PART #	MODEL #	DESCRIPTION
7	1	ES3827		DOOR FRAME, 3070 LHR 16GA GALV 4" DEPTH SNGL RBBT MSNRY 4-1/2" SW HINGE (3) 4-7/8" ANSI STRIKE CLSR RNFRCD CECO LCTNS NO ANCHORS WELDED PRIME PAINTED
9	1	ES3828UH MB		DOOR, 3070 18GA GALV UH MORTISE RNFRCMNT BLANK FACES W/ EDGE CUT OUT CLSR RNFRCD URETHANE CORE PRIME PNTD CECO VERSADOOR
12	1	ES20346	26D	LOCKSET, CORE SFIC 7 PIN H KEYWAY BITTED TO A1 OPERATOR & CONTROL ON FILE (7PIN)
13	1	ES11019	MR 136 PFEF 626	LOCKSET, MORTISE PDQ LHR SF7L 7 PIN CYLINDER LESS CORE 136 CORRIDOR ANSI F13
30	1	ES25230	WGH2-LSC S	LIGHT, 30-70W LED WALLPACK 12/277 4-5000K SWTCHBLE W/PHTCLL DRK BRNZE MEDIUM HBBLL # WGH2-LSCS
31	1	ES19668	DC610A	DRIP CAP, 40" X 1-1/2" X 2-1/2" W/ .250" MNTNG HOLE FOR 36" W DOOR
35	1	ES11710		NIPPLE, 1/2" X 6" RIGID GALV CONDUIT TBE
36	2	ES971	L-100	LOCKNUT, 1/2" CONDUIT STEEL STMPD ZP
37	1	ES196	BU-501	BUSHING, 1/2" PLASTIC INSULATING ABB #



KEYPLAN

REV NO.	DESCRIPTION	DATE	DWN BY
		1090 Industrial Blvd. Bessemer, AL 35022 Ph# 205-980-4565 F# 877-675-5551 Email: info@modularconnections.com	DATE: 11/7/23 JOB NO.: MCP1537 - MC5341
TITLE: SIDEWALL PANEL B (EXTERIOR)		DRAWING NO.: D22246 SCALE: PER DRAWING	DRAWN BY: OS CHECKED BY: WHS SHEET: E4.2

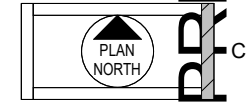
1/24/2024 8:11:24 AM C:\Revit\MCS341_CENTL_S_v06.02_osullivan\MTE5W.rvt



① PANEL C ELEVATION - MEP - EXTERIOR
3/4" = 1'-0"

EQUIPMENT LIST (BY SHEET)

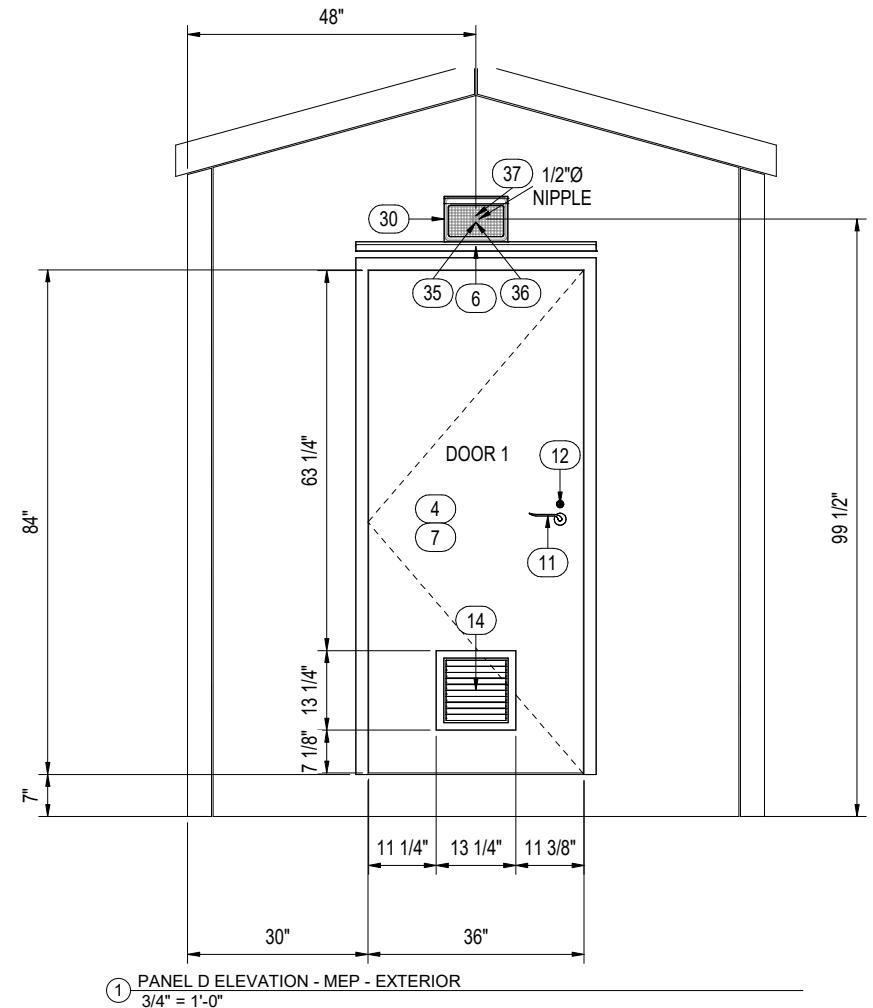
ITEM #	QTY.	PART #	MODEL #	DESCRIPTION
R	2	820066	820066	10-TON LIFTING PLATE HDG
47	8	ES20336		WINDOW, GLASS BLOCK 16"H X 32"W FEDERAL CUBIT USING 8" X 8" WECK ESSEX #340 GLASS BLOCK DRW 091517SC.1 R1



KEYPLAN

REV NO.	DESCRIPTION	DATE	DWN BY
MODULAR CONNECTIONS <small>MODULAR CONNECTIONS, LLC 1090 Industrial Blvd. Bessemer, AL 35022 Ph# 205-980-4565 F# 877-675-5551 Email: info@modularconnections.com</small>		DATE 11/7/23	JOB NO. MCP1537 - MC5341
TITLE ENDWALL PANEL C (EXTERIOR)		DRAWING NO. D22246	DRAWN BY OS
SCALE PER DRAWING		CHECKED BY WHS	SHEET E4.3

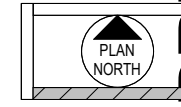
1/24/2024 8:11:25 AM
C:\Revit\MCS41_CENTL_S_v06.02_osullivan\MTE5W.rvt



① PANEL D ELEVATION - MEP - EXTERIOR
3/4" = 1'-0"

EQUIPMENT LIST (BY SHEET)

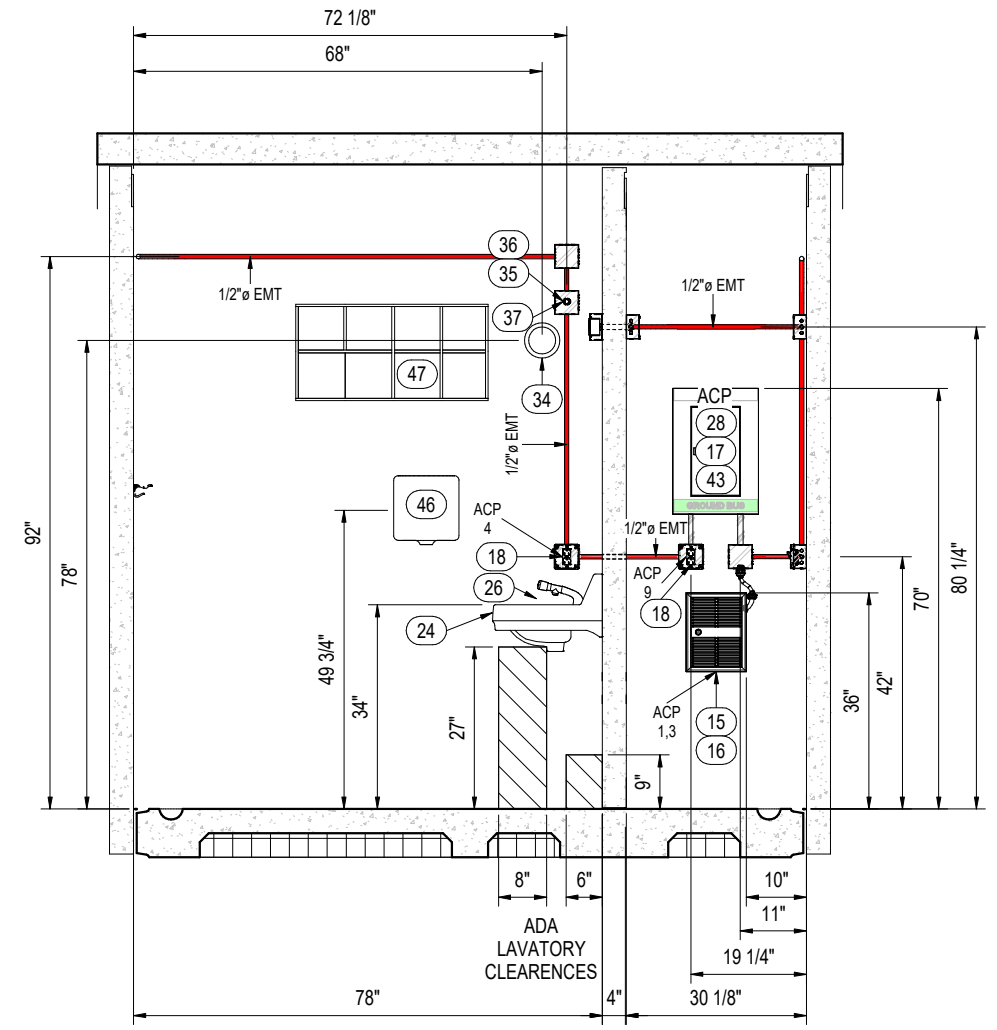
ITEM #	QTY.	PART #	MODEL #	DESCRIPTION
4	1	ES3828UH		DOOR, 3070 18GA GALV UH MORTISE PREP CLSER RNFRCD URETHANE CORE PRIME PAINTED CECO VERSADOOR
6	1	ES19668	DC610A	DRIP CAP, 40" X 1-1/2" X 2-1/2" W/ .250" MNTNG HOLE FOR 36" W DOOR
7	1	ES3827		DOOR FRAME, 3070 LHR 16GA GALV 4" DEPTH SNGL RBBT MSNRY 4-1/2" SW HINGE (3) 4-7/8" ANSI STRIKE CLSR RNFRCD CECO LCTNS NO ANCHORS WELDED PRIME PAINTED
11	1	ES18365	MR 260 PJSJ 630/US32D	LOCKSET, MORTISE PDQ MR 260 PJSJ 630/US32D LEFT HAND & SFIC 6 PIN CYLINDER LESS CORE 260 FACULTY RESTROOM W/ DEADBOLT & INDICATOR ***USE LMO PREP DOOR*** OCCUPIED VACANT
12	1	ES20346	26D	LOCKSET, CORE SFIC 7 PIN H KEYWAY BITTED TO A1 OPERATOR & CONTROL ON FILE (7PIN)
14	1	ES19508		DOOR LOUVER, 12" X 12" NON-VISION INVERTED "Y" 18 GA FRAME 20 GA BLADES GRAY PWDR COAT AIR LOUVERS # 800A1 1212G
30	1	ES25230	WGH2-LSC S	LIGHT, 30-70W LED WALLPACK 12/277 4-5000K SWTCHBLE W/PHTCLL DRK BRNZE MEDIUM HBBLL # WGH2-LSCS
35	1	ES11710		NIPPLE, 1/2" X 6" RIGID GALV CONDUIT TBE
36	2	ES971	L-100	LOCKNUT, 1/2" CONDUIT STEEL STMPD ZP
37	1	ES196	BU-501	BUSHING, 1/2" PLASTIC INSULATING ABB #



D
KEYPLAN

REV NO.	DESCRIPTION	DATE	DWN BY
MODULAR CONNECTIONS, LLC 1090 Industrial Blvd. Bessemer, AL 35022 Ph# 205-980-4565 F# 877-675-5551 Email: info@modularconnections.com		DATE 11/7/23	JOB NO. MCP1537 - MC5341
TITLE SIDEWALL PANEL D (EXTERIOR)		DRAWING NO. D22246	DRAWN BY OS
SCALE PER DRAWING		CHECKED BY WHS	SHEET E4.4

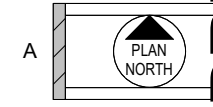
1/24/2024 8:11:25 AM
C:\Revit\MCS341_CENTL_S_v06.02_osullivanMTE5W.rvt



1 PANEL A - LAYOUT (INTERIOR)
3/4" = 1'-0"

EQUIPMENT LIST (BY SHEET)

ITEM #	QTY.	PART #	MODEL #	DESCRIPTION
3	1	ES18939	UW-100-24-W	OCCUPANCY SENSOR, 18-24VDC 24VAC SPDT WHITE
15	1	ES21026	H30522T2-DWB	HEATER, 2.25 KW 240V WALL MNT SURFACE/RECESSED
16	1	ES21083	3UF66	HEATER, MOUNTING FRAME BROWN 4" DEPTH MARKEL # 305EX32 FOR H30522T2DWB HEATER
17	1	ES3618	QOC24US	LOAD CENTER, COVER QOC24US SQ-D
18	2	ES191	5362I	RECEPTACLE, 20A 120V DPLX IVORY (STD)
24	1	ES17788	12-314	LAVATORY, CHINA WALL MTD 19"W X 10.5"H X 17"D 4" CENTERS WHITE
26	1	ES13834	Z86300-XL	FAUCET, ZURN PUSH BUTTON
27	1	ES9005	4JG66	COAT HOOK, SILVER FINISH WALL MNT
28	1	ES22146	QO124M10-0P	LOAD CENTER, 100A 120/240 1PH 24P MB QO124M100P SQ-D
33	1	ES190	1221I	SWITCH, 20A 120-277V SPST TGGL IVORY
34	1	ES12359	GR100	FAN, GRILLE 4" ROUND PLASTIC ADJUSTBL
35	2	ES11710		NIPPLE, 1/2" X 6" RIGID GALV CONDUIT TBE
36	6	ES971	L-100	LOCKNUT, 1/2" CONDUIT STEEL STMPD ZP
37	3	ES196	BU-501	BUSHING, 1/2" PLASTIC INSULATING ABB #
43	1	ES1179	PK15GTA	GROUND BAR KIT, PK15GTA LOAD CENTER SQ-D
46	1	ES25770	58204	PAPER TOWEL, DISPENSER CENTERPULL
47	8	ES20336		WINDOW, GLASS BLOCK 16"H X 32"W FEDERAL CUBIT USING 8" X 8" WECK ESSEX #340 GLASS BLOCK DRW 091517SC.1 R1

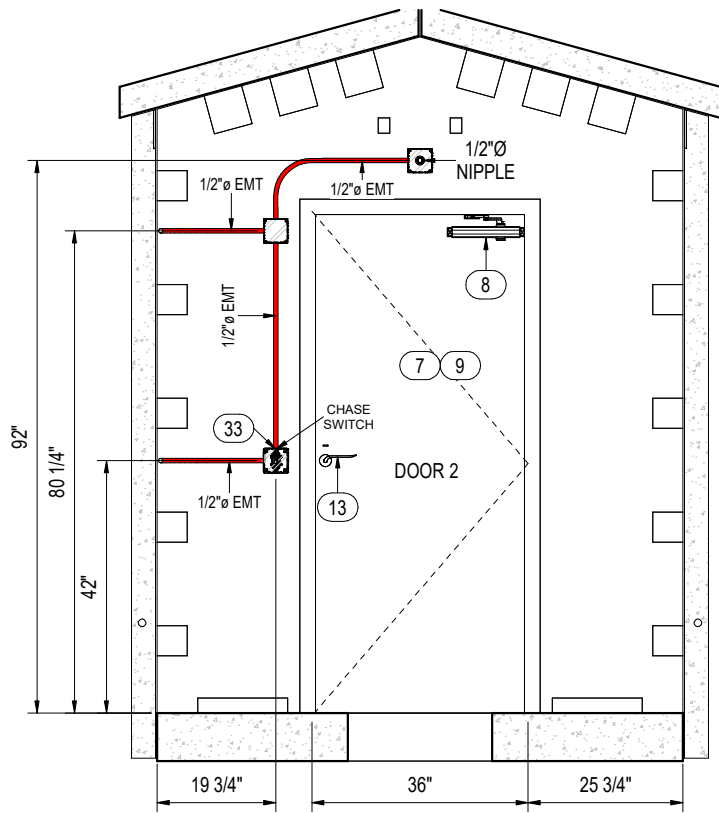


KEYPLAN

REV NO.	DESCRIPTION	DATE	DWN BY
1			

	1090 Industrial Blvd. Bessemer, AL 35022 Ph# 205-980-4565 F# 877-675-5851 Email: info@modularconnections.com	DATE	JOB NO.
		11/7/23	MCP1537 - MC5341
TITLE		DRAWING NO.	DRAWN BY
ENDWALL PANEL A (INTERIOR)		D22246	OS
SCALE		PER DRAWING	CHECKED BY
			WHS
			SHEET
			E5.1

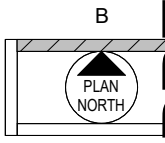
1/24/2024 8:11:27 AM C:\Revit\MCS341_CNTRL_S_v06.02_usulivanMTE5W.rvt



1 PANEL B - LAYOUT (INTERIOR)
3/4" = 1'-0"

EQUIPMENT LIST (BY SHEET)

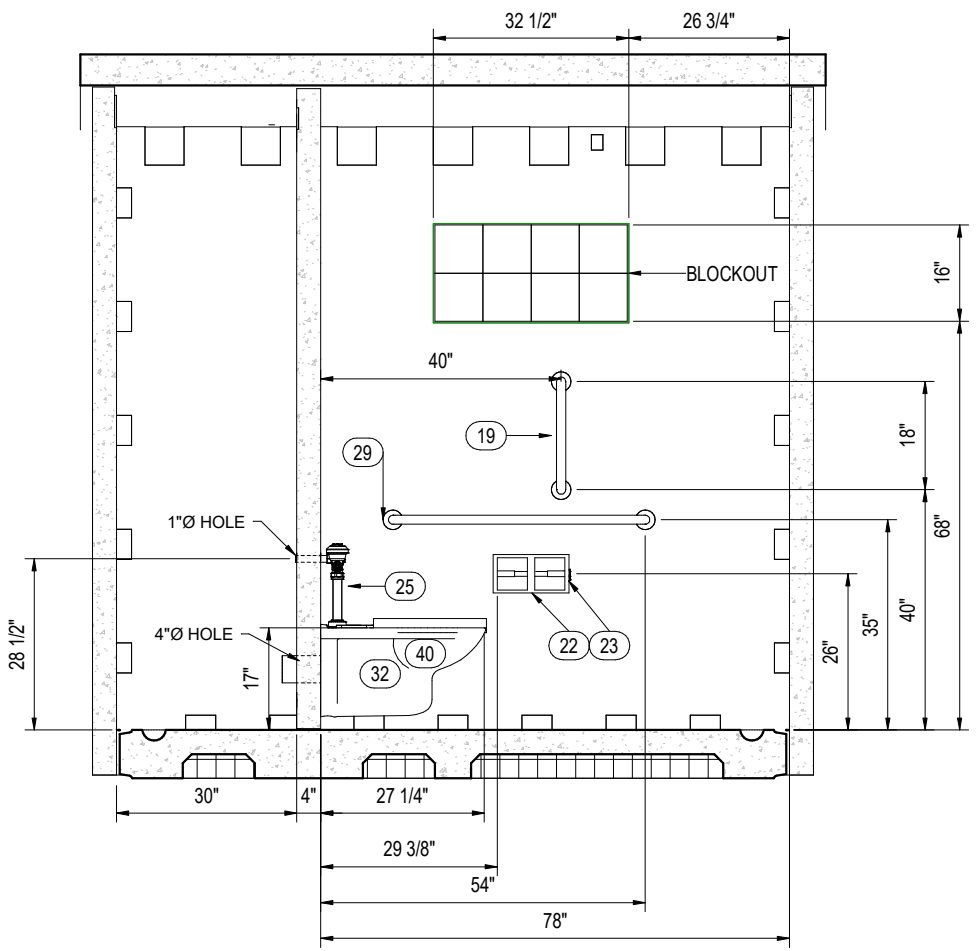
ITEM #	QTY.	PART #	MODEL #	DESCRIPTION
7	1	ES3827		DOOR FRAME, 3070 LHR 16GA GALV 4" DEPTH SNGL RBBT MSNRY 4-1/2" SW HINGE (3) 4-7/8" ANSI STRIKE CLSR RNFRCD CECO LCTNS NO ANCHORS WELDED PRIME PAINTED
8	1	ES14426	7100-BC-D SHO-689	DOOR CLOSER, PDQ HEAVY DUTY PARALLEL STOP / THMB TRN HOLD OPEN
9	1	ES3828UH MB		DOOR, 3070 18GA GALV UH MORTISE RNFRCMNT BLANK FACES W/ EDGE CUT OUT CLSER RNFRCD URETHANE CORE PRIME PNTD CECO VERSADOOR
13	1	ES11019	MR 136 PFEF 626	LOCKSET, MORTISE PDQ LHR SF7L 7 PIN CYLINDER LESS CORE 136 CORRIDOR ANSI F13
33	1	ES190	1221I	SWITCH, 20A 120-277V SPST TGGL IVORY
35	1	ES11710		NIPPLE, 1/2" X 6" RIGID GALV CONDUIT TBE
36	2	ES971	L-100	LOCKNUT, 1/2" CONDUIT STEEL STMPD ZP
37	1	ES196	BU-501	BUSHING, 1/2" PLASTIC INSULATING ABB #



KEYPLAN

REV NO.	DESCRIPTION	DATE	DWN BY
MODULAR CONNECTIONS, LLC 1090 Industrial Blvd. Bessemer, AL 35022 Ph# 205-980-4565 F# 877-675-5551 Email: info@modularconnections.com		DATE	JOB NO.
TITLE		11/7/23	MCP1537 - MC5341
DRAWING NO.		D22246	DRAWN BY
SCALE		PER DRAWING	OS
			CHECKED BY
			WHS
			SHEET
			E5.2

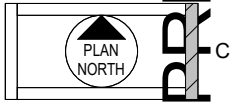
1/24/2024 8:11:29 AM C:\Revit\MCS41_CENTL_S_v06.02_osullivan\MTE5W.rvt



① PANEL C - LAYOUT (INTERIOR)
3/4" = 1'-0"

EQUIPMENT LIST (BY SHEET)

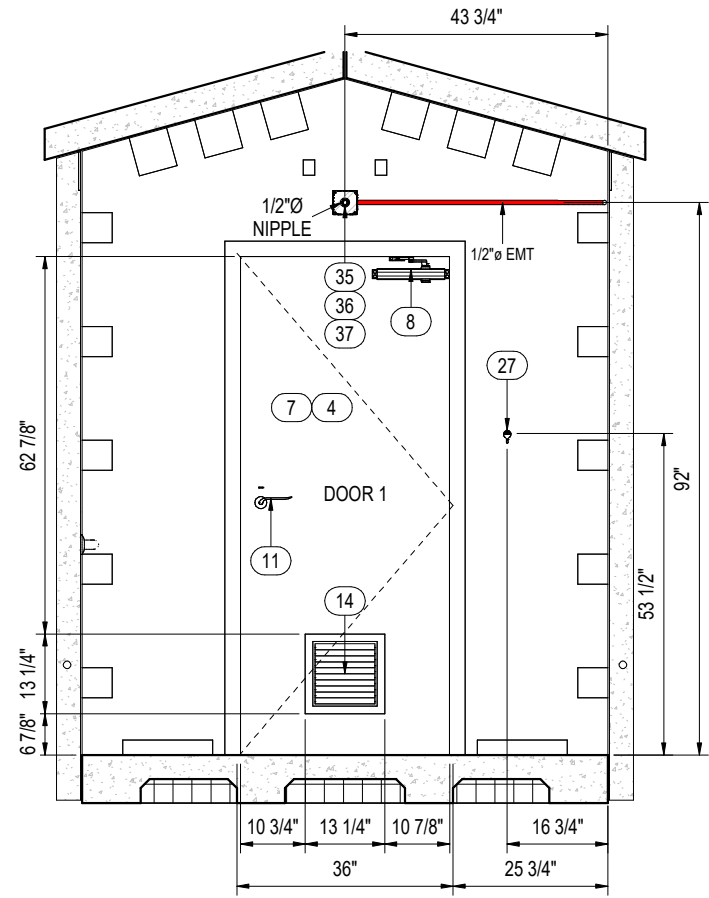
ITEM #	QTY.	PART #	MODEL #	DESCRIPTION
19	1	ES17170	6RGG5	GRAB BAR, 18" X 1-1/2" DIA SATIN (SMOOTH) SS CNCLD SNAP ON FLNG JNS STPHNS # G13-118 FERG GB18SF2 GRNGR # 6RGG5
22	1	ES6686	TP-2	TOILET PAPER DISPENSER, 2 ROLL STAINLESS HARDENED ROYCE ROLLS TP-2
23	1	ES6686C	TP-CLIP	TOILET PAPER DISPENSER, RETAINING CLIP ROYCE ROLLS
25	1	ES16456	#Z6000-W S1-YB-YC	VALVE, FLUSH TOILET 1.6 GPF ADA ZURN W/ SWEAT SOLDER KIT
29	1	ES15684	8122-0014 20	GRAB BAR, 42" X 1-1/2" DIA SAFETY GRIP CONCEALED FLNG SS BRADLEY 8122-001420 GRNGR # 33MP46
32	1	ES22189	K-84325-0	TOILET, CHINA WHITE WALL MNT KOHLER K-84325-0 1-1/2" TOP SPUD KINGSTON ULTRA
40	1	ES17175	46W155	TOILET, SEAT ENLNGTD BOWL OPN FRNT PLASTIC WHITE CHECK HNGE SELF-SUSTAINING NO LID BEMIS # 1955SST GRNGR # 46W155
47	8	ES20336		WINDOW, GLASS BLOCK 16"H X 32"W FEDERAL CUBIT USING 8" X 8" WECK ESSEX #340 GLASS BLOCK DRW 091517SC.1 R1



KEYPLAN

REV NO.	DESCRIPTION	DATE	DWN BY
	MODULAR CONNECTIONS MODULAR CONNECTIONS, LLC 1090 Industrial Blvd. Bessemer, AL 35022 Ph# 205-980-4565 F# 877-675-5551 Email: info@modularconnections.com	11/7/23	OS
TITLE: ENDWALL PANEL C (INTERIOR)		DRAWING NO. D22246 SCALE: PER DRAWING	JOB NO. MCP1537 - MC5341 SHEET: E5.3

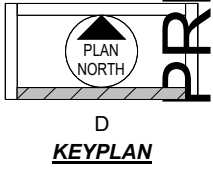
1/24/2024 8:11:30 AM C:\Revit\MC5341_C\INTL_S_v06.02_osullivan\MTE5W.rvt



① PANEL D - LAYOUT (INTERIOR)
3/4\" = 1'-0\"

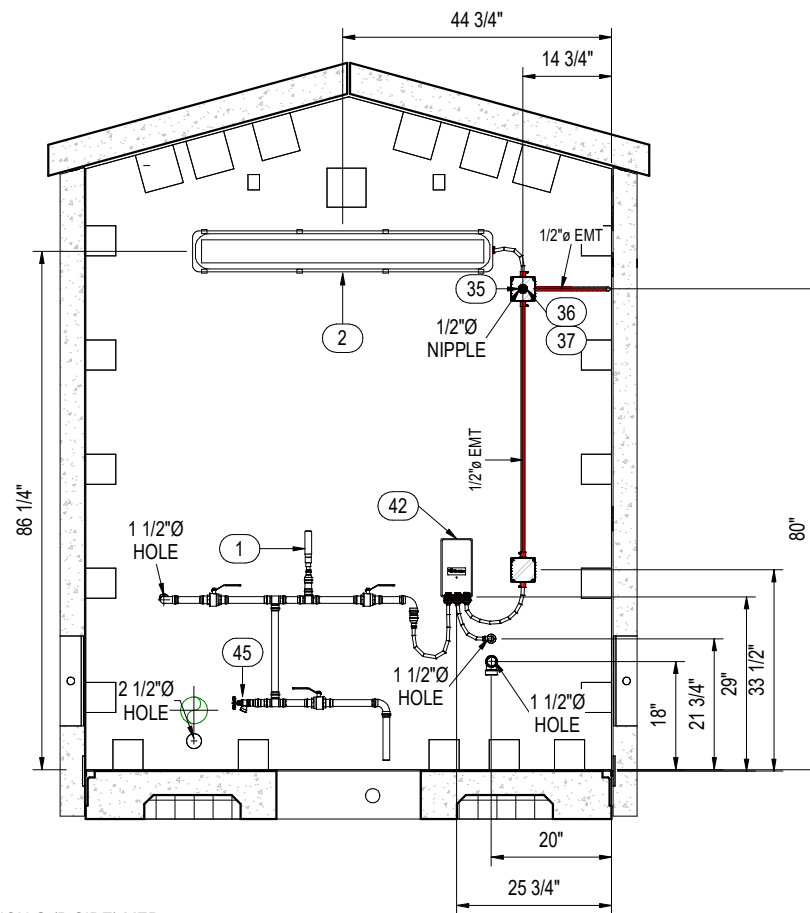
EQUIPMENT LIST (BY SHEET)

ITEM #	QTY.	PART #	MODEL #	DESCRIPTION
4	1	ES3828UH		DOOR, 3070 18GA GALV UH MORTISE PREP CLSER RNFRCD URETHANE CORE PRIME PAINTED CECO VERSADOOR
7	1	ES3827		DOOR FRAME, 3070 LHR 16GA GALV 4\" DEPTH SNGL RBBT MSNRY 4-1/2\" SW HINGE (3) 4-7/8\" ANSI STRIKE CLSR RNFRCD CECO LCTNS NO ANCHORS WELDED PRIME PAINTED
8	1	ES14426	7100-BC-D SHO-689	DOOR CLOSER, PDQ HEAVY DUTY PARALLEL STOP / THMB TRN HOLD OPEN
11	1	ES18365	MR 260 PJSJ 630/US32D	LOCKSET, MORTISE PDQ MR 260 PJSJ 630/US32D LEFT HAND & SFIC 6 PIN CYLINDER LESS CORE 260 FACULTY RESTROOM W/ DEADBOLT & INDICATOR ***USE LMO PREP DOOR*** OCCUPIED VACANT
14	1	ES19508		DOOR LOUVER, 12\" X 12\" NON-VISION INVERTED \"Y\" 18 GA FRAME 20 GA BLADES GRAY PWDR COAT AIR LOUVERS # 800A1 1212G
27	1	ES9005	4JG66	COAT HOOK, SILVER FINISH WALL MNT
29	1	ES15684	8122-0014 20	GRAB BAR, 42\" X 1-1/2\" DIA SAFETY GRIP CONCEALED FLNG SS BRADLEY 8122-001420 GRNGR # 33MP46
35	1	ES11710		NIPPLE, 1/2\" X 6\" RIGID GALV CONDUIT TBE
36	2	ES971	L-100	LOCKNUT, 1/2\" CONDUIT STEEL STMPD ZP
37	1	ES196	BU-501	BUSHING, 1/2\" PLASTIC INSULATING ABB #



REV NO.	DESCRIPTION	DATE	DWN BY
		1090 Industrial Blvd. Bessemer, AL 35022 Ph# 205-980-4565 F# 877-675-5551 Email: info@modularconnections.com	DATE: 11/7/23 JOB NO.: MCP1537 - MC5341
TITLE: SIDEWALL PANEL D (INTERIOR)		DRAWING NO.: D22246 SCALE: PER DRAWING	DRAWN BY: OS CHECKED BY: WHS SHEET: E5.4

1/24/2024 8:11:31 AM C:\Revit\MCS341_CNTRL_S_v06.02_osullivan\MTE5W.rvt



① PARTITION G (B SIDE) MEP
3/4" = 1'-0"

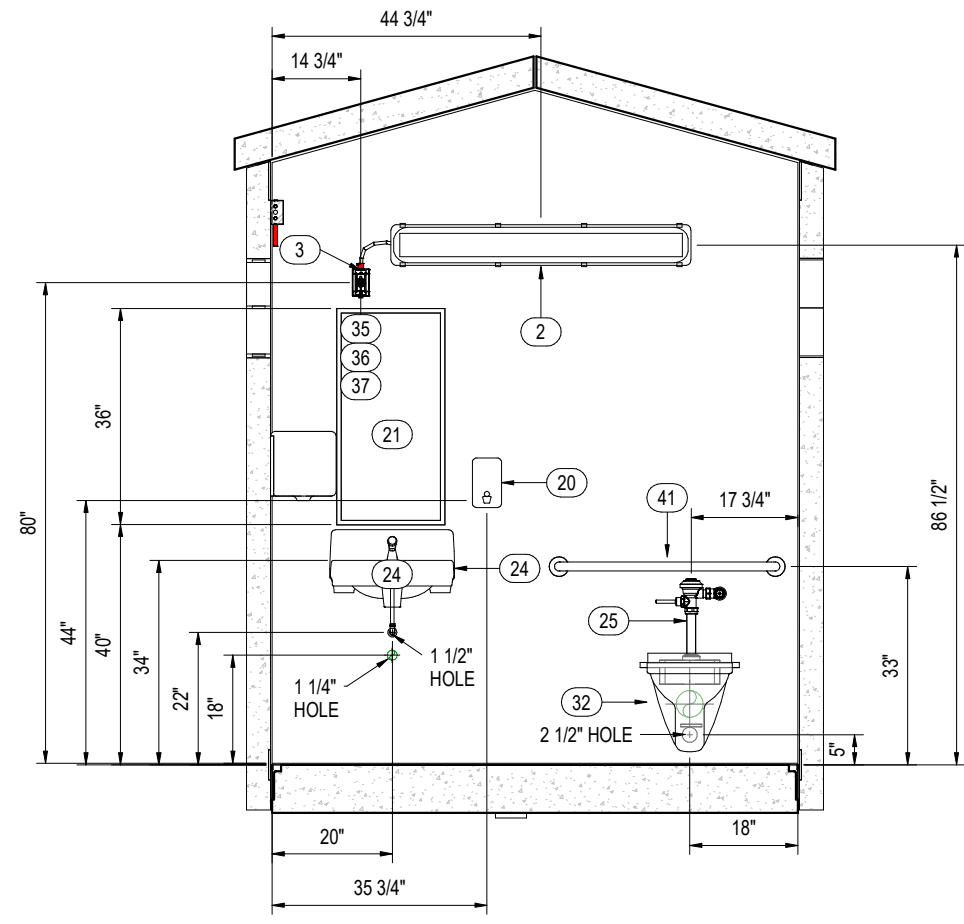
EQUIPMENT LIST (BY SHEET)

ITEM #	QTY.	PART #	MODEL #	DESCRIPTION
1	1	ES17400	1250XL-A	WATER HAMMER ARRESTOR, 1/2" MNPT
2	2	ES20987	SEAL4-50N /D10	LIGHT, 4' LED 50W WASHDOWN SURFACE MNT 4000K LED 120/277 WHITE
25	1	ES16456	#Z6000-W S1-YB-YC	VALVE, FLUSH TOILET 1.6 GPF ADA ZURN W/ SWEAT SOLDER KIT
26	1	ES13834	Z86300-XL	FAUCET, ZURN PUSH BUTTON
32	1	ES22189	K-84325-0	TOILET, CHINA WHITE WALL MNT KOHLER K-84325-0 1-1/2" TOP SPUD KINGSTON ULTRA
35	1	ES11710		NIPPLE, 1/2" X 6" RIGID GALV CONDUIT TBE
36	4	ES971	L-100	LOCKNUT, 1/2" CONDUIT STEEL STMPD ZP
37	2	ES196	BU-501	BUSHING, 1/2" PLASTIC INSULATING ABB #
40	1	ES17175	46W155	TOILET, SEAT ENLNGTD BOWL OPN FRNT PLASTIC WHITE CHECK HNGE SELF-SUSTAINING NO LID BEMIS # 1955SSCT GRNGR # 46W155
42	1	ES11629	SP2412	WATER HEATER, TANKLESS 2.4 KW 120VAC EEMAX # SP2412
45	1	ES21309	205F04LF	BOILER DRAIN, 3/4" MPT BRASS LEAD FREE ANGLE SPOUT

REV NO.	DESCRIPTION	DATE	DWN BY

		1090 Industrial Blvd. Bessemer, AL 35022 Ph# 205-980-4565 F# 877-675-5551 Email: info@modularconnections.com	
DRAWING NO. D22246		DATE 11/7/23	
TITLE PARTITION G (B SIDE)		JOB NO. MCP1537 - MC5341	
SCALE PER DRAWING		DRAWN BY OS	
		CHECKED BY WHS	
		SHEET E6.5	

1/24/2024 8:11:32 AM C:\Revit\MCS341_CENTL_S_v06.02_osullivan\MTE5W.rvt



① PARTITION G (D SIDE) MEP
3/4" = 1'-0"

EQUIPMENT LIST (BY SHEET)

ITEM #	QTY.	PART #	MODEL #	DESCRIPTION
2	2	ES20987	SEAL4-50N /D10	LIGHT, 4' LED 50W WASHDOWN SURFACE MNT 4000K LED 120/277 WHITE
3	1	ES18939	UW-100-24 -W	OCCUPANCY SENSOR, 18-24VDC 24VAC SPDT WHITE
20	1	ES22463	54ZU84	SOAP DISPENSER, 40 OZ (1.2L)
21	1	ES16897	M5300-183 6	MIRROR, 18" X 36"
24	1	ES17788	12-314	LAVATORY, CHINA WALL MTD 19"W X 10.5"H X 17"D 4" CENTERS WHITE
25	1	ES16456	#Z6000-W S1-YB-YC	VALVE, FLUSH TOILET 1.6 GPF ADA ZURN W/ SWEAT SOLDER KIT
26	1	ES13834	Z86300-XL	FAUCET, ZURN PUSH BUTTON
32	1	ES22189	K-84325-0	TOILET, CHINA WHITE WALL MNT KOHLER K-84325-0 1-1/2" TOP SPUD KINGSTON ULTRA
35	1	ES11710		NIPPLE, 1/2" X 6" RIGID GALV CONDUIT TBE
36	2	ES971	L-100	LOCKNUT, 1/2" CONDUIT STEEL STMPD ZP
37	1	ES196	BU-501	BUSHING, 1/2" PLASTIC INSULATING ABB #
40	1	ES17175	46W155	TOILET, SEAT ENLNGTD BOWL OPN FRNT PLASTIC WHITE CHECK HNGE SELF-SUSTAINING NO LID BEMIS # 1955SSCT GRNGR # 46W155
41	1	ES17169	8122-0013 60	GRAB BAR, 36" X 1-1/2" DIA SATIN (SMOOTH) SS CNCLD SNAP ON FLNG JNS STPHNS # G13-136 FERG GB36SF2 GRNGR # 6RGG7
44	1	ES21233	B-102-012	FLOOR DRAIN, 2" INTERGAL TRAP CAST IRON W/ 4-1/2" CHR M PLATED BRSS STRNR
46	1	ES25770	58204	PAPER TOWEL, DISPENSER CENTERPULL
47	4	ES20336		WINDOW, GLASS BLOCK 16"H X 32"W FEDERAL CUBIT USING 8" X 8" WECK ESSEX #340 GLASS BLOCK DRW 091517SC.1 R1

REV NO.	DESCRIPTION	DATE	DWN BY
		1090 Industrial Blvd. Bessemer, AL 35022 Ph# 205-980-4565 F# 877-675-5551 Email: info@modularconnections.com	DATE: 11/7/23 JOB NO.: MCP1537 - MC5341
TITLE: PARTITION G (D SIDE)		DRAWING NO.: D22246 SCALE: PER DRAWING	DRAWN BY: OS CHECKED BY: WHS SHEET: E6.6

1/24/2024 8:11:33 AM C:\Revit\MC5341_CNTRL_S_v06.02_osullivan\MTE5W.rvt

Branch Panel: ACP

Location:

Supply From:

Mounting: Surface

Enclosure NEMA Rating: Type 1

Brand: SQ-D

Volts: 120/240 Vac

Phases: 1

Wires: 3

Feed:

Panel Breaker Type:

A.I.C. Rating: 10kA

Mains Type: MCB

Mains Rating: 100 A

MCB Rating: 100 A

Feed-Thru Lug Kit # N/A

Sub-Feed Lug Kit # N/A

Neutral Kit #

Ground Kit # PK15GTA

Main Breaker Kit #

Model # QO124M100P

Enclosure #


Cover # QOC24US

Main Breaker # QO

Notes:
1) CIRCUITS SHOWN WITHOUT A WIRE TYPE AND WIRE SIZE ARE SPARE BREAKERS RESERVED AS PER THE OWNER'S REQUEST. THESE CIRCUITS ARE TO BE DESIGNED AND INSTALLED BY OTHERS IN ACCORDANCE WITH ALL APPLICABLE CODES AND SUBJECT TO AUTHORITIES HAVING JURISDICTION.

CKT	Circuit Description	Trip	Poles	Wire Type	Wire Size	AØ		BØ		Wire Size	Wire Type	Poles	Trip	Circuit Description	CKT
1	HEATER	20 A	2	THHN	2-#12, 1-#12	1128 VA	53 VA			1-#12, 1-#12, 1-#12	THHN	1	20 A	RESTROOM LIGHTING/EXH FAN	2
3		--	--	--	--			1128 VA	180 VA	1-#12, 1-#12, 1-#12	THHN	1	20 A	RESTROOM RECEPTACLES GRP 4	4
5	SPARE	20 A	1	--	--	0 VA	0 VA			--	--	1	20 A	SPARE	6
7	CHASE LIGHTING	20 A	1	THHN	1-#12, 1-#12, 1-#12			53 VA	2400 VA	1-#10, 1-#10, 1-#10	THHN	1	30 A	WATER HEATER	8
9	CHASE RECEPTACLES GRP 9	20 A	1	THHN	1-#12, 1-#12, 1-#12	180 VA	0 VA			--	--	1	20 A	SPARE	10
11	BLANK	--	1	--	--			--	0 VA	--	--	1	20 A	SPARE	12
13	BLANK	--	1	--	--					--	--	1	--	BLANK	14
15	BLANK	--	1	--	--					--	--	1	--	BLANK	16
17	BLANK	--	1	--	--					--	--	1	--	BLANK	18
19	BLANK	--	1	--	--					--	--	1	--	BLANK	20
21	BLANK	--	1	--	--					--	--	1	--	BLANK	22
23	BLANK	--	1	--	--					--	--	1	--	BLANK	24
Total Load:						1361 VA		3761 VA							
Total Amps:						11 A		31 A							
Load Classification		Connected Load		Demand Factor		Estimated Demand		Panel Totals							
Lighting		106 VA		125.00%		132 VA									
Other		4656 VA		100.00%		4656 VA		Total Conn. Load: 5122 VA							
Receptacles		360 VA		100.00%		360 VA		Total Est. Demand: 5148 VA							
								Total Conn. Current: 21 A							
								Total Est. Demand Current: 21 A							

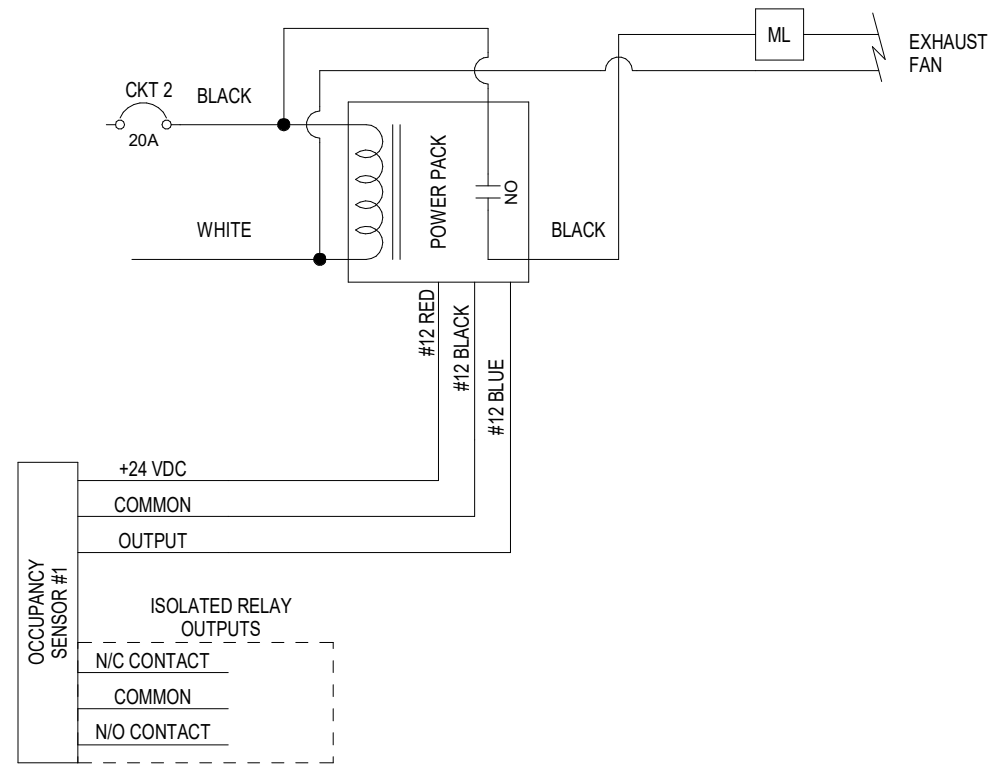
PRELIMINARY SUBJECT TO OWNER REVIEW

REV NO.	DESCRIPTION	DATE	DWN BY
 MODULAR CONNECTIONS, LLC All Rights Reserved		1090 Industrial Blvd. Bessemer, AL 35022 Ph# 205-980-4565 F# 877-675-5551 Email: info@modularconnections.com	DATE: 11/7/23 JOB NO.: MCP1537 - MC5341
TITLE: ACP-1 PANEL SCHEDULE SCALE: PER DRAWING		DRAWING NO.: D22246 CHECKED BY: OS DRAWN BY: WHS	SHEET: E7.0


1/24/2024 8:11:34 AM C:\Revit\MCS41_CNTL_S_v06.02_usullivan\M7E5W.rvt

NOTICE: These drawings and specifications are the property of Modular Connections, LLC. All information contained herein which is not known generally in the field of Modular Connections, LLC shall be confidential except to any extent to which it is established to have been known previously from sources other than Modular Connections, LLC. These drawings and specifications may not be reproduced, copied or used as the basis for the manufacture or sale of apparatus without written permission.

1/24/2024 8:11:35 AM
 C:\Revit\MCS341_CNTRL_S_v06.02_usullivan\M7ESW.rvt



① WIRING DIAGRAM - ELECTRICAL EQUIPMENT
 3/4" = 1'-0"

REV NO.	DESCRIPTION	DATE	DWN BY
	 MODULAR CONNECTIONS, LLC All Rights Reserved 1090 Industrial Blvd. Bessemer, AL 35022 Ph# 205-980-4565 F# 877-675-5551 Email: info@modularconnections.com	11/7/23	
TITLE		DRAWING NO.	JOB NO.
WIRING DIAGRAM(S)		D22246	MCP1537 - MC5341
SCALE		CHECKED BY	SHEET
PER DRAWING		WHS	E7.2