

# A New Start for Parks in Woodcreek

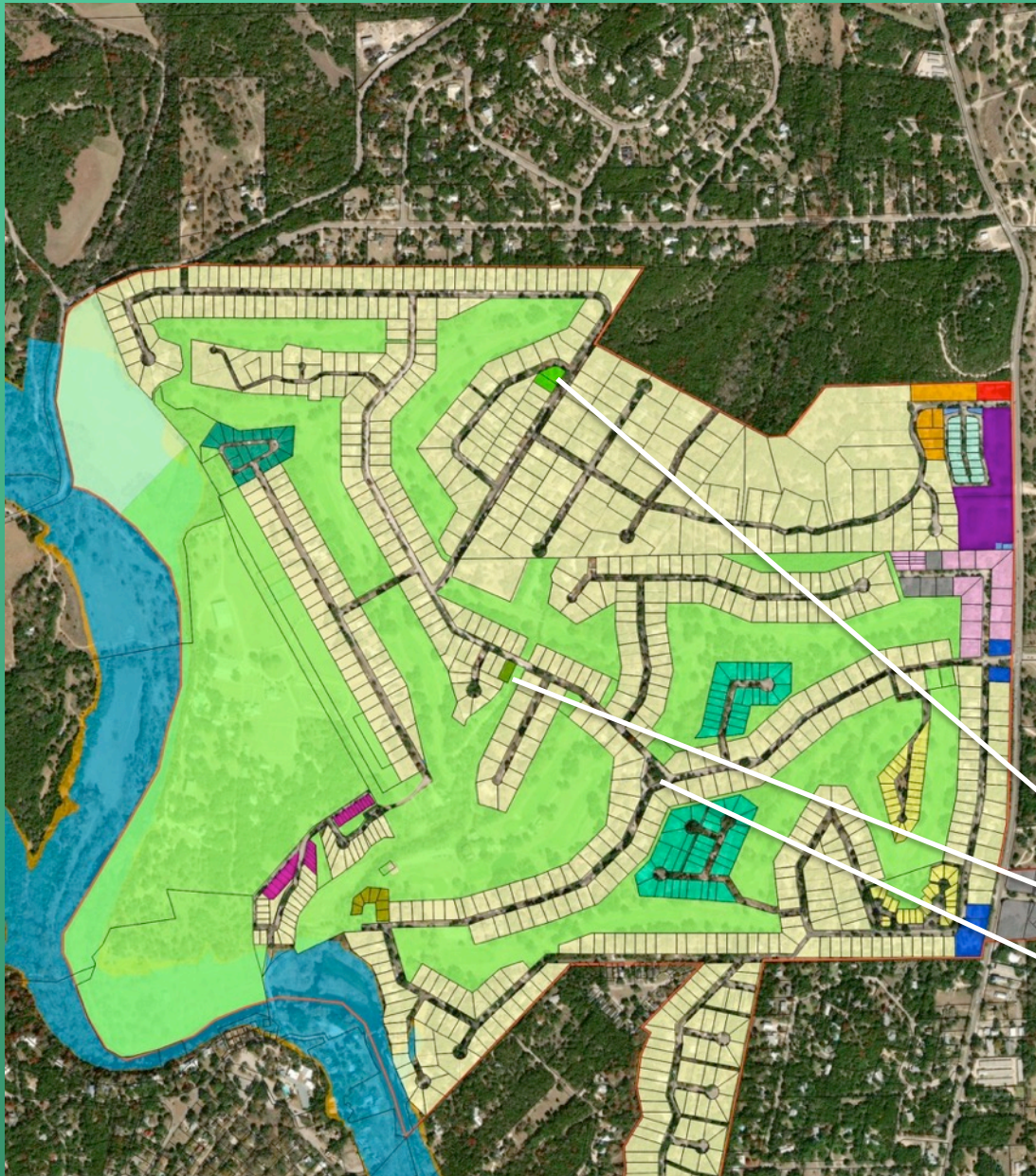
A Presentation by the Parks and Recreation Board to  
The Woodcreek City Council  
June 14, 2023



# A Multifaceted Approach

Limited land availability for parks in Woodcreek has created a need to spread the resources to several areas. No one location can support the level of recreational resources one would find in an average small city park. Instead, the city has decided to spread the equipment to three locations:

1. Augusta Park
2. Creekside Park
3. The Triangle



# Park Types

## *The Triangle*

A gathering place for the community. The 20' diameter octagonal gazebo provides a shaded place for community celebrations, games, rest, meetings, and even reading. It has 3 benches around the interior.

## *Creekside Park*

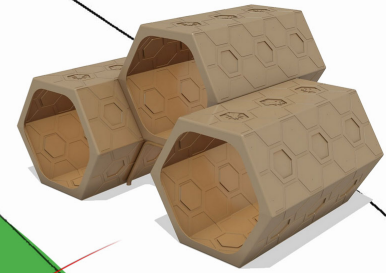
This new pocket park will have an innovative playscape aimed at children from 5-12. It will have Consumer Product Safety Commission-certified climbing, sliding, and exploring features. This park will also have swings for toddlers through adults. Additional natural play elements will be present as well. The entire area will be fenced for safety.

## *Augusta Park*

The largest of the 3 parks at 1 acre will have diverse features for all ages. In addition to the existing bocce ball court, there will be an outdoor table tennis table and corn hole games. This park will also have various natural and manufactured play features.

# Augusta Park

**AUGUSTA LANE**  
(50' R.O.W.)



Natural Play Elements

Rain Garden

**BOCCIE BALL**

REDUCE EXISTING FLOWERBED

PING PONG

**PARKING**

TREE

Rain Garden

Rain Garden

Picnic Tables

Corn Hole

(N34°08'43"E 70.00')

(N34°08'43"E 103.33')

21.2'

18" CORRUGATED METAL PIPE

EDGE ASPHALT

EDGE ASPHALT PAVING

CTION  
he  
ds,

164

163

162

(150.00')

(145.37')

(RADIUS=75')  
(ARC=49.09')

(49.60')

(N34°08'43"E 63.08')

(N67°53'43"E 8.33')

(N67°53'43"E 97.55')

X2



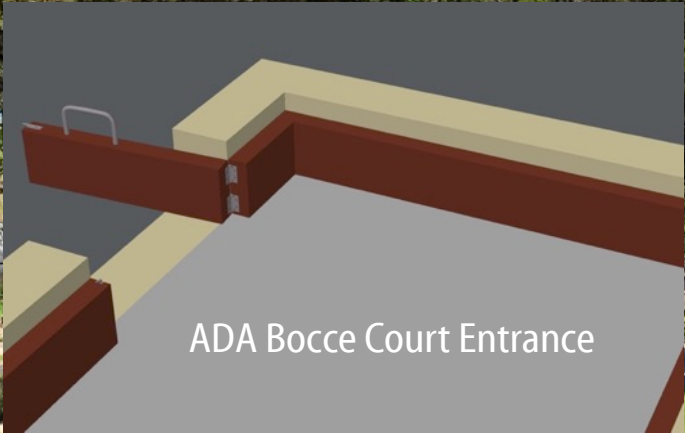
91'

9.8'

12.6'

20.8'

# Augusta Park



# New Augusta Park Elements



Outdoor Table Tennis



Honeycomb Tunnels



Corn Hole

All low maintenance and  
virtually indestructible

# New Natural Augusta Park Elements



Balance log



Small Climbing log



Loose Parts



Park will also have signage to educate about the Rain Garden and labels for various Native trees and plants

# The Triangle





# The Triangle Gazebo Location

Opening will be facing this shaded area for spectators with lawn chairs if there is an event

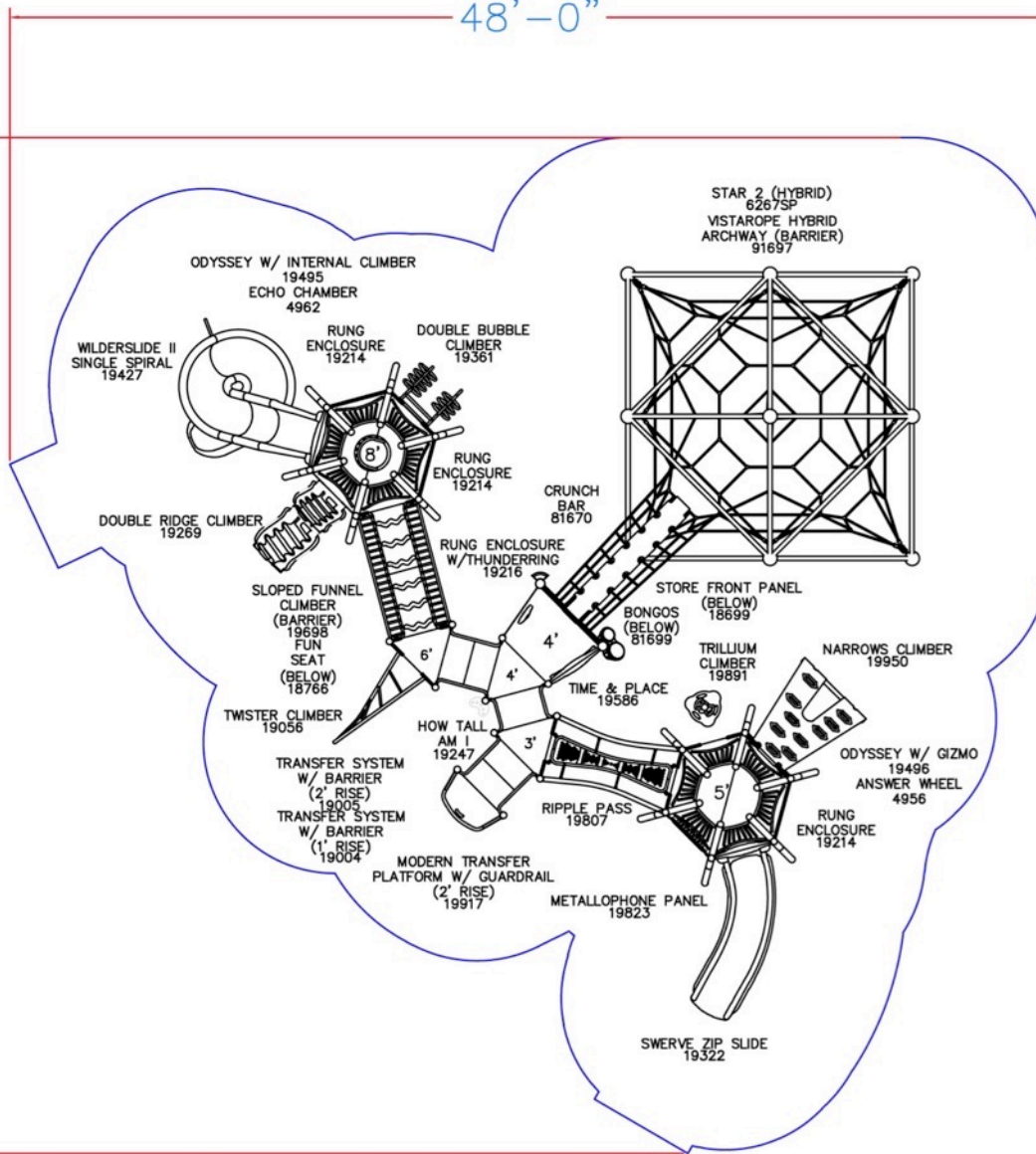




# Creekside Park Playscape Schematic

46'-11"

48'-0"



## Rope Flower Playscape



Color Palette: *Bedrock*

# Creekside Park Other Equipment

## Swings



## Expression Swing

Expression Swing is a GameTime exclusive and the industry's first playground swing that promotes intergenerational play as adults and children swing together. The patented face-to-face design features a bucket seat for children under five and a comfortable adult swing seat that allows a parent and child (or grandparent and grandchild) to interact with each other and experience...

### Features and Benefits:

- See Eye to Eye - Patent-pending face-to-face design positions adult and child at eye level with one another so they can interact
- Swing in Comfort - Exclusive platform swing seat is ergonomically designed for adults and compliant with current swing safety standards



7 1/2' Platform Whirl

# Cost Breakdown

Our original budget of \$267,000 was submitted in August of 2021. Now, almost 2 years later the cost of materials and labor has increased by 20% or more. Our \$267,000 of labor and materials **would now cost \$320,000, \$53,000 more.** Due to this significant increase we edited our plans in Augusta Park and replaced with other less costly items of similar play value. We also have deferred some peripheral items such as additional benches at the Triangle since the gazebo has 3 benches inside. All three parks will have seating provided in the form of benches or tables.

# Cost Summary

## Woodcreek Parks Equipment Cost

<b>Triangle</b>	Estimated Costs	Quotes/Bids	Total per Park
SUBTOTAL	\$12,616.00	\$27,762.00	
			\$40,378.00
<b>Creekside</b>			
SUBTOTAL	\$10,700.00	\$178,908.59	
			\$189,608.59
<b>Augusta</b>			
SUBTOTAL	\$12,799.00	\$19,280.40	
			\$32,079.40
<b>SUBTOTALS</b>	<b>\$36,115.00</b>	<b>\$225,950.99</b>	
Contingency	4,500.00		\$4,500.00
<b>TOTAL EST/QUOTE/BID</b>			<b>\$266,565.99</b>

Estimated Cost is Added to Quote/Bid to get subtotal cost

# Triangle Costs

Triangle Costs				
Description	Est Cost	Bid/Quote	Notes	# Bids
20' Gazebo		\$27,762.00	Fifthroom low bid	3
Gazebo assembly	\$1,316.00		local estimate \$1,100 + 215.96 Butler Cherrypick	1
Slab	\$7,000.00		have 2 bids	2
Electrical	\$2,000.00		Ruth Ann getting bids-AJA, Wimberley Electric	
Water Fountain Slab	\$300.00		TBD-may DIY	
Benches 2 @\$1000 ea	\$2,000.00		Gametime	
<b>SUBTOTAL</b>	<b>\$12,616.00</b>	<b>\$27,762.00</b>	<b>TOTALS ALSO ON SUMMARY SHEET</b>	



# Creekside Park Costs

## Creekside Park Costs

Description	Est Cost	Bid/Quote	Notes	# Bids
CR Quote (Playscape/Swings/etc)		\$161,954.59	\$7,047 in edits from \$165,952-BuyBoard	1
Tree Work		\$4,000.00	Healthy Oak Trees	1
Paths/Landscaping	\$3,000.00		Scope unclear-Include placeholder est	0
Parking (may be optional)	\$3,000.00		Kevin R is getting quotes	0
Permanent Fence		\$12,954.00	Discount Fence LLC	0
Construction Fence	\$900.00		Lowes-4'high safety fence+ fence posts	0
PVC Table (2?)	\$2,800.00		Uline etc	3
Bicycle Rack	\$1,000.00		Playground Oufitters-online price \$785+ shipping	
<b>TOTAL</b>	<b>\$10,700.00</b>	<b>\$178,908.59</b>	<b>TOTALS ALSO ON SUMMARY SHEET</b>	

# Augusta Park Costs

Augusta Park Costs				
Description	Estimated Cost	Bid/Quote	Notes	# Bids
Bocce Turf		\$3,868.23	Synthetic Turf - San Antonio	2
Bocce Turf labor/materials		\$3,000.00	Puccis-Part of \$9,200 bid	2
ADA bocce ball mod		\$1,200.00	Puccis-Part of \$9,200 bid	2
Concrete Games(Ping Pong,Cornhole)		\$9,559.00	Multiple Bids	3
Signage	\$2,000.00		Need to ask for "cost not to exceed" given MULTIPLE TBD SIGNS	3?
Bocce Ball Score and Holder		\$323.17	<a href="http://bocceballsupplies.com">bocceballsupplies.com</a>	3?
Decomposed granite area	\$5,000.00		Puccis-Part of \$9,200 bid	4?
Engineered Wood & Border		\$1,330.00	Wimberley Landscaping supply- 20 yds @ \$55ea + \$130 delivery	1
Hex Tunnels	\$5,500.00		Bundle with Creekside equipment-BuyBoard	1
Seed-Rain Garden	\$299.00		Becky D- Under \$300	1
<b>TOTAL</b>	<b>\$12,799.00</b>	<b>\$19,280.40</b>	<b>TOTALS ALSO ON SUMMARY SHEET</b>	

# Timeline

## Major Items

<b>Items</b>	<b>June</b>	<b>July</b>	<b>August</b>	<b>September</b>	<b>October</b>	<b>November</b>	<b>December</b>
Creekside Tree Work		█					
Creekside Fence			█				
Gazebo		█	█				
Playscape		█	█	█	█		