

Augusta Park Rain Garden
Woodcreek, TX



Augusta Park Overview

A Mixed Use Park

- There are currently play areas (Bocce Ball, Ping Pong & Corn Hole) as well as picnic areas
- Much of the area is more wild with large natural areas

The Rain Garden is in disrepair

- Originally the rain garden was planted and tended to but has received adequate care over the years and has become overgrown with invasive weeds
- Often the rain garden does not sufficiently capture the amount of rain that rolls down the hill

Our city is invested & committed to making Augusta Park beautiful & educational

Our Partners in this work

Wimberley Chapter of the
Girl Scouts

The City of Woodcreek
Parks & Rec Board

Master Naturalists

Wimberley Chapter of the
Boy Scouts

Camp Young Judea

Our project is collaborative across many organizations, sharing responsibility & success

Three Phased Process

Where we've been, where we're going



1: Design & Plan

- Landscape architect Katherine Evans designed full blueprints to inform improvements
- We've met with Girl Scouts & Boy Scouts to add a water source for summer months and a butterfly garden
- Our City Council has approved this project and invested \$\$\$



2: Build Paths, place rock, prep area

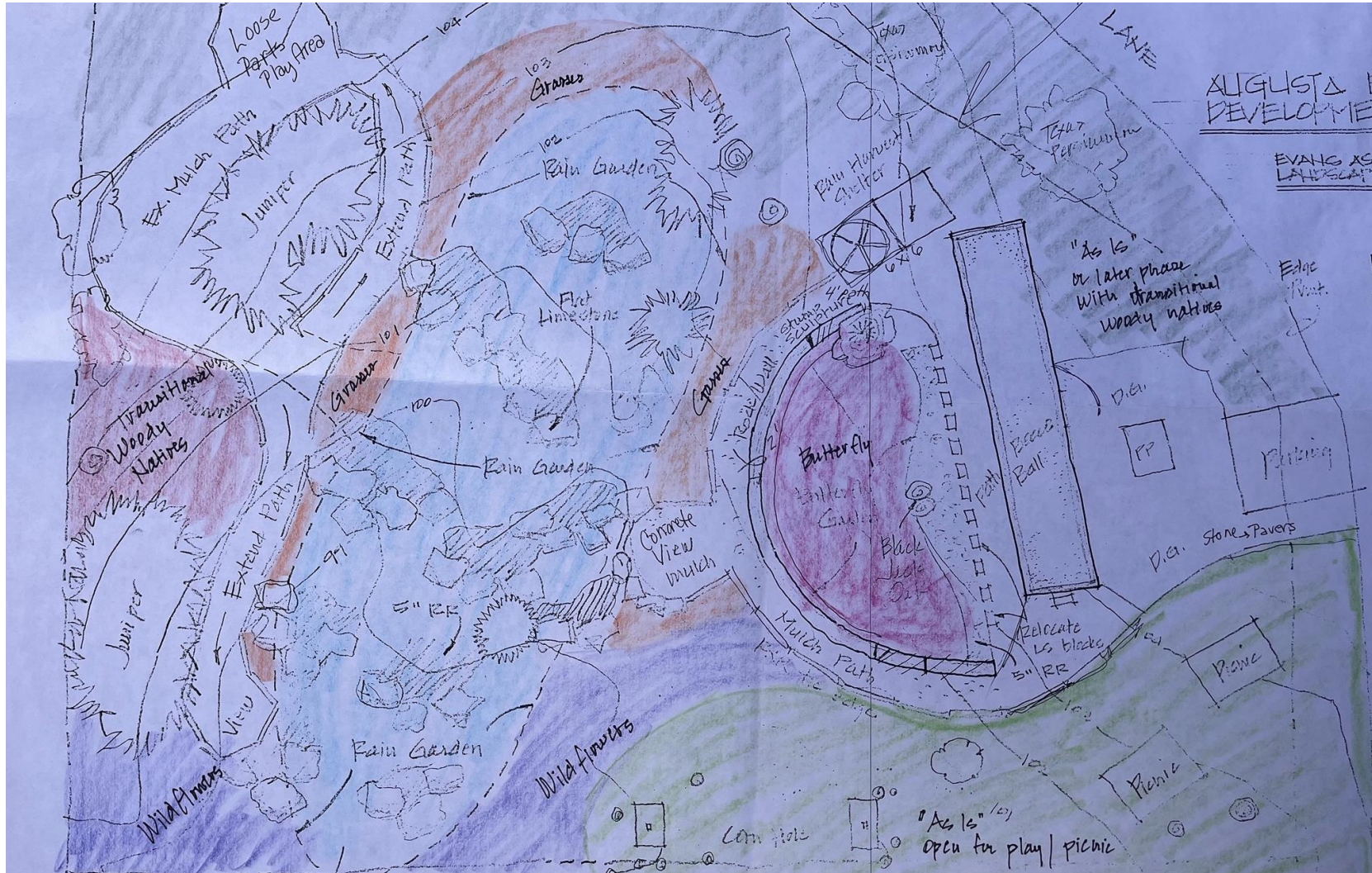
- As of today, large boulders & river rock have been placed in the rain garden
- This spring/summer, a planning team is needed to adequately prep the areas where planting will occur
- CYJ volunteers will place mulch paths per plans this summer



3: Fall plant and maintain

- 3 work days will be needed this fall to plant some of the plants for the rain garden
- Other plants in areas not yet ready (i.e. solarized areas) will be planted in spring 2025
- Maintenance will be handled through the city parks & rec board

Phase 1: Would if we used natural rock to slow water and help reabsorption?



Phase 1: Key Components of the New Design

- Large sandstone rock & river rock
- Redesigned adjacent beds with more native plants
- A pollinator garden
- A water source with a large rain barrel collector

Phase 2: Placing Rock & Prepping Areas

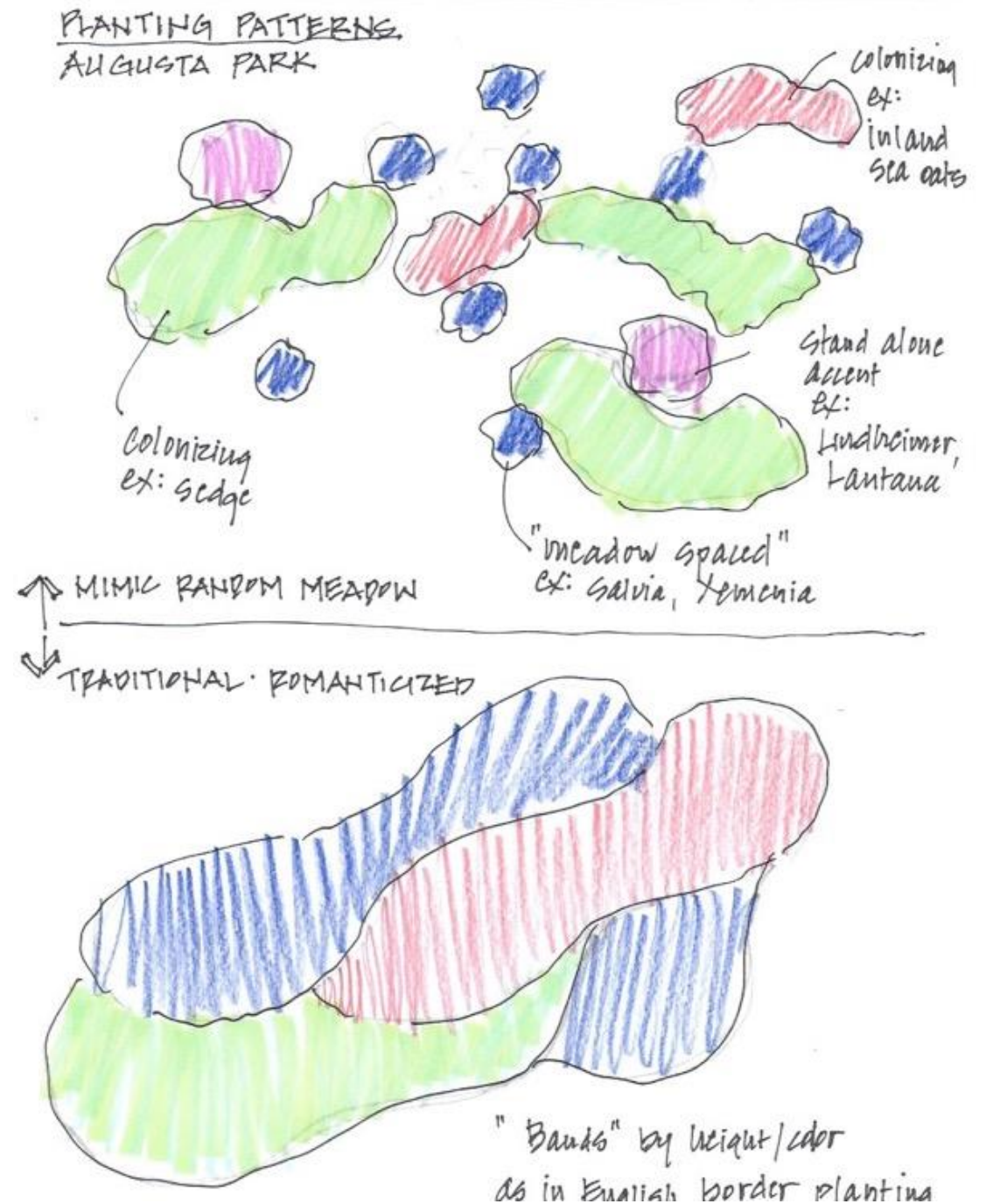


- All boulders & river rock have been placed in appropriate areas
- Viewing wall has been constructed & mulch path will wrap around it (summer 2024 project)

Phase 3: Less landscaping, more nature!

A meadow approach

- Let's mimic nature
- Colonizers, Stand Alones & Pop-Ups
- Embracing weeds, when necessary



Our phase 3 needs

- Approved as an official Master Gardener project
- A project team with expertise in planning the planting as well as labor enthusiasts for planting
- Funds to supplement plants

How will this project evolve? Would if we....

Considered this as a potential demo rain garden for HCMGA interns & members to enjoy, invest in and learn from?

Created a presentation around this project to team other HCMGA interns & members how to create a similar garden project from top to tail?

Partnered with Master Naturalists & created a joint project that we both benefit from?