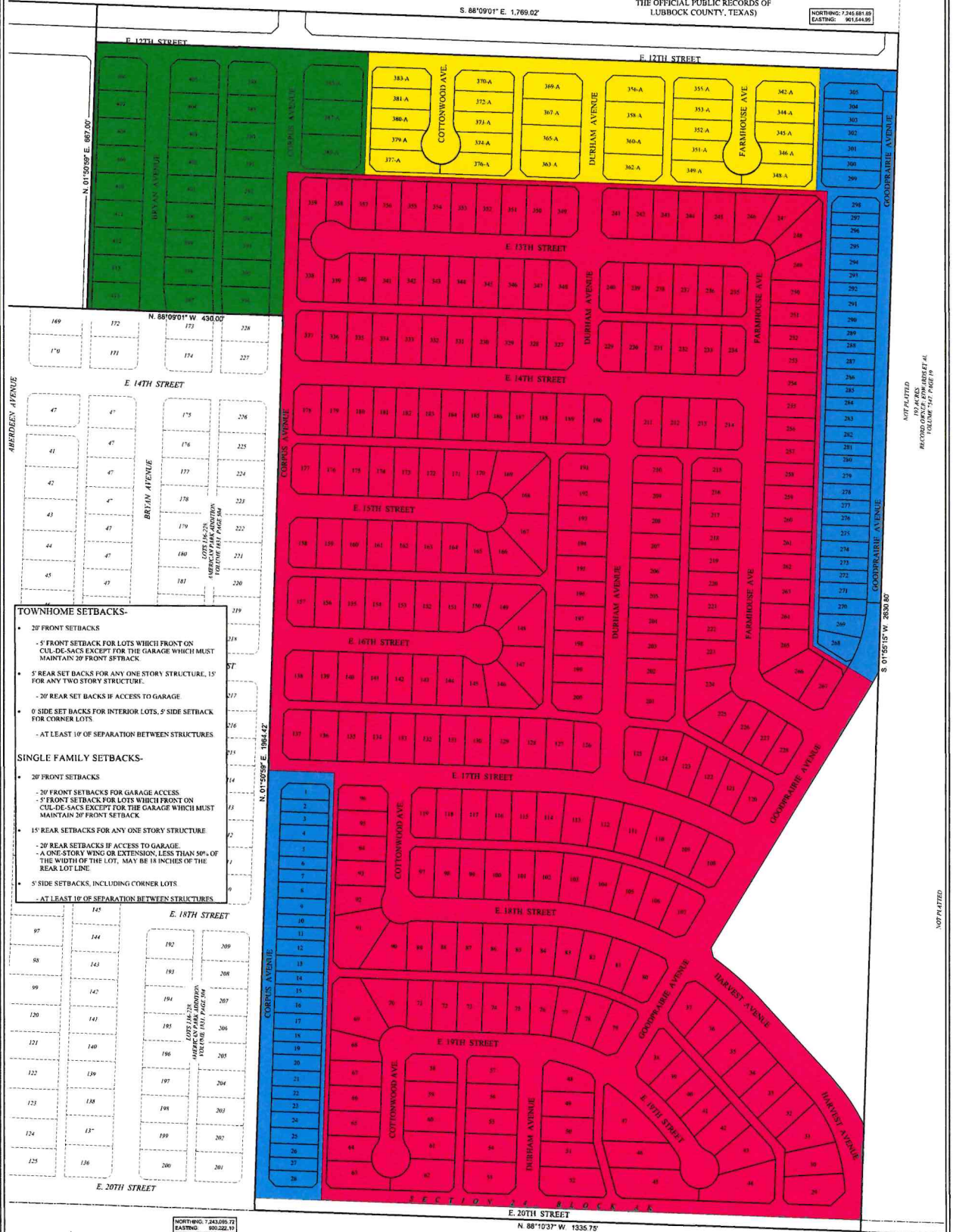


(ZONE CHANGE EXHIBIT)
THE OVERLOOK,
LOTS 1 THROUGH 414,
 AN ADDITION LOCATED IN,
 SECTION 24, BLOCK AK, ABSTRACT NO. 885
 LUBBOCK COUNTY, TEXAS

(WARRANTY DEED RECORDED IN COUNTY
 CLERK'S FILE NUMBER 2019034547 OF
 THE OFFICIAL PUBLIC RECORDS OF
 LUBBOCK COUNTY, TEXAS)

S. 88°09'01" E. 1,769.02'

NORTHING: 7,243,814.89
 EASTING: 961,444.99

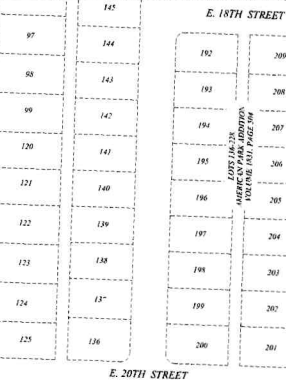


TOWNHOME SETBACKS-

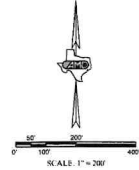
- 20' FRONT SETBACKS
- 5' FRONT SETBACK FOR LOTS WHICH FRONT ON CUL-DE-SACS EXCEPT FOR THE GARAGE WHICH MUST MAINTAIN 20' FRONT SETBACK
- 5' REAR SET BACKS FOR ANY ONE STORY STRUCTURE, 15' FOR ANY TWO STORY STRUCTURE.
- 20' REAR SET BACKS IF ACCESS TO GARAGE
- 0' SIDE SET BACKS FOR INTERIOR LOTS, 5' SIDE SETBACK FOR CORNER LOTS
- AT LEAST 10' OF SEPARATION BETWEEN STRUCTURES

SINGLE FAMILY SETBACKS-

- 20' FRONT SETBACKS
- 20' FRONT SETBACKS FOR GARAGE ACCESS
- 5' FRONT SETBACK FOR LOTS WHICH FRONT ON CUL-DE-SACS EXCEPT FOR THE GARAGE WHICH MUST MAINTAIN 20' FRONT SETBACK
- 15' REAR SETBACKS FOR ANY ONE STORY STRUCTURE
- 20' REAR SETBACKS IF ACCESS TO GARAGE
- A ONE-STORY WING OR EXTENSION, LESS THAN 50% OF THE WIDTH OF THE LOT, MAY BE 18 INCHES FROM THE REAR LOT LINE.
- 5' SIDE SETBACKS, INCLUDING CORNER LOTS
- AT LEAST 10' OF SEPARATION BETWEEN STRUCTURES



- SINGLE FAMILY - 272 LOTS WITH A MINIMUM OF 5,000 SQUARE FEET.
- TOWNHOMES - 66 LOTS WITH A MINIMUM OF 2,800 SQUARE FEET.
- DUPLEX - 30 LOTS WITH A MINIMUM OF 6,000 SQUARE FEET
- OVERLOOK 2B - 28 LOTS WITH A MINIMUM OF 45' LOT WIDTH



NORTHING: 7,243,899.72
 EASTING: 960,222.19
 THE SOUTHWEST CORNER
 OF SECTION 24, BLOCK AK
 IS 848.14' (137.97' x 1350.91'
 FROM THIS POINT

440 ACRES
 RECORD OWNER: E28CPATRACK, ET AL
 CCF#: 2006023606

SECTION 17, BLOCK AK

AMD CIVIL ENGINEERING
 LAND SURVEYING
 AMD Engineering, LLC
 6516 8th Street, Suite 300
 Lubbock, TX 79424
 Phone: 806-771-5876
 Fax: 806-771-7855
 TBP/ELE Reg # 15195800
 Accuracy - Efficiency - Integrity

PROPERTY OWNER: OVERLOOK LAND GROUP, LLC
 ADDRESS: P. O. BOX 52411, LUBBOCK, TEXAS 79453
 PHONE: 806-791-0782
 JOB NUMBER: 20087

CADD
 © 2011 ALL RIGHTS RESERVED

NOT PLATTED
 THIS PARCEL
 RECORDED ON PAGE 19
 TOLL FREE 1-877-PAGE-19

NOT PLATTED