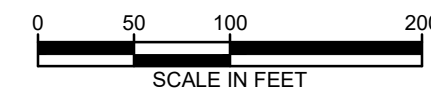
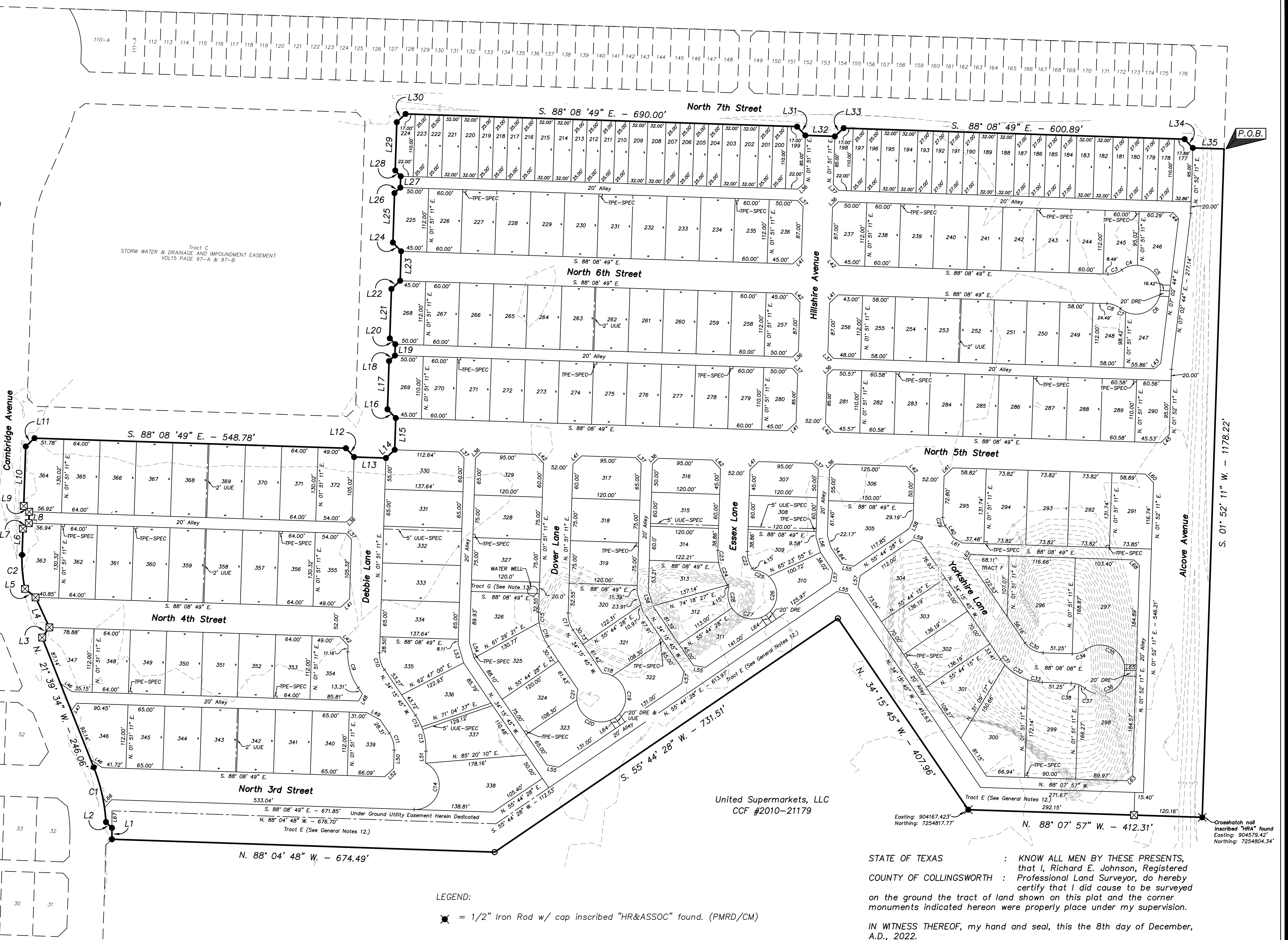
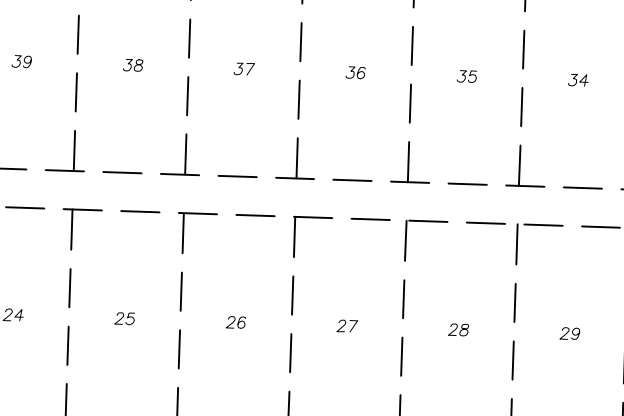
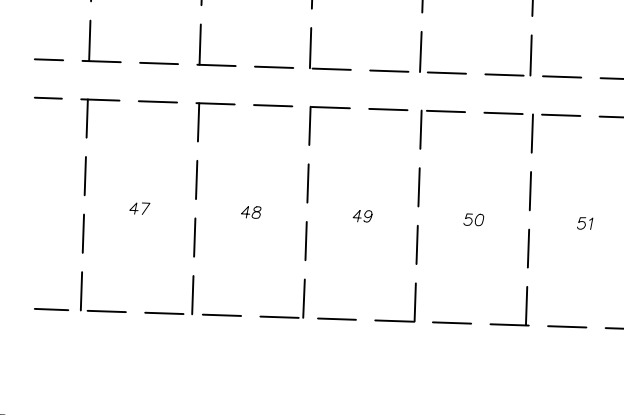
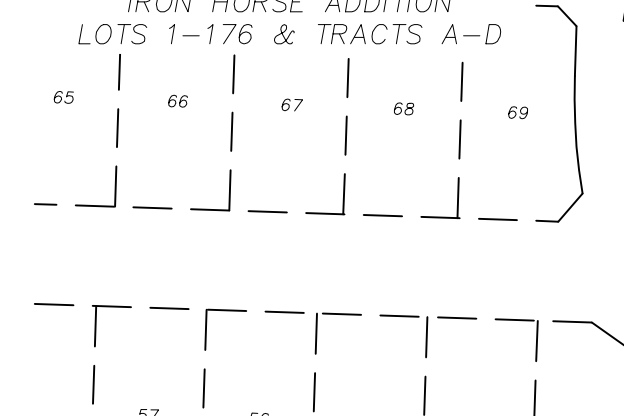
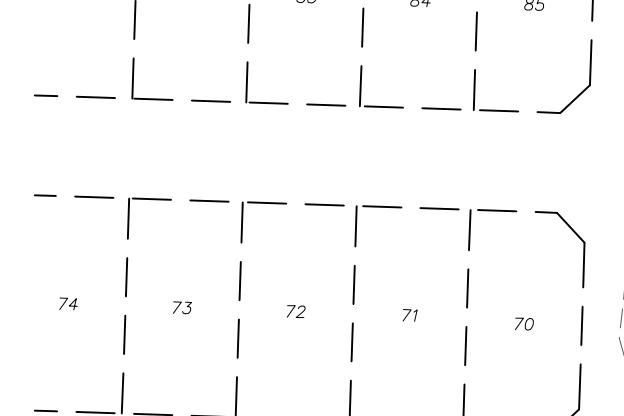
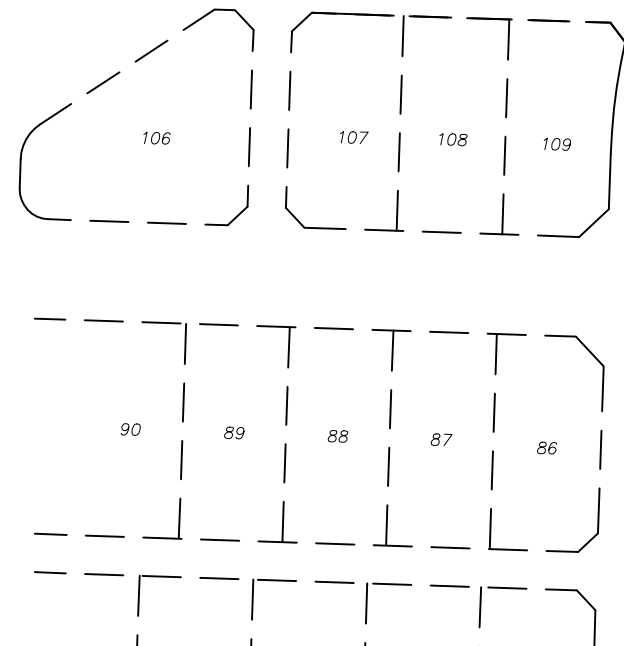


PLAT OF LOTS 177 - 372 & TRACTS E-G,
IRON HORSE ADDITION
 TO THE CITY OF WOLFFORTH, LUBBOCK COUNTY, TEXAS.



NO.	DELTA	RADIUS	ARC DIST	LONG CHORD BRNG	CHORD DIST
C1	18° 05' 41"	314.00'	99.17'	N. 12° 36' 44" W.	98.75'
C2	13° 47' 53"	250.00'	60.21'	N. 04° 59' 09" W.	60.06'
C3	37° 19' 40"	40.00'	26.06'	N. 73° 11' 21" E.	25.60'
C4	38° 54' 20"	43.00'	29.20'	N. 73° 58' 41" E.	28.64'
C5	88° 25' 20"	43.00'	66.36'	S. 42° 21' 29" E.	59.97'
C6	88° 25' 20"	43.00'	66.36'	S. 46° 03' 51" W.	59.97'
C7	38° 54' 20"	43.00'	29.20'	N. 70° 16' 19" W.	28.64'
C8	37° 19' 40"	40.00'	26.06'	N. 69° 28' 59" W.	25.60'
C9	36° 06' 57"	106.00'	66.82'	N. 16° 12' 17" W.	65.72'
C10	36° 06' 57"	50.00'	31.52'	N. 16° 12' 17" W.	31.00'
C11	36° 10' 33"	50.00'	31.57'	N. 16° 10' 29" W.	31.05'
C12	12° 31' 32"	106.00'	23.17'	N. 27° 59' 59" W.	23.13'
C13	23° 39' 01"	106.00'	43.75'	N. 09° 54' 43" W.	43.44'
C14	156° 01' 03"	43.00'	117.09'	N. 13° 50' 40" E.	84.12'
C15	10° 23' 23"	102.00'	18.50'	N. 03° 20' 30" W.	18.47'
C16	25° 43' 34"	102.00'	45.80'	N. 21° 23' 58" W.	45.41'
C17	36° 06' 57"	50.00'	31.52'	N. 16° 12' 17" W.	31.00'
C18	24° 04' 02"	43.00'	18.06'	N. 75° 01' 39" W.	17.93'
C19	118° 44' 06"	43.00'	89.11'	N. 03° 37' 35" W.	74.00'
C20	118° 44' 06"	43.00'	89.11'	N. 64° 53' 29" W.	74.00'
C21	24° 03' 19"	43.00'	18.05'	N. 06° 30' 14" E.	17.92'
C22	36° 06' 58"	50.00'	31.52'	N. 16° 12' 17" W.	31.00'
C23	11° 57' 38"	102.00'	21.29'	N. 04° 07' 38" W.	21.25'
C24	24° 09' 18"	102.00'	43.00'	N. 22° 11' 07" W.	42.68'
C25	38° 33' 04"	43.00'	28.93'	N. 67° 47' 08" W.	28.39'
C26	104° 15' 04"	43.00'	78.24'	N. 03° 36' 56" E.	67.88'
C27	90° 53' 47"	43.00'	68.22'	N. 78° 48' 38" W.	61.29'
C28	51° 53' 38"	43.00'	38.95'	N. 07° 24' 56" W.	37.63'
C29	36° 06' 57"	24.00'	15.13'	N. 16° 12' 17" W.	14.88'
C30	53° 52' 23"	40.00'	37.61'	N. 61° 11' 57" W.	36.24'
C31	07° 36' 50"	92.00'	12.23'	N. 38° 04' 10" W.	12.22'
C32	30° 13' 05"	92.00'	48.52'	N. 56° 59' 08" W.	47.96'
C33	16° 02' 28"	92.00'	25.76'	N. 80° 06' 54" W.	25.67'
C34	37° 19' 40"	40.00'	26.06'	N. 73° 12' 02" E.	25.60'
C35	127° 19' 40"	43.00'	95.56'	S. 61° 47' 58" E.	77.07'
C36	127° 19' 40"	43.00'	95.56'	S. 65° 31' 42" W.	77.07'
C37	17° 51' 47"	40.00'	12.47'	N. 59° 44' 22" W.	12.42'
C38	19° 27' 52"	40.00'	13.59'	N. 78° 24' 12" W.	13.52'



NUMBER	DIRECTION	DISTANCE
L1	N. 00° 05' 10" E.	20.01'
L2	N. 45° 21' 58" W.	14.70'
L3	N. 35° 05' 48" E.	21.93'
L4	N. 24° 40' 43" W.	58.12'
L5	N. 50° 50' 44" W.	23.89'
L6	N. 01° 54' 48" E.	46.22'
L7	N. 46° 54' 48" E.	14.14'
L8	N. 01° 54' 48" E.	20.00'
L9	N. 43° 05' 12" W.	14.14'
L10	N. 01° 54' 48" E.	105.00'
L11	N. 46° 52' 59" E.	21.22'
L12	S. 43° 08' 49" E.	21.21'
L13	S. 88° 08' 49" E.	56.00'
L14	N. 46° 51' 11" E.	21.21'
L15	N. 01° 51' 11" E.	56.00'
L16	N. 43° 08' 49" W.	21.21'
L17	N. 01° 51' 11" E.	85.00'
L18	N. 46° 51' 11" E.	14.14'
L19	N. 01° 51' 11" E.	20.00'
L20	N. 43° 08' 49" W.	14.14'
L21	N. 01° 51' 11" E.	87.00'
L22	N. 46° 51' 11" E.	21.21'

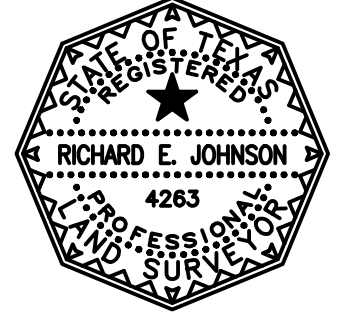
NUMBER	DIRECTION	DISTANCE
L23	N. 01° 51' 11" E.	52.00'
L24	N. 43° 08' 49" W.	21.21'
L25	N. 01° 51' 11" E.	87.00'
L26	N. 46° 51' 11" E.	14.14'
L27	N. 01° 51' 11" E.	20.00'
L28	N. 43° 08' 49" W.	14.14'
L29	N. 01° 51' 11" E.	85.00'
L30	N. 46° 51' 11" E.	21.21'
L31	S. 43° 08' 49" E.	21.21'
L32	S. 88° 08' 49" E.	52.00'
L33	N. 46° 51' 11" E.	21.21'
L34	S. 43° 08' 49" E.	21.21'
L35	S. 88° 08' 49" E.	55.00'
L36	N. 46° 51' 11" E.	14.14'
L37	N. 43° 08' 49" W.	14.14'
L38	N. 48° 19' 48" E.	14.50'
L39	N. 41° 04' 25" W.	13.62'
L40	N. 34° 15' 45" W.	26.87'
L41	N. 46° 51' 11" E.	21.21'
L42	N. 43° 08' 49" W.	21.21'
L43	S. 49° 26' 57" W.	14.77'
L44	N. 40° 33' 03" W.	14.14'

NUMBER	DIRECTION	DISTANCE
L45	N. 46° 51' 41" E.	21.22'
L46	N. 54° 54' 12" W.	25.09'
L47	N. 35° 05' 48" E.	16.45'
L48	N. 28° 47' 43" E.	14.14'
L49	N. 61° 12' 17" W.	26.74'
L50	S. 01° 54' 48" W.	32.49'
L51	S. 01° 54' 48" W.	21.14'
L52	N. 46° 52' 59" E.	21.22'
L53	N. 16° 12' 17" W.	34.88'
L54	N. 16° 12' 17" W.	28.52'
L55	N. 79° 15' 38" W.	21.21'
L56	N. 16° 12' 17" W.	28.52'
L57	N. 10° 44' 22" E.	21.21'
L58	N. 24° 42' 15" E.	16.56'
L59	N. 73° 51' 32" W.	14.41'
L60	N. 43° 08' 49" W.	21.21'
L61	N. 61° 10' 29" W.	17.83'
L62	N. 28° 49' 31" E.	9.07'
L63	S. 46° 52' 07" W.	14.14'
L64	N. 34° 15' 45" W.	16.33'
L65	S. 88° 08' 49" E.	20.02'
L66	N. 41° 10' 06" E.	19.01'
L67	S. 00° 05' 10" W.	30.01'
L68	N. 43° 08' 49" W.	14.14'

NUMBER	DIRECTION	DISTANCE
L69	N. 46° 51' 11" E.	21.21'
L70	N. 43° 08' 49" W.	14.14'
L71	N. 43° 08' 49" W.	14.14'
L72	N. 43° 08' 49" W.	14.14'
L73	N. 43° 08' 49" W.	14.14'
L74	N. 43° 08' 49" W.	14.14'
L75	N. 43° 08' 49" W.	14.14'
L76	N. 43° 08' 49" W.	14.14'
L77	N. 43° 08' 49" W.	14.14'
L78	N. 43° 08' 49" W.	14.14'
L79	N. 43° 08' 49" W.	14.14'
L80	N. 43° 08' 49" W.	14.14'
L81	N. 43° 08' 49" W.	14.14'
L82	N. 43° 08' 49" W.	14.14'
L83	N. 43° 08' 49" W.	14.14'
L84	N. 43° 08' 49" W.	14.14'
L85	N. 43° 08' 49" W.	14.14'
L86	N. 43° 08' 49" W.	14.14'
L87	N. 43° 08' 49" W.	14.14'
L88	N. 43° 08' 49" W.	14.14'

LEGEND:
 * = 1/2" Iron Rod w/ cap inscribed "HR&ASSOC" found. (PMRD/CM)
 • = 1/2" Iron Rod w/ cap inscribed "CHT RPLS 6460" found. (PMRD/CM)
 ○ = 5/8" Iron Rod w/ cap inscribed "COTTON" found. (PMRD/CM)
 ☒ = 1/2" Iron Rod w/ cap inscribed "OJD ENG" Set
 CCF = County Clerk's File, Official Public Records of Lubbock County, Texas.
 DRE = Drainage Easement
 OPRRLCT = Official Public Records of Lubbock County, Texas.
 PMRD/CM = Physical Monument of record dignity/controlling monument
 POB = Point of Beginning
 ROW = Right-of-Way
 TPE-SPEC = Transformer Pad Easement-South Plains Electric Co-op.
 UUE = Underground Utility Easement
 UUE-SPEC = Underground Utility Easement-South Plains Electric Co-op.
 WLE = Water line easement

STATE OF TEXAS : KNOW ALL MEN BY THESE PRESENTS,
 COUNTY OF COLLINGSWORTH : that I, Richard E. Johnson, Registered Professional Land Surveyor, do hereby certify that I did cause to be surveyed on the ground the tract of land shown on this plat and the corner monuments indicated hereon were properly placed under my supervision.
 IN WITNESS THEREOF, my hand and seal, this the 8th day of December, A.D., 2022.



Richard E. Johnson
 Richard E. Johnson
 Registered Professional Land Surveyor #4263

Iron Horse Addition
 Lots 177 thru 372 and Tracts E-G
 Section 32, Block A-K, G. Ry. Co. Survey, Lubbock County, Texas.

SCALE: 1" = 100' APPROVED BY: DRAWN BY: REJ
 DATE: 3/1/22 CHECKED BY:

OJD Engineering, LLC
 Consulting Engineers & Surveyors
 P.O. Box 543 2420 Lakeview Drive 328 E. Hwy 62 Unit #1
 Wellington, TX 79095 Amarillo, TX 79109 Wolfforth, TX 79382
 806-447-2503 806-352-7117 806-791-2300
 Firm No. 10090900 Firm No. 10090900 Firm No. 10090900

