

# OVERLOOK WEST, LOTS 1 THROUGH 206 AND TRACT "A", AN ADDITION TO THE CITY OF WOLFORTH, LUBBOCK COUNTY, TEXAS

(PARTY INDEXED FORWARD IN COUNTY CLERK'S FILE NUMBER 438346)  
OF THE OFFICIAL PUBLIC RECORDS OF LUBBOCK COUNTY, TEXAS



VICINITY MAP  
NOT TO SCALE

- NOTE:
1. HEAVY LINES INDICATE PLAT LIMITS
  2. ALL STREETS, ALLEYS AND EASEMENTS WITHIN PLAT LIMITS ARE HEREBY DEDICATED.
  3. NO BUILDING PERMIT SHALL BE ISSUED ON ANY SURVEY CERTIFICATE THAT IS NOT IN ACCORDANCE WITH THE CITY OF WOLFORTH CODE OF ORDINANCES.
  4. ALL UTILITY SERVICES SHALL BE IN ACCORDANCE WITH THE "UNDERGROUND UTILITIES POLICY STATEMENT" BY THE CITY COUNCIL OF THE CITY OF WOLFORTH, TEXAS AND THE CITY OF WOLFORTH, TEXAS.
  5. THE CITY OF WOLFORTH, TEXAS HAS REVIEWED THIS PLAT AND HAS DETERMINED THAT THE PLAT IS IN ACCORDANCE WITH THE CITY OF WOLFORTH, TEXAS CODE OF ORDINANCES.
  6. THE CITY OF WOLFORTH, TEXAS HAS REVIEWED THIS PLAT AND HAS DETERMINED THAT THE PLAT IS IN ACCORDANCE WITH THE CITY OF WOLFORTH, TEXAS CODE OF ORDINANCES.
  7. ALL EASEMENTS HEREBY GRANTED SHALL ENTITLED THE CITY OF WOLFORTH, TEXAS TO THE RIGHT TO REMOVE, REPAIR OR REPLACE ANY UNDERGROUND UTILITY SERVICES TO AND ON TRACTS LOCATED BY THIS PLAT. SUCH EASEMENTS SHALL BE CONTAINED IN THE PUBLIC RIGHT-OF-WAY AND PUBLIC UTILITY EASEMENT MAPS AND NOT WITHIN AN EASEMENT INDICATED BY THIS PLAT. SUCH EASEMENTS SHALL BE AT THE EXPENSE OF THE ENTITY REQUESTING SUCH EASEMENTS.
  8. ALL EASEMENTS HEREBY GRANTED SHALL ENTITLED THE CITY OF WOLFORTH, TEXAS TO THE RIGHT TO REMOVE, REPAIR OR REPLACE ANY UNDERGROUND UTILITY SERVICES TO AND ON TRACTS LOCATED BY THIS PLAT. SUCH EASEMENTS SHALL BE CONTAINED IN THE PUBLIC RIGHT-OF-WAY AND PUBLIC UTILITY EASEMENT MAPS AND NOT WITHIN AN EASEMENT INDICATED BY THIS PLAT. SUCH EASEMENTS SHALL BE AT THE EXPENSE OF THE ENTITY REQUESTING SUCH EASEMENTS.
  9. THIS PLAT IS SUBJECT TO THE CITY OF WOLFORTH, TEXAS CODE OF ORDINANCES AND THE CITY OF WOLFORTH, TEXAS CODE OF ORDINANCES.
  10. UNDERGROUND UTILITY EASEMENTS ALONG RIGHT-OF-WAY LINES SHALL ALLOW FOR THE INSTALLATION OF UNDERGROUND UTILITY SERVICES AND SHALL BE LOCATED AT THE DISCRETION OF THE CITY OF WOLFORTH, TEXAS.
  11. VEHICULAR ACCESS:

12. DRE - DRAINAGE EASEMENT.
13. SEE - SEWER LINE EASEMENT.
14. ULE - UNDERGROUND UTILITY EASEMENT (SEE NOTE 10).
15. CDM - CONTROL, MAINTENANCE, AND REPAIR OF RECORD DIGNITY.
16. CCM - COUNTY CLERK'S PLAT AND RECORD DIGNITY.
17. M&D - COUNTY CLERK'S PLAT AND RECORDATION NUMBER.
18. COORDINATE SYSTEM OF 1983 (NAD 83), TEXAS NORTH CENTRAL ZONE, AS DETERMINED BY THE NATIONAL BUREAU OF SURVEYING AND MAPPING, INC. (NBSM).
19. THESE PLAT LIMITS CONTAIN 37,332 ACRES.
20. THE TOTAL AREA OF THESE PLAT LIMITS ARE ON A SEPARATE DOCUMENT OF SAME DATE HEREWITH.

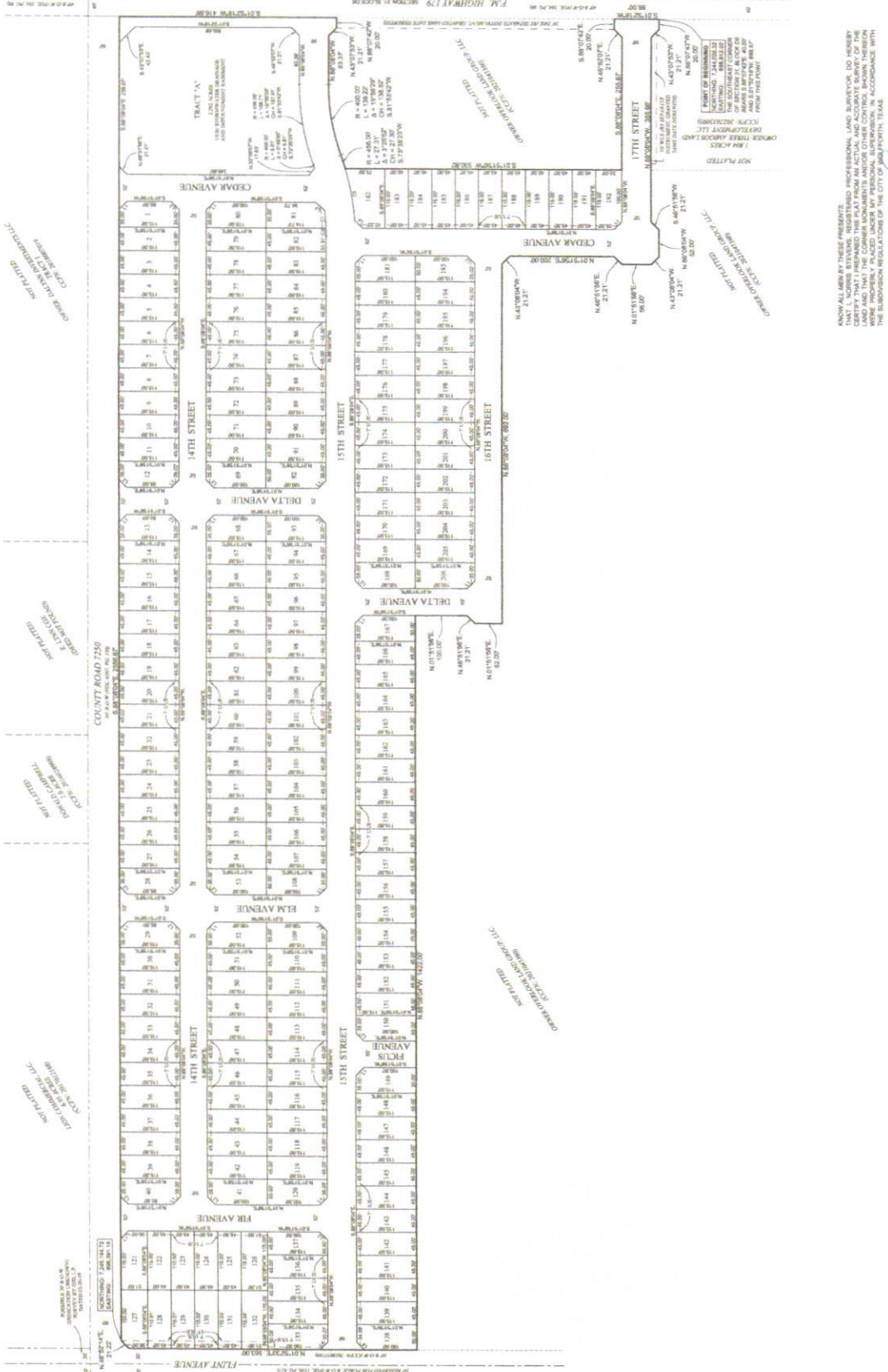
APPROVED THIS 18<sup>th</sup> DAY OF April 20 22  
BY THE CITY COUNCIL OF THE CITY OF WOLFORTH, TEXAS

ATTEST:  
*[Signature]*  
CITY CLERK

*[Signature]*  
REGISTERED PROFESSIONAL LAND SURVEYOR #4383  
LUBBOCK, TEXAS  
SURVEYED AUGUST 17, 2022



REGISTERED PROFESSIONAL LAND SURVEYOR #4383  
LUBBOCK, TEXAS  
SURVEYED AUGUST 17, 2022



LINE	SECTION	LENGTH	BEARING	AREA	AREA	AREA	AREA
L1	8.07250°E	21.27					
L2	8.07180°W	21.27					
L3	8.07250°E	21.27					
L4	8.07180°W	21.27					
L5	8.07250°E	21.27					
L6	8.07180°W	21.27					

CURVE	BACK SIGHT	ARC LENGTH	CHORD LENGTH	CHORD BEARING
C1	450.00'	73.17'	38.7'	8.871450°W
C2	450.00'	73.17'	38.7'	8.871450°W
C3	450.00'	73.17'	38.7'	8.871450°W