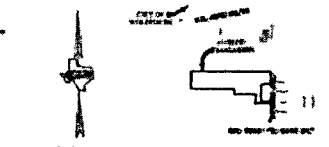
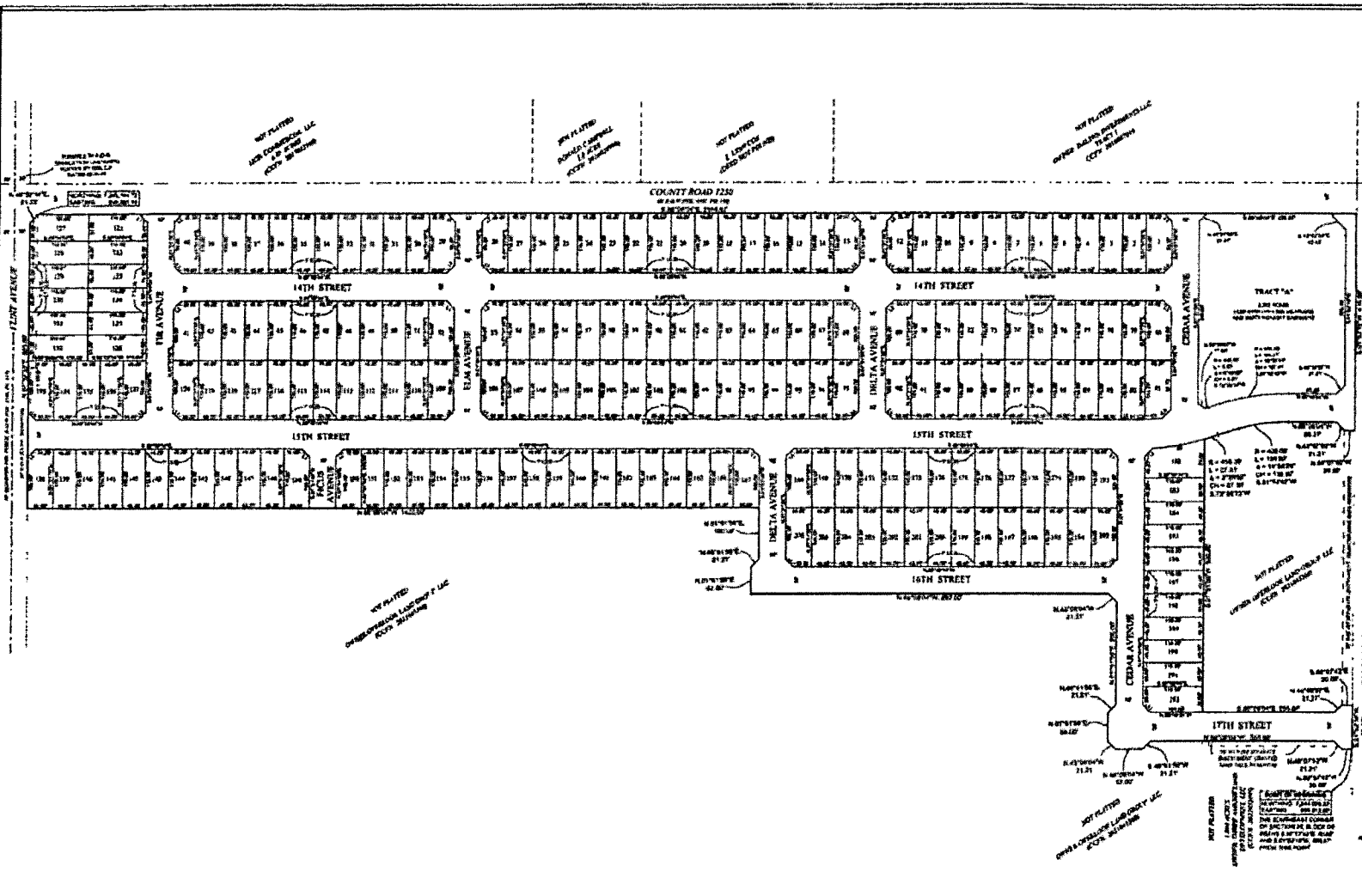


OVERLOOK WEST, LOTS 1 THROUGH 206 AND TRACT "A", AN ADDITION TO THE CITY OF WOLFORTH, LUBBOCK COUNTY, TEXAS

QUANTITY AND DIMENSIONS OF COUNTY CLERK'S FILE NUMBER 123338
OF THE OFFICIAL PUBLIC RECORDS OF LUBBOCK COUNTY, TEXAS



VICINITY MAP
NOT TO SCALE



1. NEIGHBORING INDICATE PLAT LIMITS.
2. ALL EASEMENTS, ALLEYS AND EASEMENTS WITHIN PLAT LIMITS ARE HEREIN SPECIFICALLY UNLESS REPEATED OTHERWISE.
3. THIS PLAT SHALL BE ASSUMED ON ANY SURVEY CERTIFICATE THAT IS NOT IN ACCORDANCE WITH AN APPROVED FINAL PLAT AS A MAP OF RECORD IS PROVIDED BY THE CITY CLERK'S OFFICE OF THE CITY OF WOLFORTH, TEXAS.
4. ALL UTILITY EASEMENTS SHALL BE IN ACCORDANCE WITH THE SUBSURFACE UTILITIES PROTECTION ACT BY THE CITY CLERK'S OFFICE OF THE CITY OF WOLFORTH, TEXAS AND THE PROVISIONS OF SECTION 123.005 OF THE CITY OF WOLFORTH CODE OF ORDINANCES.
5. ANY RELOCATION OR REVISION OF EASEMENTS - UTILITIES SHALL BE THE RESPONSIBILITY OF THE PERSONS TO WHOM THE EASEMENTS ARE GRANTED.
6. ALL EASEMENTS, ALLEYS AND EASEMENTS WITHIN PLAT LIMITS ARE HEREIN SPECIFICALLY UNLESS REPEATED OTHERWISE.
7. ALL EASEMENTS, ALLEYS AND EASEMENTS WITHIN PLAT LIMITS ARE HEREIN SPECIFICALLY UNLESS REPEATED OTHERWISE.
8. ALL EASEMENTS, ALLEYS AND EASEMENTS WITHIN PLAT LIMITS ARE HEREIN SPECIFICALLY UNLESS REPEATED OTHERWISE.
9. ALL EASEMENTS, ALLEYS AND EASEMENTS WITHIN PLAT LIMITS ARE HEREIN SPECIFICALLY UNLESS REPEATED OTHERWISE.
10. ALL EASEMENTS, ALLEYS AND EASEMENTS WITHIN PLAT LIMITS ARE HEREIN SPECIFICALLY UNLESS REPEATED OTHERWISE.
11. ALL EASEMENTS, ALLEYS AND EASEMENTS WITHIN PLAT LIMITS ARE HEREIN SPECIFICALLY UNLESS REPEATED OTHERWISE.
12. ALL EASEMENTS, ALLEYS AND EASEMENTS WITHIN PLAT LIMITS ARE HEREIN SPECIFICALLY UNLESS REPEATED OTHERWISE.
13. ALL EASEMENTS, ALLEYS AND EASEMENTS WITHIN PLAT LIMITS ARE HEREIN SPECIFICALLY UNLESS REPEATED OTHERWISE.
14. ALL EASEMENTS, ALLEYS AND EASEMENTS WITHIN PLAT LIMITS ARE HEREIN SPECIFICALLY UNLESS REPEATED OTHERWISE.
15. ALL EASEMENTS, ALLEYS AND EASEMENTS WITHIN PLAT LIMITS ARE HEREIN SPECIFICALLY UNLESS REPEATED OTHERWISE.
16. ALL EASEMENTS, ALLEYS AND EASEMENTS WITHIN PLAT LIMITS ARE HEREIN SPECIFICALLY UNLESS REPEATED OTHERWISE.
17. ALL EASEMENTS, ALLEYS AND EASEMENTS WITHIN PLAT LIMITS ARE HEREIN SPECIFICALLY UNLESS REPEATED OTHERWISE.
18. ALL EASEMENTS, ALLEYS AND EASEMENTS WITHIN PLAT LIMITS ARE HEREIN SPECIFICALLY UNLESS REPEATED OTHERWISE.
19. ALL EASEMENTS, ALLEYS AND EASEMENTS WITHIN PLAT LIMITS ARE HEREIN SPECIFICALLY UNLESS REPEATED OTHERWISE.
20. ALL EASEMENTS, ALLEYS AND EASEMENTS WITHIN PLAT LIMITS ARE HEREIN SPECIFICALLY UNLESS REPEATED OTHERWISE.

LINE	OF BEARS	DISTANCE
13	8.4779	21.27
14	8.4779	21.27
15	8.4779	21.27
16	8.4779	21.27
17	8.4779	21.27
18	8.4779	21.27
19	8.4779	21.27
20	8.4779	21.27

CURVE	ANGLE	ARC LENGTH	CHORD BEARING	CHORD LENGTH	CHORD BEARING
C1	45.00	30.00	212.13	30.00	337.5000
C2	45.00	30.00	212.13	30.00	337.5000

I, **Lynn J. Shaw**, Registered Professional Land Surveyor No. 10877, do hereby certify that I prepared this plat from an actual and accurate survey of the land and that the corner monuments and other control known to me were properly placed under my personal supervision in accordance with the Subsurface Utilities Protection Act of the City of Wolforth, Texas.

Surveyed and approved by me:
Lynn J. Shaw
Registered Professional Land Surveyor No. 10877
Lubbock, Texas



APPROVED THIS 24th DAY OF April, 2022
BY THE CITY CLERK OF THE CITY OF WOLFORTH, TEXAS:
Dana Jamison
City Clerk

REGISTERED PROFESSIONAL LAND SURVEYOR NO. 10877

AMD CIVIL ENGINEERING & LAND SURVEYING
1011 W. 14th Street, Suite 200
Lubbock, Texas 79402
Phone: 806-799-1234
Fax: 806-799-1234