

City Council Meeting—
December 2024



Natural Area Management Planning: City of Wilsonville



Background

The Natural Area Management Plan:

- Implements Objective 3.10 (maintain and improve Wilsonville's natural resources) of the Parks and Recreation Master Plan
- Incorporates the objectives of the Boeckman Creek Restoration Plan
- Supports the goals and actions of the Urban Forest Management Plan
- Implements the objectives and practices of the Integrated Pest Management Plan

Objectives and Guiding Principles



Create an over-arching management plan and recommend management objectives for the City's natural areas



Recommend management activities based on proven best practices and IPM practices



Promote long-term maintenance and enhancement of the City's natural areas



Recognize that natural spaces are a valuable resource for community resilience, public engagement/education, stewarding healthy habitats



Engage with the public to create an inclusive and transparent process



Recommend opportunities community engagement in management of the City's natural areas



Promote community appreciation for natural areas

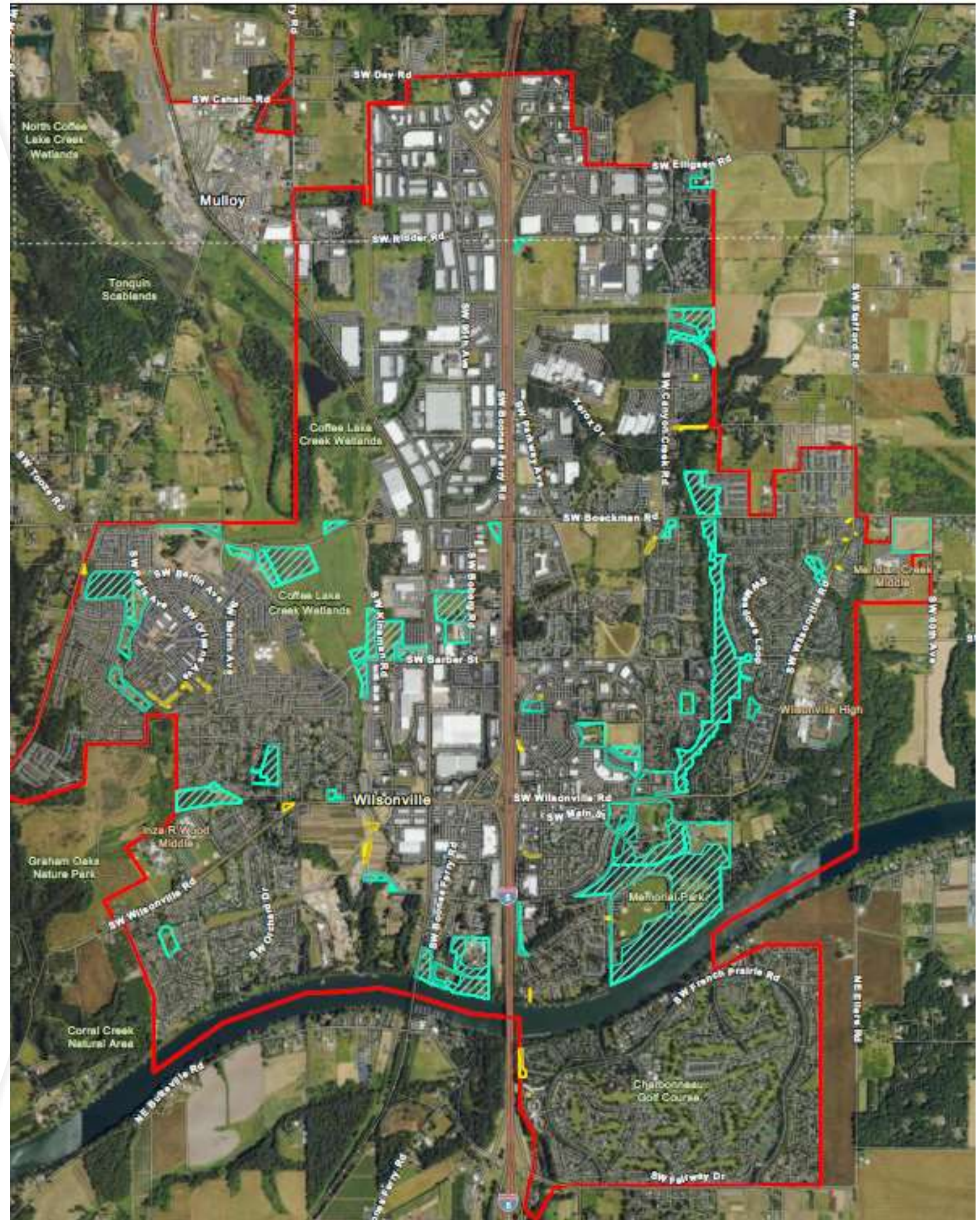
Notable Issues/Threats

- Climate change
 - Wildfire
 - Extreme weather
 - Invasive species and diseases
 - Emerald ash borer
 - Mediterranean oak borer
 - Sudden oak death
- Noxious/invasive plants
- Human and other impacts
 - Habitat fragmentation, development
 - Recreation
 - Pollution/runoff
- Encroachment (by invasive species or by urban growth)



Catalog of Natural Areas

- Larger than 0.5 acres
 - City-owned tax lots
 - Not included in the catalog:
 - Privately owned property
- Property owned by other entities such as Metro and TVWD
- Land use/management type: hybrid, urban, commercial/industrial, residential



Prioritization Framework

Proposed Natural Resource Function/Value Scoring System:

3 points

- Presence of fish bearing stream
- Presence of state or federally listed species (besides salmon)
- Overlap with Significant Resource Overlay Zones (SROZ) (City of Wilsonville, 2001)
- Overlap with ODFW Strategy Habitats
- Terrestrial Crucial Habitat Ranking 1 or 2 (ODFW, 2016)
- Aquatic Crucial Habitat Ranking of 1 or 2 (ODFW, 2016)
- Existing capital projects or restoration activities

2 points

- Presence of non-fish bearing stream
- Terrestrial Crucial Habitat Ranking of 3 or 4 (ODFW, 2016)
- Aquatic Crucial Habitat Ranking of 3 or 4 (ODFW, 2016)
- Plans for restoration or future capital projects
- Overlap with Conservation Opportunity Area (ODFW, 2016)
- Overlap with Priority Wildlife Conservation Areas (PWCA) (ODFW, 2016)

1 point

- Terrestrial Crucial Habitat Ranking of 5 or 6 (ODFW, 2016)
- Aquatic Crucial Habitat Ranking of 5 or 6 (ODFW, 2016)
- Active volunteer or stewardship activities

High Natural Resource Function/Value = high priority
Time and effort needed is lower



Low Natural Resource Function/Value = low priority
Time and effort needed is very high



Prioritization Framework

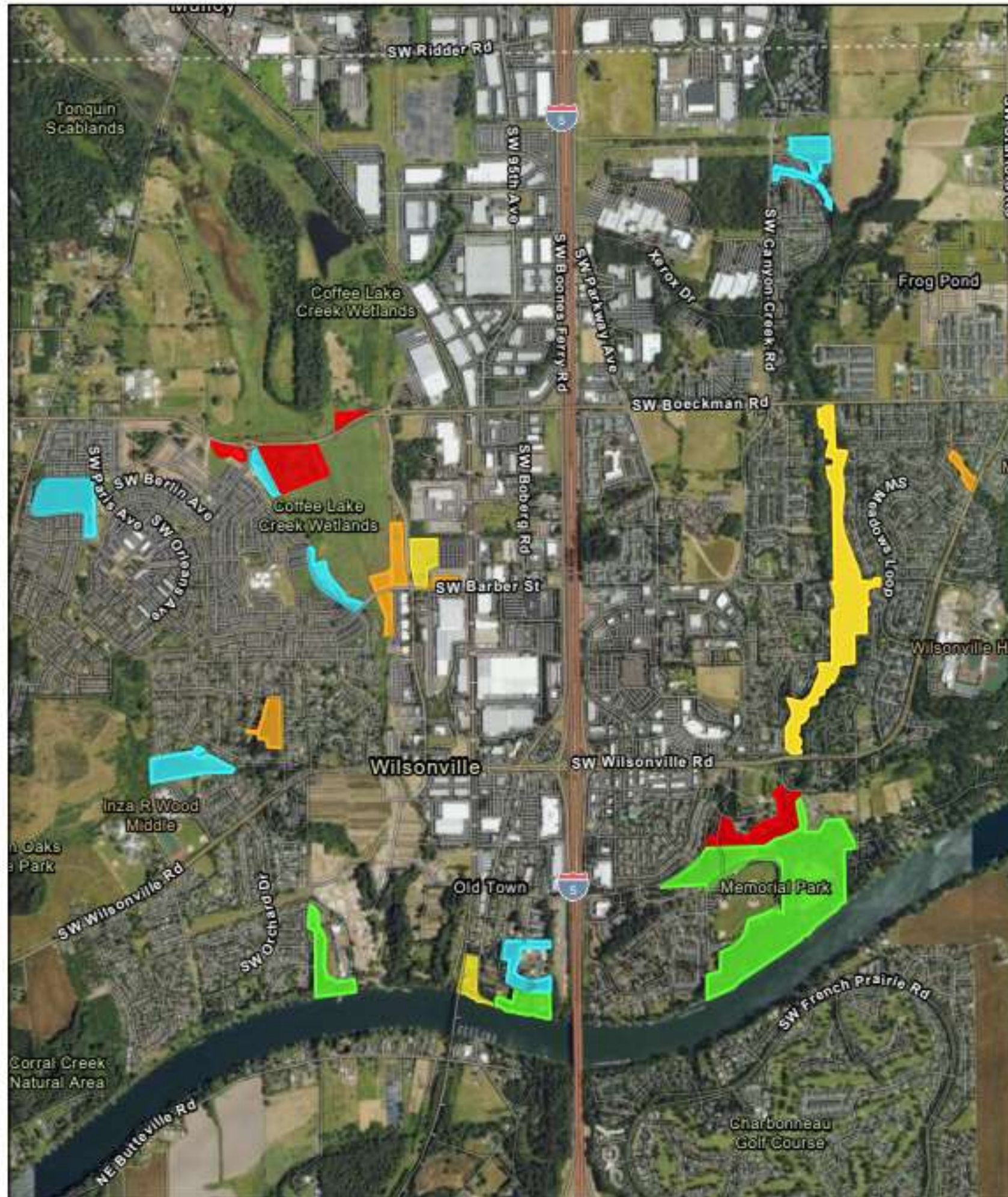
- Habitat condition assessments and delineations:
- Habitat assessments will help determine highest priority natural areas and identify management needs
 - Parameters
 - Noxious and/or exotic species cover
 - Native species cover
 - Total species richness
 - Canopy cover
- Habitat delineations will help identify best management practices based on habitat type
 - Examples include, mixed conifer/deciduous forest, oak woodland/oak savannah, wetland-emergent/scrub shrub

Survey Findings: City Wide

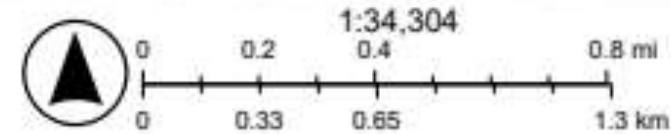
	Combined Native Stem count	Canopy Cover	Combined Native Cover	Noxious Weed Cover	Species Richness	Site Score
Memorial Park	15.4	55.0	24.1	35.6	9.7	0.73
Boeckman Creek	15.6	65.9	28.4	33.1	6.6	-0.56
Kinsman Road	2.8	3.1	11.9	12.4	7.1	-2.75
Boones Ferry Park	10.4	51.5	6.4	14.8	9.2	-1.25
Coffee Lake Wetlands	3.3	2.3	5.8	74.6	2.5	-9
Murase Plaza	5.3	25.3	8.6	55.7	9.3	-5
Edelweiss Park	71.7	70.0	32.2	14.3	11.5	5.33
Tivoli Park	11.0	2.5	19.8	3.9	13.5	4
Willow Creek	10.5	0.0	14.3	57.4	8.5	-4
Oulanka Park	3.3	0.0	9.6	54.8	5.5	-7
Park at Merryfield	14.5	84.0	62.9	9.3	11.5	8
Tranquil Park	20.0	89.0	14.3	74.8	10.5	0
Canyon Creek Park	51.3	42.5	29.1	20.6	13.3	8
Arrowhead Park	39.8	77.5	54.3	28.5	8.3	6

Color Legend				
Bottom/0 Quartile	25%/2nd Quartile	Median Quartile	75%/3rd Quartile	Top/4th Quartile

City of Wilsonville Natural Areas-Habitat Scores



11/26/2024



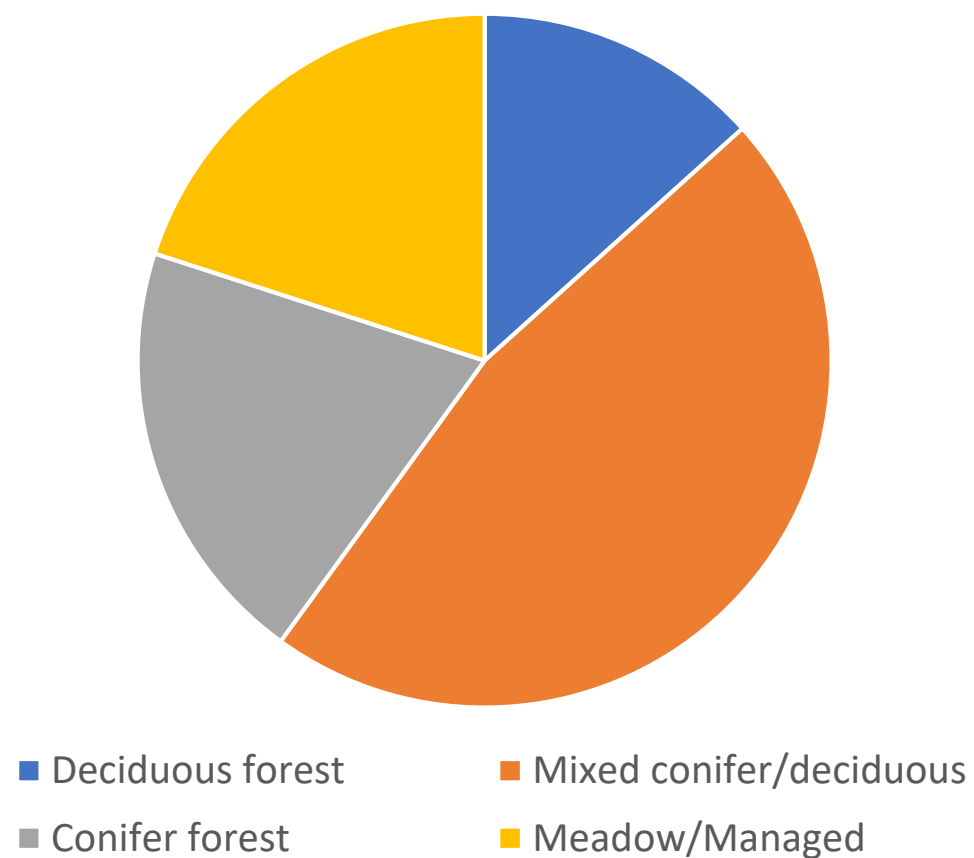
Source: Esri, USDA FSA, Source: Esri, Maxar, Earthstar Geographics, and the GIS User Community, Oregon Metro, Oregon State Parks, State of Oregon GEO, Esri, TomTom, Garmin, SafeGraph, GeoTechnologies, Inc, METI/NASA, USGS, Bureau of Land Management, EPA, NPS, US Census Bureau, USDA, USFWS

Survey Findings Memorial Park

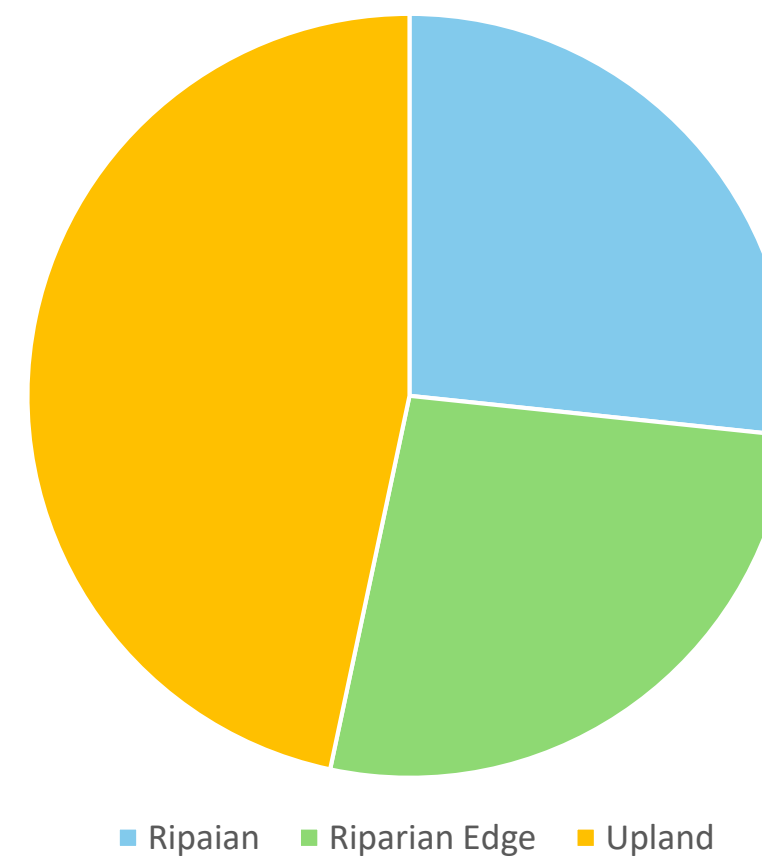
# Trees (stem count)		# Shrubs (stem count)		% Bare	Tree richness	Shrub richness	Canopy cover	Site Score
Native	Non N	Native	Non N					
6.9	6.4	8.5	29.3	0.0	2.6	2.5	60.7	0.73

% Graminoid		% Forb		% Shrub		% Bare	Graminoid + forb richness	Noxious weed cover
Native	Non N	Native	Non N	Native	Non N			
1.1	14.8	13.4	21.9	9.6	14.6	32.1	4.6	35.6

Habitat Types



Riparian Habitat



Community Outreach Objectives

- Goal: Provide open and transparent communication to community members about the project process, goals, and outcomes
- Objectives
 - Identify local and non-local individuals, community groups, organizations, and other entities that may have connections to the project area
 - Create communication pathways for people to be able to share their thoughts and opinions during the project
 - Online survey, In-person events (e.g. Earth Day/Arbor Day), social media updates, Let's Talk Wilsonville project page



Outreach Strategies

- Let's Talk Wilsonville
 - Publish general updates on the project
 - Gateway for community to submit questions and survey responses
 - Contact info for City and the ACFM Project Manager
- *Boones Ferry Messenger*
 - Announce upcoming public meetings
 - Press releases with project updates
- Social Media: City of Wilsonville's Instagram, Facebook
 - Announce upcoming public meetings
 - Highlight events and document the process of creating the NAMP



Planning Objectives and Approach

Complete:

- Review existing management plans, laws, regulations
- Identify and compile existing data related to natural resource value and function of natural areas
- Develop site catalog and prioritization frameworks
- Conduct vegetation assessments and habitat delineations
- Earth Day event, Boones Ferry Messenger article

Ongoing/Future:

- Finish analysis of field data
- Host townhall
- Develop management needs and key objectives for habitat types
- Identify key populations or individuals that are at risk from pests and/or disease and recommend preventative/reactive strategies
- Develop final Natural Area Management Plan



Deliverables

- Prioritization framework
- Catalog of all City natural areas
- Habitat delineations of all City natural areas
- Maps of up to 20 high priority natural areas
- Robust list of key community partners, summaries of outreach activities, and data on public input
- 2-3 press releases announcing the project, meetings, and project updates
- LTW Featured Project Page
- Management recommendations and strategies based on the data that is collected and compiled
- List of priority areas for reduction of wildlife hazards