

# The Heart Of The City

*28925 SW Boberg Road, Wilsonville, OR 97070*

## Our Mission Statement

*“Love and Serve the Whole Person  
and the Whole Community.”*

# Who and How We Serve:

We serve anyone who walks through the door regardless of race, sexuality, religion, color, gender, gender expression, age, national origin, disability, marital status, sexual orientation, or military status in any of its activities or operations.

Unsheltered, Youth, Seniors, Single-Parent Households, Financial Instability, Special populations

## Snap Shot:

Number of individuals and household served in 97070: **445**

### Events:

- GU4S- served **330 students**
- Share The Warmth- **collected 1000 items**

### Community Engagement:

- Wilsonville Community Partnership Meetings, **a partnership HoC initiated**
- Marion County Community Partners

## Our Programs:

- Client Services
- Immediate Community Supplies
- Community Outreach
- Financial Advisor Services
- Low-Cost Counseling Partnership
- Volunteer Program

# The purpose of the Heart of the City's Client Services Accessibility Project |

## CEP funds will support the following:

- To provide community members dignity, accessibility, convenience, and efficiency when they are at their most vulnerable when they come work with us
- Enhance technological resources to meet growing program needs and provide real-time support for our clients. It allows us the ability to research programs with the client or show them how to complete documentation
- Create a welcoming environment for clients, with sitting area that is calming, inviting, and sanitary

**Purpose of Items, Costs, and  
Place of Purchase**

# Locker System - Smart Mailboxes:

- **Purpose:** Provide secure after-hours access for clients to pick up rental assistance checks and mail.
- **Barriers:** Community members cannot get to the office during business hours
- **Benefits:** Increases accessibility and convenience for clients

## Items to purchase:

- 4 WeHere Mailbox with Electronic Lock, Wall Mount Mailbox from Amazon - \$99.99 = \$400
- WeHere Wi-Fi Bridge (W100) & Door Sensor - Amazon = \$69.99



**Cost: 469.99**

## iPads:

**Purpose:** Increase availability of technology for clients who need to apply for resources, but needs assistance to do it, giving accessibility and real time services

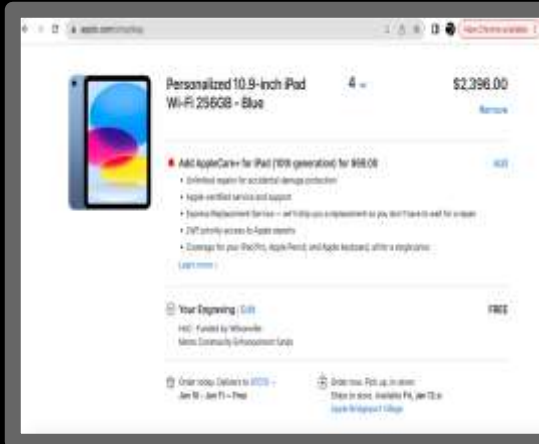
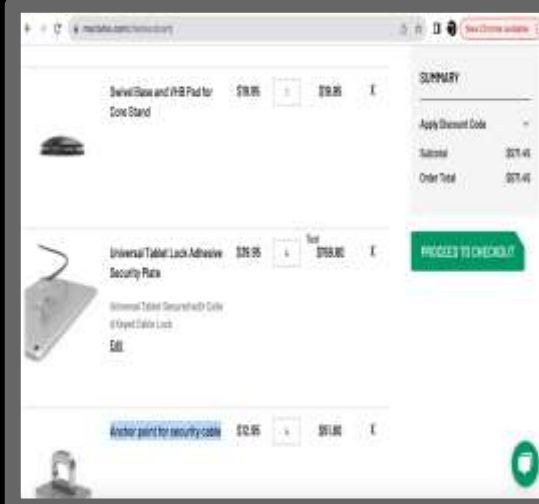
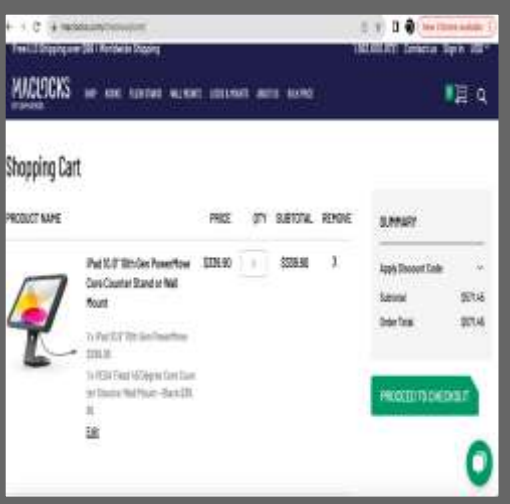
**Barriers:** Language, Mental Health, Addiction, Limited Access to computers, Elderly creating limitations to completing paperwork to get services/support

**Benefits:** Enhances client services, enables mobile data entry, and supports partnerships with other organizations.

## Items to purchase:

- 2 iPad 10 generation for Client Services from Apple Store for \$599.00 = \$1,198.00
- iPad10 generation for Events from Apple Store = \$599.00
- iPad 10 generation for Inventory from Apple Store for \$599.00
- Pad 10.9" 10th Gen PowerMove Core Counter Stand for security of iPad from Maclocks by Compulocks for \$399 with a Swivel Base and VHB Pad for Core Stand at \$19.95 =\$418.95
- 4 Universal Tablet Lock Adhesive Security Plate for security iPads from Maclocks by Compulocks for \$39.95 = \$159.80
- 4 Anchor point for security cable for security iPads from Maclocks by Compulocks \$12.95 = \$51.80
- 2 iPad Pencils Apple Store for \$79.00 each =\$158.00
- 2 Magic Keyboard Folio for iPad from Apple Store- at \$249.00 each=\$498.00

# Total for Ipad and Security Devices



**Cost: \$3,682.55**



## Technology (Desktops, Laptop, and Printer):

- **Purpose:** Expand technology for staff and volunteers, allowing for better client services, research, and administrative tasks.
- **Barriers:** Clients overwhelmed needing assistance to complete paperwork, limited computers
- **Benefits:** Increases efficiency, real time side by side support with client, researching resources while assisting clients, event planning simultaneously while attending to client care, and volunteers have access to more than one computer to support programs

## Items to purchase:

- **15-inch MacBook Air with M2 chip -Inventory/Events, Apple Store = \$1,499.00**
- **Mac Computer -New Staff, Apple Store = \$2,299.00**
- **Mac Computer -Volunteer, Apple Store = \$2,299.00**
- **Brother Wireless Laser All-In-One Color Printer, Office Depot = \$699.99**
- **2 Brother Black Toner Cartridge, Office Depot for \$123.49 = \$246.98**
- **2 Brother Cyan Toner Cartridge, Office Depot for \$231.99 = \$463.98**

Apple Store

**Blue iMac** 2 **\$4,598.00**

Pay 0% APR for 12 months

**Add AppleCare+ for iMac (M2) for \$169.00**

Order today, Delivery in 3-5 days - **Jan 23 - Jan 24 - Free**

Apple Store

Delivery based on \$1000

Your pickup store: **8315 SW JACK BURKE BLVD UNIT C WILSONVILLE, OR 97150**

**AppleCare+ Business** \$122.49/mo

**3-Year Protection Plan** \$189.99

**Estimated Total \$1,005.47**

**Cost: \$8,207.95**

Apple Store

**15-inch MacBook Air with M2 chip - Midnight** 1 **\$1,499.00**

Pay 0% APR for 12 months

**Add AppleCare+ for 15-inch MacBook Air (M2) for \$229.00**

Order today, Delivery in 3-5 days - **Tue, Jan 9 - Free**

Apple Store

**MacBook Core i7 16GB** \$122.49/mo

**MacBook Core i7 16GB** \$122.49/mo

**Estimated Total \$1,005.47**

**Secure Checkout**

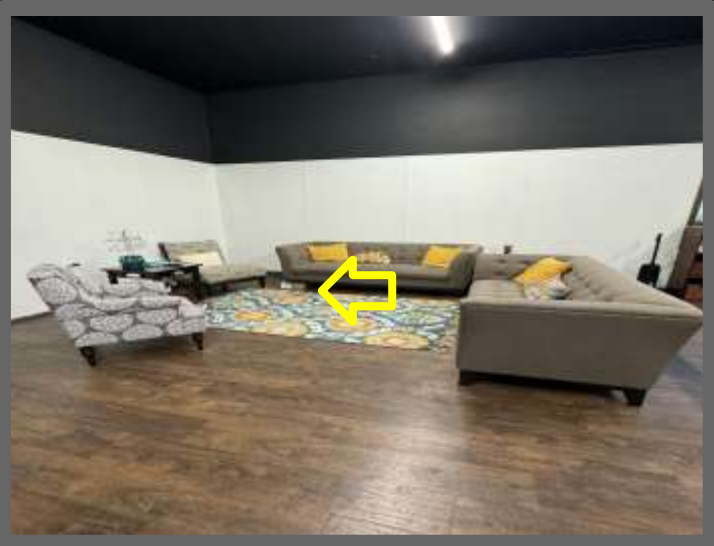
# Sitting Area Furniture:

- **Purpose:** Create a welcoming environment for clients to rest and engage with staff in a comfortable space.
- **Barrier:** Clients come in stressed and need a places that is inviting and calming, stressed clients cause stress environments. Current couch is broken. An area without furniture is more clinical feeling, less communal, and lack of sitting space
- **Benefits:** Current situation, coach is broken, it is part of the waiting room. It helps when clients are comfortable waiting, Promotes dignity and a sense of community, giving a home like environment. It's used by parents with kids, people looking through clothing items, or people needing to rest while commuting.

# Cost: \$1,599.99

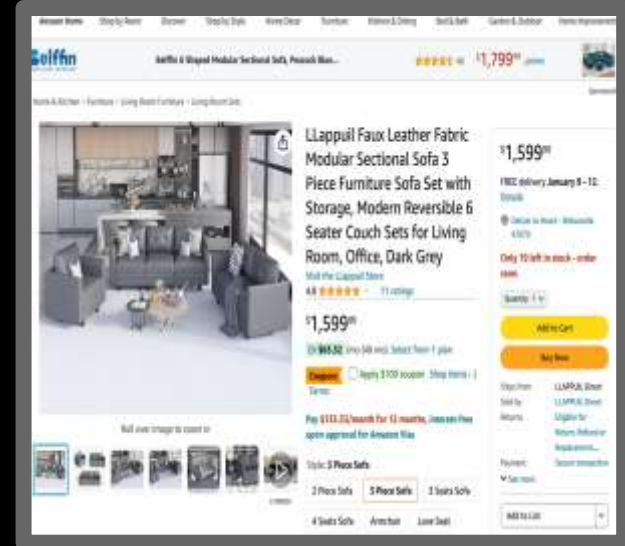
## Current Couch:

- Broken leg on a box and fabric, older and needing replaced



## Items to purchase:

- LLappuil Faux Leather Fabric Modular Sectional Sofa 3 Piece from Amazon- \$1599.99



**Total Budget: \$12,376.48**

**What kind of ongoing maintenance needs  
and costs might the project require**

# Ongoing Maintenance Needs

## Printing Supplies:

- **Ink Costs:** Ongoing costs for printer ink are included in the budget allocated for supplies under the Heart of the City.
- **Financial Coverage:** The Heart of the City has accounted for the continual financial obligation of ink costs within its overall budget.

## Technology Setup and Maintenance:

- **Responsibility:** Grace Chapel, our sponsor, will manage the setup and programming of all technology devices.
- **Staff Expertise:** Grace Chapel has dedicated staff who will provide ongoing maintenance for the technology devices.
- **Volunteer Assistance:** Grace Chapel will mobilize volunteers to assist with the setup of technology and furniture.



# Ongoing Maintenance Needs

## Smart Lock Mailboxes:

- **Equipment Setup:** Grace Chapel staff will assist with installing the equipment related to smart lock mailboxes.
- **App Usage:** The app associated with the smart lock mailboxes is deemed to be included as part of the service, eliminating any anticipated ongoing costs.

## Furniture Setup and Maintenance:

- **Setup Assistance:** Grace Chapel staff will facilitate furniture setup upon delivery.
- **Volunteer Support:** Volunteers from Grace Chapel will be involved in the setup process, ensuring efficient installation.

# Questions?

*Time for Q&A!*



*Loving and  
Serving the  
Whole Person  
and the Whole  
Community*

heart  
of the  
city