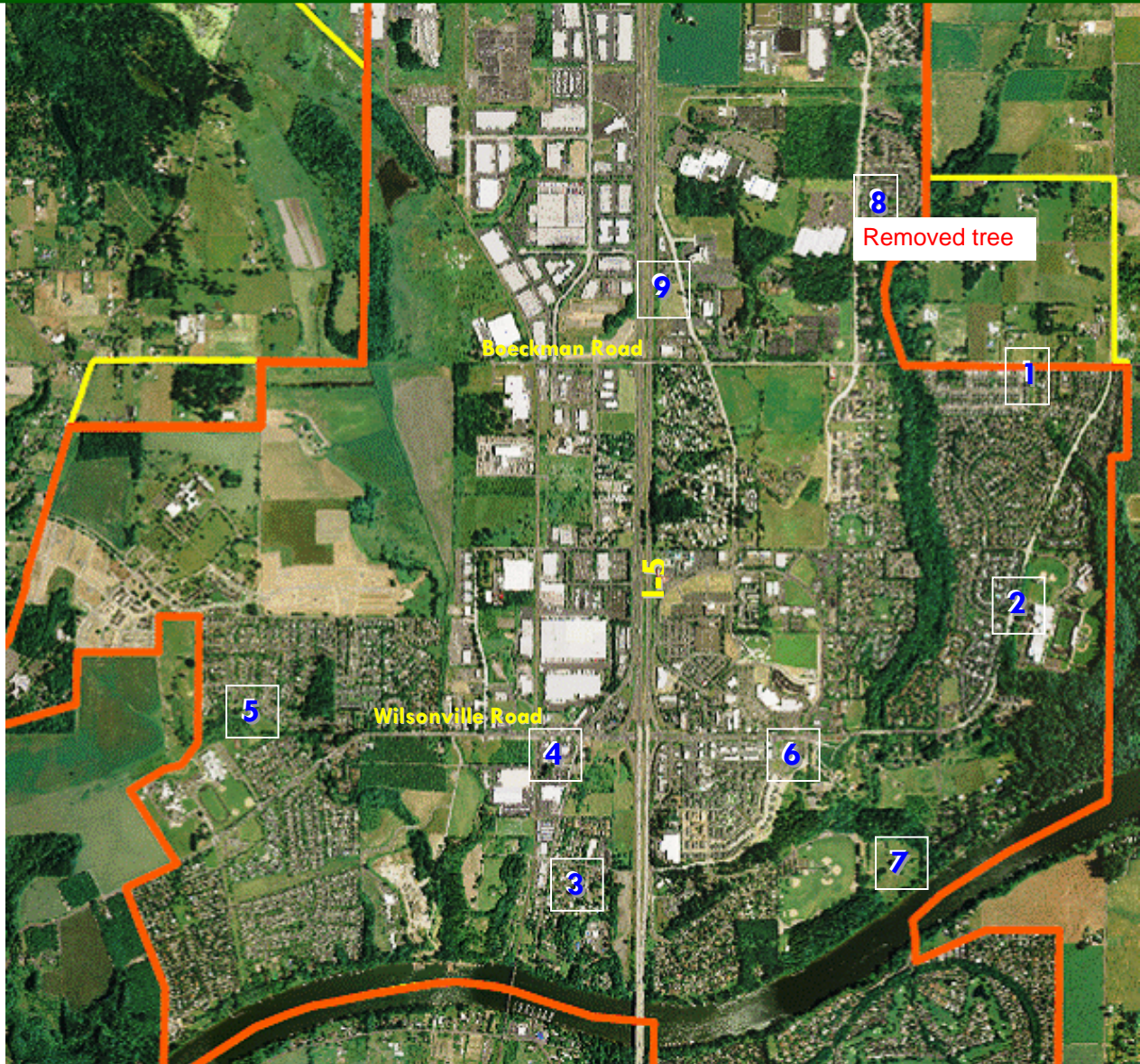


Wilsonville Heritage Tree Locations



1. Bob Wiedemann Japanese Maple

Planted in 1973 at Frog Pond Church in tribute to Bob Wiedemann. (2008)



2. Cumberland Oregon White Oak

Located at the Wilsonville High School. Formerly part of the Cumberland family farm. (2008)



3. Sue Guyton Heritage Tree Grove

Located on 4th Street in Old Town. The Grove was named in honor of Sue Guyton, a lifelong Wilsonville resident in 2009. (2007)



4. Lowries Marketplace Grove

These trees were planted by children from Wilsonville's first school which was located at this site (1870 - 1911). (2007)



5. R.V. Short Douglas Fir

Standing in a neighborhood park at Park at Merryfield, this fir is taller than anything else in the area. (2006)



6. Frank Lockyear Grove

Located at the Wilsonville Library, this grove was planted by Boy Scouts under the guidance of Frank Lockyear in the 1970s. (2005)



7. Ernest Kolbe Giant Sequoia

Planted by Wilsonville resident & forestry expert, Ernest Kolbe, adjacent to his former homestead on the east side of Memorial Park. (2004)

Removed tree



8. Fred Barnes Black Walnut

Located in the Canyon Creek Meadows neighborhood, the tree was part of the Adolph Failmezger home site in the early 1930s. (2009)



9. Gotfried & Elizabeth Failmezger Oregon White Oak

Located between Parkway Ave. & I-5, just north of Boeckman Road, the tree is over 100 years old. (2009)