

From The Director's Office:

As 2025 comes to a close, I would like to acknowledge the dedication, skills, and contributions of our Public Works staff to the health and safety of our community.

Each day Public Works (PW) employees provide essential services to ensure people living or working in our city enjoy clean and reliable water, safe and tidy streets and well-maintained infrastructure.

Additionally, PW staff provide emergency response services to clear roadways from debris, stop water leaks, and unclog drains, often working tirelessly in tough conditions of high wind, heavy rain and snow.

It is an honor to work with individuals who consistently exhibit "The Wilsonville Way" through their competence, collaboration, commitment and customer service actions.

Thanks to the Public Works Team for another productive year.



Best Regards,

Delora Kerber, Public Works Director

Utilities

The Root Of The Problem

Wilsonville is home to many beautiful trees, many of them located in sidewalk strips or areas of a property that may also share space with Utilities assets. Shown below, Utilities Water Technician David Perfecto is working to remove a meter box that had become engulfed with tree roots. Care is always taken to preserve the health of the tree when making these replacements. In this instance, the new meter box was customized to ensure it would fit in the new space created after removing the offending roots, while still keeping the main root system intact, and the tree healthy and viable for years to come. As a result, the new meter box and the tree are set up for many years of future success.



Utilities

The Bulk Of The Meter

Bulk Water Meters are heavy duty meters attached directly to hydrants for calculating water units used by construction, landscaping, large scale power washing, street sweeping or other industrial uses. Each water unit represents 748 gallons. Bulk water meters are installed, monitored and removed by City staff.

Depending on the type of equipment associated with the water use, the City may also require and install a backflow prevention device in conjunction with the meter, to prevent any backflow and protect the public water system. Bulk water meters are read individually by a member of the Utilities Water Team, and monitored periodically to ensure the equipment is being used appropriately. Water obtained with a Bulk Water Meter is intended for use only within the City limits, and cannot be transported outside of City limits for any use. Shown below is a hydrant with a Bulk Water Meter attached.

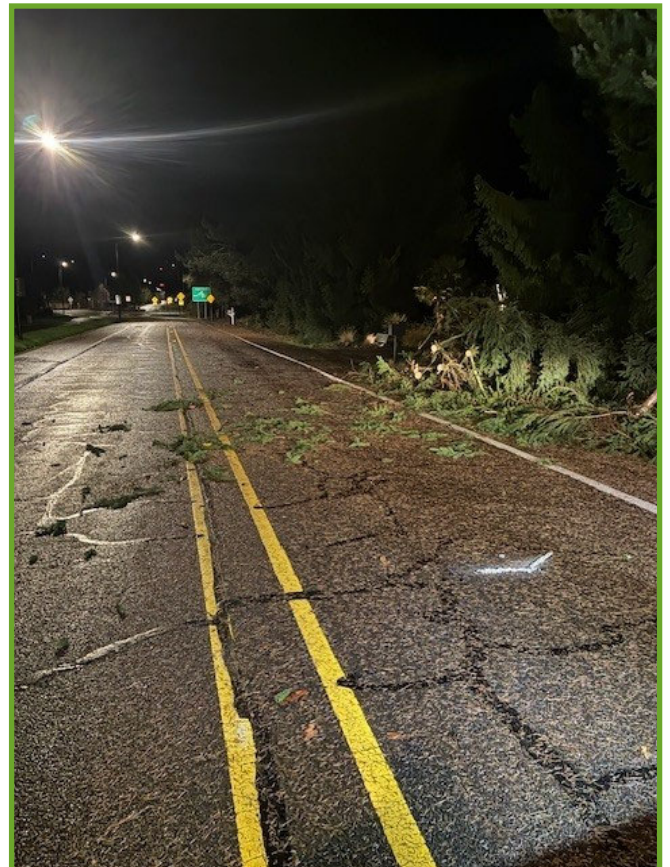


Facilities

After Hours

No matter what time the call comes in, Public Works staff are ready to assist in keeping the City of Wilsonville safe.

After a windstorm, a call for a fallen tree blocking a City roadway was received at 12:50am. Robert Todd, the Operations On-Call staff that week, responded to the report of one tree, only to find two more blocking roadways. Robert was onsite from 1:30 am—5:00 am cutting trees and clearing debris from the roads. After the work was completed, Robert arrived back at Public Works for his regularly scheduled shift starting at 7:00 am. All members of the Public Works and Parks Maintenance teams take their turn working On-Call shifts throughout the year. Thanks team!



Facilities

Merry and Bright

The Facilities Grounds Maintenance crew answered the call of residents requesting more holiday décor, lights and cheer. The team brought out their holiday best to festoon City Hall with lights and ornaments to keep the winter blues away.



After careful inspection by a special surprise guest, we are calling these efforts a success!



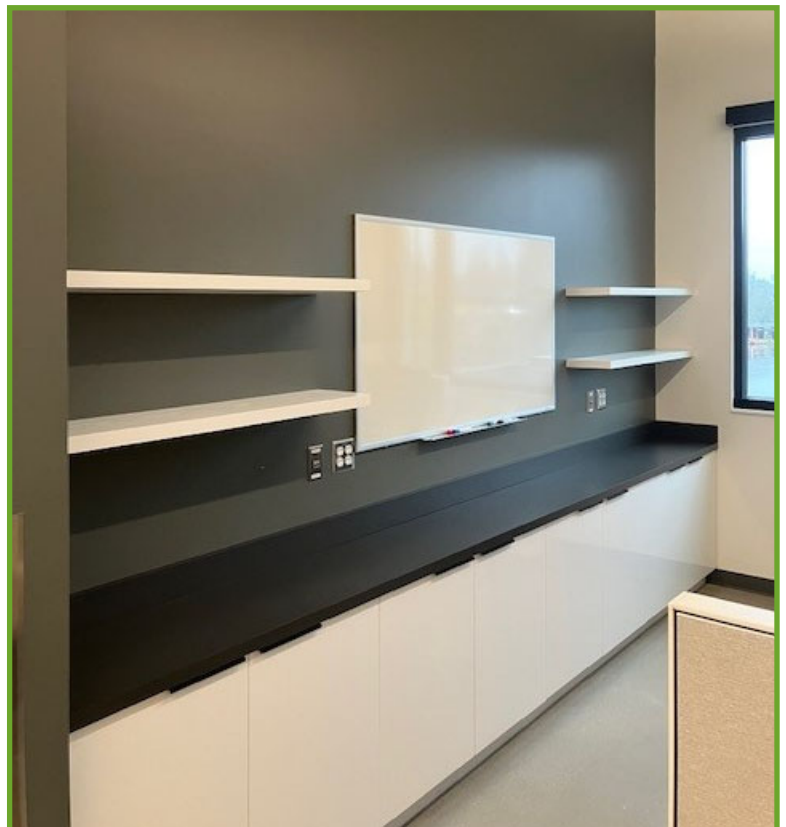
Facilities

New Year, New You

Facilities Maintenance Technicians Trevor Denfeld and Konnen Bell designed and installed new shelving and white boards in all the Public Works crew rooms. Each crew room received four 48" shelves and a five-foot white board above their cabinets. The additional shelves and white board allow for staff to better organize specialized equipment and important documents, and brainstorm projects on the white board.



With these additions the crews are ready to tackle 2026 project planning and execution.



Roads

Communication Is Key

The in-house sign shop and equipment at Public Works are used almost daily. Responding quickly and efficiently to sign installation and replacement needs keeps the City moving smart and safely.



The Roads crew also made tidy work of replacing a few railroad crossing markings at the intersection of the rail tracks with Boeckman Road and Barber Street. Old pavement markings are ground off before new decals are applied and bonded to the roadway with heat.

When it comes to keeping the City safe, bright, highly visible pavement markings and signage are both high priority.



Roads

Just In Time

The first part of December included numerous blow outs and leaf disposal efforts for City-maintained medians. This project was completed with just a few days to spare before the rainstorm; one median has enough leaves to potentially impact drainage if not properly maintained. It seems the Roads and Stormwater teams are always racing to beat inclement weather, and in this round, they won!



Stormwater

You're On Candid Camera

Every dry day offers opportunity for the Stormwater team of Jay Herber and Elijah Herrmann to continue surveying and cleaning Stormwater conveyance pipes.



Video inspection of the pipes helps identify any problematic areas such as root intrusion or excessive debris collections.

Currently staff is using the closed—circuit television (CCTV) equipment to explore the pipes in the Town Center Loop location, preparing for the anticipated growth in this part of town.



Stormwater

Eager Beavers

The Stormwater team was in very high demand during the torrential December rains. A well executed fall clean-up meant most areas were in tip-top shape when the rains began. One precaution involved removing debris from a large beaver dam off of Barber Boulevard that was damaged during high water flow through this area. This location may be easy for a beaver to access but is a challenging one to navigate equipment through.



The dam debris removal aided in preventing a back-up of water flow along Coffee Creek during the intense rains mid-month. Not all work takes place in plain sight, but preventative maintenance always pays off.

No beavers were harmed during the removal of the dam debris as they had already vacated the area.



Stormwater

Wild Weather Response Season

Happy Atmospheric River Season to those who celebrate! Unusually warm temperatures accompanied severe rainstorms that brought more than two inches of rain in 24 hours, creating a few challenges for existing infrastructure. The Stormwater and Roads teams jumped into action to ensure inlets and catch basins in known problem areas were cleared and functional, keeping roads open and safe for normal traffic flow.

