



# City of Wilsonville

## 2026 State Legislative Agenda





# Wilsonville's Legislative Initiatives

Located at the south end of the Portland metro area, Wilsonville is the gateway to the verdant Willamette Valley. Once a small farming community, Wilsonville is now a thriving city of more than 27,000 residents and 1,400+ businesses supporting 23,300 jobs.

## Frontage Improvement Conditions Technical Fix

HB 2658 (2025) prohibits cities from requiring frontage improvements when the building's square footage or occupancy classification group does not change. This creates a situation where use could change within the same classification group—such as a sit-down restaurant to a drive-thru—that has dramatically different traffic impacts, without the ability for a city to require mitigation. The need for transportation improvements should be connected to trip generation and the demand on the transportation system, not the occupancy classification group.

**The City of Wilsonville will seek legislation to make this technical fix to HB 2658's effect on transportation frontage improvements.**



## Oregon Housing Needs Analysis Rules

The Department of Land Conservation and Development (DLCD) is developing rules as part of the Oregon Housing Needs Analysis (OHNA) established by HB 2001 (2023), HB 2889 (2023), SB 1564 (2024), HB 2698 (2025), SB 1129 (2025), and other legislation.

The rules as drafted are an egregious overreach and are not aligned with the original legislative intent of OHNA. DLCD has created a “model code” that is, in all effects, mandatory, as it does not afford local jurisdictions reasonable opportunity to develop unique code. For example, the model code does not contain an open space requirement. While less of an issue for infill development, it would be a dramatic shift for new subdivisions, which typically require land to be set aside for parks.

**Wilsonville strongly supports legislation that retains safe harbor and local autonomy for cities that have adopted housing strategies and are meeting state-established housing targets.**



# Legislative Priorities

The City of Wilsonville seeks to advance the following state-level priorities:

## Boone Bridge Replacement Project

The Boone Bridge is an essential link on Interstate 5, the country's primary West Coast highway, carrying over 126,000 vehicles, including 17,000 trucks, daily.

A state-designated Seismic Lifeline Route, the bridge is at risk of falling during a Cascadia Subduction Zone earthquake. Additionally, local traffic using the bridge causes congestion. The Oregon Department of Transportation's Boone Bridge Replacement Project would make the bridge seismically resilient, add a southbound auxiliary lane, and improve safety.

**Wilsonville strongly supports advancing the Boone Bridge Replacement Project, including providing a project update to the Joint Committee on Transportation.**



## Infrastructure Financing

Infrastructure like utilities can be significant barriers to both housing and economic development. Programs such as the Housing Infrastructure Finance Program (HIFP) help cities fund major infrastructure projects that unlock new housing and jobs.

However, eligibility requirements make it challenging for cities to ensure success. HIFP contains minimum density requirements that could create downstream infrastructure capacity issues. Additionally, cities could be on the hook for repayment of HIFP funds if private development stalls or fails.

**Wilsonville supports legislation that expands eligibility and reduces barriers to accessing infrastructure assistance.**



## Public Meetings Law Interpretation

The Oregon Government Ethics Commission (OGE) has issued new interpretations of what qualifies as a "serial communication," vastly expanding the reach of the law and constraining local governments' ability to do business.

For example, e-mailing a link to a news article to other members of a governing body or a constituent calling multiple members of a governing body could be interpreted as a "serial communication."

**Wilsonville supports legislation that brings prudence to Oregon's public meeting and serial communication laws.**

## Homelessness Management

Following the U.S. Supreme Court's 2024 ruling in *City of Grants Pass v. Johnson*, Oregon's rules on camping in public spaces are unique because of HB 3115 (2021). Currently, Oregon law includes an "objectively reasonable" standard, which is not defined.

**Wilsonville supports legislation that increases flexibility for cities to address homelessness in a public safety-oriented, compassionate manner.**

At a minimum, legislation should create a rebuttable presumption that cities' regulations are "objectively reasonable" if the city conducted a public process and adopted findings explaining each regulation.



# Legislative Principles

The City of Wilsonville's policy positions, outlined below, are guided by its City Council Goals, Comprehensive Plan, community surveys, and other inputs. The City supports state legislation that would:

## Governance

- ✓ Preserve the **home-rule autonomy** of local governments.
- ✓ **Maintain state shared revenues**—such as fuels, alcohol, and tobacco taxes—which support effective delivery of essential services for our shared constituents.
- ✓ Provide **adequate funding** to implement state policy changes. Wilsonville opposes unfunded and partially-funded mandates.

## Transportation and Public Transit

- ✓ Invest in a **multi-modal transportation system** using funding mechanisms that are sustainable over the long term, maintain Oregon's longstanding user-pay model, and are balanced and fair to all users.

- ✓ Improve **seismic resiliency, reduce congestion and emissions, and enhance safety** for all users of our transportation system.

- ✓ Recognize the role **small transit providers** play in providing essential transportation services in communities that are otherwise un- or under-served.

- ✓ Promote the availability of **commuter rail**, including establishment of an Oregon Rail Authority and expansion of the Westside Express Service (WES).

- ✓ Mitigate public safety and quality of life issues caused by **aviation activity**.



## Natural Resources and Environment

- ✓ Enhance connections to the Willamette River for economic, tourism, and cultural benefits, including re-opening the **Willamette Falls Locks and Canal**.
- ✓ Support the **conservation of valuable resource lands** outside of the Urban Growth Boundary (UGB).
- ✓ **Protect natural resources** for the benefit of human health, quality of life, recreational opportunity, and wildlife habitat.



# Legislative Principles *Continued*

## Housing and Community Development

- ✓ Provide grants and loans for cities to **expand or upgrade public infrastructure**—including water and sewer treatment, utilities, and stormwater management—that enable housing development.

- ✓ Address Oregon's housing shortage by encouraging a **broad mix of housing types** for residents of all income levels.
- ✓ Wilsonville opposes efforts to revoke local flexibility in comprehensive planning, apply uniform design requirements, or grant the state supersiting authority.



- ✓ Preserve **local control over System Development Charges (SDCs) and expand the statewide SDC loan program**. Wilsonville opposes efforts to eliminate longstanding eligible uses of SDCs or change when in the permit approval process SDCs must be paid.
- ✓ Maintain Oregon land use law's requirement that **urban development activities occur in cities**. Wilsonville opposes efforts to encourage urban-level development outside of cities.

## Economy and Workforce

- ✓ Increase funding for industrial site development, including the **Regionally Significant Industrial Sites (RSIS) program** and reclaiming "**brownfield**" sites.
- ✓ Create, extend, or increase existing and innovative new economic development tools to attract and retain businesses and jobs, such as an **Industrial Development Revolving Loan Fund** capitalized with a portion of state income tax generated by jobs created as a direct result of the RSIS program.
- ✓ Expand **childcare availability and affordability** as a key method to support workforce recruitment and retention.



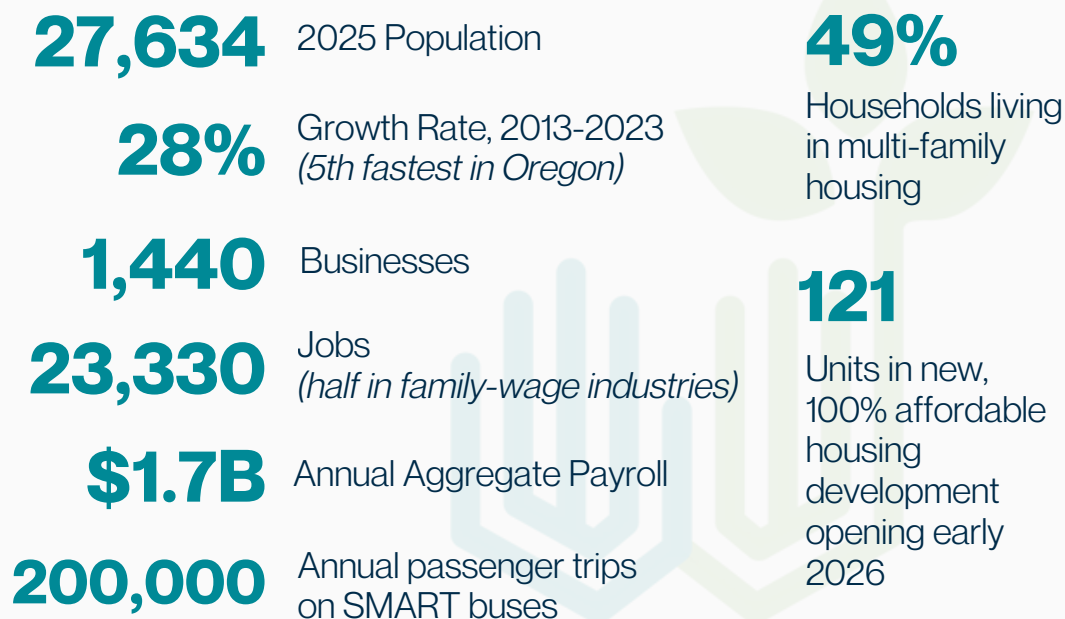




# Wilsonville's Largest Employers

- 1 Siemens (Mentor Graphics)
- 2 Rockwell Collins
- 3 Swire Coca-Cola USA
- 4 Sysco Food Service
- 5 Columbia Distributing
- 6 Costco
- 7 TE Medical (Precision Interconnect)
- 8 Twist Bioscience
- 9 OrePac Building Products
- 10 Fred Meyer Stores

## Wilsonville By the Numbers



### Key City Staff

**Bryan Cosgrove**

City Manager

**Amanda Guile-Hinman**

City Attorney

**Everett Wild**

Government Relations Manager

**Greg Leo**

Public Affairs Consultant

### Elected Officials



**Shawn O'Neil**

Mayor



**Caroline Berry**

Council President



**Adam Cunningham**

Councilor



**Sam Scull**

Councilor



**Anne Shevlin**

Councilor

✉ ewild@wilsonvilleoregon.gov

☎ 503-570-1505

✉ greg@theleocompany.com

☎ 503-804-6391

🌐 WilsonvilleOregon.gov

📍 29799 SW Town Center Loop E  
Wilsonville, OR 97070