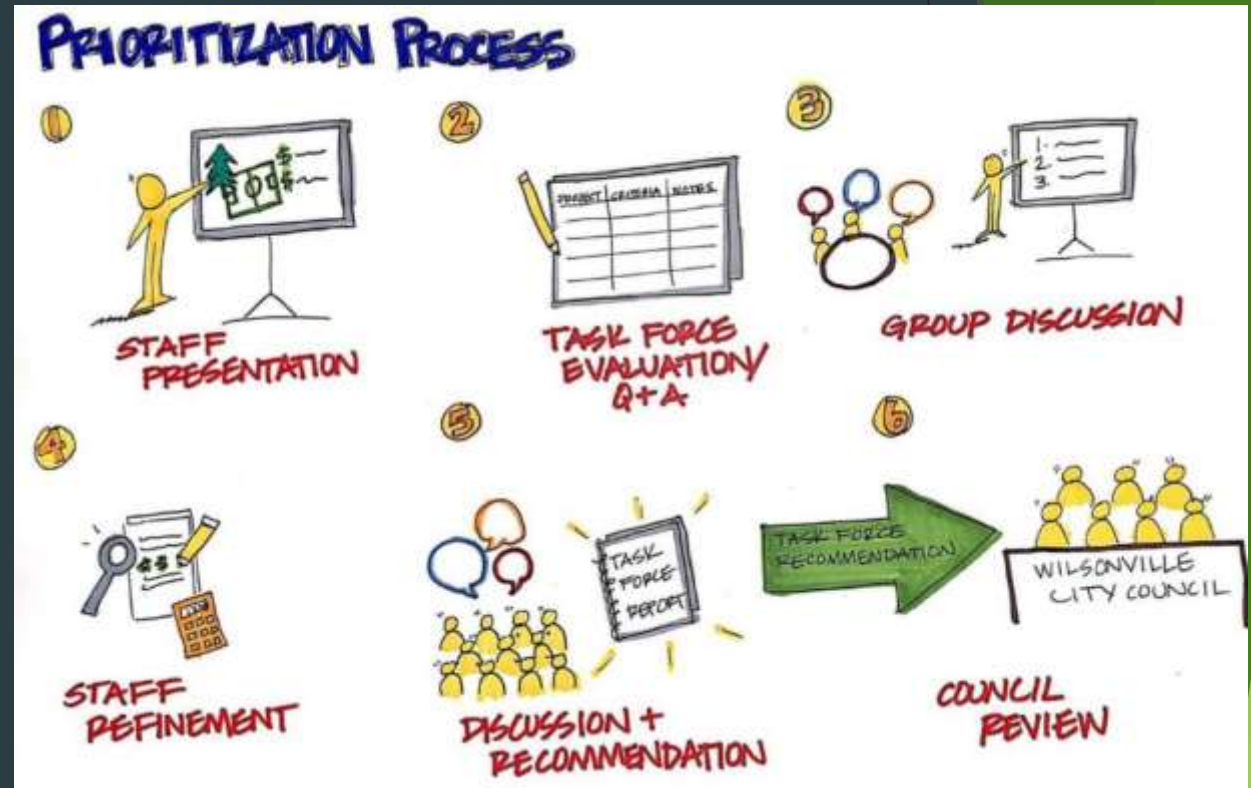


# Unfunded Park Projects: Background

- Wilsonville Parks and Recreation Comprehensive Master Plan Adopted October 2018
- Parks Bond Task Force appointed by Council to prioritize park projects - 2019
- Task Force Park Project Priority List ready to present to Council - early 2020
- Worldwide Pandemic - Forced to Pause

# Community Driven

- Task Force made up of 20 community members
- Met 6 times over a several month period
- Consensus based approach
- Voting exercises
- Online ranking surveys

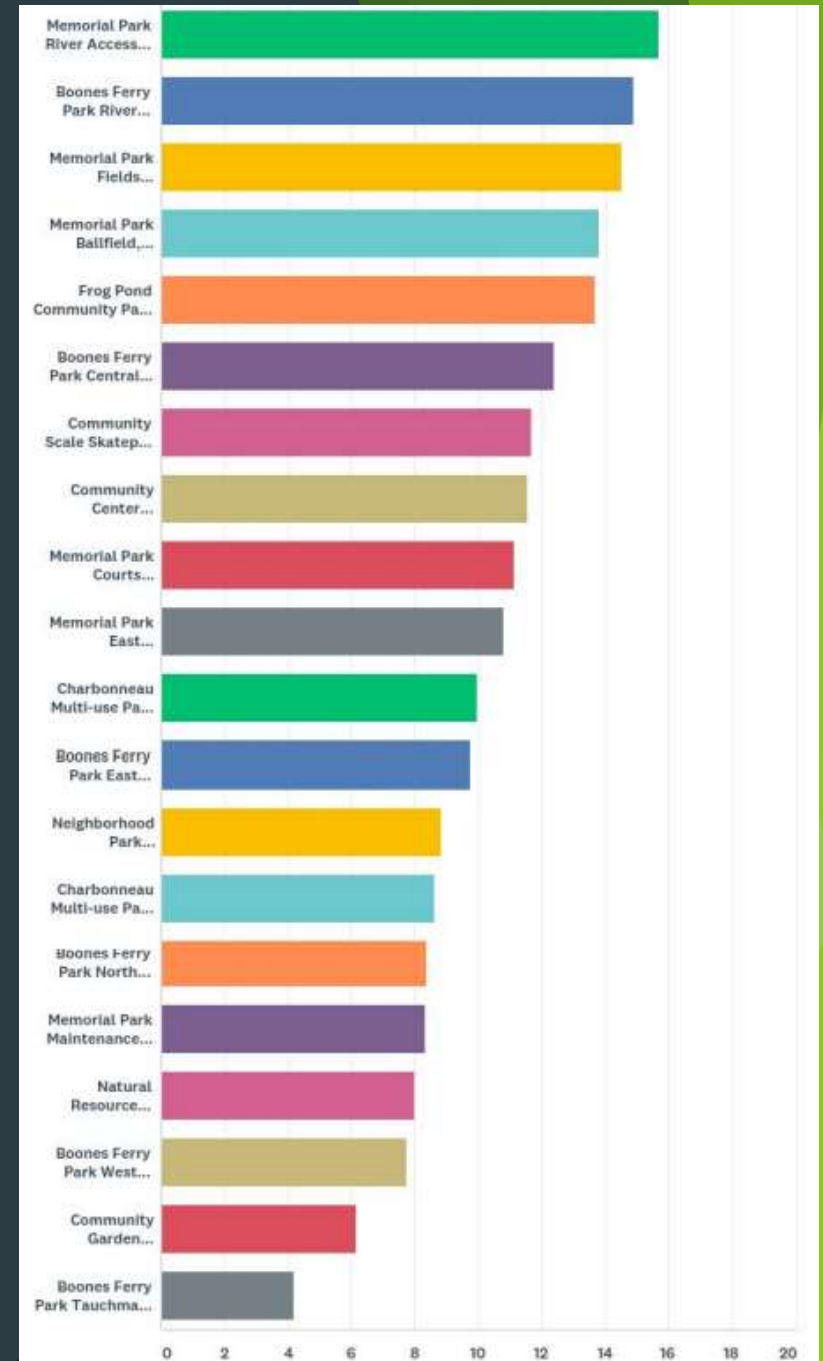


# Prioritizing Criteria

- **Public Involvement:** Has the community indicated this project is a priority during previous public outreach processes?
- **Additions:** Are we adding an amenity to the City's park system that doesn't currently exist?
- **Capacity Building:** Are we adding needed capacity to an existing amenity?
- **Equity:** Will the project serve a range of demographics? Can the project benefit residents across the community?

# Ranking/Scoring Outcomes

PARK PROJECT	ESTIMATED COST	# OF VOTES
Memorial Park River Access	\$2,700,000	12
Frog Pond Park Community Park	\$17,500,00	10
Memorial Park Fields	\$8,500,000	9
Community Scale Skatepark - Town Center	\$800,000	8
Boones Ferry Park River Access	\$5,050,000	7
Memorial Park Ballfield Bathrooms & Concessions	\$250,000	5
Boones Ferry Park Central	\$3,300,000	5
Community Center Improvements	\$600,000	5
Charbonneau Multi-use Path Extension	\$2,500,000	4
Boones Ferry Park West	\$700,000	2
Memorial Park East	\$3,000,000	1
Memorial Park Courts	\$900,000	1
Boones Ferry Park East	\$3,600,000	1
Boones Ferry Park Tauchman House	\$750,000	1
Boones Ferry Park North	\$600,000	1
Natural Resource Enhancement and Management Plan	\$200,000	1
Neighborhood Park Improvements	\$600,000	1
Charbonneau Multi-use Path Repair/Replacement	\$1,500,000	1
Memorial Park Maintenance Facility Upgrades	\$350,000	0
Community Garden	\$100,000	0



# Priority Projects

- Memorial Park River Access
- Boones Ferry Park River Access
- Memorial Park Fields
- Frog Pond Community Park
- Boones Ferry Park Central
- Community Scale Skatepark
- Community Center Improvements
- Memorial Park Courts
- Memorial Park East
- Charbonneau Multi-use Path Extension
- Boones Ferry Park East
- Neighborhood Park Improvements
- Charbonneau Multi-Use Path Repair/Replace
- Boones Ferry Park North
- Memorial Park Maintenance Facility Upgrades
- Natural Resource Enhancement and Management Plan
- Boones Ferry Park West
- Boones Ferry Park Tauchman House

# Community Projects

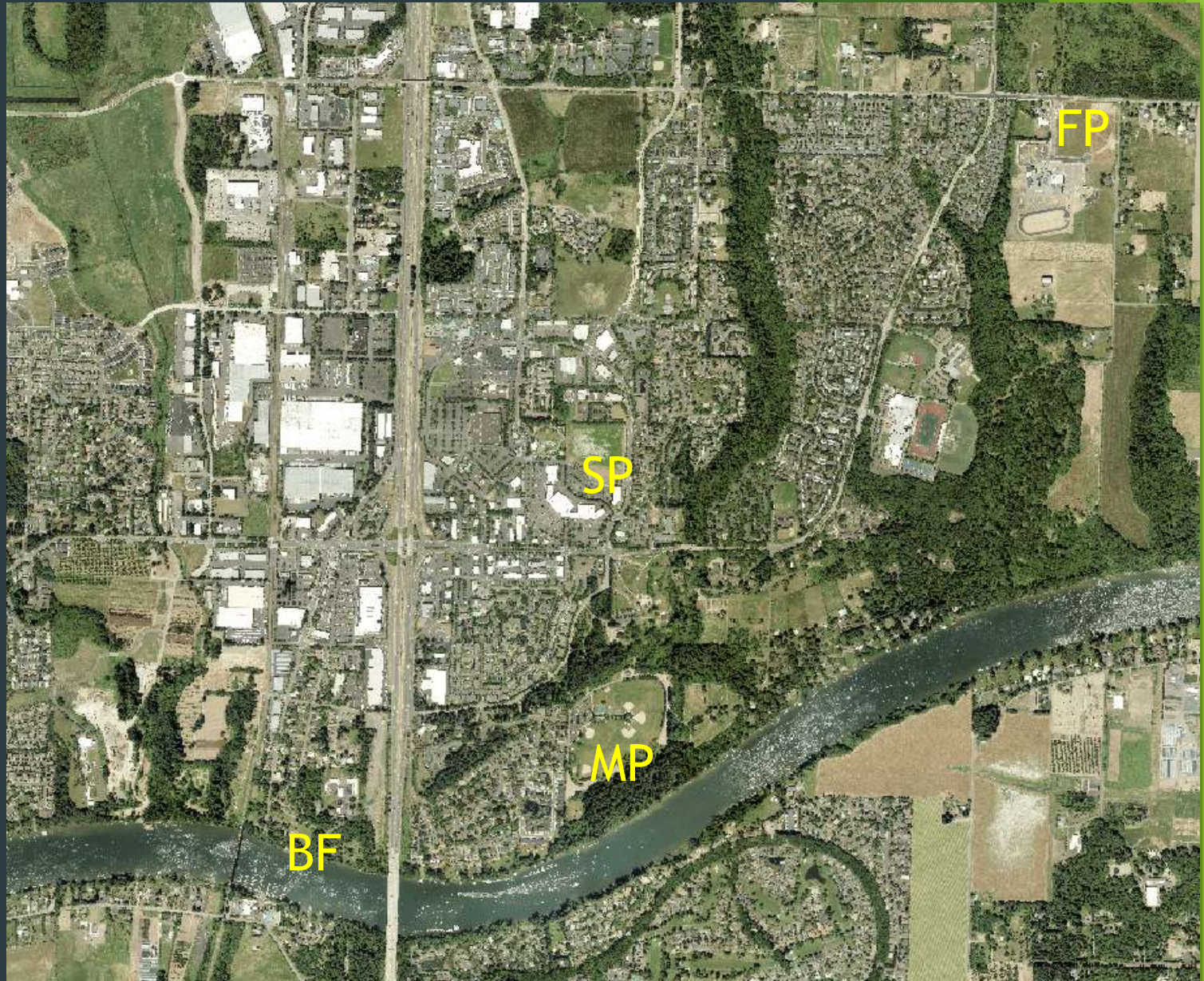
Wilsonville Parks and Recreation  
Comprehensive Master Plan  
*October 2018*

MP Memorial Park Master Plan  
*May 2015*

BF Boones Ferry Park Master Plan  
*December 2018*

FP Frog Pond Community Park  
(Advance Road)  
*October 2018*

SP Community Scale Skatepark  
(Courtside Drive)  
*February 2015*





# Memorial Park

## East

Skatepark, Bike Skills Course, Bathroom, and Parking

## Central

Two Synthetic Turf Fields, Lighting for 4 Fields, Backstops, Field Upgrades, and SW Parking Lot

## Ballfield Bathrooms and Concessions

Upgraded Bathrooms and Added Concession Stand

## Courts

Additional Pickleball, Tennis, and Basketball Courts

## River Access

Non-Motorized Boat Dock and Access, Bathroom, Watercraft Concession, Trails, Overlooks

## Maintenance Facility Upgrades

# Boones Ferry Park

## River Access

Dock with Non-Motorized Watercraft Launch, Restroom, Rental Opportunities, River Overlooks, Parking

## East

Dog Park, Bike Skills Course, Restroom, Parking

## Central

Playground, Shelters, Restroom Upgrades, Fitness Course, Overlooks, Trails

## Tauchman House

Updates to Tauchman House

## North

Soft Surface Trails and Parking

## West

French Prairie Bridge Landing, Trails and Parking





# Frog Pond Community Park



# Community Scale Skatepark



15,000 sq/ft park

# Priority Projects

- Memorial Park River Access
- Boones Ferry Park River Access
- Memorial Park Fields
- Frog Pond Community Park
- Boones Ferry Park Central
- Community Scale Skatepark
- Community Center Improvements
- Memorial Park Courts
- Memorial Park East
- Charbonneau Multi-Use Path Extension
- Boones Ferry Park East
- Neighborhood Park Improvements
- Charbonneau Multi-Use Path Repair/Replace
- Boones Ferry Park North
- Memorial Park Maintenance Facility Upgrades
- Natural Resource Enhancement and Management Plan
- Boones Ferry Park West
- Boones Ferry Park Tauchman House

Council Goal: Expand Wilsonville's Park and Facilities to  
Align with Community Growth and Needs  
Strategy 16. Review and Update Park Project Prioritization  
through the Parks and Recreation Board

- Are these still the priority park projects?
- Additions/omissions?
- Change in order?
- Additional thoughts, comments, questions...