



Overview of Kitakata City

Materials for Learning about Kitakata City's Municipal
Administration

2024.2.5

Presented by

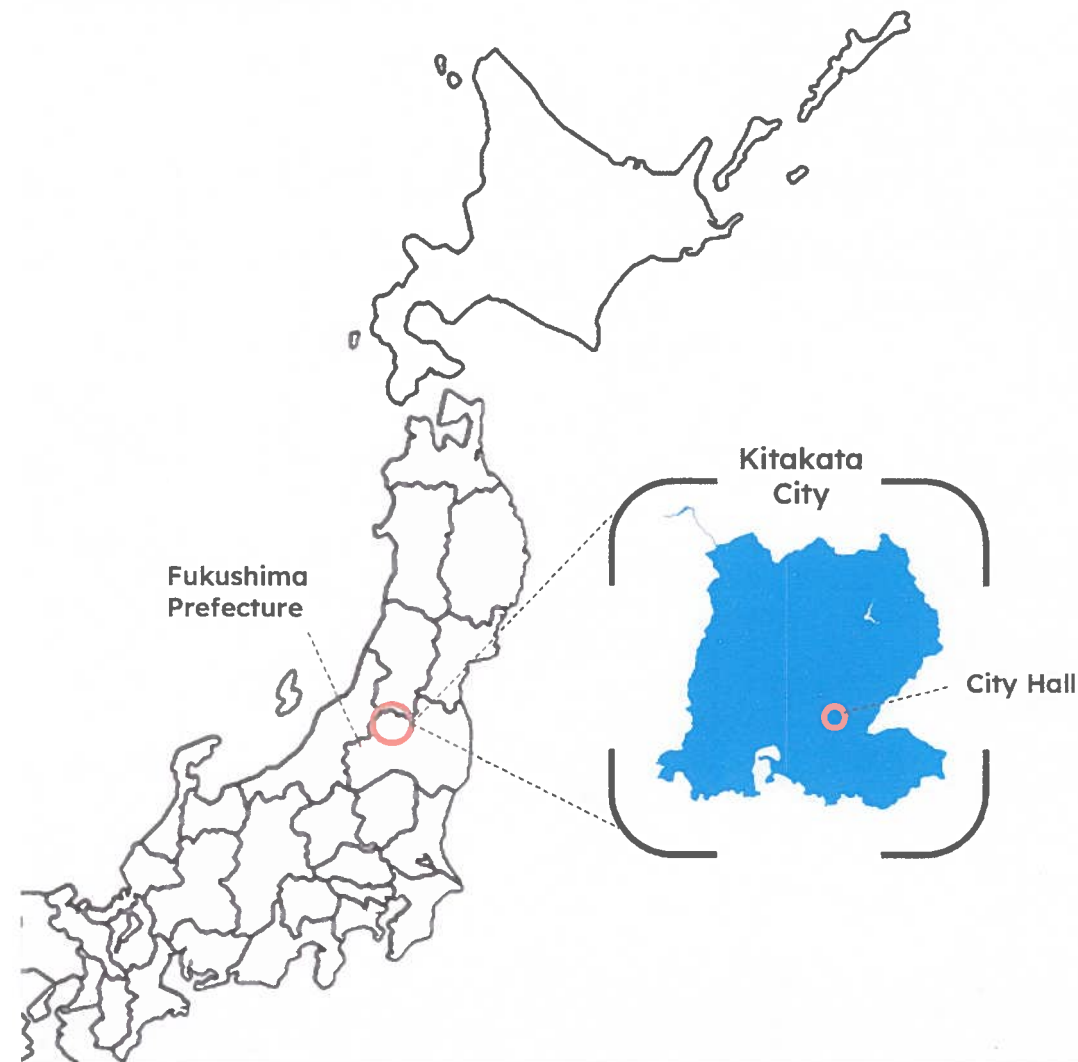
Kitakata City Hall

Planning and Coordination Division

Geographical Location and Basic Information



Map



Area

554.63 km² ≒ 136,896 acre

Population

approx. **44,000**

Climate

avg.temp. **11.4** °C ≒ 52.5 °F

precip. **1,562** mm

Local traditions and distinctive culture deeply rooted in the region

Traditional

“ Kura ”



As a building that evokes nostalgia and a sense of longing, it creates a unique landscape. Not only used for storage, but also for a wide range of purposes such as shops, residences, and workplaces, it is characterized by its versatility.

“ Matsuri ”



The summer festival is a one of traditional event in Kitakata. Featuring lively dances to festival music, spirited drum performances, and grand fireworks synchronized to the festival atmosphere, there are plenty of highlights that attract many visitors every year.

“ Flower ”



In spring, 1,000 weeping cherry blossom trees bloom along a stretch of about 3 kilometers, boasting one of the largest cherry blossom avenues in the country. In May, 3.5 million rape blossoms also bloom, and during summer, 2.5 million sunflowers proudly display their vibrant colors.

Culture

“ Ramen ”



Kitakata Ramen is widely renowned across the country. Its distinctive feature is the use of noodles made with high water content, using underground water sourced from melting snow. The popular appeal lies in the harmonious combination of the texture of these noodles and the lightness of the broth.

“ Soba ”



Flavorful soba made using buckwheat flour cultivated in pristine water and a climate with significant temperature variations. Within the city, there are 7 soba-making groups, each with unique characteristics and a passionate spirit.

“ Nihonshu ”



Sake made with the abundant use of high-quality spring water, known for its softness. Kitakata City has garnered numerous awards in national new sake competitions and international contests. The abundant water, rice, and craftsmanship have contributed to the cultural development of Kitakata City.

Organization structure within the city hall and the Roles of each organization

The number of divisions within a department

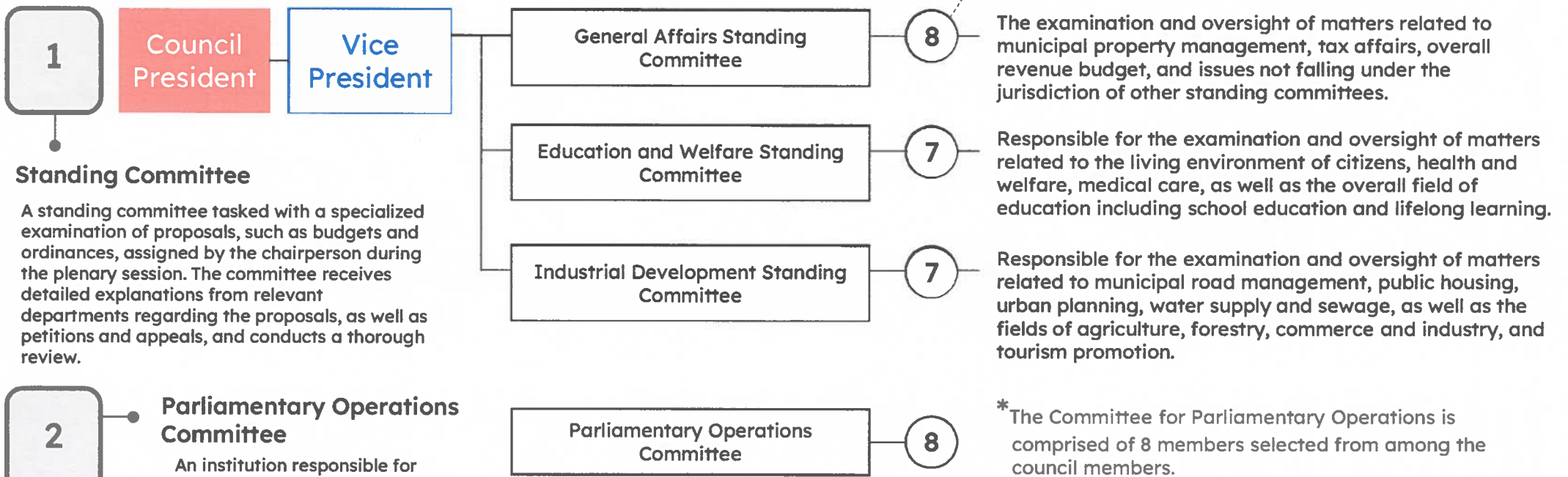
Organizational chart



The Composition of the City Council and the Roles of Committees

The number of members belonging to the committee

Organizational chart



Standing Committee

A standing committee tasked with a specialized examination of proposals, such as budgets and ordinances, assigned by the chairperson during the plenary session. The committee receives detailed explanations from relevant departments regarding the proposals, as well as petitions and appeals, and conducts a thorough review.

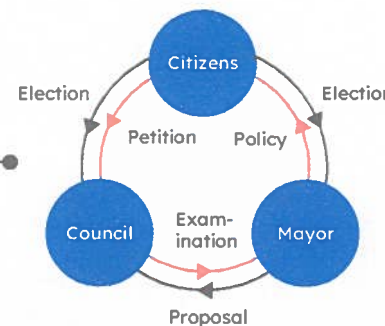
2

Parliamentary Operations Committee

An institution responsible for deliberating and coordinating matters related to the operation of the assembly and parliamentary reforms during this session.

Basic info

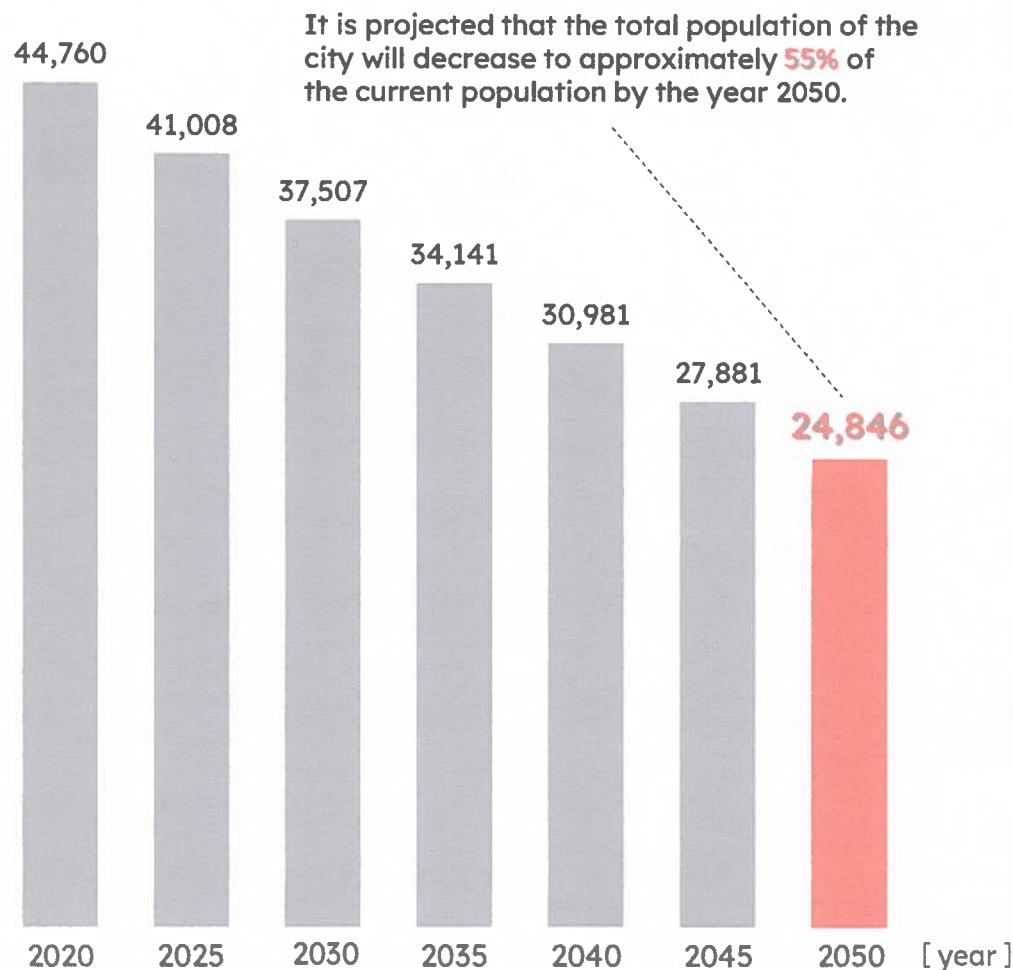
Council members are elected by the citizens through an election for a term of four years. The number of council members is stipulated at 22 by an ordinance determining the number of KitaKata City Council members. Currently, **there are 22 council members in KitaKata City**, divided into 3 standing committees for examination.



The mayor proposes budgets, ordinances, and other matters to the council as draft resolutions, and the city council conducts investigations and deliberations to make decisions. The city follows the decisions made by the council and implements municipal policies. The city council and the mayor hold independent and equal positions, establishing a check-and-cooperation relationship.

The population decline issue

Total Population (Estimate)



Background factors

1 Escalation of the Declining Birthrate Issue

1 Delaying marriage and increasing rates of remaining unmarried

Since the 1980s, the unmarried rate among women aged 30 and above in the country has been increasing, leading to a trend of both late marriage and rising unmarried rates.

2 Women's societal advancement and diversification of values

In 1985, a law was enacted to equalize employment opportunities for men and women, leading to the increased societal participation of women. However, the challenges of balancing parenting and work may impact the choice to have children.

Additionally, the variety of pleasures and the convenience of single living may contribute to a shift in values regarding marriage and family.

2 Outflow of the labor force to urban areas

Currently, approximately 30% of the total population of Japan resides in the Tokyo metropolitan area. The migration to urban areas, predominantly by young individuals motivated by employment opportunities, is evident. However, improving employment conditions in rural areas remains a challenging task given the current situation.

Key Policies_

Construction of a complex facility

Logo



Overview

“ AIDEMI KITAKATA ”



2022.4.3~

This facility was constructed with the concept of serving as a hub for diverse interactions and vibrancy, not only for citizens but also for residents of neighboring towns and villages, as well as visitors to the city, spanning from children to the elderly. The aim is **to create a space where a multitude of people can engage in various interactions and activities.**

Inside the facility, there are children's play areas and childcare support center, making it a symbol of childcare support in the city. Additionally, the facility has a training room for nursing and caregiving personnel, playing a role in supporting local healthcare and care services.

Facility Guide

