

Parks and Recreation Meeting notes

Attendees: Kris Ammerman, Erica Behler, Aaron Reyna, Dustin Schull

4/4/2024

- Introductions

Aaron- Provided an overview of the Wilsonville Japanese rock garden project concept and the desire to increase the visibility of the Kitakata Sister City Program within the City of Wilsonville. Also brought up some of the existing issues with the current location of the Kitakata stone and its proximity to the Korean War Memorial.

Discussion of rock garden potential sites:

Town Center Park- With the current redevelopment plans for the park stage and surrounding area this site does seem suitable for this project.

Memorial Park- We discussed several options:

- Near Murase Plaza- Dustin brought up potential issues with children climbing on structures if it was placed too close to the water feature.
- The lower section below Muraze Plaza near the oak trees and winding path to the Grove Shelter- Dustin brought up current noxious weed treatment that is currently underway and a second phase for an adjacent section that is in the works. He also discussed plans to connect a trail system to the park. Kris brought up future expansion plans for the path to 10ft (Part of a 5-to-10-year plan) and redevelopment of the grass hill amphitheater area. (This area could be possible but these future development plans would have to be taken into consideration.)
- Near the entrance to the Muraze Plaza close to existing garden area and shelter -Dustin site not ideal due to tree drip zone.
- Kris and Dustin- Suggested two future parking lot projects that we could incorporate this concept into the design. (There is no current timeline for implementation of these future parking lot projects.)

Library grounds:

Parks and Recreation doesn't manage that area so we would need to connect with the Library Director and potentially Facilities.

Erica-Brought up a grassy knoll area adjacent to the library that is currently undeveloped.

Aaron-brought up the area between the library and the main road as another idea.

Next Steps:

- Debrief with Kitakata Board
- Reach out to Wilsonville Library Director
- Reach out to Wilsonville Planning Department
- Reach out to Wilsonville Tourism Committee
- Follow up on any other alternate site suggestions from Dustin or Kris if any.

References Maps

Page 21 Memorial Park Master Plan Update May 2015

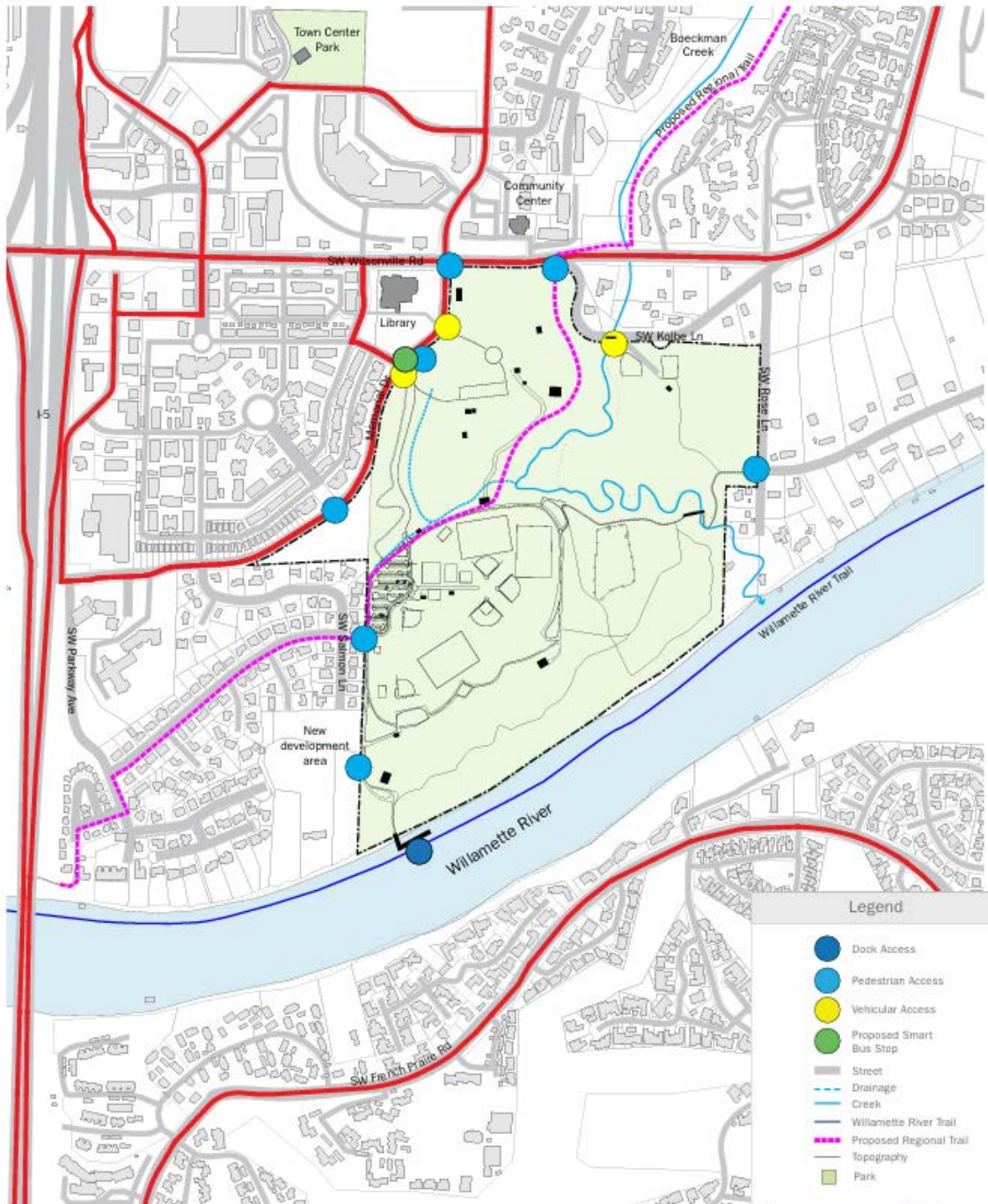


Figure 4 - CONTEXT ANALYSIS

The interface between Memorial Park and adjoining communities is important for providing safe and efficient access by different modes of transportation. The context analysis diagram highlights the existing types of access points and prominent circulation routes to and through the park.

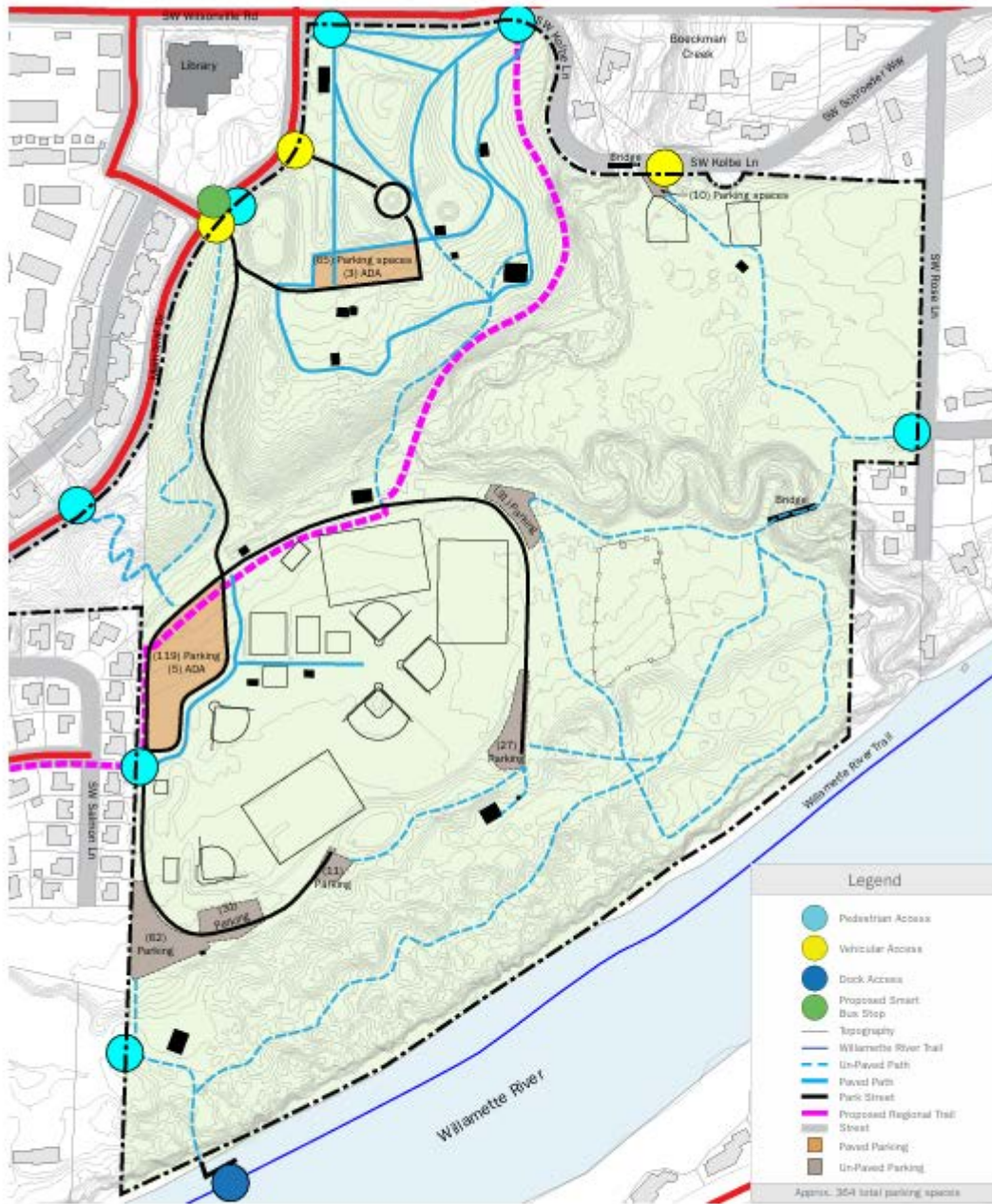


Figure 6 - CIRCULATION

Cohesive circulation throughout the park is important for safety, emergency access, user access, and way finding. The diagram maps existing locations and types of access, streets, paths, and trails. Parking lot locations and quantities of parking spaces are shown.



Memorial Park Amenities

P - Parking

RR—Restroom

PG—Playground

TC—Tennis Courts

PC—Pickleball Courts

BB—Basketball Courts

SP—Skate Park

Ball Fields 1, 2, and 4 have lights and are available for evening play.

Soccer Fields are outlined in Black.

Baseball/Softball Fields are outlined in white.