

State of the City

Mayor Julie Fitzgerald



Wilsonville, Oregon | May 6, 2024

People make
the place.



Boeckman Road Closure, Road Improvements to Begin in Late January



PROGRESS IN FROG POND WEST

Major Projects Begin to Add New Park, Primary School



A 2.9-acre parcel adjacent to the future primary school on Boeckman Road is the site of a future neighborhood park. The park property was purchased with a \$1.3 million grant from Metro.

Two concurrent projects within the Frog Pond West neighborhood are underway to add critical community amenities: a new primary school and a neighborhood park.

In mid-June, the West Linn-Wilsonville (WLWV) School District hosted a ceremonial ground-breaking at the future site of a new elementary school on Boeckman Road. The school, designed to accommodate 350 students, is slated to open in time for the 2025-26 school year.

Metro Funds 2.9-Acre Park Purchase with \$1.3 Million Local Share Grant

In April, Wilsonville reached agreement with the WLVV School District to purchase a 2.9-acre parcel of the property to build a future neighborhood park.

In late June, Metro announced a funding award for the \$1.3 million purchase of the land through Local Share, a program from Metro's 2019 parks and nature bond designed to expand access to nature for everyone in greater Portland.

Design of the park, informed by public input, is already complete. Amenities include a large covered picnic shelter, lawn, a young kids' (2-5 yo) play area and about .6 miles of hard surface trail. A soft surface wetland path and adult fitness amenities are also planned. The project was designed by the City in collaboration with Mayer / Reed. The timeline for construction is undetermined.

When complete, the new park will provide neighborhood connectivity, a connection to the Boeckman Creek Regional Trail, and support the Safe Routes to School program.



Wilsonville logo

Wilsonville's new primary school is a project funded by the District's 2019 Capital Bond to address enrollment growth as the Frog Pond neighborhood grows. A virtual tour of the new school is available at tmsnet.ca/wsa/or/wilsonville/

Set on a 10-acre property that includes the CREST farm, an environmental center that engages students in hands-on learning, and community stewardship, the school provides room for an eventual addition to accommodate as many as 550 students.



City Council Adopts Overnight Camping Code Revisions, Rules

A months-long project to bring the City's overnight camping code in compliance with new State laws is now complete.

The City Council adopted Ordinance 879, which revises City Code to provide compassionate protections for people experiencing homelessness before July 1, 2023, as mandated by the State of Oregon.



In compliance with new Oregon law, the City has designated locations near City Hall where vehicle camping (yellow) and tent camping (solid orange) are permitted for temporary shelter between 9 pm - 7 am.

The new laws prohibit an outright ban of overnight camping, but do allow cities to place reasonable time, place and manner restrictions on camping. The project to revise the Code and to develop these guidelines was led by City Attorney Amanda Guile-Hinman, and informed by vast input from the City Council, concerned community members, social service agencies, law enforcement, and people experiencing homelessness. Resolution 3058, adopted May 15, articulates the time, place and manner guidelines to be in effect on July 1.



City staff is now working upon an implementation plan that ensures the cleanliness of the site, prioritizes public safety, and identifies social services within Clackamas County that provide longer-term solutions for the small number of Wilsonville residents experiencing homelessness.

Upon implementation on July 1, camping is only to be allowed at the designated location area delineated on the map.

At the designated tent camping area on Courthouse Dr., just north of City Hall, a vegetative screen has been planted to provide a visual barrier between SW Town Center Loop E, and the location where tent camping for survival is allowed.



The Boones Ferry Messenger

Northwest newsletter of the City of Wilsonville December 2022



New temporary traffic signals at the Stafford and 65th Ave. intersection are now operational. The signals are to manage the increased demand of traffic when Boeckman Road closes for roughly 147% of the weekend.

Temporary Signal Activated at Stafford, 65th Ave. Intersection

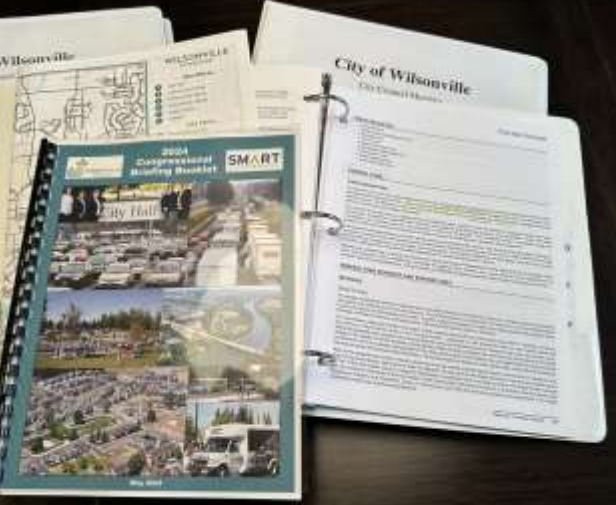
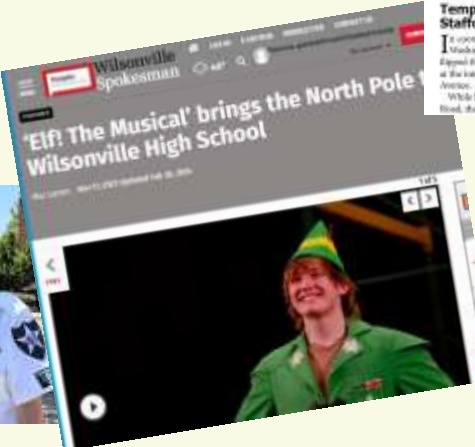
In coordination with PGE, Clackamas County, and Multnomah County, the City of Wilsonville has signed the permits for a new temporary traffic signal at the intersection of SW Stafford Road and SW 65th Avenue.

While located more than a mile from Boeckman Road, the signal is critical to the City's plan to



Kitakata Exchange is a Valuable Reminder of Our Shared Humanity

Over 100 people gathered for the Kitakata Exchange, a community event that brings people together to share their stories and experiences. The event was held at the Kitakata Exchange, a community center that provides a safe and supportive environment for people experiencing homelessness.



What would
we do without
our great
streets, parks,
trails?



Partnerships

Boone Bridge— **now a Mega Project**

Tolling **halted— what's next?**

65th at Stafford Road- **now fully funded, ready for design.**

We're working with Aurora and neighbors on the Airport Master Plan.

Next week, Wilsonville and nearby cities will go to Washington DC to seek funding for transportation priorities.





Willamette Water Supply

Partnering to develop the mid-Willamette River at Wilsonville as an additional water supply source:

- **Tualatin Valley Water District**
- **City of Hillsboro**
- **City of Beaverton**



Partnering and Values

Mediterranean Oak Borer pests are attacking our Tree City- **Depts. of Forestry and Agriculture** working with Wilsonville on unexpected dangerous insect invasion

Camping Ban Regulations: Developed values, strategies and funding for work with staff, local groups, public safety and Clackamas County to **prevent and eliminate homelessness.**



ExploreWilsonville.com

Our **Tourism Committee** develops and implements strategies to drive activities in business sectors affected by the Hotel/motel tax. Their work is funded by that same tax.

Vibrant, safe communities have positive social networks and vibrant retail— and that means each person has a role. Is online shopping always the best choice?



Partners for Housing

Partnering with the Legislature, Metro and Clackamas County- we'll add achievable housing with a Transit Oriented Development that is **now fully funded**.

A growing imbalance between housing costs and wages can slow job growth and industry decisions on relocation and expansion.*

* From the Equitable Housing Strategic Plan unanimously adopted in 2020 by the City Council.





DWFRITZ

PRECISION
COUNTERTOPS



xerox

SIEMENS



Frog Pond Neighborhood

Frog Pond West:

Larger, mostly detached homes, some attached single-family duplex homes.

Frog Pond East:

It is similar to Villebois, with about 50% single-family homes, middle housing/townhouses, and 10-15% multifamily.



Eastside Urban Renewal Is Closed (Y2K)



1 Streets

Wilsonville Rd including
underground utilities
Boones Ferry Rd; 5th to Kinsman
Memorial Rd.. Courtside Rd.
Boeckman Rd. Corridor
Project/Bike/Ped improvements
Misc. Streetscapes, Signals

2

School Partnerships

Wilsonville High Gymnasium
High School Public Facilities
High School Girls' Field
Improvement
I-5 Underpass enhancements
Sewer Plant upgrade funding

3

Parks & Rec, Housing

Park land acquisition
City Hall Site Acquisition
Town Center Park
Murase Plaza
City Hall
Creekside Woods Sr. Housing
Sewer Plant upgrade



NO WATER
WHEELS

SPEED
LIMIT
25



Closing W. UR 6/30/2024

Tax increment collection on the Westside Plan is closing this June. Banked for FY 25 and 26 budget from the Westside Plan: Sidewalks, required stormwater management, street trees, to produce safer driving, routes to school, ADA access, bike and pedestrian -- for everyone who uses Brown Road.



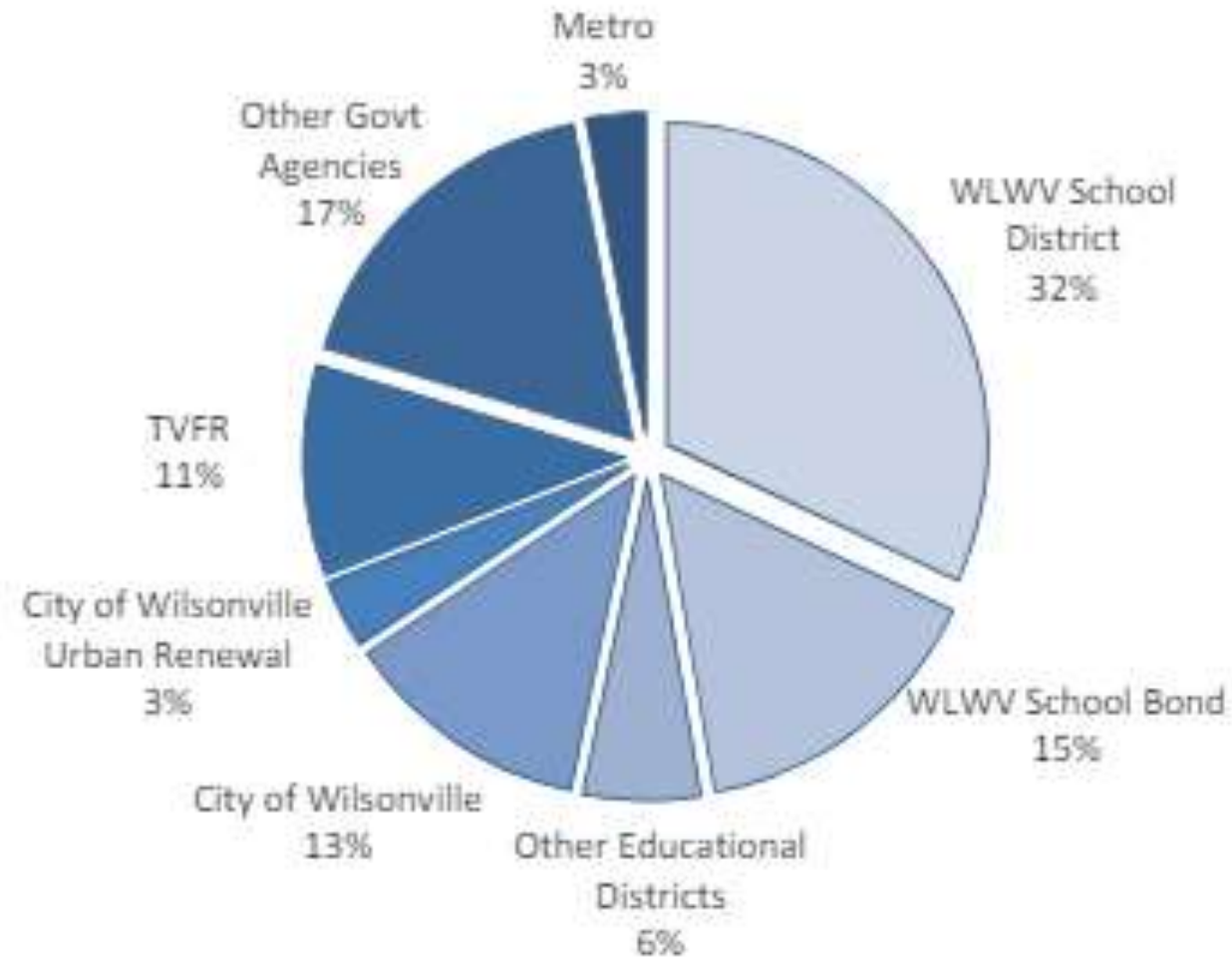
Parks, schools, agencies and our URA

The City demonstrates long-term strong partnerships with affected taxing districts. The Year 2000 Area projects (the District is now closed) were developed in partnership with WLWV schools to improve livability and student success. Early revenue sharing started in 2003.



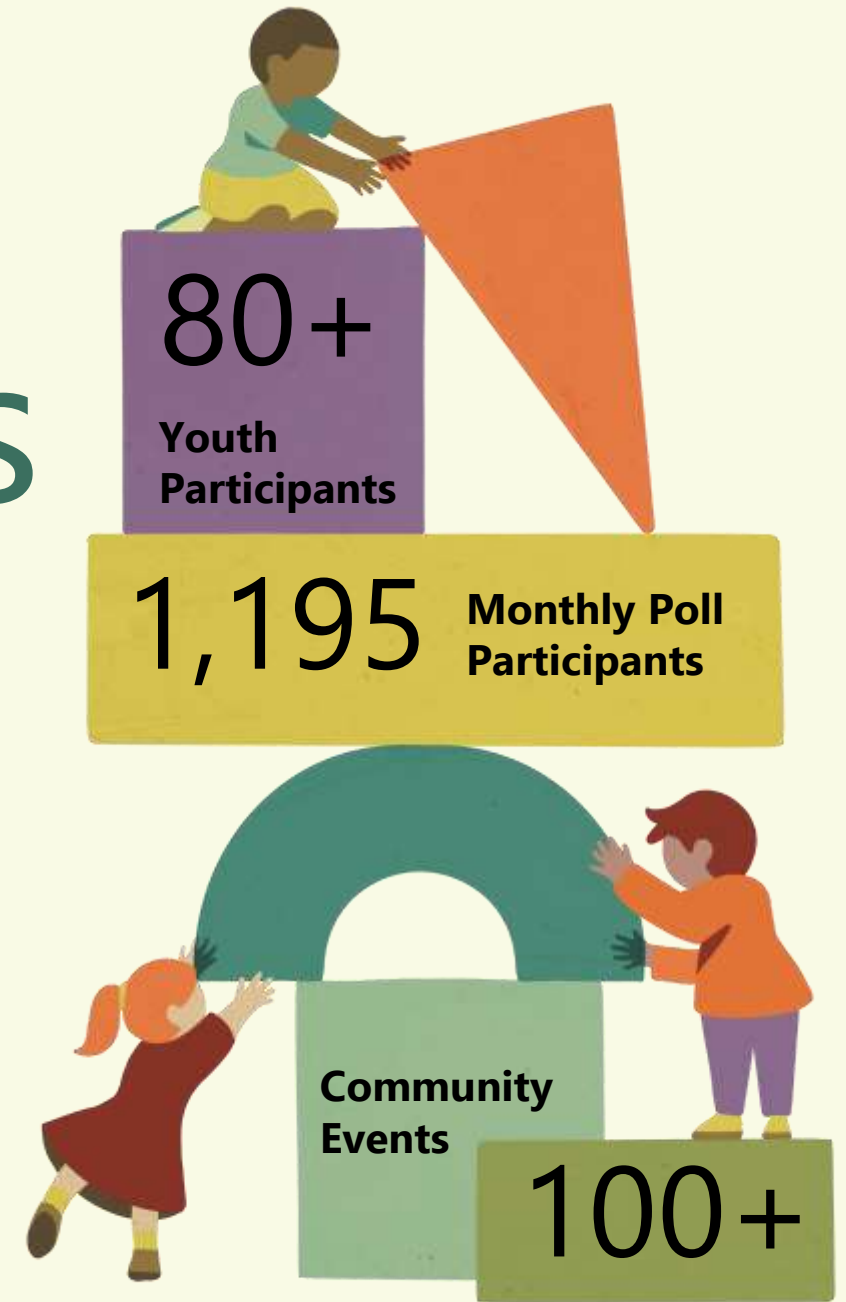


Property taxes by jurisdiction 2023-24



Town Center Outreach Events

The planning process began in late 2016 and concluded in 2019. It was driven by community involvement from Project Task Force, Town Center property, and business owners, employees residents, regional and state agency partners.



Town Center will be the
heart of Wilsonville.

Let's build on Success
and Vote Yes on 3-605.

Thank
You.

