



2021-2024 Trends



# Depth of Service

Accident Reconstruction  
(CRAFT)

Behavioral Health

Bomb Squad

Crisis Negotiation

CSI and Detective Division

Dive, Marine, and Air units

Family Justice Center

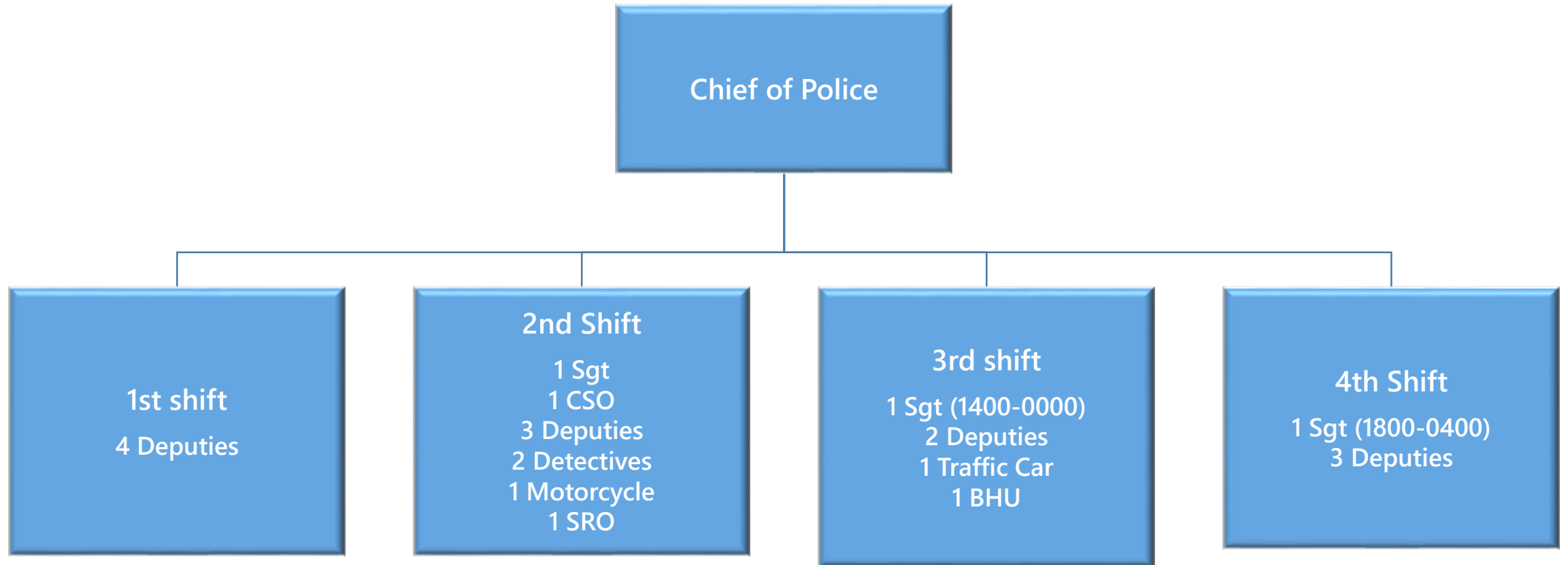
Forensic Sketch Artist

K9

Search & Rescue

S.W.A.T.

Trauma Intervention Program &  
Chaplain



**Organizational Chart ► Total Staff is 23**

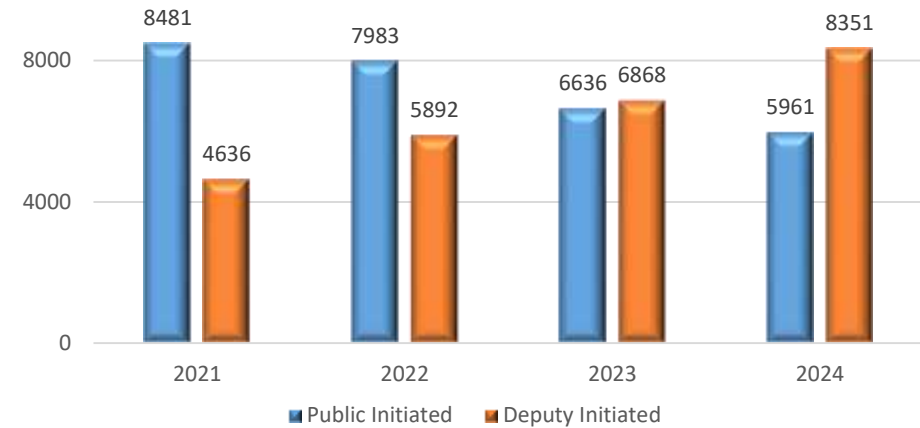
# Patrol Measures

- 24 Hours a Day
- 14,312 Calls for Service in 2024
  - Average of 1,193 Calls Each Month
  - 39 Calls Each Day

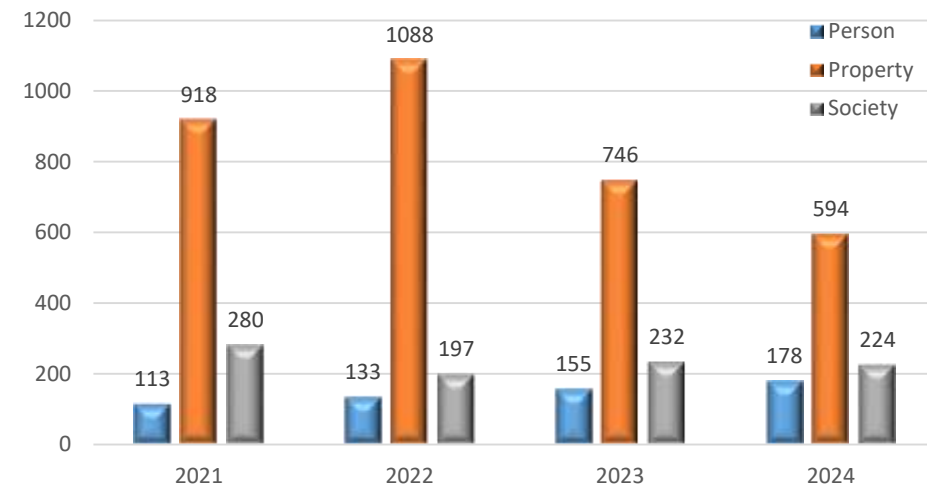


## City of Wilsonville

Call Activity by Initiated Method – Four-year Trend



Reported Crimes by Category – Four-year Trend





# Call Types

Drug overdose  
Medical Assistance—Heart Issues,  
Breathing Issues  
Sudden Death  
Mental Health Crises—Person  
Endangering or Harming Themselves  
or Others, Person Unable to Care for  
Self  
School Safety Issues—Student Fights,  
Unwanted Persons, Vice  
Public Drug/Alcohol Disturbances  
Stolen Vehicles  
Recovered Stolen Vehicles  
Runaway Juveniles  
Child Abuse

Noise Complaints—Music, Talking, Parties,  
Mufflers  
Shots Fired  
Prowlers  
Firework Complaints  
Parking Issues  
Welfare Checks on Persons Others are  
Unable to Reach or Persons Appearing  
to be in Trouble  
Disturbances of the Peace  
Homicides  
Domestic Violence  
Missing Persons—Elderly/Memory  
Problems, Suicidal  
Landlord/Tenant Issues

Probation Violations  
Sex Offenders  
Security Alarms  
Bomb Scares  
Routine Patrol  
Property Crime—*Vandalism, Theft*  
Trafficking  
Fraud  
Traffic Enforcement  
Public Indecency  
Panhandling  
Warrant Service  
Neighborhood/Neighbor Complaints  
Violations of No-contact Orders

# Reported Crimes



## Crime Rate – All Crime Types

### 2024 County

	Total reported crimes	Population	Crimes per 1,000 persons
Unincorporated Clackamas County:			
Inlying	8,119	97,476	83.3
Outlying	2,019	91,167	22.1
Contract Cities:			
Estacada	187	5,584	33.5
Happy Valley	1,324	28,237	46.9
Wilsonville	996	27,840	35.8

### Wilsonville Crime Rate per 1,000 Persons

2023 / 41.1

2022 / 51.3

2021 / 50.4

# Reported Crimes

## Crime Rate – Property

### 2024 County

	<b>Total reported property crimes</b>	<b>Population</b>	<b>Crimes per 1,000 persons</b>
Unincorporated Clackamas County:			
Inlying	4,873	97,476	50.0
Outlying	980	91,167	10.7
Contract Cities:			
Estacada	79	5,584	14.1
Happy Valley	815	28,237	28.9
Wilsonville	594	27,840	21.3

### Wilsonville Crime Rate per 1,000 Persons

2023 / 27.0

2022 / 39.7

2021 / 35.3

# Reported Crimes



## Crime Rate – Person

### 2024 County

	Total reported person crimes	Population	Crimes per 1,000 persons
Unincorporated Clackamas County:			
Inlying	1,138	97,476	11.7
Outlying	462	91,167	5.1
Contract Cities:			
Estacada	52	5,584	9.3
Happy Valley	215	28,237	7.6
Wilsonville	178	27,840	6.4

### Wilsonville Crime Rate per 1,000 Persons

2023 / 5.6

2022 / 4.9

2021 / 5.9



# Reported Crimes

## Crime Rate – Society

### 2024 County

		Total reported society crimes	Population	Crimes per 1,000 persons
Unincorporated Clackamas County:				
	Inlying	2,108	97,476	21.6
	Outlying	577	91,167	6.3
Contract Cities:				
	Estacada	56	5,584	10.0
	Happy Valley	294	28,237	10.4
	Wilsonville	224	27,840	8.0

### Wilsonville Crime Rate per 1,000 Persons

2023 / 8.4

2022 / 7.2

2021 / 14.1

# Comparative Cities

## Rates of Crime in Other Cities per 1000 Persons

	City 1	Wilsonville
Person	9	6.9
Property	33	21.1
Society	16	7.5
Overall	58	35.8
	City 2 <i>(only provided overall rate)</i>	
Combined	113.1	
County overall	50.5	

- GROSS ESTIMATIONS ONLY -

Rates may be collected and analyzed differently by other agencies.

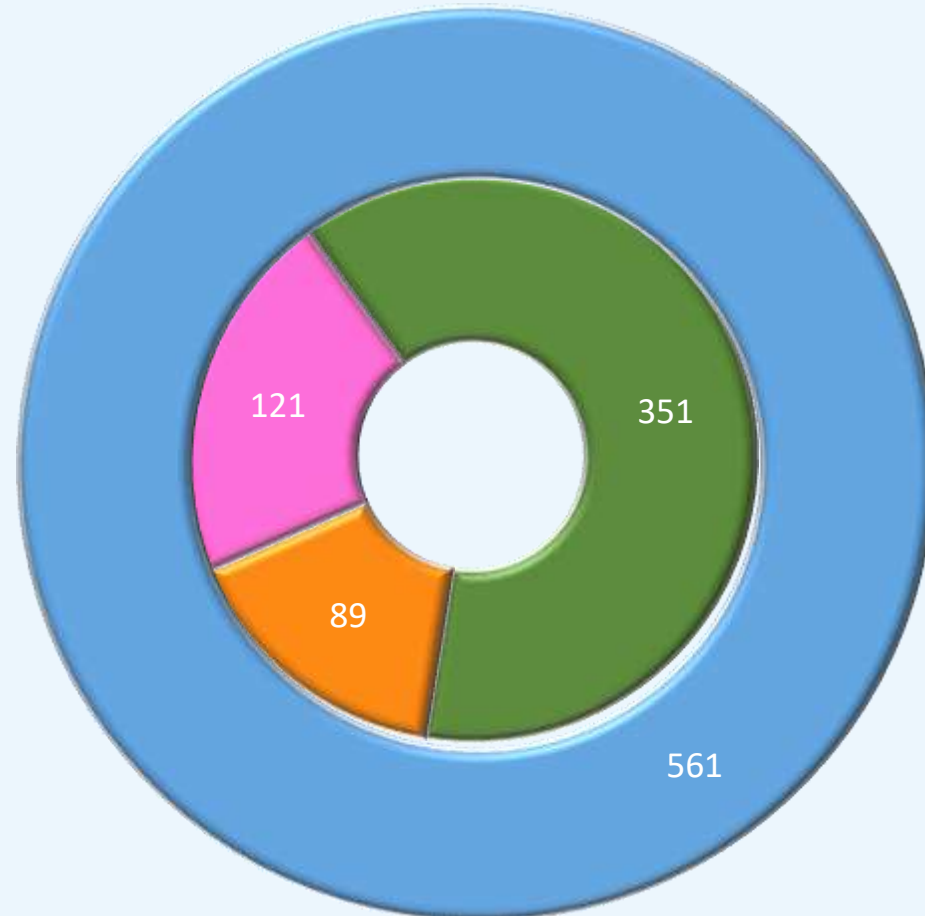
# Behavioral Health



Brenda Evans, LCSW

561 – Number of calls responded to in 2024 where there was an established mental health component

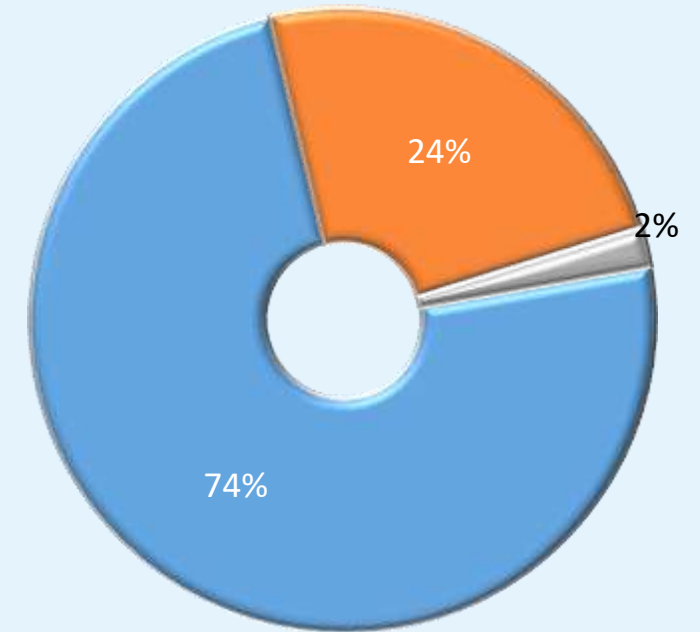
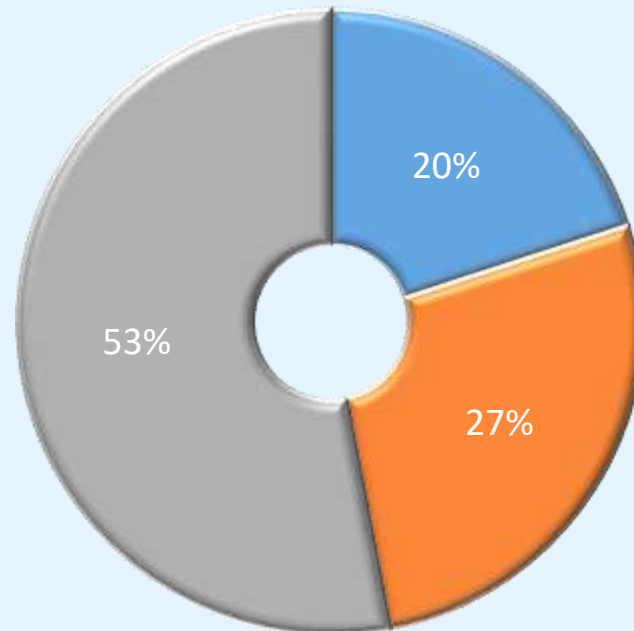
- 351 Contacts for follow up, prevention, case management, and care coordination work
- 89 Follow ups on police reports
- 121 Responses to Crisis



# Behavioral Health

## Demographics of Crisis Response (1/1/2024 – 2/2025)

- 20% Houseless
- 27% Housed
- 53% Housing not known



## Resolution Stats

- 74% in the community
- 24% w/referral to another emergency department
- 2% resulting in arrest



# Building Upgrades



**A BIG THANK YOU!**  
To Delora and Martin, Public Works



# COFFEE WITH A COP



Thank you for all that you do.

We are grateful, from our hearts to yours.

You are loved.

You men and women are the best, thank you.



## Community

Facebook • [Wilsonville Police Department@WilsonvillePoliceDepartment](#)  
Twitter • [Wilsonville Police@WilsonvillePD](#)  
Instagram • [@WilsonvillePolice](#)