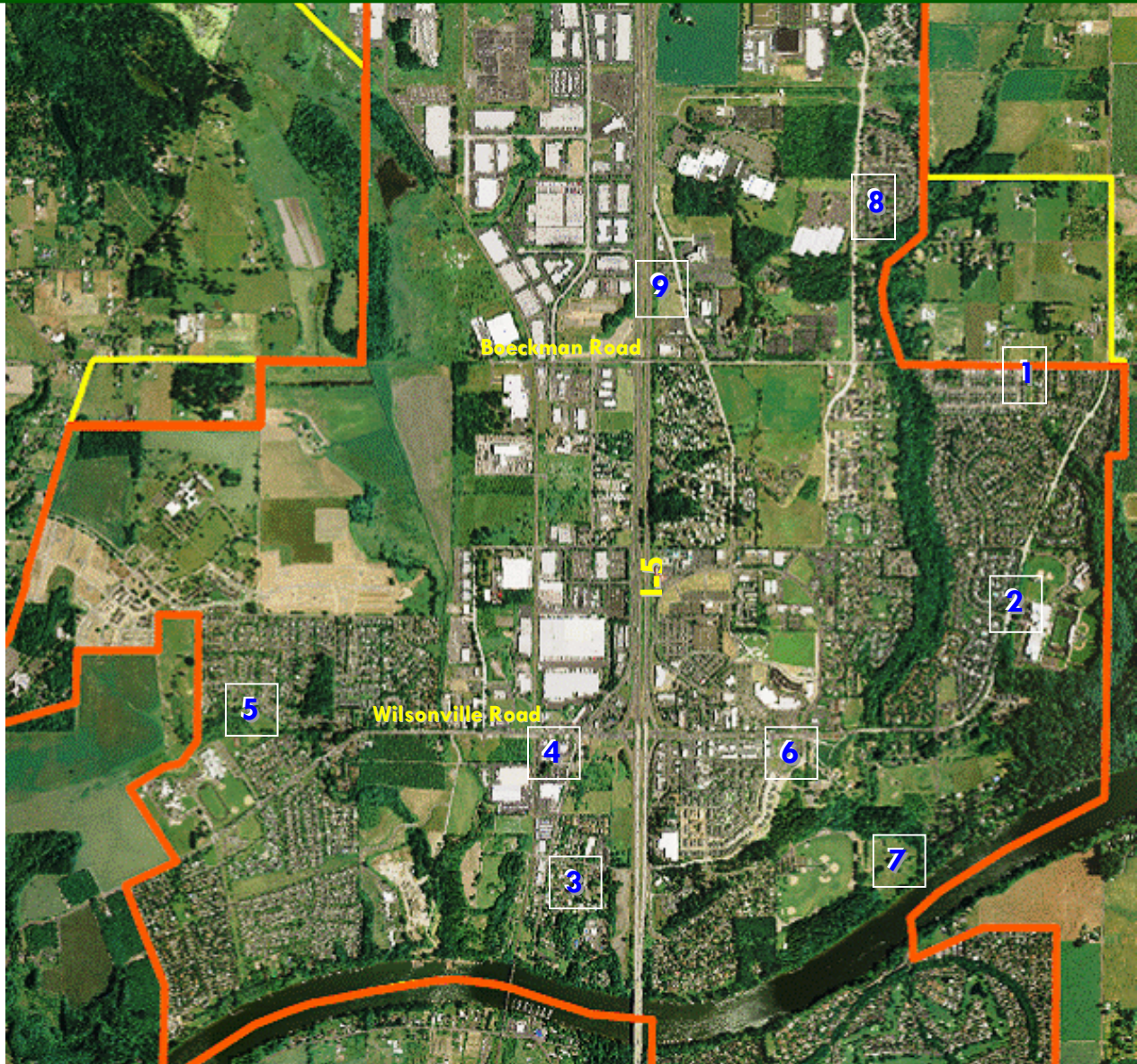


# Wilsonville Heritage Tree Locations



## 1. Bob Wiedemann Japanese Maple

Planted in 1973 at Frog Pond Church in tribute to Bob Wiedemann. (2008)



## 2. Cumberland Oregon White Oak

Located at the Wilsonville High School. Formerly part of the Cumberland family farm. (2008)



## 3. Sue Guyton Heritage Tree Grove

Located on 4th Street in Old Town. The Grove was named in honor of Sue Guyton, a lifelong Wilsonville resident in 2009. (2007)



## 4. Lowries Marketplace Grove

These trees were planted by children from Wilsonville's first school which was located at this site (1870 - 1911). (2007)



## 5. R.V. Short Douglas Fir

Standing in a neighborhood park at Park at Merryfield, this fir is taller than anything else in the area. (2006)



## 6. Frank Lockyear Grove

Located at the Wilsonville Library, this grove was planted by Boy Scouts under the guidance of Frank Lockyear in the 1970s. (2005)



## 7. Ernest Kolbe Giant Sequoia

Planted by Wilsonville resident & forestry expert, Ernest Kolbe, adjacent to his former homestead on the east side of Memorial Park. (2004)



## 8. Fred Barnes Black Walnut

Located in the Canyon Creek Meadows neighborhood, the tree was part of the Adolph Failmezger home site in the early 1930s. (2009)



## 9. Gotfried & Elizabeth Failmezger Oregon White Oak

Located between Parkway Ave. & I-5, just north of Boeckman Road, the tree is over 100 years old. (2009)