

# **Wilsonville City Council Work Session**

## **January 23, 2025**

**City of Wilsonville / SMART**  
**2025-26 State Legislative Agenda**

**Mark Ottenad, Public/Government Affairs Director**  
**Greg Leo, Public Affairs Consultant**

# 2025-26 State Legislative Agenda

- General and broad in scope
- Based on long-term City Council-adopted policies as embodied in the Comprehensive Plan and relevant City master plans and strategies
- First State Legislative Agenda developed in 2011
- Adopted every two years in odd-numbered year at start of new 2-year session of the Oregon Legislative Assembly
- Provides guidance to City staff for how to evaluate proposed legislation: support, oppose or neutral

# 2025-26 State Legislative Agenda

## 1. GOVERNANCE

- Local Autonomy
- State Shared Revenues /  
Unfunded Mandates

## 2. TRANSPORTATION & TRANSIT INFRASTRUCTURE

- Transportation
- Transit

## 3. ECONOMIC & COMMUNITY DEVELOPMENT

- Land Use and Infrastructure  
Development
- Workforce Development

## 4. ENVIRONMENTAL IMPACT



# 2025-26 State Legislative Agenda

## 2025-26



## State Legislative Agenda

### Wilsonville City Council

Shawn O'Neil, Mayor

Caroline Berry, Council President

Adam Cunningham, City Councilor

Katie Dunwell, City Councilor

Anne Shevlin, City Councilor

### City Appointed Management

Bryan Cosgrove, City Manager

Amanda Guile-Hinman, City Attorney

CITY OF WILSONVILLE, OREGON /  
SOUTH METRO AREA REGIONAL TRANSIT (SMART)

Mark Ottenad, Public/Government Affairs Director  
503-570-1505; [ottenad@ci.wilsonville.or.us](mailto:ottenad@ci.wilsonville.or.us)

Greg Leo, Public Affairs Consultant, The Leo Co.  
503-804-6391; [greg@theleocompany.com](mailto:greg@theleocompany.com)

29799 SW Town Center Loop East  
Wilsonville, OR 97070

[www.ci.wilsonville.or.us](http://www.ci.wilsonville.or.us)



REV 01/2023

### FAST FACTS: City of Wilsonville & South Metro Area Regional Transit (SMART)

#### ■ Population: One of Oregon's fastest growing cities

For the past 30 years, Wilsonville has been one of Oregon's fastest growing cities with population over 10,000. Wilsonville is now the state's 21<sup>st</sup> largest city.

Jurisdiction	2010 Census	2024 PSU Est.	% Change
City of Wilsonville	19,509	27,048	39%
Portland metro region*	1,641,036	1,837,831	12%
State of Oregon	3,831,074	4,259,132	11%

\* Clackamas, Multnomah and Washington Counties

#### ■ SMART Transit: I-5 Corridor Public Transportation Service

South Metro Area Regional Transit (SMART) provides transit services six days per week for 300,000 riders composed of commuting workers and residents. SMART links with regional transit providers, including TriMet and WES (Westside Express Service) commuter trains, Salem Area Mass Transit District ("Cherriots") and Canby Area Transit (CAT), as well as providing in-town fixed-route and paratransit services.



#### ■ Education & Workforce Development: In-Demand Skills Training

OregonTech Wilsonville is the Portland metro-area campus of the Oregon Institute of Technology (OIT), the state's premier university of advanced engineering and applied-technology studies. OregonTech Wilsonville works closely with the region's high-tech employers and area high schools to promote hands-on, practical Science-Technology-Engineering-Math (STEM) curriculum.

Clackamas Community College, Wilsonville Training Center Campus  
West Linn-Wilsonville School District and Canby School District



#### ■ Employment: Over 23,800 Jobs with \$1.7 Billion Annual Payroll in Wilsonville

Wilsonville's 1,400 businesses provide 23,800 jobs, of which about half are in high-wage industrial occupations of manufacturing—primarily in high-tech and software engineering—wholesale distribution and professional services. Nine out of 10 employees commute to jobs in Wilsonville primarily from the Portland metro-area and North Willamette Valley, Canby, Woodburn and Salem/Keizer.

Total annual payroll in Wilsonville exceeds \$1.68 billion annually—an +85% increase since 2000—that generates a total direct/indirect regional economic-multiplier impact of over \$3.8 billion per year.



SOURCE: Oregon Employment Dept.

#### Top-10 Private-Sector Wilsonville Employers

Sorted descending by Number of Full-Time Equivalent (FTE) Jobs

Business	Type	Jobs
1. Siemens EDA (fka Mentor Graphics)	Software Mfg	1,040
2. Swire Coca-Cola USA	Mfg + Whlsl Distrib.	585
3. Collins Aerospace	Manufacturing	535
4. Sysco Food Services	Wholesale Distrib.	485
5. Columbia Distributing HQ	Wholesale Distrib.	425
6. Costco Wholesale Wilsonville	Retail	330
7. DW Fritz Automation	Manufacturing	320
8. TE Medical Tyco Electronics Connectivity	Manufacturing	280
9. Fred Meyer Stores Wilsonville	Retail	275
10. Teledyne FLIR	Manufacturing	270



The Wilsonville SMART Transit Center serves as the TriMet Westside Express Service (WES) commuter rail train station that features a 400-car park-and-ride lot that can be expanded. Each WES train is met by SMART buses that whisk employees to the worksite within 10 minutes of arrival in Wilsonville, providing key 'last-mile' public transit service.



# 2025-26 State Legislative Agenda

## 2025-26 State Legislative Agenda

Acting on behalf of the residents and businesses of the City of Wilsonville and SMART, the City Council adopts this legislative agenda to guide municipal policy positions in the 2025-26 sessions of the 83<sup>rd</sup> Oregon Legislative Assembly.

*Wilsonville City Council, January 23, 2025*



### 1. GOVERNANCE

#### ■ Local Autonomy

1.1 The City of Wilsonville supports the home-rule autonomy of local governments and opposes efforts to preempt local-government authority to work on behalf of the city's residents and businesses. The City seeks opportunities to restore municipal authority where it has previously been preempted by state law.

#### ■ State Shared Revenues / Unfunded Mandates

1.2 The City of Wilsonville supports the State Shared Revenue formula and opposes efforts to shift service-costs from the State to local governments, often referred to as "unfunded mandates." The City opposes efforts to reduce traditional "shared revenues," which include alcoholic beverage and cigarette taxes and other state-shared revenues that pay for essential local services.



# 2025-26 State Legislative Agenda

## 2. TRANSPORTATION & TRANSIT INFRASTRUCTURE

### ■ Transportation

2.1 The City of Wilsonville supports multi-modal transportation options—including roadways, transit services and bike/ped alternatives—for residents, commuting workers and businesses.

2.2 The City of Wilsonville supports strategies and plans that maintain or increase the traffic-handling capacity of I-5 for the timely movement of freight and conduct of commerce, including the stretch of I-5 Boone Bridge crossing the Willamette River.

2.3 The City of Wilsonville supports increased funding by federal and state governments of public transportation infrastructure.

2.4 The City of Wilsonville supports efforts to re-open and maintain the operations of the Willamette Falls Locks and Canal.



### ■ Transit

2.5 The City of Wilsonville supports increased funding and access to increased transit services that provide residents and commuting workers with an affordable option for personal mobility.

2.6 The City of Wilsonville supports expanded Westside Express Service (WES) commuter rail transit service for full-day and Saturday service and extension of service to Salem.



# 2025-26 State Legislative Agenda

## 3. ECONOMIC & COMMUNITY DEVELOPMENT

### ■ Land Use and Infrastructure Development

3.1 The City of Wilsonville supports sustainable, “smart-growth” concepts that include objectives such as walkable neighborhoods, compact urban development, the conservation of valuable resource lands and the protection of prime agricultural soils outside the urban growth boundary (UGB).

3.2 The City of Wilsonville supports Oregon land-use law that calls for intergovernmental coordination and urban-development activities to occur in cities—areas with municipal governance and supporting infrastructure—and opposes efforts to encourage activities outside of cities that result in urban-level development.

3.3 The City of Wilsonville supports initiatives that reclaim industrial “brownfield” sites in urban settings for productive re-use and that assists cities to develop existing industrial lands. These kinds of initiatives maximize the benefit from existing public resources and reduce the need for urban-growth boundary expansions to accommodate industrial development.

3.4 The City of Wilsonville supports the creation or extension of additional economic-development tools that cities may utilize as they wish, including implementing the Oregon Industrial Site Readiness Program that complies with current state law and making the state “Enterprise Zone” and similar designations available to more cities.





# 2025-26 State Legislative Agenda

3.5 The City of Wilsonville supports efforts that encourage development of a broad mix of housing types for residents of all income levels. The City specifically advocates for funding of state agencies and local governments to advance affordable housing efforts and related infrastructure.

## ■ Workforce Development

3.6 The City of Wilsonville supports adequate funding for institutions of higher education in order to provide more comprehensive workforce development opportunities for future and current employees of industrial employers.

3.7 The City of Wilsonville supports efforts to improve the overall quality of K–12 education, and in particular to strengthen Science-Technology-Engineering-Math (STEM) education, as well as post-secondary education that prepare tomorrow's workforce.

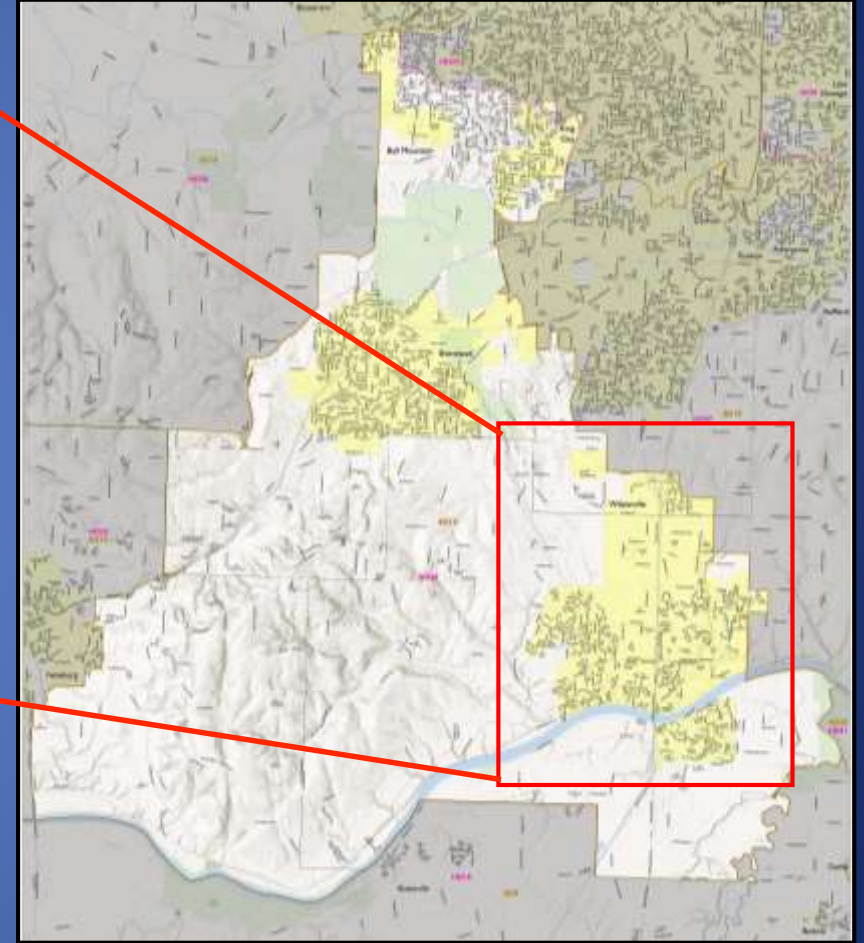
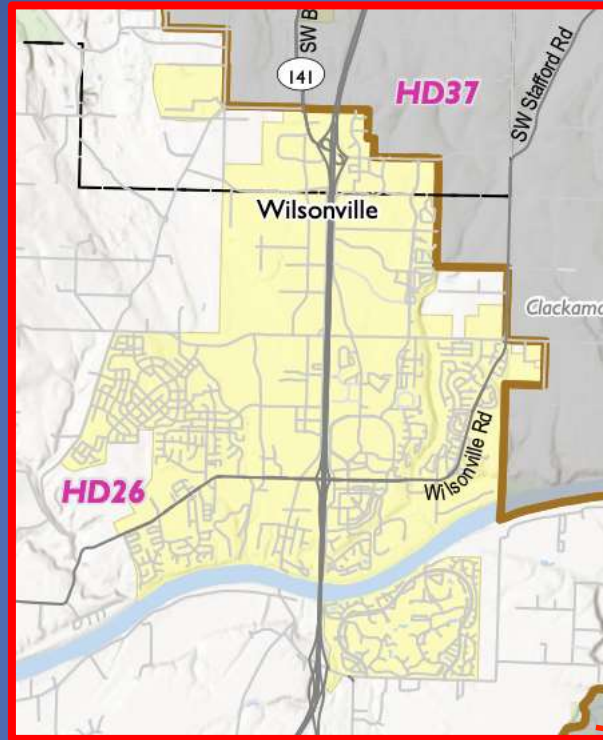
## 4. ENVIRONMENTAL IMPACT

4.1 The City of Wilsonville supports the protection of the environment and important natural resources for the benefit of human health, quality of life for citizens, recreational opportunities, and wildlife habitat.





# Wilsonville's House Representative



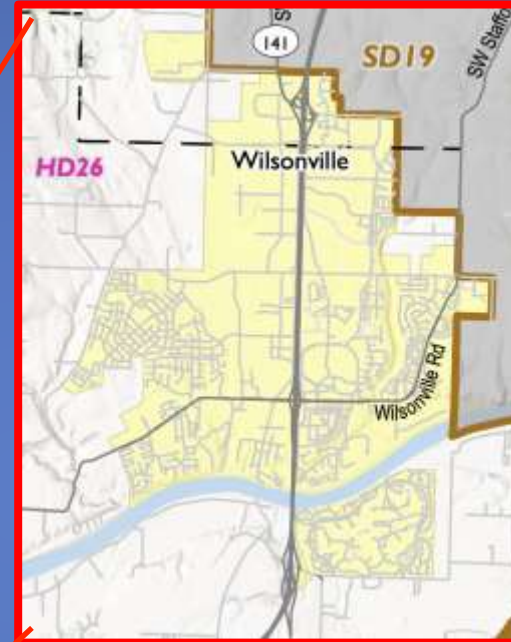
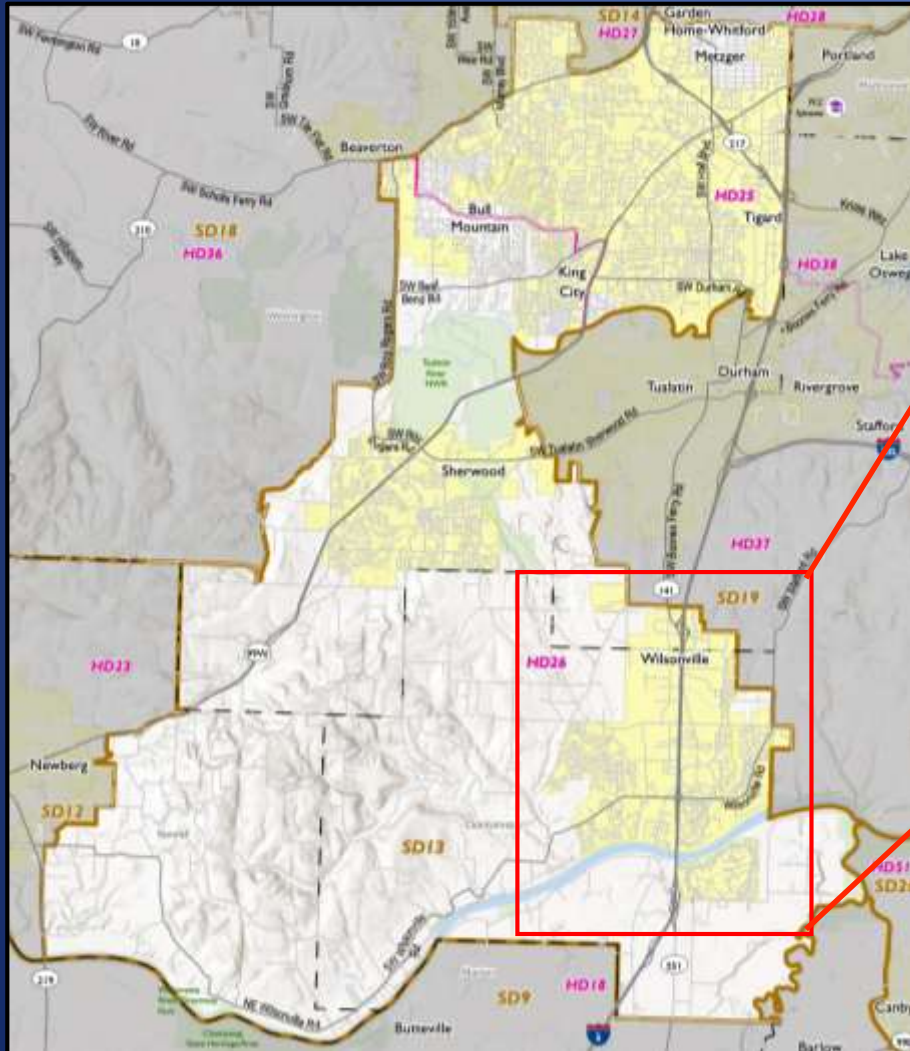
## Representative Courtney Neron

House District 26 – Wilsonville/Sherwood/King City

Elected November 2018, 2020, 2022, 2024

Swearing in January 2025 to serve fourth two-year term

# Wilsonville's Senator



**Senator Aaron Woods**

**District 13 – Wilsonville, Sherwood, King City,  
Bull Mountain and part of Tigard**

**Elected November 2022**

**Sworn in January 2023 to serve a four-year term**



# 2025-26 State Legislative Agenda

City works with other organizations to achieve legislative policy goals, including:

- LOC – League of Oregon Cities
- MMC – Metropolitan Mayors Consortium
- OEDA – Oregon Economic Development Assn.
- 1000 Friends of Oregon, Friends of French Prairie
- Metro, Clackamas County, Washington County
- Special Interest Coalitions: Industrial Lands, Recreational Immunity

# **Wilsonville City Council Work Session**

## **January 23, 2025**

### **City of Wilsonville / SMART**

### **2025-26 State Legislative Agenda**

**Mark Ottenad, Public/Government Affairs Director**

**Greg Leo, Public Affairs Consultant**